

MUTUAL FUND UNLOCKED

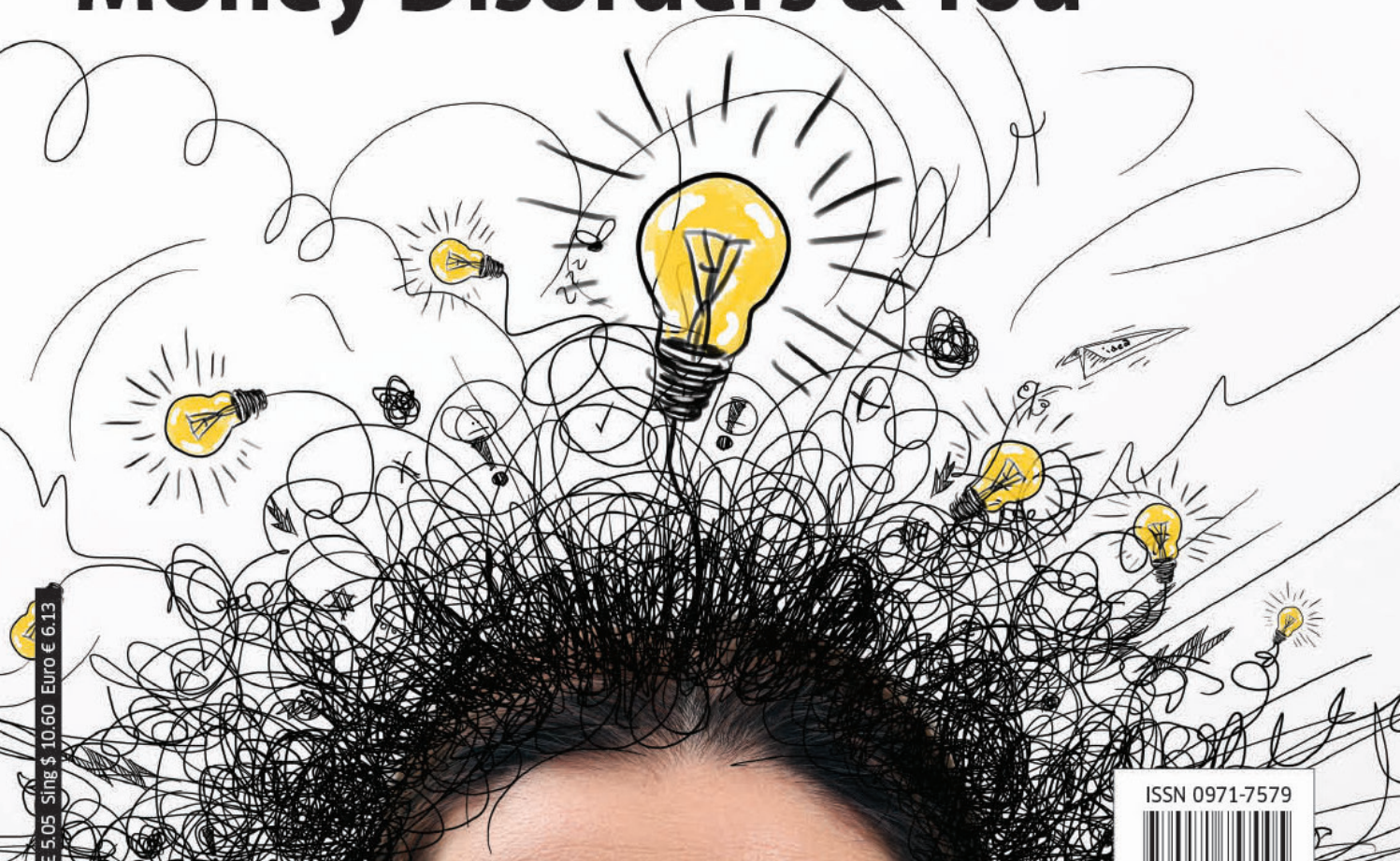
DALAL STREET INVESTMENT JOURNAL

DEMOCRATIZING WEALTH CREATION

Dec 21, 2020 - Jan 03, 2021 ■ Pages 100 ■ www.DSIJ.in ₹120

Cover Story

Money Disorders & You



US \$ 10.15 UK £ 5.05 SING \$ 10.60 EURO € 6.13

Special Report
Concentrated Portfolio
Or Diversified Portfolio?

Special Report
What's The Investing Style
Of Your Fund Manager?

ISSN 0971-7579



9 770971 757005 >

Vol. 36 No. 02

Key To Databank

Category Rank: Category wise ranking as on Dec 11th 2020

Scheme Name: This is the name of the mutual fund scheme

NAV (₹): Net asset value per unit of a mutual fund or an exchange-traded fund (ETF) on a specific date

AUM (₹Crore): This is the total market value of financial assets held by the mutual fund scheme on a specific date.

Weightage: Large-Cap: This is a percentage of total assets held by a fund in the large-cap stocks as defined by AMFI for the current period.

Mid-Cap: This is a percentage of total assets held by a fund in mid-cap stocks as defined by AMFI for the current period.

Small-Cap: This is a percentage of total assets held by a fund in small-cap stocks as defined by AMFI for the current period.

Total No of Companies: This is a total number of securities held by a mutual fund scheme at the end of a specific month.

Expenses Ratio: This is the latest expense ratio disclosed by the mutual fund scheme

Return_1Years: This is the past one-year return given by the scheme.

Expected 1-yr return: This is based on our analysis of the portfolio of mutual fund scheme and their expected growth in the next one year, assuming the underlying remains the same.

Current Rank: Rank as on Dec 11th 2020

Previous Rank of Dec 01st 2020 is shown under bracket ()

Risk : Risk as on Dec 11th 2020

The following table lists top-ranked equity funds based on DSIJ's proprietary research methodology. We have evaluated each funds underlying portfolio of stocks and ranked them based on their expected portfolio returns. In a similar way we calculated the risk of a fund based on its constituents. This helps us to 'rank' and assign 'risk' to newly launched funds also.

We continuously evaluate equity funds based on the changed ratings of their underlying stocks and the change in their prices. Therefore, this list is quite dynamic and reflects the best possible return potential of the funds for the next one year.

You can use this ranking to create your own mutual fund portfolio. Depending on your risk profile, return expectations and overall asset allocation, you can add the best performing fund category to your portfolio. For clarity and to include more funds, we have not included 'Direct' and 'close-ended' funds. You can visit our website (www.dsi.in/mutual-fund) to check the entire list along with equity-oriented hybrid and close-ended funds.

This ranking can also be used for reviewing different holdings in your fund portfolio. Hence, a consistently laggard performer of a category can be looked at as 'Switch' or 'Exit' advice.

Category Rank	Scheme Name	NAV (₹)	AUM (₹ Cr)	Weightage (%)			No of Companies	Expense Ratio (%)	Return 1 Years (%)	Expected 1 yr return (%)	DSIJ Current Rank (11 Dec 20)	Risk
				Large Cap	Mid Cap	Small Cap						
Equity - Large Cap												
1	HDFC Top 100 Fund - Reg.Plan	518.24	17,566	92.59	6.85	0.00	54	2.03	6.52	21.25	14 (13)	Moderate
2	Nippon India Large Cap Fund	36.39	10,298	83.93	11.32	4.71	44	1.87	5.82	19.68	15 (18)	Moderately High
3	Franklin India Bluechip Fund - Growth	526.23	5,440	85.54	9.27	0.00	25	1.93	14.09	16.56	42 (50)	Moderate
4	Tata Large Cap Fund - Reg.Plan	241.04	793	92.95	5.68	0.00	29	2.50	6.19	14.44	73 (215)	Moderate
5	Principal Large Cap Fund	11.33	231	75.03	0.00	0.00	46	2.40	**	14.18	82 (187)	Moderately Low
6	SBI Blue Chip Fund	46.74	22,421	88.18	10.25	0.86	57	1.71	15.14	14.12	84 (78)	Moderately High
7	Aditya Birla Sun Life Frontline Equity Fund	256.85	17,274	87.28	10.03	1.13	65	1.83	12.64	13.88	89 (99)	Moderate
8	Mahindra Manulife Large Cap Pragati Vojana	11.67	96	94.80	2.79	0.00	32	2.55	9.92	13.52	100 (219)	Moderate
9	ICICI Prudential Bluechip Fund	49.05	23,486	93.17	4.65	0.00	62	1.72	12.81	13.49	101 (82)	Moderate
10	Mirae Asset Large Cap Fund	60.09	18,999	86.43	10.82	0.83	52	1.67	13.26	13.25	106 (81)	Moderate
11	L&T India Large Cap Fund - Reg.Plan	31.63	588	90.88	8.25	0.00	50	2.57	11.20	12.81	160 (170)	Moderately Low
Equity - Large & Mid Cap												
1	UTI Core Equity Fund	68.18	762	50.94	37.48	8.37	61	2.50	14.28	19.00	19 (16)	Moderately High
2	ICICI Prudential Large & Mid Cap Fund	365.47	2,786	51.85	37.78	2.94	62	2.11	13.04	16.49	43 (26)	Moderate
3	HDFC Growth Opportunities Fund - Reg.Plan	127.97	1,581	57.90	34.21	2.35	54	2.59	13.28	16.20	47 (32)	Moderately High
4	DSP Equity Opportunities Fund	261.21	4,869	56.27	38.69	3.72	62	1.93	13.82	15.25	59 (69)	Moderately High
5	BOI AXA Large & Mid Cap Equity Fund	40.47	180	58.16	37.70	3.01	63	2.71	15.33	14.18	83 (163)	Moderate
6	Edelweiss Large & Mid Cap Fund	37.38	528	56.54	35.89	3.88	59	2.47	15.58	13.88	90 (159)	Moderate
7	Mirae Asset Emerging Bluechip Fund	68.69	11,929	59.89	34.38	4.19	61	1.77	22.66	13.81	92 (136)	Moderately High
8	Nippon India Vision Fund	594.03	2,620	61.19	37.25	0.00	72	2.15	12.89	13.04	146 (228)	Moderately High
9	Motilal Oswal Large and Midcap Fund	11.53	538	57.72	37.01	5.12	29	2.44	10.64	12.59	169 (348)	Moderately High
10	Franklin India Equity Advantage Fund	87.65	2,314	53.13	35.18	9.58	54	2.11	12.86	12.46	179 (213)	Moderately High
Others - Index Funds/ETFs												
1	Kotak PSU Bank ETF	179.86	25	62.96	30.46	6.55	12	0.49	-24.90	42.56	1 (1)	High
2	Nippon India ETF PSU Bank BeES	20.02	39	62.86	30.41	6.54	12	0.49	-24.73	42.53	2 (2)	High
3	Nippon India CPSE ETF	20.56	11,374	82.63	14.39	2.84	12	0.01	-8.97	39.31	3 (3)	Moderate
4	ICICI Prudential Bharat 22 ETF	31.65	4,706	85.65	7.39	6.86	22	0.01	-5.16	35.42	4 (4)	Moderate

() There are some blanks in the previous ranking column. This is because these funds were not in our last ranking

** These funds are yet to complete one year

Individual investors now hold a lower share of industry assets, i.e. 51.7 per cent in October 2020, compared with 53.9 per cent in October 2019.

Category Rank	Scheme Name	NAV (₹)	AUM (₹ Cr)	Weightage (%)			No of Companies	Expense Ratio (%)	Return 1 Years (%)	Expected 1 yr return (%)	DSIJ Current Rank (11 Dec 20)	Risk
				Large Cap	Mid Cap	Small Cap						
5	Nippon India ETF NV20	71.59	27	99.20	0.00	0.00	20	0.16	25.07	21.89	12 (11)	Moderately Low
6	Axis Banking ETF	305.36	67					0.16	**	16.86	33 (0)	High
7	HDFC Banking ETF	305.98	152	96.67	3.22	0.00	12	0.16	**	16.86	34 (206)	High
8	Nippon India ETF Bank BeES	307.61	7,031	96.72	3.23	0.00	12	0.19	-3.58	16.86	35 (204)	High
9	UTI Bank Exchange Traded Fund	305.91	35	96.50	3.49	0.00	12	0.16	0.00	16.67	37 (201)	High
10	SBI ETF Nifty Bank	304.98	2,478	96.76	3.24	0.00	12	0.20	-3.52	16.67	38 (202)	High
11	Aditya Birla Sun Life Banking ETF	304.04	96	96.75	3.23	0.00	12	0.16	-2.58	16.67	39 (203)	High
12	ICICI Prudential Bank ETF	304.14	622	96.71	3.23	0.00	12	0.16	-2.91	16.67	40 (205)	High
13	Motilal Oswal Nifty Bank Index Fund	11.05	90	95.59	3.19	0.00	12	1.03	-3.14	16.45	45 (191)	High
14	ICICI Prudential Nifty Low Vol 30 ETF	110.24	186	95.85	3.85	0.00	30	0.42	22.98	15.95	48 (39)	Low
15	DSP Equal Nifty 50 Fund	11.23	108	99.78	0.00	0.00	50	0.77	16.88	15.34	55 (59)	Moderately High
16	UTI Nifty Index Fund	89.16	2,711	100.86	0.00	0.00	50	0.14	14.03	13.32	105 (96)	Moderate
17	Tata Index Nifty Fund - Reg.Plan	81.84	85	99.32	0.00	0.00	50	0.50	13.30	13.25	107 (128)	Moderate
18	DSP Nifty 50 Index Fund	12.60	57	100.21	0.00	0.00	50	0.36	13.54	13.24	109 (105)	Moderate
19	HDFC Index Nifty 50 Plan - Reg.Plan	123.67	2,193	99.73	0.00	0.00	50	0.30	13.66	13.22	111 (118)	Moderate
20	HDFC Nifty 50 ETF	1,428.12	555	99.82	0.00	0.00	50	0.05	14.24	13.22	112 (110)	Moderate
21	UTI Nifty Exchange Traded Fund	1,441.07	18,323	99.95	0.00	0.00	50	0.06	14.23	13.22	113 (108)	Moderate
22	Nippon India Index Fund - Nifty Plan	22.52	300	99.75	0.00	0.00	50	1.19	12.84	13.21	114 (116)	Moderate
23	Nippon India ETF Nifty BeES	144.26	2,582	99.81	0.00	0.00	50	0.05	14.31	13.21	115 (112)	Moderate
24	Motilal Oswal Nifty 50 Index Fund	11.12	51	99.37	0.00	0.00	50	0.50	**	13.20	116 (95)	Moderate
25	SBI ETF Nifty 50	140.09	74,075	99.85	0.00	0.00	50	0.07	14.25	13.20	117 (109)	Moderate
26	Axis Nifty ETF - Reg.Plan	140.28	29	99.82	0.00	0.00	50	0.15	14.23	13.20	118 (114)	Moderate
27	Kotak Nifty ETF	140.93	879	99.82	0.00	0.00	50	0.12	14.15	13.20	119 (111)	Moderate
28	ICICI Prudential Nifty ETF	143.43	1,360	99.78	0.00	0.00	50	0.05	14.29	13.20	120 (113)	Moderate
Equity - Sectoral/Thematic												
1	Aditya Birla Sun Life PSU Equity Fund	9.80	266	67.80	14.31	12.52	26	2.45	**	29.30	5 (5)	Moderate
2	HDFC Infrastructure Fund - Reg.Plan	13.59	454	49.26	13.51	30.11	31	2.65	-8.24	26.46	8 (6)	Moderately High
3	SBI PSU Fund	9.41	158	67.24	7.21	19.96	21	2.62	-6.97	24.32	9 (10)	Moderate
4	ICICI Prudential FMCG Fund - Growth	271.15	516	78.63	14.04	4.94	23	2.59	10.79	23.23	10 (8)	Low
5	Nippon India Banking Fund	259.11	2,509	69.31	20.20	3.54	26	2.29	-8.97	19.38	16 (53)	High
6	Aditya Birla Sun Life Infrastructure Fund	32.05	352	30.76	21.76	44.03	38	2.59	12.54	19.26	17 (14)	Moderately High
7	DSP Natural Resources and New Energy Fund	35.69	306	62.66	9.94	0.59	19	2.47	16.09	18.94	20 (35)	Moderately High
8	Invesco India PSU Equity Fund	19.62	152	53.37	23.93	17.04	19	2.65	10.29	18.07	24 (23)	Moderate
9	LIC MF Banking & Financial Services Fund	11.68	58	81.22	9.16	4.78	14	2.67	-3.21	17.90	25 (71)	Moderately High
10	Franklin Build India Fund	43.10	911	65.96	7.41	22.92	31	2.36	6.11	17.66	29 (34)	Moderately High
11	ICICI Prudential India Opportunities Fund	11.32	2,383	69.74	16.18	5.32	33	2.07	11.31	17.33	30 (17)	Moderately High
12	UTI Infrastructure Fund	53.98	972	58.02	23.79	17.75	39	2.40	4.00	16.59	41 (44)	Moderate
13	Baroda Banking and Financial Services Fund	25.10	43	79.34	11.59	4.11	23	2.72	-1.76	16.46	44 (240)	Moderately High
14	ICICI Prudential Banking and Fin. Services	64.60	2,792	66.59	23.54	5.42	28	2.15	-5.06	15.70	51 (103)	Moderately High
15	LIC MF Infrastructure Fund	14.91	53	57.13	23.63	15.51	28	2.52	0.31	15.30	56 (73)	Moderate
16	Canara Robeco Infrastructure	46.46	97	45.97	28.26	24.62	33	2.58	6.76	15.25	58 (87)	Moderate
17	Tata Resources & Energy Fund	19.08	43	51.46	19.85	17.46	27	2.52	33.32	14.76	66 (275)	Moderately High
18	Tata Banking and Financial Services Fund	21.38	597	83.66	7.05	3.02	15	2.60	2.08	14.68	67 (394)	Moderately High
19	UTI Banking & Financial Services Fund	94.60	481	86.26	10.38	2.08	21	2.83	-5.24	14.42	74 (305)	High
20	Sundaram Rural and Consumption Fund	46.83	1,428	52.85	35.82	9.73	43	2.23	12.21	14.39	75 (42)	Moderately Low
21	HSBC Infrastructure Equity Fund	15.79	78	48.87	17.76	31.00	29	2.56	9.72	14.21	78 (37)	Moderately High
22	DSP Tiger Fund	91.93	759	49.73	23.63	25.73	59	2.49	3.36	14.20	79 (76)	Moderately High
23	ICICI Prudential Infrastructure Fund	51.64	1,016	59.90	9.09	26.24	47	2.40	7.49	14.19	80 (29)	Moderately High
24	SBI Banking & Financial Services Fund	20.45	1,665	79.88	10.03	5.17	20	2.13	3.97	14.09	85 (350)	Moderately High
25	Nippon India Power & Infra Fund	103.01	1,163	54.45	15.12	28.49	39	2.37	13.45	13.94	86 (54)	Moderately High
26	Invesco India Infrastructure Fund	19.76	59	36.66	23.33	34.92	33	2.55	17.20	13.78	93 (66)	Moderate
27	Invesco India Financial Services Fund	63.35	265	78.53	3.70	9.53	19	2.58	1.96	13.58	98 (426)	Moderately High
28	Mirae Asset Great Consumer Fund	40.86	987	59.76	26.92	11.67	31	2.21	11.63	13.19	124 (56)	Moderately Low
29	Nippon India Consumption Fund	81.22	101	66.78	22.26	6.57	28	2.57	21.31	13.17	126 (24)	Moderately Low
30	Aditya Birla Sun Life International Eq. - Plan B	21.20	75	36.33	8.45	26.83	49	2.59	13.57	12.47	177 (395)	Moderately High

Institutional investors account for 48.3 per cent of the mutual fund assets, of which corporates are 95 per cent. The rest are Indian and foreign institutions and banks.

Category Rank	Scheme Name	NAV (₹)	AUM (₹ Cr)	Weightage (%)			No of Companies	Expense Ratio (%)	Return 1 Years (%)	Expected 1 yr return (%)	DSJ Current Rank (11 Dec 20)	Risk
				Large Cap	Mid Cap	Small Cap						
31	IDBI Banking & Financial Services Fund	11.07	109	87.49	9.20	1.38	21	2.49	-1.16	12.47	178 (407)	Moderately High
32	BOI AXA Manufacturing & Infrastructure Fund	18.78	38	34.23	29.09	35.27	50	2.50	29.34	12.32	183 (178)	Moderately High
33	Sundaram Financial Services Opportu. Fund	47.89	225	81.86	14.84	1.09	21	2.36	1.20	12.31	184 (433)	Moderately High
Equity - Focused												
1	HDFC Focused 30 Fund - Reg.Plan	77.67	557	78.91	7.64	7.78	30	2.66	3.59	21.58	13 (15)	Moderate
2	Franklin India Focused Equity Fund	45.70	7,205	73.84	9.88	11.14	25	1.87	10.76	17.82	26 (28)	Moderately High
3	Tata Focused Equity Fund	10.92	1,397	77.40	16.76	2.97	21	2.14	9.36	15.48	52 (125)	Moderate
4	Nippon India Focused Equity Fund	53.56	4,204	63.77	17.37	7.48	28	2.06	17.09	14.93	63 (52)	Moderately High
5	Principal Focused Multicap Fund	79.28	453	68.91	15.66	7.77	30	2.56	16.93	13.32	103 (354)	Moderately High
6	Aditya Birla Sun Life Focused Equity Fund	70.03	4,092	85.24	10.95	0.00	32	2.07	13.80	12.99	151 (106)	Moderate
7	Kotak Focused Equity Fund	12.03	1,641	72.46	26.27	0.76	31	2.08	12.76	12.83	159 (129)	Moderate
8	Sundaram Select Focus	209.17	1,047	89.11	6.03	0.00	30	2.27	9.75	12.45	180 (101)	Moderately Low
Equity - Mid Cap												
1	Baroda Mid-Cap Fund	11.23	51	2.73	83.37	11.18	40	2.53	30.73	14.55	69 (67)	Moderately High
2	Principal Midcap Fund	11.84	295	19.89	66.86	10.03	66	2.47	**	12.84	157 (184)	Moderate
3	Edelweiss Mid Cap Fund	33.15	926	1.88	78.96	17.47	61	2.24	26.32	12.54	174 (251)	Moderately High
4	BNP Paribas Mid Cap Fund	39.27	708	10.54	76.41	12.24	52	2.35	23.70	12.33	182 (165)	Moderately High
5	Invesco India Mid Cap Fund	60.45	1,142	16.15	71.17	7.85	42	2.26	23.75	12.26	187 (164)	Moderate
6	Aditya Birla Sun Life Midcap Fund	305.13	2,283	12.69	68.44	14.25	63	2.21	14.08	12.18	193 (209)	Moderate
7	Axis Midcap Fund	48.20	7,878	20.85	70.81	1.28	50	2.01	22.83	12.11	197 (325)	Moderate
8	Mirae Asset Midcap Fund	13.62	2,561	22.54	68.90	6.31	48	2.02	24.90	11.46	224 (138)	Moderately High
9	Union Midcap Fund	18.03	188	8.48	71.82	13.45	45	2.49	**	11.21	243 (221)	Moderately High
Equity - Small Cap												
1	Franklin India Smaller Companies Fund	56.78	6,152	14.47	11.89	68.40	63	1.90	17.93	13.25	108 (161)	High
2	HSBC Small Cap Equity Fund	54.07	330	3.19	26.41	62.47	40	2.49	28.24	12.86	155 (48)	High
3	Aditya Birla Sun Life Small Cap Fund	35.12	2,197	2.98	21.96	68.23	71	2.25	19.44	11.36	232 (247)	High
4	ICICI Prudential Smallcap Fund	30.55	1,448	1.53	23.45	68.28	58	2.18	23.09	11.28	237 (120)	Moderately High
5	SBI Small Cap Fund	69.71	5,424	0.00	25.65	67.60	47	1.88	33.00	10.33	292 (255)	Moderately High
6	ITI Small Cap Fund	11.04	256	2.66	14.66	82.51	76	2.51	**	9.99	309 (155)	High
7	Edelweiss Small Cap Fund	14.43	529	0.00	31.07	63.52	70	2.43	35.50	9.74	329 (256)	High
8	HDFC Small Cap Fund - Reg.Plan	44.53	9,323	4.69	14.60	75.35	72	1.81	19.03	9.43	346 (248)	Moderately High
Hybrid - Aggressive												
1	UTI Hybrid Equity Fund	186.56	3,623	56.53	17.64	5.82	69	1.99	13.56	18.43	22 (22)	Moderate
2	HDFC Hybrid Equity Fund - Reg.Plan	61.01	17,168	60.66	9.69	7.23	62	1.81	12.66	18.18	23 (40)	Moderately High
3	Nippon India Equity Hybrid Fund	50.63	4,736	67.16	3.51	4.09	49	1.96	-5.33	17.67	28 (21)	Moderate
4	ICICI Prudential Equity & Debt Fund	151.13	15,479	71.05	5.82	7.07	91	1.78	11.08	15.92	49 (27)	Moderate
5	Tata Hybrid Equity Fund - Reg.Plan	239.12	3,352	59.21	11.16	5.42	33	1.98	10.01	14.50	70 (51)	Moderately Low
6	BOI AXA Mid & Small Cap Equity & Debt Fund	15.19	320	0.00	52.63	27.60	50	2.62	28.84	13.07	138 (286)	Moderately High
7	Baroda Hybrid Equity Fund	62.85	410	75.50	16.40	1.35	47	2.49	14.73	13.04	145 (104)	Moderate
8	Principal Hybrid Equity Fund	86.81	1,084	63.65	10.12	3.75	55	2.24	14.46	12.87	154 (176)	Moderately Low
9	Franklin India Equity Hybrid Fund	139.44	1,352	65.45	12.07	2.63	38	2.20	14.17	12.69	166 (304)	Moderate
10	IDFC Hybrid Equity Fund	12.99	505	49.89	9.63	16.13	45	2.47	13.45	12.45	181 (74)	Moderately High
11	LIC MF Equity Hybrid Fund	117.62	428	58.86	15.10	2.60	41	2.66	8.62	11.77	210 (198)	Moderately Low
Equity - Multi Cap												
1	HDFC Equity Fund - Reg.Plan	702.57	20,546	86.34	9.15	4.31	49	1.87	7.99	27.49	6 (9)	Moderately High
2	Parag Parikh Long Term Equity Fund	34.50	5,008	32.14	14.47	18.68	21	2.06	31.98	23.09	11 (12)	Moderately Low
3	Nippon India Multi Cap Fund	95.92	8,230	57.19	23.32	19.23	52	1.94	1.69	15.35	54 (62)	Moderately High
4	ICICI Prudential Multicap Fund	320.39	5,288	68.93	18.82	10.05	74	1.94	10.52	14.92	64 (41)	Moderate
5	Edelweiss Multi-Cap Fund	16.64	553	71.88	18.31	6.76	48	2.45	12.60	13.66	95 (102)	Moderate
6	Mahindra Manulife Multi Cap Badhat Yojana	13.35	374	74.01	16.72	3.90	49	2.62	16.55	13.24	110 (211)	Moderate
7	SBI Magnum Multi Cap Fund	56.43	8,957	65.82	24.22	6.00	45	1.79	13.33	13.03	147 (141)	Moderate
8	Baroda Multi Cap Fund	116.05	827	69.53	23.49	4.93	48	2.50	17.69	12.78	163 (152)	Moderately High
9	Kotak Standard Multicap Fund - Reg.Plan	40.90	29,807	79.02	18.59	1.12	52	1.64	11.68	12.58	170 (250)	Moderate
10	Franklin India Equity Fund	669.90	8,841	78.61	11.77	7.24	49	1.83	16.13	12.31	185 (175)	Moderate
11	BOI AXA Multi Cap Fund	13.26	53	50.06	20.85	22.21	59	2.73	**	12.19	192 (242)	Moderately High

Equity-oriented schemes derive 88 per cent of their assets from individual investors (Retail + HNI) Institutional investors dominate liquid and money market schemes (84 per cent), debt-oriented schemes (60 per cent) and ETFs, FOFs (91 per cent).

Category Rank	Scheme Name	NAV (₹)	AUM (₹ Cr)	Weightage (%)			No of Companies	Expense Ratio (%)	Return 1 Years (%)	Expected 1 yr return (%)	DSIJ Current Rank (11 Dec 20)	Risk
				Large Cap	Mid Cap	Small Cap						
12	Principal Multi Cap Growth Fund	158.44	679	70.19	18.03	9.90	54	2.49	12.08	12.15	195 (207)	Moderate
13	LIC MF Multi Cap Fund	54.23	334	73.25	19.04	4.02	43	2.57	8.73	11.84	206 (156)	Moderately Low
14	Union Multi Cap	24.09	415	69.16	14.10	10.90	65	2.58	18.79	11.66	216 (278)	Moderate
Equity - Value/Contra												
1	Templeton India Value Fund	268.14	451	76.11	11.58	10.26	36	2.52	14.02	17.77	27 (33)	Moderately High
2	HDFC Capital Builder Value Fund - Reg.Plan	312.33	4,171	75.56	11.59	10.88	67	1.98	12.21	15.75	50 (61)	Moderately High
3	Union Value Discovery Fund	12.33	126	82.58	7.34	4.62	37	2.52	17.77	15.02	60 (46)	Moderate
4	UTI Value Opportunities Fund	74.72	4,340	67.55	24.09	5.72	55	2.00	19.18	14.85	65 (92)	Moderate
5	Invesco India Contra Fund	57.89	5,609	69.87	17.65	8.71	43	1.85	20.81	14.46	72 (168)	Moderate
6	Nippon India Value Fund	84.37	3,160	65.10	20.21	9.44	76	2.13	15.71	14.38	76 (97)	Moderately High
Equity - ELSS												
1	Parag Parikh Tax Saver Fund	13.48	75	44.92	16.63	25.45	24	2.46	27.54	19.11	18 (20)	Moderately Low
2	HDFC Long Term Advantage Fund - Reg.Plan	404.52	1,237	73.92	3.90	15.11	28	2.30	10.27	16.71	36 (36)	Moderate
3	DSP Tax Saver Fund	57.72	6,325	68.71	19.09	10.34	57	1.83	14.50	15.27	57 (70)	Moderate
4	PGIM India Long Term Equity Fund	16.72	308	81.19	5.28	11.26	35	2.48	16.60	14.64	68 (58)	Moderate
5	HDFC TaxSaver - Reg.Plan	528.84	7,263	83.04	10.83	4.83	61	2.03	4.96	14.35	77 (64)	Moderate
6	Mirae Asset Tax Saver Fund	22.48	4,463	72.24	19.96	5.63	55	1.84	21.18	14.18	81 (90)	Moderately High
7	Tata India Tax Savings Fund - Reg.Plan	20.82	2,342	81.58	11.18	6.00	32	2.07	10.18	13.92	87 (94)	Moderate
8	Edelweiss Long Term Equity Fund (Tax Savings)	52.90	127	71.96	17.19	7.44	52	2.39	12.03	13.91	88 (100)	Moderate
9	Principal Tax Savings Fund	239.08	453	77.36	13.86	4.73	59	2.57	17.67	13.69	94 (98)	Moderate
10	Nippon India Tax Saver Fund	53.61	9,987	79.18	11.12	9.46	68	1.93	2.87	13.59	97 (72)	Moderately High
11	UTI Long Term Equity Fund	106.65	1,338	62.35	28.11	8.17	62	2.43	19.33	13.37	102 (214)	Moderate
12	Motilal Oswal Long Term Equity Fund	19.56	1,785	68.37	27.83	3.51	29	2.15	6.72	13.19	122 (308)	Moderately High
13	ICICI Prudential Long Term Equity Fund	431.72	6,514	77.55	7.39	12.06	67	2.07	13.59	12.80	162 (132)	Moderate
14	Franklin India Taxshield	621.18	4,053	75.73	14.54	5.18	53	1.89	10.46	12.64	167 (262)	Moderately High
Hybrid - Equity Savings												
1	Nippon India Equity Savings Fund	10.92	360	62.37	2.60	2.18	35	2.57	-6.12	16.42	46 (30)	Low
2	UTI Equity Savings Fund	11.34	182	69.74	8.40	0.00	40	1.53	9.91	15.00	61 (57)	Moderately Low
3	HDFC Equity Savings Fund - Reg.Plan	40.26	2,684	60.80	6.63	3.89	75	2.06	8.43	14.47	71 (65)	Moderately Low
4	Mahindra Manulife Eq. Savings Dhan Sanchay Yojana	13.09	201	61.11	6.24	1.56	42	2.42	12.39	11.43	226 (208)	Low
5	Edelweiss Equity Savings Fund	16.12	77	59.38	4.94	1.21	80	1.74	12.03	11.18	245 (192)	Low
6	Baroda Equity Savings Fund	11.51	374	70.74	5.40	0.00	57	2.38	11.75	10.94	256 (331)	Moderately Low
7	ICICI Prudential Equity Savings Fund	15.26	1,069	71.06	3.46	4.32	64	1.35	5.31	10.52	280 (180)	Low
8	Sundaram Equity Savings Fund	11.41	93	65.66	4.08	0.77	43	2.55	6.47	10.31	293 (257)	Low
Hybrid - Dynamic Asset Allocation/Balanced Advantage												
1	HDFC Balanced Advantage Fund - Reg.Plan	214.78	38,067	69.70	12.22	8.87	100	1.64	9.73	27.22	7 (7)	Moderate
2	Edelweiss Balanced Advantage Fund	29.56	1,692	58.60	10.03	3.30	80	2.13	21.80	12.52	176 (210)	Moderately Low
3	Shriram Balanced Advantage Fund	11.65	42	57.34	10.84	3.10	57	2.64	13.43	12.26	188 (199)	Moderately Low
4	Nippon India Balanced Advantage Fund	102.79	2,856	45.98	17.59	4.31	62	2.00	10.83	12.23	190 (234)	Moderately Low
5	L&T Balanced Advantage Fund	28.17	956	56.94	7.79	1.43	53	2.30	12.49	12.08	201 (252)	Moderately Low
6	ICICI Prudential Balanced Advantage Fund	42.09	26,123	66.79	7.29	1.18	101	1.74	12.27	11.57	222 (179)	Moderately Low
Solution Oriented												
1	ICICI Prudential Retire.Fund - Hybrid Aggressive	11.62	77	77.84	1.87	0.03	23	2.43	11.73	16.95	32 (31)	Moderately Low
2	ICICI Prudential Child Care - Gift Fund	153.57	630	53.81	14.28	4.32	29	2.47	7.61	15.36	53 (38)	Moderately Low
3	ICICI Prudential Retire.Fund - Pure Equity	11.32	70	83.26	7.70	0.57	27	2.63	9.48	14.96	62 (49)	Moderately Low
4	Nippon India Retire.Fund - Wealth Creation Scheme	13.05	1,697	71.87	17.46	7.83	69	2.19	-0.08	13.66	96 (79)	Moderate
5	HDFC Retire.Savings Fund - Equity - Reg.Plan	19.81	1,146	42.12	16.43	31.61	69	2.42	17.82	13.53	99 (93)	Moderately High
6	UTI CCF Investment Plan	44.57	330	62.19	27.83	8.48	64	2.74	18.49	13.32	104 (216)	Moderate
7	HDFC Retire.Savings Fund - Hybrid Eq. - Reg.Plan	19.35	493	38.70	11.73	22.94	55	2.55	15.06	12.54	172 (177)	Moderately Low
Hybrid - Multi Asset Allocation												
1	UTI Multi Asset Fund	38.70	663	69.14	11.22	0.00	53	2.50	12.61	13.01	149 (86)	Moderately Low
2	ICICI Prudential Multi Asset Fund	302.12	9,987	65.38	5.11	4.67	58	1.75	12.28	12.73	165 (47)	Low
Equity - Dividend Yield												
1	UTI Dividend Yield Fund	76.21	2,233	69.23	22.30	6.49	47	2.14	19.05	18.60	21 (19)	Low
2	Aditya Birla Sun Life Dividend Yield Fund	184.19	663	32.82	26.63	28.05	50	2.53	17.54	17.14	31 (25)	Moderately Low

All the NAV figures are for date Dec 11, 2020. Trailing returns are also calculated for the same date. AUM, weightage of a stocks, number of companies and expense ratio are for the period ending Nov 2020. All the raw data is provided by Dion Global Solutions Ltd.