



### TECHNICALS

#### MARKET OUTLOOK

**NIFTY (8526)** CNX Nifty opened positive and consolidated around 8600 levels in the first half of the session. However, in the last hour of trade it pared the gains of previous three trading sessions and fell down sharply towards 8500 levels. Finally it ended the day below its 13 EMA with the loss of around 40 points. Now it has to hold above 8520 zones to witness up move towards 8560-8580 zones while if it fails to hold 8500 then profit booking may drag the index towards 8440 levels. Traders are required to be cautious as volatility is likely to remain ahead of the Quarterly results season.

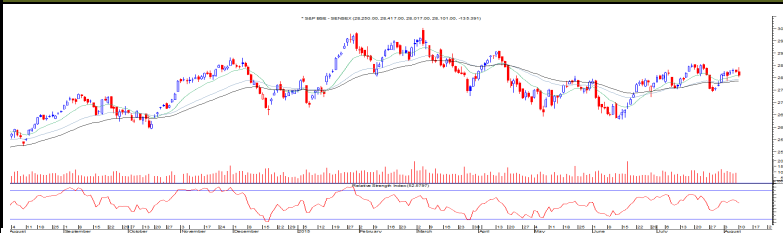
#### CNX NIFTY



#### COMMENTS

**SENSEX (28102)** BSE Sensex opened positive and was hovering near 28350 levels. However, it witnessed sharp selling pressure in the final hours of the trade and ended the session with the loss of around 135 points. Now, the index needs to hold above 28100 levels to witness support base buying towards 28300 and 28500 levels. However, if it fails to hold 28000 levels then bears may drag the index towards 27800 levels.

#### S&P BSE~SENSEX



#### PIVOT TABLE

	NIFTY	SENSEX	BANK NIFTY	CNX IT
HIGH	8622	28418	19071	11697
LOW	8498	28018	18781	11500
CLOSE	8526	28102	18875	11574
PIVOT	8548	28179	18909	11590
R 1	8599	28340	19037	11680
R 2	8672	28579	19199	11787
S 1	8475	27941	18747	11484
S 2	8425	27779	18619	11394



Tuesday, August 11, 2015

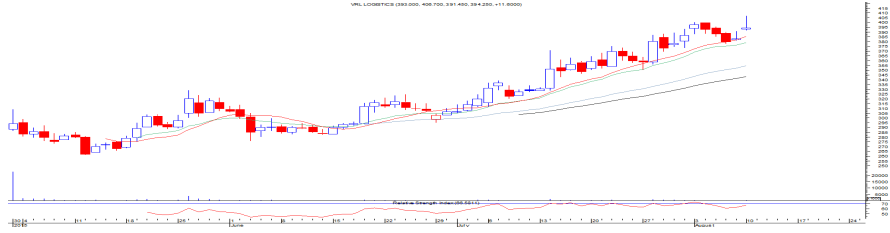
### TECHNICAL CALLS

#### VRLOGISTICS: Rs. 394

**EXECUTION PRICE RANGE**  
Buy Between Rs. 386 To Rs. 390

**STOP LOSS**  
380.00

**TARGET**  
404.00



**VRLOGISTICS** registered lifetime high at 406 levels even after sluggish move in the market. It has been making higher highs – higher lows from last seven weeks. It is holding well above its 13, 50 and 200 DMA. One can buy the stock with the stop loss of 380 for the upside target of 404 levels.

#### TATA COMM: Rs. 447

**EXECUTION PRICE RANGE**  
Buy Between Rs. 440 To Rs. 444

**STOP LOSS**  
432.00

**TARGET**  
462.00



**TATACOMM** is witnessing buying interest after the correction of last two weeks where it fell down from 491 to 428 levels. It has taken multiple supports near to 428-430 zones and looks attractive in terms of risk reward ratio. Technical indicators are also suggest bounce back move in the stock thus one can buy the stock with stop loss of 432 for the upside target of 462 levels.



Tuesday, August 11, 2015

INDIAN INDICES					
INDICES	CLOSE	CHANGE	% CHG		
SENSEX	28102	-134.67	-0.48		
NIFTY	8526	-39.00	-0.46		
TURNOVER & MARKET CAP					
Rs. (Cr.)	YEST.DAY	PREV.DAY	% CHG		
BSE Cash	3444	3432	0.35		
NSE Cash	16367	17505	-6.50		
Derivatives(bn)	1331	1565	-15.00		
INSTITUTIONAL ACTIVITIES					
DII Equity	34	-112	-130.49		
FII Equity	-94	109	-186.06		
FII F&O	-158	945	-116.76		
ADVANCES & DECLINES					
EXCHANGE	ADV	DECLINES	TOTAL		
BSE	1441	1577	3018		
NSE	664	851	1515		
INDIAN ADR's					
ADR	CLOSE	PREV.CLOSE	% CHG		
Infosys	17.31	17.53	1.27		
HDFC Bank	62.60	62.99	0.62		
Wipro	12.52	12.49	-0.24		
ICICI Bank	10.22	10.14	-0.78		
Sterlite Inds.	14.75	14.66	-0.61		
Dr. Reddy's Lab	66.51	67.26	1.13		
SECTORAL INDICES					
BSE			NSE		
INDICES	CLOSE	%	INDICES	CLOSE	%
CNX Bank	18875	-0.10	BSE MIDcap	11555	-0.02
CNX IT	11574	-0.20	BSE SmallCap	12055	-0.41
CNX Reality	184	0.49	BSE 200	3610	-0.41
CNX FMCG	20790	-0.53	OTHER IMP.DATA		
CNX Infra	3294	-0.71	10 Yr Gsec yield	7.80	
CNX Pharma	12639	-0.02	RS/\$	63.89	
BSE Auto	19678	-0.44	\$ Index	97.84	
BSE Metal	8583	-1.04	Brent Crude (\$)	48.91	
CNX MNC	10556	0.19	Gold (\$)	1094.69	
BSE 500	11312	-0.41	Silver (\$)	14.94	
Nifty Midcap	3509	0.19	PE	CURRENT	AVG
BSE 100	8683	-0.45	NIFTY	22.2	19.7

TOP OUTPERFORMERS					
SENSEX			NIFTY		
SYMBOL	CLOSE	%	SYMBOL	CLOSE	%
Jindal Steel	82.1	4.39	BHEL	272.5	2.37
BHEL	271.2	2.01	HEROMOTOCORP	2704.0	1.58
DLF	128.2	1.95	MARUTI	4497.2	0.99
Hero Motocorp	2704.9	1.67	TCS	2572.1	0.79
Maruti	4497.7	1.03	BAJAJ AUTO	2554.6	0.68
TOP UNDERPERFORMERS					
SENSEX			NIFTY		
SYMBOL	CLOSE	%	SYMBOL	CLOSE	%
JP Asso.	11.0	-7.47	ONGC	275.1	-2.76
ONGC	275.1	-2.55	NTPC	131.4	-1.87
M&M	1360.5	-1.96	IDEA	163.9	-1.83
NTPC	131.3	-1.91	CAIRN	164.0	-1.71
Tata Motors	385.9	-1.71	COAL INDIA	408.0	-1.63
BSE 500					
TOP OUTPERFORMERS			TOP UNDERPERFORMERS		
SYMBOL	CLOSE	%	SYMBOL	CLOSE	%
Chennai Petroleum Corp Ltd	205.0	14.88	Mangalore Refine	73.5	-10.31
Ratnamani Metals & Tubes Ltd	673.7	11.79	Tata Teleservices	7.1	-8.54
Chambal Fertilizers and Chemicals	69.1	9.86	ISGEC Heavy En	6258.8	-8.07
Godrej Properties Ltd	301.1	6.42	Intellect Design A	172.1	-6.39
PFC India Financial Services Ltd	48.8	5.86	Jaiprakash Power	7.5	-6.23
Inox Leisure Ltd	246.9	5.83	Alembic Pharmac	669.5	-6.21
Nirlon Ltd	182.1	5.57	Cox & Kings Ltd	284.5	-5.59
Trent Ltd	1301.6	5.24	BEML Ltd	1405.9	-5.42
Punjab & Sind Bank	44.9	5.16	Kirloskar Oil Engi	283.6	-5.40
eClerx Services Ltd	1590.8	5.05	Abbott India Ltd	4548.9	-5.30
Divi's Laboratories Ltd	2065.9	4.80	Castex Technolog	130.1	-4.97
Aarti Industries	443.6	4.80	Gold Line Internat	472.7	-4.74
Glenmark Pharmaceuticals Ltd	1054.2	4.54	Lakshmi Machine	3779.0	-4.44
Jindal Steel & Power Ltd	82.1	4.39	Sobha Ltd	336.2	-4.38
Essar Oil Ltd	205.3	4.37	Sonata Software	147.2	-4.17
Techno Electric & Engineering Co L	551.0	4.25	Financial Technol	153.6	-4.15
Dishman Pharmaceuticals & Chemi	207.0	4.23	Opto Circuits Indi	21.2	-3.85
Mindtree Ltd	1352.4	4.21	FDC Ltd/India	182.2	-3.73
Polaris Consulting & Services Ltd/In	208.0	4.18	Welspun Corp Ltd	138.6	-3.58
Anant Raj Ltd	44.9	3.94	JK Tyre & Industr	116.3	-3.57
Sadbhav Engineering Ltd	346.7	3.69	Voltas Ltd	306.1	-3.54
Natco Pharma Ltd	2479.4	3.58	PMC Fincorp Ltd	3.8	-3.52
Alcargio Logistics Ltd	338.2	3.57	Ipca Laboratories	758.2	-3.40
Britannia Industries Ltd	3312.2	3.45	Eros International	548.3	-3.32
Unichem Laboratories Ltd	247.6	3.43	GIC Housing Fina	211.8	-3.31



Tuesday, August 11, 2015

### TRENDER+ OF NIFTY 50 STOCKS

SCRIP NAME	OPEN	HIGH	LOW	CLOSE	PIVOT	R 1	R 2	S 1	S 2	TRENDER+	DAILY PROJECTED RANGE
ACC	1398	1409	1374	1386	1389	1405	1425	1370	1354	Down	1397 - 1362
AMBUJA CEMENT	229	231	225	227	227	230	233	224	221	UP	229 - 223
ASIAN PAINTS	904	917	895	902	905	914	926	893	883	Down	909 - 888
AXIS BANK	583	585	571	576	577	584	591	569	563	Down	580 - 566
BAJAJ AUTO	2550	2574	2542	2555	2557	2572	2589	2540	2525	UP	2580 - 2548
BHARTI AIRTEL	411	415	408	410	411	415	419	407	403	UP	413 - 405
BHEL	262	275	260	272	269	278	284	263	254	Down	281 - 266
BPCL	960	980	940	947	956	971	995	931	916	UP	963 - 924
CAIRN INDIA	168	168	162	164	165	167	171	161	159	Down	166 - 160
CIPLA	717	724	711	715	717	723	730	709	703	UP	720 - 706
COAL INDIA	418	419	406	408	411	416	424	403	398	Down	413 - 400
LUPIN	1705	1725	1681	1696	1700	1720	1745	1676	1656	UP	1710 - 1666
Dr.REDDY'S LABS	4225	4318	4225	4260	4268	4310	4361	4217	4174	UP	4336 - 4242
GAIL INDIA	343	347	341	344	344	347	350	341	338	Down	349 - 343
GRASIM INDS	3810	3836	3744	3773	3784	3825	3877	3733	3692	UP	3805 - 3712
HCL TECH	939	950	930	936	939	948	959	928	919	Flat	943 - 929
HDFC	1306	1333	1296	1306	1312	1327	1349	1290	1274	Flat	1319 - 1282
HDFC BANK	1095	1106	1088	1095	1096	1104	1114	1086	1078	Flat	1100 - 1082
HERO MOTOCORP	2665	2730	2663	2704	2699	2735	2766	2668	2631	UP	2751 - 2663
HINDALCO	110	112	107	108	109	111	114	106	104	Down	110 - 105
HINDUSTAN UNILEVER	905	909	901	906	905	910	913	902	897	Down	912 - 904
ICICI BANK	311	314	307	310	310	313	317	306	303	Down	312 - 305
IDEA	168	168	163	164	165	167	170	162	160	Down	166 - 161
IDFC	148	149	146	147	147	149	150	146	145	Down	149 - 146
INDUSIND BANK	947	958	937	944	946	956	968	935	925	Down	951 - 930
INFOSYS	1098	1106	1067	1086	1086	1106	1126	1067	1047	UP	1096 - 1057
ITC	325	327	319	321	323	326	330	318	315	Down	324 - 316
ULTRATECH CEMENT	3219	3229	3155	3175	3186	3217	3260	3143	3112	Down	3202 - 3128
TECH MAHINDRA	536	542	527	531	533	540	549	524	518	Down	537 - 521
KOTAK MAHINDRA BANK	708	717	700	707	708	716	725	699	691	Flat	712 - 695
LARSEN & TOUBRO	1832	1844	1804	1821	1823	1842	1863	1802	1782	UP	1832 - 1792
MAHINDRA & MAHINDRA	1380	1395	1352	1360	1369	1386	1412	1343	1326	Down	1377 - 1334
MARUTI SUZUKI	4470	4508	4446	4497	4484	4521	4546	4459	4422	UP	4534 - 4472
NIMDC	105	105	104	104	104	105	106	104	103	Flat	105 - 104
NTPC	134	135	131	131	132	134	136	130	128	Down	133 - 129
ONGC	284	285	274	275	278	282	289	271	267	Flat	280 - 269
POWERGRID	141	142	137	138	139	141	143	136	135	Down	140 - 136
PUNJAB NATIONAL BANK	159	162	158	159	160	162	164	157	156	Down	163 - 159
RELIANCE INDS	985	990	965	969	974	984	1000	959	949	Down	979 - 954
ZEE ENTERTAINMENT ENTER	410	415	406	410	410	415	420	405	401	Down	412 - 403
SAIL	61	61	60	60	60	61	62	59	59	Down	61 - 59
SBI	282	286	280	283	283	286	289	280	277	Down	287 - 281
VEDANTA Ltd	131	131	126	128	128	131	133	126	124	Flat	129 - 125
YES BANK	824	834	812	817	821	830	843	808	799	Down	826 - 803
SUNPHARMA	856	857	831	841	843	855	869	829	817	Down	849 - 823
TATA MOTORS	384	396	382	386	388	394	401	380	374	Flat	397 - 384
TATA POWER	70	70	69	69	69	70	71	69	68	Down	70 - 68
TATA STEEL	263	265	260	261	262	264	267	259	257	Flat	263 - 258
TCS	2572	2589	2557	2572	2573	2589	2605	2556	2540	UP	2597 - 2564
WIPRO	568	573	560	564	566	572	579	558	553	Down	569 - 555



## HOW TO TRADE USING THE TRENDER+

## CLOSING PRICES

Closing price is the price at which scrip closes on the date mentioned in the report. Traders may initiate their intraday trade on this level. The stock or index should sustain above or below the pivot else you should exit the trade.

## TREND

Trend is the level at which the tendency of stocks can be identified. For best results, you can use the 'trender' to trade. A 'weak' trend denoted by "DOWN" means that traders can trade with a negative bias. If the trend is 'strong', denoted by "UP", one can trade with a positive bias on the long side. Base price should be the pivot point price.

## IF THE TREND IS UP

Ideally, for a buy position, buy at the pivot point and use S1 as the stop loss for a target of levels around R2 and higher.

## IF THE TREND IS DOWN

Ideally, for a sell position, sell at the pivot point and use R1 as a stop loss and S2 or lower levels as a target level.

TRENDER + : This is a broad based technical trend of the stock prevalent, may or may not be necessarily for the day.

DAILY PROJECTED RANGE : Projected Daily high and low are indicative range for the day, if the price moves out of the range the trend in that side may accelerate and turn bullish or bearish.

THE TREND AND THE DAILY PROJECTED RANGE IS BASED ON CERTAIN SIMPLE CALCULATIONS WHICH IS PROVIDED BY BLOOMBERG, EXCLUSIVELY USED BY ANAND RATHI

**Disclaimer**-This report has been issued by Anand Rathi Share and Stock Brokers Limited (ARSSBL), which is regulated by SEBI. The information herein was obtained from various sources; we do not guarantee its accuracy or completeness. Neither the information nor any opinion expressed constitutes an offer, or an invitation to make an offer, to buy or sell any securities or any options, futures or other derivatives related to such securities ("related investments"). ARSSBL and its affiliates may trade for their own accounts as market maker / jobber and/or arbitrageur in any securities of this issuer(s) or in related investments, and may be on the opposite side of public orders. ARSSBL, its affiliates, directors, officers, and employees may have a long or short position in any securities of this issuer(s) or in related investments. ARSSBL or its affiliates may from time to time perform investment banking or other services for, or solicit investment banking or other business from, any entity mentioned in this report. This research report is prepared for private circulation. It does not have regard to the specific investment objectives, financial situation and the particular needs of any specific person who may receive this report. Investors should seek financial advice regarding the appropriateness of investing in any securities or investment strategies discussed or recommended in this report and should understand that statements regarding future prospects may not be realized. Investors should note that income from such securities, if any, may fluctuate and that each security's price or value may rise or fall. Past performance is not necessarily a guide to future performance. Foreign currency rates of exchange may adversely affect the value, price or income of any security or related investment mentioned in this report.

ANAND RATHI SHARE AND STOCK BROKERS LIMITED  
4th Floor, Silver Metropolis, Jaicoach Compound Opposite Bimbisar Nagar, Goregaon(East), Mumbai - 400063.

Tel No: +91 22 4001 3700 | Fax No: +91 22 4001 3770 | Website: www.rathi.com