

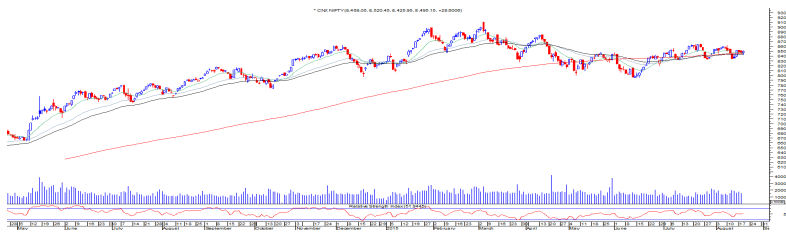


TECHNICALS

MARKET OUTLOOK

NIFTY (8495) CNX opened on flattish note and traded with negative bias in the wee hours of the session. However in the late afternoon it pared the losses as the bulls overpowered the bears. It has been consolidating from last four trading sessions and settled the day with the gains of 30 points above its 200 DMA. Now it has to hold above 8480 zones to witness buying interest towards 8520 and 8550 levels while holding below 8440 may attract profit booking decline towards 8400 and 8380 levels.

CNX NIFTY



COMMENTS

SENSEX (27932) BSE Sensex opened on a flattish note but gained its momentum in the second half of the session. It ended the day with the gains of around 100 points. It has been consolidating in a range of 28050 to 27750 levels from four trading session and now it need to move on the either side of the range to start fresh rally. It has to hold above 27900 levels to move towards 28050 then 28250 levels while holding below 27800 levels it may drift down towards 27500 and 27250 levels.

S&P BSE~SENSEX



PIVOT TABLE

	NIFTY	SENSEX	BANK NIFTY	CNX IT
HIGH	8520	28021	18804	12314
LOW	8426	27721	18636	12165
CLOSE	8495	27932	18703	12249
PIVOT	8481	27891	18714	12243
R 1	8535	28062	18792	12321
R 2	8575	28192	18882	12392
S 1	8441	27761	18625	12172
S 2	8386	27591	18547	12094



Thursday, August 20, 2015

TECHNICAL CALLS

BHARATFORG: Rs. 1280

EXECUTION PRICE RANGE
Buy Between Rs. 1260 To Rs. 1270

STOP LOSS
1240.00

TARGET
1315.00



BHARATFORG has crossed and closed above immediate hurdle of 1260 zones and looks strong to head towards 1315 and 1350 levels. It has seen huge buying interest in last couple of trading sessions and holding well above its 50 DMA. We are recommending to buy the stock at decline with the stop loss of 1240 for the upside target of 1315 levels.

KSL: Rs. 161

EXECUTION PRICE RANGE
Buy Between Rs. 158 To Rs. 160

STOP LOSS
154.00

TARGET
169.00



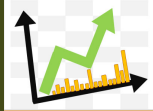
KSL has been making higher top - higher bottom formation from last four weeks. Recently, it took support near the 145 zones and is moving upwards with rising trading volumes. We are recommending to buy the stock with the stop loss of 154 for the upside target of 169 levels.



Thursday, August 20, 2015

INDIAN INDICES					
INDICES	CLOSE	CHANGE	% CHG		
SENSEX	27932	100.10	0.36		
NIFTY	8495	28.60	0.34		
TURNOVER & MARKET CAP					
Rs. (Cr.)	YEST.DAY	PREV.DAY	% CHG		
BSE Cash	3155	2929	7.72		
NSE Cash	17364	17015	2.05		
Derivatives(bn)	2581	2676	-3.56		
INSTITUTIONAL ACTIVITIES					
DII Equity	128	184	-30.60		
FII Equity	-255	142	-279.44		
FII F&O	1048	-91	-1246.22		
ADVANCES & DECLINES					
EXCHANGE	ADV	DECLINES	TOTAL		
BSE	1507	1254	2761		
NSE	745	748	1493		
INDIAN ADR's					
ADR	CLOSE	PREV.CLOSE	% CHG		
Infosys	17.90	18.00	0.56		
HDFC Bank	62.89	61.99	-1.43		
Wipro	12.49	12.54	0.40		
ICICI Bank	9.80	9.84	0.41		
Sterlite Inds.	14.90	14.90	0.00		
Dr. Reddy's Lab	64.51	65.84	2.06		
SECTORAL INDICES					
BSE			NSE		
INDICES	CLOSE	%	INDICES	CLOSE	%
CNX Bank	18703	-0.41	BSE MIDcap	11549	0.06
CNX IT	12249	0.74	BSE SmallCap	11921	0.24
CNX Realty	178	-0.86	BSE 200	3593	0.24
CNX FMCG	20326	0.21	OTHER IMP.DATA		
CNX Infra	3229	0.22	10 Yr Gsec yield	7.73	
CNX Pharma	13336	2.74	RS/\$	65.12	
BSE Auto	19545	0.46	\$ Index	96.95	
BSE Metal	7653	-1.33	Brent Crude (\$)	48.88	
CNX MNC	10396	0.37	Gold (\$)	1122.45	
BSE 500	11249	0.25	Silver (\$)	14.93	
Nifty Midcap	3445	0.37	PE	CURRENT	AVG
BSE 100	8651	0.31	NIFTY	22.1	19.7

TOP OUTPERFORMERS					
SENSEX			NIFTY		
SYMBOL	CLOSE	%	SYMBOL	CLOSE	%
JP Asso.	11.0	9.39	ACC	1446.9	4.29
Jindal Steel	74.1	4.44	SUNPHARMA	927.8	4.27
Sun Pharma	927.3	4.32	LUPIN	1795.4	2.53
Wipro	583.6	2.15	WIPRO	584.8	2.38
Hero Motocorp	2690.0	1.82	HCL TECH	988.2	1.91
TOP UNDERPERFORMERS					
SENSEX			NIFTY		
SYMBOL	CLOSE	%	SYMBOL	CLOSE	%
Hindalco	86.3	-3.14	HINDALCO	86.2	-3.09
SBI	278.1	-2.08	BANK OF BAROD	208.8	-1.95
Coal India	356.9	-1.96	PNB	168.0	-1.52
Tata power	67.4	-1.03	YES BANK	774.3	-1.49
DLF	126.7	-1.02	AXIS BANK	554.0	-1.31
BSE 500					
TOP OUTPERFORMERS			TOP UNDERPERFORMERS		
SYMBOL	CLOSE	%	SYMBOL	CLOSE	%
Symphony Ltd	2249.3	16.23	Amtek Auto Ltd	89.0	-30.77
FDC Ltd/India	216.8	15.54	Metalyt Forgings	81.8	-8.51
Geometric Ltd	143.7	11.27	DEN Networks Ltd	130.7	-7.11
Atul Ltd	1500.9	10.23	Castex Technology	91.0	-4.96
Granules India Ltd	130.4	9.67	Indiabulls Real Es	61.4	-4.96
Unichem Laboratories Ltd	263.5	9.40	Allahabad Bank	93.6	-4.54
Jaiprakash Associates Ltd	11.0	9.39	Hindustan Zinc Ltd	140.8	-4.45
BF Utilities Ltd	625.9	8.24	Credit Analysis & f	1256.4	-4.38
Sun Pharma Advanced Research Co	433.0	8.24	Gujarat Pipavav P	199.9	-4.33
3M India Ltd	11627.3	8.13	Sterlite Technologi	85.1	-3.62
Shipping Corp of India Ltd	81.7	8.00	Eros International	550.1	-3.60
Natco Pharma Ltd	2408.3	7.54	Prestige Estates P	208.6	-3.52
Shilpa Medicare Ltd	1130.5	5.76	Future Lifestyle Fa	76.3	-3.42
Jaiprakash Power Ventures Ltd	7.2	5.56	Century Plyboards	188.2	-3.34
Divi's Laboratories Ltd	2411.7	5.53	UCO Bank	53.6	-3.34
HeidelbergCement India Ltd	77.1	5.33	Future Retail Ltd	119.4	-3.32
Jaypee Infratech Ltd	15.5	5.30	Indian Bank	148.7	-3.29
WABCO India Ltd	7285.0	5.05	Sterling Holiday R	243.9	-3.21
Network 18 Media & Investments Ltd	57.8	5.00	TV Today Network	235.1	-3.19
International Paper APPM Ltd	366.7	4.85	Hindalco Industrie	86.3	-3.14
Welspun India Ltd	875.7	4.63	Apollo Tyres Ltd	195.6	-3.12
Ashoka Buildcon Ltd	185.7	4.56	Neyveli Lignite Co	82.0	-3.08
Jindal Steel & Power Ltd	74.1	4.44	Corp Bank	53.5	-2.99
Sun Pharmaceutical Industries Ltd	927.3	4.32	Punjab & Sind Bar	44.8	-2.93
ACC Ltd	1447.6	4.21	Dena Bank	45.1	-2.91



Thursday, August 20, 2015

TRENDER+ OF NIFTY 50 STOCKS

SCRIP NAME	OPEN	HIGH	LOW	CLOSE	PIVOT	R 1	R 2	S 1	S 2	TRENDER+	DAILY PROJECTED RANGE
ACC	1393	1454	1390	1447	1430	1471	1495	1406	1366	UP	1483 - 1418
AMBUJIA CEMENT	227	232	225	231	230	234	237	227	223	UP	235 - 228
ASIAN PAINTS	899	903	882	900	895	908	916	887	874	UP	912 - 891
AXIS BANK	561	562	552	554	556	560	565	550	547	Down	558 - 549
BAJAJ AUTO	2519	2555	2497	2543	2532	2566	2590	2508	2473	UP	2578 - 2520
BHARTI AIRTEL	386	386	373	383	381	388	394	375	367	UP	384 - 371
BHEL	260	264	258	262	261	265	267	259	256	Down	266 - 260
BPCL	903	916	884	887	896	908	928	875	864	UP	902 - 869
CAIRN INDIA	150	155	149	152	152	155	158	149	146	Down	156 - 150
CIPLA	687	704	687	696	696	704	713	687	679	UP	709 - 692
COAL INDIA	364	365	355	356	359	363	369	352	348	Down	361 - 350
LUPIN	1759	1808	1753	1786	1795	1818	1840	1763	1731	UP	1829 - 1774
Dr.REDDY'S LABS	4230	4269	4197	4231	4232	4268	4304	4196	4161	UP	4286 - 4214
GAIL INDIA	330	332	328	330	330	332	334	328	326	Down	331 - 327
GRASIM INDS	3710	3760	3686	3736	3727	3769	3801	3695	3653	UP	3785 - 3711
HCL TECH	975	998	972	988	986	1000	1012	974	960	UP	1006 - 980
HDFC	1259	1285	1249	1256	1257	1265	1273	1248	1240	Down	1261 - 1244
HDFC BANK	1085	1087	1075	1082	1081	1088	1093	1076	1069	Down	1084 - 1072
HERO MOTOCORP	2631	2709	2616	2685	2670	2724	2763	2631	2577	UP	2743 - 2651
HINDALCO	89	89	86	86	87	88	90	85	84	Down	88 - 84
HINDUSTAN UNILEVER	869	885	861	876	874	887	898	863	850	Flat	893 - 869
ICICI BANK	301	305	301	305	303	306	308	302	299	UP	307 - 303
IDEA	159	161	157	161	159	162	164	158	155	Flat	163 - 159
IDFC	143	144	141	142	142	143	145	141	140	Down	143 - 140
INDUSIND BANK	966	970	954	957	961	967	976	951	945	UP	964 - 948
INFOSYS	1170	1186	1163	1176	1175	1187	1198	1164	1151	UP	1193 - 1169
ITC	314	318	309	317	315	320	324	311	305	Flat	322 - 313
ULTRATECH CEMENT	3145	3182	3110	3161	3151	3192	3223	3120	3079	UP	3208 - 3136
TECH MAHINDRA	565	565	557	560	561	565	569	556	553	UP	563 - 555
KOTAK MAHINDRA BANK	705	719	697	712	710	722	731	700	688	UP	726 - 705
LARSEN & TOUBRO	1800	1820	1786	1815	1807	1828	1841	1794	1773	UP	1834 - 1800
MAHINDRA & MAHINDRA	1367	1385	1349	1366	1366	1384	1402	1348	1330	UP	1375 - 1339
MARUTI SUZUKI	4627	4687	4606	4672	4655	4704	4736	4623	4574	UP	4720 - 4639
NMDC	96	97	93	96	95	97	98	94	92	Down	98 - 95
NTPC	127	128	126	126	126	127	128	125	125	Down	127 - 125
ONGC	260	263	257	261	260	263	266	258	254	Down	265 - 259
POWERGRID	138	138	136	136	137	138	139	136	135	Down	137 - 135
PUNJAB NATIONAL BANK	170	171	167	168	168	170	172	166	164	UP	169 - 165
RELIANCE INDS	944	961	939	955	952	964	973	942	930	Flat	969 - 947
ZEE ENTERTAINMENT ENTERP	407	411	399	406	405	412	417	400	393	Down	408 - 396
SAIL	56	58	56	58	57	59	60	56	55	Flat	59 - 57
SBI	284	286	276	278	280	284	290	274	269	UP	282 - 272
VEDANTA Ltd	103	105	101	103	103	105	107	101	99	Down	105 - 100
YES BANK	788	799	772	774	782	792	809	764	754	Down	787 - 759
SUNPHARMA	897	930	894	928	917	941	954	904	881	UP	947 - 911
TATA MOTORS	349	355	344	351	350	356	361	345	339	Down	359 - 348
TATA POWER	68	68	67	67	68	68	69	67	66	Down	68 - 67
TATA STEEL	250	253	247	250	250	253	257	247	243	Flat	252 - 245
TCS	2750	2753	2718	2734	2735	2752	2770	2717	2700	UP	2743 - 2708
WIPRO	574	587	572	585	581	590	596	576	566	UP	593 - 578



Thursday, August 20, 2015

HOW TO TRADE USING THE TRENDER+

CLOSING PRICES

Closing price is the price at which scrip closes on the date mentioned in the report. Traders may initiate their intraday trade on this level. The stock or index should sustain above or below the pivot else you should exit the trade.

TREND

Trend is the level at which the tendency of stocks can be identified. For best results, you can use the 'trender' to trade. A 'weak' trend denoted by "DOWN" means that traders can trade with a negative bias. If the trend is 'strong', denoted by "UP", one can trade with a positive bias on the long side. Base price should be the pivot point price.

IF THE TREND IS UP

Ideally, for a buy position, buy at the pivot point and use S1 as the stop loss for a target of levels around R2 and higher.

IF THE TREND IS DOWN

Ideally, for a sell position, sell at the pivot point and use R1 as a stop loss and S2 or lower levels as a target level.

TRENDER + : This is a broad based technical trend of the stock prevalent, may or may not be necessarily for the day.

DAILY PROJECTED RANGE : Projected Daily high and low are indicative range for the day, if the price moves out of the range the trend in that side may accelerate and turn bullish or bearish.

THE TREND AND THE DAILY PROJECTED RANGE IS BASED ON CERTAIN SIMPLE CALCULATIONS WHICH IS PROVIDED BY BLOOMBERG, EXCLUSIVELY USED BY ANAND RATHI

Disclaimer-This report has been issued by Anand Rathi Share and Stock Brokers Limited (ARSSBL), which is regulated by SEBI. The information herein was obtained from various sources; we do not guarantee its accuracy or completeness. Neither the information nor any opinion expressed constitutes an offer, or an invitation to make an offer, to buy or sell any securities or any options, futures or other derivatives related to such securities ("related investments"). ARSSBL and its affiliates may trade for their own accounts as market maker / jobber and/or arbitrageur in any securities of this issuer(s) or in related investments, and may be on the opposite side of public orders. ARSSBL, its affiliates, directors, officers, and employees may have a long or short position in any securities of this issuer(s) or in related investments. ARSSBL or its affiliates may from time to time perform investment banking or other services for, or solicit investment banking or other business from, any entity mentioned in this report. This research report is prepared for private circulation. It does not have regard to the specific investment objectives, financial situation and the particular needs of any specific person who may receive this report. Investors should seek financial advice regarding the appropriateness of investing in any securities or investment strategies discussed or recommended in this report and should understand that statements regarding future prospects may not be realized. Investors should note that income from such securities, if any, may fluctuate and that each security's price or value may rise or fall. Past performance is not necessarily a guide to future performance. Foreign currency rates of exchange may adversely affect the value, price or income of any security or related investment mentioned in this report.

ANAND RATHI SHARE AND STOCK BROKERS LIMITED

4 th Floor , Silver Metropolis , Jaicoach Compound Opposite Bimbisar Nagar, Goregaon(East), Mumbai - 400063.

Tel No: +91 22 4001 3700 | Fax No: +91 22 4001 3770 | Website: www.rathi.com