



TECHNICALS

MARKET OUTLOOK

NIFTY (8300) CNX Nifty opened negative and fell down sharply towards 8225 levels in the wee hours of trade. It witnessed buying activities at the lower levels and recovered partially and gained its 8300 levels by the end of the day. It continued forming lower lows and ended the day with the loss of around 70 points. It has to negate its negative pattern of making lower lows for the weakness to fade out and witness a relief rally. Now it has to cross and hold above 8315-8330 zones to witness relief towards 8380 levels while holding below 8300 levels may continue the selling towards 8225 and 8180 levels. Although the index formed a DOJI candle on daily chart still the traders are required to remain cautious as the negativity still persists in line with the weak global cues ahead of the derivative expiry week.

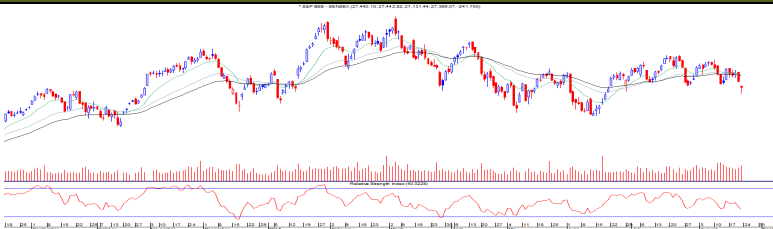
CNX NIFTY



COMMENTS

SENSEX (27366) BSE Sensex opened with a gap down of 167 points and plunged towards 27130 levels. The selling pressure in private sector banks, metal, telecom companies and auto firms led losses as the index edged lower on weakness in Global market. Finally after a partial recovery in the last hour of trade it settle the day at two months low levels with the loss of around 240 points. Now if it sustains below 27500 levels then weakness may continue towards 27000 levels while the hurdle exist at 27800 levels.

S&P BSE~SENSEX



PIVOT TABLE

	NIFTY	SENSEX	BANK NIFTY	CNX IT
HIGH	8322	27443	18119	12103
LOW	8225	27131	17842	11825
CLOSE	8300	27366	18057	12032
PIVOT	8282	27313	18006	11987
R 1	8340	27495	18170	12148
R 2	8380	27625	18283	12264
S 1	8243	27184	17893	11871
S 2	8185	27002	17729	11709



Monday, August 24, 2015

TECHNICAL CALLS

HINDUNILVR: Rs. 884

EXECUTION PRICE RANGE
Buy Between Rs. 861 To Rs. 870

STOP LOSS
848.00

TARGET
901.00



HINDUNILVR is moving after the consolidation of last six trading sessions and crossed its immediate hurdle of 880 zones. It has managed to hold its support base even after weakness in the broader market. Thus indicating that buying interest may continue in the counter towards 901 and higher levels. So we are recommending to buy the stock with stop loss of 848 levels for the immediate upside target of 901 levels.

BAJAJ CORP: Rs. 505

EXECUTION PRICE RANGE
Buy Between Rs. 490 To Rs. 495

STOP LOSS
482.00

TARGET
514.00



BAJAJCORP is hovering near the lifetime high levels and is moving after retracing the weakness of April and May months. It gave the highest daily close above its 50, 35 and 200 DMA even after decline in the broader market. So we are recommending buying the stock with stop loss of 482 levels for the immediate upside target of 514 levels.



Monday, August 24, 2015

INDIAN INDICES					
INDICES	CLOSE	CHANGE	% CHG		
SENSEX	27366	-241.75	-0.88		
NIFTY	8300	-72.80	-0.87		
TURNOVER & MARKET CAP					
Rs. (Cr.)	YEST.DAY	PREV.DAY	% CHG		
BSE Cash	3463	3355	3.22		
NSE Cash	19545	20480	-4.57		
Derivatives(bn)	3415	2374	43.85		
INSTITUTIONAL ACTIVITIES					
DII Equity	1524	568	168.39		
FII Equity	-2341	-1007	132.37		
FII F&O	-904	-754	19.90		
ADVANCES & DECLINES					
EXCHANGE	ADV	DECLINES	TOTAL		
BSE	969	1862	2831		
NSE	474	1044	1518		
INDIAN ADR's					
ADR	CLOSE	PREV.CLOSE	% CHG		
Infosys	17.31	17.05	-1.50		
HDFC Bank	60.19	59.94	-0.42		
Wipro	12.01	11.93	-0.67		
ICICI Bank	9.38	9.09	-3.09		
Sterlite Inds.	14.34	14.19	-1.05		
Dr. Reddy's Lab	65.09	62.56	-3.89		
SECTORAL INDICES					
BSE			NSE		
INDICES	CLOSE	%	INDICES	CLOSE	%
CNX Bank	18057	-1.24	BSE MIDcap	11217	-0.89
CNX IT	12032	0.39	BSE SmallCap	11610	-0.60
CNX Realty	167	-2.60	BSE 200	3512	-0.84
CNX FMCG	20705	0.31	OTHER IMP.DATA		
CNX Infra	3123	-1.85	10 Yr Gsec yield	7.79	
CNX Pharma	13470	0.05	RS/\$	65.83	
BSE Auto	18795	-2.07	\$ Index	95.01	
BSE Metal	7400	-0.93	Brent Crude (\$)	45.46	
CNX MNC	10198	-0.46	Gold (\$)	1160.95	
BSE 500	10991	-0.83	Silver (\$)	15.32	
Nifty Midcap	3344	-0.46	PE	CURRENT	AVG
BSE 100	8457	-0.89	NIFTY	21.6	19.7

TOP OUTPERFORMERS					
SENSEX			NIFTY		
SYMBOL	CLOSE	%	SYMBOL	CLOSE	%
Jindal Steel	70.7	3.97	HINDUSTAN UN	884.2	1.39
Hindalco	86.1	1.24	AMBUJA	227.1	1.38
Infosys	1150.6	1.09	INFY	1149.9	1.35
HUL	881.7	0.93	HINDALCO	86.0	1.24
Cipla/India	697.4	0.87	IDFC	140.0	1.05
TOP UNDERPERFORMERS					
SENSEX			NIFTY		
SYMBOL	CLOSE	%	SYMBOL	CLOSE	%
DLF	114.1	-5.08	VEDANTA LTD	94.6	-4.06
SESA Goa	94.6	-4.06	IDEA	152.5	-2.90
Bajaj Auto	2407.4	-3.40	INDUSIND	905.3	-2.88
Hero Motocorp	2559.9	-2.81	Zee Entertainment	383.2	-2.86
Tata Motors	332.8	-2.73	TATA MOTORS	332.4	-2.86
BSE 500					
TOP OUTPERFORMERS			TOP UNDERPERFORMERS		
SYMBOL	CLOSE	%	SYMBOL	CLOSE	%
Videcon Industries Ltd	137.3	14.94	Central Bank of Ir	80.6	-7.57
Srei Infrastructure Finance Ltd	48.6	7.52	Metalyst Forgings	68.3	-7.20
Gujarat Fluorochemicals Ltd	726.4	5.67	Sunrise Asian Ltd	442.4	-6.53
Jubilant Life Sciences Ltd	369.1	4.98	Balrampur Chini N	46.2	-5.13
Lycos Internet Ltd	30.5	4.64	DLF Ltd	114.1	-5.08
Delta Corp Ltd	78.7	4.45	Castex Technolog	82.2	-4.97
Escorts Ltd	166.9	4.25	Just Dial Ltd	915.9	-4.96
JK Tyre & Industries Ltd	117.6	4.12	Oberoi Realty Ltd	235.8	-4.96
Ceat Ltd	1169.1	4.08	Kolte-Patil Develc	162.5	-4.86
Jindal Steel & Power Ltd	70.7	3.97	PMC Fincorp Ltd	3.2	-4.83
Tata Communications Ltd	418.1	3.91	Bombay Dyeing &	70.6	-4.79
Hatsun Agro Products Ltd	415.7	3.91	Tree House Educ	395.7	-4.64
Religare Enterprises Ltd	322.0	3.80	Astra Microwave	111.2	-4.39
Punj Lloyd Ltd	26.4	3.74	Eros International	500.0	-4.33
JB Chemicals & Pharmaceuticals L	276.5	3.73	Gujarat Pipavav F	180.9	-3.93
Granules India Ltd	129.7	3.59	Force Motors Ltd	2637.8	-3.92
DB Realty Ltd	57.8	3.49	Jet Airways India	372.7	-3.91
Relaxo Footwears Ltd	553.3	3.14	Yes Bank Ltd	691.5	-3.88
BASF India Ltd	1331.9	3.08	Vedanta Ltd	94.8	-3.81
Dishman Pharmaceuticals & Chemi	226.7	3.05	Future Retail Ltd	110.5	-3.75
Sunteck Realty Ltd	237.8	2.83	PTC India Ltd	62.1	-3.72
Mindtree Ltd	1415.1	2.70	Gati Ltd	164.6	-3.71
Amara Raja Batteries Ltd	1076.0	2.62	Polaris Consulting	184.6	-3.70
Torrent Pharmaceuticals Ltd	1644.4	2.59	HSIL Ltd	279.1	-3.69
Hathway Cable & Datacom Ltd	46.5	2.54	Rajesh Exports L	566.9	-3.64



Monday, August 24, 2015

TRENDER+ OF NIFTY 50 STOCKS

SCRIP NAME	OPEN	HIGH	LOW	CLOSE	PIVOT	R 1	R 2	S 1	S 2	TRENDER+	DAILY PROJECTED RANGE
ACC	1405	1423	1380	1406	1403	1426	1446	1384	1361	UP	1436 - 1393
AMBUJA CEMENT	221	238	221	227	229	236	246	219	212	UP	241 - 224
ASIAN PAINTS	875	893	864	887	881	899	910	870	852	Down	904 - 875
AXIS BANK	527	529	514	525	523	531	537	517	508	Down	527 - 513
BAJAJ AUTO	2475	2513	2379	2406	2433	2486	2566	2353	2299	UP	2460 - 2326
BHARTI AIRTEL	374	375	357	370	367	377	385	360	350	Down	372 - 355
BHEL	248	252	243	249	248	253	257	244	240	Down	255 - 246
BPCL	886	898	868	890	885	902	915	872	855	UP	909 - 879
CAIRN INDIA	140	143	137	142	140	144	146	138	135	Down	145 - 139
CIPLA	680	701	671	697	690	709	720	679	660	UP	714 - 684
COAL INDIA	348	353	346	349	349	353	357	345	342	Down	355 - 347
LUPIN	1889	1919	1853	1878	1883	1914	1950	1847	1817	UP	1899 - 1832
Dr.REDDY'S LABS	4313	4313	4211	4244	4256	4301	4358	4199	4154	UP	4279 - 4177
GAIL INDIA	315	319	306	311	312	318	325	305	298	Down	315 - 302
GRASIM INDS	3652	3668	3581	3625	3625	3669	3712	3581	3538	Down	3647 - 3559
HCL TECH	957	978	940	965	961	982	998	944	923	Down	990 - 952
HDFC	1238	1246	1214	1228	1229	1245	1261	1213	1197	Down	1237 - 1205
HDFC BANK	1064	1073	1051	1061	1062	1073	1084	1051	1040	Down	1067 - 1045
HERO MOTOCORP	2615	2658	2535	2555	2583	2630	2706	2507	2460	Down	2607 - 2484
HINDALCO	83	86	82	86	85	88	89	83	80	Down	88 - 84
HINDUSTAN UNILEVER	867	888	861	884	878	894	905	867	851	Flat	900 - 873
ICICI BANK	294	298	289	297	294	300	304	291	285	Down	302 - 293
IDEA	156	156	152	153	154	155	157	151	150	Down	154 - 150
IDFC	137	141	135	140	139	142	144	136	133	Down	143 - 137
INDUSIND BANK	915	925	893	905	908	922	939	891	876	Down	915 - 883
INFOSYS	1141	1161	1118	1150	1143	1168	1186	1125	1099	Down	1177 - 1134
ITC	329	331	323	331	328	334	338	325	320	UP	335 - 327
ULTRATECH CEMENT	3030	3072	2926	2973	2990	3055	3136	2908	2844	Down	3022 - 2876
TECH MAHINDRA	555	569	545	563	559	573	583	549	535	UP	578 - 554
KOTAK MAHINDRA BANK	690	700	680	688	689	699	709	679	669	Down	694 - 674
LARSEN & TOUBRO	1755	1760	1725	1740	1742	1758	1777	1723	1707	Down	1750 - 1715
MAHINDRA & MAHINDRA	1323	1335	1288	1322	1315	1342	1362	1295	1268	Down	1329 - 1282
MARUTI SUZUKI	4611	4614	4529	4567	4570	4611	4655	4526	4485	Down	4591 - 4506
NMDC	93	95	92	93	93	94	96	92	91	Down	94 - 92
NTPC	125	126	122	123	124	125	128	122	120	Down	125 - 121
ONGC	254	257	251	256	255	259	261	252	249	Down	260 - 254
POWERGRID	135	135	133	133	134	135	136	132	131	Down	134 - 132
PUNJAB NATIONAL BANK	155	161	153	159	158	163	166	154	149	Down	164 - 156
RELIANCE INDS	910	912	897	908	906	914	921	899	891	Down	910 - 895
ZEE ENTERTAINMENT ENTER	391	391	378	383	384	390	398	377	370	Down	387 - 374
SAIL	55	57	55	56	56	57	58	55	54	Down	57 - 55
SBI	262	269	256	268	264	272	277	260	252	Down	275 - 262
VEDANTA Ltd	97	97	93	95	95	97	99	93	91	Down	96 - 92
YES BANK	709	710	679	692	694	708	725	678	663	Down	701 - 670
SUNPHARMA	933	943	908	938	929	951	965	916	894	UP	958 - 923
TATA MOTORS	339	340	328	332	333	339	346	327	321	Down	336 - 324
TATA POWER	67	68	66	68	68	69	70	67	65	Flat	69 - 67
TATA STEEL	239	239	232	237	236	240	243	233	229	Down	238 - 231
TCS	2712	2730	2655	2676	2687	2719	2762	2644	2612	Down	2703 - 2628
WIPRO	575	577	564	576	572	581	586	567	559	Down	583 - 570



Monday, August 24, 2015

HOW TO TRADE USING THE TRENDER+

CLOSING PRICES

Closing price is the price at which scrip closes on the date mentioned in the report. Traders may initiate their intraday trade on this level. The stock or index should sustain above or below the pivot else you should exit the trade.

TREND

Trend is the level at which the tendency of stocks can be identified. For best results, you can use the 'trender' to trade. A 'weak' trend denoted by "DOWN" means that traders can trade with a negative bias. If the trend is 'strong', denoted by "UP", one can trade with a positive bias on the long side. Base price should be the pivot point price.

IF THE TREND IS UP

Ideally, for a buy position, buy at the pivot point and use S1 as the stop loss for a target of levels around R2 and higher.

IF THE TREND IS DOWN

Ideally, for a sell position, sell at the pivot point and use R1 as a stop loss and S2 or lower levels as a target level.

TRENDER + : This is a broad based technical trend of the stock prevailing, may or may not be necessarily for the day.

DAILY PROJECTED RANGE : Projected Daily high and low are indicative range for the day, if the price moves out of the range the trend in that side may accelerate and turn bullish or bearish.

THE TREND AND THE DAILY PROJECTED RANGE IS BASED ON CERTAIN SIMPLE CALCULATIONS WHICH IS PROVIDED BY BLOOMBERG, EXCLUSIVELY USED BY ANAND RATHI

Disclaimer- This report has been issued by Anand Rathi Share and Stock Brokers Limited (ARSSBL), which is regulated by SEBI. The information herein was obtained from various sources; we do not guarantee its accuracy or completeness. Neither the information nor any opinion expressed constitutes an offer, or an invitation to make an offer, to buy or sell any securities or any options, futures or other derivatives related to such securities ("related investments"). ARSSBL and its affiliates may trade for their own accounts as market maker / jobber and/or arbitrageur in any securities of this issuer(s) or in related investments, and may be on the opposite side of public orders. ARSSBL, its affiliates, directors, officers, and employees may have a long or short position in any securities of this issuer(s) or in related investments. ARSSBL or its affiliates may from time to time perform investment banking or other services for, or solicit investment banking or other business from, any entity mentioned in this report. This research report is prepared for private circulation. It does not have regard to the specific investment objectives, financial situation and the particular needs of any specific person who may receive this report. Investors should seek financial advice regarding the appropriateness of investing in any securities or investment strategies discussed or recommended in this report and should understand that statements regarding future prospects may not be realized. Investors should note that income from such securities, if any, may fluctuate and that each security's price or value may rise or fall. Past performance is not necessarily a guide to future performance. Foreign currency rates of exchange may adversely affect the value, price or income of any security or related investment mentioned in this report.

ANAND RATHI SHARE AND STOCK BROKERS LIMITED
4th Floor, Silver Metropolis, Jaicoach Compound Opposite Bimbisar Nagar, Goregaon (East), Mumbai - 400063.

Tel No: +91 22 4001 3700 | Fax No: +91 22 4001 3770 | Website: www.rathi.com