



### TECHNICALS

#### MARKET OUTLOOK

**NIFTY (8517)** CNX Nifty opened positive but failed to hold the higher levels and no major surprise from RBI's policy dragged the index towards the intraday low of 8448 levels. However, buying interest at lower levels supported the index to recoup the losses partially as it regained its 8500 levels in the last hour of trade. Finally, the volatile day ended with the loss of around 26 points. Now it has to hold above 8500 zones to witness buying interest towards 8550 and 8565 levels. While holding below 8480 may attract for a profit decline towards 8440 zones. Traders are required to remain cautious ahead of 1st quarterly result, Manufacturing PMI and Service PMI.

#### CNX NIFTY



#### COMMENTS

**SENSEX (28072)** BSE Sensex opened positive but fell down towards 27866 levels post RBI's declaration of keeping key rate unchanged. Although, it regained its psychological 28000 levels in the last hour of the day trade but still the session ended with the loss of around 115 points. Now, the index needs to cross and hold above 28150 levels for the bulls to take the index towards 28300 and 28500 levels. However if it fails to hold its psychological 28000 then bears may drag the index towards 27800 and 27500 levels.

#### S&P BSE-SENSEX



#### PIVOT TABLE

	NIFTY	SENSEX	BANK NIFTY	CNX IT
<b>HIGH</b>	8565	28265	19067	11489
<b>LOW</b>	8448	27866	18759	11379
<b>CLOSE</b>	8517	28072	18973	11416
<b>PIVOT</b>	<b>8510</b>	<b>28068</b>	<b>18933</b>	<b>11428</b>
<b>R 1</b>	8572	28269	19107	11477
<b>R 2</b>	8627	28466	19241	11538
<b>S 1</b>	8455	27870	18799	11367
<b>S 2</b>	8393	27669	18625	11318



Wednesday, August 05, 2015

### TECHNICAL CALLS

#### ESSEL PROPAC: Rs. 160.50

**EXECUTION PRICE RANGE**  
Buy Between Rs. 156 To Rs. 158

**STOP LOSS**  
152.00

**TARGET**  
167.00



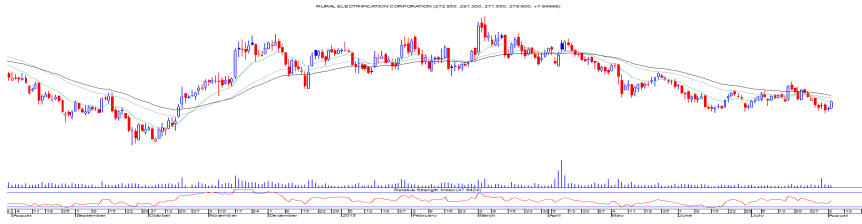
ESSEL PROPAC has registered fresh lifetime high of 162 and also gave highest daily close in its trading history. It has been making higher top - higher bottom formation on daily and weekly chart and holding above 160 may continue fresh round of rally towards 167 and 175 levels. We are recommending to buy the stock with the stop loss of 152 levels for the upside target of 167 levels.

#### RECLTD: Rs. 279

**EXECUTION PRICE RANGE**  
Buy Between Rs. 274 To Rs. 277

**STOP LOSS**  
269.00

**TARGET**  
288.00



RECLTD has taken multiple support near to 267-268 zone and also made a double bottom pattern on daily chart. It looks attractive in terms of risk reward ratio and also managed to cross and close above its immediate hurdle of 279 zones. We are recommending to buy the stock with the stop loss of 269 levels for the upside target of 288 levels.



Wednesday, August 05, 2015

INDIAN INDICES					
INDICES	CLOSE	CHANGE	% CHG		
SENSEX	28072	-115.13	-0.41		
NIFTY	8517	-26.15	-0.31		
TURNOVER & MARKET CAP					
Rs. (Cr.)	YEST'DAY	PREV.DAY	% CHG		
BSE Cash	3728	3928	-5.09		
NSE Cash	21976	19171	14.63		
Derivatives(bn)	1196	1663	-28.06		
INSTITUTIONAL ACTIVITIES					
DII Equity	-33	1021	-103.27		
FII Equity	350	-278	-226.15		
FII F&O	815	2994	-72.79		
ADVANCES & DECLINES					
EXCHANGE	ADV	DECLINES	TOTAL		
BSE	1626	1117	2743		
NSE	829	674	1503		
INDIAN ADR's					
ADR	CLOSE	PREV.CLOSE	% CHG		
Infosys	16.91	16.96	0.30		
HDFC Bank	62.47	62.97	0.80		
Wipro	12.36	12.27	-0.73		
ICICI Bank	10.07	10.38	3.08		
Sterlite Inds.	14.89	14.93	0.27		
Dr. Reddy's Lab	64.35	65.20	1.32		
SECTORAL INDICES					
BSE			NSE		
INDICES	CLOSE	%	INDICES	CLOSE	%
CNX Bank	18973	0.31	BSE MIDcap	11457	1.11
CNX IT	11416	-0.44	BSE SmallCap	12021	0.67
CNX Realty	176	-0.34	BSE 200	3602	0.10
CNX FMCG	20922	-0.33	OTHER IMP.DATA		
CNX Infra	3286	-0.38	10 Yr Gsec yield	7.84	
CNX Pharma	12362	-0.14	RS/\$	63.76	
BSE Auto	19440	1.00	\$ Index	97.31	
BSE Metal	8805	2.69	Brent Crude (\$)	50.32	
CNX MNC	10403	0.36	Gold (\$)	1093.13	
BSE 500	11286	0.15	Silver (\$)	14.58	
Nifty Midcap	3527	0.36	PE	CURRENT	AVG
BSE 100	8659	-0.08	NIFTY	21.9	19.7

TOP OUTPERFORMERS					
SENSEX			NIFTY		
SYMBOL	CLOSE	%	SYMBOL	CLOSE	%
Tata Steel	256.4	3.39	TECH MAHINDRA	542.1	3.52
Hindalco	109.3	3.36	TATA STEEL	256.3	3.37
Coal India	442.9	2.82	HINDALCO	109.3	3.36
SBI	288.2	2.54	BANK OF BAROD	191.1	3.35
Jindal Steel	77.8	2.30	ASIAN PAINT	905.7	3.21
TOP UNDERPERFORMERS					
SENSEX			NIFTY		
SYMBOL	CLOSE	%	SYMBOL	CLOSE	%
Hero Motocorp	2624.3	-2.73	IDEA	164.1	-3.92
ONGC	266.9	-2.40	ONGC	266.4	-2.67
Wipro	558.2	-2.16	GAIL	345.0	-2.61
JP Asso.	11.2	-2.10	INDUSIND	952.3	-2.21
Tata Motors	381.0	-1.85	INFY	1057.3	-2.01
BSE 500					
TOP OUTPERFORMERS			TOP UNDERPERFORMERS		
SYMBOL	CLOSE	%	SYMBOL	CLOSE	%
Shipra Medicare Ltd	1078.2	20.00	VST Industries Ltd	1623.8	-7.25
Rain Industries Ltd	48.8	14.44	Aarti Industries	389.5	-6.79
LA Opala RG Ltd	479.8	13.77	Sun TV Network L	352.8	-5.76
International Paper APPM Ltd	381.3	11.67	Claris Lifesciences	238.4	-4.75
Torrent Power Ltd	163.8	10.12	Sunteck Realty Ltd	261.2	-4.48
Force Motors Ltd	3141.9	10.00	Bajaj Hindusthan S	14.4	-4.13
Punj Lloyd Ltd	31.7	9.12	NESCO Ltd	1495.4	-3.85
FDC Ltd/India	182.4	8.70	Firstsource Solutic	31.3	-3.85
Astral Polytechnik Ltd	408.1	8.62	Vinati Organics Ltd	523.6	-3.84
Union Bank of India	201.5	8.16	Idea Cellular Ltd	164.5	-3.83
SML ISUZU Ltd	1534.0	7.97	Solar Industries In	3813.5	-3.79
Ceat Ltd	1000.4	7.91	TAKE Solutions Lt	140.2	-3.54
MRF Ltd	45668.8	7.35	Jubilant Life Scien	266.6	-3.42
Pidilite Industries Ltd	592.0	6.98	NIT Technologies	464.4	-3.38
WABCO India Ltd	6824.7	6.83	Godrej Consumer	1335.3	-3.19
Escorts Ltd	149.5	6.83	Hitachi Home & Li	1406.7	-3.04
Tata Coffee Ltd	93.9	6.83	TV Today Network	216.0	-2.92
Motherson Sumi Systems Ltd	374.1	6.76	KSK Energy Ventu	45.8	-2.86
Akzo Nobel India Ltd	1481.6	6.59	Caim India Ltd	166.3	-2.86
Himachal Futuristic Communications	16.0	6.59	Aarti Drugs Ltd	658.2	-2.85
National Aluminium Co Ltd	37.3	6.43	Hero MotoCorp Ltd	2624.3	-2.73
Bajaj Finserv Ltd	2026.7	6.34	Shree Renuka Sug	8.8	-2.65
Eveready Industries India Ltd	345.7	6.29	Dishman Pharmad	199.9	-2.63
ISGEC Heavy Engineering Ltd	6622.2	6.20	TV18 Broadcast L	36.3	-2.55
Canara Bank	309.4	6.10	GAIL India Ltd	345.1	-2.53



Wednesday, August 05, 2015

### TRENDER+ OF NIFTY 50 STOCKS

SCRIP NAME	OPEN	HIGH	LOW	CLOSE	PIVOT	R 1	R 2	S 1	S 2	TRENDER+	DAILY PROJECTED RANGE
ACC	1404	1404	1366	1377	1382	1399	1420	1361	1345	Down	1390 - 1353
AMBUJIA CEMENT	231	231	226	229	229	232	234	226	223	UP	230 - 225
ASIAN PAINTS	884	909	878	906	898	917	928	886	867	UP	923 - 892
AXIS BANK	579	584	572	580	579	586	592	573	566	UP	589 - 576
BAJAJ AUTO	2525	2525	2477	2512	2505	2532	2553	2484	2457	UP	2518 - 2471
BHARTI AIRTEL	423	426	409	413	416	423	433	406	399	UP	420 - 403
BHEL	284	286	278	282	282	285	289	278	275	Down	284 - 276
BPCL	918	937	914	934	928	942	951	920	906	UP	947 - 924
CAIRN INDIA	171	171	164	166	167	170	174	163	160	Down	169 - 162
CIPLA	718	718	703	710	710	717	725	703	695	UP	714 - 699
COAL INDIA	435	445	430	443	439	449	454	434	425	UP	451 - 437
LUPIN	1670	1675	1634	1641	1650	1666	1691	1625	1609	UP	1658 - 1617
Dr.REDDY'S LABS	4151	4195	4114	4162	4157	4200	4238	4119	4075	UP	4219 - 4138
GAIL INDIA	354	355	343	345	348	352	360	340	336	Down	350 - 338
GRASIM INDS	3740	3788	3714	3765	3756	3797	3829	3723	3682	UP	3813 - 3740
HCL TECH	943	950	930	933	938	945	958	925	918	Down	941 - 921
HDFC	1324	1331	1299	1302	1311	1323	1343	1291	1279	Down	1317 - 1285
HDFC BANK	1098	1103	1082	1086	1090	1099	1111	1078	1070	Down	1095 - 1074
HERO MOTOCORP	2790	2800	2614	2624	2679	2745	2866	2558	2493	Down	2712 - 2526
HINDALCO	106	110	106	109	108	111	113	106	103	UP	112 - 107
HINDUSTAN UNILEVER	911	914	900	908	908	915	922	901	893	Down	911 - 897
ICICI BANK	314	315	307	314	312	317	320	309	304	UP	319 - 311
IDEA	171	172	163	164	166	170	175	161	158	Down	168 - 159
IDFC	150	151	148	148	149	150	152	147	146	Down	150 - 147
INDUSIND BANK	973	974	940	952	955	971	989	937	922	Down	963 - 929
INFOSYS	1078	1080	1051	1057	1063	1075	1092	1046	1034	Down	1069 - 1040
ITC	331	332	324	330	329	333	336	326	321	UP	331 - 324
ULTRATECH CEMENT	3190	3190	3104	3145	3146	3189	3232	3103	3060	Down	3168 - 3081
TECH MAHINDRA	525	549	524	542	538	553	563	528	514	UP	558 - 533
KOTAK MAHINDRA BANK	694	699	680	691	690	700	709	681	671	Down	695 - 676
LARSEN & TOUBRO	1780	1795	1759	1775	1776	1794	1812	1757	1740	Down	1785 - 1749
MAHINDRA & MAHINDRA	1341	1370	1337	1364	1357	1377	1390	1344	1324	UP	1384 - 1351
MARUTI SUZUKI	4449	4454	4411	4439	4435	4458	4477	4416	4392	UP	4446 - 4404
NMDC	101	103	101	102	102	103	104	101	100	Down	103 - 101
NTPC	135	136	134	135	135	136	137	134	133	Down	136 - 134
ONGC	274	274	265	266	268	272	278	263	259	Down	270 - 261
POWERGRID	141	143	140	141	141	142	144	140	139	Down	143 - 140
PUNJAB NATIONAL BANK	156	161	153	159	158	162	165	155	150	UP	164 - 156
RELIANCE INDS	1003	1006	980	988	991	1002	1017	977	966	Down	997 - 971
ZEE ENTERTAINMENT ENTERP	403	405	395	403	401	407	411	397	391	UP	409 - 399
SAIL	57	60	56	59	58	61	62	57	54	UP	62 - 58
SBI	283	290	276	289	285	294	299	280	271	UP	296 - 283
VEDANTA Ltd	127	128	124	127	127	129	131	125	122	Down	130 - 126
YES BANK	832	844	825	842	837	848	855	830	818	UP	852 - 833
SUNPHARMA	835	835	820	830	828	837	843	822	814	Flat	832 - 818
TATA MOTORS	386	390	378	381	383	388	395	376	371	Down	385 - 373
TATA POWER	70	70	69	70	70	71	71	69	68	Flat	71 - 69
TATA STEEL	250	260	246	256	254	262	268	248	240	Flat	265 - 251
TCS	2510	2523	2486	2509	2506	2526	2543	2489	2469	Flat	2516 - 2479
WIPRO	571	571	558	560	563	568	576	555	549	Down	565 - 552



Wednesday, August 05, 2015

## HOW TO TRADE USING THE TRENDER+

## CLOSING PRICES

Closing price is the price at which scrip closes on the date mentioned in the report. Traders may initiate their intraday trade on this level. The stock or index should sustain above or below the pivot else you should exit the trade.

## TREND

Trend is the level at which the tendency of stocks can be identified. For best results, you can use the 'trender' to trade. A 'weak' trend denoted by "DOWN" means that traders can trade with a negative bias. If the trend is 'strong', denoted by "UP", one can trade with a positive bias on the long side. Base price should be the pivot point price.

## IF THE TREND IS UP

Ideally, for a buy position, buy at the pivot point and use S1 as the stop loss for a target of levels around R2 and higher.

## IF THE TREND IS DOWN

Ideally, for a sell position, sell at the pivot point and use R1 as a stop loss and S2 or lower levels as a target level.

**TRENDER +** : This is a broad based technical trend of the stock prevalent, may or may not be necessarily for the day.

**DAILY PROJECTED RANGE** : Projected Daily high and low are indicative range for the day, if the price moves out of the range the trend in that side may accelerate and turn bullish or bearish.

THE TREND AND THE DAILY PROJECTED RANGE IS BASED ON CERTAIN SIMPLE CALCULATIONS WHICH IS PROVIDED BY BLOOMBERG, EXCLUSIVELY USED BY ANAND RATHI

**Disclaimer**-This report has been issued by Anand Rathi Share and Stock Brokers Limited (ARSSBL), which is regulated by SEBI. The information herein was obtained from various sources; we do not guarantee its accuracy or completeness. Neither the information nor any opinion expressed constitutes an offer, or an invitation to make an offer, to buy or sell any securities or any options, futures or other derivatives related to such securities ("related investments"). ARSSBL and its affiliates may trade for their own accounts as market maker / jobber and/or arbitrageur in any securities of this issuer(s) or in related investments, and may be on the opposite side of public orders. ARSSBL, its affiliates, directors, officers, and employees may have a long or short position in any securities of this issuer(s) or in related investments. ARSSBL or its affiliates may from time to time perform investment banking or other services for, or solicit investment banking or other business from, any entity mentioned in this report. This research report is prepared for private circulation. It does not have regard to the specific investment objectives, financial situation and the particular needs of any specific person who may receive this report. Investors should seek financial advice regarding the appropriateness of investing in any securities or investment strategies discussed or recommended in this report and should understand that statements regarding future prospects may not be realized. Investors should note that income from such securities, if any, may fluctuate and that each security's price or value may rise or fall. Past performance is not necessarily a guide to future performance. Foreign currency rates of exchange may adversely affect the value, price or income of any security or related investment mentioned in this report.

ANAND RATHI SHARE AND STOCK BROKERS LIMITED

4 th Floor , Silver Metropolis, Jaicoach Compound Opposite Bimbisar Nagar, Goregaon(East), Mumbai - 400063.

Tel No: +91 22 4001 3700 | Fax No: +91 22 4001 3770 | Website: www.rathi.com