



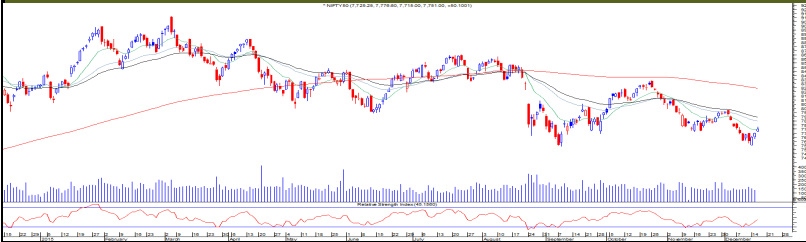
Thursday, December 17, 2015

### TECHNICALS

#### MARKET OUTLOOK

**NIFTY (7751)** : Nifty 50 has continued its positive move of last two trading sessions and closed with the gain of 50 points at 7750 levels. It has recently taken support near to 7550 zones after a fall of 428 points in last two weeks. It has also given a positive divergence on Technical indicators that also is a reason of a bounce back from lower levels led by support based buying in the market. It has negated its negative formation of lower top – lower bottom and has the potential to extend the bounce back move towards 61.80% retracement which comes at 7800-7820 zones. Now it has to continue to hold above 7700 zone to witness an up move towards 7820 then 7850 levels while if fails to hold 7700 zone then bounce back may fizzle out and index may go down towards next support of 7650 and 7600 zones.

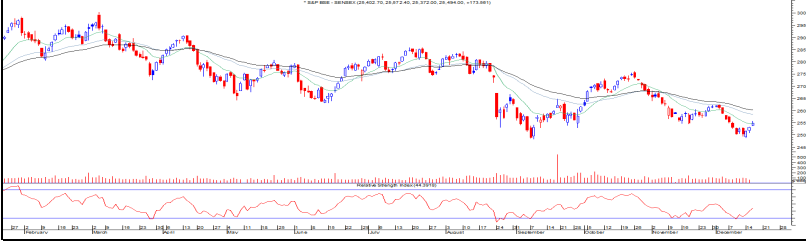
NIFTY 50



COMMENTS

**SENSEX (25494)** : BSE SENSEX extended its positive move for third consecutive sessions as it has been respecting to psychological 25000 zones on a closing basis. It has negated its negative trend and started to witness higher high – higher low from last two sessions. Now till it holds above 25316 zones, buying interest may continue towards 25750 zones. On the downside if it fails to hold 25250 levels then selling pressure may again drag the index towards 25000 and 24850 levels.

S&P BSE~SENSEX



PIVOT TABLE

	NIFTY	SENSEX	BANK NIFTY	CNX IT
HIGH	7777	25573	16640	11188
LOW	7716	25372	16364	11082
CLOSE	7751	25494	16579	11145
PIVOT	7748	25480	16528	11138
R 1	7780	25587	16692	11195
R 2	7809	25680	16804	11244
S 1	7719	25387	16415	11088
S 2	7687	25279	16251	11032



Thursday, December 17, 2015

### TECHNICAL CALLS

#### TCS: Rs 2408.40

##### EXECUTION PRICE RANGE

Buy Between Rs. 2368 To Rs. 2392

##### STOP LOSS

2330.00

##### TARGET

2480.00



TCS has recently made a Bullish Engulfing pattern on weekly chart and turned from extremely oversold price territory. It has been holding the gains and managed to surpass immediate hurdle of 2390 levels. It looks attractive for a short term bounce back move after the weakness of last 10 weeks. We are suggesting to buy with strict stop loss of 2330 levels for an upside target of 2480 levels.

#### LICHSGFIN: Rs 479

##### EXECUTION PRICE RANGE

Buy Between Rs. 470 To Rs. 475

##### STOP LOSS

464.00

##### TARGET

490.00



LICHSGFIN is in process to complete a Morning Star price pattern with a Doji candle on weekly chart. It has recently taken support near to 450-452 zones and has been making higher highs – higher lows from last four trading sessions. It has given the highest daily close in last ten trading sessions and respecting to its 50 DMA which also indicates an inherit strength in the counter. One can buy the stock on small decline with stop loss of 464 for the upside target of 490 levels.



Thursday, December 17, 2015

INDIAN INDICES					
INDICES	CLOSE	CHANGE	% CHG		
SENSEX	25494	173.93	0.69		
NIFTY	7751	50.00	0.65		
TURNOVER & MARKET CAP					
Rs. (Cr.)	YEST.DAY	PREV.DAY	% CHG		
BSE Cash	2578	2425	6.30		
NSE Cash	15032	13852	8.52		
Derivatives(bn)	1525	1975	-22.78		
INSTITUTIONAL ACTIVITIES					
DII Equity	274	386	-29.12		
FII Equity	49	-157	-130.99		
FII F&O	-1744	1517	-214.95		
ADVANCES & DECLINES					
EXCHANGE	ADV	DECLINES	TOTAL		
BSE	1444	1046	2490		
NSE	829	709	1538		
INDIAN ADR's					
ADR	CLOSE	PREV.CLOSE	% CHG		
Infosys	16.52	16.79	1.63		
HDFC Bank	57.34	58.51	2.04		
Wipro	11.88	12.01	1.09		
ICICI Bank	7.22	7.27	0.69		
Sterite Inds.	16.28	16.85	3.50		
Dr. Reddy's Lab	44.28	44.50	0.50		
SECTORAL INDICES					
BSE			NSE		
INDICES	CLOSE	%	INDICES	CLOSE	%
CNX Bank	16579	1.10	BSE MIDcap	10743	0.35
CNX IT	11145	0.78	BSE SmallCap	11363	0.24
CNX Realty	165	1.13	BSE 200	3286	0.63
CNX FMCG	19791	-0.76	OTHER IMP.DATA		
CNX Infra	2649	1.22	10 Yr Gsec yield	7.75	
CNX Pharma	11638	0.72	RS/\$	66.77	
BSE Auto	18036	-0.51	\$ Index	98.25	
BSE Metal	7074	0.30	Brent Crude (\$)	37.37	
CNX MNC	9473	-0.29	Gold (\$)	1065.12	
BSE 500	10334	0.57	Silver (\$)	13.84	
Nifty Midcap	3258	-0.29	PE	CURRENT	AVG
BSE 100	7886	0.69	NIFTY	20.2	19.7

TOP OUTPERFORMERS					
SENSEX			NIFTY		
SYMBOL	CLOSE	%	SYMBOL	CLOSE	%
DLF	113.0	4.20	ONGC	226.7	4.06
JP Asso.	11.1	4.05	CAIRN	131.3	3.71
ONGC	226.6	3.99	BHARTI	320.4	3.61
Bharti Airtel	320.2	3.83	POWERGRID	133.4	2.97
ICICI Bank	252.0	2.29	IDEA	135.0	2.31
TOP UNDERPERFORMERS					
SENSEX			NIFTY		
SYMBOL	CLOSE	%	SYMBOL	CLOSE	%
M&M	1218.9	-5.44	M&M	1218.1	-5.51
ITC	319.5	-0.96	WIPRO	555.0	-0.71
Jindal Steel	89.8	-0.94	PNB	120.9	-0.58
Wipro	555.0	-0.64	HINDALCO	78.6	-0.57
Hindalco	78.6	-0.32	ULTRATECHCN	2847.8	-0.54
BSE 500					
TOP OUTPERFORMERS			TOP UNDERPERFORMERS		
SYMBOL	CLOSE	%	SYMBOL	CLOSE	%
Pipavav Defence & Offshore Engine	76.5	16.70	CCL International	27.6	-80.00
Praj Industries Ltd	92.9	14.56	Rashtriya Chemic	48.3	-8.01
PMC FinCorp Ltd	0.8	8.70	Mahindra & Mahir	1218.9	-5.44
Indraprastha Gas Ltd	500.4	6.79	Opto Circuits Indi	11.1	-3.74
Rallis India Ltd	175.0	6.13	Force Motors Ltd	3033.5	-3.05
Bhushan Steel Ltd	44.7	5.93	CESC Ltd	502.4	-3.00
Kitex Garments Ltd	680.0	5.48	IIFL Holdings Ltd	204.9	-2.91
DLF Ltd	113.0	4.20	Allcargo Logistics	347.1	-2.83
Capital First Ltd	399.1	4.18	Sadbhav Enginee	323.9	-2.82
Jaiprakash Associates Ltd	11.1	4.05	MOIL Ltd	210.4	-2.82
Oil & Natural Gas Corp Ltd	226.6	3.99	Star Ferro and Ce	133.2	-2.77
GIC Housing Finance Ltd	206.7	3.97	Fortis Healthcare	170.9	-2.68
Bharti Airtel Ltd	320.2	3.83	Jaypee Infratech	11.9	-2.53
PC Jeweller Ltd	405.0	3.81	Gateway Distripa	312.3	-2.51
Religare Enterprises Ltd	319.2	3.81	Titan Co Ltd	354.6	-2.42
Vardhman Textiles Ltd	799.8	3.70	Shilpa Medicare L	465.7	-2.40
Cairn India Ltd	131.1	3.47	KPIT Technologis	169.5	-2.39
PVR Ltd	810.9	3.44	Kansai Nerolac P	250.3	-2.28
IVRCL Ltd	9.1	3.42	Shoppers Stop Lt	367.5	-2.26
JSW Energy Ltd	78.8	3.41	Bajaj Hindusthan	17.6	-2.22
Century Textiles & Industries Ltd	562.6	3.25	Mahanagar Telep	22.2	-2.20
Reliance Infrastructure Ltd	436.9	3.23	JK Cement Ltd	642.1	-2.10
Oil India Ltd	376.3	3.15	IFB Industries Ltd	404.0	-2.06
Finolex Cables Ltd	260.6	3.02	Britannia Industri	2813.7	-2.03
eClerx Services Ltd	1864.2	2.94	Gold Line Interna	132.8	-1.99



Thursday, December 17, 2015

## TRENDER+ OF NIFTY 50 STOCKS

SCRIP NAME	OPEN	HIGH	LOW	CLOSE	PIVOT	R 1	R 2	S 1	S 2	TRENDER+	DAILY PROJECTED RANGE
ACC	1350	1355	1338	1349	1347	1357	1364	1340	1330	UP	1352 - 1335
AMBUJA CEMENT	194	195	192	194	194	196	197	193	191	UP	196 - 193
ASIAN PAINTS	880	884	859	867	870	881	895	856	845	Down	875 - 850
AXIS BANK	437	442	434	438	438	442	446	434	430	Down	444 - 436
BAJAJ AUTO	2462	2466	2430	2453	2450	2469	2485	2433	2414	UP	2459 - 2423
BHARTI AIRTEL	311	322	310	320	317	325	330	313	305	Down	327 - 315
BHEL	168	170	167	168	168	170	172	167	165	Down	171 - 168
BPCL	900	917	900	904	907	914	924	897	890	UP	919 - 902
CAIRN INDIA	128	133	128	131	131	134	136	128	125	Down	135 - 130
CIPLA	643	644	637	639	640	643	647	636	633	UP	641 - 634
COAL INDIA	317	319	312	317	316	320	323	313	309	Flat	318 - 311
LUPIN	1801	1835	1794	1829	1819	1845	1860	1804	1778	UP	1852 - 1811
Dr.REDDY'S LABS	3007	3043	2995	3005	3014	3033	3062	2985	2966	UP	3024 - 2976
GAIL INDIA	341	360	340	344	348	356	368	336	328	Down	362 - 342
GRASIM INDS	3692	3730	3688	3725	3714	3740	3756	3699	3673	UP	3748 - 3706
HCL TECH	849	860	843	847	850	857	867	840	833	Flat	853 - 836
HDFC	1211	1223	1209	1219	1217	1225	1231	1211	1204	UP	1228 - 1214
HDFC BANK	1063	1073	1059	1067	1074	1081	1081	1060	1053	UP	1077 - 1063
HERO MOTOCORP	2570	2616	2570	2595	2594	2618	2640	2572	2548	Flat	2629 - 2563
HINDALCO	79	80	78	79	79	80	81	78	77	UP	79 - 77
HINDUSTAN UNILEVER	865	868	852	855	858	865	875	849	842	UP	862 - 845
ICICI BANK	247	254	244	252	250	256	260	246	240	Flat	258 - 248
IDEA	133	137	132	135	134	137	139	132	130	Flat	138 - 133
IDFC	46	47	45	46	46	47	48	45	45	Flat	47 - 45
INDUSIND BANK	921	941	919	933	931	943	953	921	909	UP	948 - 926
INFOSYS	1083	1098	1080	1096	1091	1103	1109	1085	1073	UP	1106 - 1088
ITC	323	325	318	319	321	323	327	317	314	Down	322 - 315
ULTRATECH CEMENT	2886	2892	2825	2848	2855	2885	2922	2818	2788	UP	2870 - 2803
TECH MAHINDRA	523	531	520	523	525	530	536	519	514	Down	533 - 522
KOTAK MAHINDRA BANK	690	697	684	695	692	700	705	687	679	UP	702 - 689
LARSEN & TOUBRO	1291	1299	1276	1281	1285	1295	1308	1272	1262	Down	1290 - 1267
MAHINDRA & MAHINDRA	1255	1265	1209	1218	1231	1253	1287	1196	1174	Down	1242 - 1185
MARUTI SUZUKI	4655	4657	4603	4619	4627	4650	4681	4596	4572	UP	4638 - 4584
ADSEZ	254	255	249	252	252	254	257	249	246	Flat	253 - 248
NTPC	132	135	132	134	133	135	137	132	130	UP	136 - 133
ONGC	220	228	217	227	224	230	234	220	214	Flat	232 - 222
POWERGRID	130	134	130	133	132	135	137	131	128	UP	136 - 132
PUNJAB NATIONAL BANK	122	123	120	121	121	123	124	120	118	Down	122 - 119
RELIANCE INDS	976	988	973	979	980	986	994	972	966	UP	990 - 976
ZEE ENTERTAINMENT ENTER	410	412	406	409	409	412	415	406	403	UP	410 - 405
SAIL	45	46	45	45	45	46	46	45	44	Flat	46 - 45
SBI	228	230	225	227	227	230	232	225	223	Down	228 - 224
VEDANTA Ltd	85	85	84	84	84	85	86	83	82	Flat	85 - 83
YES BANK	697	711	694	699	701	708	718	691	684	Flat	713 - 696
SUNPHARMA	780	786	776	784	782	788	792	778	772	UP	790 - 780
TATA MOTORS	376	385	373	380	379	386	392	374	367	Flat	389 - 377
TATA POWER	62	63	61	62	62	63	64	61	60	Flat	64 - 62
TATA STEEL	247	249	242	245	245	248	252	242	239	UP	247 - 240
TCS	2384	2415	2384	2408	2402	2421	2433	2390	2372	UP	2427 - 2396
WIPRO	552	559	552	555	555	559	562	552	549	Down	561 - 554



## HOW TO TRADE USING THE TRENDER+

## CLOSING PRICES

Closing price is the price at which scrip closes on the date mentioned in the report. Traders may initiate their intraday trade on this level. The stock or index should sustain above or below the pivot else you should exit the trade.

## TREND

Trend is the level at which the tendency of stocks can be identified. For best results, you can use the 'trender' to trade. A 'weak' trend denoted by "DOWN" means that traders can trade with a negative bias. If the trend is 'strong', denoted by "UP", one can trade with a positive bias on the long side. Base price should be the pivot point price.

## IF THE TREND IS UP

Ideally, for a buy position, buy at the pivot point and use S1 as the stop loss for a target of levels around R2 and higher.

## IF THE TREND IS DOWN

Ideally, for a sell position, sell at the pivot point and use R1 as a stop loss and S2 or lower levels as a target level.

TRENDER + : This is a broad based technical trend of the stock prevalent, may or may not be necessarily for the day.

DAILY PROJECTED RANGE : Projected Daily high and low are indicative range for the day, if the price moves out of the range the trend in that side may accelerate and turn bullish or bearish.

THE TREND AND THE DAILY PROJECTED RANGE IS BASED ON CERTAIN SIMPLE CALCULATIONS WHICH IS PROVIDED BY BLOOMBERG, EXCLUSIVELY USED BY ANAND RATHI

**Disclaimer-** This report has been issued by Anand Rathi Share and Stock Brokers Limited (ARSSBL), which is regulated by SEBI. The information herein was obtained from various sources; we do not guarantee its accuracy or completeness. Neither the information nor any opinion expressed constitutes an offer, or an invitation to make an offer, to buy or sell any securities or any options, futures or other derivatives related to such securities ("related investments"). ARSSBL and its affiliates may trade for their own accounts as market maker / jobber and/or arbitrageur in any securities of this issuer(s) or in related investments, and may be on the opposite side of public orders. ARSSBL, its affiliates, directors, officers, and employees may have a long or short position in any securities of this issuer(s) or in related investments. ARSSBL or its affiliates may from time to time perform investment banking or other services for, or solicit investment banking or other business from, any entity mentioned in this report. This research report is prepared for private circulation. It does not have regard to the specific investment objectives, financial situation and the particular needs of any specific person who may receive this report. Investors should seek financial advice regarding the appropriateness of investing in any securities or investment strategies discussed or recommended in this report and should understand that statements regarding future prospects may not be realized. Investors should note that income from such securities, if any, may fluctuate and that each security's price or value may rise or fall. Past performance is not necessarily a guide to future performance. Foreign currency rates of exchange may adversely affect the value, price or income of any security or related investment mentioned in this report.

ANAND RATHI SHARE AND STOCK BROKERS LIMITED  
4th Floor, Silver Metropolis, Jaicoach Compound Opposite Bimbisar Nagar, Goregaon(East), Mumbai - 400063.

Tel No: +91 22 4001 3700 | Fax No: +91 22 4001 3770 | Website: www.rathi.com