

MCX COPPER JUNE



Technical Outlook

In line with expectation the copper prices surged higher by breaching the immediate resistance of 365 and ended at 369.50. Ahead the prices are likely to continue till the trend line resistance of 375 then 377 levels. For the day we recommend buying on dips around 367 for targets of 371 and higher.

Action	Entry	Target	Stop
BUY	At 367	375/377	362

MCX SILVER JULY



Technical Outlook

On Friday the silver prices traded marginally higher and ended 39135. Prices are trading along with the trend line supports and the immediate support of the same is at 38940 and on higher side resistance is at 39800 then 40200. For the day, we advise buying around 39000 for targets of 39800 then 40000.

Action	Entry	Target	Stop
BUY	At 39000	39800/40000	38600

NCDEX GUAR GUM JUNE

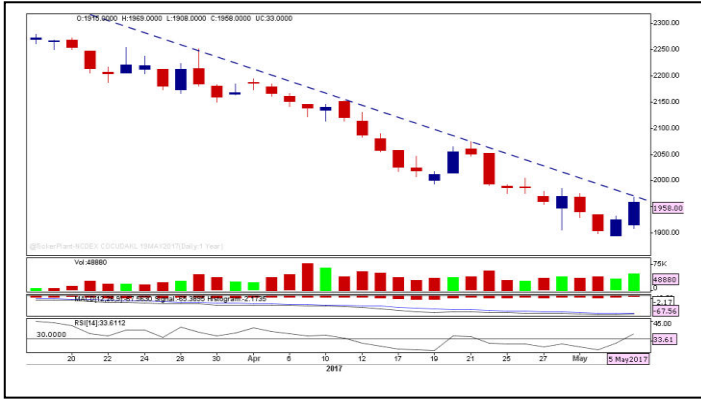


Technical Outlook

After last few sessions of consolidating the Guar gum prices slowly inched higher by breaching the wedge pattern resistance and ended above that. Now going forward, the prices are likely to trade higher in coming sessions and recommend buying at 7800 for targets of 8130 levels.

Action	Entry	Target	Stop
BUY	At 7800	8130	7650

NCDEX SOY OIL JUNE



Technical Outlook

On Friday, the soy oil prices breached the neckline resistance of Inverted head and shoulder pattern and settled above that. According to the pattern the upside targets are projected till 655. However, for the day we could prices inching higher till 642 and recommend buying around 633.

Action	Entry	Target	Stop
BUY	At 633	642	627

TIME(IST)	COUNTRY	DATA & EVENTS	ACTUAL	FORECAST	PREVIOUS
-	-	-	-	-	-
-	-	-	-	-	-
-	-	-	-	-	-
-	-	-	-	-	-
-	-	-	-	-	-
-	-	-	-	-	-

DAILY PIVOT LEVELS

Symbol	Expiry	LTP	S2	S1	Pivot	R1	R2
GOLD	05 JUN 2017	28635.0	28395.0	28515.0	28650.0	28770.0	28905.0
SILVER	05 JUL 2017	39111.0	38631.0	38871.0	39048.0	39288.0	39465.0
CRUDEOIL	19 JUN 2017	3277.0	3228.3	3252.7	3272.3	3296.7	3316.3
NATURALGAS	25 MAY 2017	210.6	204.1	207.3	209.5	212.7	214.9
COPPER	30 JUN 2017	369.6	362.3	365.9	368.1	371.7	373.8
NICKEL	31 MAY 2017	602.5	584.0	593.2	600.6	609.8	617.2
ALUMINIUM	31 MAY 2017	125.4	123.7	124.5	125.2	126.0	126.7
LEAD	31 MAY 2017	135.7	132.2	134.0	135.6	137.3	138.9
ZINC	31 MAY 2017	169.8	161.4	165.6	168.0	172.2	174.5
CPO	31 MAY 2017	519.9	508.8	514.3	517.3	522.8	525.8
MENTHAOIL	31 MAY 2017	940.4	924.9	932.6	946.1	953.8	967.3
COTTON	31 MAY 2017	20940.0	20740.0	20840.0	21000.0	21100.0	21260.0
COCUDAKL	20 JUN 2017	1959.0	1917.7	1938.3	1956.7	1977.3	1995.7
GUARGUM5	20 JUN 2017	7888.0	7701.3	7794.7	7889.3	7982.7	8077.3
GUARSEED10	20 JUN 2017	3672.0	3591.3	3631.7	3670.3	3710.7	3749.3
RMSEED	20 JUN 2017	3682.0	3654.7	3668.3	3685.7	3699.3	3716.7
CASTOR	20 JUN 2017	4569.0	4493.0	4531.0	4593.0	4631.0	4693.0
SYBEANIDR	20 JUN 2017	2835.0	2776.3	2805.7	2830.3	2859.7	2884.3
SYOREF	20 JUN 2017	635.5	627.1	631.3	633.9	638.1	640.8
JEERAUNJHA	20 JUN 2017	18265.0	17841.7	18053.3	18211.7	18423.3	18581.7
TMCFGRNZM	20 JUN 2017	5602.0	5528.7	5565.3	5602.7	5639.3	5676.7

TEAM

ANALYST	DESIGNATION	EMAIL	TELEPHONE
Aditya Agarwal	Head – Technical Research	aditya@way2wealth.com	+9122-61462955
Harish Jujarey	Sr. Technical Analyst – Commodity	harishjujarey@way2wealth.com	+9122-61462952
Mohit Agarwal	Technical Analyst – Forex & Commodity	mohitk@way2wealth.com	+9122-61462954
Monil Shah, CMT	Technical Analyst – Equity & Forex	monilshah@way2wealth.com	+9122-61462980

Disclaimer

Analyst Certification: I, Harish Jujarey, the research analyst and author of this report, hereby certify that the views expressed in this research report accurately reflect our personal views about the subject securities, issuers, products, sectors or industries. It is also certified that no part of the compensation of the analyst(s) was, is, or will be directly or indirectly related to the inclusion of specific recommendations or views in this research. The analyst(s), principally responsible for the preparation of this research report, receives compensation based on overall revenues of the company (Way2Wealth Brokers Private Limited, hereinafter referred to as Way2Wealth) and has taken reasonable care to achieve and maintain independence and objectivity in making any recommendations.

It is confirmed that Mohit Agarwal, the author of this report has not received any compensation from the companies mentioned in the report in the preceding 12 months. Our research professionals are paid in part based on the profitability of Way2Wealth, which include earnings from other business. Neither Way2Wealth nor its directors, employees, agents or representatives shall be liable for any damages whether direct or indirect, incidental, special or consequential including lost revenue or lost profits that may arise from or in connection with the use of the information contained in this report.

This report is for the personal information of the authorized recipient and does not construe to be any investment, legal or taxation advice to you. Way2Wealth is not soliciting any action based upon it. Nothing in this research shall be construed as a solicitation to buy or sell any security or product, or to engage in or refrain from engaging in any such transaction. The contents of this material are general and are neither comprehensive nor appropriate for every individual and are solely for the informational purposes of the readers. This material does not take into account the specific objectives, financial situation or needs of an individual/s or a Corporate/s or any entity/s.

This research has been prepared for the general use of the clients of the Way2Wealth and must not be copied, either in whole or in part, or distributed or redistributed to any other person in any form. If you are not the intended recipient you must not use or disclose the information in this research in any way. Though disseminated to all the customers simultaneously, not all customers may receive this report at the same time. Way2Wealth will not treat recipients as customers by virtue of their receiving this report. The distribution of this document in other jurisdictions may be restricted by the law applicable in the relevant jurisdictions and persons into whose possession this document comes should inform themselves about, and observe any such restrictions.

The report is based upon information obtained from sources believed to be reliable, but we do not make any representation or warranty that it is accurate, complete or up to date and it should not be relied upon as such. Way2Wealth or any of its affiliates or employees makes no warranties, either express or implied of any kind regarding any matter pertaining to this report, including, but not limited to warranties of suitability, fitness for a particular purpose, accuracy, timeliness, completeness or non-infringement. We accept no obligation to correct or update the information or opinions in it. Way2Wealth or any of its affiliates or employees shall not be in any way responsible for any loss or damage that may arise to any person from any inadvertent error in the information contained in this report. The recipients of this report should rely on their own investigations. In no event shall Way2Wealth be liable for any damages of any kind, including, but not limited to, indirect, special, incidental, consequential, punitive, lost profits, or lost opportunity, whether or not Way2Wealth has advised of the possibility of such damages.

This material contains statements that are forward-looking; such statements are based upon the current beliefs and expectations and are subject to significant risks and uncertainties. Actual results may differ from those set forth in the forward-looking statements. These uncertainties include but are not limited to: the risk of adverse movements or volatility in the securities markets or in interest or foreign exchange rates or indices; adverse impact from an economic slowdown; downturn in domestic or foreign securities and trading conditions or markets; increased competition; unfavourable political and diplomatic developments; change in the governmental or regulatory policies; failure of a corporate event and such others. This is not an offer to buy or sell or a solicitation of an offer to buy or sell any security or instrument or to participate in any particular trading strategy. No part of this material may be copied or duplicated in any form by any means or redistributed without the written consent of Way2Wealth. In no event shall any reader publish, retransmit, redistribute or otherwise reproduce any information provided by Way2Wealth in any format to anyone. Way2Wealth and its affiliates, officers, directors and employees including persons involved in the preparation or issuance of this report may from time to time have interest in securities / positions, financial or otherwise in the securities related to the information contained in this report.