



### DERIVATIVES

#### Market Statistics

Product	No. of Contracts	Turnover (Rs.cr)
Index Futures	1,74,175	15,248.85
Stock Futures	6,15,947	45,858.76
Index Options	48,49,601	4,60,035.09
Stock Options	4,02,623	30,088.92
<b>F&amp;O Total</b>	<b>60,42,346</b>	<b>5,51,231.62</b>

#### FII Derivatives Statistics

	OI at end of the day		Inflow /		
	Buy	Sell	Contract	Amount	Outflow
Index futures	935.64	1995.84	251359	19511.79	-1060.19
Index options	48132.76	48635.56	889977	68577.26	-502.79
Stock futures	6891.03	6932.84	788062	55563.73	-41.81
Stock options	6044.23	5990.77	76486	5806.27	53.45
<b>Net Inflow/Outflow (Cr)</b>					<b>-1551.34</b>

#### Securities in Ban Period

JPASSOCIAT, JSWENERGY, WOCKPHARMA AND IBREALEST

#### Nifty Future/Option Trading Guide

NIFTY	Short term	Medium term
<b>Support</b>	<b>9830</b>	<b>9450</b>
<b>Resistance</b>	<b>10150</b>	<b>10150</b>

#### Nifty View for the Day

Now on the downside, the index has supports at 10000-9990 levels while on the upside resistance is around 10150 zones.

#### Quote for the Day

"LIFE IS EITHER DARING ADVENTURE OR NOTHING."

#### Activity Tracking

Stocks (Long Position)	Remarks
Cumminsind, Ceattd, Titan Balramchini, NIITTECH, MRF Ramcocem, Voltas, ACC	Suggesting strength in these counter
Stocks (Short Covering)	Remarks
Heromotoco, Petronet, Lupin IndianB, Bergepaint, Jindalstel PCjeweller, Suntv, lbrealst	Suggesting strength in these counter
Stocks (Short Position)	Remarks
Infibeam, Godrejcp, Unionbank Infratel, Wockpharma, BHEL Chennpetro, Drreddy, RDEL	Suggesting weakness in these counter
Stocks (Long Liquidation)	Remarks
Escorts. Jpassociat, M&MFin Kajariacer, Bharatfin, Siemens Powergrid, Vguard, Infy	Suggesting weakness in these counter

#### Activity in F&O

Nifty future closed on a negative note at 10101.10 levels. Nifty future open interest increased by 5.49% with fall in price by 0.37%. It closed at a premium of 20 point as compared to premium of 24 points of previous trading session. Market witnessed selling pressure across the board. The market turnover increased by 54.25% in terms of number of contracts traded vis-à-vis previous trading day and in terms of rupees it increased by 61.51%.

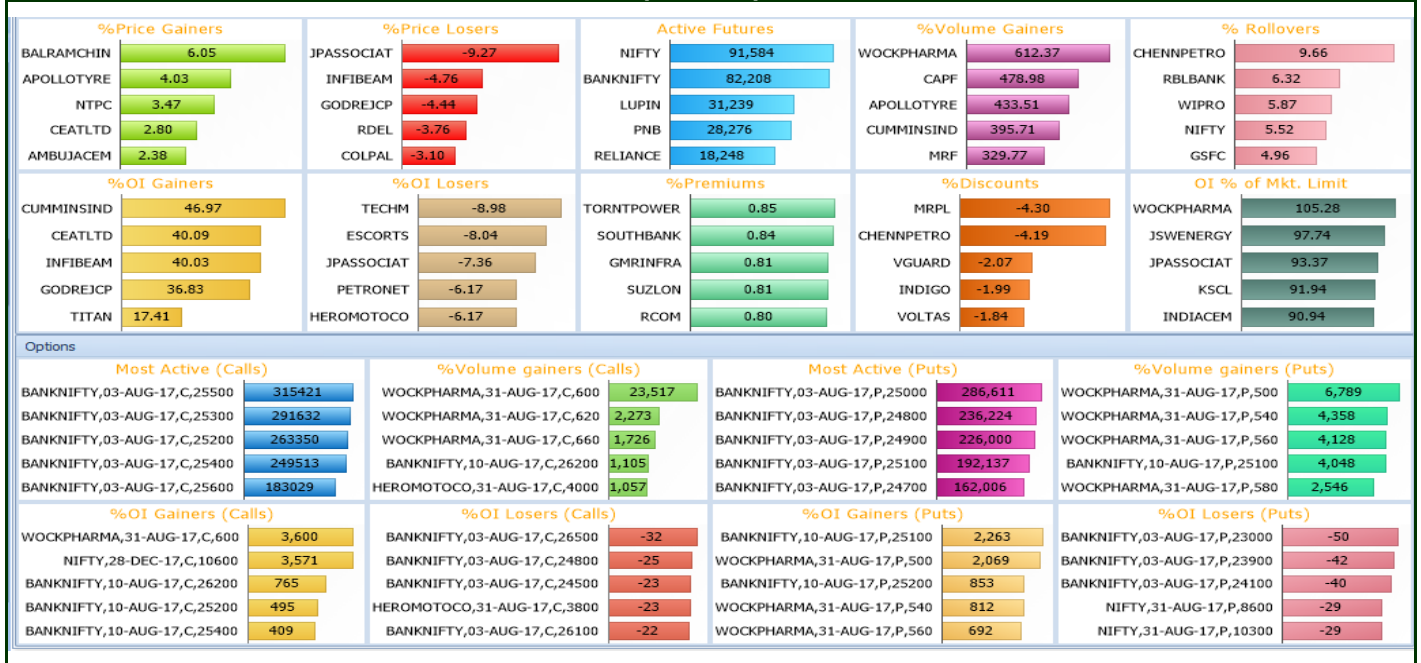
#### Indication

Put Call Ratio based on Open Interest of Nifty fell from 1.31 levels to 1.26 levels as compared to previous session. Historical Volatility fell from 9.07 to 8.93 levels and Implied Volatility also fell from 11.31 levels to 11.05 levels as compared to previous session.

#### Conclusion

Nifty July Future opened on a flattish note and was consolidating at the opening levels in the first half of the session. However it witnessed selling pressure at the higher levels and drifted towards 10080 levels. Finally, it ended the session with the loss of around 60 points. On the downside, the index has supports at 10000-9990 levels while on the upside resistance is around 10150 zones. On the option front, maximum Put OI is at 10000 followed by 9800 strike while maximum Call OI is at 10200 followed by 10100 strike. We have seen put unwinding at 9900 strikes while fresh Call writing is seen at 10100, 10200, 10300 and 10400 strikes. Bank Nifty opened on a positive note but post the RBI announcement it drifted towards 25000 zones and finally ended the session with the loss of around 153 points. Now it has support near to 25000 then 24750 zones while on the upside hurdles are seen at 25250 then 25500 zones.

### Graphic Snapshot



### CORPORATE ACTION

Symbol	Purpose	BoardMeetingDate	Symbol	Purpose	BoardMeetingDate
DRREDDY	Results	27-Jul-17	SINTEX	Results	31-Jul-17
TATAELXSI	Results	27-Jul-17	SIEMENS	Results	31-Jul-17
RELCAPITAL	Results	27-Jul-17	SHREECEM	Results	31-Jul-17
MARUTI	Results	27-Jul-17	UPL	Results	31-Jul-17
ONGC	Results	27-Jul-17	RPOWER	Results	31-Jul-17
ITC	Results	27-Jul-17	HEXAWARE	Results/Dividend	31-Jul-17
HCLTECH	Results/Dividend	27-Jul-17	INDIGO	Results/Others	31-Jul-17
ICICIBANK	Results	27-Jul-17	GODREJCP	Results/Dividend	31-Jul-17
IDFCBANK	Results/Others	27-Jul-17	BEL	Results	31-Jul-17
IDFC	Results	27-Jul-17	BALRAMCHIN	Results/Dividend	31-Jul-17
IDEA	Results	27-Jul-17	JSWSTEEL	Results/Others	1-Aug-17
GLENMARK	Results	27-Jul-17	TORNTPOWER	Results	1-Aug-17
EXIDEIND	Results	27-Jul-17	POWERGRID	Results/Others	1-Aug-17
BIOCON	Results/Others	27-Jul-17	PEL	Results	1-Aug-17
CHOLAFIN	Results/Others	27-Jul-17	RDEL	Results	1-Aug-17
EQUITAS	Results	28-Jul-17	PCJEWELLER	Results	1-Aug-17
LT	Results/Others	28-Jul-17	MARICO	Results	1-Aug-17
LICHSGFIN	Results	28-Jul-17	CAPF	Results/Others	2-Aug-17
INDIACEM	Results	28-Jul-17	WOCKPHARMA	Results	2-Aug-17
ESCORTS	Results	28-Jul-17	VOLTAS	Results	2-Aug-17
BALKRISIND	Results/Dividend	29-Jul-17	RELINFRA	Results	2-Aug-17
NTPC	Results	29-Jul-17	PNB	Results	2-Aug-17
NTPC	Results/Others	29-Jul-17	LUPIN	Results	2-Aug-17
CONCOR	Results	31-Jul-17	BATAINDIA	Results	2-Aug-17
VGUARD	Results	31-Jul-17	COLPAL	Results	3-Aug-17
VGUARD	Results	31-Jul-17	UJJIVAN	Results	3-Aug-17
SRTRANSFIN	Results	31-Jul-17	TITAN	Results	3-Aug-17
TORNTPHARM	Results	31-Jul-17	RAMCOCEM	Results	3-Aug-17
TECHM	Results	31-Jul-17	HCC	Results	3-Aug-17

**Derivatives Lesson: BULL CALL SPREAD**

- A bull call spread is constructed by buying a call option, and selling another out-of-the-money (OTM) call option. Often the call with the lower strike price will be in-the-money while the Call with the higher strike price is out-of-the-money. Both calls must have the same underlying security and expiration month.
- The net effect of the strategy is to bring down the cost and breakeven on a Buy Call (Long Call) Strategy. This strategy is exercised when investor is moderately bullish to bullish, because the investor will make a profit only when the stock price / index rise.
- If the stock price falls to the lower (bought) strike, the investor makes the maximum loss (cost of the trade) and if the stock price rises to the higher (sold) strike, the investor makes the maximum profit.
- $\text{Max Profit} = \text{Strike Price of short call} - \text{Strike Price of Long Call} - \text{Net Premium Paid}$
- $\text{Max Loss} = \text{Net Premium Paid} + \text{Commissions Paid}$
- $\text{Breakeven Point} = \text{Strike Price of Purchased Call} + \text{Net Debit Paid}$

Trading Laws:

- A Trader not observing STOP LOSS cannot survive for long.
- Never re-schedule your stop loss, square up first and then take a fresh view.
- Book small losses by buying / selling near support / resistance, and look for big gains, this will maximize the gains.
- Don't try to anticipate the change in main trend, so don't go against trend

**DISCLAIMER:** This report has been issued by Anand Rathi Securities Limited (ARSL), which is regulated by SEBI. The information herein was obtained from various sources; we do not guarantee its accuracy or completeness. Neither the information nor any opinion expressed constitutes an offer, or an invitation to make an offer, to buy or sell any securities, options, future or other derivatives related to such securities ("related investment"). ARS and its affiliated may trade for their own accounts as market maker/ jobber and/or arbitrageur in any securities of this issuer(s) or in related investments, and may be on the opposite side of public orders. ARS, its affiliates, directors, officers, and employees may have a long or short position in any securities of this issuer(s) or in related investment banking or other business from, any entity mentioned in this report. This research report is prepared for private circulation. It does not have regard to the specific investment objectives, financial situation and the particular needs of any specific person who may receive this report. Investors should seek financial situation and the particular needs of any specific investing in any securities or investment strategies discussed or recommended in this report and should understand that statements regarding future prospects may not be realized. Investors should note that income from such securities, if any, may fluctuate and that each security's price or value may rise or fall. Past performance is not necessarily a guide to future performance. Foreign currency rates of exchange may adversely affect the value, price or income of any security or related investment mentioned in this report.