



DERIVATIVES

Market Statistics

Product	No. of Contracts	Turnover (Rs.cr)
Index Futures	155473	13,249.90
Stock Futures	720964	50,054.90
Index Options	9832956	912591.51
Stock Options	524762	37,318.32
F&O Total	11234155	1013214.64

FII Derivatives Statistics

			OI at end of the day		Inflow / Outflow
	Buy	Sell	Contract	Amount	
Index futures	1429.98	1180.91	342498	25765.59	249.07
Index options	55941.59	53877.83	1241685	94369.76	2063.76
Stock futures	8437.32	8347.17	832227	56933.37	90.15
Stock options	6281.03	6280.23	171977	11823.56	0.80
Net Inflow/Outflow (Cr)					2403.78

Securities in Ban Period

DLF, GMRINFRA, HDIL, IBREALEST, JPASSOCIAT,
JSWENERGY AND JUSTDIAL

Nifty Future/Option Trading Guide

NIFTY	Short term	Medium term
Support	9700	9400
Resistance	9930	10050

Nifty View for the Day

Now it needs to move above 10050 zones to reclaim its upside momentum and support is around 9790 then 9700.

Quote for the Day

"DON'T STOP UNTIL YOU'RE PROUD."

Activity Tracking

Stocks (Long Position)	Remarks
Kajariacer, Bergerpaint, Pidilitind, Manappuram, Tatapower, Auropharma, Tornthpharma, Dalmiabha & Bajajfinserv	Suggesting strength in these counter
Stocks (Short Covering)	Remarks
Godrejcp, Amarajabat, Colpal, Lupin, Maruti, Godrejind, Dcbbank, Concor & Oil	Suggesting strength in these counter
Stocks (Short Position)	Remarks
Indigo, Bajaj-auto, SRF, Nationalalum, IGL, Bharatforge CGpower, Fortis & NTPC	Suggesting weakness in these counter
Stocks (Long Liquidation)	Remarks
M&mf, Apollotyre, Bataind, Jetairways, Vgaurd, Sintex, Bajfinance, Ofss & Ibulhsgfin	Suggesting weakness in these counter

Activity in F&O

Nifty future closed on a positive note at 9873.25 levels. Nifty future open interest increased by 0.56% with a rise in price by 0.11%. It closed at a premium of 16 point as compared to premium of 10 points of previous trading session. Market witnessed buying interest in Pharma, Metals and IT sector stocks while some bit of selling pressure was seen in FMCG sector stocks. The market turnover increased by 35% in terms of number of contracts traded vis-à-vis previous trading day and in terms of rupees it increased by 42%.

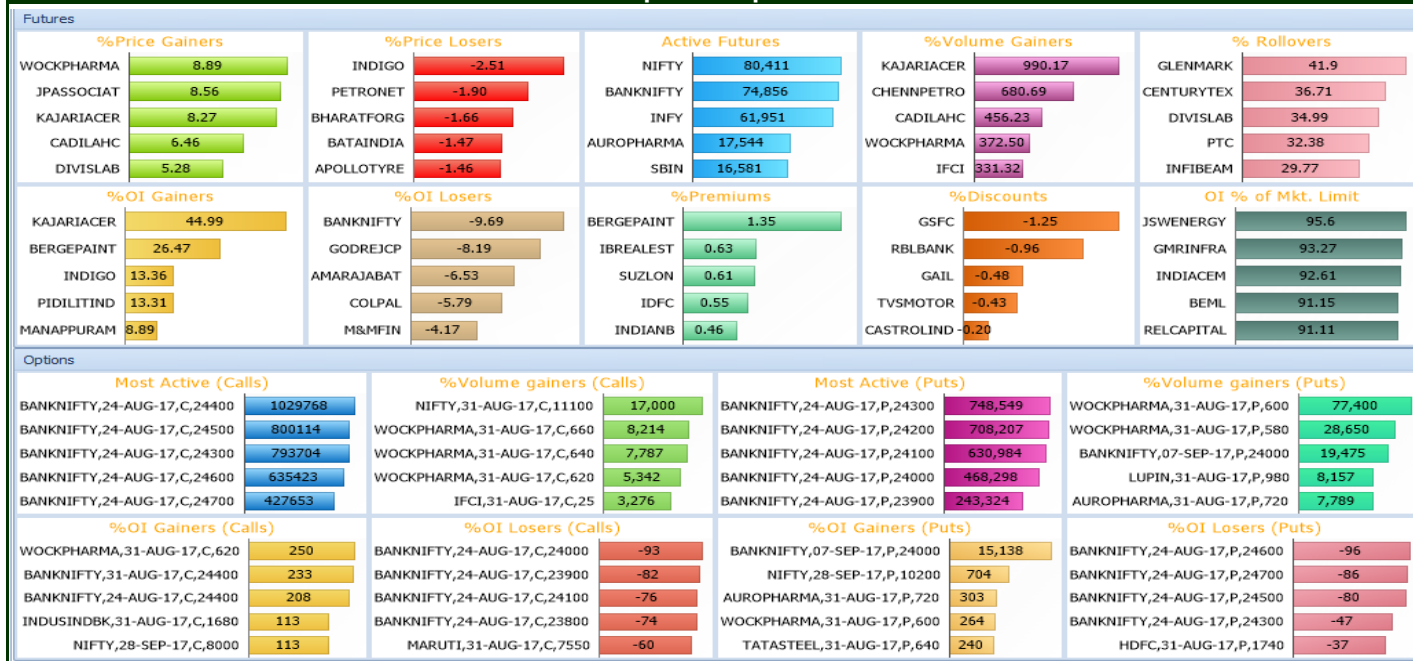
Indication

Put Call Ratio based on Open Interest of Nifty moved up from 1.18 levels to 1.22 levels as compared to previous session. Historical Volatility fell down from 12.31 to 11.94 levels but Implied Volatility moved up from 11.78 levels to 11.94 levels as compared to previous session.

Conclusion

Nifty August Future opened on a positive note and after the initial consolidation the bulls managed to pull the market towards 9875 levels. It witnessed strong buying interest at every minor decline and finally the session ended on a positive note with the gains of around 20 points. India Vix was down by around 5%. On the option front, maximum Put OI is at 9800 strike followed by 9700 strike while maximum Call OI is at 10000 followed by 10100 strike. We have seen put writing at all the strikes in between 9650 to 9900 strikes while, call unwinding was seen at 9700 and 10100 strikes. Bank Nifty opened on a positive note and traded in line with nifty. It was trading above its 24200 zones for the most part of the day and finally it ended the session on a flattish note. Now it has support near to 24000 zones then 23600 while on the upside hurdles are seen at 24600 then 24800 zones.

Graphic Snapshot



CORPORATE ACTION

Symbol	Purpose	Ex-Date	Record Date
IOC	Annual General Meeting/Dividend - Re 1/- Per Share	18-Aug-17	-
L&TFH	Annual General Meeting/Dividend - Re 0.80 Per Share	18-Aug-17	-
INDIGO	Annual General Meeting/Dividend - Rs 34/- Per Share	18-Aug-17	-
JUBLFOOD	Annual General Meeting/Dividend - Rs 2.50 Per Share	18-Aug-17	-
KSCL	Interim Dividend - Rs 3/- Per Share	18-Aug-17	21-Aug-17
SUNTV	Interim Dividend-Rs 2.50 Per Share	21-Aug-17	22-Aug-17
SAIL	Annual General Meeting	21-Aug-17	-
MCDOWELL-N	Annual General Meeting	22-Aug-17	-
MANAPPURAM	Dividend - Re 0.50 Per Share	22-Aug-17	23-Aug-17
BALRAMCHIN	Annual General Meeting	22-Aug-17	-
BHEL	Annual General Meeting/Dividend - Re 0.78/- Per Share (Book Closure Dates Revised)	23-Aug-17	-
AUROPHARMA	Annual General Meeting	23-Aug-17	-
PIDILITIND	Annual General Meeting/Dividend - Rs 4.75 Per Share	23-Aug-17	-
GRANULES	Interim Dividend - Re 0.25 Per Share	23-Aug-17	25-Aug-17
INDIACEM	Annual General Meeting/Dividend - Re 1/- Per Share	24-Aug-17	-
MARUTI	Dividend - Rs 75/- Per Share	24-Aug-17	-
GAIL	Dividend - Rs 2.70 Per Share	31-Aug-17	-
GSFC	Annual General Meeting/Dividend - Rs 2.20 Per Share	31-Aug-17	-
IBULHSGFIN	Annual General Meeting	31-Aug-17	-
JETAIRWAYS	Annual General Meeting	1-Sep-17	-
SINTEX	Annual General Meeting/Dividend - Re 0.25 Per Share	4-Sep-17	-
HINDALCO	Annual General Meeting/Dividend - Rs 1.10 Per Share	5-Sep-17	-
BALKRISIND	Annual General Meeting/Dividend - Rs 2.50 Per Share	6-Sep-17	-
NBCC	Annual General Meeting/ Dividend - Rs 1.10 Per Share	7-Sep-17	-
GODFRYPHLP	Annual General Meeting/Dividend - Rs 8/- Per Share	7-Sep-17	-
PETRONET	Annual General Meeting/Dividend - Rs 5/- Per Share	7-Sep-17	-
APOLLOHOSP	Annual General Meeting/Dividend - Rs 6/- Per Share	7-Sep-17	-
ENGINEERSIN	Annual General Meeting/Dividend - 0.50 Per Share	11-Sep-17	-
OFSS	Annual General Meeting	12-Sep-17	-
REPCOHOME	Dividend - Rs 2/- Per Share	13-Sep-17	-
UBL	Annual General Meeting/Dividend - Rs 1.15 Per Share	14-Sep-17	-
SUZLON	Annual General Meeting	14-Sep-17	-
MGL	Annual General Meeting/Dividend - Rs 11/- Per Share	14-Sep-17	-
RECLTD	Annual General Meeting/Dividend - Rs 2.65 Per Share	14-Sep-17	-
JISJALEQS	Annual General Meeting/Dividend - Re 0.75 Per Share	14-Sep-17	-
GLENMARK	Annual General Meeting/Dividend - Rs 2/- Per Share	20-Sep-17	-
GRANULES	Annual General Meeting/Dividend - Re 0.25 Per Share (Book Closure Dates Revised)	20-Sep-17	-
KSCL	Annual General Meeting	21-Sep-17	-

Derivatives Lesson: LONG BUTTERFLY STRATEGY

- The butterfly spread is a neutral strategy that is a combination of a bull spread and a bear spread. It is a limited profit, limited risk options strategy. There are 3 striking prices involved in a butterfly spread and it can be constructed using calls or puts.
- Long butterfly spreads are entered when the investor thinks that the underlying stock will not rise or fall much by expiration. Using calls, the long butterfly can be constructed by buying one lower striking in-the-money call, writing two at-the-money calls and buying another higher striking out-of-the-money call. A resulting net debit is taken to enter the trade.
- $\text{Max Profit} = \text{Strike Price of Short Call} - \text{Strike Price of Lower Strike Long Call} - \text{Net Premium Paid} - \text{Commissions Paid}$
- $\text{Max Loss} = \text{Net Premium Paid} + \text{Commissions Paid}$
- $\text{Upper Breakeven Point} = \text{Strike Price of Higher Strike Long Call} - \text{Net Premium Paid}$
- $\text{Lower Breakeven Point} = \text{Strike Price of Lower Strike Long Call} + \text{Net Premium Paid}$

Trading Laws:

- A Trader not observing STOP LOSS cannot survive for long.
- Never re-schedule your stop loss, square up first and then take a fresh view.
- Book small losses by buying / selling near support / resistance, and look for big gains, this will maximize the gains.
- Don't try to anticipate the change in main trend, so don't go against trend

DISCLAIMER: This report has been issued by Anand Rathi Securities Limited (ARSL), which is regulated by SEBI. The information herein was obtained from various sources; we do not guarantee its accuracy or completeness. Neither the information nor any opinion expressed constitutes an offer, or an invitation to make an offer, to buy or sell any securities, options, future or other derivatives related to such securities ("related investment"). ARS and its affiliated may trade for their own accounts as market maker/ jobber and/or arbitrageur in any securities of this issuer(s) or in related investments, and may be on the opposite side of public orders. ARS, its affiliates, directors, officers, and employees may have a long or short position in any securities of this issuer(s) or in related investment banking or other business from, any entity mentioned in this report. This research report is prepared for private circulation. It does not have regard to the specific investment objectives, financial situation and the particular needs of any specific person who may receive this report. Investors should seek financial situation and the particular needs of any specific investing in any securities or investment strategies discussed or recommended in this report and should understand that statements regarding future prospects may not be realized. Investors should note that income from such securities, if any, may fluctuate and that each security's price or value may rise or fall. Past performance is not necessarily a guide to future performance. Foreign currency rates of exchange may adversely affect the value, price or income of any security or related investment mentioned in this report.