

Equity Bazaar

1st Nov 17



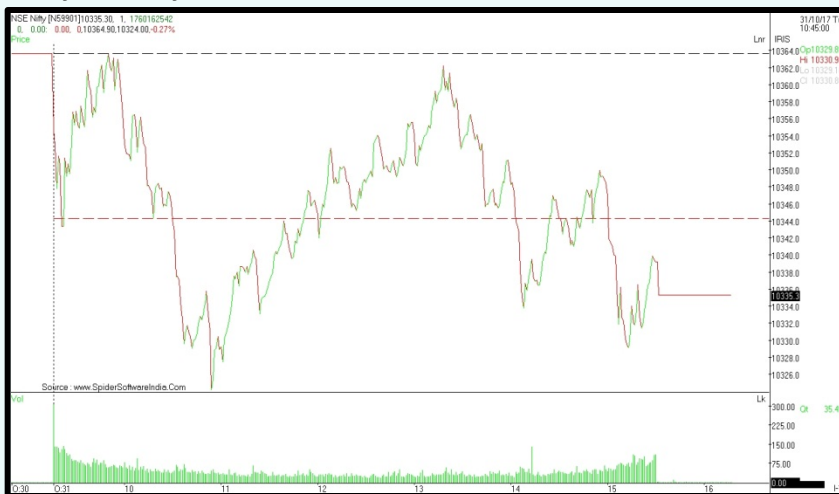
Today, We may witness a mild positive opening in the Nifty around 10365 level on the back of SGX Nifty and other Asian counters which are trading on a mild positive note today.

India's fiscal deficit at the end of the first half of the current fiscal touched 91.3 percent of the budget estimate, mainly due to rise in expenditure. For 2017-18, the government aims to bring down the fiscal deficit to 3.2 percent of the GDP. Last fiscal, it had met the 3.5 percent target.

Eight core sectors grew to a six-month high of 5.2 percent in September, helped by a robust performance in coal, natural gas and refinery segments, official data showed on Monday. The eight infrastructure sectors — coal, crude oil, natural gas, refinery products, fertilisers, steel, cement and electricity — had witnessed a growth of 5.3 percent in September last year.

As many as 46 companies are scheduled to report results for quarter ended September on Wednesday including the likes of Tech Mahindra, Hero MotoCorp, TVS Motor, Apollo Tyres, Hexaware, Godrej Consumer, Andhra Bank, Greaves Cotton, Grindwell Norton, JSW Energy, Kirloskar Industries, Mahindra Holidays, etc among others.

Nifty Intraday



Indian Markets

SENSEX	33,213	-0.16%
NIFTY	10,335	-0.27%
SGX Nifty*	10,410	0.30%

Global Indices

Dow Jones	22,980	0.30%
Nasdaq	6,728	0.43%
FTSE	7,493	0.07%
DAX	13,230	0.09%
Straits Times	3,389	0.44%
Nikkei 225	22,325	1.40%
Hang Seng	28,412	0.59%

Commodities

Gold	29,153	-0.79%
Silver	38,818	-1.15%
Natural Gas	188	-3.14%
Crude Oil	3,528	0.43%

Currency

Dollar / Rupee	64.75	-0.15%
Euro / Rupee	75.31	-0.09%
Pound / Rupee	85.94	-0.06%

Volumes Rs.mn

Cash BSE	48,180	12.51
Cash NSE	351,101	6.44

FII Activities Rs.Cr.

Purchase	Sale	Net
7052.53	6,584	468.23

MF Activities Rs.Cr.

Purchase	Sale	Net
7503.33	7,128	375.59

*Sources- Bloomberg, Moneycontrol, Zeebusiness, livemint

Equity Bazaar

1st Nov 17



Nifty Outlook



	L1	L2	L3
R	10383	10404	10423
S	10343	10324	10303

Moving Averages	
21 DEMA	10156
100 DEMA	9862
200 DEMA	9524

- The Nifty index opened flat and ended the session in red due to some profit booking, settled at 10335.30 losing 28.35 points.
- On an hourly chart, the Index has given a close above its 50 hourly exponential moving average which suggests that the Nifty may give a bounce back move.
- A daily momentum indicator RSI reading is at 66.53, trending above the average line which points out for a positive breath in the index.
- Based on the ongoing move, we are expecting a higher side resistance level at 10400 while downside support comes at 10300 level.

Bank Nifty Outlook



	L1	L2	L3
R	24957	25074	25154
S	24760	24680	24563

Moving Averages	
21 DEMA	24523
100 DEMA	23940
200 DEMA	22816

- The market breadth was narrow, the Banknifty index closed at 25019.35 gaining marginal 30.80 points.
- On a daily chart, the index had opened on a positive note and hovering around 25000 mark during the session.
- As per hourly chart, the index has been trading in a range bound move since last four days which doesn't indicate any particular direction, however, the Index has taken a support of its 20 hourly exponential moving average which suggests a bounce back moves in the Index.
- A daily momentum indicator RSI reading is at 60.83, trending above its average line which points out for a positive breath in the index.
- Based on the ongoing move, we are expecting a higher side resistance level at 25300 while downside support comes at 24800 level.

Equity Bazaar

1st Nov 17



Symbols	CLOSE	R3	R2	R1	P	S1	S2	S3	Trend	Action
ADANIPTS	431	444	437	434	430	427	422	415	Up	Buy
AMBUJACEM	281	300	292	286	284	278	276	268	Down	Sell
ASIANPAINT	1182	1208	1195	1189	1182	1176	1170	1157	Down	Sell
AUROPHARMA	762	797	780	771	763	754	746	729	Down	Sell
AXISBANK	525	587	552	538	516	503	480	444	Up	Buy
BAJAJ-AUTO	3260	3360	3314	3287	3269	3242	3223	3178	Down	Sell
BAJFINANCE	1800	1899	1849	1825	1800	1775	1750	1701	Up	Buy
BHARTIARTL	498	529	513	505	496	489	479	463	Up	Buy
BOSCHLTD	21000	21742	21424	21212	21106	20894	20788	20470	Down	Sell
BPCL	541	572	555	548	537	530	520	503	Up	Buy
CIPLA	626	654	641	634	628	620	614	601	Down	Sell
COALINDIA	287	296	291	289	286	284	281	276	Up	Buy
DRREDDY	2428	2669	2555	2491	2441	2377	2327	2213	Down	Sell
EICHERMOT	32209	33525	32958	32583	32392	32017	31825	31259	Down	Sell
GAIL	465	495	482	474	469	460	455	442	Down	Sell
HCLTECH	855	898	875	865	851	841	827	804	Up	Buy
HDFC	1701	1769	1739	1720	1709	1690	1679	1649	Down	Sell
HDFCBANK	1809	1831	1819	1814	1807	1802	1794	1782	Up	Buy
HEROMOTOCO	3854	3945	3897	3875	3849	3827	3800	3752	Up	Buy
HINDALCO	268	287	278	273	269	264	260	251	Down	Sell
HINDPETRO	447	482	466	456	450	440	434	417	Down	Sell
HINDUNILVR	1239	1279	1259	1249	1240	1230	1220	1201	Down	Sell
IBULHSGFIN	1243	1309	1280	1261	1251	1233	1222	1193	Down	Sell
ICICIBANK	300	310	305	303	301	298	296	291	Down	Sell
INDUSINDBK	1630	1677	1653	1642	1630	1619	1607	1584	Down	Sell
INFRADEL	442	495	466	454	437	425	407	378	Up	Buy
INFY	922	944	934	928	924	918	914	904	Down	Sell
IOC	416	437	427	421	417	411	407	398	Down	Sell
ITC	266	272	269	267	266	264	263	259	Up	Buy
KOTAKBANK	1027	1054	1041	1034	1028	1021	1015	1002	Down	Sell
LT	1223	1279	1252	1237	1224	1210	1197	1169	Down	Sell
LUPIN	1026	1080	1053	1039	1025	1011	997	969	Up	Buy
M&M	1346	1427	1391	1369	1355	1333	1319	1284	Down	Sell
MARUTI	8220	8323	8264	8242	8205	8183	8145	8086	Up	Buy
NTPC	180	187	184	182	181	179	178	175	Down	Sell
ONGC	191	204	197	194	189	186	182	174	Up	Buy
POWERGRID	212	230	222	217	214	209	206	197	Down	Sell
RELIANCE	944	968	954	949	941	936	927	914	Up	Buy
SBIN	307	327	318	312	308	303	299	289	Down	Sell
SUNPHARMA	552	578	565	559	552	546	540	527	Up	Buy
TATAMOTORS	428	455	443	436	432	424	420	408	Down	Sell
TATASTEEL	704	775	743	723	710	691	678	645	Down	Sell
TCS	2619	2697	2659	2639	2620	2600	2581	2543	Down	Sell
TECHM	483	503	492	488	482	477	472	461	Up	Buy
ULTRACEMCO	4400	4588	4505	4453	4422	4370	4339	4256	Down	Sell
UPL	799	892	851	825	810	784	768	727	Down	Sell
VEDL	332	362	348	340	335	327	322	309	Down	Sell
WIPRO	295	302	298	297	295	293	291	287	Up	Buy
YESBANK	315	331	323	319	315	311	307	299	Down	Sell
ZEEL	543	562	553	548	543	539	534	524	Down	Sell

Contact Us

www.choicebroking.in

Kkunal Parar

Sr. Research Associate

kkunal.parar@choiceindia.com

Janhvee Mishra

Research Associate

janhvee.mishra@choiceindia.com

Vikas Chaudhari

Research Associate

vikas.chaudhari@choiceindia.com

Rupak De

Research Associate

rupak.de@choiceindia.com



customercare@choiceindia.com



www.choicebroking.in



Disclaimer

This is solely for information of clients of Choice Broking and does not constitute to be an investment advice. It is also not intended as an offer or solicitation for the purchase and sale of any financial instruments. Any action taken by you on the basis of the information contained herein is your responsibility alone and Choice Broking its subsidiaries or its employees or associates will not be liable in any manner for the consequences of such action taken by you. We have exercised due diligence in checking the correctness and authenticity of the information contained in this recommendation, but Choice Broking or any of its subsidiaries or associates or employees shall not be in any way responsible for any loss or damage that may arise to any person from any inadvertent error in the information contained in this recommendation or any action taken on basis of this information. Technical analysis studies market psychology, price patterns and volume levels. It is used to forecast future price and market movements. Technical analysis is complementary to fundamental analysis and news sources. The recommendations issued herewith might be contrary to recommendations issued by Choice Broking in the company research undertaken as the recommendations stated in this report is derived purely from technical analysis. Choice Broking has based this document on information obtained from sources it believes to be reliable but which it has not independently verified; Choice Broking makes no guarantee, representation or warranty and accepts no responsibility or liability as to its accuracy or completeness. The opinions contained within the report are based upon publicly available information at the time of publication and are subject to change without notice. The information and any disclosures provided herein are in summary form and have been prepared for informational purposes. The recommendations and suggested price levels are intended purely for trading purposes. The recommendations are valid for the day of the report however trading trends and volumes might vary substantially on an intraday basis and the recommendations may be subject to change. The information and any disclosures provided herein may be considered confidential. Any use, distribution, modification, copying, forwarding or disclosure by any person is strictly prohibited. The information and any disclosures provided herein do not constitute a solicitation or offer to purchase or sell any security or other financial product or instrument. The current performance may be unaudited. Past performance does not guarantee future returns. There can be no assurance that investments will achieve any targeted rates of return, and there is no guarantee against the loss of your entire investment.

POTENTIAL CONFLICT OF INTEREST DISCLOSURE (as on date of report) Disclosure of interest statement – • Analyst interest of the stock /Instrument(s): - No. • Firm interest of the stock / Instrument (s): - No.