

# Equity Bazaar

02nd May 17



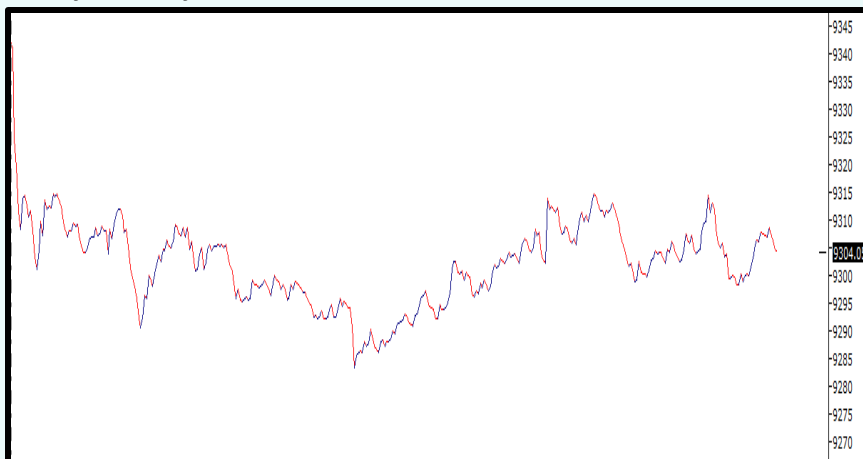
Today, We may witness a opening in the Nifty around 9330 level on back of SGX Nifty and other Asian counters which are trading on a positive note today.

North Korea warned on Monday that it will carry out a nuclear test "at any time and at any location" set by its leadership, in the latest rhetoric to fuel jitters in the region. Tensions on the Korean peninsula have been running high for weeks, with signs that the North might be preparing a long-range missile launch or a sixth nuclear test and with Washington refusing to rule out a military strike in response.

The government on Saturday exuded confidence that the US administration will take into account the benefits Indian IT firms brought in for American companies when it goes for the H1-B visa policy review.

US President Donald Trump said he was actively considering breaking up big banks. Trump's comments could give a push to efforts to revive the Depression-era Glass-Steagall law that separated commercial lending from investment banking. Reviving such a law would require an act by Congress. However, markets didn't like the ideas as US stocks sharply pared gains after Trump's comments and the S&P 500 bank index dropped nearly 1 percent before rebounding.

## Nifty Intraday



## Indian Markets

SENSEX	29,918	-0.37%
NIFTY	9,304	-0.41%
SGX Nifty*	9,350	-0.08%

## Global Indices

Dow Jones	20,920	-0.11%
Nasdaq	6,092	0.72%
FTSE	7,204	-0.46%
DAX	12,438	-0.05%
Straits Times	3,203	0.85%
Nikkei 225	19,446	0.70%
Hang Seng	24,705	0.36%

## Commodities

Gold	28,653	-0.77%
Silver	38,685	-2.11%
Natural Gas	207	-2.66%
Crude Oil	3,142	-1.02%

## Currency

Dollar / Rupee	64.24	0.14%
Euro / Rupee	70.09	0.11%
Pound / Rupee	82.90	0.16%

## Volumes Rs.mn

Cash BSE	43,361	17.87
Cash NSE	265,168	-14.59

## FII Activities Rs.Cr.

Purchase	Sale	Net
8023.92	7,152	871.71

## MF Activities Rs.Cr.

Purchase	Sale	Net
7313.22	4,580	2732.94

\*Sources- Bloomberg, Moneycontrol, Zeebusiness, livemint

# Equity Bazaar

02nd May 17



## Nifty Outlook



	L1	L2	L3
R	9337	9369	9397
S	9277	9249	9217

Moving Averages	
21 DEMA	9197
100 DEMA	8851
250 DEMA	8551

- Nifty has consecutively moving higher but from past 3 trading session nifty is compressed in a range.
- In previous trading session Nifty has formed low at its previous upper band of consolidation phase and it also coincide with gap up area.
- Nifty is still well positioned above its 21 day short term moving average.
- Going forward, considering recent phase as continuous sign we can hold upside bias with SL of 9280 and target at 9400 level.

## Bank Nifty Outlook



	L1	L2	L3
R	22433	22509	22634
S	22232	22107	22031

Moving Averages	
21 DEMA	21717
100 DEMA	20458
250 DEMA	19319

- Nifty bank continued to demonstrate relatively strong performance and moving higher.
- On weekly chart Nifty bank has formed strong bull candle in spite of lackluster move in broader market.
- Momentum oscillator RSI is sailing higher in compare to its average line and hovering in overbought zone.
- Going forward, positive bias can be retained with target of 22700 and SL on downside at 22150 level.

# Equity Bazaar

02nd May 17



Symbols	CLOSE	R3	R2	R1	P	S1	S2	S3	Trend	Action
ACC	1625	1680	1651	1638	1622	1609	1593	1564	Up	Buy
ADANIPTS	327	339	332	329	326	323	319	312	Up	Buy
AMBUJACEM	245	258	252	249	246	243	240	234	Down	Sell
ASIANPAINT	1122	1157	1137	1130	1117	1110	1098	1078	Up	Buy
AUROPHARMA	608	650	631	620	612	600	593	573	Down	Sell
AXISBANK	509	531	520	515	510	504	499	488	Down	Sell
BAJAJ-AUTO	2871	2972	2924	2897	2876	2849	2828	2780	Down	Sell
BANKBARODA	188	200	193	190	186	183	179	172	Up	Buy
BHARTIARTL	355	369	362	358	354	351	347	340	Up	Buy
BOSCHLTD	22900	24112	23457	23178	22802	22523	22147	21492	Up	Buy
BPCL	725	773	750	738	727	715	704	681	Down	Sell
CIPLA	556	572	565	560	558	553	551	544	Down	Sell
COALINDIA	277	285	281	279	276	275	272	268	Up	Buy
DRREDDY	2598	2657	2627	2613	2598	2583	2569	2540	Down	Sell
EICHERMOT	26150	26682	26403	26276	26123	25997	25844	25564	Up	Buy
GAIL	423	440	430	427	421	417	411	402	Up	Buy
GRASIM	1153	1240	1202	1177	1164	1139	1126	1088	Down	Sell
HCLTECH	816	852	832	824	812	804	792	771	Up	Buy
HDFC	1537	1613	1579	1558	1545	1524	1511	1477	Down	Sell
HDFCBANK	1545	1593	1570	1558	1547	1535	1525	1502	Down	Sell
HEROMOTOCO	3340	3427	3375	3357	3323	3305	3271	3219	Up	Buy
HINDALCO	199	221	210	204	198	193	187	175	Up	Buy
HINDUNILVR	934	964	951	942	937	929	924	911	Down	Sell
IBULHSGFIN	1018	1065	1038	1028	1012	1001	985	958	Up	Buy
ICICIBANK	278	290	283	281	277	274	270	264	Up	Buy
INDUSINDBK	1450	1537	1497	1473	1457	1434	1417	1377	Down	Sell
INFRATEL	357	390	375	366	360	351	344	329	Down	Sell
INFY	921	945	933	927	921	915	910	898	Down	Sell
IOC	441	469	455	448	440	433	426	412	Up	Buy
ITC	278	299	290	284	281	275	271	262	Down	Sell
KOTAKBANK	902	945	927	914	908	895	889	870	Down	Sell
LT	1749	1803	1777	1763	1752	1738	1726	1701	Down	Sell
LUPIN	1337	1449	1396	1366	1343	1313	1289	1236	Down	Sell
M&M	1336	1388	1361	1348	1333	1321	1305	1278	Up	Buy
MARUTI	6511	6896	6696	6604	6497	6404	6298	6099	Up	Buy
NTPC	9304	9430	9370	9337	9310	9277	9249	9189	Down	Sell
ONGC	165	168	166	165	164	164	163	161	Up	Buy
POWERGRID	186	200	192	189	184	181	176	169	Up	Buy
RELIANCE	208	213	210	209	208	207	205	202	Up	Buy
SBIN	1394	1460	1431	1413	1402	1383	1373	1343	Down	Sell
SUNPHARMA	289	304	296	293	288	284	279	271	Up	Buy
TATAMOTORS	643	655	648	646	641	639	635	628	Up	Buy
TATAMTRDVR	459	474	466	463	459	455	451	443	Up	Buy
TATAPOWER	280	292	285	283	279	276	273	267	Up	Buy
TATASTEEL	85	87	86	85	85	84	83	82	Up	Buy
TCS	448	477	464	456	451	443	438	425	Down	Sell
TECHM	2275	2342	2311	2293	2281	2262	2250	2219	Down	Sell
ULTRACEMCO	417	446	433	425	421	413	408	395	Down	Sell
WIPRO	4231	4347	4293	4262	4239	4208	4185	4131	Down	Sell
YESBANK	496	510	502	499	494	491	487	479	Up	Buy
ZEEL	1636	1680	1657	1646	1634	1624	1611	1588	Up	Buy

## Contact Us

[www.choicebroking.in](http://www.choicebroking.in)

**Kkunal Parar**

*Sr. Research Associate*

kkunal.parar@choiceindia.com

**Kapil Shah**

*Research Associate*

kapil.shah@choiceindia.com

**Vikas Chaudhari**

*Research Associate*

vikas.chaudhari@choiceindia.com

**Amit Pathania**

*Research Associate*

amit.pathania@choiceindia.com



[customercare@choiceindia.com](mailto:customercare@choiceindia.com)



[www.choicebroking.in](http://www.choicebroking.in)



## Disclaimer

This is solely for information of clients of Choice Broking and does not constitute to be an investment advice. It is also not intended as an offer or solicitation for the purchase and sale of any financial instruments. Any action taken by you on the basis of the information contained herein is your responsibility alone and Choice Broking its subsidiaries or its employees or associates will not be liable in any manner for the consequences of such action taken by you. We have exercised due diligence in checking the correctness and authenticity of the information contained in this recommendation, but Choice Broking or any of its subsidiaries or associates or employees shall not be in any way responsible for any loss or damage that may arise to any person from any inadvertent error in the information contained in this recommendation or any action taken on basis of this information. Technical analysis studies market psychology, price patterns and volume levels. It is used to forecast future price and market movements. Technical analysis is complementary to fundamental analysis and news sources. The recommendations issued herewith might be contrary to recommendations issued by Choice Broking in the company research undertaken as the recommendations stated in this report is derived purely from technical analysis. Choice Broking has based this document on information obtained from sources it believes to be reliable but which it has not independently verified; Choice Broking makes no guarantee, representation or warranty and accepts no responsibility or liability as to its accuracy or completeness. The opinions contained within the report are based upon publicly available information at the time of publication and are subject to change without notice. The information and any disclosures provided herein are in summary form and have been prepared for informational purposes. The recommendations and suggested price levels are intended purely for trading purposes. The recommendations are valid for the day of the report however trading trends and volumes might vary substantially on an intraday basis and the recommendations may be subject to change. The information and any disclosures provided herein may be considered confidential. Any use, distribution, modification, copying, forwarding or disclosure by any person is strictly prohibited. The information and any disclosures provided herein do not constitute a solicitation or offer to purchase or sell any security or other financial product or instrument. The current performance may be unaudited. Past performance does not guarantee future returns. There can be no assurance that investments will achieve any targeted rates of return, and there is no guarantee against the loss of your entire investment.

POTENTIAL CONFLICT OF INTEREST DISCLOSURE (as on date of report) Disclosure of interest statement – • Analyst interest of the stock /Instrument(s): - No. • Firm interest of the stock / Instrument (s): - No.