

Equity Bazaar

3rd Nov 17



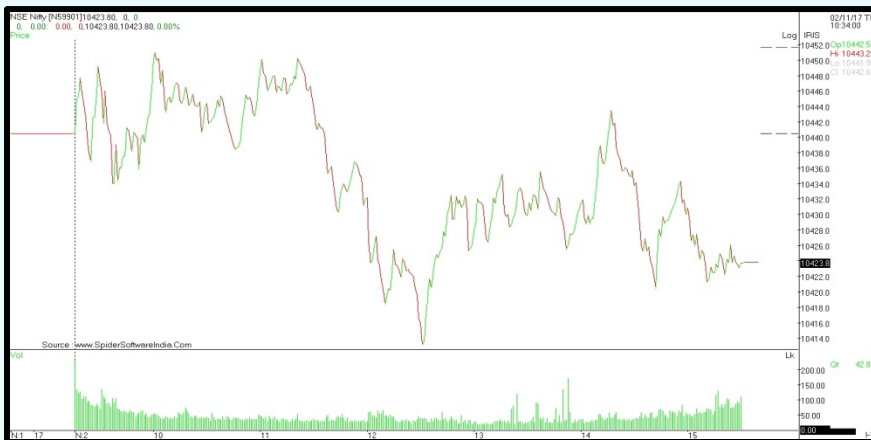
Today, We may witness a flat opening in the Nifty around 10440 level on the back of SGX Nifty and other Asian counters which are trading on a flat note today.

President Donald Trump on Thursday tapped Fed Governor Jerome Powell to become head of the US central bank. Powell, a lawyer and investment banker appointed to the Fed board in 2012 by then-President Barack Obama, emerged as Trump's choice from a slate of possible nominees that included Yellen and others.

As many as 40 companies will declare their Q2 results including Hindalco, Edelweiss Financial Services, EPC Industries, Godrej Properties, PFC, PNB, Tata Power, Titan Company, Torrent Pharma, Trident, UCO Bank, Union Bank of India, VRL Logistics etc. among others.

The initial public offer (IPO) of New India Assurance Company was subscribed 1.07 times on the second day of bidding on Thursday. The IPO, which aims to raise Rs 9,600 crore, received bids for 12,87,66,114 shares against the total issue size of 12,00,00,000 shares. Khadim India's initial public offer was subscribed 14 percent on the first day of bidding on Thursday. The IPO, which aims to raise Rs 543 crore, received bids for 7,16,960 shares against the total issue size of 50,73,006 shares.

Nifty Intraday



Indian Markets

| | | |
|------------|--------|--------|
| SENSEX | 33,573 | -0.08% |
| NIFTY | 10,423 | -0.15% |
| SGX Nifty* | 10,473 | 0.17% |

Global Indices

| | | |
|---------------|--------|--------|
| Dow Jones | 22,980 | 0.30% |
| Nasdaq | 6,715 | -0.02% |
| FTSE | 7,555 | 0.89% |
| DAX | 13,441 | -0.18% |
| Straits Times | 3,372 | -0.25% |
| Nikkei 225 | 22,539 | 0.53% |
| Hang Seng | 28,595 | 0.27% |

Commodities

| | | |
|-------------|--------|--------|
| Gold | 29,244 | 0.08% |
| Silver | 39,614 | -0.22% |
| Natural Gas | 190 | 1.68% |
| Crude Oil | 3,520 | 0.57% |

Currency

| | | |
|----------------|-------|-------|
| Dollar / Rupee | 64.61 | 0.03% |
| Euro / Rupee | 75.27 | 0.01% |
| Pound / Rupee | 84.40 | 0.11% |

Volumes Rs.mn

| | | |
|----------|---------|--------|
| Cash BSE | 49,332 | -52.66 |
| Cash NSE | 339,094 | -10.55 |

FII Activities Rs.Cr.

| Purchase | Sale | Net |
|----------|-------|--------|
| 6803.41 | 6,057 | 746.22 |

MF Activities Rs.Cr.

| Purchase | Sale | Net |
|----------|-------|--------|
| 9264.35 | 8,056 | 1208.3 |

*Sources- Bloomberg, Moneycontrol, Zeebusiness, livemint

Equity Bazaar

3rd Nov 17



Nifty Outlook



| | L1 | L2 | L3 |
|---|-------|-------|-------|
| R | 10447 | 10470 | 10488 |
| S | 10406 | 10388 | 10365 |

| Moving Averages | |
|-----------------|-------|
| 21 DEMA | 10217 |
| 100 DEMA | 9892 |
| 200 DEMA | 9552 |

- The Nifty index made a fresh all-time high level of 10453 and seen consolidation during the session, closed at 10423.80 losing 16.70 points.
- On an hourly chart, the index had opened with a flat note and moved towards south up to the 20 hours exponential moving average, placed at 10411 level.
- On a daily chart, the index has been trading in an upward rising channel and it seems that the index may continue its northward move.
- A daily momentum indicator RSI reading is at 69.78, trending above the average line which points out for a positive breath in the index.
- Based on the ongoing move, we are expecting a higher side resistance level at 10500-10520 while downside support comes at 10380 level.

Bank Nifty Outlook



| | L1 | L2 | L3 |
|---|-------|-------|-------|
| R | 25548 | 25670 | 25741 |
| S | 25355 | 25284 | 25162 |

| Moving Averages | |
|-----------------|-------|
| 21 DEMA | 24722 |
| 100 DEMA | 24025 |
| 200 DEMA | 22900 |

- The market breadth was narrow, the Banknifty index closed at 25427.30 losing 63.15 points.
- On an hourly chart, the index had opened on a positive note and made a fresh all-time high level of 25598 before moving towards in south direction.
- On a daily chart, the Index has been trading in an uncharted territory with ample volume activity and some large-cap Bank's active performance may lead the BankNifty towards new all-time high.
- A daily momentum indicator RSI reading is at 65.95, heading towards the overbought zone which points out for a positive breath in the index.
- Based on the ongoing move, we are expecting a higher side resistance level at 25800 while downside support comes at 25150 level.

Equity Bazaar

3rd Nov 17



| Symbols | CLOSE | R3 | R2 | R1 | P | S1 | S2 | S3 | Trend | Action |
|------------|-------|-------|-------|-------|-------|-------|-------|-------|-------|--------|
| ADANIPTS | 438 | 458 | 447 | 442 | 435 | 431 | 424 | 412 | Up | Buy |
| AMBUJACEM | 280 | 295 | 288 | 284 | 282 | 277 | 275 | 268 | Down | Sell |
| ASIANPAINT | 1180 | 1208 | 1192 | 1186 | 1176 | 1170 | 1160 | 1144 | Up | Buy |
| AUROPHARMA | 790 | 845 | 815 | 803 | 785 | 773 | 755 | 726 | Up | Buy |
| AXISBANK | 537 | 557 | 545 | 541 | 534 | 529 | 522 | 510 | Up | Buy |
| BAJAJ-AUTO | 3218 | 3360 | 3299 | 3258 | 3238 | 3197 | 3176 | 3115 | Down | Sell |
| BAJFINANCE | 1810 | 1851 | 1831 | 1821 | 1811 | 1801 | 1791 | 1772 | Down | Sell |
| BHARTIARTL | 548 | 578 | 560 | 554 | 542 | 536 | 524 | 506 | Up | Buy |
| BOSCHLTD | 21000 | 21502 | 21261 | 21130 | 21020 | 20889 | 20779 | 20538 | Down | Sell |
| BPCL | 544 | 564 | 553 | 549 | 542 | 538 | 531 | 520 | Up | Buy |
| CIPLA | 633 | 669 | 651 | 642 | 634 | 624 | 616 | 598 | Down | Sell |
| COALINDIA | 291 | 305 | 297 | 294 | 289 | 286 | 282 | 274 | Up | Buy |
| DRREDDY | 2405 | 2571 | 2486 | 2445 | 2400 | 2359 | 2314 | 2228 | Up | Buy |
| EICHERMOT | 31153 | 31966 | 31574 | 31363 | 31182 | 30971 | 30789 | 30397 | Down | Sell |
| GAIL | 470 | 494 | 483 | 477 | 473 | 466 | 462 | 451 | Down | Sell |
| HCLTECH | 858 | 891 | 872 | 865 | 853 | 846 | 834 | 815 | Up | Buy |
| HDFC | 1761 | 1811 | 1785 | 1773 | 1758 | 1746 | 1731 | 1704 | Up | Buy |
| HDFCBANK | 1820 | 1848 | 1835 | 1828 | 1822 | 1815 | 1809 | 1797 | Down | Sell |
| HEROMOTOCO | 3721 | 3930 | 3838 | 3780 | 3746 | 3688 | 3655 | 3563 | Down | Sell |
| HINDALCO | 272 | 291 | 281 | 277 | 272 | 267 | 262 | 252 | Up | Buy |
| HINDPETRO | 445 | 462 | 454 | 449 | 446 | 442 | 438 | 431 | Down | Sell |
| HINDUNILVR | 1242 | 1293 | 1270 | 1256 | 1247 | 1233 | 1224 | 1201 | Down | Sell |
| IBULHSGFIN | 1230 | 1285 | 1260 | 1245 | 1236 | 1221 | 1211 | 1187 | Down | Sell |
| ICICIBANK | 316 | 334 | 325 | 321 | 316 | 312 | 307 | 298 | Up | Buy |
| INDUSINDBK | 1627 | 1685 | 1659 | 1643 | 1634 | 1618 | 1608 | 1583 | Down | Sell |
| INFRADEL | 418 | 447 | 434 | 426 | 421 | 413 | 408 | 394 | Down | Sell |
| INFY | 923 | 935 | 929 | 926 | 923 | 920 | 917 | 911 | Up | Buy |
| IOC | 415 | 431 | 424 | 419 | 417 | 412 | 410 | 403 | Down | Sell |
| ITC | 266 | 276 | 272 | 269 | 267 | 264 | 262 | 258 | Down | Sell |
| KOTAKBANK | 1018 | 1055 | 1039 | 1028 | 1023 | 1012 | 1007 | 991 | Down | Sell |
| LT | 1210 | 1235 | 1222 | 1216 | 1210 | 1204 | 1198 | 1186 | Up | Buy |
| LUPIN | 1061 | 1119 | 1086 | 1073 | 1053 | 1040 | 1020 | 987 | Up | Buy |
| M&M | 1336 | 1376 | 1357 | 1347 | 1339 | 1328 | 1320 | 1302 | Down | Sell |
| MARUTI | 8228 | 8380 | 8307 | 8267 | 8234 | 8194 | 8161 | 8088 | Down | Sell |
| NTPC | 180 | 187 | 183 | 182 | 179 | 178 | 175 | 171 | Up | Buy |
| ONGC | 188 | 199 | 194 | 191 | 189 | 187 | 185 | 180 | Down | Sell |
| POWERGRID | 216 | 224 | 219 | 218 | 215 | 213 | 210 | 206 | Up | Buy |
| RELIANCE | 947 | 974 | 961 | 954 | 949 | 942 | 937 | 925 | Down | Sell |
| SBIN | 314 | 336 | 327 | 320 | 317 | 311 | 307 | 298 | Down | Sell |
| SUNPHARMA | 564 | 611 | 586 | 575 | 561 | 550 | 537 | 512 | Up | Buy |
| TATAMOTORS | 436 | 456 | 446 | 441 | 435 | 430 | 425 | 414 | Up | Buy |
| TATASTEEL | 706 | 727 | 716 | 711 | 704 | 699 | 693 | 681 | Up | Buy |
| TCS | 2623 | 2769 | 2702 | 2662 | 2635 | 2595 | 2567 | 2500 | Down | Sell |
| TECHM | 468 | 512 | 491 | 479 | 470 | 458 | 449 | 428 | Down | Sell |
| ULTRACEMCO | 4399 | 4542 | 4476 | 4438 | 4410 | 4372 | 4345 | 4279 | Down | Sell |
| UPL | 779 | 817 | 800 | 790 | 784 | 773 | 767 | 750 | Down | Sell |
| VEDL | 341 | 355 | 348 | 344 | 341 | 338 | 334 | 327 | Down | Sell |
| WIPRO | 294 | 300 | 297 | 295 | 294 | 293 | 291 | 289 | Down | Sell |
| YESBANK | 320 | 332 | 326 | 323 | 321 | 318 | 315 | 309 | Down | Sell |
| ZEEL | 528 | 551 | 540 | 534 | 530 | 524 | 519 | 509 | Down | Sell |

Contact Us

www.choicebroking.in

Kkunal Parar

Sr. Research Associate

kkunal.parar@choiceindia.com

Janhvee Mishra

Research Associate

janhvee.mishra@choiceindia.com

Vikas Chaudhari

Research Associate

vikas.chaudhari@choiceindia.com

Rupak De

Research Associate

rupak.de@choiceindia.com



customercare@choiceindia.com



www.choicebroking.in



Disclaimer

This is solely for information of clients of Choice Broking and does not constitute to be an investment advice. It is also not intended as an offer or solicitation for the purchase and sale of any financial instruments. Any action taken by you on the basis of the information contained herein is your responsibility alone and Choice Broking its subsidiaries or its employees or associates will not be liable in any manner for the consequences of such action taken by you. We have exercised due diligence in checking the correctness and authenticity of the information contained in this recommendation, but Choice Broking or any of its subsidiaries or associates or employees shall not be in any way responsible for any loss or damage that may arise to any person from any inadvertent error in the information contained in this recommendation or any action taken on basis of this information. Technical analysis studies market psychology, price patterns and volume levels. It is used to forecast future price and market movements. Technical analysis is complementary to fundamental analysis and news sources. The recommendations issued herewith might be contrary to recommendations issued by Choice Broking in the company research undertaken as the recommendations stated in this report is derived purely from technical analysis. Choice Broking has based this document on information obtained from sources it believes to be reliable but which it has not independently verified; Choice Broking makes no guarantee, representation or warranty and accepts no responsibility or liability as to its accuracy or completeness. The opinions contained within the report are based upon publicly available information at the time of publication and are subject to change without notice. The information and any disclosures provided herein are in summary form and have been prepared for informational purposes. The recommendations and suggested price levels are intended purely for trading purposes. The recommendations are valid for the day of the report however trading trends and volumes might vary substantially on an intraday basis and the recommendations may be subject to change. The information and any disclosures provided herein may be considered confidential. Any use, distribution, modification, copying, forwarding or disclosure by any person is strictly prohibited. The information and any disclosures provided herein do not constitute a solicitation or offer to purchase or sell any security or other financial product or instrument. The current performance may be unaudited. Past performance does not guarantee future returns. There can be no assurance that investments will achieve any targeted rates of return, and there is no guarantee against the loss of your entire investment.

POTENTIAL CONFLICT OF INTEREST DISCLOSURE (as on date of report) Disclosure of interest statement – • Analyst interest of the stock /Instrument(s): - No. • Firm interest of the stock / Instrument (s): - No.