

Equity Bazaar

6th Nov 17



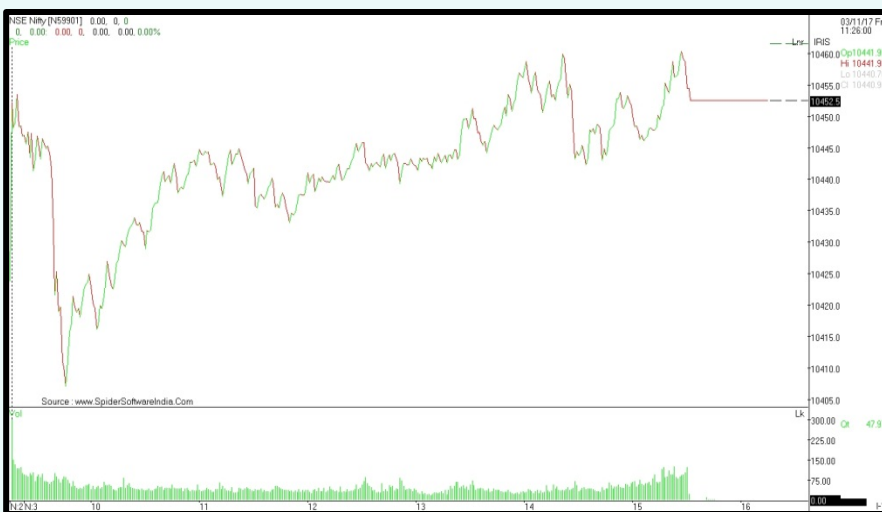
Today, We may witness a negative opening in the Nifty around 10400 level on the back of SGX Nifty and other Asian counters which are trading on a negative note today.

Cumulative foreign direct investment (FDI) equity flows into India reached USD 114.4 billion during the last two financial years of 2015-16 and 2016-17, according to a latest report by global accounting firm KPMG. This is about 40 percent higher than the USD 81.8 billion recorded in the preceding three years, from 2011-12 to 2013-14.

As many as 73 companies are likely to reports their September quarter results including AstraZeneca Pharma, Avadh Sugar, Century Textiles, Greenlam Industries, Gujarat Gas, Indian Bank, Jaiprakash Power Ventures, Just Dial, Piramal Enterprises, REC, Thomas Cook, Torrent Power, Varun Beverages, Welspun Corp, and Westlife Development etc. among others.

Khadim India's initial public offer was subscribed 45 percent on the second day of the bidding on Friday. The initial public offer (IPO) of New India Assurance Company was over-subscribed 1.19 times on the closing day of bidding on Friday.

Nifty Intraday



Indian Markets

SENSEX	33,686	0.33%
NIFTY	10,453	0.27%
SGX Nifty*	10,444	-0.41%

Global Indices

Dow Jones	22,980	0.30%
Nasdaq	6,764	0.73%
FTSE	7,560	0.07%
DAX	13,479	0.28%
Straits Times	3,373	-0.29%
Nikkei 225	22,542	0.01%
Hang Seng	28,282	-1.14%

Commodities

Gold	29,088	-0.54%
Silver	39,048	-1.45%
Natural Gas	194	2.01%
Crude Oil	3,579	1.65%

Currency

Dollar / Rupee	64.55	0.00%
Euro / Rupee	74.96	0.04%
Pound / Rupee	84.41	-0.04%

Volumes Rs.mn

Cash BSE	301,989	497.38
Cash NSE	341,609	0.74

FII Activities Rs.Cr.

Purchase	Sale	Net
7136.23	4,990	2146.73

MF Activities Rs.Cr.

Purchase	Sale	Net
10082.03	7,564	2518.22

*Sources- Bloomberg, Moneycontrol, Zeebusiness, livemint

Equity Bazaar

6th Nov 17



Nifty Outlook



	L1	L2	L3
R	10474	10497	10532
S	10416	10381	10358

Moving Averages	
21 DEMA	10239
100 DEMA	9904
200 DEMA	9558

- The Nifty index made a fresh record closing high of 10452.50 gaining 28.70 points on last day of the week.
- On an hourly chart, the index has been trading with the support of its 20 hours exponential moving average, placed at 10428 level which shows continuation of a positive trend.
- On a daily chart, the index has closed the last session of the week with forming a Dragonfly Doji candlestick, it seems that the index may continue the northward move.
- A daily momentum indicator RSI reading is at 71.12, trending in an overbought zone which points out for a positive breath in the index.
- Based on the ongoing move, we are expecting a higher side resistance level at 10530-10550 while downside support comes at 10380 level.

Bank Nifty Outlook



	L1	L2	L3
R	25765	25881	26066
S	25464	25279	25163

Moving Averages	
21 DEMA	24807
100 DEMA	24053
200 DEMA	22917

- The market breadth was positive, the BankNifty index closed at 25650.70 gaining 223.40 points.
- On an hourly chart, the index has continued to trade with the support of its 20 hours exponential moving average which indicates a bullish sentiments in the counter.
- On a daily chart, the Index has been trading in an uncharted territory with ample volume activity and some large cap Bank's active performance may lead the BankNifty towards new all-time high.
- A daily momentum indicator RSI reading is at 65.95, heading towards the overbought zone which points out for a positive breath in the index.
- Based on the ongoing move, we are expecting a higher side resistance level at 25900-26000 while downside support comes at 25400 level.

Equity Bazaar

6th Nov 17



Symbols	CLOSE	R3	R2	R1	P	S1	S2	S3	Trend	Action
ADANIPTS	435	452	444	439	436	431	428	420	Down	Sell
AMBUJACEM	283	289	286	284	282	281	279	275	Up	Buy
ASIANPAINT	1172	1206	1190	1181	1174	1165	1158	1143	Down	Sell
AUROPHARMA	788	835	812	800	788	776	765	741	Down	Sell
AXISBANK	540	563	552	546	540	534	528	517	Up	Buy
BAJAJ-AUTO	3223	3315	3272	3248	3229	3205	3186	3143	Down	Sell
BAJFINANCE	1834	1902	1866	1850	1829	1813	1792	1756	Up	Buy
BHARTIARTL	540	602	575	557	547	530	520	492	Down	Sell
BOSCHLTD	21072	21587	21329	21200	21071	20942	20813	20555	Up	Buy
BPCL	533	561	548	541	536	528	524	511	Down	Sell
CIPLA	640	676	658	649	639	630	621	602	Up	Buy
COALINDIA	287	302	295	291	288	284	281	274	Down	Sell
DRREDDY	2427	2537	2480	2454	2423	2397	2366	2310	Up	Buy
EICHERMOT	31230	32588	31861	31546	31134	30819	30407	29680	Up	Buy
GAIL	464	492	479	471	467	459	454	442	Down	Sell
HCLTECH	848	881	866	857	851	842	836	821	Down	Sell
HDFC	1772	1834	1804	1788	1774	1758	1744	1714	Down	Sell
HDFCBANK	1830	1867	1849	1839	1831	1821	1812	1794	Down	Sell
HEROMOTOCO	3686	3837	3769	3728	3701	3660	3634	3566	Down	Sell
HINDALCO	269	295	283	276	271	264	259	247	Down	Sell
HINDPETRO	445	460	452	449	444	441	437	429	Up	Buy
HINDUNILVR	1240	1265	1252	1246	1239	1233	1226	1213	Up	Buy
IBULHSGFIN	1217	1267	1245	1231	1224	1209	1202	1180	Down	Sell
ICICIBANK	315	325	321	318	316	313	311	307	Down	Sell
INDUSINDBK	1670	1764	1711	1691	1659	1638	1606	1553	Up	Buy
INFRADEL	414	434	425	419	416	410	406	397	Down	Sell
INFY	927	950	938	932	925	919	912	899	Up	Buy
IOC	413	426	420	416	414	410	408	401	Down	Sell
ITC	266	272	269	267	266	264	263	260	Down	Sell
KOTAKBANK	1015	1054	1036	1025	1017	1006	998	979	Down	Sell
LT	1246	1307	1271	1258	1235	1222	1199	1162	Up	Buy
LUPIN	1047	1109	1081	1064	1052	1035	1024	996	Down	Sell
M&M	1332	1377	1355	1343	1332	1321	1309	1286	Up	Buy
MARUTI	8220	8348	8281	8250	8213	8182	8145	8077	Up	Buy
NTPC	181	191	186	184	181	179	177	172	Down	Sell
ONGC	192	203	196	194	190	188	184	177	Up	Buy
POWERGRID	211	235	224	217	214	207	203	192	Down	Sell
RELIANCE	946	979	963	955	947	939	932	916	Down	Sell
SBIN	326	352	337	331	322	317	307	292	Up	Buy
SUNPHARMA	551	592	574	563	556	545	539	521	Down	Sell
TATAMOTORS	449	477	460	454	444	438	427	410	Up	Buy
TATASTEEL	709	727	718	713	708	704	699	690	Up	Buy
TCS	2622	2688	2654	2638	2621	2604	2587	2553	Up	Buy
TECHM	462	491	478	470	466	457	453	440	Down	Sell
ULTRACEMCO	4400	4523	4457	4429	4391	4363	4325	4259	Up	Buy
UPL	776	804	791	783	778	770	765	751	Down	Sell
VEDL	338	362	351	345	340	334	329	317	Down	Sell
WIPRO	294	299	297	296	295	293	292	290	Down	Sell
YESBANK	326	338	332	329	325	323	319	313	Up	Buy
ZEEL	537	561	548	543	535	529	522	509	Up	Buy

Contact Us

www.choicebroking.in

Kkunal Parar

Sr. Research Associate

kkunal.parar@choiceindia.com

Janhvee Mishra

Research Associate

janhvee.mishra@choiceindia.com

Vikas Chaudhari

Research Associate

vikas.chaudhari@choiceindia.com

Rupak De

Research Associate

rupak.de@choiceindia.com



customercare@choiceindia.com



www.choicebroking.in



Disclaimer

This is solely for information of clients of Choice Broking and does not constitute to be an investment advice. It is also not intended as an offer or solicitation for the purchase and sale of any financial instruments. Any action taken by you on the basis of the information contained herein is your responsibility alone and Choice Broking its subsidiaries or its employees or associates will not be liable in any manner for the consequences of such action taken by you. We have exercised due diligence in checking the correctness and authenticity of the information contained in this recommendation, but Choice Broking or any of its subsidiaries or associates or employees shall not be in any way responsible for any loss or damage that may arise to any person from any inadvertent error in the information contained in this recommendation or any action taken on basis of this information. Technical analysis studies market psychology, price patterns and volume levels. It is used to forecast future price and market movements. Technical analysis is complementary to fundamental analysis and news sources. The recommendations issued herewith might be contrary to recommendations issued by Choice Broking in the company research undertaken as the recommendations stated in this report is derived purely from technical analysis. Choice Broking has based this document on information obtained from sources it believes to be reliable but which it has not independently verified; Choice Broking makes no guarantee, representation or warranty and accepts no responsibility or liability as to its accuracy or completeness. The opinions contained within the report are based upon publicly available information at the time of publication and are subject to change without notice. The information and any disclosures provided herein are in summary form and have been prepared for informational purposes. The recommendations and suggested price levels are intended purely for trading purposes. The recommendations are valid for the day of the report however trading trends and volumes might vary substantially on an intraday basis and the recommendations may be subject to change. The information and any disclosures provided herein may be considered confidential. Any use, distribution, modification, copying, forwarding or disclosure by any person is strictly prohibited. The information and any disclosures provided herein do not constitute a solicitation or offer to purchase or sell any security or other financial product or instrument. The current performance may be unaudited. Past performance does not guarantee future returns. There can be no assurance that investments will achieve any targeted rates of return, and there is no guarantee against the loss of your entire investment.

POTENTIAL CONFLICT OF INTEREST DISCLOSURE (as on date of report) Disclosure of interest statement – • Analyst interest of the stock /Instrument(s): - No. • Firm interest of the stock / Instrument (s): - No.