

# Equity Bazaar

11th May 17



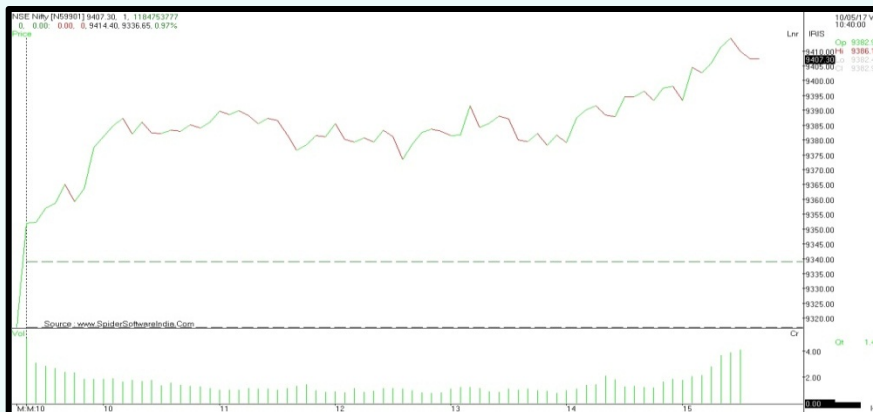
Today, We may witness a mild positive opening in the Nifty around 9340 level on back of SGX Nifty and other Asian counters which are trading on a positive note today.

Leading bourse NSE has announced changes in five indices including Alpha 50, High Beta 50 and Low Volatility 50 as part of its quarterly review. Nifty 100 Low Volatility 30 and Nifty Midcap Liquid 15 index will also see changes. The changes will become effective from May 26, NSE. Under the changes, Bank of India, Dewan Housing Finance Corporation, Federal Bank, Infibeam Incorporation, Lakshmi Vilas Bank, JM Financial, MRF, Natco Pharma, Sun TV Network, Mangalore Refinery & Petrochemicals and Rural Electrification Corporation will be included in Nifty Alpha 50 index.

Banks can initiate loan recovery proceedings without waiting for an account to be formally classified as non-performing, as the latest amendments to banking rules allow for faster resolution of their bad debt problem.

As much as 46 companies are scheduled to report their results for the quarter ended March 31 on Thursday which include names like Arvind, Asian Paints, Force Motors, Glenmark Pharma, HCL Technologies, ICRA, MT Educare, Aarti Industries, Glaxo Consumer, Granules India, Gujarat Pipavav, ITD Cementation and Kirloskar Industries.

## Nifty Intraday



## Indian Markets

SENSEX	30,248	1.04%
NIFTY	9,407	0.96%
SGX Nifty*	9,447	0.30%

## Global Indices

Dow Jones	20,900	-0.44%
Nasdaq	6,129	0.14%
FTSE	7,385	0.58%
DAX	12,757	0.07%
Straits Times	3,270	0.62%
Nikkei 225	19,929	0.15%
Hang Seng	25,147	0.52%

## Commodities

Gold	27,996	0.09%
Silver	37,952	0.43%
Natural Gas	213	1.73%
Crude Oil	3,083	3.70%

## Currency

Dollar / Rupee	64.62	0.00%
Euro / Rupee	70.17	-0.01%
Pound / Rupee	83.48	-0.08%

## Volumes Rs.mn

Cash BSE	35,274	-7.04
Cash NSE	242,983	3.11

## FII Activities Rs.Cr.

Purchase	Sale	Net
4568.17	4,109	458.69

## MF Activities Rs.Cr.

Purchase	Sale	Net
9515.93	8,243	1272.71

\*Sources- Bloomberg, Moneycontrol, Zeebusiness, livemint

# Equity Bazaar

11th May 17



## Nifty Outlook



	L1	L2	L3
R	9435	9464	9513
S	9357	9308	9279

Moving Averages	
21 DEMA	9263
100 DEMA	8914
250 DEMA	8593

- On a daily chart, the Nifty has been trading in an uncharted territory with enough breath which suggests that the Index has shifted its momentum dynamic to a new zone.
- Even the Index has given a breakout of its range bound move and has managed to close above 9370 level.
- Moreover, the Nifty has been trading above its 21 days moving average since last many days which shows that the trend is up.
- A daily momentum indicator RSI reading is at 66.95 level with a positive crossover which points out for a positive breath in the Index.
- Based on the above technical parameters, we are expecting a good upside movement up to the level of 9500 while downside support comes at 9370 level.

## Bank Nifty Outlook



	L1	L2	L3
R	22879	22927	22996
S	22762	22693	22645

Moving Averages	
21 DEMA	22167
100 DEMA	20740
250 DEMA	19498

- On a daily chart, the BankNifty has been trading in an uncharted territory with enough breath which suggests that the Index has shifted its momentum dynamic to a new zone.
- Apart from this, the BankNifty has been trading above its 21 days moving average which is placed at 22101 level which shows that the trend is still up.
- A daily momentum indicator RSI reading is at 78.33 level with a positive crossover which points out for a positive breath until it gives a downside breakout of 70 marks.
- Based on the above technical structure, we are expecting a good upside movement upto the level of 23000-23200 while downside support comes at 22600 level.

# Equity Bazaar

11th May 17



Symbols	CLOSE	R3	R2	R1	P	S1	S2	S3	Trend	Action
ACC	1692	1768	1730	1711	1692	1674	1655	1617	Down	Sell
ADANIPOINTS	351	364	357	354	350	347	343	336	Up	Buy
AMBUJACEM	259	269	264	261	258	256	253	248	Up	Buy
ASIANPAINT	1150	1228	1194	1172	1160	1138	1126	1092	Down	Sell
AUROPHARMA	619	660	636	628	613	604	590	567	Up	Buy
AXISBANK	526	547	535	530	523	518	511	499	Up	Buy
BAJAJ-AUTO	2905	2992	2942	2923	2891	2872	2840	2789	Up	Buy
BANKBARODA	186	193	190	188	186	184	183	180	Down	Sell
BHARTIARTL	373	451	407	390	363	346	319	275	Up	Buy
BOSCHLTD	23200	24197	23749	23474	23300	23025	22851	22402	Down	Sell
BPCL	729	746	736	733	727	723	717	707	Up	Buy
CIPLA	562	581	570	566	559	554	547	536	Up	Buy
COALINDIA	279	283	281	280	278	277	276	274	Up	Buy
DRREDDY	2597	2687	2643	2620	2600	2576	2556	2512	Down	Sell
EICHERMOT	27900	29754	28677	28289	27600	27212	26524	25447	Up	Buy
GAIL	418	432	426	422	419	415	413	406	Down	Sell
GRASIM	1167	1221	1194	1181	1167	1154	1141	1114	Down	Sell
HCLTECH	841	869	856	849	843	836	831	818	Down	Sell
HDFC	1571	1654	1606	1588	1558	1540	1510	1462	Up	Buy
HDFCBANK	1554	1585	1567	1560	1549	1542	1531	1513	Up	Buy
HEROMOTOCO	3330	3450	3380	3355	3310	3285	3240	3170	Up	Buy
HINDALCO	187	193	190	189	187	186	184	181	Up	Buy
HINDUNILVR	995	1073	1028	1011	983	966	938	893	Up	Buy
IBULHSGFIN	1086	1127	1106	1096	1085	1074	1063	1042	Up	Buy
ICICIBANK	299	310	305	302	300	297	294	289	Down	Sell
INDUSINDBK	1432	1460	1444	1438	1429	1423	1413	1397	Up	Buy
INFRATEL	366	383	374	370	365	361	356	347	Up	Buy
INFY	945	970	957	951	944	938	931	918	Up	Buy
IOC	439	458	449	444	440	435	431	422	Down	Sell
ITC	275	281	278	276	274	272	270	267	Up	Buy
KOTAKBANK	929	961	942	935	923	917	905	886	Up	Buy
LT	1742	1814	1780	1761	1746	1727	1712	1678	Down	Sell
LUPIN	1259	1304	1283	1271	1261	1250	1240	1219	Down	Sell
M&M	1374	1431	1399	1386	1367	1355	1336	1304	Up	Buy
MARUTI	6747	6948	6830	6789	6712	6670	6594	6476	Up	Buy
NTPC	162	166	164	163	162	161	160	159	Up	Buy
ONGC	188	193	190	189	187	186	184	182	Up	Buy
POWERGRID	210	214	212	211	210	209	208	206	Down	Sell
RELIANCE	1359	1417	1384	1372	1351	1339	1318	1285	Up	Buy
SBIN	295	306	300	298	295	293	290	285	Down	Sell
SUNPHARMA	641	660	651	646	641	636	632	623	Down	Sell
TATAMOTORS	432	448	439	435	430	426	421	412	Up	Buy
TATAMTRDVR	264	274	269	266	264	261	258	253	Up	Buy
TATAPOWER	82	87	84	83	82	81	80	78	Down	Sell
TATASTEEL	438	447	442	440	437	435	431	426	Up	Buy
TCS	2336	2416	2376	2356	2336	2316	2296	2256	Down	Sell
TECHM	430	445	438	434	431	427	424	416	Down	Sell
ULTRACEMCO	4365	4653	4518	4442	4384	4307	4249	4115	Down	Sell
WIPRO	500	526	514	507	503	496	491	480	Down	Sell
YESBANK	1599	1661	1630	1615	1599	1584	1569	1538	Down	Sell
ZEEL	520	565	539	529	513	503	487	461	Up	Buy

# Equity Bazaar

11th May 17



## Contact Us

[www.choicebroking.in](http://www.choicebroking.in)

**Kkunal Parar**

*Sr. Research Associate*

kkunal.parar@choiceindia.com

**Kapil Shah**

*Research Associate*

kapil.shah@choiceindia.com

**Vikas Chaudhari**

*Research Associate*

vikas.chaudhari@choiceindia.com

**Amit Pathania**

*Research Associate*

amit.pathania@choiceindia.com



[customercare@choiceindia.com](mailto:customercare@choiceindia.com)



[www.choicebroking.in](http://www.choicebroking.in)



## Disclaimer

This is solely for information of clients of Choice Broking and does not constitute to be an investment advice. It is also not intended as an offer or solicitation for the purchase and sale of any financial instruments. Any action taken by you on the basis of the information contained herein is your responsibility alone and Choice Broking its subsidiaries or its employees or associates will not be liable in any manner for the consequences of such action taken by you. We have exercised due diligence in checking the correctness and authenticity of the information contained in this recommendation, but Choice Broking or any of its subsidiaries or associates or employees shall not be in any way responsible for any loss or damage that may arise to any person from any inadvertent error in the information contained in this recommendation or any action taken on basis of this information. Technical analysis studies market psychology, price patterns and volume levels. It is used to forecast future price and market movements. Technical analysis is complementary to fundamental analysis and news sources. The recommendations issued herewith might be contrary to recommendations issued by Choice Broking in the company research undertaken as the recommendations stated in this report is derived purely from technical analysis. Choice Broking has based this document on information obtained from sources it believes to be reliable but which it has not independently verified; Choice Broking makes no guarantee, representation or warranty and accepts no responsibility or liability as to its accuracy or completeness. The opinions contained within the report are based upon publicly available information at the time of publication and are subject to change without notice. The information and any disclosures provided herein are in summary form and have been prepared for informational purposes. The recommendations and suggested price levels are intended purely for trading purposes. The recommendations are valid for the day of the report however trading trends and volumes might vary substantially on an intraday basis and the recommendations may be subject to change. The information and any disclosures provided herein may be considered confidential. Any use, distribution, modification, copying, forwarding or disclosure by any person is strictly prohibited. The information and any disclosures provided herein do not constitute a solicitation or offer to purchase or sell any security or other financial product or instrument. The current performance may be unaudited. Past performance does not guarantee future returns. There can be no assurance that investments will achieve any targeted rates of return, and there is no guarantee against the loss of your entire investment.

POTENTIAL CONFLICT OF INTEREST DISCLOSURE (as on date of report) Disclosure of interest statement – • Analyst interest of the stock /Instrument(s): - No. • Firm interest of the stock / Instrument (s): - No.