

# Equity Bazaar

17th May 17



Today, We may witness a flat opening in the Nifty around 9512 level on back of SGX Nifty and other Asian counters which are trading on a flat note today.

Quick Heal Technologies Ltd, the maker of antivirus software, has said detected over 48,000 ransomware attack attempts in India, with West Bengal witnessing the most incidents. Quick Heal has “detected over 48,000 MS-17- 010 Shadow Broker exploit hits responsible for ‘WannaCry ransomware’ outbreak in India”.

The initial public offer of India Grid Trust to raise Rs 2,250 crore will open for bidding from Wednesday. The IPO, the second in infrastructure investment trust (InvIT) segment, will open on May 17 and close on May 19. It commands a price band of Rs 98-100 per unit.

Finance Minister Arun Jaitley on Tuesday launched a portal to ensure tax compliance. The portal [www.cleanmoney.gov.in](http://www.cleanmoney.gov.in) will ensure a tax-friendly environment, Revenue Secretary Hasmukh Adhia told media.

As much as 51 stocks will be reporting their results for the quarter ended March 31 on Wednesday which include names like Allahabad Bank, Bajaj Finance, Dilip Buildcon, Edelweiss Financial Services, HUL, IFB Agro, JSW Steel, NIIT, SRS Finance, United Breweries, UFO Moviez, JK Lakshmi Cements etc. among others.

## Indian Markets

SENSEX	30,512	0.85%
NIFTY	9,512	0.69%
SGX Nifty*	9,515	-0.02%

## Global Indices

Dow Jones	20,965	0.19%
Nasdaq	6,170	0.33%
FTSE	7,522	0.90%
DAX	12,805	-0.02%
Straits Times	3,216	-0.37%
Nikkei 225	19,822	-0.49%
Hang Seng	25,294	-0.17%

## Commodities

Gold	28,094	0.36%
Silver	38,744	0.62%
Natural Gas	206	-4.22%
Crude Oil	3,123	-0.83%

## Currency

Dollar / Rupee	64.08	0.03%
Euro / Rupee	71.16	0.28%
Pound / Rupee	82.76	0.07%

## Volumes Rs.mn

Cash BSE	49,859	43.61
Cash NSE	248,737	8.54

## FII Activities Rs.Cr.

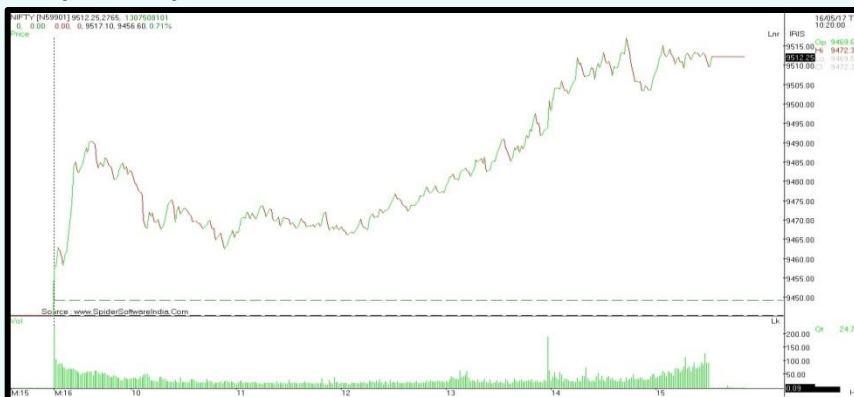
Purchase	Sale	Net
8274.81	5,426	2848.35

## MF Activities Rs.Cr.

Purchase	Sale	Net
9260.4	9,775	-514.3

\*Sources- Bloomberg, Moneycontrol, Zeebusiness, livemint

## Nifty Intraday



# Equity Bazaar

17th May 17



## Nifty Outlook



	L1	L2	L3
R	9534	9556	9595
S	9473	9434	9412

Moving Averages	
21 DEMA	9322
100 DEMA	8955
250 DEMA	8705

- On a daily chart, the Nifty has been trading in an uncharted territory with enough breath which suggests that the Index has shifted its momentum dynamic to a new zone.
- Moreover, Nifty has been trading above its 21 days moving average since last many days which shows that the trend is up.
- On a daily chart, momentum indicator RSI is sustaining above its average line which indicates strength in the trend.
- Based on the above technical parameters, we are expecting a upside movement upto the level of 9550-9600, while downside support comes at 9450 level.

## Bank Nifty Outlook



	L1	L2	L3
R	23006	23083	23223
S	22789	22649	22572

Moving Averages	
21 DEMA	22373
100 DEMA	20900
250 DEMA	19937

- On a daily chart, the BankNifty gave a gap up opening and closed near its all-time high level at 22928 gaining 107 points.
- Apart from this, the BankNifty has been trading above its 21 days moving average which is placed at 22373 level which shows that near to medium term trend is up.
- On a daily chart, momentum indicator RSI has given the breakout of its falling trend line at 68.40 and RSI has retested its falling trend line at 67.80 levels which indicate the possibilities of further upside momentum in the prices.
- Based on the above technical structure, we are expecting a good upside movement upto the level of 23200-23500 while downside support comes at 22700 level.

# Equity Bazaar

17th May 17



Symbols	CLOSE	R3	R2	R1	P	S1	S2	S3	Trend	Action
ACC	1730	1832	1775	1752	1718	1695	1661	1604	Up	Buy
ADANIPTS	354	368	361	357	354	350	347	340	Down	Sell
AMBUJACEM	260	269	265	262	260	258	256	252	Down	Sell
ASIANPAINT	1144	1181	1161	1152	1141	1132	1121	1101	Up	Buy
AUROPHARMA	614	629	622	618	615	611	607	600	Down	Sell
AXISBANK	502	522	511	507	500	496	489	478	Up	Buy
BAJAJ-AUTO	3016	3128	3066	3041	3004	2979	2942	2880	Up	Buy
BANKBARODA	194	209	200	197	192	188	183	174	Up	Buy
BHARTIARTL	373	396	384	379	372	366	360	348	Up	Buy
BOSCHLTD	24500	26216	25342	24921	24469	24047	23595	22721	Up	Buy
BPCL	733	754	742	738	730	726	718	706	Up	Buy
CIPLA	566	579	573	569	567	563	561	555	Down	Sell
COALINDIA	277	283	279	278	276	275	273	270	Up	Buy
DRREDDY	2718	2801	2757	2737	2714	2694	2671	2628	Up	Buy
EICHERMOT	29366	30472	29842	29604	29212	28974	28582	27952	Up	Buy
GAIL	411	424	418	415	412	409	407	401	Down	Sell
GRASIM	1165	1213	1191	1178	1168	1155	1145	1122	Down	Sell
HCLTECH	849	867	859	854	851	846	843	835	Down	Sell
HDFC	1568	1594	1579	1573	1564	1558	1549	1534	Up	Buy
HDFCBANK	1562	1585	1571	1566	1557	1553	1544	1530	Up	Buy
HEROMOTOCO	3623	3863	3723	3673	3582	3532	3441	3301	Up	Buy
HINDALCO	197	204	200	199	197	195	194	190	Down	Sell
HINDUNILVR	1000	1036	1015	1007	995	987	974	954	Up	Buy
IBULHSGFIN	1051	1106	1080	1066	1054	1040	1029	1003	Down	Sell
ICICIBANK	303	313	308	305	303	301	298	294	Down	Sell
INDUSINDBK	1438	1489	1459	1449	1430	1419	1400	1370	Up	Buy
INFRATEL	376	397	386	381	376	370	365	354	Up	Buy
INFY	956	981	968	962	954	949	941	928	Up	Buy
IOC	446	463	455	450	447	442	439	431	Down	Sell
ITC	283	294	288	286	282	279	275	269	Up	Buy
KOTAKBANK	957	999	981	969	963	951	945	927	Down	Sell
LT	1741	1780	1760	1750	1739	1729	1718	1697	Up	Buy
LUPIN	1291	1334	1312	1301	1289	1279	1267	1245	Up	Buy
M&M	1364	1404	1387	1375	1369	1358	1352	1334	Down	Sell
MARUTI	6968	7220	7073	7021	6925	6873	6778	6630	Up	Buy
NTPC	160	163	161	160	160	159	158	157	Down	Sell
ONGC	185	192	189	187	186	184	183	180	Down	Sell
POWERGRID	208	211	209	208	207	207	206	204	Up	Buy
RELIANCE	1356	1430	1394	1375	1358	1339	1322	1286	Down	Sell
SBIN	308	323	314	311	305	302	296	287	Up	Buy
SUNPHARMA	650	669	660	655	652	646	643	634	Down	Sell
TATAMOTORS	437	451	444	440	436	433	429	422	Up	Buy
TATAMTRDVR	267	274	270	269	266	265	263	259	Up	Buy
TATAPOWER	84	89	87	85	84	83	82	79	Down	Sell
TATASTEEL	457	476	467	462	459	453	450	441	Down	Sell
TCS	2425	2534	2473	2449	2411	2387	2350	2288	Up	Buy
TECHM	444	456	450	447	444	441	438	432	Down	Sell
ULTRACEMCO	4488	4667	4577	4533	4488	4444	4399	4310	Down	Sell
WIPRO	516	534	523	519	512	509	502	491	Up	Buy
YESBANK	1477	1546	1514	1495	1482	1463	1450	1418	Down	Sell
ZEEL	521	549	534	528	520	513	505	490	Up	Buy

# Equity Bazaar

17th May 17



## Contact Us

[www.choicebroking.in](http://www.choicebroking.in)

**Kkunal Parar**

*Sr. Research Associate*

kkunal.parar@choiceindia.com

**Kapil Shah**

*Research Associate*

kapil.shah@choiceindia.com

**Vikas Chaudhari**

*Research Associate*

vikas.chaudhari@choiceindia.com

**Amit Pathania**

*Research Associate*

amit.pathania@choiceindia.com



[customercare@choiceindia.com](mailto:customercare@choiceindia.com)



[www.choicebroking.in](http://www.choicebroking.in)



## Disclaimer

This is solely for information of clients of Choice Broking and does not constitute to be an investment advice. It is also not intended as an offer or solicitation for the purchase and sale of any financial instruments. Any action taken by you on the basis of the information contained herein is your responsibility alone and Choice Broking its subsidiaries or its employees or associates will not be liable in any manner for the consequences of such action taken by you. We have exercised due diligence in checking the correctness and authenticity of the information contained in this recommendation, but Choice Broking or any of its subsidiaries or associates or employees shall not be in any way responsible for any loss or damage that may arise to any person from any inadvertent error in the information contained in this recommendation or any action taken on basis of this information. Technical analysis studies market psychology, price patterns and volume levels. It is used to forecast future price and market movements. Technical analysis is complementary to fundamental analysis and news sources. The recommendations issued herewith might be contrary to recommendations issued by Choice Broking in the company research undertaken as the recommendations stated in this report is derived purely from technical analysis. Choice Broking has based this document on information obtained from sources it believes to be reliable but which it has not independently verified; Choice Broking makes no guarantee, representation or warranty and accepts no responsibility or liability as to its accuracy or completeness. The opinions contained within the report are based upon publicly available information at the time of publication and are subject to change without notice. The information and any disclosures provided herein are in summary form and have been prepared for informational purposes. The recommendations and suggested price levels are intended purely for trading purposes. The recommendations are valid for the day of the report however trading trends and volumes might vary substantially on an intraday basis and the recommendations may be subject to change. The information and any disclosures provided herein may be considered confidential. Any use, distribution, modification, copying, forwarding or disclosure by any person is strictly prohibited. The information and any disclosures provided herein do not constitute a solicitation or offer to purchase or sell any security or other financial product or instrument. The current performance may be unaudited. Past performance does not guarantee future returns. There can be no assurance that investments will achieve any targeted rates of return, and there is no guarantee against the loss of your entire investment.

POTENTIAL CONFLICT OF INTEREST DISCLOSURE (as on date of report) Disclosure of interest statement – • Analyst interest of the stock /Instrument(s): - No. • Firm interest of the stock / Instrument (s): - No.