

Equity Bazaar

18th Sept 17



Today, We may witness a positive opening in the Nifty around 10135 level on the back of SGX Nifty and other Asian counters which are trading on a negative note today.

India's exports grew by 10.29 percent, highest in the last four months, to USD 23.81 billion in August, helped mainly by higher growth in petroleum products, engineering and chemicals shipments, government data showed on Friday. Trade deficit widened to USD 11.64 billion in the month under review from USD 7.70 billion in August 2016, due to increase in gold imports, which rose by about 69 percent to USD 1.88 billion in August.

India's forex reserves have now surpassed USD 400 billion. As per RBI, India's forex reserves stood at USD 400.726 billion in the week ended September 8 on account of rise in foreign currency assets. India's Forex reserves have grown over 71 times in the last twenty-six years and is enough to pay for all its imports for the coming ten months.

India's forex reserves have now surpassed USD 400 billion. As per RBI, India's forex reserves stood at USD 400.726 billion in the week ended September 8 on account of rise in foreign currency assets. India's Forex reserves have grown over 71 times in the last twenty-six years and is enough to pay for all its imports for the coming ten months.

Indian Markets

SENSEX	32,273	0.10%
NIFTY	10,085	-0.01%
SGX Nifty*	10,149	0.54%

Global Indices

Dow Jones	22,175	0.39%
Nasdaq	6,448	0.30%
FTSE	7,215	-1.11%
DAX	12,519	-0.17%
Straits Times	3,243	1.02%
Nikkei 225	19,910	0.51%
Hang Seng	28,096	1.03%

Commodities

Gold	29,856	1.00%
Silver	40,814	-0.80%
Natural Gas	194	-1.75%
Crude Oil	3,191	-0.75%

Currency

Dollar / Rupee	64.07	-0.06%
Euro / Rupee	76.53	-0.05%
Pound / Rupee	87.11	0.07%

Volumes Rs.mn

Cash BSE	85,213	31.14
Cash NSE	347,412	25.45

FII Activities Rs.Cr.

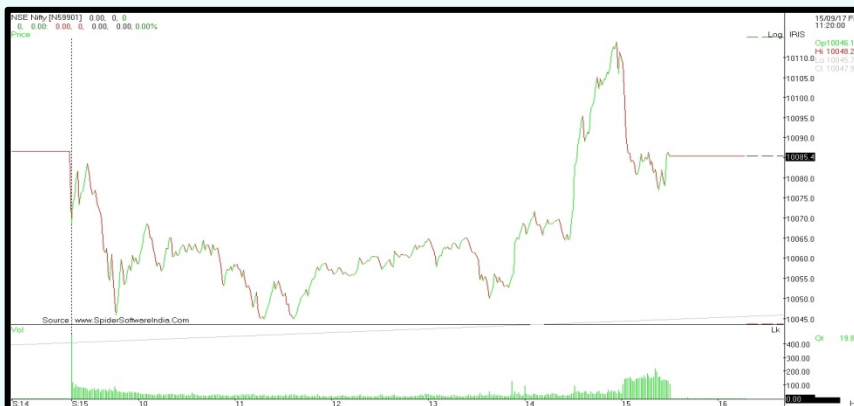
Purchase	Sale	Net
5583.32	6,367	-783.88

MF Activities Rs.Cr.

Purchase	Sale	Net
6930.31	5,602	1328.1

*Sources- Bloomberg, Moneycontrol, Zeebusiness, livemint

Nifty Intraday



Equity Bazaar

18th Sept 17



Nifty Outlook



	L1	L2	L3
R	10119	10153	10191
S	10047	10009	9975

Moving Averages	
21 DEMA	9965
100 DEMA	9684
200 DEMA	9337

- The Nifty index ended the last day of the week on a flat note and has managed to close above the 10050 mark, settled at 10085.40 with losing 1.20 points.
- On an hourly chart, the nifty has opened on a negative note and has given a bounce back move after testing a strong support at horizontal level 10055 from where we had seen last positive move.
- However, the Nifty index has faced resistance of a 61.8% Fibonacci Extension level, placed at 10111.41 which is almost near to today's high of the index.
- A daily momentum indicator RSI reading is at 62.18 level, trending above its average line which points out for a positive breath in the index.
- Based on the above technical parameters, we are expecting a higher side resistance level at 10140 while downside support comes at 10030 level.

Bank Nifty Outlook



	L1	L2	L3
R	24910	24975	25035
S	24785	24725	24660

Moving Averages	
21 DEMA	24496
100 DEMA	23545
200 DEMA	22270

- The market breadth was negative, the BankNifty closed at 24844.30 with losing of 67.95 points.
- On a daily chart, the index has been trading above the 20 days exponential moving average which is a positive sign.
- However, the index has formed a Spinning Top Candlestick pattern which is a bearish reversal sign and it may cause for a correction in the index.
- A daily momentum indicator RSI reading is at 64.78 level, trending above the average line which points out for a positive breath in the index.
- Based on the above technical parameters, we are expecting a higher side resistance level at 25030 while downside support comes at 24700 level.

Equity Bazaar

18th Sept 17



Symbols	CLOSE	R3	R2	R1	P	S1	S2	S3	Trend	Action
ACC	1824	1883	1854	1839	1825	1810	1796	1767	Down	Sell
ADANIPTS	404	419	412	408	406	402	399	393	Down	Sell
AMBUJACEM	285	296	290	288	284	282	278	272	Up	Buy
ASIANPAINT	1247	1288	1265	1256	1241	1233	1218	1194	Up	Buy
AUROPHARMA	756	791	775	766	759	750	743	728	Down	Sell
AXISBANK	518	534	525	521	516	512	507	498	Up	Buy
BAJAJ-AUTO	3030	3258	3124	3077	2989	2942	2855	2720	Up	Buy
BANKBARODA	145	150	147	146	145	144	143	140	Up	Buy
BHARTIARTL	399	418	408	403	398	394	389	379	Up	Buy
BOSCHLTD	21797	22388	22094	21946	21801	21653	21508	21215	Down	Sell
BPCL	499	521	509	504	498	492	486	474	Up	Buy
CIPLA	562	580	571	566	561	557	552	543	Up	Buy
COALINDIA	261	273	266	264	259	257	252	245	Up	Buy
DRREDDY	2208	2306	2262	2235	2218	2191	2174	2130	Down	Sell
EICHERMOT	31950	32799	32349	32150	31900	31700	31450	31001	Up	Buy
GAIL	398	416	408	403	400	395	392	384	Down	Sell
HCLTECH	891	934	909	900	884	875	859	834	Up	Buy
HDFC	1767	1815	1792	1780	1769	1756	1745	1722	Down	Sell
HDFCBANK	1850	1882	1863	1857	1845	1838	1827	1808	Up	Buy
HEROMOTOCO	3888	3969	3929	3909	3889	3869	3849	3809	Down	Sell
HINDALCO	248	263	255	251	246	243	238	230	Up	Buy
HINDUNILVR	1254	1291	1270	1262	1249	1241	1228	1206	Up	Buy
IBULHSGFIN	1269	1309	1285	1277	1262	1254	1238	1214	Up	Buy
ICICIBANK	291	302	297	294	293	290	288	283	Down	Sell
INDUSINDBK	1701	1780	1743	1722	1707	1686	1670	1633	Down	Sell
INFRATEL	377	403	390	383	377	370	363	350	Up	Buy
INFY	909	947	926	917	905	896	884	863	Up	Buy
IOC	416	441	430	423	418	411	406	395	Down	Sell
ITC	269	279	275	272	270	267	265	261	Down	Sell
KOTAKBANK	1005	1033	1019	1012	1005	998	991	976	Up	Buy
LT	1208	1250	1230	1219	1211	1200	1191	1171	Down	Sell
LUPIN	1006	1054	1029	1017	1004	992	979	954	Up	Buy
M&M	1286	1330	1311	1298	1292	1279	1273	1254	Down	Sell
MARUTI	8099	8238	8163	8131	8087	8055	8012	7936	Up	Buy
NTPC	167	170	169	168	167	167	166	165	Down	Sell
ONGC	166	182	173	170	164	161	156	147	Up	Buy
POWERGRID	212	222	217	215	211	209	206	201	Up	Buy
RELIANCE	842	879	861	852	843	834	825	807	Down	Sell
SBIN	272	281	277	274	272	269	267	263	Down	Sell
SUNPHARMA	523	549	535	529	522	515	508	494	Up	Buy
TATAMOTORS	402	416	410	406	403	399	396	389	Down	Sell
TATAMTRDVR	229	239	234	231	229	227	224	220	Down	Sell
TATAPOWER	84	87	85	85	84	84	83	82	Down	Sell
TATASTEEL	677	696	687	682	677	672	667	657	Up	Buy
TCS	2504	2566	2534	2519	2502	2487	2470	2438	Up	Buy
TECHM	444	464	454	449	443	438	433	422	Up	Buy
ULTRACEMCO	4224	4309	4259	4241	4209	4191	4158	4108	Up	Buy
VEDL	320	341	330	325	318	314	307	296	Up	Buy
WIPRO	286	296	291	288	285	283	279	274	Up	Buy
YESBANK	1840	1906	1874	1857	1842	1825	1810	1779	Down	Sell
ZEEL	531	560	545	538	530	522	514	499	Up	Buy

Equity Bazaar

18th Sept 17



Contact Us

www.choicebroking.in

Kkunal Parar

Sr. Research Associate

kkunal.parar@choiceindia.com

Janhvee Mishra

Research Associate

janhvee.mishra@choiceindia.com

Vikas Chaudhari

Research Associate

vikas.chaudhari@choiceindia.com

Rupak De

Research Associate

rupak.de@choiceindia.com



customercare@choiceindia.com



www.choicebroking.in



Disclaimer

This is solely for information of clients of Choice Broking and does not constitute to be an investment advice. It is also not intended as an offer or solicitation for the purchase and sale of any financial instruments. Any action taken by you on the basis of the information contained herein is your responsibility alone and Choice Broking its subsidiaries or its employees or associates will not be liable in any manner for the consequences of such action taken by you. We have exercised due diligence in checking the correctness and authenticity of the information contained in this recommendation, but Choice Broking or any of its subsidiaries or associates or employees shall not be in any way responsible for any loss or damage that may arise to any person from any inadvertent error in the information contained in this recommendation or any action taken on basis of this information. Technical analysis studies market psychology, price patterns and volume levels. It is used to forecast future price and market movements. Technical analysis is complementary to fundamental analysis and news sources. The recommendations issued herewith might be contrary to recommendations issued by Choice Broking in the company research undertaken as the recommendations stated in this report is derived purely from technical analysis. Choice Broking has based this document on information obtained from sources it believes to be reliable but which it has not independently verified; Choice Broking makes no guarantee, representation or warranty and accepts no responsibility or liability as to its accuracy or completeness. The opinions contained within the report are based upon publicly available information at the time of publication and are subject to change without notice. The information and any disclosures provided herein are in summary form and have been prepared for informational purposes. The recommendations and suggested price levels are intended purely for trading purposes. The recommendations are valid for the day of the report however trading trends and volumes might vary substantially on an intraday basis and the recommendations may be subject to change. The information and any disclosures provided herein may be considered confidential. Any use, distribution, modification, copying, forwarding or disclosure by any person is strictly prohibited. The information and any disclosures provided herein do not constitute a solicitation or offer to purchase or sell any security or other financial product or instrument. The current performance may be unaudited. Past performance does not guarantee future returns. There can be no assurance that investments will achieve any targeted rates of return, and there is no guarantee against the loss of your entire investment.

POTENTIAL CONFLICT OF INTEREST DISCLOSURE (as on date of report) Disclosure of interest statement – • Analyst interest of the stock /Instrument(s): - No. • Firm interest of the stock / Instrument (s): - No.