

# Equity Bazaar

22nd June 17



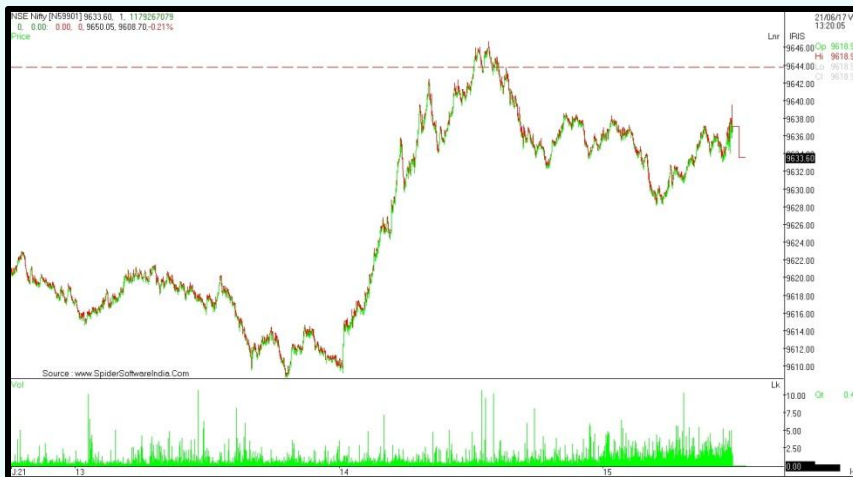
Today, We may witness a flat opening in the Nifty around 9643 level on the back of SGX Nifty and other Asian counters which are trading on a flat note today.

The Reserve Bank of India's monetary policy committee wants more evidence that inflation has sustainably fallen below its target before deciding whether to lower interest rates, minutes from its last meeting showed on Wednesday. The RBI voted 5-1 to keep the repo rate at 6.25 percent earlier this month, but issued a slightly less hawkish statement after consumer inflation eased to 2.99 percent in April, below its 4 percent target.

The Securities and Exchange Board of India (SEBI) today said that it would ease the takeover process for banks under the recently-introduced bankruptcy code from its strict share pricing rules, adding that such transactions will be governed only by RBI regulations.

The initial public offering of Central Depository Services (CDSL) has received tremendous response from all types of investors, with getting more than Rs 62,929 crore worth of bids against issue size of Rs 369.9 crore.

## Nifty Intraday



## Indian Markets

SENSEX	31,283	-0.04%
NIFTY	9,633	-0.21%
SGX Nifty*	9,666	0.04%

## Global Indices

Dow Jones	21,413	-0.27%
Nasdaq	6,234	0.74%
FTSE	7,448	-0.33%
DAX	12,774	-0.32%
Straits Times	3,211	0.28%
Nikkei 225	20,118	-0.10%
Hang Seng	25,694	0.00%

## Commodities

Gold	28,577	0.18%
Silver	37,977	-0.23%
Natural Gas	187	-0.86%
Crude Oil	2,741	-2.63%

## Currency

Dollar / Rupee	64.52	0.03%
Euro / Rupee	72.05	0.00%
Pound / Rupee	81.73	-0.01%

## Volumes Rs.mn

Cash BSE	75,104	151.26
Cash NSE	216,330	-2.17

## FII Activities Rs.Cr.

Purchase	Sale	Net
6395.46	6,143	252.03

## MF Activities Rs.Cr.

Purchase	Sale	Net
8432.32	5,115	3317.3

\*Sources- Bloomberg, M moneycontrol, Zeebusiness, livemint

# Equity Bazaar

22nd June 17



## Nifty Outlook



	L1	L2	L3
R	9653	9672	9695
S	9611	9588	9569

Moving Averages	
21 DEMA	9588
100 DEMA	9211
250 DEMA	8800

- On the daily chart, the Nifty descended during the first half trading session but gained pace during the final hours.
- A momentum indicator RSI has given breakout of downward sloping trend line, which indicates further upside potential in the index.
- On an hourly chart, the nifty took support of its descending trend line 9608 level which suggests that Nifty can give further upside movement.
- Based on the above technical parameters, we are expecting an upside movement upto the level of 9700-9750, while downside support comes at 9600 level.

## Bank Nifty Outlook



	L1	L2	L3
R	23775	23843	23925
S	23625	23543	23475

Moving Averages	
21 DEMA	23378
100 DEMA	21886
250 DEMA	20298

- The Bank Nifty regained its momentum during the second half trading session closing at 23708.
- On an hourly chart, the nifty took support of its rising trend line which suggests positive breath in the index.
- A momentum indicator RSI has taken support of its rising trend line at 59.30 level, which indicates positive potential in the index.
- Based on the above technical structure, we are expecting an upside move upto the level of 23900-24000, while downside support comes at 23500 level.

# Equity Bazaar

22nd June 17



Symbols	CLOSE	R3	R2	R1	P	S1	S2	S3	Trend	Action
ACC	1656	1698	1675	1665	1652	1642	1629	1606	Up	Buy
ADANIPTS	370	391	381	376	371	366	361	351	Down	Sell
AMBUJACEM	241	248	244	242	240	238	236	232	Up	Buy
ASIANPAINT	1157	1177	1166	1161	1156	1151	1145	1135	Up	Buy
AUROPHARMA	655	681	668	662	655	648	642	629	Up	Buy
AXISBANK	507	520	515	511	509	505	503	497	Down	Sell
BAJAJ-AUTO	2816	2887	2849	2832	2811	2795	2774	2736	Up	Buy
BANKBARODA	167	175	171	169	168	165	164	161	Down	Sell
BHARTIARTL	368	374	370	369	367	365	363	359	Up	Buy
BOSCHLTD	24201	25679	25024	24613	24369	23958	23714	23059	Down	Sell
BPCL	654	689	673	664	657	648	642	626	Down	Sell
CIPLA	540	562	551	546	540	535	530	519	Down	Sell
COALINDIA	251	259	255	253	251	249	248	244	Down	Sell
DRREDDY	2686	2757	2718	2702	2679	2663	2640	2600	Up	Buy
EICHERMOT	27495	28975	28285	27890	27595	27200	26905	26215	Down	Sell
GAIL	368	388	379	373	370	365	361	352	Down	Sell
HCLTECH	843	877	861	852	845	836	829	813	Down	Sell
HDFC	1626	1672	1649	1638	1627	1615	1604	1582	Down	Sell
HDFCBANK	1697	1736	1714	1706	1693	1684	1671	1649	Up	Buy
HEROMOTOCO	3765	3885	3831	3798	3777	3744	3723	3669	Down	Sell
HINDALCO	197	207	202	200	198	195	193	188	Down	Sell
HINDUNILVR	1127	1187	1152	1139	1117	1104	1082	1047	Up	Buy
IBULHSGFIN	1123	1151	1137	1130	1123	1116	1109	1094	Down	Sell
ICICIBANK	291	297	294	293	291	289	288	285	Down	Sell
INDUSINDBK	1493	1544	1521	1507	1498	1484	1475	1452	Down	Sell
INFRADEL	371	388	381	376	373	368	366	358	Down	Sell
INFY	949	970	957	953	945	940	932	919	Up	Buy
IOC	408	420	415	411	409	406	404	399	Down	Sell
ITC	309	317	313	311	309	307	305	302	Up	Buy
KOTAKBANK	992	1020	1004	998	989	982	973	957	Up	Buy
LT	1753	1824	1793	1773	1762	1742	1731	1700	Down	Sell
LUPIN	1094	1144	1121	1108	1098	1085	1075	1052	Down	Sell
M&M	1383	1415	1401	1392	1386	1378	1372	1358	Down	Sell
MARUTI	7279	7501	7370	7325	7239	7193	7108	6977	Up	Buy
NTPC	160	166	163	162	160	158	156	153	Up	Buy
ONGC	165	174	170	167	166	163	162	158	Down	Sell
POWERGRID	206	213	210	208	206	205	203	200	Down	Sell
RELIANCE	1428	1468	1444	1436	1420	1412	1396	1373	Up	Buy
SBIN	291	299	295	293	290	288	286	282	Up	Buy
SUNPHARMA	528	552	541	534	529	523	517	505	Down	Sell
TATAMOTORS	459	481	471	465	460	454	450	439	Down	Sell
TATAMTRDVR	285	298	292	288	285	282	279	273	Down	Sell
TATAPOWER	82	84	83	82	82	81	81	79	Down	Sell
TATASTEEL	518	535	527	522	519	514	511	503	Down	Sell
TCS	2407	2505	2460	2434	2415	2389	2370	2325	Down	Sell
TECHM	390	406	399	395	392	388	386	379	Down	Sell
ULTRACEMCO	4022	4136	4083	4052	4030	3999	3977	3924	Down	Sell
VEDL	239	245	242	240	239	237	236	233	Up	Buy
WIPRO	256	264	259	258	255	253	250	246	Up	Buy
YESBANK	1431	1471	1453	1442	1434	1423	1416	1397	Down	Sell
ZEEL	504	522	513	509	504	499	494	485	Up	Buy

## Contact Us

[www.choicebroking.in](http://www.choicebroking.in)

**Kkunal Parar**

*Sr. Research Associate*

kkunal.parar@choiceindia.com

**Kapil Shah**

*Research Associate*

kapil.shah@choiceindia.com

**Vikas Chaudhari**

*Research Associate*

vikas.chaudhari@choiceindia.com

**Amit Pathania**

*Research Associate*

amit.pathania@choiceindia.com



[customercare@choiceindia.com](mailto:customercare@choiceindia.com)



[www.choicebroking.in](http://www.choicebroking.in)



## Disclaimer

This is solely for information of clients of Choice Broking and does not constitute to be an investment advice. It is also not intended as an offer or solicitation for the purchase and sale of any financial instruments. Any action taken by you on the basis of the information contained herein is your responsibility alone and Choice Broking its subsidiaries or its employees or associates will not be liable in any manner for the consequences of such action taken by you. We have exercised due diligence in checking the correctness and authenticity of the information contained in this recommendation, but Choice Broking or any of its subsidiaries or associates or employees shall not be in any way responsible for any loss or damage that may arise to any person from any inadvertent error in the information contained in this recommendation or any action taken on basis of this information. Technical analysis studies market psychology, price patterns and volume levels. It is used to forecast future price and market movements. Technical analysis is complementary to fundamental analysis and news sources. The recommendations issued herewith might be contrary to recommendations issued by Choice Broking in the company research undertaken as the recommendations stated in this report is derived purely from technical analysis. Choice Broking has based this document on information obtained from sources it believes to be reliable but which it has not independently verified; Choice Broking makes no guarantee, representation or warranty and accepts no responsibility or liability as to its accuracy or completeness. The opinions contained within the report are based upon publicly available information at the time of publication and are subject to change without notice. The information and any disclosures provided herein are in summary form and have been prepared for informational purposes. The recommendations and suggested price levels are intended purely for trading purposes. The recommendations are valid for the day of the report however trading trends and volumes might vary substantially on an intraday basis and the recommendations may be subject to change. The information and any disclosures provided herein may be considered confidential. Any use, distribution, modification, copying, forwarding or disclosure by any person is strictly prohibited. The information and any disclosures provided herein do not constitute a solicitation or offer to purchase or sell any security or other financial product or instrument. The current performance may be unaudited. Past performance does not guarantee future returns. There can be no assurance that investments will achieve any targeted rates of return, and there is no guarantee against the loss of your entire investment.

POTENTIAL CONFLICT OF INTEREST DISCLOSURE (as on date of report) Disclosure of interest statement – • Analyst interest of the stock /Instrument(s): - No. • Firm interest of the stock / Instrument (s): - No.