

Equity Bazaar

26th May 17



Today, We may witness a mild negative opening in the Nifty around 9495 level on back of SGX Nifty and other Asian counters which are trading on a mild mix note today.

In a move that will bring relief to patients, the country's drug pricing regulator on Thursday fixed the ceiling price of 31 more drug formulations. National Pharmaceutical Pricing Authority (NPPA) decided to Morphine 15 mg/ml injection, Coagulation factor VIII, Diclofenac, trivalent paediatric vaccine, clomiphene, paracetamol injection among others.

Bharti Airtel, Vodafone India and Idea Cellular are likely to launch voice over LTE or VoLTE services by the end of September as part of their efforts to upgrade technology and compete better with the new entrant Reliance Jio Infocomm. VoLTE allows an operator to offer both voice and data, with voice being just another application that rides on an LTE data network. The incumbent telcos currently offer calling on the legacy circuit-switch technology.

As much as 303 companies are scheduled to report their results for the quarter ended March on Thursday which includes names like 3M India, Alkem Laboratories, BEML, Birla Corp, Cox & Kings, Crompton Greaves, DLF, Finolex Industries, HPCL, Indian Hotels, ITC, NBCC, ONGC, Orchid Pharma, Sun TV, Tata Chemicals, Tech Mahindra, Trent, TV Today among others.

Indian Markets

SENSEX	30,750	1.46%
NIFTY	9,509	1.57%
SGX Nifty*	9,483	-0.14%

Global Indices

Dow Jones	21,033	0.71%
Nasdaq	6,205	0.68%
FTSE	7,518	0.04%
DAX	12,622	-0.17%
Straits Times	3,220	-0.44%
Nikkei 225	19,762	-0.26%
Hang Seng	25,642	0.04%

Commodities

Gold	28,661	-0.18%
Silver	39,802	-0.08%
Natural Gas	211	-1.94%
Crude Oil	3,178	-4.75%

Currency

Dollar / Rupee	64.61	-0.19%
Euro / Rupee	72.26	-0.12%
Pound / Rupee	83.16	-0.43%

Volumes Rs.mn

Cash BSE	33,987	-11.33
Cash NSE	351,281	28.34

FII Activities Rs.Cr.

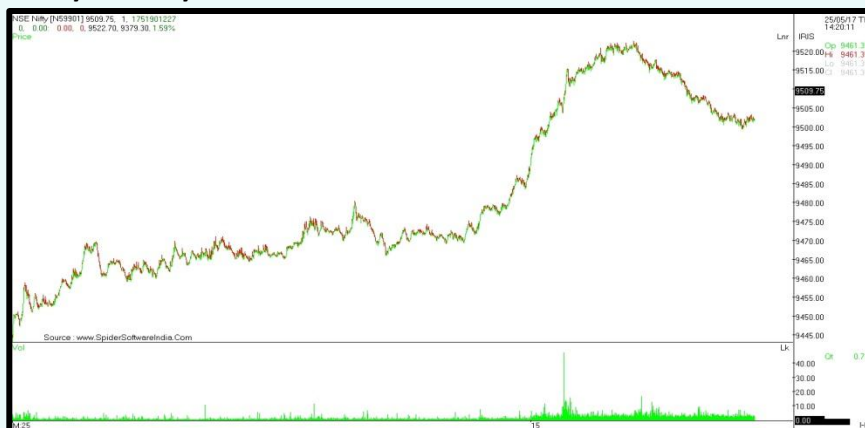
Purchase	Sale	Net
7650.97	7,279	372.05

MF Activities Rs.Cr.

Purchase	Sale	Net
14490.67	9,018	5472.71

*Sources- Bloomberg, Moneycontrol, Zeebusiness, livemint

Nifty Intraday



Equity Bazaar

26th May 17



Nifty Outlook



	L1	L2	L3
R	9562	9614	9706
S	9418	9326	9274

Moving Averages	
21 DEMA	9378
100 DEMA	9018
250 DEMA	8664

- On a daily chart, the Nifty closed above its support of its Raising Channel Pattern at 9447 level, which signifies positivity in the index for the upcoming trading sessions.
- Moreover, the Nifty has taken support of its 21 days moving average at 9378 which suggests an upside movement in the Index.
- A daily momentum indicator RSI reading is at 63.74 levels with a positive crossover which represents positive breath in the Index.
- Based on the above technical parameters, we can buy upto 9480 for the upside level of 9550-9600, while downside support comes at 9440 level.

Bank Nifty Outlook



	L1	L2	L3
R	23448	23706	24145
S	22751	22312	22054

Moving Averages	
21 DEMA	22567
100 DEMA	21144
250 DEMA	19775

- On a daily chart, the BankNifty has been trading in an uncharted territory with enough breath which suggests that the Index has shifted its momentum dynamic to a new zone closing at 23190 up-surging itself by 654 points.
- Additionally, the Nifty has taken support of its 21 days moving average at 22567 which suggests an upside movement in the Index.
- A daily momentum indicator RSI has given a positive crossover which represents positive breath in the Index.
- Based on the above technical parameters, we are expecting an upside movement upto the level of 23500, while downside support comes at 23000 level.

Equity Bazaar

26th May 17



Symbols	CLOSE	R3	R2	R1	P	S1	S2	S3	Trend	Action
ACC	1633	1736	1674	1654	1612	1592	1551	1489	Up	Buy
ADANIPTS	342	370	355	348	340	333	325	310	Up	Buy
AMBUJACEM	240	256	247	244	238	235	230	221	Up	Buy
ASIANPAINT	1113	1179	1144	1129	1109	1094	1074	1039	Up	Buy
AUROPHARMA	528	557	541	535	525	519	509	494	Up	Buy
AXISBANK	508	533	519	513	505	499	490	476	Up	Buy
BAJAJ-AUTO	2824	2952	2879	2852	2806	2779	2733	2661	Up	Buy
BANKBARODA	182	193	187	184	180	178	174	167	Up	Buy
BHARTIARTL	369	400	384	377	369	361	353	338	Up	Buy
BOSCHLTD	23300	25951	24672	23986	23393	22707	22114	20835	Down	Sell
BPCL	723	773	747	735	721	709	695	669	Up	Buy
CIPLA	505	566	537	521	509	492	480	452	Down	Sell
COALINDIA	266	272	268	267	265	264	261	258	Up	Buy
DRREDDY	2423	2664	2553	2488	2443	2378	2333	2222	Down	Sell
EICHERMOT	28118	29451	28652	28385	27853	27586	27054	26255	Up	Buy
GAIL	397	422	410	403	398	391	386	373	Down	Sell
GRASIM	1100	1159	1129	1115	1099	1085	1069	1039	Up	Buy
HCLTECH	859	890	875	867	860	852	845	830	Down	Sell
HDFC	1539	1570	1554	1547	1539	1531	1523	1508	Up	Buy
HDFCBANK	1613	1728	1666	1639	1603	1577	1541	1479	Up	Buy
HEROMOTOCO	3640	3840	3722	3681	3604	3563	3486	3368	Up	Buy
HINDALCO	191	202	196	193	190	187	183	177	Up	Buy
HINDUNILVR	1045	1081	1061	1053	1042	1034	1022	1002	Up	Buy
IBULHSGFIN	1047	1130	1090	1069	1050	1029	1011	971	Down	Sell
ICICIBANK	317	342	328	322	314	309	300	287	Up	Buy
INDUSINDBK	1459	1558	1504	1482	1450	1428	1396	1342	Up	Buy
INFRATEL	369	391	381	375	370	364	360	349	Down	Sell
INFY	981	1027	1002	991	976	966	951	925	Up	Buy
IOC	436	474	454	445	434	425	414	394	Up	Buy
ITC	301	319	310	305	300	296	291	282	Up	Buy
KOTAKBANK	955	1004	978	966	951	940	925	898	Up	Buy
LT	1765	1910	1827	1796	1744	1713	1661	1578	Up	Buy
LUPIN	1140	1288	1215	1178	1142	1105	1069	996	Down	Sell
M&M	1336	1389	1357	1347	1325	1315	1293	1261	Up	Buy
MARUTI	6970	7307	7124	7047	6941	6864	6758	6575	Up	Buy
NTPC	156	161	158	157	156	155	154	151	Up	Buy
ONGC	175	179	177	176	175	174	173	170	Up	Buy
POWERGRID	199	209	204	201	199	196	193	188	Up	Buy
RELIANCE	1302	1335	1319	1310	1303	1295	1288	1272	Down	Sell
SBIN	290	304	296	293	288	285	281	273	Up	Buy
SUNPHARMA	595	649	623	609	596	582	569	542	Down	Sell
TATAMOTORS	475	501	487	481	473	467	459	444	Up	Buy
TATAMTRDVR	281	297	289	285	282	278	274	266	Down	Sell
TATAPOWER	80	83	82	81	80	79	79	78	Down	Sell
TATASTEEL	486	504	493	490	483	479	473	462	Up	Buy
TCS	2615	2746	2676	2646	2607	2576	2537	2468	Up	Buy
TECHM	425	447	435	430	423	418	411	400	Up	Buy
ULTRACEMCO	4152	4270	4213	4183	4156	4126	4099	4042	Down	Sell
WIPRO	535	559	546	541	533	528	520	507	Up	Buy
YESBANK	1456	1531	1492	1474	1452	1434	1413	1373	Up	Buy
ZEEL	511	538	524	517	511	504	497	484	Down	Sell

Contact Us

www.choicebroking.in

Kkunal Parar

Sr. Research Associate

kkunal.parar@choiceindia.com

Kapil Shah

Research Associate

kapil.shah@choiceindia.com

Vikas Chaudhari

Research Associate

vikas.chaudhari@choiceindia.com

Amit Pathania

Research Associate

amit.pathania@choiceindia.com



customercare@choiceindia.com



www.choicebroking.in



Disclaimer

This is solely for information of clients of Choice Broking and does not constitute to be an investment advice. It is also not intended as an offer or solicitation for the purchase and sale of any financial instruments. Any action taken by you on the basis of the information contained herein is your responsibility alone and Choice Broking its subsidiaries or its employees or associates will not be liable in any manner for the consequences of such action taken by you. We have exercised due diligence in checking the correctness and authenticity of the information contained in this recommendation, but Choice Broking or any of its subsidiaries or associates or employees shall not be in any way responsible for any loss or damage that may arise to any person from any inadvertent error in the information contained in this recommendation or any action taken on basis of this information. Technical analysis studies market psychology, price patterns and volume levels. It is used to forecast future price and market movements. Technical analysis is complementary to fundamental analysis and news sources. The recommendations issued herewith might be contrary to recommendations issued by Choice Broking in the company research undertaken as the recommendations stated in this report is derived purely from technical analysis. Choice Broking has based this document on information obtained from sources it believes to be reliable but which it has not independently verified; Choice Broking makes no guarantee, representation or warranty and accepts no responsibility or liability as to its accuracy or completeness. The opinions contained within the report are based upon publicly available information at the time of publication and are subject to change without notice. The information and any disclosures provided herein are in summary form and have been prepared for informational purposes. The recommendations and suggested price levels are intended purely for trading purposes. The recommendations are valid for the day of the report however trading trends and volumes might vary substantially on an intraday basis and the recommendations may be subject to change. The information and any disclosures provided herein may be considered confidential. Any use, distribution, modification, copying, forwarding or disclosure by any person is strictly prohibited. The information and any disclosures provided herein do not constitute a solicitation or offer to purchase or sell any security or other financial product or instrument. The current performance may be unaudited. Past performance does not guarantee future returns. There can be no assurance that investments will achieve any targeted rates of return, and there is no guarantee against the loss of your entire investment.

POTENTIAL CONFLICT OF INTEREST DISCLOSURE (as on date of report) Disclosure of interest statement – • Analyst interest of the stock /Instrument(s): - No. • Firm interest of the stock / Instrument (s): - No.