

SENSEX	30464.92 (+0.10%)
NIFTY	9427.90 (-0.02%)

Sector Indices	Close	% Change
NIFTY AUTO	10410	-0.25
NIFTY ENERGY	11795	-0.75
NIFTY FMCG	24353	2.05
NIFTY INFRA	3248	0.14
NIFTY IT	10456	-0.85
NIFTY METAL	2943	-0.13
NIFTY MIDCAP 50	4563	-0.39
NIFTY PHARMA	10156	-0.04
NIFTY PSU BANK	3769	0.84
NIFTY REALTY	265	-0.08

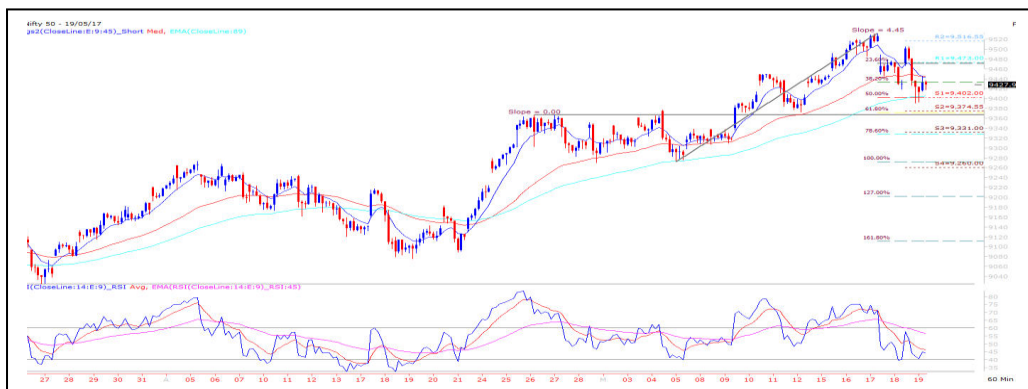
Key Levels - Nifty	
Support	9370 / 9307
Resistance	9460 / 9500

FII & DII Activities (Fig. in Cr)

Date	FII	DII
19-May-17	-988.70	349.21
18-May-17	-360.59	897.96
17-May-17	-731.39	614.51
16-May-17	235.33	-65.77
15-May-17	235.33	-65.77
12-May-17	841.80	-710.83
11-May-17	1306.71	-1037.18
10-May-17	893.36	-229.73
09-May-17	332.87	16.92
08-May-17	-542.47	663.33

Key Levels - Bank Nifty	
Support	22575 / 22450
Resistance	22978 / 23120

Nifty Spot Chart



Technical Outlook

The Friday's price action can be perfectly termed as a 'Tug of War' as both the counter parties trying pull index into their favour which resulted to significant volatility. During the day, the Thursday's intraday gap of 9489 / 9515 acted as a strong hurdle and failure to cross such zone resulted into complete nosedive. However, some support based buying interest during the second half resulted into a close on flat note. Going forward, 9390 / 9370 zone will act as a strong support below which index likely to correct till 9307. On the other side, 9460 will act as an immediate resistance above which the next resistance comes near 9500 / 9533.

Bank Nifty Spot Chart



Technical Outlook

On Friday, the Nifty Bank index opened nearly half a percent higher and the impact of hourly 89-EMA seen during the initial hour of trade. Subsequently, we saw decent volatility throughout the remaining part of the session. In the process, index eventually ended with a nominal gain of 0.31%. The Friday's candlestick pattern resembles Doji pattern indicates indecision. Going forward, 22578 will act as a strong support any break below this level will trigger fresh sell-off towards 22450 whereas the recent swing high of 22978 will act as a near term hurdle.

Stock For Today

Name	Entry	Target	Stop loss
VOLTAS	Buy Around 413	427	406
DRREDDY	Buy At cmp 2655	2740	2610
KSCL	Buy Around 537	555	526

Daily Pivot Levels For Nifty 50 Stocks

Scrip Name	Support 2	Support 1	Pivot	Resist 1	Resist 2
ACC	1643.5	1659.4	1682.0	1697.9	1720.5
ADANI PORTS	341.9	345.7	349.1	352.9	356.3
AMBUJACEM	246.8	249.0	252.5	254.8	258.3
ASIANPAINT	1076.3	1099.7	1122.3	1145.7	1168.3
AUROPHARMA	585.8	590.6	598.3	603.0	610.7
AXISBANK	490.3	496.0	499.9	505.6	509.6
BAJAJ-AUTO	2906.4	2939.5	2979.3	3012.4	3052.2
BANKBARODA	180.7	184.7	190.3	194.3	199.9
BHARTIARTL	362.1	367.4	373.5	378.8	384.8
BOSCHLTD	22012.5	22505.0	23302.5	23795.0	24592.5
BPCL	685.9	694.2	708.3	716.6	730.8
CIPLA	555.4	560.2	563.4	568.2	571.4
COALINDIA	270.7	273.5	278.6	281.4	286.5
DRREDDY	2604.9	2630.7	2662.8	2688.6	2720.8
EICHERMOT	27188.0	27562.0	28130.0	28504.0	29072.0
GAIL	390.8	395.9	401.1	406.3	411.5
GRASIM	1064.8	1092.6	1127.8	1155.6	1190.8
HCLTECH	837.4	841.0	847.8	851.4	858.2
HDFC	1495.3	1508.0	1528.0	1540.6	1560.6
HDFCBANK	1534.2	1547.7	1558.8	1572.4	1583.5
HEROMOTOCO	3464.9	3518.3	3587.1	3640.5	3709.4
HINDALCO	181.0	186.0	191.0	196.0	201.0
HINDUNILVR	987.5	997.8	1010.3	1020.5	1033.0
IBULHSGFIN	998.7	1019.4	1044.7	1065.3	1090.6
ICICIBANK	299.0	303.0	307.7	311.7	316.4
INDUSINDBK	1364.9	1377.1	1395.2	1407.3	1425.4
INFRATEL	367.8	373.4	380.4	386.0	393.1
INFY	941.3	949.6	956.2	964.5	971.0
IOC	425.1	430.3	438.6	443.7	452.0
ITC	274.2	280.2	287.9	293.9	301.6
KOTAKBANK	928.5	932.9	940.2	944.7	952.0
LT	1682.3	1703.4	1718.7	1739.9	1755.2
LUPIN	1298.0	1308.1	1315.0	1325.1	1332.0
M&M	1310.7	1322.1	1339.8	1351.2	1368.9
MARUTI	6589.7	6690.1	6792.0	6892.5	6994.4
NTPC	156.7	157.9	159.3	160.5	161.9
ONGC	177.1	178.6	180.6	182.1	184.1
POWERGRID	199.6	202.7	207.2	210.3	214.9
RELIANCE	1295.8	1307.3	1321.5	1333.0	1347.2
SBIN	295.1	301.6	308.4	314.9	321.7
SUNPHARMA	642.0	647.6	652.3	657.8	662.5
TATAMOTORS	430.6	437.0	441.0	447.3	451.3
TATAMTRDVR	258.4	262.6	265.3	269.5	272.2
TATAPOWER	81.8	83.0	84.2	85.4	86.6
TATASTEEL	472.8	481.2	488.6	496.9	504.3
TCS	2456.7	2481.9	2511.2	2536.5	2565.8
TECHM	407.0	411.6	418.8	423.4	430.6
ULTRACEMCO	4289.9	4325.3	4371.3	4406.7	4452.7
WIPRO	512.1	515.9	521.9	525.7	531.7
YESBANK	1380.4	1405.2	1430.1	1455.0	1479.9
ZEEL	498.9	505.4	512.7	519.3	526.6

TEAM

ANALYST	DESIGNATION	EMAIL	TELEPHONE
Aditya Agarwal	Head – Technical Research	aditya@way2wealth.com	+9122-61462955
Harish Jujarey	Sr. Technical Analyst – Commodity	harishjujarey@way2wealth.com	+9122-61462952
Mohit Agarwal	Technical Analyst – Forex & Commodity	mohitk@way2wealth.com	+9122-61462954
Monil Shah, CMT	Technical Analyst – Equity & Forex	monilshah@way2wealth.com	+9122-61462980

Disclaimer

Analyst Certification: I, Monil Shah, CMT the research analyst and author of this report, hereby certify that the views expressed in this research report accurately reflect our personal views about the subject securities, issuers, products, sectors or industries. It is also certified that no part of the compensation of the analyst(s) was, is, or will be directly or indirectly related to the inclusion of specific recommendations or views in this research. The analyst(s), principally responsible for the preparation of this research report, receives compensation based on overall revenues of the company (Way2Wealth Brokers Private Limited, hereinafter referred to as Way2Wealth) and has taken reasonable care to achieve and maintain independence and objectivity in making any recommendations.

It is confirmed that Monil Shah, CMT the author of this report has not received any compensation from the companies mentioned in the report in the preceding 12 months. Our research professionals are paid in part based on the profitability of Way2Wealth, which include earnings from other business. Neither Way2Wealth nor its directors, employees, agents or representatives shall be liable for any damages whether direct or indirect, incidental, special or consequential including lost revenue or lost profits that may arise from or in connection with the use of the information contained in this report.

This report is for the personal information of the authorized recipient and does not construe to be any investment, legal or taxation advice to you. Way2Wealth is not soliciting any action based upon it. Nothing in this research shall be construed as a solicitation to buy or sell any security or product, or to engage in or refrain from engaging in any such transaction. The contents of this material are general and are neither comprehensive nor appropriate for every individual and are solely for the informational purposes of the readers. This material does not take into account the specific objectives, financial situation or needs of an individual/s or a Corporate/s or any entity/s.

This research has been prepared for the general use of the clients of the Way2Wealth and must not be copied, either in whole or in part, or distributed or redistributed to any other person in any form. If you are not the intended recipient you must not use or disclose the information in this research in any way. Though disseminated to all the customers simultaneously, not all customers may receive this report at the same time. Way2Wealth will not treat recipients as customers by virtue of their receiving this report. The distribution of this document in other jurisdictions may be restricted by the law applicable in the relevant jurisdictions and persons into whose possession this document comes should inform themselves about, and observe any such restrictions.

The report is based upon information obtained from sources believed to be reliable, but we do not make any representation or warranty that it is accurate, complete or up to date and it should not be relied upon as such. Way2Wealth or any of its affiliates or employees makes no warranties, either express or implied of any kind regarding any matter pertaining to this report, including, but not limited to warranties of suitability, fitness for a particular purpose, accuracy, timeliness, completeness or non-infringement. We accept no obligation to correct or update the information or opinions in it. Way2Wealth or any of its affiliates or employees shall not be in any way responsible for any loss or damage that may arise to any person from any inadvertent error in the information contained in this report. The recipients of this report should rely on their own investigations. In no event shall Way2Wealth be liable for any damages of any kind, including, but not limited to, indirect, special, incidental, consequential, punitive, lost profits, or lost opportunity, whether or not Way2Wealth has advised of the possibility of such damages.

This material contains statements that are forward-looking; such statements are based upon the current beliefs and expectations and are subject to significant risks and uncertainties. Actual results may differ from those set forth in the forward-looking statements. These uncertainties include but are not limited to: the risk of adverse movements or volatility in the securities markets or in interest or foreign exchange rates or indices; adverse impact from an economic slowdown; downturn in domestic or foreign securities and trading conditions or markets; increased competition; unfavorable political and diplomatic developments; change in the governmental or regulatory policies; failure of a corporate event and such others. This is not an offer to buy or sell or a solicitation of an offer to buy or sell any security or instrument or to participate in any particular trading strategy. No part of this material may be copied or duplicated in any form by any means or redistributed without the written consent of Way2Wealth. In no event shall any reader publish, retransmit, redistribute or otherwise reproduce any information provided by Way2Wealth in any format to anyone. Way2Wealth and its affiliates, officers, directors and employees including persons involved in the preparation or issuance of this report may from time to time have interest in securities / positions, financial or otherwise in the securities related to the information contained in this report.