

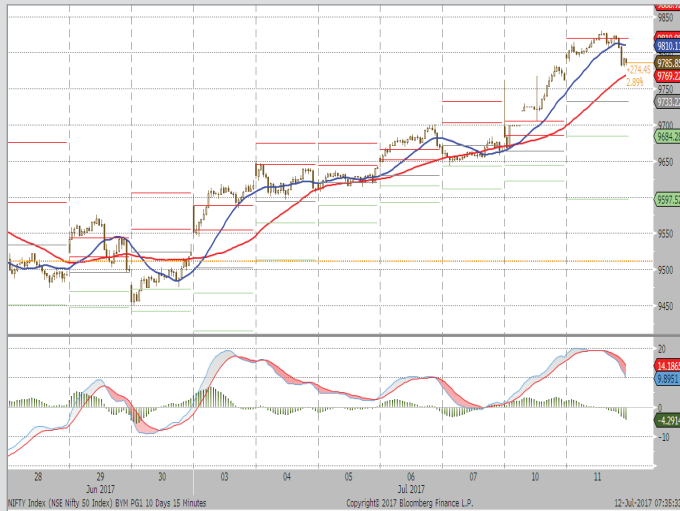
MARKET LENS

NIFTY	9786
Support	9700
	9630
Resistance	9840
	9900

IN FOCUS

Stock in Focus	INDUSIND BANK
Positional Pick	TATA CHEMICALS
Intraday Pick	CEAT
Intraday Pick	VEDANTA

July 12, 2017



STOCK IN FOCUS

- ▶ **IndusInd Bank** closed flat, outperforming benchmark Bank NIFTY by 0.4%.
- ▶ The bank has delivered a healthy performance on operating as well as assets quality front in 1QFY18. Its profit after tax grew by 26.5% YoY and 11.3% QoQ to Rs8.4bn led by robust growth in balance sheet and healthy improvement in NII and fee-based income
- ▶ Saving deposit growth further accelerated to 65.3% YoY and 16.7% QoQ to Rs316bn. As a result CASA ratio improved to 37.8% in 1QFY18 v/s 36.9% in 4QFY17 and 34.4% in 1QFY17.
- ▶ Under newly introduced Planning Cycle-IV, the Bank will look forward to double its loan book over next three years. Major growth will come from organic route with corporate and consumer division will have approximately a 50:50 mix.
- ▶ We expect that the Bank is likely to sustain strong growth in CASA deposits and fee-based income as its total branch count is expected to reach 2,000 FY20-end.
- ▶ **We reiterate our BUY recommendation on the stock with an unrevised Target Price of Rs1,716 based on 3.7x FY19 Adjusted book value.**

Positional Pick

TATA CHEMICALS (PREVIOUS CLOSE: 637) **SELL**

For today's trade, short position can be initiated in the range of Rs638-645 for the target of Rs590 and with a strict stop loss of Rs670.

Intraday Picks

CEAT (PREVIOUS CLOSE: 1863) **SELL**

FOR TODAY'S TRADE, SHORT POSITION CAN BE INITIATED AT AROUND RS1890 FOR THE TARGET OF RS1850-1835 AND WITH A STRICT STOP LOSS OF RS1915.

VEDANTA (PREVIOUS CLOSE: 258) **SELL**

For today's trade, short position can be initiated at around Rs259 for the target of Rs254-250 and with a strict stop loss of Rs264.

EQUITY INDICES

Indices	Absolute Change		Percentage Change		
	Last Trade	Change	1-D	1-Mth	YTD
Domestic					
BSE Sensex	31,747.1	31.5	0.1%	2.1%	19.2%
CNX Nifty	9,786.1	15.0	0.2%	1.8%	19.5%
S&P CNX 500	8,544.9	(12.1)	-0.1%	1.6%	22.4%
SENSEX 50	10,148.8	11.5	0.1%	1.9%	20.4%
International					
DJIA	21,409.1	0.5	0.0%	0.8%	8.3%
NASDAQ	6,193.3	16.9	0.3%	0.3%	15.1%
NIKKEI	20,125.0	(70.5)	-0.4%	1.1%	5.3%
HANGSENG	26,009.6	132.0	0.5%	1.2%	18.2%
MSCI Emerging Mkts	1,018.2	8.9	0.9%	0.9%	18.1%

ADRs / GDRs

	Last Trade	Change	1-D	1-Mth	YTD
Dr. Reddy's Lab (ADR)	41.5	(0.4)	-1.0%	1.6%	-8.3%
Tata Motors (ADR)	34.9	0.5	1.3%	-0.3%	1.5%
Infosys (ADR)	15.5	0.2	1.0%	2.7%	4.3%
ICICI Bank (ADR)	8.9	(0.1)	-1.0%	1.3%	30.7%
HDFC Bank (ADR)	88.4	0.1	0.1%	0.9%	45.7%
Axis Bank (GDR)	39.0	(0.5)	-1.3%	0.5%	18.9%
Reliance Ind (GDR)	45.8	(0.5)	-1.0%	12.7%	45.0%

COMMODITY MARKET

Key Commodities	Last Trade	Change	1-D	1-Mth	YTD
Brent Crude (\$/bl)	48.2	0.7	1.5%	-0.2%	-15.2%
Silver (\$/Oz)	15.9	0.1	0.5%	-6.2%	0.0%
Gold (\$/Oz)	1,218.6	0.9	0.1%	-3.8%	6.2%
Copper LME (\$/MT)	5,847.3	51.3	0.9%	1.2%	5.9%
Aluminium LME (\$/MT)	1,883.3	0.3	0.0%	-0.9%	10.5%
Baltic Dry	820.0	(2.0)	-0.2%	-5.7%	-14.7%

CURRENCY RATES

	Last Trade	Change	1-D	1-Mth	YTD
USD/INR	64.6	64.5	0.1%	0.2%	-4.9%
EUR/INR	73.6	73.5	0.2%	1.7%	2.7%

RATES

	Last Trade	Change	1-D	1-Mth	YTD
T-Bill - 91 D	6.3	6.3	0.1%	0.1%	1.2%
10 Year G-sec Yield	6.5	6.5	0.0%	-0.5%	-0.4%

INVESTMENT ACTIVITY (RS. CR)

Category	BUY	SELL	NET	Prev
FI	5,716.8	5,534.8	182.1	102.3
DII	3,394.7	3,058.9	335.8	894.6

EXCHANGE TURNOVER

Exchange	Rs Crore
BSE Equity	4,488.2
BSE Derivatives	13.84
NSE Equity	26,456.5
NSE Derivatives	3,33,398.0

Institutional Equity Research

MARKET LENS

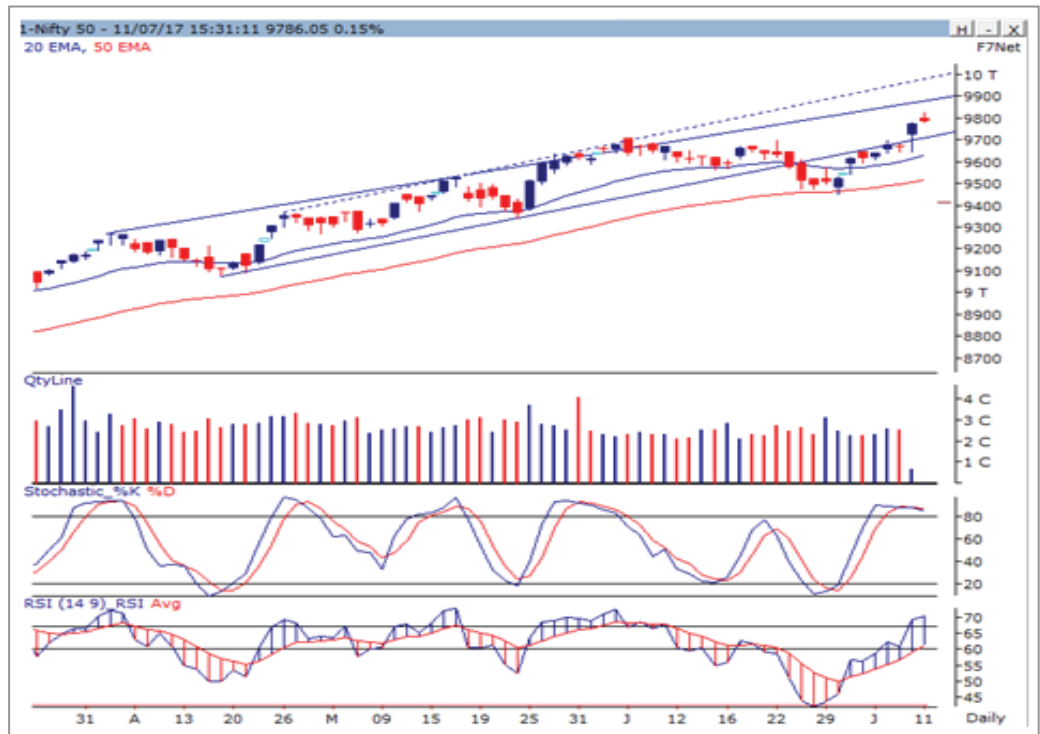
NIFTY		9786		IN FOCUS	
Support	9700	Stock in Focus	INDUSIND BANK		
	9630	Positional Pick	TATA CHEMICALS		
Resistance	9840	Intraday Pick	CEAT		
	9900	Intraday Pick	VEDANTA		

July 12, 2017

Technical Research

MARKET SYNOPSIS

- ▶ Yesterday, NSE-NIFTY has crossed 9,800 mark post a stable opening and later gradually moved higher, but in the second half, index reversed from 9,830 and slipped to 9,779 levels amidst higher level profit booking. Finally, NIFTY ended the day with trimmed gain at 9,786 mark, with rise of 15 points.
- ▶ NSE Cash segment reported turnover of Rs26,457 crore.
- ▶ Overall market breadth remained negative, where 647 stocks advanced against 1038 declined stocks.



- ▶ Mixed trend was observed across all the sectoral indices during the day, where IT and Auto indices emerged as top gainers with the increase of 0.7% each. However, on the hand, PSU Bank and Realty indices reported the highest loss (i.e.1.3% and 1.5% respectively).

NSE-NIFTY OUTLOOK

- ▶ Though NSE-NIFTY managed to record new life-time-high, index ended ~0.5% down from the day's high, signaling near-term sluggish in the market. As mentioned earlier, our view will remain positive on NIFTY, but some decline or sideways movement cannot be ruled out, as RSI reached to the prior reversal point and Stochastic has given negative cross-over around its overbought zone. In case of major declines, its short-term and medium-term moving averages (i.e. 20-day and 50-day EMAs) will continue to work as key reversal point for the index, which are placed at 9,630 and at 9,518 levels respectively. However, on the higher side, NIFTY will face major hurdles around 9,900 and then at 10,000 levels.
- ▶ As for the day, support is placed at around 9,700 and then at 9,630 levels, while resistance is observed at 9,840 and then around at 9,900 levels.

Institutional Equity Research

MARKET LENS

NIFTY 9786 IN FOCUS

July 12, 2017

Support	9700	Stock in Focus	INDUSIND BANK
	9630	Positional Pick	TATA CHEMICALS
Resistance	9840	Intraday Pick	CEAT
	9900	Intraday Pick	VEDANTA

Technical Research

Positional Pick: TATA CHEMICALS

PREV.CLOSE: 637 | RECO: SELL | IN: 638-645 | TARGET: 590 | STOP LOSS: 670



- ▶ Tata Chemicals witnessed sharp rebound from Rs585, but later the stock reversed after facing resistance of its life-time-high (Rs666.5) and slipped to 5-day closing low.
- ▶ Due to recent decline in the prices, key technical indicators-Stochastic and RSI reversed from their overbought zone and bear market resistance area (60-67) respectively, signaling near-term weakness in the stock.
- ▶ As per the current daily set-up, we believe that Tata Chemicals will remain in pressure for next couple of days, where it will find major support around resistance-turned-support trend line, placed around Rs590.
- ▶ In case of any rebound, the stock will continue to face strong hurdle around its life-time-high.
- ▶ Thus, short position can be initiated in the range of Rs638-645 for the target of Rs590 and with a strict stop loss of Rs670.

Institutional Equity Research

MARKET LENS

NIFTY 9786 IN FOCUS

July 12, 2017

Support	9700	Stock in Focus	INDUSIND BANK
	9630	Positional Pick	TATA CHEMICALS
Resistance	9840	Intraday Pick	CEAT
	9900	Intraday Pick	VEDANTA

Derivatives Snapshot

- ▶ Nifty rose to 9,830 level post strong opening, but later reversed in the second half due to profit booking and finally, closed the day at 9,786 mark with gain of 15 points. Among the Nifty stocks 28 stocks advanced and 23 stocks declined during the day.
- ▶ Sectorally it was a mixed bag with IT and Auto to gain by on an average 0.7% while PSU Bank and Realty sectors declined by 1.3% and 1.5% respectively.
- ▶ Broader market indices remained flat to negative with NIFTY 100,200 and 500 ended down by on an average 0.1% while Mid-cap and Small-cap indices decreased by 0.8% each.
- ▶ Nifty July future ended with 7 points of premium at 9,793 mark, while on other hand, Bank Nifty July future ended with the premium of 19 points at 23,603 level.
- ▶ Our positive stance on Nifty will remain intact, but either a time-wise or a price-wise correction cannot be ruled in the market till the time index closes below 9,800 mark, as Nifty 9,800 put has added 18 Lac shares in the OI. On the lower side, Nifty will find support around 9,600 level, as Nifty 9,600 put has the highest OI (i.e.74 Lac).

Sectoral Activity: Amongst sectoral index, Auto and IT remained in focus with positive momentum.

Stock Activity: NIIT Technologies and Hexaware Technologies observed build up in long position.

TOP 5 PRICE GAINERS

Stock Name	LTP	% Price Chg	% Vol Chg	%OI Chg	Support	Pivot	Resistance
INDRAPRASTHA GAS LTD	1117.75	4.24%	4979.98%	6.16%	1079	1104	1142
NIIT TECHNOLOGIES LTD	588.70	4.03%	1710.87%	54.38%	570	586	604
JINDAL STEEL & POWER LTD	138.85	3.27%	793.57%	5.06%	133	137	142
HEXAWARE TECHNOLOGIES LTD	252.40	3.17%	417.73%	12.37%	247	251	257
SUZLON ENERGY LIMITED	19.35	2.65%	923.96%	5.26%	19	19	20

TOP 5 PRICE LOSERS

Stock Name	LTP	% Price Chg	% Vol Chg	%OI Chg	Support	Pivot	Resistance
IDFC BANK LIMITED	62.00	-4.91%	30.26%	-2.39%	60	63	65
JAIPRAKASH ASSOCIATES LTD	20.90	-4.57%	119.34%	-1.89%	20	21	22
INDIABULLS REAL EST. LTD	202.90	-4.13%	202.24%	-5.19%	199	206	210
SHRIRAM TRANSPORT FIN CO.	1013.90	-3.94%	454.96%	5.83%	992	1028	1049
THE SOUTH INDIAN BANK LTD	27.70	-3.82%	610.55%	15.71%	27	28	29

TOP 5 OI GAINERS

Stock Name	LTP	% Price Chg	% Vol Chg	%OI Chg	Support	Pivot	Resistance
NIIT TECHNOLOGIES LTD	588.70	4.03%	1710.87%	54.38%	570	586	604
AJANTA PHARMA LIMITED	1503.60	-2.21%	1043.31%	48.16%	1486	1518	1536
HINDUSTAN PETROLEUM CORP	340.40	-0.18%	271.96%	47.65%	336	340	345
INDUSIND BANK LIMITED	1560.70	0.02%	1001.33%	41.84%	1551	1561	1571
LIC HOUSING FINANCE LTD	725.10	-2.44%	731.82%	19.32%	716	732	740

TOP 5 OI LOSERS

Stock Name	LTP	% Price Chg	% Vol Chg	%OI Chg	Support	Pivot	Resistance
MAX FINANCIAL SERV LTD	595.50	-0.27%	1515.83%	-8.31%	587	595	603
CONTAINER CORP OF IND LTD	1173.45	-2.23%	280.38%	-7.23%	1156	1185	1202
BHARTI AIRTEL LIMITED	395.45	-2.53%	192.69%	-5.65%	390	399	405
INDIABULLS REAL EST. LTD	202.90	-4.13%	202.24%	-5.19%	199	206	210
HOUSING DEV & INFRA LTD	84.35	-1.80%	419.86%	-5.09%	83	85	86

Institutional Equity Research

MARKET LENS

NIFTY 9786 IN FOCUS

July 12, 2017

Support	9700	Stock in Focus	INDUSIND BANK
	9630	Positional Pick	TATA CHEMICALS
Resistance	9840	Intraday Pick	CEAT
	9900	Intraday Pick	VEDANTA

Derivatives Snapshot

TOP 5 "RISE IN % DEL CHG"

Stock Name	LTP	% Price Chg	% Vol Chg	%Del Chg	Support	Pivot	Resistance
DALMIA BHARAT LIMITED	2647.00	1.07%	5107.97%	6277.22%	2616	2647	2678
DABUR INDIA LTD	305.10	0.41%	2697.89%	3802.64%	302	305	308
ORACLE FIN SERV SOFT LTD.	3631.85	0.25%	1150.04%	2931.89%	3599	3633	3665
INDRAPRASTHA GAS LTD	1117.75	4.24%	4979.98%	2486.66%	1079	1104	1142
NIIT TECHNOLOGIES LTD	588.70	4.03%	1710.87%	2280.51%	570	586	604

TOP 5 "DECLINE IN % DEL CHG"

Stock Name	LTP	% Price Chg	% Vol Chg	%Del Chg	Support	Pivot	Resistance
DLF LIMITED	199.00	-2.04%	104.74%	-64.34%	197	201	203
EQUITAS HOLDINGS LIMITED	157.20	-1.75%	-3.43%	-43.79%	155	159	161
BANK OF INDIA	144.40	-3.22%	65.46%	-28.28%	142	146	149
BANK OF BARODA	162.65	-2.37%	21.72%	-16.29%	160	164	166
ALLAHABAD BANK	70.35	-2.49%	105.13%	-9.17%	69	71	72

SECTORAL ACTIVITY

	Value Total OI	Average of OI Change %	Average of Price Change %	Total Volume	Average of Volume Change %
Consumer Discretionary	589438690	1.1%	-0.5%	84978429	542.3%
Consumer Staples	172050900	2.1%	-0.2%	29886305	786.5%
Energy	246474292	8.3%	0.2%	34419153	982.9%
Financials	1669355590	1.8%	-1.5%	179263635	331.1%
Health Care	173292000	4.6%	-0.8%	20519674	501.3%
Industrials	190431300	0.2%	-0.3%	30581171	594.2%
Information Technology	122100650	7.8%	0.5%	23440973	728.4%
Materials	1367816700	0.0%	-0.6%	194255271	620.7%
Telecommunication Services	285784400	-0.3%	-1.8%	67874726	214.2%
Utilities	995202700	2.7%	-0.5%	139745700	345.8%
Grand Total	5811947222	2.3%	-0.7%	804965037	539.9%

Institutional Equity Research

MARKET LENS

NIFTY 9786 IN FOCUS

July 12, 2017

Support	9700	Stock in Focus	INDUSIND BANK
	9630	Positional Pick	TATA CHEMICALS
Resistance	9840	Intraday Pick	CEAT
	9900	Intraday Pick	VEDANTA

Pivot Table

Name	LTP	Support 2	Support 1	Pivot	Resistance 1	Resistance 2
Nifty 50	9786.1	9747.1	9766.6	9798.3	9817.8	9849.5
Nifty Bank	23584.6	23435.3	23510.0	23627.3	23701.9	23819.2
ACC LIMITED	1650.8	1613.9	1632.4	1644.6	1663.1	1675.3
ADANI PORT & SEZ LTD	372.7	368.6	370.7	373.8	375.8	378.9
AMBUJA CEMENTS LTD	255.2	251.1	253.1	255.2	257.3	259.4
ASIAN PAINTS LIMITED	1131.8	1117.4	1124.6	1129.8	1137.0	1142.2
AUROBINDO PHARMA LTD	700.0	683.6	691.8	704.4	712.5	725.1
AXIS BANK LIMITED	506.8	501.7	504.3	508.3	510.9	514.9
BAJAJ AUTO LIMITED	2792.8	2709.9	2751.3	2777.2	2818.6	2844.5
BANK OF BARODA	162.7	157.9	160.3	163.9	166.3	169.9
BHARTI AIRTEL LIMITED	395.5	383.8	389.6	399.3	405.1	414.7
BOSCH LIMITED	23857.8	23545.9	23701.8	23870.9	24026.8	24195.9
BHARAT PETROLEUM CORP LT	678.3	657.9	668.1	674.5	684.7	691.0
CIPLA LTD	538.5	525.8	532.1	542.4	548.7	559.0
COAL INDIA LTD	254.5	249.9	252.2	256.1	258.4	262.2
DR. REDDY'S LABORATORIES	2691.3	2652.8	2672.0	2702.2	2721.4	2751.6
EICHER MOTORS LTD	28130.9	27717.1	27924.0	28087.0	28293.9	28456.9
GAIL (INDIA) LTD	363.3	356.4	359.8	365.1	368.6	373.9
HCL TECHNOLOGIES LTD	850.7	831.8	841.2	855.1	864.6	878.5
HDFC LTD	1642.8	1621.4	1632.1	1640.6	1651.3	1659.8
HDFC BANK LTD	1680.4	1655.7	1668.1	1679.4	1691.8	1703.1
HERO MOTOCORP LIMITED	3748.3	3724.6	3736.4	3746.9	3758.7	3769.2
HINDALCO INDUSTRIES LTD	200.7	192.4	196.5	199.4	203.6	206.5
HINDUSTAN UNILEVER LTD.	1106.5	1089.5	1098.0	1105.5	1113.9	1121.4
INDIABULLS HSG FIN LTD	1085.1	1057.4	1071.3	1082.2	1096.1	1107.0
ICICI BANK LTD.	289.7	286.2	287.9	290.4	292.2	294.7
INDUSIND BANK LIMITED	1560.7	1540.4	1550.6	1560.8	1570.9	1581.1
BHARTI INFRATEL LTD.	409.9	400.6	405.2	409.9	414.5	419.2
INFOSYS LIMITED	975.4	941.0	958.2	973.8	991.0	1006.7
INDIAN OIL CORP LTD	387.5	377.5	382.5	385.6	390.6	393.8
ITC LTD	330.4	326.8	328.6	331.8	333.6	336.9
KOTAK MAHINDRA BANK LTD	958.8	946.0	952.4	961.7	968.1	977.4
LARSEN & TOUBRO LTD.	1741.1	1720.4	1730.8	1740.3	1750.7	1760.2
LUPIN LIMITED	1140.0	1116.9	1128.4	1147.6	1159.1	1178.3
MAHINDRA & MAHINDRA LTD	1390.2	1365.3	1377.7	1386.4	1398.8	1407.4
MARUTI SUZUKI INDIA LTD.	7457.0	7355.7	7406.3	7450.7	7501.3	7545.7
NTPC LTD	163.3	157.8	160.6	162.6	165.4	167.4
OIL AND NATURAL GAS CORP.	160.3	157.8	159.0	161.2	162.4	164.6
POWER GRID CORP. LTD.	212.0	209.6	210.8	212.1	213.2	214.5
RELIANCE INDUSTRIES LTD	1494.4	1477.9	1486.1	1495.3	1503.5	1512.7
STATE BANK OF INDIA	283.6	278.7	281.1	285.4	287.8	292.1
SUN PHARMACEUTICAL IND L	563.8	556.1	560.0	565.9	569.8	575.7
TATA MOTORS LIMITED	457.0	445.5	451.2	456.8	462.5	468.1
TATA MOTORS DVR 'A' ORD	271.6	268.1	269.8	272.5	274.2	276.9
TATA POWER CO LTD	83.0	81.9	82.4	83.3	83.9	84.8
TATA STEEL LIMITED	556.9	551.3	554.1	558.0	560.8	564.8
TATA CONSULTANCY SERV LT	2475.8	2383.4	2429.6	2472.2	2518.4	2561.0
TECH MAHINDRA LIMITED	385.2	377.1	381.1	387.2	391.3	397.4
ULTRATECH CEMENT LIMITED	4151.3	4123.8	4137.5	4153.8	4167.5	4183.8
VEDANTA LIMITED	257.6	251.7	254.7	259.3	262.3	266.9
WIPRO LTD	263.2	254.9	259.0	266.3	270.4	277.7
YES BANK LIMITED	1514.8	1493.6	1504.2	1518.6	1529.2	1543.6
ZEE ENTERTAINMENT ENT LTD	506.5	502.8	504.6	507.5	509.3	512.1

Institutional Equity Research

MARKET LENS

NIFTY 9786 IN FOCUS

July 12, 2017

Support	9700	Stock in Focus	INDUSIND BANK
	9630	Positional Pick	TATA CHEMICALS
Resistance	9840	Intraday Pick	CEAT
	9900	Intraday Pick	VEDANTA

Simple Moving Average

Scrip Name	Close Rate	20-SMA	50-SMA	100-SMA	200-SMA	HIGH_52WEEK	LOW_52WEEK
NIFTY	9786.1	9616.6	9542.5	9305.7	8859.4	9830.1	7893.8
BANK NIFTY	23584.6	23460.2	23183.9	22181.5	20609.5	23964.8	17606.9
SENSEX 50	10148.8	9973.8	9883.8	9625.6	9148.4	10148.8	8144.6
ACC	1650.8	1613.7	1633.6	1545.6	1487.7	1756.7	1256.6
ADANI PORTS	372.7	368.1	356.1	337.5	309.3	382.7	214.6
AMBUJACEM	255.2	244.8	245.3	240.8	233.4	281.7	191.0
ASIANPAINT	1131.8	1133.5	1137.7	1092.6	1048.3	1225.2	849.6
AUROPHARMA	700.0	667.0	618.7	641.0	691.8	895.0	503.1
AXISBANK	506.8	508.5	508.4	506.2	495.7	638.3	424.4
BAJAJ-AUTO	2792.8	2792.7	2854.7	2845.5	2793.9	3120.0	2510.0
BANKBARODA	162.7	163.5	175.1	172.3	166.7	202.5	135.3
BHARTIARTL	395.5	375.5	369.6	361.3	339.6	410.2	283.1
BHEL	139.8	136.7	149.3	157.6	145.5	182.8	116.1
BOSCHLTD	23857.8	23920.2	23702.1	23069.6	22211.1	25670.9	17671.6
BPCL	678.3	656.2	697.2	682.7	659.2	769.3	530.6
CIPLA	538.5	543.9	543.2	564.2	569.9	621.3	480.2
COALINDIA	254.5	250.7	262.8	281.2	296.5	350.0	242.6
DRREDDY	2691.3	2669.4	2615.7	2673.7	2893.2	3689.9	2380.4
EICHERMOT	28130.9	27899.3	28079.8	26511.6	24837.5	30051.0	19411.0
GAIL	363.3	367.0	390.1	388.1	356.6	433.7	268.3
GRASIM	1257.6	1198.0	1165.0	1113.2	1008.2	1375.0	781.9
HCLTECH	850.7	845.1	850.2	846.5	827.5	909.6	710.3
HDFC	1642.8	1639.6	1597.1	1524.7	1417.7	1682.2	1183.2
HDFCBANK	1680.4	1671.4	1622.0	1524.7	1382.1	1748.0	1158.0
HEROMOTOCO	3748.3	3738.1	3654.6	3449.8	3331.7	3880.6	2849.5
HINDALCO	200.7	195.7	195.2	192.9	180.0	210.4	130.0
HINDUNILVR	1106.5	1097.1	1054.2	975.6	908.6	1150.0	782.0
ICICIBANK	289.7	290.4	284.3	268.7	255.0	305.2	215.1
IDEA	84.3	81.9	82.8	90.1	84.3	123.5	65.8
INDUSINDBK	1560.7	1504.8	1473.4	1427.3	1300.0	1571.0	1036.7
INFRA TEL	409.9	386.8	379.5	352.1	353.0	416.2	281.8
INFY	975.4	945.3	953.5	973.3	978.5	1196.1	901.0
ITC	330.4	318.3	304.1	289.2	266.4	367.7	222.0
KOTAKBANK	958.8	970.1	957.1	903.9	831.9	1004.7	692.5
LT	1741.1	1721.1	1739.3	1659.3	1538.4	1834.0	1295.1
LUPIN	1140.0	1102.6	1172.0	1306.0	1396.2	1750.0	1036.2
M&M	1390.2	1379.1	1373.3	1335.6	1299.0	1509.0	1141.4
MARUTI	7457.0	7314.4	7091.3	6592.2	6053.5	7500.5	4291.0
NTPC	163.3	159.3	159.4	161.6	160.9	178.3	142.9
ONGC	160.3	162.5	172.7	180.9	185.7	211.8	144.7
POWERGRID	212.0	209.1	207.5	202.9	194.4	215.0	160.7
RELIANCE	1494.4	1416.6	1368.5	1328.8	1187.4	1550.0	930.0
SBIN	283.6	282.3	288.8	284.0	271.1	315.3	222.1
SUNPHARMA	563.8	543.4	570.9	624.2	654.8	855.0	492.7
TATAMOTORS	457.0	444.9	449.9	455.9	481.2	598.4	417.3
TATAPOWER	83.0	80.8	81.4	83.2	80.0	91.2	67.0
TATASTEEL	556.9	529.1	497.3	487.7	452.6	562.0	329.0
TCS	2475.8	2392.4	2443.8	2436.0	2368.9	2744.8	2051.9
TECHM	385.2	386.1	403.0	435.4	446.7	517.5	356.7
ULTRACEMCO	4151.3	4043.2	4173.7	4059.4	3841.9	4533.1	3050.0
WIPRO	263.2	258.2	260.4	254.2	243.9	288.9	204.1
YESBANK	1514.8	1466.0	1486.8	1502.8	1375.8	1651.9	1090.6
ZEEL	506.5	501.8	512.1	517.7	502.6	589.9	427.7

Institutional Equity Research

NIFTY 9786 IN FOCUS

July 12, 2017

MARKET LENS

Support	9700	Stock in Focus	INDUSIND BANK
	9630	Positional Pick	TATA CHEMICALS
Resistance	9840	Intraday Pick	CEAT
	9900	Intraday Pick	VEDANTA

Bulk Deals Snapshot

Deal Date	Scrip Code	Company	Client Name	Deal Type*	Quantity	Price **
11/7/2017	538365	ADHUNIKIND	VEDANTA RESOURCES PRIVATE LIMITED	B	270,000	99.5
11/7/2017	535467	AIFL	PRADEEP NAHAR	S	127,313	396.2
11/7/2017	535467	AIFL	PRADEEP NAHAR	B	127,313	396.6
11/7/2017	535467	AIFL	CHITRANJAN BAID	S	100,000	395.0
11/7/2017	532331	AJANTPHARM	GANGA EXPORTS	S	2,485,000	1500.1
11/7/2017	532331	AJANTPHARM	SBI MUTUAL FUND	B	1,357,000	1500.0
11/7/2017	524370	BODALCHEM	RAKESHBHAI RAVJIBHAI PATEL	S	2,350,000	165.1
11/7/2017	524370	BODALCHEM	BENGAL FINANCE AND INVESTMENT PVT LTD	B	725,275	166.7
11/7/2017	524370	BODALCHEM	ASHISH RAMESHCHANDRA KACHOLIA	B	1,200,000	165.0
11/7/2017	531158	CATVISION	KAPIL CHOPRA	B	35,400	24.6
11/7/2017	530959	DIANATEA	CHARAMSUKH IT MARKETING PVT LTD	S	70,607	22.5
11/7/2017	530959	DIANATEA	CHARAMSUKH IT MARKETING PVT LTD	B	85,974	22.5
11/7/2017	530959	DIANATEA	BHAAVOSHALI MANAGMENT SERVICES PVT LTD	S	80,000	22.5
11/7/2017	530333	EMGEECA	BHARMAL LODHA	S	44,300	20.2
11/7/2017	540613	GEL	KETAN VALLABHDAS THAKKAR	S	45,000	41.8
11/7/2017	540613	GEL	VINODBHAI MANJIBHAI CHAUHAN	S	21,000	41.6
11/7/2017	540613	GEL	VINODBHAI MANJIBHAI CHAUHAN	B	21,000	41.5
11/7/2017	540613	GEL	SUNIL TOSHNIWAL (HUF)	S	12,000	44.4
11/7/2017	540613	GEL	SUNIL TOSHNIWAL (HUF)	B	18,000	42.1
11/7/2017	540613	GEL	GAYATRI RATHI	B	18,000	41.8
11/7/2017	540613	GEL	JAIKISHAN GIRDHARILAL PUROHIT	B	24,000	41.2
11/7/2017	539787	HCG	BUENA VISTA FUND MGT LLC A/C BUENA VISTA ASIAN OPPOR MASTER F	B	554,278	260.0
11/7/2017	524202	LACTOSE	ALAUKIK MINES AND POWER P LTD	S	73,300	130.0
11/7/2017	540416	OCTAWARE	ARYAMAN BROKING LIMITED	S	40,000	94.6
11/7/2017	540416	OCTAWARE	ARYAMAN BROKING LIMITED	B	4,800	95.2
11/7/2017	540416	OCTAWARE	SAJANKUMAR RAMESHWARLAL BAJAJ	B	33,600	94.1
11/7/2017	536659	PVINFRA	UNNATI INVESTMENT	S	39,053	20.4
11/7/2017	536659	PVINFRA	K VENKATESWARLU	S	15,521	21.0
11/7/2017	536659	PVINFRA	K VENKATESWARLU	B	47,577	20.5
11/7/2017	538707	RCCL	SREE GOPAL BAJORIA	S	20,100	46.0
11/7/2017	533608	RDBRL	GEDALIA MULTITRADING PRIVATE LIMITED	S	137,268	64.0
11/7/2017	533608	RDBRL	GEDALIA MULTITRADING PRIVATE LIMITED	B	137,268	64.1
11/7/2017	540590	RIDDHICORP	RAJANBHAI BIPINBHAI SHAH	B	20,000	132.5
11/7/2017	540590	RIDDHICORP	BEELINE BROKING LIMITED	S	41,000	133.2
11/7/2017	540590	RIDDHICORP	BEELINE BROKING LIMITED	B	1,000	136.0
11/7/2017	540590	RIDDHICORP	SEFALI SUNIL PANDYA	B	22,000	134.0
11/7/2017	540590	RIDDHICORP	BISHAL P MORE	S	52,000	134.4
11/7/2017	517548	STARLITE	BHANWARI DEVI VYAS	S	75,488	48.5
11/7/2017	517548	STARLITE	BHANWARI DEVI VYAS	B	98,706	48.7
11/7/2017	503657	VEERENRGY	KALPESH DINESHBHAI PATEL	S	65,250	24.3
11/7/2017	503657	VEERENRGY	KALPESH DINESHBHAI PATEL	B	65,250	24.2
11/7/2017	503657	VEERENRGY	DIVYABEN HITESHBHAI GANGANI	S	72,423	24.3
11/7/2017	503657	VEERENRGY	DIVYABEN HITESHBHAI GANGANI	B	72,423	24.3
11/7/2017	503657	VEERENRGY	HARISHKUMAR KANTILAL PATEL	S	58,845	24.2
11/7/2017	503657	VEERENRGY	HARISHKUMAR KANTILAL PATEL	B	58,845	24.3
11/7/2017	503657	VEERENRGY	UDAY ANUBHAI SHAH	S	75,319	24.3
11/7/2017	503657	VEERENRGY	UDAY ANUBHAI SHAH	B	75,319	24.3

*B - Buy, S - Sell, ** = Weighted Average Trade Price / Trade Price

Institutional Equity Research

MARKET LENS

NIFTY 9786 IN FOCUS

July 12, 2017

Support	9700	Stock in Focus	INDUSIND BANK
	9630	Positional Pick	TATA CHEMICALS
Resistance	9840	Intraday Pick	CEAT
	9900	Intraday Pick	VEDANTA

Monthly Economic Calendar

Date Time	Country	Event	Period	Prior
12-Jul-17	IN	CPI YoY	Jun	--
12-Jul-17	IN	Industrial Production YoY	May	--
13-Jul-17	US	Initial Jobless Claims	8-Jul	--
14-Jul-17	JN	Industrial Production MoM	May F	--
14-Jul-17	US	CPI MoM	Jun	--
14-Jul-17	IN	Wholesale Prices YoY	Jun	--
18-Jul-17	UK	CPI YoY	Jun	--
18-Jul-17	EC	CPI YoY	Jun F	--
20-Jul-17	AU	Employment Change	Jun	--
20-Jul-17	AU	Unemployment Rate	Jun	--
20-Jul-17	EC	ECB Main Refinancing Rate	20-Jul	--
20-Jul-17	US	Initial Jobless Claims	15-Jul	--
25-Jul-17	IN	Eight Infrastructure Industries	Jun	--
26-Jul-17	UK	GDP QoQ	2Q A	--
26-Jul-17	UK	GDP YoY	2Q A	--
26-Jul-17	US	FOMC Rate Decision (Upper Bound)	26-Jul	1.3%
27-Jul-17	US	Initial Jobless Claims	22-Jul	--
28-Jul-17	JN	Jobless Rate	Jun	--
28-Jul-17	US	GDP Annualized QoQ	2Q A	--
31-Jul-17	JN	Industrial Production MoM	Jun P	--
31-Jul-17	IN	Fiscal Deficit INR Crore	Jun	--

Institutional Equity Research

MARKET LENS

NIFTY 9786 IN FOCUS

July 12, 2017

Support	9700	Stock in Focus	INDUSIND BANK
	9630	Positional Pick	TATA CHEMICALS
Resistance	9840	Intraday Pick	CEAT
	9900	Intraday Pick	VEDANTA

Corporate Actions

Ex-Dividend

Company Name	Ex-Date	Purpose
Canara Bank	12-Jul-17	Annual General Meeting/Dividend - Re 1 Per Share
Balkrishna Paper Mills Limited	12-Jul-17	Annual General Meeting
Kotak Mahindra Bank Limited	12-Jul-17	Annual General Meeting/Dividend-Re 0.60 Per Share
Dr. Lal Path Labs Ltd.	12-Jul-17	Annual General Meeting/Dividend - Rs 1.70 Per Share
Sheela Foam Limited	12-Jul-17	Annual General Meeting
Persistent Systems Limited	12-Jul-17	Annual General Meeting/Dividend - Rs 3/- Per Share
SREI Infrastructure Finance Limited	12-Jul-17	Dividend - Re 0.50 Per Share
Shreyas Shipping & Logistics Limited	12-Jul-17	Dividend - Re 1/- Per Share
Karur Vysya Bank Limited	12-Jul-17	Annual General Meeting/ Dividend ₹ ½ Rs 2.60 Per Share
City Union Bank Limited	13-Jul-17	Bonus 1:10
Zuari Global Limited	13-Jul-17	Dividend - Re 1 Per Share
Dewan Housing Finance Corporation Limited	13-Jul-17	Annual General Meeting/Dividend - Rs 3/- Per Share
Andhra Bank	13-Jul-17	Annual General Meeting
Camlin Fine Sciences Limited	13-Jul-17	Annual General Meeting
Atul Limited	13-Jul-17	Dividend - Rs 10/- Per Share
Coromandel International Limited	13-Jul-17	Annual General Meeting/Dividend - Rs 5/- Per Share
Gujarat Lease Financing Limited	13-Jul-17	Annual General Meeting
Gujarat Sidhee Cement Limited	13-Jul-17	Annual General Meeting
IIFL Holdings Limited	13-Jul-17	Annual General Meeting
Kirloskar Brothers Limited	13-Jul-17	Dividend - Re 1/- Per Share
Mahindra Lifespace Developers Limited	13-Jul-17	Annual General Meeting/ Dividend - Rs 6/- Per Share
Mafatlal Finance Limited	13-Jul-17	Annual General Meeting
Lumax Industries Limited	13-Jul-17	Annual General Meeting/Dividend - Rs 14.50 Per Share
Mahindra & Mahindra Limited	13-Jul-17	Annual General Meeting/Dividend - Rs 13/- Per Share
Larsen & Toubro Limited	13-Jul-17	Bonus 1:2
Info Edge (India) Limited	13-Jul-17	Annual General Meeting/ Dividend - Rs 1.50 Per Share
RPG Life Sciences Limited	13-Jul-17	Annual General Meeting/Dividend - Rs 2.80 Per Share

Result Calendar

Company Name	Board Meeting Date	Purpose
Bajaj Corp Limited	12-Jul-17	Results
Cyient Limited	13-Jul-17	Results
Goa Carbon Limited	13-Jul-17	Results/Others
Grand Foundry Limited	13-Jul-17	Results
Hatsun Agro Product Limited	13-Jul-17	Results/Dividend
Reliance Industrial Infrastructure Limited	13-Jul-17	Results
Tata Consultancy Services Limited	13-Jul-17	Results/Dividend
Bhansali Engineering Polymers Limited	14-Jul-17	Results/Others
Infomedia Press Limited	14-Jul-17	Results
Infosys Limited	14-Jul-17	Results

Institutional Equity Research

MARKET LENS

NIFTY		9786	IN FOCUS	
Support	9700		Stock in Focus	INDUSIND BANK
	9630		Positional Pick	TATA CHEMICALS
Resistance	9840		Intraday Pick	CEAT
	9900		Intraday Pick	VEDANTA

July 12, 2017

Result Calendar

Company Name	Board Meeting Date	Purpose
DCB Bank Limited	15-Jul-17	Results
Gruh Finance Limited	15-Jul-17	Results
The Karnataka Bank Limited	15-Jul-17	Results
ACC Limited	17-Jul-17	Results/Dividend
ANG Industries Limited	17-Jul-17	Results/Others
Capri Global Capital Limited	17-Jul-17	Results
Hindustan Media Ventures Limited	17-Jul-17	Results
Indian Metals & Ferro Alloys Limited	17-Jul-17	Results
Jubilant Foodworks Limited	17-Jul-17	Results
Jubilant Life Sciences Limited	17-Jul-17	Results
Linde India Limited	17-Jul-17	Results
Prakash Industries Limited	17-Jul-17	Results
SIL Investments Limited	17-Jul-17	Results
CRISIL Limited	18-Jul-17	Results/Dividend
HIL Limited	18-Jul-17	Results
Hindustan Unilever Limited	18-Jul-17	Results
HT Media Limited	18-Jul-17	Results
Jubilant Life Sciences Limited	18-Jul-17	Results
Maharashtra Scooters Limited	18-Jul-17	Results
Sasken Technologies Limited	18-Jul-17	Results
UltraTech Cement Limited	18-Jul-17	Results
Bajaj Finance Limited	19-Jul-17	Results
Bajaj Finserv Limited	19-Jul-17	Results
GNA Axles Limited	19-Jul-17	Results
Havells India Limited	19-Jul-17	Results
KPIT Technologies Limited	19-Jul-17	Results
Mastek Limited	19-Jul-17	Results
MindTree Limited	19-Jul-17	Results
Sutlej Textiles and Industries Limited	19-Jul-17	Results
ABB India Limited	20-Jul-17	Results
Bajaj Auto Limited	20-Jul-17	Results
Bajaj Holdings & Investment Limited	20-Jul-17	Results
Kansai Nerolac Paints Limited	20-Jul-17	Results
Kotak Mahindra Bank Limited	20-Jul-17	Results
Mahindra CIE Automotive Limited	20-Jul-17	Results
NIIT Technologies Limited	20-Jul-17	Results
Nucleus Software Exports Limited	20-Jul-17	Results
R. S. Software (India) Limited	20-Jul-17	Results/Others
RBL Bank Limited	20-Jul-17	Results
Wipro Limited	20-Jul-17	Results
Ashok Leyland Limited	21-Jul-17	Results
Atul Limited	21-Jul-17	Results
Can Fin Homes Limited	21-Jul-17	Results

Institutional Equity Research

MARKET LENS

NIFTY	9786	IN FOCUS	
Support	9700	Stock in Focus	INDUSIND BANK
	9630	Positional Pick	TATA CHEMICALS
Resistance	9840	Intraday Pick	CEAT
	9900	Intraday Pick	VEDANTA

July 12, 2017

Reliance Securities Limited (RSL), the broking arm of Reliance Capital is one of the India's leading retail broking houses. Reliance Capital is amongst India's leading and most valuable financial services companies in the private sector. Reliance Capital has interests in asset management and mutual funds, life and general insurance, commercial finance, equities and commodities broking, wealth management services, distribution of financial products, private equity, asset reconstruction, proprietary investments and other activities in financial services. The list of associates of RSL is available on the website www.reliancecapital.co.in. RSL is registered as a Research Analyst under SEBI (Research Analyst) Regulations, 2014

General Disclaimers: This Research Report (hereinafter called 'Report') is prepared and distributed by RSL for information purposes only. The recommendations, if any, made herein are expression of views and/or opinions and should not be deemed or construed to be neither advice for the purpose of purchase or sale of any security, derivatives or any other security through RSL nor any solicitation or offering of any investment /trading opportunity on behalf of the issuer(s) of the respective security(ies) referred to herein. These information / opinions / views are not meant to serve as a professional investment guide for the readers. No action is solicited based upon the information provided herein. Recipients of this Report should rely on information/data arising out of their own investigations. Readers are advised to seek independent professional advice and arrive at an informed trading/investment decision before executing any trades or making any investments. This Report has been prepared on the basis of publicly available information, internally developed data and other sources believed by RSL to be reliable. RSL or its directors, employees, affiliates or representatives do not assume any responsibility for, or warrant the accuracy, completeness, adequacy and reliability of such information / opinions / views. While due care has been taken to ensure that the disclosures and opinions given are fair and reasonable, none of the directors, employees, affiliates or representatives of RSL shall be liable for any direct, indirect, special, incidental, consequential, punitive or exemplary damages, including lost profits arising in any way whatsoever from the information / opinions / views contained in this Report.

Risks: Trading and investment in securities are subject to market risks. There are no assurances or guarantees that the objectives of any of trading / investment in securities will be achieved. The trades/ investments referred to herein may not be suitable to all categories of traders/investors. The names of securities mentioned herein do not in any manner indicate their prospects or returns. The value of securities referred to herein may be adversely affected by the performance or otherwise of the respective issuer companies, changes in the market conditions, micro and macro factors and forces affecting capital markets like interest rate risk, credit risk, liquidity risk and reinvestment risk. Derivative products may also be affected by various risks including but not limited to counter party risk, market risk, valuation risk, liquidity risk and other risks. Besides the price of the underlying asset, volatility, tenor and interest rates may affect the pricing of derivatives.

Disclaimers in respect of jurisdiction: The possession, circulation and/or distribution of this Report may be restricted or regulated in certain jurisdictions by appropriate laws. No action has been or will be taken by RSL in any jurisdiction (other than India), where any action for such purpose(s) is required. Accordingly, this Report shall not be possessed, circulated and/or distributed in any such country or jurisdiction unless such action is in compliance with all applicable laws and regulations of such country or jurisdiction. RSL requires such recipient to inform himself about and to observe any restrictions at his own expense, without any liability to RSL. Any dispute arising out of this Report shall be subject to the exclusive jurisdiction of the Courts in India.

Disclosure of Interest: The research analysts who have prepared this Report hereby certify that the views /opinions expressed in this Report are their personal independent views/opinions in respect of the securities and their respective issuers. None of RSL, research analysts, or their relatives had any known direct /indirect material conflict of interest including any long/short position(s) in any specific security on which views/opinions have been made in this Report, during its preparation. RSL's Associates may have other potential/material conflict of interest with respect to any recommendation and related information and opinions at the time of publication of research report. RSL, its Associates, the research analysts, or their relatives might have financial interest in the issuer company(ies) of the said securities. RSL or its Associates may have received a compensation from the said issuer company(ies) in last 12 months for the brokerage or non brokerage services. RSL, its Associates, the research analysts or their relatives have not received any compensation or other benefits directly or indirectly from the said issuer company(ies) or any third party in last 12 months in any respect whatsoever for preparation of this report.

The research analysts has served as an officer, director or employee of the said issuer company(ies)?: No

RSL, its Associates, the research analysts or their relatives holds ownership of 1% or more, in respect of the said issuer company(ies)?: No

Copyright: The copyright in this Report belongs exclusively to RSL. This Report shall only be read by those persons to whom it has been delivered. No reprinting, reproduction, copying, distribution of this Report in any manner whatsoever, in whole or in part, is permitted without the prior express written consent of RSL.

RSL's activities were neither suspended nor have defaulted with any stock exchange with whom RSL is registered. Further, there does not exist any material adverse order/judgments/strictures assessed by any regulatory, government or public authority or agency or any law enforcing agency in last three years. Further, there does not exist any material enquiry of whatsoever nature instituted or pending against RSL as on the date of this Report.

Important These disclaimers, risks and other disclosures must be read in conjunction with the information / opinions / views of which they form part of.

RSL CIN: U65990MH2005PLC154052. SEBI registration no. (Stock Brokers: NSE - INB / INF / INE 231234833; BSE - INB / INF / INE 011234839, Depository Participants: CDSL IN-DP-257-2016 IN-DP-NSDL-363-2013, Research Analyst: INH000002384); AMFI ARN No.29889.