

Technical Report

Closing Brief

Benchmark indices in yesterday's trading session settled higher as domestic markets took its cues from the international markets as recovery was seen in Asian and European markets. Nifty finally settled at 9136.40 levels up by 32.90 points or 0.36%.

Technical Build up

- ❖ Bullish candle with increase in volume
- ❖ Sell crossover in oscillators.
- ❖ Lower band of Bollinger exist at 9154
- ❖ Crucial moving average of 20/50 SMA are at 9154 and 9010
- ❖ 200 SMA trend deciding level exist at 8605

Outlook for the day

Indian Equity market closed marginally higher in a volatile session yesterday in absence of any major trigger. Rebound in crude oil prices from previous sell-off and Japan reporting stronger-than-expected exports in March bolstered sentiments. Hope of GST implementation also lifted the market. On the technical front, Nifty formed a Bullish candle on the daily chart following previous days bullish Hammer formation. However, till the market is not able to cross 9225 it might remain range bound. Based on current formation, on immediate basis Nifty has scope to move up to 9200/9220. Dismissal of 9060-9075 would drag the market sentiment as it coincides with the 161% retracement of the small up move from 9120.25 to 9217.90). During the day support for Nifty is placed around 9080 levels and the next support is placed around 9030 levels. On the higher side the immediate resistance is placed around 9180 levels and the next resistance is placed around 9230 levels. On the option front data signifies fresh Put writing at 9100 and 9050 strike which may support the market on declines while intact Call writing at 9200 and 9250 strikes are restricting its upside momentum. Option band gives the trading band in between 9050-9250.



Technical & Derivative Report

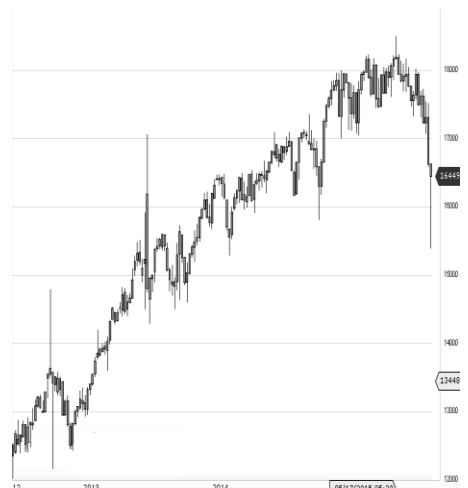
World Indices	LTP	Daily Ch(Pts)	Daily Ch(%)
Dow Jones	20578	174	0.85
Nasdaq	5916	53	0.92
S&P 500	2355	17	0.76
FTSE 100	7118	4	0.06
DAX	12027	10	0.09
Hang Seng	24144	87	0.36
Nikkei	18573	142	0.77
Sensex	29422	85	0.29
Nifty	9136	32	0.36

Commodity /Forex	LTP	Daily Ch(Pts)	Daily Ch(%)
Gold (\$/Oz)	1282.40	-1.40	-0.11
Silver (\$/Oz)	17.98	-0.04	-0.24
Copper(USD/lb.)	256.20	0.50	0.20
Brent Crude(USD/bbl)	53.07	0.08	0.15
USD/INR	64.56	-0.01	-0.03
USD/YEN	109.22	-0.10	-0.09
USD/EUR	1.0718	0.0001	0.01

Support/Resistance levels for Indian Equity Indices					
	S1	S2	CMP	R1	R2
Sensex	29235	29070	29422	29570	29735
Nifty	9080	9030	9136	9180	9230
Nifty (Fut)	9105	9055	9162	9205	9255

Pivot Level	
Sensex	29405
Nifty	9127

US: US market rose on Thursday as more companies released quarterly results while Treasury Secretary Steven Mnuchin said the administration was close to "major tax reform." Technically DJIA is presently trading at the 5th leg through Elliot wave count with negative divergence in oscillators.



Increase in OI with Increase in Price (Long Buildup)					
Symbol	Prev OI	Curr OI	OI Chg (%)	Curr Pr.	Pr.Chg (%)
INDIGO	1816	2148	18.3	1131.3	3.6
JETAIR					
WAYS	5223	5568	6.6	509.55	5.7
GODREJI					
ND	1485	1557	4.9	528	1.1
ABIRLA					
NUVO	7894	8272	4.8	1618	3.4
INDIACE					
M	6957	7289	4.8	191.1	9.1

Increase in OI with Decrease in Price (Short Buildup)					
Symbol	Prev OI	Curr OI	OI Chg (%)	Curr Pr.	Pr.Chg (%)
YESBAN					
K	12742	14720	15.5	1556.9	[3.5]
ICICIBA					
NK	27115	28339	4.5	275.3	[2.1]
RPOWE					
R	4885	4939	1.1	47	[0.3]

Nifty gained by 0.36% with Nifty future shaded 3.0 lakh shares in open interest and stock future added 508.8 Lakh shares in open interest.

- Nifty PCR increased to 1.11 from 1.07
- Total Nifty Calls shaded 0.6 lakh shares in open interest.
- Total Nifty Puts added 25.3 lakh shares in open interest.
- Maximum open interest (Nifty) in Calls for Jan series is at 9200 and 9100 put.
- FII's sold net Rs.168.84Cr(provisional), while DIIs bought net Rs.8.82 Cr in cash market.
- FII sold net Rs.388.10 Cr in F&O
- Securities in Ban Period: BHARATFIN, HDIL, IBREALEST, INDIACEM, INFIBEAM, IRB, JINDALSTEL, JPASSOCIAT, JSWENERGY, RELCAPITAL, TV18BRDCST & UJJIVAN

Nifty Tracker

PARTICULARS	20/04/2017	19/04/2017	18/04/2017	17/04/2017
Spot	9136.4	9103.5	9105.15	9139.3
% Change in Spot	0.36%	-0.02%	-0.37%	-0.13%
Nifty(FUT) Apr	9162.6	9135	9123.35	9168.35
Nifty(FUT) Apr Vol.	85729	95969	167744	67414
Nifty(FUT) Apr - OI	19533900	19924875	19996125	20290425
Nifty(FUT) May	9182.95	9157.5	9149.25	9192.45
Nifty(FUT) May Vol.	6362	7447	11089	3468
Nifty(FUT) May - OI	2983650	2898825	2726550	2550900

Trade Statistics for 20/04/2017

PARTICULARS	NO. OF CONTRACTS	TURNOVER (RS. CR.)	PUT CALL RATIO
NSE Index Futures	1,71,035	13044	-
NSE Stock Futures	6,62,509	52790	-
NSE Index Options	76,80,795	6,32,562.11	-
NSE Stock Options	4,88,045	40781	0.45
NSE F&O Total Turnover	90,02,384	739,178	0.78
NSE Cash Turnover	-	25,390.83	-
BSE Cash Turnover	-	4028.59	-
Total Turnover	-	768598	-

FII Corner (F&O)

FII NET BUYING/SELLING & CHANGE IN OPEN INTEREST (Cr. Rupee)						
PARTICULARS	20/04/2017		19/04/2017		18/04/2017	
	Net Buying /Selling	Change In Open interest	Net Buying /Selling	Change In Open interest	Net Buying /Selling	Change In Open interest
Index Future	-239	256	-1027	-43	-245	-287
Index option	323	115	807	1915	1393	2187
Stock Future	-478	-276	269	101	160	-676
Stock option	6	201	-64	237	113	375
Total	-388	296	-15	2210	1421	1598

Market Open Interest

ADDITION/REDUCTION IN MARKET OPEN INTEREST					
Contracts	20/04/2017	19/04/2017	18/04/2017	17/04/2017	13/04/2017
Index Futures	-470	109	18	-52	-231
Index Options	1411	1919	-885	641	187
Stock Futures	13219	6788	7419	-20744	17469
Stock Options	379	564	79	-2634	412
F&O Total	14539	9381	6631.34	-22788.71	17836.18

Nifty Option Open Interest Statistics

NIFTY OPTIONS HIGHEST ADDITION IN OPEN INTEREST						
Expiry	Strike	Option Type	Settlement Price	Volume	Open Interest	Change In OI
27-Apr-17	9100	PE	30.95	209347	5905500	506100
27-Apr-17	8800	PE	2.7	64862	2844225	505425
27-Apr-17	9050	PE	18.9	43352	1443750	493650
27-Apr-17	9250	CE	17.5	51963	1298175	294675
27-Apr-17	9150	PE	46.85	21515	978150	231450
25-May-17	9100	PE	88	10988	1229025	178425
25-May-17	8800	PE	26	7594	1832625	164475
25-May-17	8700	PE	16.85	8718	1373550	158475
25-May-17	9200	CE	108.25	10057	798375	157275
25-May-17	9000	CE	234.9	3907	545925	140625

NIFTY OPTIONS HIGHEST ADDITION IN OPEN INTEREST						
Expiry	Strike	Option Type	Settlement Price	Volume	Open Interest	Change In OI
27-Apr-17	9100	CE	88.65	143120	3027825	-466200
27-Apr-17	9400	CE	1.95	47872	2986725	-308475
27-Apr-17	9500	CE	0.7	21609	3463500	-289200
27-Apr-17	9000	CE	168.55	17349	1201050	-218550
27-Apr-17	8600	PE	1.55	16102	1967850	-139575
27-Apr-17	9200	PE	72.15	84389	2934750	-131925
27-Apr-17	9500	PE	334	1780	506850	-95625
27-Apr-17	8400	CE	758.65	1495	304725	-78525
27-Apr-17	8200	CE	956.3	1116	479850	-65175
27-Apr-17	8000	CE	1157.2	880	946125	-61575

Stock Option Open Interest Statistics

STOCK OPTIONS WITH HIGHEST ADDITION IN OPEN INTEREST							
Symbol	Expiry	Strike	Option Type	Settl. Price	Volume	Open Interest	Change in OI
GMRINFRA	27-Apr-17	20	CE	0.05	157	9720000	2250000
INDIACEM	27-Apr-17	200	CE	2.3	3966	1645000	1568000
PNB	27-Apr-17	150	PE	2.1	1313	5341000	1302000
ICICIBANK	27-Apr-17	280	CE	2.05	4051	3715000	1215000
INDIACEM	27-Apr-17	190	CE	5.2	5152	1417500	1214500
RCOM	27-Apr-17	35	CE	0.45	425	6444000	1176000
INDIACEM	27-Apr-17	180	PE	1.9	1709	1169000	1169000
GMRINFRA	25-May-17	17.5	CE	0.85	47	2250000	990000
ICICIBANK	27-Apr-17	285	CE	1.15	2094	2722500	945000
BEL	25-May-17	200	CE	3.4	235	949500	927000

STOCK OPTIONS WITH HIGHEST REDUCTION IN OPEN INTEREST							
Symbol	Expiry	Strike	Option Type	Settl. Price	Volume	Open Int.	Change in OI
HINDALCO	27-Apr-17	170	PE	0.15	1293	1785000	-1232000
SUZLON	27-Apr-17	20	PE	0.55	59	6480000	-1020000
JISLJALEQS	27-Apr-17	110	CE	5.2	1843	1755000	-918000
ADANIPOWER	27-Apr-17	42.5	CE	0.05	77	12580000	-900000
ICICIBANK	27-Apr-17	350	PE	75.05	594	917500	-870000
INDIACEM	27-Apr-17	175	CE	16.1	762	311500	-791000
DLF	27-Apr-17	170	CE	4.95	1304	3355000	-735000
JPASSOCIAT	27-Apr-17	15	CE	0.05	19	27880000	-680000
APOLLOTYRE	27-Apr-17	240	CE	5.45	2681	918000	-678000
ENGINEERSIN	27-Apr-17	165	CE	6.2	523	616000	-672000

Research Team

Name	Designation	Email ID	Contact No.
Paras Bothra	President Equity Research	paras@ashikagroup.com	+91 22 6611 1704
Krishna Kumar Agarwal	Equity Research Analyst	krishna.a@ashikagroup.com	+91 33 4036 0646
Partha Mazumder	Equity Research Analyst	partha.m@ashikagroup.com	+91 33 4036 0647
Arijit Malakar	Equity Research Analyst	amalakar@ashikagroup.com	+91 33 4036 0644
Kapil Jagasia, CFA	Equity Research Analyst	kapil.j@ashikagroup.com	+91 22 6611 1715
Tirthankar Das	Technical & Derivative Analyst	tirthankar.d@ashikagroup.com	+91 33 4036 0645

Ashika Stock Broking Limited ("ASBL") or Research Entity has started its journey in the year 1994 and is engaged in the business of broking services, depository services, distributor of financial products (Mutual fund, IPO & Bonds). This research report has been prepared and distributed by ASBL in the sole capacity of a Research Analyst (Reg No. INH000000206) of SEBI (Research Analyst) Regulations 2014. ASBL is a wholly owned subsidiary of Ashika Global Securities (P) Ltd., a RBI registered non-deposit taking NBFC Company. Ashika group (details is enumerated on our website www.ashikagroup.com) is an integrated financial service provider inter alia engaged in the business of Investment Banking, Corporate Lending, Commodity Broking, Debt Syndication & Other Advisory Services.

There were no significant and material disciplinary actions against ASBL taken by any regulatory authority during last three years.

Disclosure

ASBL or its associates, its Research Analysts (including their relatives) may have financial interest in the subject company(ies). However, the said financial interest is not limited to having an open stock market position in /acting as advisor to /having a loan transaction with the subject company(ies) apart from registration as clients.

- ASBL or its Research Analysts (including their relatives) do not have any actual / beneficial ownership of 1% or more of securities of the subject company(ies) at the end of the month immediately preceding the date of publication of this report or date of the public appearance. However ASBL's associates may have actual / beneficial ownership of 1% or more of securities of the subject company(ies).
- ASBL or their Research Analysts (including their relatives) do not have any other material conflict of interest at the time of publication of this research report or date of the public appearance. However ASBL's associates might have an actual / potential conflict of interest (other than ownership).
- ASBL or its associates may have received compensation for investment banking, merchant banking, and brokerage services and for other products and services from the subject companies during the preceding 12 months. However, ASBL or its associates or its Research analysts (forming part of Research Desk) have not received any compensation or other benefits from the subject companies or third parties in connection with the research report. Moreover, Research Analysts have not received any compensation from the companies mentioned herein in the past twelve months.
- ASBL or their Research Analysts have not managed or co-managed public offering of securities for the subject company(ies) in the past twelve months. However ASBL's associates may have managed or co-managed public offering of securities for the subject company(ies) in the past twelve months.
- Research Analysts have not served as an officer, director or employee of the companies mentioned in the report.
- Neither ASBL nor its Research Analysts have been engaged in market making activity for the companies mentioned in the report.

Disclaimer

The research recommendation and information herein are solely for the personal information of the authorized recipient and does not construe to be an offer documents or any investment, legal or taxation advice or solicitation of any action based upon it. This report is not for public distribution or use by any person or entity, where such distribution, publication, availability or use would be contrary to law, regulation or subject to any registration or licensing requirement. We will not treat recipients as customer by virtue of their receiving this report. The report is based upon the information obtained from public sources that we consider reliable, but we do not guarantee its accuracy or completeness. ASBL shall not be in anyways responsible for any loss or damage that may arise to any such person from any inadvertent error in the information contained in this report. The recipients of this report should rely on their own investigations.