

Equity	Latest	% Chg	NSE Sect. Indices	Latest	% Chg
Nifty	10364	0.39	NIFTY IT	10854.30	(0.07)
Sensex	33266	0.33	NIFTY BANK	24988.55	0.60
DowJones	23349	(0.36)	NIFTY 500	9165.10	0.67
Nasdaq	6699	(0.03)	NIFTY FMCG	25637.60	(0.69)
Hangseng	28272	(0.23)	NIFTY INFRA	3581.60	0.98
Shanghai	3381	(0.28)	NIFTY AUTO	11426.50	0.96
Nikkei	6945	(0.32)	NIFTY ENERGY	14531.85	1.01
Strait Times	3381	0.14	NIFTY PHARMA	9754.85	1.09
Kospi	2511	0.38	Advances / Declines	BSE	NSE
Taiwan	10791	0.32	Advances	1693	1146
FTSE	7488	(0.23)	Declines	1021	601
CAC	5494	(0.01)	Unchanged	174	68
DAX	13230	0.09	Total	2888	1815

Nifty Gainers		
Company	Price(Rs)	Chg(%)
YESBANK	315.15	2.64
LUPIN	1025.00	2.39
INFRADEL	427.70	2.19
EICHERMOT	32430.00	1.94
TATAMOTORS	437.60	1.79

Nifty Losers		
Company	Price(Rs)	Chg(%)
HCLTECH	838.75	(1.89)
HINDUNILVR	1237.70	(1.78)
ITC	265.20	(1.54)
WIPRO	293.00	(1.33)
M&M	1372.10	(1.12)

Vol. Shockers	Last Day (Lakh)	2 Wk Avg. (Lakh)	Vol. Ch. (Times)
HONAUT	0.06	0.0	9
SUPRAJIT	3.91	0.5	8
PIIND	12.25	1.5	8
SAGCEM	0.88	0.1	8
GAYAPROJ	15.09	2.2	7

Indian Forex	Closing	Chg	% Chg
USD/INR	64.934	(0.159)	(0.24)
GBP/INR	85.375	(0.008)	(0.01)
EUR/INR	75.427	(0.257)	(0.34)
JPY/INR	57.130	0.130	0.23

Precious Metal	Closing	Chg (Rs.)
Gold (Rs/10gm)	29258	8
Silver (Rs/1kg)	38850	(250)

Commodities	Price	% Chg.
Crude (US\$/BBL)	54.1	0.20
Brent (US\$/BBL)	60.8	0.68
Gold (US/oz)	1276.8	0.36
Silver (US\$/oz)	16.9	0.42
Copper (US\$/MT)	6831.5	(1.92)
Alum (US\$/MT)	2119.0	(2.57)
Zinc(US\$/MT)	3201.0	(3.03)

ADR	Cl. Values	% Chg.
ICICI Bank	8.80	(0.20)
HDFC Bank	90.20	1.90
Infosys	15.00	(0.10)
Tata Steel Ltd	21.00	(0.10)
Dr. Deddy's Labs	35.70	0.70
Wipro	5.20	0.20
Tata Motors	32.30	1.50

Market Sensor

US Market fell on Monday after a report surfaced saying the House is considering a plan that would gradually lower the U.S. corporate tax rate. Dow Jones Industrial Average was down 0.36% or 85.45 points at 23348.74. Nasdaq Composite was down 0.03% or 2.30 points at 6698.97. Standard & Poor's 500 was down 0.32% or 8.24 points at 2572.83.

Indian Equity market managed to end with modest gains in a range bound session, thanks to firm global markets and supportive local cues. Consumer Durable, PSU Banks, Realty, Oil & Gas, Pharma and Auto stocks were major gainers. Nifty ended the previous day with a gain of 0.39% or 40.60 points 10363.65. On Monday's trading session, FIIs sold net Rs.186.04 Cr in cash market and bought Rs.700.14 Cr in derivative segment. Whereas, DII bought net Rs.139.68 Cr in cash segment.

Global News

❖Growth in China's manufacturing sector cooled more than expected in October in the face of a weakening property market and tighter pollution rules that are forcing many steels mills, smelters and factories to curtail production over the winter. (Reuters)

❖Japan's industrial output fell less than expected in September and companies expect output to rise in October - keeping the economy on an expansion path. (Reuters)

❖Four of China's 'Big Five' state-owned banks reported higher quarterly profits and slower growth in bad loans, helped by a resilient economy and checks on the shadow banking sector. (Reuters)

❖Inflation in five German regions weakened in October, data showed on Monday, lending support to the European Central Bank's decision to start reducing monetary stimulus for the euro zone only slowly. (Reuters)

❖Japan's retail sales rose in September at the fastest pace in three months as shoppers spent more on clothes and daily goods in a sign that consumer spending remains strong due to a tight labour market. (Reuters)

Economic News

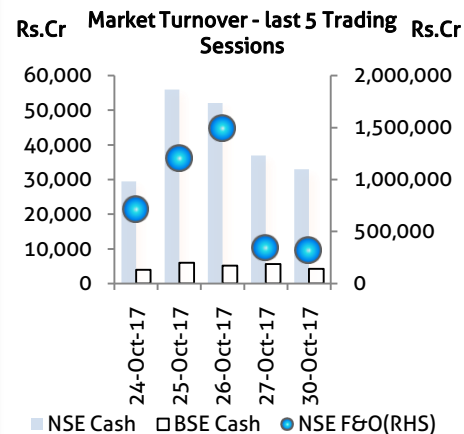
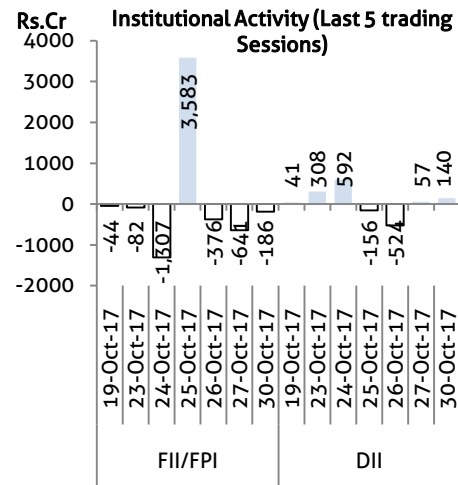
- ❖ The air passengers traffic is likely to post a better growth in H2FY18 on the back of an expected increase in the spare engines supply for A320 Neo operators coupled with likely addition of eight leased aircraft in the Jet Airways fleet by March next year, a report has said.
- ❖ Non-major ports in the country have edged past major ports in cargo volumes growth over the past five years.
- ❖ The economy is likely to pick up to 6 per cent in the second quarter of the current fiscal, owing to an uptick in several macroeconomic indicators like trade, transport and communication, says a report.
- ❖ The Reserve Bank is likely to cut rates at its December 6 policy review meet as retail inflation remains muted and the October number is expected to be about 3.3 per cent, says a report.
- ❖ NITI Aayog Vice Chairman Rajiv Kumar on Monday said policy formulation and designs are often "very elitist" in India and that a small minority drives the policy paradigm for the greater majority.
- ❖ Union Railway Minister Piyush Goyal on Monday said the Railways was investing Rs 3,500 crore in Jharkhand in the current financial year.
- ❖ The Ministry of Finance and the World Bank on Monday announced the signing of a loan agreement worth \$200 million for the Assam Agribusiness and Rural Transformation Project.
- ❖ The government has decided to increase the basic customs duty on polyester fabric to 20 per cent from 10 per cent. Industry experts said this would retain the competitiveness of the domestic manufacturing industry.
- ❖ Inviting UAE investors to join hands with India and be part of its infrastructure growth story, Union Minister Nitin Gadkari said two mega initiatives worth Rs 24 lakh crore - Sagarmala and Bharatmala - are going to be game changers.
- ❖ The country's tea output is estimated to have increased by 5.69 per cent to 1.67 lakh tonnes in August this year as against 1.58 lakh tonnes in the year-ago period, according to the Tea Board.
- ❖ Confirming fears of a 'jobless growth', domestic rating agency Care Ratings said employment generation has not kept pace with GDP expansion, and termed it as a "major concern".

Domestic News

- ❖ Torrent Pharmaceuticals Ltd is likely in advanced discussions to acquire the domestic formulations business of Unichem Laboratories Ltd for Rs3,200-3,300 crore.
- ❖ Bain Capital is in talks with Axis Bank Ltd to invest between \$750 million and \$1 billion (Rs4,800-6,400 crore), reports The Economic Times. According to the report, the proposed investment will come as issuance of shares through a preferential allotment.
- ❖ Canada's Brookfield Asset Management and Resurgent Power have bid for debt-ridden Jaiprakash Power Ventures Ltd, which its lenders have put on the block under the strategic debt restructuring mechanism.
- ❖ IDFC Ltd and Shriram Group called off their planned merger following differences over valuation. IDFC management said that it will continue to look at buying or merging with other non-banking financial companies at the level of IDFC Bank.

Global Forex	Closing	Chg	% Chg
EUR-USD	1.1256	0.0002	0.02
GBP-USD	1.3203	(0.0005)	(0.04)
USD-JPY	113.09	(0.0900)	(0.08)

Bond Markets	Closing	Chg
10-yr bond	7.05	-0.40 bps
Interbank call	5.89	2.44 bps



Domestic News (Cont...)

❖ Reliance Comm has presented a fresh "zero write-off " plan to its lenders, under which banks could convert some of its debt and take a majority 51% stake in the telecom operator. The company could then raise funds by selling its towers and spectrum to potential buyers, including Reliance Jio Infocomm, and monetising real estate assets.

❖ Bharti Infratel Ltd aims to buy the stake it doesn't own in Indus Towers Ltd. Indus Towers is a joint venture between Vodafone India, Bharti Infratel and Idea Cellular.

❖ Bharti Telecom Ltd, the holding company of Bharti Airtel Ltd, will acquire as much as 4.62% in Airtel. The acquisition price would not be higher by more than 25%, the size of the transaction is likely to be between Rs7,700 crore and Rs9,623 crore.

❖ Indian Oil Corp has been given green nod for augmenting its Koyali-Sanganer pipeline (KSPL) capacity up to 6 million tonnes per annum (MTPA) from existing 4.6 MTPA at a cost of Rs 273.23 crore.

❖ India represents the biggest investment opportunity in the world right now and its economy will treble in size to \$7 trillion from \$2.5 trillion in the next decade, Reliance Industries Chairman Mukesh Ambani said.

❖ SBI signed an agreement with seven companies for funding solar power energy projects. The seven companies include Adani Group, JSW Energy, Hinduja Renewables, Tata Renewables Energy, Azure Power, Cleantech Solar and Hero Solar Energy.

❖ Zen Technologies got Rs 224 crore order from Indian government

❖ Titagarh Wagons in pact for JV with Italy's MERMEC for Railway Signalling System

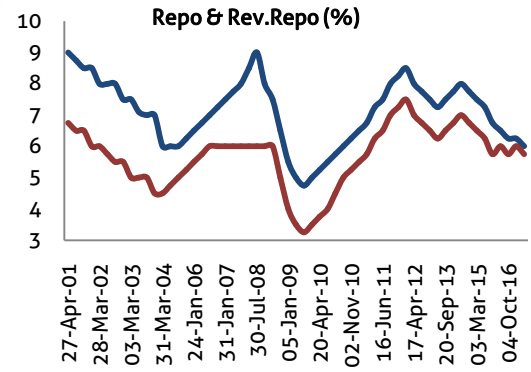
❖ Thomas Cook acquired 100 percent stake in TC Forex Services from Tata Capital Ltd.

❖ Cadila Health Gets US FDA Nod For Tamoxifen Citrate Tablets (Used To Treat, Prevent Breast Cancer)

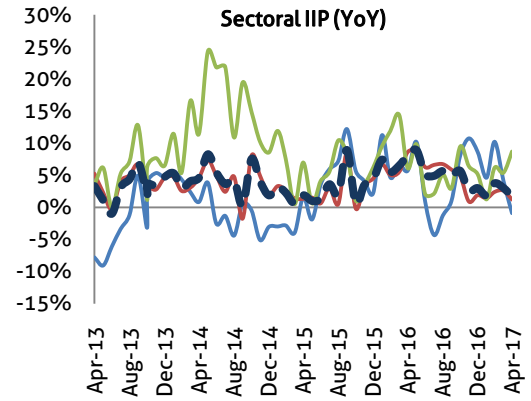
❖ Cipla Gets US FDA Nod For Zoledronic Acid (Used For The Treatment Of Certain Bone Diseases)

❖ Himadri Chemicals board meet on 2nd November to consider QIP

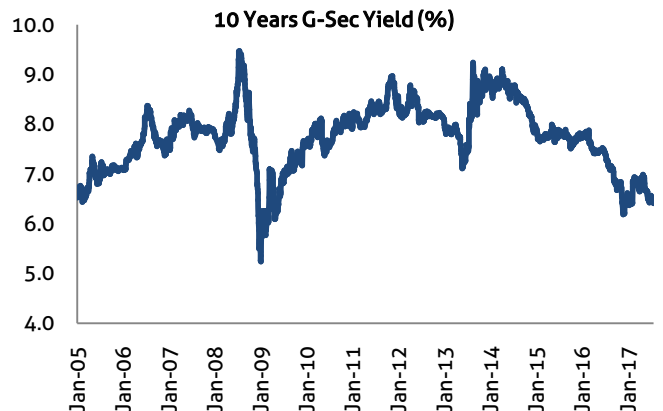
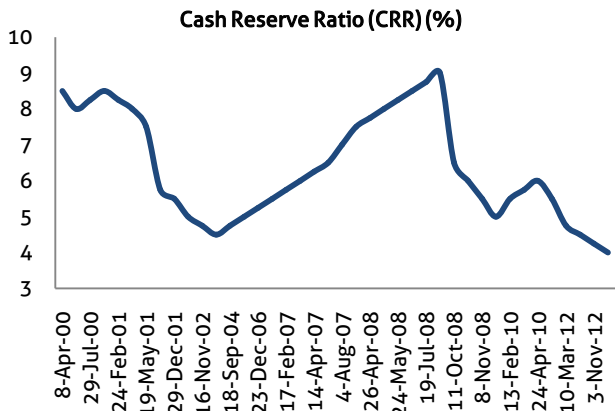
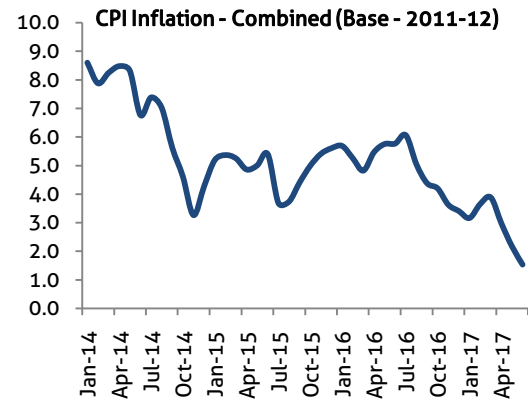
❖ The Supreme Court will consider granting bail to Unitech MD Sanjay Chandra after the embattled real estate firm deposits Rs 750 crore by December end.



— Repo Rate (%) — Reverse Repo Rate (%)



— Mining — Manufacturing
— Electricity — General



Bulk Deal - NSE

Date	Security Name	Client Name	Buy/Sell	Traded Qty.	Price
30-Oct-17	PI Industries Ltd	CARTICA CAPITAL LIMITED	SELL	3640862	775.0
30-Oct-17	Bharat Road Network Ltd	CORPORATION SAN FINANCE	BUY	800000	173.2
30-Oct-17	Prakash Industries Ltd.	BNP PARIBAS ARBITRAGE	SELL	974126	141.3
30-Oct-17	Cerebra Int Tech Ltd	POOJA ARVIND GOYAL	SELL	796711	42.9
30-Oct-17	Selan Exploration Technol	DILIPKUMAR BABUBHAI SOLANKI	SELL	138180	241.8

Bulk Deal - BSE

Date	Security Name	Client Name	Buy/Sell	Traded Qty.	Price
30-Oct-17	PIIND	CARTICA CAPITAL LTD	S	784,275	775.0
30-Oct-17	SORILHOLD	ANIL BANSILAL LODHA	S	500,000	91.0
30-Oct-17	GOPALA	MAHENDRAKUMAR SOMANI	S	255,000	102.0
30-Oct-17	RIBATEX	INDRA PRATAP SINGH (HUF)	S	128,150	118.1
30-Oct-17	SCPL	ASHISH SIKKA	B	156,800	88.0

Corporate Actions

Scrip Code	Scrip Name	Ex-Date	Purpose	Record Date
500820	ASIANPAINT	31-Oct-17	Interim Dividend - Rs. - 2.6500	01-Nov-17
500092	CRISIL	31-Oct-17	Interim Dividend - Rs. - 6.0000	01-Nov-17
500179	HCL-INSYS	31-Oct-17	Right Issue of Equity Shares	01-Nov-17
500209	INFY	31-Oct-17	Buy Back of Shares	01-Nov-17
500209	INFY	31-Oct-17	Interim Dividend - Rs. - 13.0000	01-Nov-17
539151	ARFIN	01-Nov-17	Bonus issue 2:1	02-Nov-17
532281	HCLTECH	01-Nov-17	Interim Dividend - Rs. - 2.0000	02-Nov-17
500696	HINDUNILVR	01-Nov-17	Interim Dividend - Rs. - 8.0000	02-Nov-17
500188	HINDZINC	01-Nov-17	Interim Dividend - Rs. - 2.0000	02-Nov-17
535789	IBULHSGFIN	01-Nov-17	Interim Dividend - Rs. - 9.0000	02-Nov-17
533154	INFINITE	01-Nov-17	Bonus issue 1:26	02-Nov-17
512453	SHRJAGP	01-Nov-17	Stock Split From Rs.10/- to Rs.1/-	02-Nov-17
539115	ALAN SCOTT	02-Nov-17	Reduction of Capital	03-Nov-17
540133	ICICIPRULI	02-Nov-17	Interim Dividend - Rs. - 2.3000	03-Nov-17
540133	ICICIPRULI	02-Nov-17	Special Dividend - Rs. - 1.1000	03-Nov-17
532819	MINDTREE	02-Nov-17	Interim Dividend - Rs. - 2.0000	03-Nov-17
532819	MINDTREE	02-Nov-17	Special Dividend - Rs. - 2.0000	03-Nov-17
539031	SETFBSE100	02-Nov-17	Dividend On Mutual Fund	03-Nov-17
500405	SUPPETRO	02-Nov-17	Interim Dividend - Rs. - 1.0000	03-Nov-17
500086	EXIDEIND	03-Nov-17	Interim Dividend - Rs. - 1.6000	06-Nov-17
532764	GEECEE	03-Nov-17	Interim Dividend - Rs. - 1.5000	06-Nov-17
500312	ONGC	03-Nov-17	Interim Dividend - Rs. - 3.0000	06-Nov-17

Global Economic Calendar

Date	Curr.	Event	Actual	Forecast	Previous
30-Oct-17	JPY	Retail Sales (YoY) (Sep)		2.50%	1.70%
30-Oct-17	GBP	BoE Consumer Credit (Sep)		1.500B	1.583B
30-Oct-17	GBP	Mortgage Lending (Sep)		3.60B	4.04B
30-Oct-17	EUR	Industrial Sentiment (Oct)		7	6.6
30-Oct-17	USD	Core PCE Price Index (MoM) (Sep)		0.20%	0.10%
30-Oct-17	USD	Personal Spending (MoM) (Sep)		0.70%	0.10%
31-Oct-17	JPY	Unemployment Rate (Sep)		2.80%	2.80%
31-Oct-17	JPY	Industrial Production (MoM) (Sep)		-1.50%	2.00%
31-Oct-17	GBP	GfK Consumer Confidence (Oct)		-10	-9
31-Oct-17	CNY	Manufacturing PMI (Oct)		52	52.4
31-Oct-17	JPY	BoJ Interest Rate Decision		-0.10%	-0.10%
31-Oct-17	JPY	Housing Starts (YoY) (Sep)		-3.60%	-2.00%
31-Oct-17	EUR	CPI (YoY) (Oct)		1.40%	1.50%
31-Oct-17	EUR	GDP (YoY) (Q3)		2.10%	2.10%
31-Oct-17	EUR	Unemployment Rate (Sep)		9.00%	9.10%
31-Oct-17	USD	S&P/CS HPI Composite - 20 n.s.a. (MoM) (Aug)		0.70%	0.70%
31-Oct-17	USD	CB Consumer Confidence (Oct)		120.3	119.8
01-Nov-17	GBP	Nationwide HPI (YoY) (Oct)			2.00%
01-Nov-17	USD	ADP Nonfarm Employment Change (Oct)		225K	135K
01-Nov-17	USD	Construction Spending (MoM) (Sep)		0.10%	0.50%
01-Nov-17	USD	ISM Manufacturing PMI (Oct)		59	60.8
01-Nov-17	USD	Fed Interest Rate Decision		1.25%	1.25%
02-Nov-17	USD	Domestic Truck Sales (Oct)		8.23M	9.69M
02-Nov-17	EUR	Manufacturing PMI (Oct)		58.6	58.6
02-Nov-17	GBP	BoE QE Total (Oct)		435B	435B
02-Nov-17	GBP	BoE Interest Rate Decision (Oct)		0.50%	0.25%
02-Nov-17	USD	Nonfarm Productivity (QoQ) (Q3)		2.00%	1.50%
03-Nov-17	USD	Manufacturing Payrolls (Oct)		15.0K	-1.0K
03-Nov-17	USD	Nonfarm Payrolls (Oct)		300K	-33K
03-Nov-17	USD	Trade Balance (Sep)		-43.40B	-42.40B
03-Nov-17	USD	Unemployment Rate (Oct)		4.20%	4.20%
03-Nov-17	USD	Factory Orders (MoM) (Sep)		1.00%	1.20%
03-Nov-17	USD	ISM Non-Manufacturing PMI (Oct)		59	59.8

Indian Economic Calendar

Date	Curr.	Event	Actual	Forecast	Previous
31-Oct-17	INR	Federal Fiscal Deficit (Sep)			5,250.45B
01-Nov-17	INR	Nikkei Markit Manufacturing PMI (Oct)		51.9	51.2
03-Nov-17	INR	Nikkei Services PMI (Oct)			50.7

Research Team

Name	Designation	Email ID	Contact No.
Paras Bothra	President Equity Research	paras@ashikagroup.com	+91 22 6611 1704
Krishna Kumar Agarwal	Equity Research Analyst	krishna.a@ashikagroup.com	+91 33 4036 0646
Partha Mazumder	Equity Research Analyst	partha.m@ashikagroup.com	+91 33 4036 0647
Arijit Malakar	Equity Research Analyst	amalakar@ashikagroup.com	+91 33 4036 0644
Kapil Jagasia	Equity Research Analyst	kapil.j@ashikagroup.com	+91 22 6611 1715
Tirthankar Das	Technical & Derivative Analyst	tirthankar.d@ashikagroup.com	+91 33 4036 0645

Ashika Stock Broking Limited ("ASBL") or Research Entity has started its journey in the year 1994 and is engaged in the business of broking services, depository services, distributor of financial products (Mutual fund, IPO & Bonds). This research report has been prepared and distributed by ASBL in the sole capacity of a Research Analyst (Reg No. INH000000206) of SEBI (Research Analyst) Regulations 2014. ASBL is a wholly owned subsidiary of Ashika Global Securities (P) Ltd., a RBI registered non-deposit taking NBFC Company. Ashika group (details is enumerated on our website www.ashikagroup.com) is an integrated financial service provider inter alia engaged in the business of Investment Banking, Corporate Lending, Commodity Broking, Debt Syndication & Other Advisory Services.

There were no significant and material disciplinary actions against ASBL taken by any regulatory authority during last three years.

Disclosure

ASBL or its associates, its Research Analysts (including their relatives) may have financial interest in the subject company(ies). However, the said financial interest is not limited to having an open stock market position in /acting as advisor to /having a loan transaction with the subject company(ies) apart from registration as clients.

- ASBL or its Research Analysts (including their relatives) do not have any actual / beneficial ownership of 1% or more of securities of the subject company(ies) at the end of the month immediately preceding the date of publication of this report or date of the public appearance. However ASBL's associates may have actual / beneficial ownership of 1% or more of securities of the subject company(ies).
- ASBL or their Research Analysts (including their relatives) do not have any other material conflict of interest at the time of publication of this research report or date of the public appearance. However ASBL's associates might have an actual / potential conflict of interest (other than ownership).
- ASBL or its associates may have received compensation for investment banking, merchant banking, and brokerage services and for other products and services from the subject companies during the preceding 12 months. However, ASBL or its associates or its Research analysts (forming part of Research Desk) have not received any compensation or other benefits from the subject companies or third parties in connection with the research report. Moreover, Research Analysts have not received any compensation from the companies mentioned herein in the past twelve months.
- ASBL or their Research Analysts have not managed or co-managed public offering of securities for the subject company(ies) in the past twelve months. However ASBL's associates may have managed or co-managed public offering of securities for the subject company(ies) in the past twelve months.
- Research Analysts have not served as an officer, director or employee of the companies mentioned in the report.
- Neither ASBL nor its Research Analysts have been engaged in market making activity for the companies mentioned in the report.

Disclaimer

The research recommendation and information herein are solely for the personal information of the authorized recipient and does not construe to be an offer documents or any investment, legal or taxation advice or solicitation of any action based upon it. This report is not for public distribution or use by any person or entity, where such distribution, publication, availability or use would be contrary to law, regulation or subject to any registration or licensing requirement. We will not treat recipients as customer by virtue of their receiving this report. The report is based upon the information obtained from public sources that we consider reliable, but we do not guarantee its accuracy or completeness. ASBL shall not be in anyways responsible for any loss or damage that may arise to any such person from any inadvertent error in the information contained in this report. The recipients of this report should rely on their own investigations.