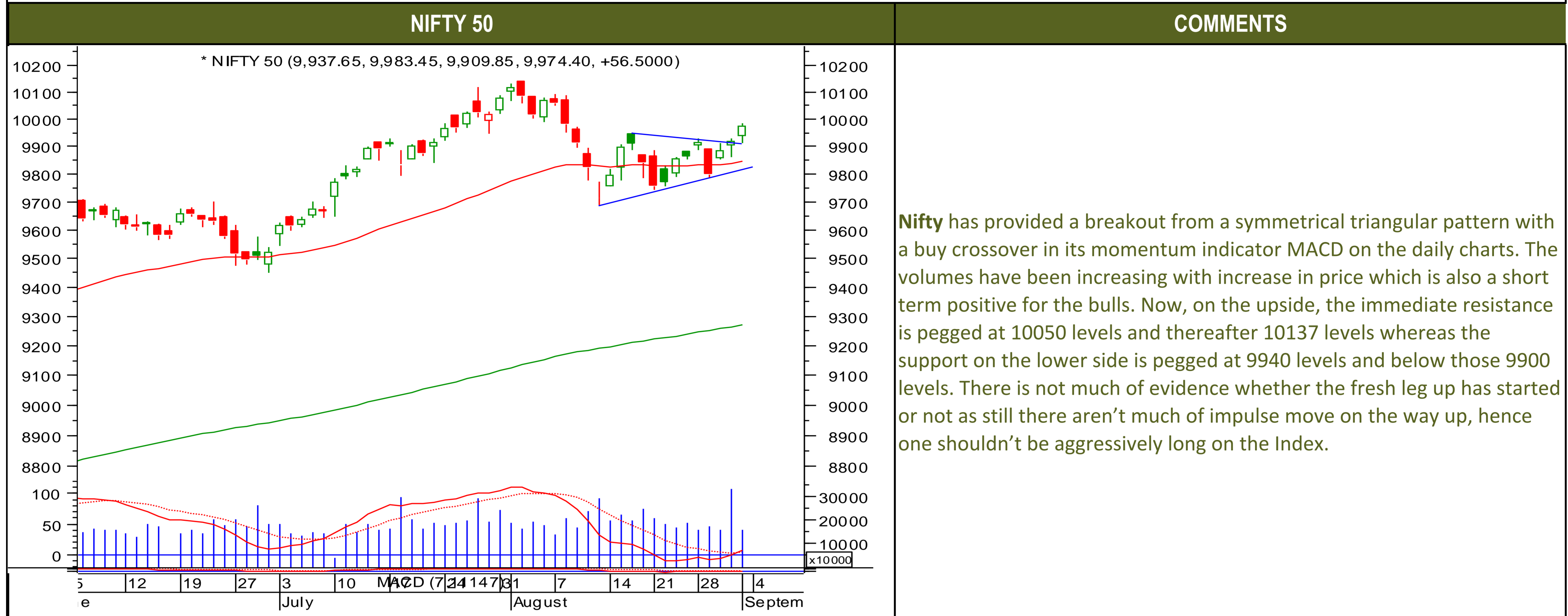




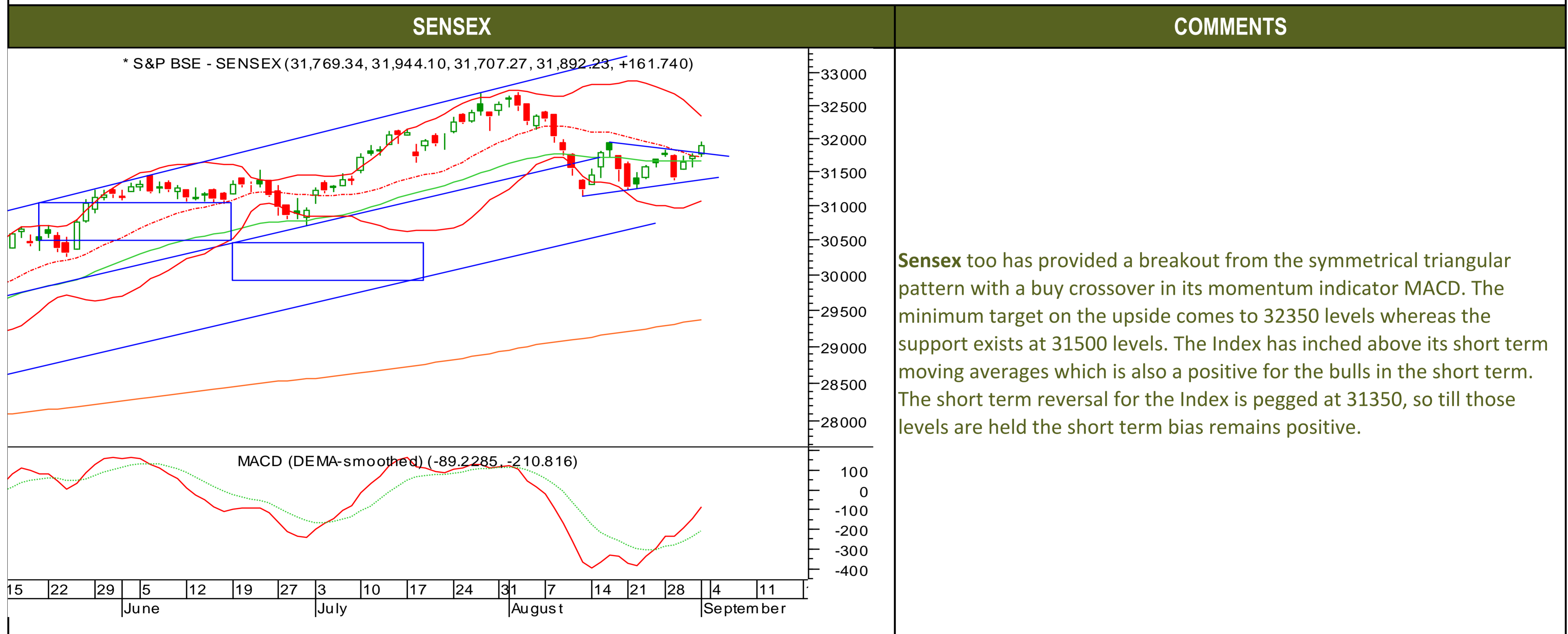
Monday, September 4, 2017

### TECHNICALS



Monday, September 4, 2017

### TECHNICALS





Monday, September 4, 2017

### TECHNICALS

BANK NIFTY	COMMENTS
<p>* NIFTY BANK (24,389.20, 24,494.35, 24,319.20, 24,434.00, +115.600)</p> <p>MACD (DEMA-smoothed) (-126.799, -200.735)</p> <p>29   5   12   19   27   3   10   17   24   31   7   14   21   28   4   11              June   July   August   September</p>	<p><b>The Nifty bank</b> too closed in the positive territory however the gains were quite nominal in comparison to the Nifty it underperformed in last trading session. Now, on the upside it has a resistance at 24500 and thereafter 24600 levels whereas it has a support at 24200 and below those 24100 levels. The momentum indicator MACD has provided a buy crossover which is quite for the bulls in the short term. So, additional longs should be created only above 24500 levels and the existing longs should have a strict stop loss of 24100 levels.</p>





Monday, September 4, 2017

### INDIAN INDICES

INDICES	CLOSE	CHANGE	% CHG
SENSEX	31892	161.74	0.51
NIFTY	9974	56.50	0.57

### TURNOVER & MARKET CAP

Rs. (Cr.)	YEST'DAY	PREV.DAY	% CHG
BSE Cash	3695	2479	49.08
NSE Cash	27330	34429	-20.62
Derivatives(bn)	11708	7305	60.27

### INSTITUTIONAL ACTIVITIES

DII Equity	291	1391	-79.10
FII Equity	-12	-1460	-99.15
FII F&O	2386	1120	113.09

### ADVANCES & DECLINES

EXCHANGE	ADV	DECLINES	TOTAL
BSE	1617	912	2529
NSE	1095	568	1663

### INDIAN ADR's

ADR	CLOSE	PREV.CLOSE	% CHG
Infosys	15.05	15.00	-0.33
HDFC Bank	96.16	97.43	1.32
Wipro	5.94	5.94	0.00
ICICI Bank	9.37	9.37	0.00
Sterlite Inds.	22.25	22.45	0.90
Dr. Reddy's Lab	31.54	32.19	2.06

### SECTORAL INDICES

BSE			NSE		
INDICES	CLOSE	%	INDICES	CLOSE	%
CNX Bank	24434	0.48	BSE MIDcap	15687	0.95
CNX IT	10514	-0.42	BSE SmallCap	16117	0.78
CNX Reality	288	2.59	BSE 200	4364	0.68
CNX FMCG	25907	0.28	<b>OTHER IMP. DATA</b>		
CNX Infra	3328	0.12	10 Yr Gsec yield	6.48	
CNX Pharma	9072	2.39	RS/\$	64.04	
BSE Auto	24148	1.94	\$ Index	92.66	
BSE Metal	13531	1.86	Brent Crude (\$)	52.35	
CNX MNC	13268	0.98	Gold (\$)	1318.34	
BSE 500	13858	0.69	Silver (\$)	17.51	
Nifty Midcap	4771	0.98	PE	CURRENT AVG	
BSE 100	10384	0.66	NIFTY	23.5	19.7

### TOP OUTPERFORMERS

SENSEX			NIFTY	
SYMBOL	CLOSE	%	SYMBOL	CLOSE
Jindal Steel	142.6	3.94	DR REDDYS	2217.6
Bajaj Auto	2918.7	3.92	IDFC	57.9
DLF	192.0	3.76	AUROBINDO PHARMA	758.6
Tata Motors	390.7	3.76	ASIAN PAINT	1215.9
JP Asso.	24.6	2.93	TATA MOTORS	390.9

### TOP UNDERPERFORMERS

SENSEX			NIFTY	
SYMBOL	CLOSE	%	SYMBOL	CLOSE
TCS	2463.2	-1.34	IDEA	88.7
Bharti Airtel	422.5	-1.26	POWERGRID	216.5
HDFC	1759.2	-0.92	BHARTI	422.6
Wipro	296.8	-0.75	TECH MAHINDRA	423.4
Cipla/India	568.6	-0.54	HDFC	1759.6

### BSE 500

TOP OUTPERFORMERS			TOP UNDERPERFORMERS	
SYMBOL	CLOSE	%	SYMBOL	CLOSE
Himachal Futuristic Communication	20.3	13.41	Religare Enterprises Ltd	44.9
Dynamatic Technologies Ltd	2657.1	11.46	Kansai Nerolac Paints Ltd	489.2
Sun TV Network Ltd	768.0	10.15	Kwality Ltd	142.8
NIIT Ltd	103.5	9.07	Shipping Corp of India Ltd	97.1
Central Bank of India	95.4	8.04	SML ISUZU Ltd	943.6
Bombay Dyeing & Manufacturing Co	122.5	6.66	Srei Infrastructure Finance Ltd	124.8
Reliance Capital Ltd	857.6	6.66	Trident Ltd/India	96.7
Hindustan Construction Co Ltd	37.0	6.47	Dilip Buildcon Ltd	591.0
HT Media Ltd	99.5	6.42	Idea Cellular Ltd	88.9
IDFC Ltd	58.0	6.33	Omaxe Ltd	198.7
JM Financial Ltd	142.3	6.08	Gujarat State Petronet Ltd	187.1
SH Kelkar & Co Ltd	251.4	5.74	Essel Propack Ltd	265.7
Advanced Enzyme Technologies Lt	303.8	5.69	Entertainment Network India Ltd	821.2
Indiabulls Real Estate Ltd	246.6	5.54	Adani Power Ltd	32.6
Ashok Leyland Ltd	112.9	5.42	Grasim Industries Ltd	1169.6
Balkrishna Industries Ltd	1652.2	5.31	Polaris Consulting & Services Ltd/India	237.9
Sterlite Technologies Ltd	231.9	5.27	Welspun Corp Ltd	137.6
Intellect Design Arena Ltd	113.3	5.25	Bajaj Electricals Ltd	342.5
BEML Ltd	1847.9	4.85	Hatsun Agro Products Ltd	628.0
South Indian Bank Ltd/The	29.2	4.66	RBL Bank Ltd	536.2
Elgi Equipments Ltd	236.4	4.63	Prestige Estates Projects Ltd	270.0
NMDC Ltd	132.4	4.62	Carborundum Universal Ltd	348.9
Aurobindo Pharma Ltd	758.1	4.52	Sobha Ltd	388.0
VIP Industries Ltd	236.5	4.49	Kalpataru Power Transmission Ltd	363.0
IDFC Bank Ltd	57.4	4.27	Navneet Education Ltd	164.6





### TRENDER+ OF NIFTY 50 STOCKS

SCRIP NAME	CLOSE	R 1	R 2	S 1	S 2	TRENDER+	PIVOT TABLE			
								NIFTY	SENSEX	BANK NIFTY
ACC Ltd	1818	1831	1845	1799	1781	UP				
Adani Ports & Special Econom	395	397	399	392	390	UP				
Ambuja Cements Ltd	283	285	287	280	278	UP				
Asian Paints Ltd	1216	1235	1253	1182	1147	UP	HIGH	9983	31944	24494
Aurobindo Pharma Ltd	759	773	786	734	710	UP	LOW	9910	31707	24319
Axis Bank Ltd	508	512	517	501	494	UP	CLOSE	9974	31892	24434
Bajaj Auto Ltd	2916	2958	3000	2851	2786	UP	PIVOT	9956	31848	24416
Bank of Baroda	138	140	142	137	136	Down	R 1	10002	31988	24513
Bharat Petroleum Corp Ltd	537	543	549	528	519	UP	R 2	10030	32085	24591
Bharti Airtel Ltd	423	428	434	419	415	Down	S 1	9928	31752	24337
Bharti Infratel Ltd	380	383	386	376	372	Down	S 2	9882	31611	24241
Bosch Ltd	22168	22285	22403	22007	21846	Flat				
Cipla Ltd/India	568	575	583	563	558	Down				
Coal India Ltd	239	240	241	238	237	Down				
Dr Reddy's Laboratories Ltd	2218	2262	2307	2144	2071	UP				
Eicher Motors Ltd	31772	32062	32352	31391	31009	UP				
GAIL India Ltd	384	390	396	378	373	UP				
Grasim Industries Ltd	1171	1222	1273	1136	1102	UP				
HCL Technologies Ltd	866	882	899	852	839	Flat				
HDFC Bank Ltd	1768	1779	1790	1759	1750	UP				
Hero MotoCorp Ltd	4049	4096	4142	3999	3948	UP				
Hindalco Industries Ltd	244	246	249	240	235	UP				
Hindustan Unilever Ltd	1216	1223	1230	1208	1200	UP				
Housing Development Finance	1760	1773	1787	1749	1738	UP				
ICICI Bank Ltd	298	300	301	297	296	Down				
Indiabulls Housing Finance Ltd	1222	1231	1240	1212	1201	UP				
Indian Oil Corp Ltd	448	456	463	444	440	UP				
IndusInd Bank Ltd	1692	1707	1722	1666	1639	UP				
Infosys Ltd	920	927	935	911	903	Down				
ITC Ltd	284	285	287	281	279	UP				
Kotak Mahindra Bank Ltd	993	1003	1013	977	962	UP				
Larsen & Toubro Ltd	1139	1145	1151	1132	1126	Flat				
Lupin Ltd	996	1009	1023	982	968	UP				
Mahindra & Mahindra Ltd	1348	1354	1360	1339	1331	UP				
Maruti Suzuki India Ltd	7812	7855	7897	7750	7688	UP				
NTPC Ltd	168	169	170	167	166	Down				
Oil & Natural Gas Corp Ltd	160	161	162	158	156	Flat				
Power Grid Corp of India Ltd	217	218	220	215	214	Down				
Reliance Industries Ltd	1610	1618	1626	1601	1591	UP				
State Bank of India	278	280	282	276	274	UP				
Sun Pharmaceutical Industries	486	492	498	481	475	UP				
Tata Consultancy Services Ltd	2456	2491	2525	2429	2402	Down				
Tata Motors Ltd	225	227	229	221	217	Flat				
Tata Motors Ltd	391	396	402	382	373	Flat				
Tata Power Co Ltd/The	80	81	82	79	78	UP				
Tata Steel Ltd	651	656	661	643	634	UP				
Tech Mahindra Ltd	423	428	433	421	418	Down				
UltraTech Cement Ltd	4000	4023	4047	3982	3965	UP				
Wipro Ltd	296	298	299	295	294	UP				
Yes Bank Ltd	1776	1787	1797	1760	1743	UP				
Zee Entertainment Enterprises	524	527	531	520	516	UP				



## HOW TO TRADE USING THE TRENDER+

## CLOSING PRICES

Closing price is the price at which scrip closes on the date mentioned in the report. Traders may initiate their intraday trade on this level. The stock or index should sustain above or below the pivot else you should exit the trade.

## TREND

Trend is the level at which the tendency of stocks can be identified. For best results, you can use the 'trender' to trade. A 'weak' trend denoted by "DOWN" means that traders can trade with a negative bias. If the trend is 'strong', denoted by "UP", one can trade with a positive bias on the long side. Base price should be the pivot point price.

## IF THE TREND IS UP

Ideally, for a buy position, buy at the pivot point and use S1 as the stop loss for a target of levels around R2 and higher.

## IF THE TREND IS DOWN

Ideally, for a sell position, sell at the pivot point and use R1 as a stop loss and S2 or lower levels as a target level.

**TRENDER +** : This is a broad based technical trend of the stock prevalent, may or may not be necessarily for the day.

**DAILY PROJECTED RANGE** : Projected Daily high and low are indicative range for the day, if the price moves out of the range the trend in that side may accelerate and turn bullish or bearish.

THE TREND AND THE DAILY PROJECTED RANGE IS BASED ON CERTAIN SIMPLE CALCULATIONS WHICH IS PROVIDED BY BLOOMBERG, EXCLUSIVELY USED BY ANAND RATHI

**Disclaimer**-This report has been issued by Anand Rathi Share and Stock Brokers Limited (ARSSBL), which is regulated by SEBI. The information herein was obtained from various sources; we do not guarantee its accuracy or completeness. Neither the information nor any opinion expressed constitutes an offer, or an invitation to make an offer, to buy or sell any securities or any options, futures or other derivatives related to such securities ("related investments"). ARSSBL and its affiliates may trade for their own accounts as market maker / jobber and/or arbitrageur in any securities of this issuer(s) or in related investments, and may be on the opposite side of public orders. ARSSBL, its affiliates, directors, officers, and employees may have a long or short position in any securities of this issuer(s) or in related investments. ARSSBL or its affiliates may from time to time perform investment banking or other services for, or solicit investment banking or other business from, any entity mentioned in this report. This research report is prepared for private circulation. It does not have regard to the specific investment objectives, financial situation and the particular needs of any specific person who may receive this report. Investors should seek financial advice regarding the appropriateness of investing in any securities or investment strategies discussed or recommended in this report and should understand that statements regarding future prospects may not be realized. Investors should note that income from such securities, if any, may fluctuate and that each security's price or value may rise or fall. Past performance is not necessarily a guide to future performance. Foreign currency rates of exchange may adversely affect the value, price or income of any security or related investment mentioned in this report.

ANAND RATHI SHARE AND STOCK BROKERS LIMITED

4 th Floor , Silver Metropolis, Jaicoach Compound Opposite Bimbisar Nagar, Goregaon(East), Mumbai - 400063.

Tel No: +91 22 4001 3700 | Fax No: +91 22 4001 3770 | Website: www.rathi.com