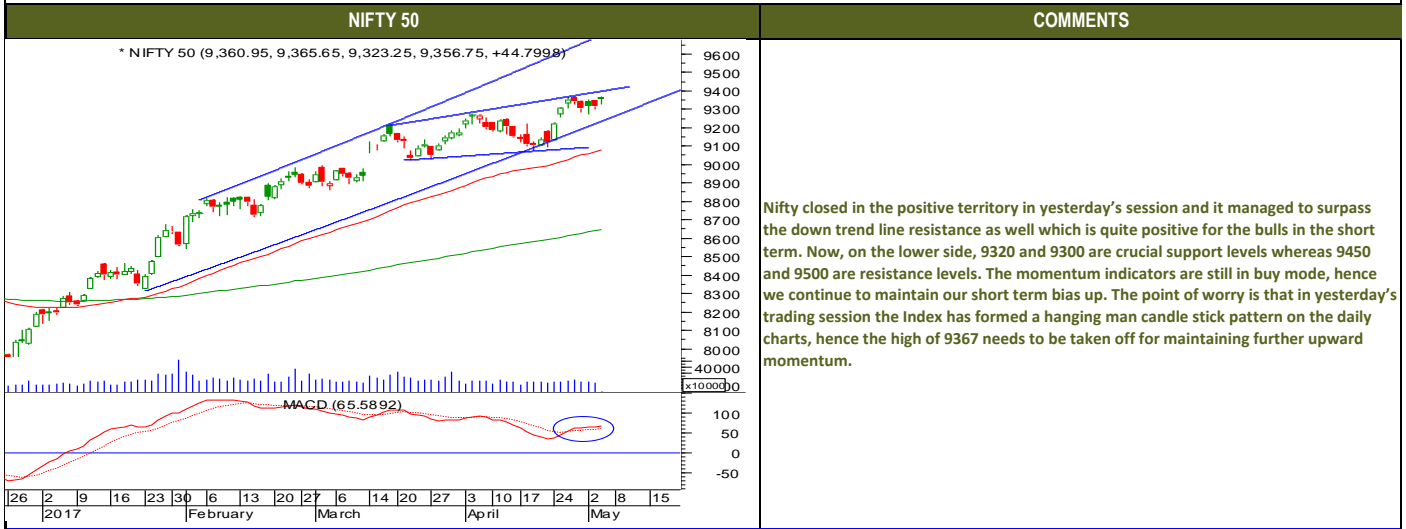




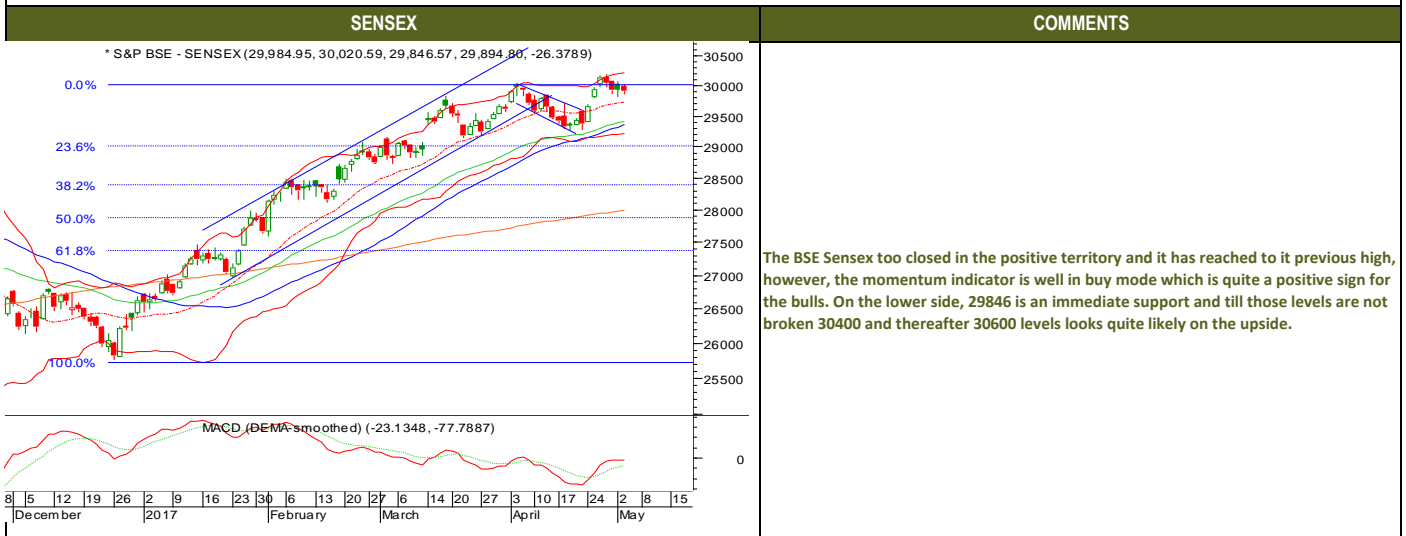
Friday, May 5, 2017

TECHNICALS



Friday, May 5, 2017

TECHNICALS





Friday, May 5, 2017

TECHNICALS

BANK NIFTY	COMMENTS
<p>* NIFTY BANK (22,445.85, 22,449.00, 22,240.05, 22,307.30, -34.0488)</p> <p>MACD (DEMA-smoothed) (89.2539, 31.5298)</p> <p>3 30 6 13 20 27 6 14 20 27 3 10 17 24 2 8 15 February March April May</p>	<p>The Nifty bank closed well in the positive territory in yesterday's trading session wherein it managed to close above its crucial hurdle of 22500 levels. So, now on the upside our target of 22800 and thereafter 23000 looks quite achievable. On the lower side, 22500 is an immediate support and below that 22200 levels. The momentum indicators here too are extremely bullish hence we continue to maintain our short term bias up for Banknifty for our above mentioned targets.</p>



Friday, May 5, 2017

INDIAN INDICES

INDICES	CLOSE	CHANGE	% CHG
SENSEX	30126	231.41	0.77
NIFTY	9360	47.95	0.51

TURNOVER & MARKET CAP

Rs. (Cr.)	YEST'DAY	PREV.DAY	% CHG
BSE Cash	4236	4063	4.27
NSE Cash	27623	25272	9.30
Derivatives(bn)	3671	3646	0.69

INSTITUTIONAL ACTIVITIES

DII Equity	112	541	-79.25
FII Equity	-518	-612	-15.38
FII F&O	857	48	1682.50

ADVANCES & DECLINES

EXCHANGE	ADV	DECLINES	TOTAL
BSE	1436	1485	2921
NSE	864	822	1686

INDIAN ADR's

ADR	CLOSE	PREV.CLOSE	% CHG
Infosys	14.52	14.68	1.10
HDFC Bank	81.39	81.40	0.01
Wipro	9.96	9.93	-0.30
ICICI Bank	8.48	8.85	4.36
Sterlite Inds.	23.25	23.40	0.65
Dr. Reddy's Lab	40.85	40.58	-0.66

SECTORAL INDICES

INDICES	BSE		NSE		
	CLOSE	%	INDICES	CLOSE	
CNX Bank	22720	1.85	BSE MIDcap	14881	0.48
CNX IT	10107	-0.24	BSE SmallCap	15486	0.36
CNX Realty	257	-0.87	BSE 200	4108	0.51
CNX FMCG	23952	1.13	OTHER IMP.DATA		
CNX Infra	3242	0.57	10 Yr Gsec yield	6.97	
CNX Pharma	9979	-0.03	RS\$	64.19	
BSE Auto	22769	-0.55	\$ Index	99.08	
BSE Metal	11117	-0.77	Brent Crude (\$)	50.39	
CNX MNC	11359	0.40	Gold (\$)	1235.24	
BSE 500	13062	0.49	Silver (\$)	16.52	
Nifty Midcap	4690	0.40	PE	CURRENT	AVG
BSE 100	9735	0.53	NIFTY	22.2	19.7

TOP OUTPERFORMERS

SENSEX			NIFTY		
SYMBOL	CLOSE	%	SYMBOL	CLOSE	%
ICICI Bank	298.0	9.24	ICICI Bank	297.8	9.18
SBI	298.8	3.27	GRASIM	1203.5	3.88
HUL	956.2	2.36	ADANI PORTS & SPECIAL ECONOMIC ZONE	339.5	3.66
ITC	281.1	1.41	AXIS BANK	518.9	3.59
Tata power	82.9	0.85	BANK OF BARODA	195.8	3.27

TOP UNDERPERFORMERS

SENSEX			NIFTY		
SYMBOL	CLOSE	%	SYMBOL	CLOSE	%
SESA Goa	232.5	-3.17	HINDALCO	192.5	-2.33
Hindalco	192.4	-2.31	INDUSIND	1420.3	-1.27
Tata Motors	436.5	-2.27	KOTAK BANK	905.5	-1.25
DLF	186.7	-1.97	Zee Entertainment Enterprises Ltd.	520.8	-1.22
ONGC	188.8	-1.15	ONGC	188.9	-1.15

BSE 500

TOP OUTPERFORMERS			TOP UNDERPERFORMERS		
SYMBOL	CLOSE	%	SYMBOL	CLOSE	%
Chambal Fertilizers and Chemicals	113.0	11.56	Intellect Design Arena Ltd	132.1	-5.03
ICICI Bank Ltd	298.0	9.24	Religare Enterprises Ltd	191.9	-4.79
Indian Overseas Bank	31.5	8.26	Hathway Cable & Datacom Ltd	42.1	-4.21
Coromandel International Ltd	398.3	7.30	Firstsource Solutions Ltd	41.8	-3.36
Motilal Oswal Financial Services Ltd	936.9	7.04	Cyient Ltd	526.8	-3.23
Union Bank of India	190.1	6.44	Vedanta Ltd	232.5	-3.19
Gujarat State Fertilizers & Chemicals	142.1	6.40	Ipsca Laboratories Ltd	545.9	-3.03
Exide Industries Ltd	236.4	6.29	Bombay Dyeing & Manufacturing Co Ltd	85.9	-2.99
EID Parry India Ltd	316.7	6.10	Granules India Ltd	140.6	-2.97
Punj Lloyd Ltd	23.1	5.98	Reliance Communications Ltd	32.1	-2.73
8K Miles Software Services Ltd	580.3	5.79	SpiceJet Ltd	112.5	-2.72
Canara Bank	389.1	5.78	RBL Bank Ltd	571.6	-2.53
Central Bank of India	110.0	5.37	Glenmark Pharmaceuticals Ltd	862.4	-2.52
Redington India Ltd	133.5	5.16	Bharat Forge Ltd	#####	-2.52
Mahindra CIE Automotive Ltd	252.8	5.01	MRF Ltd	#####	-2.51
Polaris Consulting & Services Ltd/It	212.0	4.82	Bombay Burmah Trading Co	900.0	-2.39
Andhra Bank	74.2	4.81	Kansai Nerolac Paints Ltd	395.7	-2.33
Suven Life Sciences Ltd	184.4	4.51	Godrej Properties Ltd	531.6	-2.32
JK Lakshmi Cement Ltd	490.3	4.46	Hindalco Industries Ltd	192.4	-2.31
Rashtriya Chemicals & Fertilizers Ltd	87.9	4.46	Tata Motors Ltd	436.5	-2.27
Aditya Birla Nuvo Ltd	1737.8	4.42	Texmaco Rail & Engineering Ltd	98.7	-2.23
Future Retail Ltd	350.3	4.29	Kitex Garments Ltd	405.7	-2.22
TTK Prestige Ltd	6561.7	4.28	Minda Industries Ltd	484.1	-2.18
Magma Fincorp Ltd	123.6	4.08	McLeod Russel India Ltd	186.4	-2.00
Crompton Greaves Consumer Elec	223.6	3.83	DLF Ltd	186.7	-1.97



TRENDER+ OF NIFTY 50 STOCKS

SCRIP NAME	CLOSE	R 1	R 2	S 1	S 2	TRENDER+	PIVOT TABLE				
ACC Ltd	1624	1636	1648	1608	1592	UP					
Adani Ports & Special Economic Zones Ltd	339	344	348	332	324	UP					
Ambuja Cements Ltd	244	246	248	241	238	Down					
Asian Paints Ltd	1133	1139	1146	1122	1111	UP	HIGH	9366	30170	22744	10170
Aurobindo Pharma Ltd	592	601	609	582	573	Down	LOW	9323	30007	22450	10055
Axis Bank Ltd	519	526	534	507	494	UP	CLOSE	9360	30126	22720	10107
Bajaj Auto Ltd	2943	2954	2965	2925	2908	UP	PIVOT	9350	30101	22638	10111
Bank of Baroda	196	198	199	193	190	UP	R 1	9376	30195	22826	10166
Bharat Petroleum Corp Ltd	732	742	752	721	710	Down	R 2	9392	30264	22932	10226
Bharti Airtel Ltd	346	350	355	343	339	Down	S 1	9334	30032	22532	10051
Bharti Infratel Ltd	363	366	369	360	357	UP	S 2	9307	29939	22344	9996
Bosch Ltd	23150	23363	23577	22993	22837	UP					
Cipla Ltd/India	550	556	561	546	543	Down					
Coal India Ltd	280	282	283	279	278	Flat					
Dr Reddy's Laboratories Ltd	2606	2621	2636	2590	2674	UP					
Eicher Motors Ltd	25764	26057	26350	25513	26262	Down					
GAIL India Ltd	429	432	436	424	419	UP					
Grasim Industries Ltd	1203	1221	1238	1174	1144	UP					
HCL Technologies Ltd	818	838	857	803	788	Down					
HDFC Bank Ltd	1535	1544	1554	1524	1513	UP					
Hero MotoCorp Ltd	3396	3414	3432	3367	3339	UP					
Hindalco Industries Ltd	192	197	202	189	185	UP					
Hindustan Unilever Ltd	957	967	976	940	924	UP					
Housing Development Finance Corp Ltd	1564	1583	1601	1551	1538	Down					
ICICI Bank Ltd	298	304	310	288	278	UP					
Indiabulls Housing Finance Ltd	1077	1114	1151	1055	1034	UP					
Indian Oil Corp Ltd	436	442	448	432	428	Down					
IndusInd Bank Ltd	1420	1441	1461	1405	1390	Down					
Infosys Ltd	938	942	946	931	925	Flat					
ITC Ltd	281	284	286	278	274	UP					
Kotak Mahindra Bank Ltd	905	915	926	898	890	Down					
Larsen & Toubro Ltd	1732	1742	1752	1722	1712	Down					
Lupin Ltd	1262	1278	1294	1252	1243	Down					
Mahindra & Mahindra Ltd	1335	1347	1360	1326	1317	UP					
Maruti Suzuki India Ltd	6640	6676	6712	6615	6590	UP					
NTPC Ltd	163	163	164	162	162	Down					
Oil & Natural Gas Corp Ltd	189	191	194	187	186	UP					
Power Grid Corp of India Ltd	211	213	215	209	207	UP					
Reliance Industries Ltd	1358	1374	1389	1348	1338	Down					
State Bank of India	299	302	304	295	290	UP					
Sun Pharmaceutical Industries Ltd	632	638	644	624	617	UP					
Tata Consultancy Services Ltd	2330	2350	2371	2309	2288	Flat					
Tata Motors Ltd	267	270	273	265	263	Down					
Tata Motors Ltd	437	445	453	432	427	Down					
Tata Power Co Ltd/The	83	84	84	82	81	Down					
Tata Steel Ltd	442	448	454	436	430	UP					
Tech Mahindra Ltd	419	422	426	416	413	Down					
UltraTech Cement Ltd	4324	4359	4393	4286	4248	UP					
Wipro Ltd	500	503	506	495	491	UP					
Yes Bank Ltd	1627	1638	1649	1618	1609	Down					
Zee Entertainment Enterprises Ltd	521	531	540	515	508	UP					



Friday, May 5, 2017

HOW TO TRADE USING THE TRENDER+

CLOSING PRICES

Closing price is the price at which scrip closes on the date mentioned in the report. Traders may initiate their intraday trade on this level. The stock or index should sustain above or below the pivot else you should exit the trade.

TREND

Trend is the level at which the tendency of stocks can be identified. For best results, you can use the 'trender' to trade. A 'weak' trend denoted by "DOWN" means that traders can trade with a negative bias. If the trend is 'strong', denoted by "UP", one can trade with a positive bias on the long side. Base price should be the pivot point price.

IF THE TREND IS UP

Ideally, for a buy position, buy at the pivot point and use S1 as the stop loss for a target of levels around R2 and higher.

IF THE TREND IS DOWN

Ideally, for a sell position, sell at the pivot point and use R1 as a stop loss and S2 or lower levels as a target level.

TRENDER + : This is a broad based technical trend of the stock prevalent, may or may not be necessarily for the day.

DAILY PROJECTED RANGE : Projected Daily high and low are indicative range for the day, if the price moves out of the range the trend in that side may accelerate and turn bullish or bearish.

THE TREND AND THE DAILY PROJECTED RANGE IS BASED ON CERTAIN SIMPLE CALCULATIONS WHICH IS PROVIDED BY BLOOMBERG, EXCLUSIVELY USED BY ANAND RATHI

Disclaimer- This report has been issued by Anand Rathi Share and Stock Brokers Limited (ARSSBL), which is regulated by SEBI. The information herein was obtained from various sources; we do not guarantee its accuracy or completeness. Neither the information nor any opinion expressed constitutes an offer, or an invitation to make an offer, to buy or sell any securities or any options, futures or other derivatives related to such securities ("related investments"). ARSSBL and its affiliates may trade for their own accounts as market maker / jobber and/or arbitrageur in any securities of this issuer(s) or in related investments, and may be on the opposite side of public orders. ARSSBL, its affiliates, directors, officers, and employees may have a long or short position in any securities of this issuer(s) or in related investments. ARSSBL or its affiliates may from time to time perform investment banking or other services for, or solicit investment banking or other business from, any entity mentioned in this report. This research report is prepared for private circulation. It does not have regard to the specific investment objectives, financial situation and the particular needs of any specific person who may receive this report. Investors should seek financial advice regarding the appropriateness of investing in any securities or investment strategies discussed or recommended in this report and should understand that statements regarding future prospects may not be realized. Investors should note that income from such securities, if any, may fluctuate and that each security's price or value may rise or fall. Past performance is not necessarily a guide to future performance. Foreign currency rates of exchange may adversely affect the value, price or income of any security or related investment mentioned in this report.

ANAND RATHI SHARE AND STOCK BROKERS LIMITED

4 th Floor , Silver Metropolis, Jaicoach Compound Opposite Bimbisar Nagar, Goregaon(East), Mumbai - 400063.

Tel No: +91 22 4001 3700 | Fax No: +91 22 4001 3770 | Website: www.rathi.com