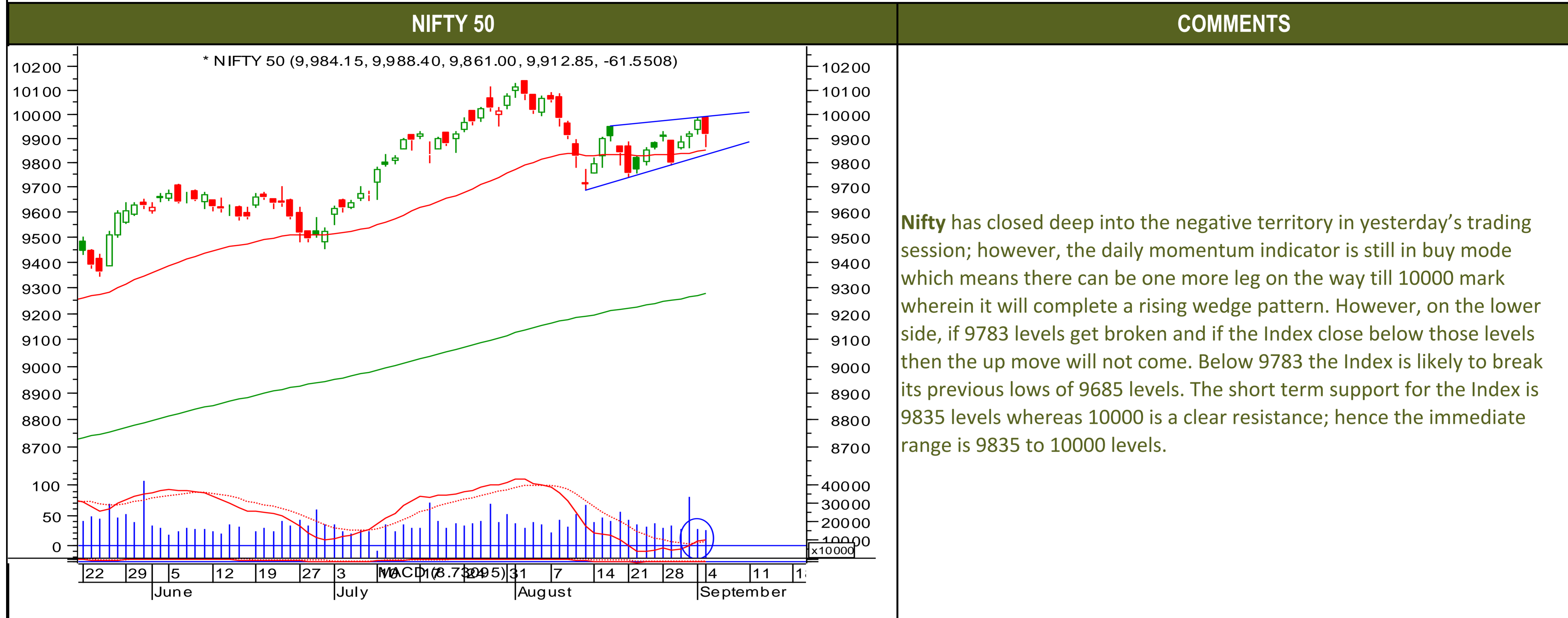




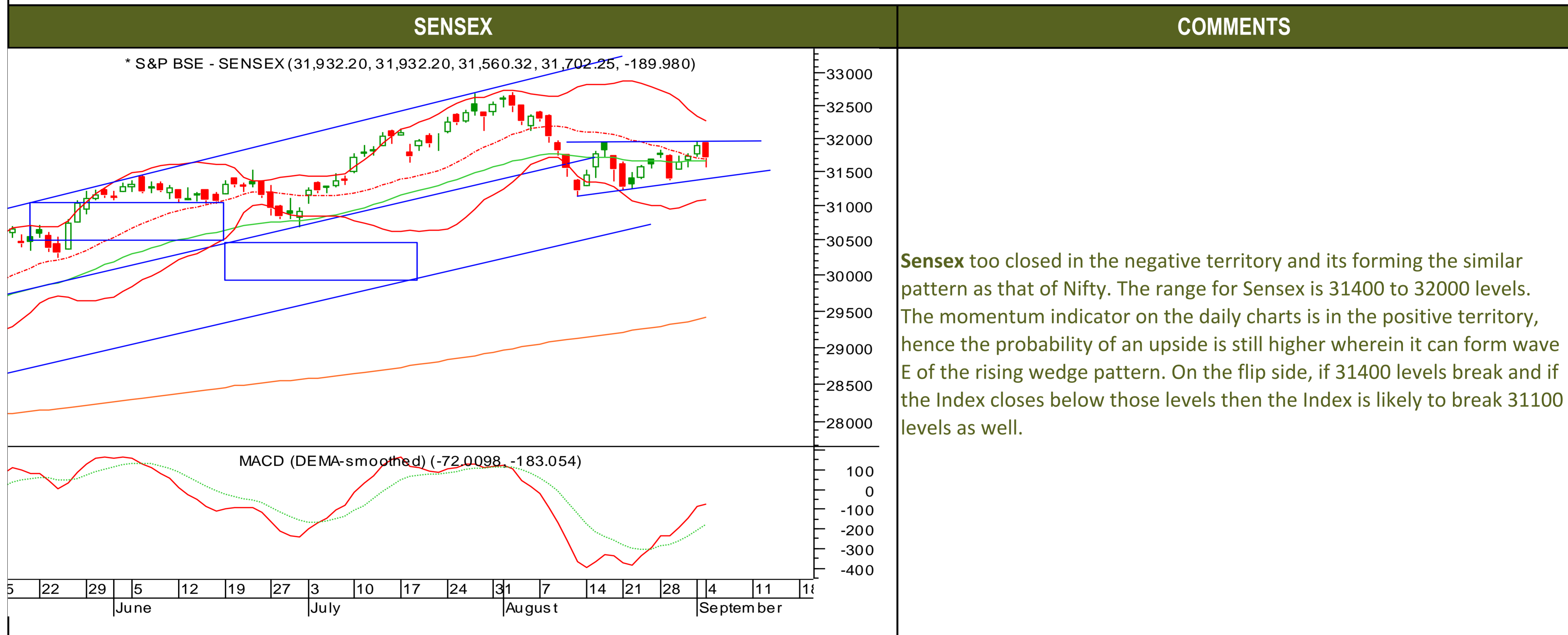
Tuesday, September 5, 2017

### TECHNICALS



Tuesday, September 5, 2017

### TECHNICALS





### TECHNICALS

BANK NIFTY	COMMENTS
<p>* NIFTY BANK (24,456.30, 24,459.35, 24,156.40, 24,236.85, -197.150)</p> <p>MACD (DEMA-smoothed) (-125.896, -185.767)</p> <p>29   5   12   19   27   3   10   17   24   31   7   14   21   28   4   11   18          June   July   August   September</p>	<p><b>The Nifty bank</b> too closed deep into the negative territory however the momentum indicator is well into the buy mode, so the overall set up still looks very sideways. The immediate support on the lower side is pegged at 24100 and below that 23900 levels. On the upside, the immediate resistance is pegged at 24300 and thereafter 24450 levels. The Nifty bank clearly indicates that the medium term trend is negative and the bears have an upper hand. The broader range for the Index is 23800-24500 levels which is a 700 points range.</p>



Tuesday, September 5, 2017

### INDIAN INDICES

INDICES	CLOSE	CHANGE	% CHG
SENSEX	31702	-189.98	-0.60
NIFTY	9913	-61.55	-0.62

### TURNOVER & MARKET CAP

Rs. (Cr.)	YEST'DAY	PREV.DAY	% CHG
BSE Cash	3322	3695	-10.09
NSE Cash	24821	27336	-9.20
Derivatives(bn)	3264	11708	-72.12

### INSTITUTIONAL ACTIVITIES

DII Equity	732	291	151.64
FII Equity	-833	-12	6583.87
FII F&O	2319	2386	-2.80

### ADVANCES & DECLINES

EXCHANGE	ADV	DECLINES	TOTAL
BSE	993	1650	2643
NSE	591	1115	1706

### INDIAN ADR's

ADR	CLOSE	PREV.CLOSE	% CHG
Infosys	15.00	14.84	-1.07
HDFC Bank	97.43	97.42	-0.01
Wipro	5.94	5.92	-0.34
ICICI Bank	9.37	9.40	0.32
Sterlite Inds.	22.45	22.55	0.45
Dr. Reddy's Lab	32.19	34.67	7.70

### SECTORAL INDICES

BSE			NSE		
INDICES	CLOSE	%	INDICES	CLOSE	%
CNX Bank	24237	-0.81	BSE MIDcap	15580	-0.68
CNX IT	10442	-0.69	BSE SmallCap	16021	-0.68
CNX Reality	283	-1.65	BSE 200	4335	-0.67
CNX FMCG	25761	-0.56	<b>OTHER IMP.DATA</b>		
CNX Infra	3295	-0.98	<b>10 Yr Gsec yield</b>	6.50	
CNX Pharma	9070	-0.01	<b>RS/\$</b>	64.08	
BSE Auto	23960	-0.78	<b>\$ Index</b>	92.54	
BSE Metal	13567	0.26	<b>Brent Crude (\$)</b>	52.46	
CNX MNC	13227	-0.31	<b>Gold (\$)</b>	1334.35	
BSE 500	13766	-0.66	<b>Silver (\$)</b>	17.85	
Nifty Midcap	4730	-0.31	<b>PE</b>	<b>CURRENT AVG</b>	
BSE 100	10311	-0.70	NIFTY	23.3	19.7

### TOP OUTPERFORMERS

SENSEX			NIFTY	
SYMBOL	CLOSE	%	SYMBOL	CLOSE
Coal India	246.4	3.38	COAL INDIA	246.5
Sun Pharma	500.6	2.79	SUNPHARMA	500.7
ONGC	161.6	1.06	ONGC	161.8
BHEL	131.0	1.06	BHEL	131.2
SESA Goa	315.8	0.25	IDFC	58.4

### TOP UNDERPERFORMERS

SENSEX			NIFTY	
SYMBOL	CLOSE	%	SYMBOL	CLOSE
JP Asso.	23.9	-3.05	ACC	1771.1
DLF	188.1	-2.06	TATA POWER	78.5
Infosys	901.3	-2.04	AMBUJA	276.8
Jindal Steel	139.7	-2.00	IDEA	86.9
Hero Motocorp	3973.6	-1.82	BHARTI	414.5

### BSE 500

TOP OUTPERFORMERS			TOP UNDERPERFORMERS	
SYMBOL	CLOSE	%	SYMBOL	CLOSE
JBF Industries Ltd	177.5	9.98	Kwality Ltd	114.3
Bombay Dyeing & Manufacturing Co	134.7	9.96	Adani Power Ltd	30.9
TV18 Broadcast Ltd	41.4	7.81	Just Dial Ltd	380.7
Raymond Ltd	857.9	5.71	Indian Oil Corp Ltd	429.5
Shriram Transport Finance Co Ltd	1073.5	5.30	Adani Enterprises Ltd	130.9
Sun TV Network Ltd	806.9	5.07	Dynamatic Technologies Ltd	2548.6
Oil India Ltd	308.4	4.51	Delta Corp Ltd	189.3
Monsanto India Ltd	2612.3	4.48	Srei Infrastructure Finance Ltd	120.1
Majesco Ltd	446.6	4.16	OnMobile Global Ltd	56.9
Tata Elxsi Ltd	1727.2	4.12	Religare Enterprises Ltd	43.4
JM Financial Ltd	148.1	4.08	BF Utilities Ltd	362.9
Kitex Garments Ltd	247.8	4.01	Indiabulls Real Estate Ltd	238.2
Future Retail Ltd	569.8	3.81	Adani Transmission Ltd	123.2
Arvind Ltd	387.7	3.76	Gujarat State Fertilizers & Chemicals Ltd	139.7
Entertainment Network India Ltd	850.8	3.60	Jai Corp Ltd	84.4
Coal India Ltd	246.4	3.38	Mangalore Refinery & Petrochemicals Ltd	135.3
Chambal Fertilizers and Chemicals	149.6	3.28	Hindustan Construction Co Ltd	35.8
Eros International Media Ltd	205.9	3.16	Intellect Design Arena Ltd	109.6
Force Motors Ltd	3966.6	3.06	Sequent Scientific Ltd	113.4
Oracle Financial Services Software	3569.9	2.97	Elgi Equipments Ltd	228.9
Torrent Power Ltd	217.1	2.89	Asahi India Glass Ltd	372.8
Sun Pharmaceutical Industries Ltd	500.6	2.79	Aarti Industries	853.9
Blue Dart Express Ltd	4349.3	2.79	Jaiprakash Associates Ltd	23.9
DB Corp Ltd	375.7	2.58	Ujivan Financial Services Ltd	351.6
Network 18 Media & Investments Lt	51.1	2.51	LA Opala RG Ltd	476.0



### TRENDER+ OF NIFTY 50 STOCKS

SCRIP NAME	CLOSE	R 1	R 2	S 1	S 2	TRENDER+	PIVOT TABLE					
ACC Ltd	1771	1808	1845	1750	1728	UP						
Adani Ports & Special Economi	385	394	403	378	371	Down						
Ambuja Cements Ltd	277	282	287	273	270	Down						
Asian Paints Ltd	1197	1211	1226	1187	1178	UP	HIGH	NIFTY	SENSEX	BANK NIFTY	CNX IT	
Aurobindo Pharma Ltd	749	767	785	736	724	UP	LOW	9861	31560	24459		10540
Axis Bank Ltd	502	507	513	498	494	UP	CLOSE	9913	31702	24237		10388
Bajaj Auto Ltd	2915	2936	2957	2892	2869	UP	PIVOT	9921	31732	24284		10442
Bank of Baroda	137	139	141	135	134	Down	R 1	9981	31903	24412		10525
Bharat Petroleum Corp Ltd	531	542	554	524	516	UP	R 2	10048	32103	24587		10609
Bharti Airtel Ltd	414	422	429	410	406	Down	S 1	9853	31531	24109		10373
Bharti Infratel Ltd	378	380	383	375	373	Down	S 2	9793	31360	23981		10305
Bosch Ltd	22469	22631	22793	22206	21943	Flat						
Cipla Ltd/India	562	573	585	554	546	Down						
Coal India Ltd	247	249	252	241	236	UP						
Dr Reddy's Laboratories Ltd	2195	2230	2265	2167	2138	UP						
Eicher Motors Ltd	31754	31984	32214	31486	31218	UP						
GAIL India Ltd	380	385	390	377	374	UP						
Grasim Industries Ltd	1170	1184	1198	1157	1143	UP						
HCL Technologies Ltd	861	871	881	854	847	Flat						
HDFC Bank Ltd	1751	1762	1773	1743	1735	UP						
Hero MotoCorp Ltd	3979	4055	4131	3932	3886	Down						
Hindalco Industries Ltd	242	247	252	238	233	UP						
Hindustan Unilever Ltd	1197	1210	1223	1189	1181	Down						
Housing Development Finance	1755	1769	1782	1742	1729	Down						
ICICI Bank Ltd	297	300	303	294	292	Down						
Indiabulls Housing Finance Ltd	1235	1255	1275	1217	1199	UP						
Indian Oil Corp Ltd	429	440	451	423	417	Down						
IndusInd Bank Ltd	1669	1687	1704	1655	1641	UP						
Infosys Ltd	900	916	933	889	877	Down						
ITC Ltd	283	284	285	282	281	UP						
Kotak Mahindra Bank Ltd	978	993	1009	968	958	Flat						
Larsen & Toubro Ltd	1131	1139	1147	1122	1114	Down						
Lupin Ltd	998	1008	1018	986	975	UP						
Mahindra & Mahindra Ltd	1328	1343	1357	1319	1310	UP						
Maruti Suzuki India Ltd	7822	7879	7937	7760	7699	UP						
NTPC Ltd	168	169	170	167	166	Down						
Oil & Natural Gas Corp Ltd	162	163	164	160	158	UP						
Power Grid Corp of India Ltd	218	220	223	214	210	Flat						
Reliance Industries Ltd	1613	1634	1655	1594	1575	UP						
State Bank of India	278	279	281	276	275	UP						
Sun Pharmaceutical Industries	501	514	528	483	465	UP						
Tata Consultancy Services Ltd	2456	2465	2475	2442	2429	Down						
Tata Motors Ltd	220	225	230	217	213	Down						
Tata Motors Ltd	383	393	402	377	371	Flat						
Tata Power Co Ltd/The	78	80	81	78	77	Down						
Tata Steel Ltd	647	652	657	641	636	UP						
Tech Mahindra Ltd	416	426	437	408	400	Down						
UltraTech Cement Ltd	4000	4022	4043	3986	3972	UP						
Wipro Ltd	297	298	299	296	295	UP						
Yes Bank Ltd	1764	1783	1803	1741	1718	UP						
Zee Entertainment Enterprises	522	526	530	518	514	UP						



## HOW TO TRADE USING THE TRENDER+

## CLOSING PRICES

Closing price is the price at which scrip closes on the date mentioned in the report. Traders may initiate their intraday trade on this level. The stock or index should sustain above or below the pivot else you should exit the trade.

## TREND

Trend is the level at which the tendency of stocks can be identified. For best results, you can use the 'trender' to trade. A 'weak' trend denoted by "DOWN" means that traders can trade with a negative bias. If the trend is 'strong', denoted by "UP", one can trade with a positive bias on the long side. Base price should be the pivot point price.

## IF THE TREND IS UP

Ideally, for a buy position, buy at the pivot point and use S1 as the stop loss for a target of levels around R2 and higher.

## IF THE TREND IS DOWN

Ideally, for a sell position, sell at the pivot point and use R1 as a stop loss and S2 or lower levels as a target level.

**TRENDER +** : This is a broad based technical trend of the stock prevalent, may or may not be necessarily for the day.

**DAILY PROJECTED RANGE** : Projected Daily high and low are indicative range for the day, if the price moves out of the range the trend in that side may accelerate and turn bullish or bearish.

THE TREND AND THE DAILY PROJECTED RANGE IS BASED ON CERTAIN SIMPLE CALCULATIONS WHICH IS PROVIDED BY BLOOMBERG, EXCLUSIVELY USED BY ANAND RATHI

**Disclaimer**-This report has been issued by Anand Rathi Share and Stock Brokers Limited (ARSSBL), which is regulated by SEBI. The information herein was obtained from various sources; we do not guarantee its accuracy or completeness. Neither the information nor any opinion expressed constitutes an offer, or an invitation to make an offer, to buy or sell any securities or any options, futures or other derivatives related to such securities ("related investments"). ARSSBL and its affiliates may trade for their own accounts as market maker / jobber and/or arbitrageur in any securities of this issuer(s) or in related investments, and may be on the opposite side of public orders. ARSSBL, its affiliates, directors, officers, and employees may have a long or short position in any securities of this issuer(s) or in related investments. ARSSBL or its affiliates may from time to time perform investment banking or other services for, or solicit investment banking or other business from, any entity mentioned in this report. This research report is prepared for private circulation. It does not have regard to the specific investment objectives, financial situation and the particular needs of any specific person who may receive this report. Investors should seek financial advice regarding the appropriateness of investing in any securities or investment strategies discussed or recommended in this report and should understand that statements regarding future prospects may not be realized. Investors should note that income from such securities, if any, may fluctuate and that each security's price or value may rise or fall. Past performance is not necessarily a guide to future performance. Foreign currency rates of exchange may adversely affect the value, price or income of any security or related investment mentioned in this report.

ANAND RATHI SHARE AND STOCK BROKERS LIMITED

4 th Floor , Silver Metropolis, Jaicoach Compound Opposite Bimbisar Nagar, Goregaon(East), Mumbai - 400063.

Tel No: +91 22 4001 3700 | Fax No: +91 22 4001 3770 | Website: www.rathi.com