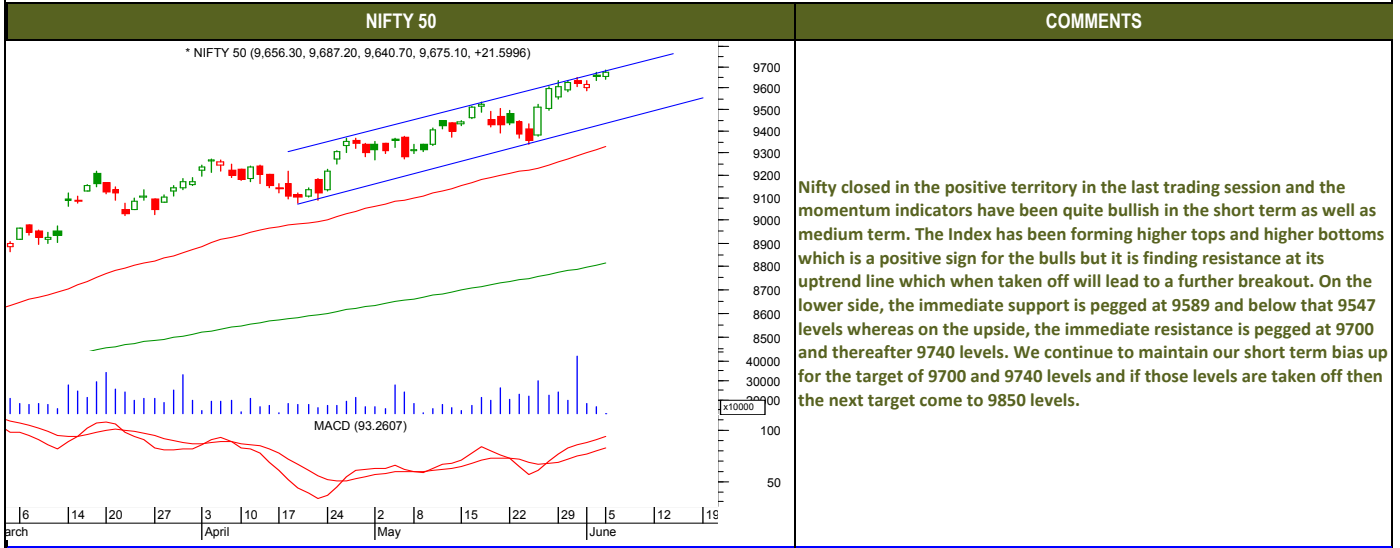




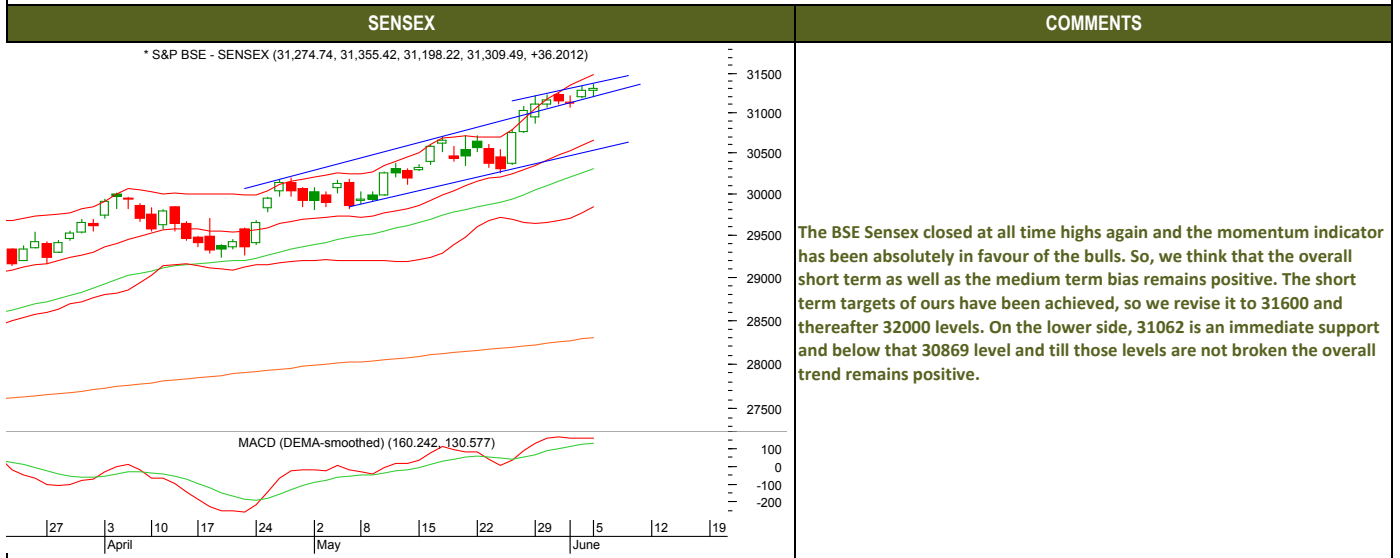
Tuesday, June 6, 2017

TECHNICALS



Tuesday, June 6, 2017

TECHNICALS





Tuesday, June 6, 2017

TECHNICALS

BANK NIFTY

* NIFTY BANK (23,397.40, 23,494.70, 23,349.95, 23,459.65, +83.7500)



COMMENTS

The Nifty bank too closed in the positive territory in the last trading session; however it has been trading in a sideways ascending triangular pattern in its wave IV of a minor degree. The range for this consolidation is 23200-232500 levels which when taken off the next target comes to 23600 initially and thereafter 23800 levels. The momentum indicators on the daily charts have been in buy mode both on the daily as well as weekly charts; hence we continue to maintain our short term as well as medium term bias up.



Tuesday, June 6, 2017

INDIAN INDICES

INDICES	CLOSE	CHANGE	% CHG
SENSEX	31309	3620	0.12
NIFTY	9675	21.60	0.22

TURNOVER & MARKET CAP

Rs. (Cr.)	YEST.DAY	PREV.DAY	% CHG
BSE Cash	3082	3386	-8.98
NSE Cash	20992	22302	-5.88
Derivatives(bn)	2469	8277	-70.17

INSTITUTIONAL ACTIVITIES

DII Equity	222	172	29.50
FII Equity	-59	-517	-88.57
FII F&O	531	57	826.40

ADVANCES & DECLINES

EXCHANGE	ADV	DECLINES	TOTAL
BSE	1451	1224	2675
NSE	935	745	1680

INDIAN ADR's

ADR	CLOSE	PREV.CLOSE	% CHG
Infosys	15.30	15.18	-0.78
HDFC Bank	87.79	87.61	-0.21
Wipro	10.92	10.81	-1.01
ICICI Bank	9.79	9.80	0.10
Sterlite Inds.	22.10	22.25	0.68
Dr. Reddy's Lab	39.46	39.63	0.43

SECTORAL INDICES

INDICES	BSE		NSE		
	CLOSE	%	CLOSE	%	
CNX Bank	23460	0.36	BSE MIDcap	14824	0.15
CNX IT	10660	0.48	BSE SmallCap	15410	0.65
CNX Realty	256	0.77	BSE 200	4203	0.29
CNX FMCG	26431	0.11	OTHER IMP. DATA		
CNX Infra	3272	0.54	10 Yr Gsec yield	6.64	
CNX Pharma	9230	-0.27	RS/\$	64.38	
BSE Auto	24346	0.22	\$ Index	96.90	
BSE Metal	11033	-0.56	Brent Crude (\$)	49.71	
CNX MNC	11972	0.54	Gold (\$)	1280.07	
BSE 500	13332	0.32	Silver (\$)	17.52	
Nifty Midcap	4583	0.54	PE	CURRENT AVG	
BSE 100	10000	0.28	NIFTY	23.0	19.7

TOP PERFORMERS

SENSEX			NIFTY	
SYMBOL	CLOSE	%	SYMBOL	CLOSE
JP Asso.	12.8	1.92	YES BANK	1523.6
Bajaj Auto	2900.7	1.92	IDEA	81.7
TCS	2601.1	1.53	BHARTI INFRATEL	382.5
L&T	1804.7	1.15	BAJAJ AUTO	2898.4
Cipla/India	633.9	0.99	TCS	2604.0

TOP UNDERPERFORMERS

SENSEX			NIFTY	
SYMBOL	CLOSE	%	SYMBOL	CLOSE
Coal India	264.3	-1.67	COAL INDIA	264.6
Infosys	960.2	-0.95	GAIL	398.0
ITC	317.5	-0.52	LUPIN	1156.2
Sun Pharma	512.4	-0.47	DR REDDYS	2535.9
BHEL	139.8	-0.39	IDFC	59.0

BSE 500

TOP OUTPERFORMERS			TOP UNDERPERFORMERS	
SYMBOL	CLOSE	%	SYMBOL	CLOSE
Titan Co Ltd	552.4	16.97	Videcon Industries Ltd	35.0
Gayatri Projects Ltd	168.6	13.61	Marksans Pharma Ltd	43.2
Tata Elxsi Ltd	1491.7	9.81	Sintex Industries Ltd	24.4
PC Jeweller Ltd	550.3	9.38	Mahindra & Mahindra Financial Services Ltd	373.4
Shoppers Stop Ltd	332.7	7.90	IFCI Ltd	24.8
Raymond Ltd	752.0	6.92	Bayer CropScience Ltd/India	4859.1
Uflex Ltd	390.3	6.35	Shipping Corp of India Ltd	75.1
United Spirits Ltd	2481.8	5.90	Eros International Media Ltd	218.9
Astra Microwave Products Ltd	140.9	5.62	Crompton Greaves Consumer Electricals Ltd	234.9
Entertainment Network India Ltd	858.2	5.30	Balrampur Chini Mills Ltd	151.4
Future Retail Ltd	346.5	5.08	Great Eastern Shipping Co Ltd/The	404.5
Redington India Ltd	149.1	5.04	EIH Ltd	131.0
Aditya Birla Fashion and Retail Ltd	178.6	4.84	Schneider Electric Infrastructure Ltd	131.5
Westlife Development Ltd	226.4	4.55	JSW Steel Ltd	190.5
Relaxo Footwears Ltd	491.3	4.31	Himachal Futuristic Communications Ltd	13.0
Housing Development & Infrastructur	93.6	4.23	Vardhman Textiles Ltd	1271.6
Info Edge India Ltd	944.6	4.22	DEN Networks Ltd	84.3
IIFL Holdings Ltd	549.4	4.21	Petronet LNG Ltd	436.5
Hexaware Technologies Ltd	252.5	4.21	Bajaj Hindusthan Sugar Ltd	16.2
V-Guard Industries Ltd	188.9	4.13	Himatsingka Seide Ltd	325.2
Trident Ltd/India	84.4	4.13	GMR Infrastructure Ltd	16.7
Escorts Ltd	744.8	3.99	Dena Bank	33.5
Dewan Housing Finance Corp Ltd	430.5	3.95	Symphony Ltd	1308.0
Shree Cement Ltd	18597.3	3.42	Oberoi Realty Ltd	388.7
Indiabulls Housing Finance Ltd	1169.0	3.34	Tamil Nadu Newsprint & Papers Ltd	325.3



TRENDER+ OF NIFTY 50 STOCKS

SCRIP NAME	CLOSE	R 1	R 2	S 1	S 2	TRENDER+	PIVOT TABLE				
ACC Ltd	1646	1658	1671	1633	1619	UP					
Adani Ports & Special Economic	361	365	370	356	351	UP					
Ambuja Cements Ltd	240	242	243	239	238	Down					
Asian Paints Ltd	1162	1172	1183	1155	1149	UP	HIGH	NIFTY	SENSEX	BANK NIFTY	CNX IT
Aurobindo Pharma Ltd	593	601	608	588	583	UP	LOW	9687	31355	23495	10678
Axis Bank Ltd	514	518	522	508	503	UP	CLOSE	9641	31198	23350	10586
Bajaj Auto Ltd	2898	2936	2973	2855	2813	Flat	PIVOT	9675	31309	23460	10660
Bank of Baroda	179	180	181	178	177	Down	R 1	9668	31288	23435	10641
Bharat Petroleum Corp Ltd	729	736	744	722	716	Down	R 2	9695	31377	23520	10697
Bharti Airtel Ltd	372	376	380	370	367	UP	S 1	9714	31445	23680	10733
Bharti Infratel Ltd	382	386	390	377	372	UP	S 2	9648	31220	23375	10605
Bosch Ltd	23894	24011	24127	23757	23621	UP		9621	31131	23290	10549
Cipla Ltd/India	535	538	542	530	524	Flat					
Coal India Ltd	265	267	270	263	261	Down					
Dr Reddy's Laboratories Ltd	2536	2563	2589	2515	2493	Flat					
Eicher Motors Ltd	29326	29423	29521	29189	29053	UP					
GAIL India Ltd	398	403	408	395	392	UP					
Grasim Industries Ltd	1155	1168	1180	1145	1135	UP					
HCL Technologies Ltd	858	865	871	854	849	Down					
HDFC Bank Ltd	1636	1641	1647	1627	1619	UP					
Hero MotoCorp Ltd	3835	3870	3905	3811	3786	UP					
Hindalco Industries Ltd	197	199	202	195	193	UP					
Hindustan Unilever Ltd	1098	1103	1109	1090	1082	UP					
Housing Development Finance C	1606	1615	1624	1594	1582	UP					
ICICI Bank Ltd	320	322	323	318	316	Down					
Indiabulls Housing Finance Ltd	1170	1194	1219	1139	1108	UP					
Indian Oil Corp Ltd	422	425	428	418	413	Flat					
IndusInd Bank Ltd	1505	1515	1528	1499	1492	UP					
Infosys Ltd	959	968	978	953	948	Down					
ITC Ltd	317	319	321	314	311	UP					
Kotak Mahindra Bank Ltd	967	971	975	961	956	UP					
Larsen & Toubro Ltd	1805	1815	1825	1789	1773	UP					
Lupin Ltd	1156	1168	1180	1146	1136	Flat					
Mahindra & Mahindra Ltd	1424	1430	1437	1419	1414	UP					
Maruti Suzuki India Ltd	7126	7161	7197	7091	7055	Down					
NTPC Ltd	163	163	164	162	161	UP					
Oil & Natural Gas Corp Ltd	176	178	181	174	172	Down					
Power Grid Corp of India Ltd	205	207	209	204	202	Down					
Reliance Industries Ltd	1329	1342	1354	1316	1304	Down					
State Bank of India	287	289	291	286	285	UP					
Sun Pharmaceutical Industries L	513	519	526	509	505	UP					
Tata Consultancy Services Ltd	2604	2629	2654	2569	2535	UP					
Tata Motors Ltd	288	290	291	286	284	UP					
Tata Motors Ltd	478	482	485	475	472	Down					
Tata Power Co Ltd/The	81	82	82	81	80	Down					
Tata Steel Ltd	491	498	506	486	480	UP					
Tech Mahindra Ltd	403	406	410	398	394	Flat					
UltraTech Cement Ltd	4178	4238	4298	4142	4105	Down					
Wipro Ltd	566	560	565	549	542	UP					
Yes Bank Ltd	1524	1539	1555	1495	1466	UP					
Zee Entertainment Enterprises L	525	529	532	522	518	UP					



HOW TO TRADE USING THE TRENDER+

CLOSING PRICES

Closing price is the price at which scrip closes on the date mentioned in the report. Traders may initiate their intraday trade on this level. The stock or index should sustain above or below the pivot else you should exit the trade.

TREND

Trend is the level at which the tendency of stocks can be identified. For best results, you can use the 'trender' to trade. A 'weak' trend denoted by "DOWN" means that traders can trade with a negative bias. If the trend is 'strong', denoted by "UP", one can trade with a positive bias on the long side. Base price should be the pivot point price.

IF THE TREND IS UP

Ideally, for a buy position, buy at the pivot point and use S1 as the stop loss for a target of levels around R2 and higher.

IF THE TREND IS DOWN

Ideally, for a sell position, sell at the pivot point and use R1 as a stop loss and S2 or lower levels as a target level.

TRENDER + : This is a broad based technical trend of the stock prevalent, may or may not be necessarily for the day.

DAILY PROJECTED RANGE : Projected Daily high and low are indicative range for the day, if the price moves out of the range the trend in that side may accelerate and turn bullish or bearish.

THE TREND AND THE DAILY PROJECTED RANGE IS BASED ON CERTAIN SIMPLE CALCULATIONS WHICH IS PROVIDED BY BLOOMBERG, EXCLUSIVELY USED BY ANAND RATHI

Disclaimer-This report has been issued by Anand Rathi Share and Stock Brokers Limited (ARSSBL), which is regulated by SEBI. The information herein was obtained from various sources; we do not guarantee its accuracy or completeness. Neither the information nor any opinion expressed constitutes an offer, or an invitation to make an offer, to buy or sell any securities or any options, futures or other derivatives related to such securities ("related investments"). ARSSBL and its affiliates may trade for their own accounts as market maker / jobber and/or arbitrageur in any securities of this issuer(s) or in related investments, and may be on the opposite side of public orders. ARSSBL, its affiliates, directors, officers, and employees may have a long or short position in any securities of this issuer(s) or in related investments. ARSSBL, or its affiliates may from time to time perform investment banking or other services for, or solicit investment banking or other business from, any entity mentioned in this report. This research report is prepared for private circulation. It does not have regard to the specific investment objectives, financial situation and the particular needs of any specific person who may receive this report. Investors should seek financial advice regarding the appropriateness of investing in any securities or investment strategies discussed or recommended in this report and should understand that statements regarding future prospects may not be realized. Investors should note that income from such securities, if any, may fluctuate and that each security's price or value may rise or fall. Past performance is not necessarily a guide to future performance. Foreign currency rates of exchange may adversely affect the value, price or income of any security or related investment mentioned in this report.

ANAND RATHI SHARE AND STOCK BROKERS LIMITED

4 th Floor , Silver Metropolis, Jaicoach Compound Opposite Bimbisar Nagar, Goregaon(East), Mumbai - 400063.

Tel No: +91 22 4001 3700 | Fax No: +91 22 4001 3770 | Website: www.rathi.com