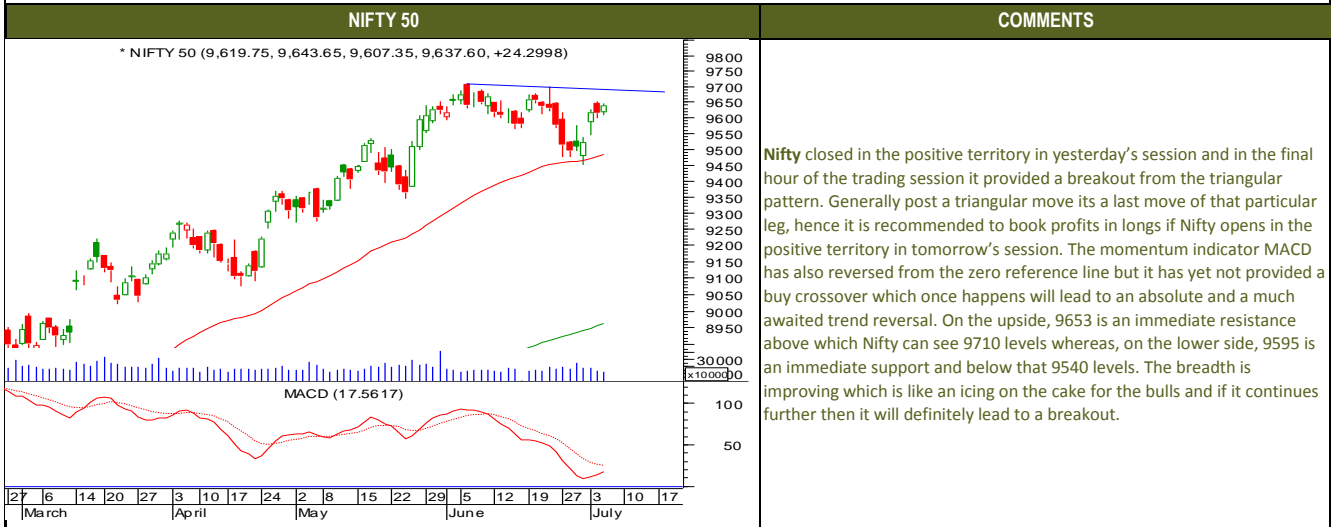




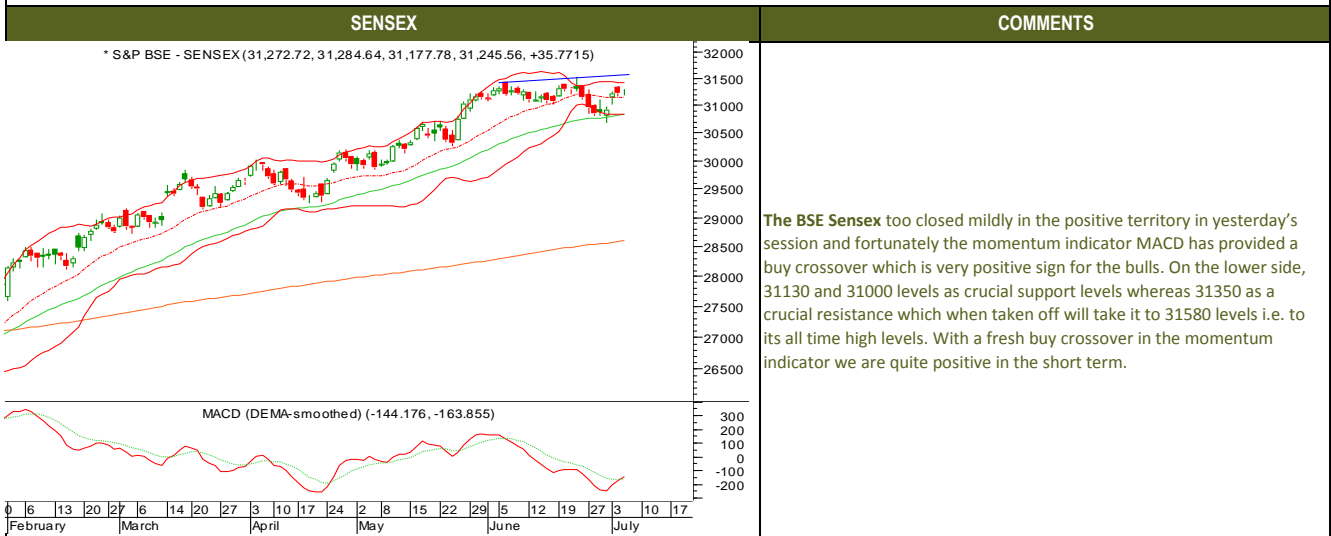
Thursday, July 6, 2017

TECHNICALS



Thursday, July 6, 2017

TECHNICALS





Thursday, July 6, 2017

TECHNICALS

BANK NIFTY	COMMENTS
<p>* NIFTY BANK (23,241.90, 23,380.35, 23,205.55, 23,352.60, +138.400)</p> <p>MACD (DEMA-smoothed) (-251.219, -207.949)</p> <p>20 27 6 14 20 27 3 10 17 24 2 8 15 22 29 5 12 19 27 3 10 17 March April May June July</p>	<p>The Nifty bank closed in the positive territory in yesterday session thus continuing to retrace the previous fall. It has already retraced 38.2% of its previous fall and it is likely to retrace 50% levels which come to 23456. At 23500 levels there exists lots of resistance technically and from the point of view of options wherein maximum OI stands at 23500 strike on the call options front. On the lower side, 23150 is an immediate support and below that 23950 levels. We had recommended a bull call ratio spread in yesterday's session which we booked in profit, now today being a weekly expiry day we think it will be a zigzag move within the range of 23500-23250 levels, so one can initiate their positions accordingly.</p>



Thursday, July 6, 2017

INDIAN INDICES

INDICES	CLOSE	CHANGE	% CHG
SENSEX	31246	35.77	0.11
NIFTY	9638	24.30	0.25

TURNOVER & MARKET CAP

Rs. (Cr.)	YEST'DAY	PREV.DAY	% CHG
BSE Cash	3840	3190	20.38
NSE Cash	22033	21918	0.53
Derivatives(bn)	4226	3818	10.67

INSTITUTIONAL ACTIVITIES

DII Equity	296	954	-69.00
FII Equity	-834	-805	3.69
FII F&O	709	1341	-47.13

ADVANCES & DECLINES

EXCHANGE	ADV	DECLINES	TOTAL
BSE	1706	1308	3014
NSE	1137	566	1703

INDIAN ADR's

ADR	CLOSE	PREV.CLOSE	% CHG
Infosys	15.02	15.14	0.80
HDFC Bank	86.97	87.92	1.09
Wipro	5.20	5.21	0.19
ICICI Bank	8.97	8.97	0.00
Sterlite Inds.	23.25	23.70	1.94
Dr. Reddy's Lab	42.14	41.48	-1.57

SECTORAL INDICES

INDICES	BSE		NSE		
	CLOSE	%	INDICES	CLOSE	
CNX Bank	23353	0.60	BSE MIDcap	14902	0.97
CNX IT	10161	-0.52	BSE SmallCap	15741	1.12
CNX Realty	270	1.54	BSE 200	4207	0.44
CNX FMCG	27349	-0.72	OTHER IMP.DATA		
CNX Infra	3226	0.36	10 Yr Gsec yield		
CNX Pharma	9589	0.75	RS\$	64.77	
BSE Auto	23772	0.71	\$ Index	96.49	
BSE Metal	11735	1.24	Brent Crude (\$)	49.03	
CNX MNC	12378	0.78	Gold (\$)	1219.86	
BSE 500	13368	0.48	Silver (\$)	15.95	
Nifty Midcap	4638	0.78	PE	CURRENT	
BSE 100	9988	0.36	NIFTY	23.3	
				19.7	

TOP OUTPERFORMERS

SENSEX			NIFTY	
SYMBOL	CLOSE	%	SYMBOL	CLOSE
JP Asso	21.0	7.97	IDFC	60.5
Jindal Steel	130.6	3.57	LUPIN	1084.0
SESA Goa	261.4	2.41	M&M	1385.0
M&M	1385.1	2.24	ONGC	162.8
ONGC	162.7	1.69	ULTRATECHCEM	4088.0

TOP UNDERPERFORMERS

SENSEX			NIFTY	
SYMBOL	CLOSE	%	SYMBOL	CLOSE
ITC	331.1	-1.79	ITC	331.1
Infosys	951.1	-0.98	BHARTI	376.3
Wipro	257.6	-0.90	HDFC	1629.1
Bharti Airtel	376.3	-0.79	GAIL	363.1
HDFC	1629.4	-0.67	HCL TECH	837.5

BSE 500

TOP OUTPERFORMERS			TOP UNDERPERFORMERS	
SYMBOL	CLOSE	%	SYMBOL	CLOSE
Timken India Ltd	779.0	15.25	Religare Enterprises Ltd	#####
IDFC Ltd	60.5	10.11	Relaxo Footwears Ltd	#####
IDFC Bank Ltd	62.3	9.97	Max Financial Services Ltd	#####
Sterite Technologies Ltd	158.5	8.16	KPR Mill Ltd	#####
Jaiprakash Associates Ltd	21.0	7.97	Tube Investments of India Ltd	#####
HSIL Ltd	404.2	7.47	Intellect Design Arena Ltd	#####
Avanti Feeds Ltd	1597.4	7.32	Dhanuka Agritech Ltd	#####
Chambal Fertilizers and Chemicals	136.9	7.17	Yamini Investment Ltd	#####
TV Today Network Ltd	250.8	7.00	Dynamatic Technologies Ltd	#####
Sonata Software Ltd	162.9	6.93	Tata Communications Ltd	#####
Raymond Ltd	814.9	6.43	Birla Corp Ltd	#####
Indiabulls Real Estate Ltd	209.3	6.32	Century Plyboards India Ltd	#####
Texmaco Rail & Engineering Ltd	93.4	6.08	Mphasis Ltd	#####
Bombay Dyeing & Manufacturing Co	88.2	5.82	ITC Ltd	#####
Radico Khaitan Ltd	134.6	5.78	Mahindra Lifespace Developers Ltd	#####
Jain Irrigation Systems Ltd	107.2	5.67	KEC International Ltd	#####
Equitas Holdings Ltd/India	158.7	5.34	TAKE Solutions Ltd	#####
Whirlpool of India Ltd	1184.2	5.19	SpiceJet Ltd	#####
Ujivan Financial Services Ltd	325.9	5.16	Wonderla Holidays Ltd	#####
Tata Coffee Ltd	140.6	5.08	Indoco Remedies Ltd	#####
PTC India Ltd	100.5	5.02	Aarti Industries	#####
AstraZeneca Pharma India Ltd	962.1	4.99	PVR Ltd	#####
Prism Cement Ltd	126.7	4.93	DEN Networks Ltd	#####
L&T Technology Services Ltd	761.7	4.73	Shipping Corp of India Ltd	#####
Shriram Transport Finance Co Ltd	1094.7	4.65	Oberoi Realty Ltd	#####



Thursday, July 6, 2017

TRENDER+ OF NIFTY 50 STOCKS

SCRIP NAME	CLOSE	R 1	R 2	S 1	S 2	TRENDER+	PIVOT TABLE				
ACC Ltd	1594	1605	1615	1578	1562	UP					
Adani Ports & Special Econom	373	374	376	372	370	UP					
Ambuja Cements Ltd	253	256	258	250	246	UP					
Asian Paints Ltd	1127	1138	1150	1112	1097	Flat	HIGH	9644	31285	23380	10196
Aurobindo Pharma Ltd	678	686	693	670	662	Down	LOW	9607	31178	23206	10137
Axis Bank Ltd	514	517	520	509	505	UP	CLOSE	9638	31246	23353	10161
Bajaj Auto Ltd	2771	2787	2802	2753	2735	Down	PIVOT	9630	31236	23313	10165
Bank of Baroda	161	163	164	159	157	Flat	R 1	9652	31294	23420	10192
Bharat Petroleum Corp Ltd	662	665	668	658	653	Flat	R 2	9666	31343	23488	10224
Bharti Airtel Ltd	376	379	381	374	371	Down	S 1	9615	31187	23245	10133
Bharti Infratel Ltd	403	407	410	399	394	UP	S 2	9583	31129	23138	10106
Bosch Ltd	23723	23880	24038	23521	23318	Flat					
Cipla Ltd/India	546	549	551	542	539	Down					
Coal India Ltd	248	249	250	246	245	Flat					
Dr Reddy's Laboratories Ltd	2665	2682	2699	2635	2604	UP					
Eicher Motors Ltd	28067	28211	28354	27837	27606	Flat					
GAIL India Ltd	363	367	371	360	358	UP					
Grasim Industries Ltd	1287	1302	1317	1264	1241	UP					
HCL Technologies Ltd	838	841	844	835	832	Down					
HDFC Bank Ltd	1649	1657	1666	1643	1637	UP					
Hero MotoCorp Ltd	3710	3719	3729	3698	3687	Down					
Hindalco Industries Ltd	199	200	201	197	196	UP					
Hindustan Unilever Ltd	1097	1102	1108	1087	1076	Flat					
Housing Development Finance	1629	1639	1649	1621	1613	Flat					
ICICI Bank Ltd	293	295	297	290	286	UP					
Indiabulls Housing Finance Ltd	1061	1070	1078	1048	1036	Down					
Indian Oil Corp Ltd	386	388	391	382	377	Flat					
IndusInd Bank Ltd	1516	1524	1533	1504	1491	UP					
Infosys Ltd	951	958	965	945	938	UP					
ITC Ltd	331	336	341	328	325	UP					
Kotak Mahindra Bank Ltd	960	964	968	955	950	Flat					
Larsen & Toubro Ltd	1695	1703	1710	1684	1673	Flat					
Lupin Ltd	1084	1108	1132	1048	1012	Flat					
Mahindra & Mahindra Ltd	1385	1400	1415	1366	1347	UP					
Maruti Suzuki India Ltd	7378	7404	7430	7342	7306	UP					
NTPC Ltd	159	160	161	158	157	UP					
Oil & Natural Gas Corp Ltd	163	164	166	161	159	Flat					
Power Grid Corp of India Ltd	210	211	212	209	208	Down					
Reliance Industries Ltd	1443	1452	1461	1429	1415	UP					
State Bank of India	275	276	278	273	271	UP					
Sun Pharmaceutical Industries	551	558	565	546	541	UP					
Tata Consultancy Services Ltd	2356	2366	2375	2346	2335	Down					
Tata Motors Ltd	265	267	270	263	261	Down					
Tata Motors Ltd	432	435	438	428	424	Flat					
Tata Power Co Ltd/The	82	82	83	81	81	UP					
Tata Steel Ltd	550	554	557	545	540	UP					
Tech Mahindra Ltd	377	380	383	375	373	Down					
UltraTech Cement Ltd	4088	4121	4154	4041	3993	UP					
Wipro Ltd	258	260	262	256	254	Down					
Yes Bank Ltd	1506	1515	1524	1492	1478	UP					
Zee Entertainment Enterprises	500	504	508	492	485	UP					



Thursday, July 6, 2017

HOW TO TRADE USING THE TRENDER+

CLOSING PRICES

Closing price is the price at which scrip closes on the date mentioned in the report. Traders may initiate their intraday trade on this level. The stock or index should sustain above or below the pivot else you should exit the trade.

TREND

Trend is the level at which the tendency of stocks can be identified. For best results, you can use the 'trender' to trade. A 'weak' trend denoted by "DOWN" means that traders can trade with a negative bias. If the trend is 'strong', denoted by "UP", one can trade with a positive bias on the long side. Base price should be the pivot point price.

IF THE TREND IS UP

Ideally, for a buy position, buy at the pivot point and use S1 as the stop loss for a target of levels around R2 and higher.

IF THE TREND IS DOWN

Ideally, for a sell position, sell at the pivot point and use R1 as a stop loss and S2 or lower levels as a target level.

TRENDER + : This is a broad based technical trend of the stock prevalent, may or may not be necessarily for the day.

DAILY PROJECTED RANGE : Projected Daily high and low are indicative range for the day, if the price moves out of the range the trend in that side may accelerate and turn bullish or bearish.

THE TREND AND THE DAILY PROJECTED RANGE IS BASED ON CERTAIN SIMPLE CALCULATIONS WHICH IS PROVIDED BY BLOOMBERG, EXCLUSIVELY USED BY ANAND RATHI

Disclaimer-This report has been issued by Anand Rathi Share and Stock Brokers Limited (ARSSBL), which is regulated by SEBI. The information herein was obtained from various sources; we do not guarantee its accuracy or completeness. Neither the information nor any opinion expressed constitutes an offer, or an invitation to make an offer, to buy or sell any securities or any options, futures or other derivatives related to such securities ("related investments"). ARSSBL and its affiliates may trade for their own accounts as market maker / jobber and/or arbitrageur in any securities of this issuer(s) or in related investments, and may be on the opposite side of public orders. ARSSBL, its affiliates, directors, officers and employees may have a long or short position in any securities of this issuer(s) or in related investments. ARSSBL or its affiliates may from time to time perform investment banking or other services for, or solicit investment banking or other business from, any entity mentioned in this report. This research report is prepared for private circulation. It does not have regard to the specific investment objectives, financial situation and the particular needs of any specific person who may receive this report. Investors should seek financial advice regarding the appropriateness of investing in any securities or investment strategies discussed or recommended in this report and should understand that statements regarding future prospects may not be realized. Investors should note that income from such securities, if any, may fluctuate and that each security's price or value may rise or fall. Past performance is not necessarily a guide to future performance. Foreign currency rates of exchange may adversely affect the value, price or income of any security or related investment mentioned in this report.

ANAND RATHI SHARE AND STOCK BROKERS LIMITED

4 th Floor , Silver Metropolis, Jaicoach Compound Opposite Bimbisar Nagar, Goregaon(East), Mumbai - 400063.

Tel No: +91 22 4001 3700 | Fax No: +91 22 4001 3770 | Website: www.rathi.com