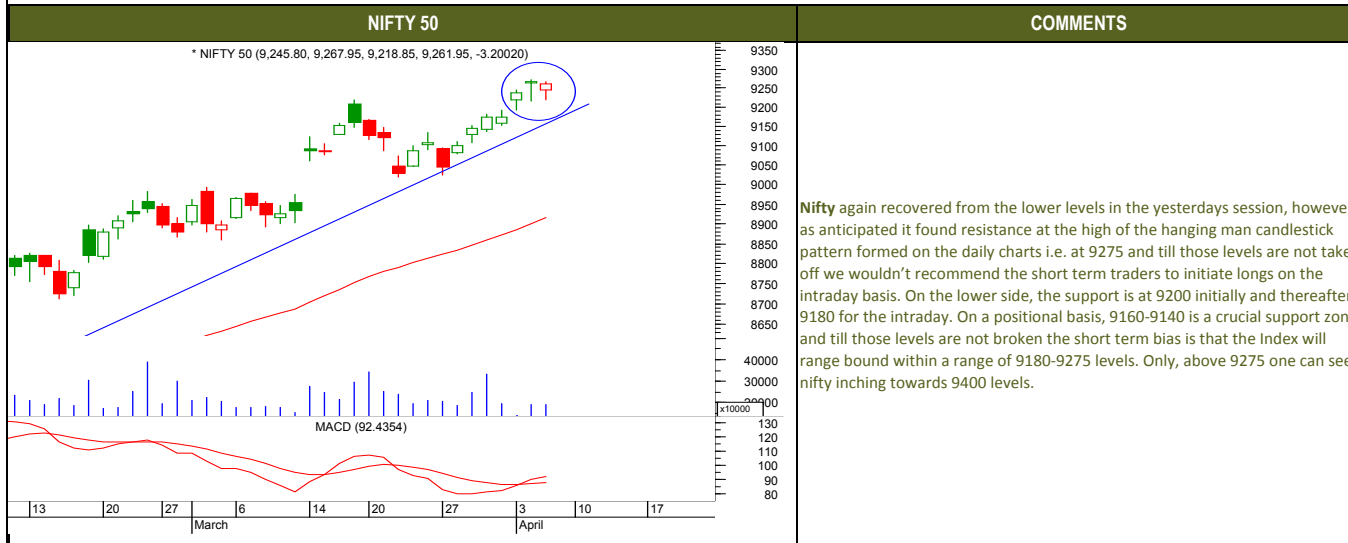




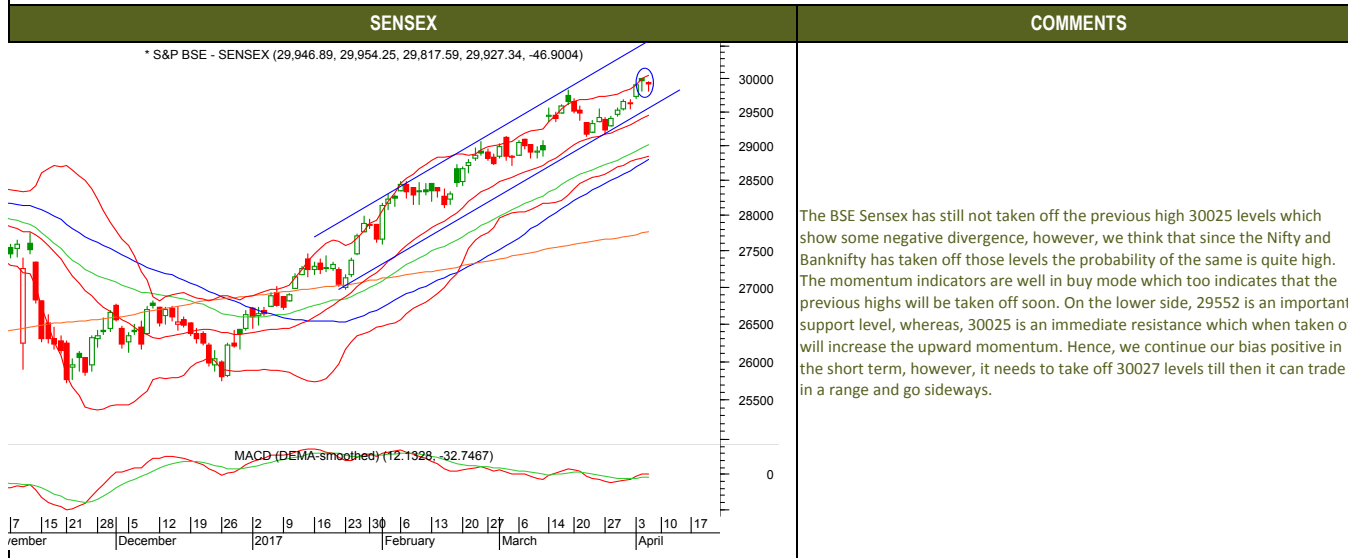
Friday, April 7, 2017

### TECHNICALS



Friday, April 7, 2017

### TECHNICALS





### TECHNICALS

#### BANK NIFTY

#### COMMENTS



The Nifty bank as anticipated closed within a broader range of 21800 levels as we had seen high amount of writing at 21800 levels. Also, the Index seems to have completed the five waves rise on the daily charts, hence a correction of the same can't be ruled out. On the lower side, 21400 is still an important support below which it can slip towards 20800 levels, whereas, on the upside, 21800 is a very crucial resistance and above those levels only it can extend it rally till 22400 levels.



Friday, April 7, 2017

### INDIAN INDICES

INDICES	CLOSE	CHANGE	% CHG
SENSEX	29927	-46.90	-0.16
NIFTY	9262	-3.20	-0.03

### TURNOVER & MARKET CAP

Rs. (Cr.)	YEST.DAY	PREV.DAY	% CHG
BSE Cash	4391	3751	17.04
NSE Cash	25412	30287	-16.10
Derivatives(bn)	2552	2042	24.98

### INSTITUTIONAL ACTIVITIES

DII Equity	-194	33	-682.91
FII Equity	340	534	-36.36
FII F&O	294	1873	-84.30

### ADVANCES & DECLINES

EXCHANGE	ADV	DECLINES	TOTAL
BSE	1481	932	2413
NSE	785	886	1671

### INDIAN ADR's

ADR	CLOSE	PREV.CLOSE	% CHG
Infosys	15.39	15.36	-0.19
HDFC Bank	76.01	75.71	-0.39
Wipro	10.00	10.14	1.40
ICICI Bank	8.71	8.64	-0.80
Sterilite Inds.	23.40	23.00	-1.71
Dr. Reddy's Lab	41.24	41.85	1.48

### SECTORAL INDICES

INDICES	BSE		NSE		
	CLOSE	%	CLOSE	%	
CNX Bank	21623	-0.14	BSE MIDCap	14277	0.15
CNX IT	10538	0.26	BSE SmallCap	14751	-0.23
CNX Realty	228	0.91	BSE 200	4035	-0.02
CNX FMCG	23349	-1.00	OTHER IMP. DATA		
CNX Infra	3197	0.03	10 Yr Gsec yield	6.76	
CNX Pharma	10470	-0.68	RS/\$	64.84	
BSE Auto	22323	-0.08	\$ Index	100.58	
BSE Metal	12002	0.40	Brent Crude (\$)	54.46	
CNX MNC	11156	-0.31	Gold (\$)	1253.48	
BSE 500	12785	-0.03	Silver (\$)	18.25	
Nifty Midcap	4445	-0.31	PE	CURRENT AVG	
BSE 100	9597	0.00	NIFTY	22.2	19.7

### TOP OUTPERFORMERS

SENSEX			NIFTY		
SYMBOL	CLOSE	%	SYMBOL	CLOSE	%
Jindal Steel	132.7	6.76	BHEL	179.1	4.58
DLF	156.4	4.48	IDFC	56.6	3.57
BHEL	178.7	4.38	AMBUJA	243.4	1.93
Tata Steel	501.7	1.68	Zee Entertainment	553.4	1.82
Reliance Inds.	1438.4	1.66	TATA STEEL	501.7	1.69

### TOP UNDERPERFORMERS

SENSEX			NIFTY		
SYMBOL	CLOSE	%	SYMBOL	CLOSE	%
Hindalco	193.9	-2.19	HINDALCO	194.0	-2.14
ITC	274.4	-1.65	ICICI Bank	280.9	-1.40
JP Asso.	14.0	-1.55	IDEA	86.6	-1.31
ICICI Bank	280.9	-1.40	COAL INDIA	286.4	-1.26
SBI	292.7	-1.35	AUROBINDO PHA	670.5	-1.04

### BSE 500

TOP OUTPERFORMERS			TOP UNDERPERFORMERS		
SYMBOL	CLOSE	%	SYMBOL	CLOSE	%
Navkar Corp Ltd	208.4	15.07	Delta Corp Ltd	185.0	-8.71
Majesco Ltd	383.4	9.00	Eros International	251.4	-7.13
McLeod Russel India Ltd	179.9	7.44	VIP Industries Ltd	204.7	-4.66
Adani Transmission Ltd	76.0	6.29	Just Dial Ltd	533.7	-3.89
Adani Power Ltd	44.3	5.23	Bliss Gvs Pharma	169.8	-3.85
Future Consumer Ltd	34.9	4.81	Muthoot Finance L	381.0	-3.80
Westlife Development Ltd	250.8	4.76	Corp Bank	53.1	-3.72
DLF Ltd	156.4	4.48	Gujarat State Ferti	121.9	-3.45
Bharat Heavy Electricals Ltd	178.7	4.38	APL Apollo Tubes	1169.2	-3.43
JSW Steel Ltd	203.8	4.30	Manappuram Fina	94.7	-3.17
Mahindra & Mahindra Financial Servi	334.2	4.15	Gujarat Pipavav P	166.5	-3.03
GIC Housing Finance Ltd	440.5	4.09	Jubilant Foodwork	1061.3	-3.03
Jaypee Infratech Ltd	11.5	4.08	Bharat Financial Ir	773.2	-3.00
Container Corp Of India Ltd	1051.8	3.92	Mahanagar Teleph	25.4	-2.87
IDFC Ltd	56.7	3.66	Gujarat Fluoroche	733.4	-2.78
Kwality Ltd	162.1	3.64	Himachal Futurist	14.0	-2.77
Tata Elxsi Ltd	1558.1	3.37	Finolex Cables Ltd	531.3	-2.69
Coat Ltd	1381.5	3.30	HCL Infosystems L	55.7	-2.62
Unitech Ltd	6.0	3.25	Intellect Design Ar	120.0	-2.60
Steel Authority of India Ltd	67.5	3.13	Sunteck Realty Ltd	396.4	-2.56
TV Today Network Ltd	286.2	3.08	Finolex Industries	576.9	-2.53
Religare Enterprises Ltd	230.3	2.95	Deepak Fertilisers	256.5	-2.45
Astra Microwave Products Ltd	116.0	2.88	Kesoram Industrie	149.8	-2.44
Force Motors Ltd	4716.1	2.61	NIIT Ltd	83.0	-2.30
Gateway Distriparks Ltd	261.8	2.61	Shipping Corp of I	77.0	-2.28



Friday, April 7, 2017

### TRENDER+ OF NIFTY 50 STOCKS

SCRIP NAME	CLOSE	R 1	R 2	S 1	S 2	TRENDER+	PIVOT TABLE					
ACC	1490	1504	1517	1467	1445	UP						
AMBUJA CEMENT	243	247	251	238	233	UP						
ASIAN PAINTS	1087	1093	1100	1076	1065	UP						
AXIS BANK	509	516	523	503	498	UP	HIGH	NIFTY	SENSEX	BANK NIFTY	CNX IT	
BAJAJ AUTO	2807	2821	2835	2787	2767	UP	LOW	9219	29818	21489		10476
BHARTI AIRTEL	342	345	348	338	334	Down	CLOSE	9262	29927	21623		10538
BHEL	179	183	186	173	167	Down	PIVOT	9250	29900	21595		10520
BPCL	646	652	658	637	627	UP	R 1	9280	29982	21702		10564
CAIRN INDIA	300	304	309	297	294	UP	R 2	9299	30036	21780		10590
CIPLA	590	598	605	585	580	UP	S 1	9231	29845	21517		10494
COAL INDIA	286	290	293	284	283	Down	S 2	9200	29763	21410		10450
LUPIN	1448	1459	1470	1439	1429	UP						
Dr.REDDY'S LABS	2718	2743	2768	2698	2678	UP						
GAIL INDIA	387	390	393	382	377	Flat						
GRASIM INDS	1069	1077	1084	1060	1050	UP						
HCL TECH	852	857	861	847	842	Down						
HDFC	1483	1496	1509	1469	1455	Down						
HDFC BANK	1439	1446	1453	1428	1418	Down						
HERO MOTOCORP	3206	3226	3245	3181	3156	Down						
HINDALCO	194	197	200	191	188	Down						
HINDUSTAN UNILEVER	935	940	946	925	915	UP						
ICICI BANK	281	283	286	279	277	Down						
IDFC	57	58	59	55	53	UP						
INDUSIND BANK	1422	1433	1444	1404	1385	UP						
INFOSYS	1000	1006	1013	992	985	Down						
ITC	274	278	281	272	270	Down						
ULTRATECH CEMENT	4111	4162	4212	4048	3984	UP						
TECH MAHINDRA	447	450	454	442	438	Down						
KOTAK MAHINDRA BANK	894	900	906	886	878	UP						
LARSEN & TOUBRO	1683	1701	1718	1667	1652	UP						
MAHINDRA & MAHINDRA	1289	1299	1310	1277	1265	Flat						
MARUTI SUZUKI	6292	6341	6391	6248	6204	UP						
ADANI PORTS & SPECIAL ECON	357	360	363	352	348	UP						
NTPC	168	169	170	166	164	UP						
ONGC	188	189	190	186	184	Flat						
POWERGRID	197	199	201	194	191	UP						
PUNJAB NATIONAL BANK	152	153	155	150	148	UP						
IDEA	87	88	90	85	84	Flat						
RELIANCE INDS	1439	1458	1477	1411	1383	UP						
ZEE ENTERTAINMENT ENTERPR	553	559	565	543	533	UP						
SAIL	67	69	70	65	63	UP						
SBI	293	296	300	290	288	Down						
VEDANTA Ltd	270	274	278	267	264	Down						
YES BANK	1565	1575	1586	1554	1544	UP						
SUNPHARMA	687	694	700	682	677	Down						
TATA MOTORS	473	478	482	470	466	UP						
TATA POWER	87	88	89	87	86	Down						
TATA STEEL	502	509	517	489	476	UP						
TCS	2400	2410	2420	2390	2380	Down						
WIPRO	515	518	521	509	503	UP						



Friday, April 7, 2017

## HOW TO TRADE USING THE TRENDER+

## CLOSING PRICES

Closing price is the price at which scrip closes on the date mentioned in the report. Traders may initiate their intraday trade on this level. The stock or index should sustain above or below the pivot else you should exit the trade.

## TREND

Trend is the level at which the tendency of stocks can be identified. For best results, you can use the 'trender' to trade. A 'weak' trend denoted by "DOWN" means that traders can trade with a negative bias. If the trend is 'strong', denoted by "UP", one can trade with a positive bias on the long side. Base price should be the pivot point price.

## IF THE TREND IS UP

Ideally, for a buy position, buy at the pivot point and use S1 as the stop loss for a target of levels around R2 and higher.

## IF THE TREND IS DOWN

Ideally, for a sell position, sell at the pivot point and use R1 as a stop loss and S2 or lower levels as a target level.

**TRENDER +** : This is a broad based technical trend of the stock prevalent, may or may not be necessarily for the day.

**DAILY PROJECTED RANGE** : Projected Daily high and low are indicative range for the day, if the price moves out of the range the trend in that side may accelerate and turn bullish or bearish.

THE TREND AND THE DAILY PROJECTED RANGE IS BASED ON CERTAIN SIMPLE CALCULATIONS WHICH IS PROVIDED BY BLOOMBERG, EXCLUSIVELY USED BY ANAND RATHI

**Disclaimer**-This report has been issued by Anand Rathi Share and Stock Brokers Limited (ARSSBL), which is regulated by SEBI. The information herein was obtained from various sources; we do not guarantee its accuracy or completeness. Neither the information nor any opinion expressed constitutes an offer, or an invitation to make an offer, to buy or sell any securities or any options, futures or other derivatives related to such securities ("related investments"). ARSSBL and its affiliates may trade for their own accounts as market maker / jobber and/or arbitrageur in any securities of this issuer(s) or in related investments, and may be on the opposite side of public orders. ARSSBL, its affiliates, directors, officers, and employees may have a long or short position in any securities of this issuer(s) or in related investments. ARSSBL or its affiliates may from time to time perform investment banking or other services for, or solicit investment banking or other business from, any entity mentioned in this report. This research report is prepared for private circulation. It does not have regard to the specific investment objectives, financial situation and the particular needs of any specific person who may receive this report. Investors should seek financial advice regarding the propriety of investing in any securities or investment strategies discussed or recommended in this report and should understand that statements regarding future prospects may not be realized. Investors should note that income from such securities, if any, may fluctuate and that each security's price or value may rise or fall. Past performance is not necessarily a guide to future performance. Foreign currency rates of exchange may adversely affect the value, price or income of any security or related investment mentioned in this report.

ANAND RATHI SHARE AND STOCK BROKERS LIMITED

4 th Floor , Silver Metropolis, Jaicoach Compound Opposite Bimbisar Nagar, Goregaon(East), Mumbai - 400063.

Tel No: +91 22 4001 3700 | Fax No: +91 22 4001 3770 | Website: www.rathi.com