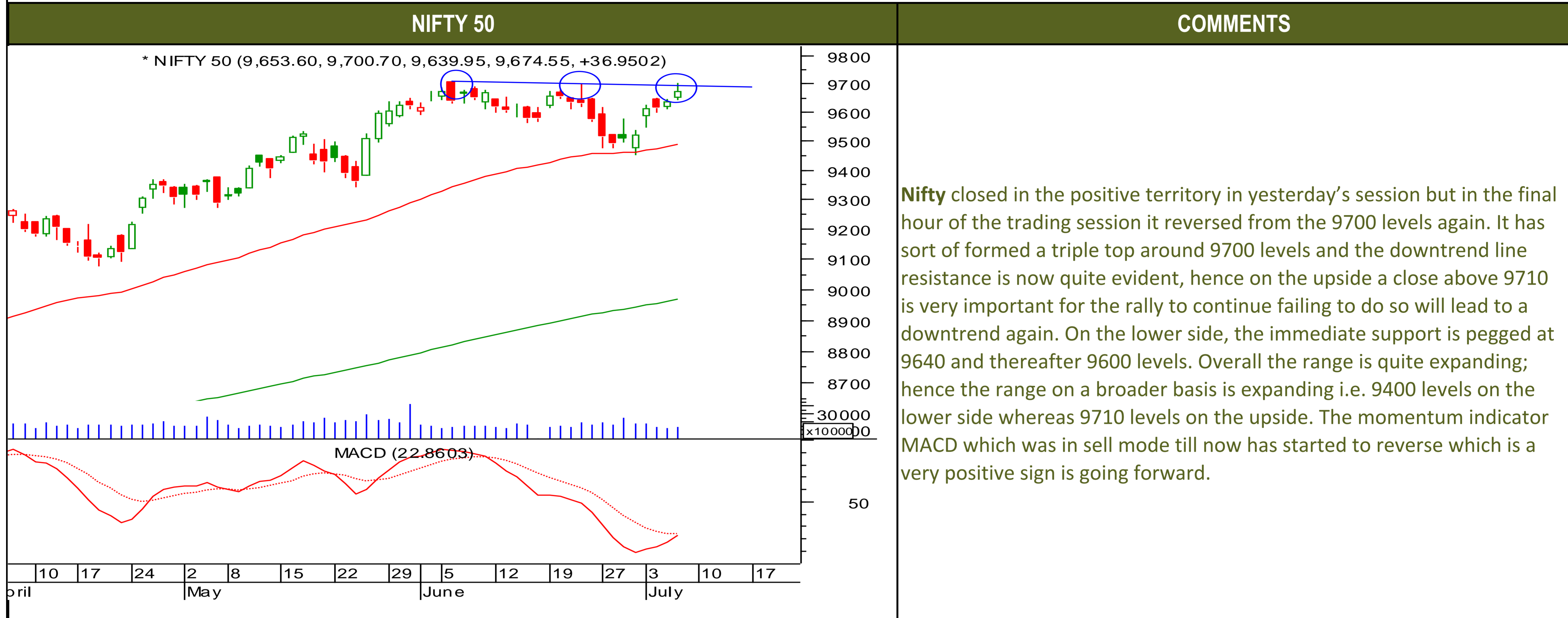




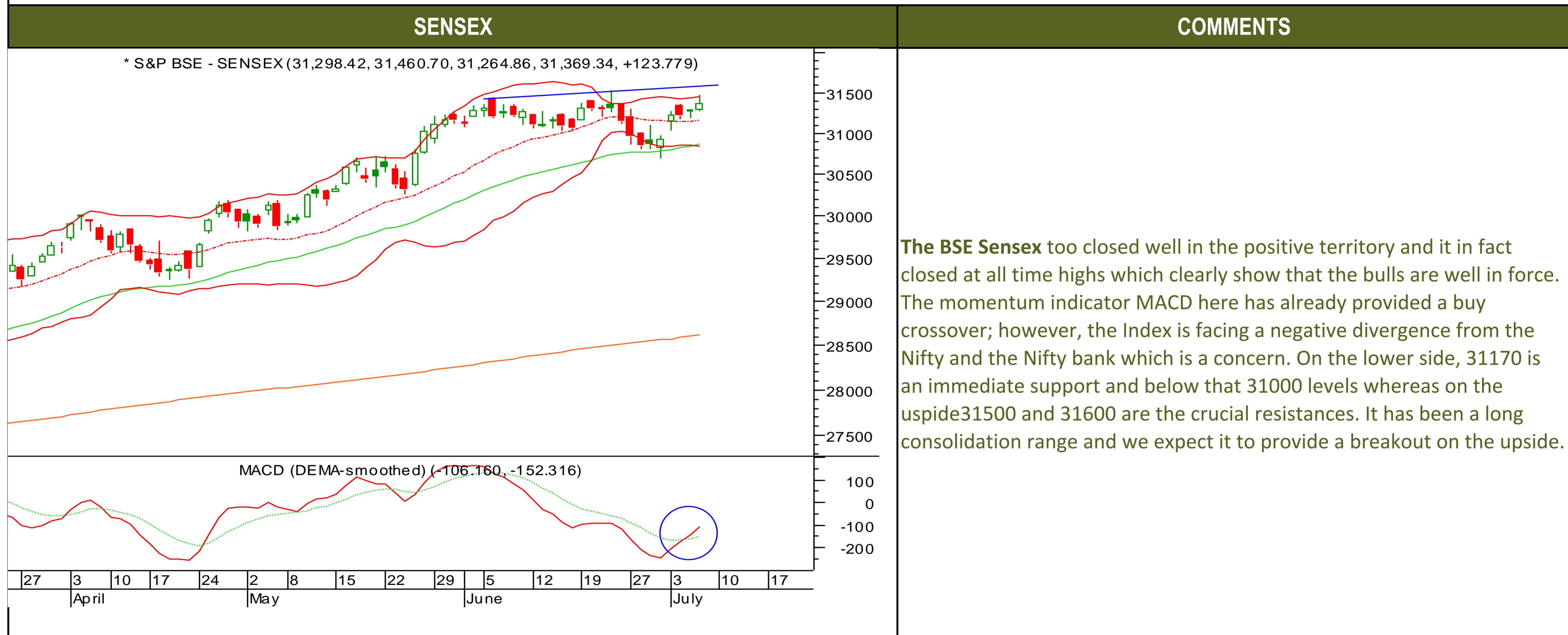
Friday, July 7, 2017

### TECHNICALS



Friday, July 7, 2017

### TECHNICALS





Friday, July 7, 2017

### TECHNICALS

#### BANK NIFTY

#### COMMENTS



The Nifty bank closed in the positive territory in yesterday session thus continuing to retrace the previous fall. It has already retraced 61.8% of its previous fall and we saw the weekly expiry between 23400-23500 zones as anticipated. On the lower side, the immediate support is pegged at 23300 levels and below those 23100 levels whereas 23600 is a very strong resistance and till those levels are not taken off the Nifty bank can remain under pressure. The momentum indicator MACD has reversed and it may provide a buy crossover and post that only we may see some good sustainable up move.





Friday, July 7, 2017

### INDIAN INDICES

INDICES	CLOSE	CHANGE	% CHG
SENSEX	31369	123.78	0.40
NIFTY	9675	36.95	0.38

### TURNOVER & MARKET CAP

Rs. (Cr.)	YEST'DAY	PREV.DAY	% CHG
BSE Cash	3140	3840	-18.24
NSE Cash	24070	22034	9.24
Derivatives(bn)	4703	4226	11.30

### INSTITUTIONAL ACTIVITIES

DII Equity	75	296	-74.53
FII Equity	228	-834	-127.27
FII F&O	1422	709	100.59

### ADVANCES & DECLINES

EXCHANGE	ADV	DECLINES	TOTAL
BSE	1557	968	2525
NSE	967	720	1687

### INDIAN ADR's

ADR	CLOSE	PREV.CLOSE	% CHG
Infosys	15.14	14.94	-1.32
HDFC Bank	87.92	88.04	0.14
Wipro	5.21	5.21	0.00
ICICI Bank	8.97	9.07	1.11
Sterlite Inds.	23.70	23.65	-0.21
Dr. Reddy's Lab	41.48	41.16	-0.77

### SECTORAL INDICES

BSE			NSE		
INDICES	CLOSE	%	INDICES	CLOSE	%
CNX Bank	23467	0.49	BSE MIDcap	14947	0.30
CNX IT	10149	-0.12	BSE SmallCap	15790	0.31
CNX Reality	275	1.76	BSE 200	4220	0.32
CNX FMCG	27582	0.85	<b>OTHER IMP. DATA</b>		
CNX Infra	3236	0.30	<b>10 Yr Gsec yield</b>	6.53	
CNX Pharma	9598	0.10	<b>RS/\$</b>	64.79	
BSE Auto	23860	0.37	<b>\$ Index</b>	96.14	
BSE Metal	11773	0.32	<b>Brent Crude (\$)</b>	48.48	
CNX MNC	12418	0.32	<b>Gold (\$)</b>	1225.30	
BSE 500	13412	0.33	<b>Silver (\$)</b>	16.03	
Nifty Midcap	4641	0.32	<b>PE</b>	<b>CURRENT AVG</b>	
BSE 100	10025	0.36	NIFTY	23.4	19.7

### TOP OUTPERFORMERS

SENSEX			NIFTY	
SYMBOL	CLOSE	%	SYMBOL	CLOSE
SBI	280.9	2.15	BHARTI INFRATEL	414.7
DLF	201.2	1.90	SBI	281.0
ITC	336.8	1.72	ITC	337.1
Coal India	251.3	1.52	COAL INDIA	251.5
Bharti Airtel	381.4	1.36	BHARTI	381.3

### TOP UNDERPERFORMERS

SENSEX			NIFTY	
SYMBOL	CLOSE	%	SYMBOL	CLOSE
Bajaj Auto	2729.6	-1.52	BAJAJ AUTO	2728.6
Hindalco	196.6	-1.11	GRASIM	1272.4
Sun Pharma	544.9	-1.04	HINDALCO	196.7
ONGC	161.4	-0.77	SUNPHARMA	545.6
M&M	1376.9	-0.59	AXIS BANK	509.5

### BSE 500

TOP OUTPERFORMERS			TOP UNDERPERFORMERS	
SYMBOL	CLOSE	%	SYMBOL	CLOSE
Gayatri Projects Ltd	169.0	11.01	Narayana Hrudayalaya Ltd	297.5
Indian Bank	303.0	8.08	JSW Energy Ltd	64.7
AstraZeneca Pharma India Ltd	1030.0	7.06	Network 18 Media & Investments Ltd	51.3
Prestige Estates Projects Ltd	267.1	6.93	Mahindra CIE Automotive Ltd	237.1
Redington India Ltd	135.8	6.89	Page Industries Ltd	17388.7
Future Consumer Ltd	34.0	6.26	Welspun Corp Ltd	105.4
Future Retail Ltd	394.0	5.89	Swan Energy Ltd	131.2
Gujarat Fluorochemicals Ltd	782.2	5.60	Chambal Fertilizers and Chemicals Ltd	133.2
Central Bank of India	91.7	4.98	Avanti Feeds Ltd	1557.0
Videcon Industries Ltd	25.1	4.80	Indoco Remedies Ltd	197.1
Manappuram Finance Ltd	102.1	4.77	Tamil Nadu Newsprint & Papers Ltd	310.9
Punjab National Bank	143.3	4.56	Gujarat Narmada Valley Fertilizers & Chemi	277.2
Unitech Ltd	6.5	4.49	Alembic Pharmaceuticals Ltd	507.6
Rain Industries Ltd	122.7	4.38	Kesoram Industries Ltd	148.0
Trident Ltd/India	79.5	4.33	Bharat Financial Inclusion Ltd	724.4
Piramal Enterprises Ltd	2938.3	4.23	TAKE Solutions Ltd	170.7
Uflex Ltd	402.4	3.89	Sharda Cropchem Ltd	482.1
Sobha Ltd	396.1	3.79	Relaxo Footwears Ltd	508.0
IL&FS Transportation Networks Ltd	101.9	3.77	TV Today Network Ltd	245.9
Linde India Ltd	445.5	3.74	Rajesh Exports Ltd	664.5
Delta Corp Ltd	164.3	3.56	Sterlite Technologies Ltd	155.4
IDBI Bank Ltd	57.4	3.33	Mahanagar Telephone Nigam Ltd	20.9
Allahabad Bank	69.7	3.26	CCL Products India Ltd	302.1
Syndicate Bank	76.7	3.09	Dish TV India Ltd	79.8
GHCL Ltd	243.4	3.07	SRF Ltd	1534.4





### TRENDER+ OF NIFTY 50 STOCKS

SCRIP NAME	CLOSE	R 1	R 2	S 1	S 2	TRENDER+	PIVOT TABLE				
ACC Ltd	1612	1626	1640	1593	1574	UP					
Adani Ports & Special Econom	373	375	378	371	369	UP					
Ambuja Cements Ltd	257	259	261	254	251	UP					
Asian Paints Ltd	1129	1139	1150	1123	1117	Flat	HIGH	NIFTY	SENSEX	BANK NIFTY	CNX IT
Aurobindo Pharma Ltd	683	688	693	678	673	UP	LOW	9640	31265	23370	10127
Axis Bank Ltd	510	512	515	507	505	UP	CLOSE	9675	31369	23467	10149
Bajaj Auto Ltd	2729	2739	2749	2721	2713	Down	PIVOT	9672	31365	23459	10158
Bank of Baroda	162	165	168	161	159	Flat	R 1	9704	31465	23548	10189
Bharat Petroleum Corp Ltd	660	664	667	657	654	Flat	R 2	9732	31561	23629	10229
Bharti Airtel Ltd	381	385	388	376	370	UP	S 1	9643	31269	23377	10118
Bharti Infratel Ltd	415	421	427	403	392	UP	S 2	9611	31169	23288	10087
Bosch Ltd	23800	23962	24125	23575	23350	Flat					
Cipla Ltd/India	543	547	551	539	536	Down					
Coal India Ltd	251	254	256	248	245	Flat					
Dr Reddy's Laboratories Ltd	2668	2684	2700	2647	2626	UP					
Eicher Motors Ltd	27689	28052	28416	27453	27218	Flat					
GAIL India Ltd	362	365	368	358	354	UP					
Grasim Industries Ltd	1272	1286	1300	1262	1252	UP					
HCL Technologies Ltd	841	843	846	837	833	Down					
HDFC Bank Ltd	1658	1664	1669	1652	1646	UP					
Hero MotoCorp Ltd	3725	3744	3763	3707	3689	Flat					
Hindalco Industries Ltd	197	199	201	195	194	UP					
Hindustan Unilever Ltd	1093	1097	1102	1087	1082	Flat					
Housing Development Finance	1648	1660	1673	1629	1611	UP					
ICICI Bank Ltd	294	295	296	292	291	UP					
Indiabulls Housing Finance Ltd	1083	1104	1125	1060	1037	Flat					
Indian Oil Corp Ltd	382	385	388	380	377	Down					
IndusInd Bank Ltd	1520	1527	1534	1509	1499	UP					
Infosys Ltd	947	955	962	942	937	Down					
ITC Ltd	337	340	343	333	328	UP					
Kotak Mahindra Bank Ltd	958	963	967	954	950	Flat					
Larsen & Toubro Ltd	1698	1706	1715	1690	1682	Flat					
Lupin Ltd	1081	1101	1121	1069	1057	Flat					
Mahindra & Mahindra Ltd	1376	1390	1404	1366	1356	UP					
Maruti Suzuki India Ltd	7474	7523	7571	7401	7328	UP					
NTPC Ltd	158	159	160	157	156	Down					
Oil & Natural Gas Corp Ltd	162	163	165	160	158	Flat					
Power Grid Corp of India Ltd	209	211	212	209	208	Down					
Reliance Industries Ltd	1443	1449	1456	1437	1432	UP					
State Bank of India	281	284	288	276	271	UP					
Sun Pharmaceutical Industries	546	551	556	542	538	UP					
Tata Consultancy Services Ltd	2348	2360	2372	2338	2328	Down					
Tata Motors Ltd	266	268	269	265	264	Flat					
Tata Motors Ltd	437	439	442	434	432	Flat					
Tata Power Co Ltd/The	82	82	83	82	81	UP					
Tata Steel Ltd	555	558	562	550	545	UP					
Tech Mahindra Ltd	376	379	383	373	370	Down					
UltraTech Cement Ltd	4107	4136	4164	4073	4039	UP					
Wipro Ltd	258	260	262	256	254	Down					
Yes Bank Ltd	1504	1517	1530	1493	1482	UP					
Zee Entertainment Enterprises	501	503	505	499	497	UP					



## HOW TO TRADE USING THE TRENDER+

### CLOSING PRICES

Closing price is the price at which scrip closes on the date mentioned in the report. Traders may initiate their intraday trade on this level. The stock or index should sustain above or below the pivot else you should exit the trade.

### TREND

Trend is the level at which the tendency of stocks can be identified. For best results, you can use the 'trender' to trade. A 'weak' trend denoted by "DOWN" means that traders can trade with a negative bias. If the trend is 'strong', denoted by "UP", one can trade with a positive bias on the long side. Base price should be the pivot point price.

### IF THE TREND IS UP

Ideally, for a buy position, buy at the pivot point and use S1 as the stop loss for a target of levels around R2 and higher.

### IF THE TREND IS DOWN

Ideally, for a sell position, sell at the pivot point and use R1 as a stop loss and S2 or lower levels as a target level.

**TRENDER +** : This is a broad based technical trend of the stock prevalent, may or may not be necessarily for the day.

**DAILY PROJECTED RANGE** : Projected Daily high and low are indicative range for the day, if the price moves out of the range the trend in that side may accelerate and turn bullish or bearish.

THE TREND AND THE DAILY PROJECTED RANGE IS BASED ON CERTAIN SIMPLE CALCULATIONS WHICH IS PROVIDED BY BLOOMBERG, EXCLUSIVELY USED BY ANAND RATHI

**Disclaimer**-This report has been issued by Anand Rathi Share and Stock Brokers Limited (ARSSBL), which is regulated by SEBI. The information herein was obtained from various sources; we do not guarantee its accuracy or completeness. Neither the information nor any opinion expressed constitutes an offer, or an invitation to make an offer, to buy or sell any securities or any options, futures or other derivatives related to such securities ("related investments"). ARSSBL and its affiliates may trade for their own accounts as market maker / jobber and/or arbitrageur in any securities of this issuer(s) or in related investments, and may be on the opposite side of public orders. ARSSBL, its affiliates, directors, officers, and employees may have a long or short position in any securities of this issuer(s) or in related investments. ARSSBL or its affiliates may from time to time perform investment banking or other services for, or solicit investment banking or other business from, any entity mentioned in this report. This research report is prepared for private circulation. It does not have regard to the specific investment objectives, financial situation and the particular needs of any specific person who may receive this report. Investors should seek financial advice regarding the appropriateness of investing in any securities or investment strategies discussed or recommended in this report and should understand that statements regarding future prospects may not be realized. Investors should note that income from such securities, if any, may fluctuate and that each security's price or value may rise or fall. Past performance is not necessarily a guide to future performance. Foreign currency rates of exchange may adversely affect the value, price or income of any security or related investment mentioned in this report.

ANAND RATHI SHARE AND STOCK BROKERS LIMITED

4 th Floor , Silver Metropolis, Jaicoach Compound Opposite Bimbisar Nagar, Goregaon(East), Mumbai - 400063.

Tel No: +91 22 4001 3700 | Fax No: +91 22 4001 3770 | Website: www.rathi.com