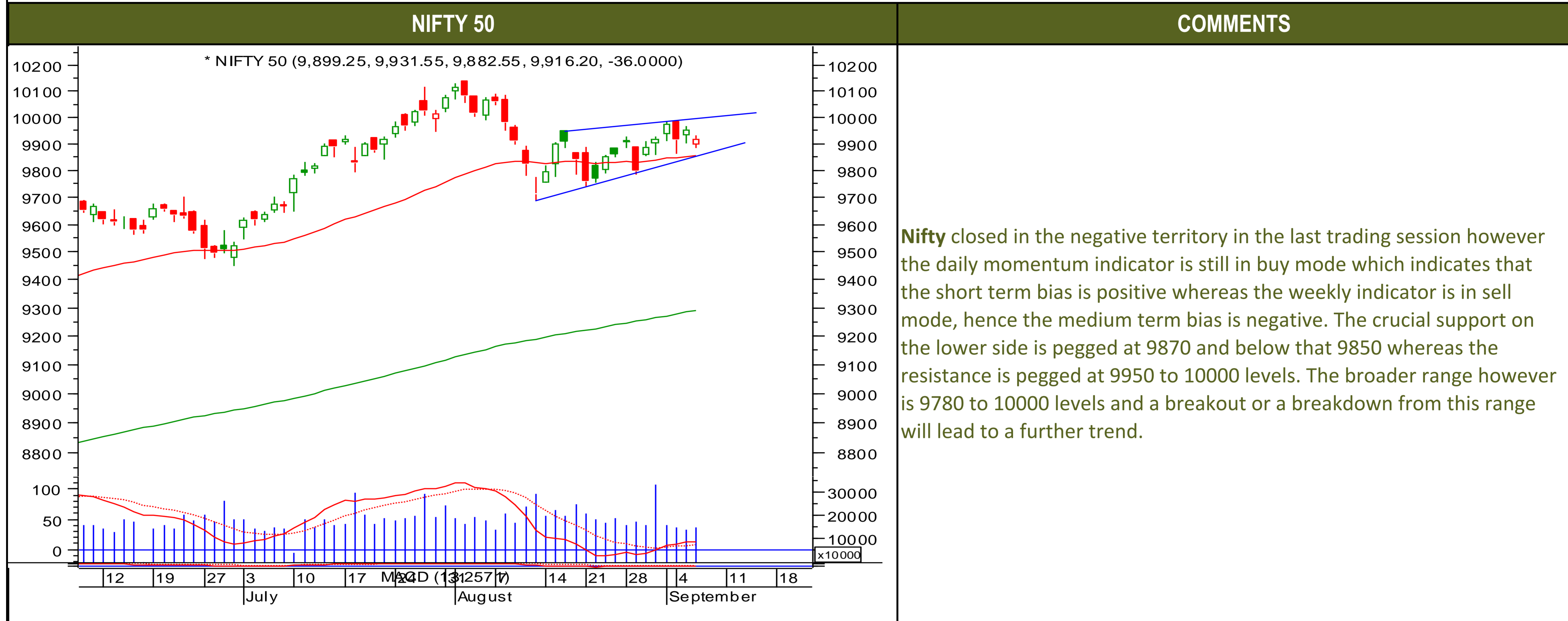




Thursday, September 7, 2017

TECHNICALS



Thursday, September 7, 2017

TECHNICALS

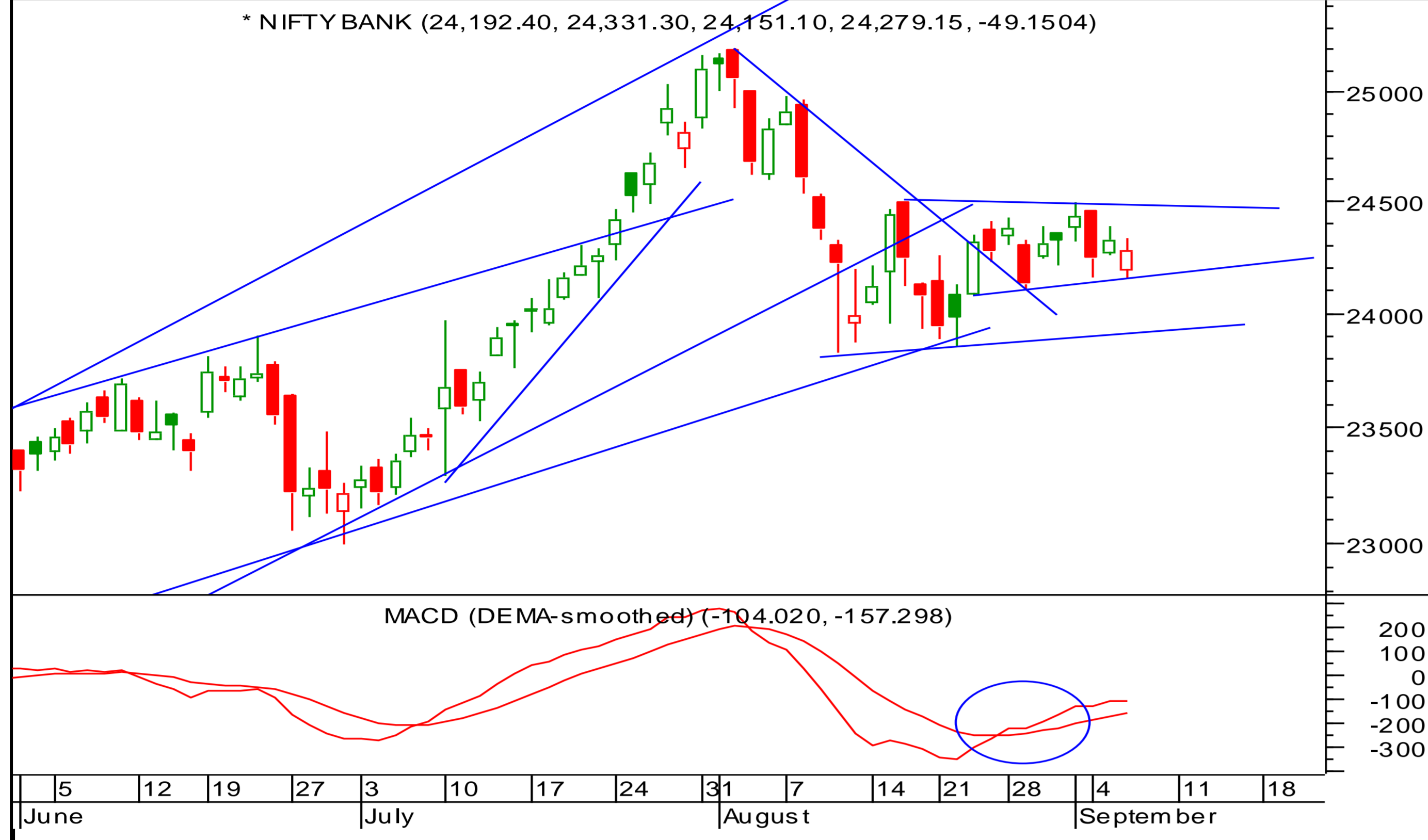




TECHNICALS

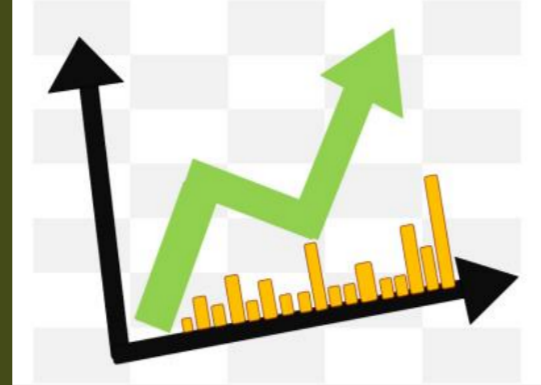
BANK NIFTY

* NIFTY BANK (24,192.40, 24,331.30, 24,151.10, 24,279.15, -49.1504)



COMMENTS

The Nifty bank closed in the negative territory as well however the daily has reversed from an oversold territory whereas the weekly continues in the negative territory. The ranges for the Nifty bank is quite clear i.e. 23900 to 24450 in the short term whereas 23800-23600 on a broader time frame. Now, a breakout or a breakdown from this range will thereafter lead to a further trend. So, till there isn't a clear breakout, the traders are advised to trade the range with a contrarian approach at the extremes of the range.



Thursday, September 7, 2017

INDIAN INDICES

INDICES	CLOSE	CHANGE	% CHG
SENSEX	31662	-147.58	-0.46
NIFTY	9916	-36.00	-0.36

TURNOVER & MARKET CAP

Rs. (Cr.)	YEST'DAY	PREV.DAY	% CHG
BSE Cash	3162	3397	-6.92
NSE Cash	26792	23777	12.68
Derivatives(bn)	3846	4636	-17.04

INSTITUTIONAL ACTIVITIES

DII Equity	474	-49	-1066.11
FII Equity	-379	-874	-56.61
FII F&O	1280	782	63.78

ADVANCES & DECLINES

EXCHANGE	ADV	DECLINES	TOTAL
BSE	1344	1251	2595
NSE	865	809	1674

INDIAN ADR's

ADR	CLOSE	PREV.CLOSE	% CHG
Infosys	14.84	14.65	-1.28
HDFC Bank	97.42	94.10	-3.41
Wipro	5.92	5.92	0.00
ICICI Bank	9.40	9.19	-2.23
Sterlite Inds.	22.55	21.90	-2.88
Dr. Reddy's Lab	34.67	33.85	-2.37

SECTORAL INDICES

BSE			NSE		
INDICES	CLOSE	%	INDICES	CLOSE	%
CNX Bank	24279	-0.20	BSE MIDcap	15705	0.17
CNX IT	10422	-0.73	BSE SmallCap	16250	0.35
CNX Reality	287	0.07	BSE 200	4348	-0.22
CNX FMCG	25473	-1.34	OTHER IMP. DATA		
CNX Infra	3272	-0.50	10 Yr Gsec yield	6.49	
CNX Pharma	8897	-1.55	RS/\$	64.13	
BSE Auto	24001	-0.11	\$ Index	92.20	
BSE Metal	13762	0.67	Brent Crude (\$)	53.86	
CNX MNC	13248	-0.07	Gold (\$)	1340.21	
BSE 500	13818	-0.17	Silver (\$)	17.97	
Nifty Midcap	4797	-0.07	PE	CURRENT AVG	
BSE 100	10331	-0.25	NIFTY	23.3	19.7

TOP OUTPERFORMERS

SENSEX			NIFTY	
SYMBOL	CLOSE	%	SYMBOL	CLOSE
Hindalco	245.9	1.63	IDFC	60.3
Jindal Steel	141.4	0.82	HINDALCO	245.8
Reliance Inds.	1644.6	0.71	ULTRATECHCEM	4150.3
Coal India	255.5	0.71	GAIL	382.3
DLF	192.5	0.68	YES BANK	1794.0

TOP UNDERPERFORMERS

SENSEX			NIFTY	
SYMBOL	CLOSE	%	SYMBOL	CLOSE
Sun Pharma	475.0	-3.73	SUNPHARMA	474.3
ITC	275.6	-2.43	LUPIN	971.4
JP Asso.	23.7	-1.25	AXIS BANK	492.9
SBI	274.2	-1.12	TATA MOTORS	382.7
Tata Motors	383.4	-1.03	ADANI PORTS & SPECIAL ECONOMIC ZO	385.1

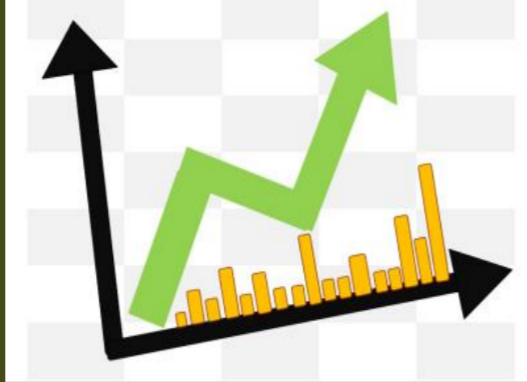
BSE 500

TOP OUTPERFORMERS			TOP UNDERPERFORMERS	
SYMBOL	CLOSE	%	SYMBOL	CLOSE
Himachal Futuristic Communication	25.6	19.91	Vijaya Bank	62.9
Jai Corp Ltd	98.4	15.22	Religare Enterprises Ltd	40.5
Future Consumer Ltd	55.3	10.49	Sun Pharmaceutical Industries Ltd	475.0
Muthoot Finance Ltd	504.9	8.28	Dynatomic Technologies Ltd	2475.7
Himatsingka Seide Ltd	376.0	7.71	Divi's Laboratories Ltd	699.9
Indo Count Industries Ltd	122.2	5.62	Punjab National Bank	138.9
Tata Coffee Ltd	151.4	5.51	GHCL Ltd	232.8
Bombay Dyeing & Manufacturing Co	146.1	4.99	Trent Ltd	290.5
Unitech Ltd	8.0	4.99	Cadila Healthcare Ltd	495.7
Edelweiss Financial Services Ltd	254.5	4.95	Godrej Consumer Products Ltd	900.6
Prism Cement Ltd	114.8	4.84	FDC Ltd/India	170.9
Tata Global Beverages Ltd	205.8	4.68	Balmer Lawrie & Co Ltd	238.4
Firstsource Solutions Ltd	39.4	4.52	Phoenix Mills Ltd/The	496.5
Capital First Ltd	773.8	4.47	Kitex Garments Ltd	239.3
Mahanagar Telephone Nigam Ltd	20.0	4.45	ITC Ltd	275.6
Bajaj Finance Ltd	1857.8	3.93	InterGlobe Aviation Ltd	1227.4
Equitas Holdings Ltd/India	179.3	3.85	Union Bank of India	134.1
Manappuram Finance Ltd	106.8	3.79	Greaves Cotton Ltd	152.3
Rashtriya Chemicals & Fertilizers Ltd	101.4	3.79	DEN Networks Ltd	86.2
DCM Shriram Ltd	420.1	3.47	Tata Motors Ltd	214.6
Motherson Sumi Systems Ltd	325.8	3.31	Alkem Laboratories Ltd	1764.5
J Kumar Infraprojects Ltd	199.1	3.13	Bosch Ltd	21800.4
Mahanagar Gas Ltd	1109.9	3.09	Gateway Distriparks Ltd	215.9
Ujjivan Financial Services Ltd	374.1	3.04	Lupin Ltd	971.3
UCO Bank	32.2	3.04	Central Bank of India	98.7



TRENDER+ OF NIFTY 50 STOCKS

SCRIP NAME	CLOSE	R 1	R 2	S 1	S 2	TRENDER+	PIVOT TABLE				
								NIFTY	SENSEX	BANK NIFTY	CNX IT
ACC Ltd	1807	1818	1829	1794	1782	UP					
Adani Ports & Special Econom	385	388	391	383	382	Down					
Ambuja Cements Ltd	283	286	290	280	277	UP					
Asian Paints Ltd	1206	1214	1221	1198	1190	UP	HIGH	9932	31728	24331	10485
Aurobindo Pharma Ltd	747	755	763	739	730	UP	LOW	9883	31587	24151	10408
Axis Bank Ltd	493	499	506	489	485	UP	CLOSE	9916	31662	24279	10422
Bajaj Auto Ltd	2921	2940	2959	2901	2881	UP	PIVOT	9910	31659	24254	10438
Bank of Baroda	138	140	141	137	135	Flat	R 1	9938	31731	24357	10468
Bharat Petroleum Corp Ltd	535	538	542	531	526	UP	R 2	9959	31800	24434	10515
Bharti Airtel Ltd	403	405	407	401	399	Down	S 1	9889	31590	24176	10391
Bharti Infratel Ltd	371	374	377	368	365	Down	S 2	9861	31517	24074	10361
Bosch Ltd	21662	22061	22461	21381	21101	Down					
Cipla Ltd/India	558	561	564	555	551	Down					
Coal India Ltd	256	259	261	252	248	UP					
Dr Reddy's Laboratories Ltd	2197	2211	2226	2179	2161	UP					
Eicher Motors Ltd	32083	32257	32432	31772	31461	UP					
GAIL India Ltd	382	388	394	376	369	UP					
Grasim Industries Ltd	1186	1196	1206	1171	1156	UP					
HCL Technologies Ltd	851	867	882	841	831	Down					
HDFC Bank Ltd	1760	1769	1778	1744	1729	UP					
Hero MotoCorp Ltd	3951	3984	4017	3929	3907	Down					
Hindalco Industries Ltd	246	250	254	239	232	UP					
Hindustan Unilever Ltd	1206	1212	1218	1200	1195	Down					
Housing Development Finance	1775	1785	1795	1757	1739	UP					
ICICI Bank Ltd	295	296	297	294	294	Down					
Indiabulls Housing Finance Ltd	1264	1285	1305	1233	1201	UP					
Indian Oil Corp Ltd	428	434	440	424	420	Down					
IndusInd Bank Ltd	1685	1695	1705	1674	1663	UP					
Infosys Ltd	896	901	906	890	885	Down					
ITC Ltd	276	279	283	274	272	UP					
Kotak Mahindra Bank Ltd	996	1009	1023	981	967	UP					
Larsen & Toubro Ltd	1118	1124	1130	1114	1110	Down					
Lupin Ltd	971	986	1001	962	952	Down					
Mahindra & Mahindra Ltd	1317	1324	1332	1309	1302	UP					
Maruti Suzuki India Ltd	7847	7910	7974	7776	7706	UP					
NTPC Ltd	170	171	171	169	168	Flat					
Oil & Natural Gas Corp Ltd	162	163	165	162	161	UP					
Power Grid Corp of India Ltd	214	216	218	213	211	Down					
Reliance Industries Ltd	1645	1658	1670	1628	1611	UP					
State Bank of India	274	276	278	273	272	UP					
Sun Pharmaceutical Industries	474	483	492	469	464	UP					
Tata Consultancy Services Ltd	2453	2469	2484	2444	2435	Down					
Tata Motors Ltd	215	217	219	213	212	Down					
Tata Motors Ltd	383	386	389	381	379	Down					
Tata Power Co Ltd/The	78	78	79	78	77	Down					
Tata Steel Ltd	653	658	662	647	641	UP					
Tech Mahindra Ltd	425	428	430	421	418	UP					
UltraTech Cement Ltd	4150	4187	4223	4096	4042	UP					
Wipro Ltd	297	298	299	296	295	Down					
Yes Bank Ltd	1794	1812	1830	1769	1745	UP					
Zee Entertainment Enterprises	520	521	522	519	518	UP					



Thursday, September 7, 2017

HOW TO TRADE USING THE TRENDER+

CLOSING PRICES

Closing price is the price at which scrip closes on the date mentioned in the report. Traders may initiate their intraday trade on this level. The stock or index should sustain above or below the pivot else you should exit the trade.

TREND

Trend is the level at which the tendency of stocks can be identified. For best results, you can use the 'trender' to trade. A 'weak' trend denoted by "DOWN" means that traders can trade with a negative bias. If the trend is 'strong', denoted by "UP", one can trade with a positive bias on the long side. Base price should be the pivot point price.

IF THE TREND IS UP

Ideally, for a buy position, buy at the pivot point and use S1 as the stop loss for a target of levels around R2 and higher.

IF THE TREND IS DOWN

Ideally, for a sell position, sell at the pivot point and use R1 as a stop loss and S2 or lower levels as a target level.

TRENDER + : This is a broad based technical trend of the stock prevalent, may or may not be necessarily for the day.

DAILY PROJECTED RANGE : Projected Daily high and low are indicative range for the day, if the price moves out of the range the trend in that side may accelerate and turn bullish or bearish.

THE TREND AND THE DAILY PROJECTED RANGE IS BASED ON CERTAIN SIMPLE CALCULATIONS WHICH IS PROVIDED BY BLOOMBERG, EXCLUSIVELY USED BY ANAND RATHI

Disclaimer: This report has been issued by Anand Rathi Share and Stock Brokers Limited (ARSSBL), which is regulated by SEBI. The information herein was obtained from various sources; we do not guarantee its accuracy or completeness. Neither the information nor any opinion expressed constitutes an offer, or an invitation to make an offer, to buy or sell any securities or any options, futures or other derivatives related to such securities ("related investments"). ARSSBL and its affiliates may trade for their own accounts as market maker / jobber and/or arbitrageur in any securities of this issuer(s) or in related investments, and may be on the opposite side of public orders. ARSSBL, its affiliates, directors, officers, and employees may have a long or short position in any securities of this issuer(s) or in related investments. ARSSBL or its affiliates may from time to time perform investment banking or other services for, or solicit investment banking or other business from, any entity mentioned in this report. This research report is prepared for private circulation. It does not have regard to the specific investment objectives, financial situation and the particular needs of any specific person who may receive this report. Investors should seek financial advice regarding the appropriateness of investing in any securities or investment strategies discussed or recommended in this report and should understand that statements regarding future prospects may not be realized. Investors should note that income from such securities, if any, may fluctuate and that each security's price or value may rise or fall. Past performance is not necessarily a guide to future performance. Foreign currency rates of exchange may adversely affect the value, price or income of any security or related investment mentioned in this report.

ANAND RATHI SHARE AND STOCK BROKERS LIMITED

4 th Floor , Silver Metropolis, Jaicoach Compound Opposite Bimbisar Nagar, Goregaon(East), Mumbai - 400063.

Tel No: +91 22 4001 3700 | Fax No: +91 22 4001 3770 | Website: www.rathi.com