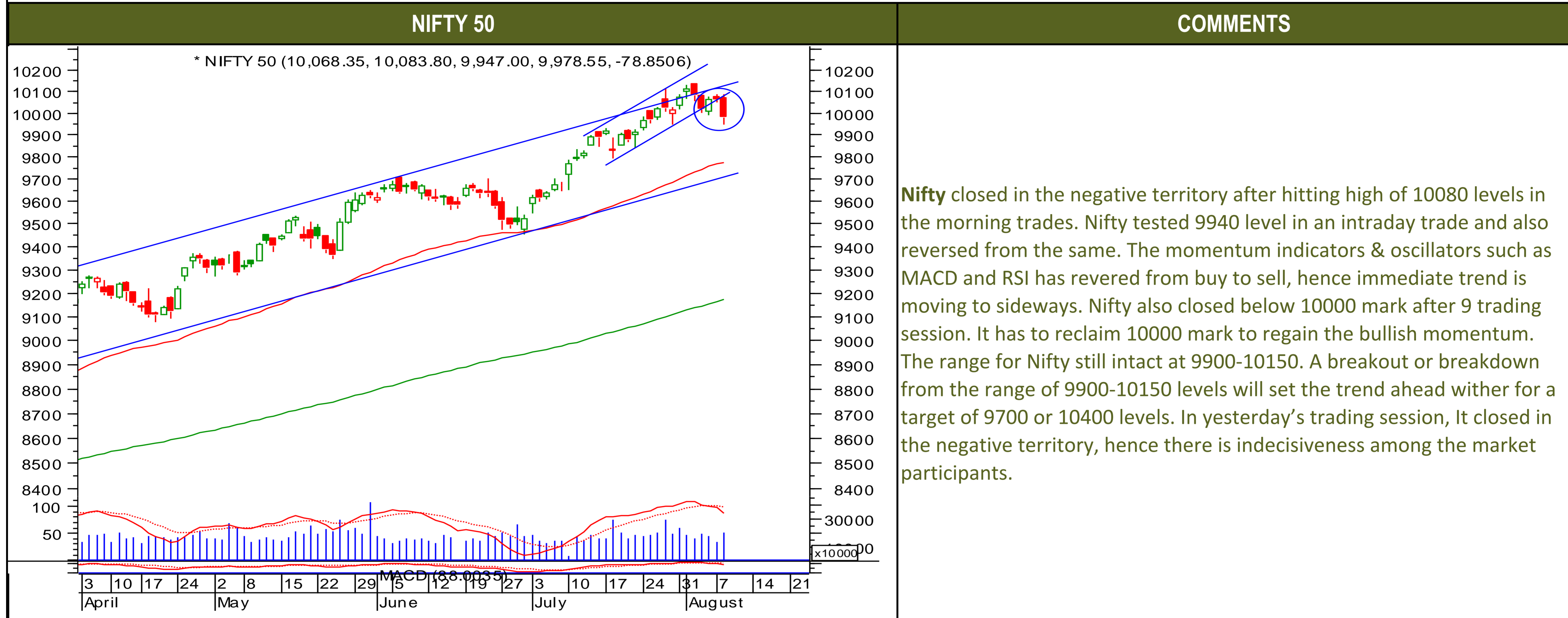




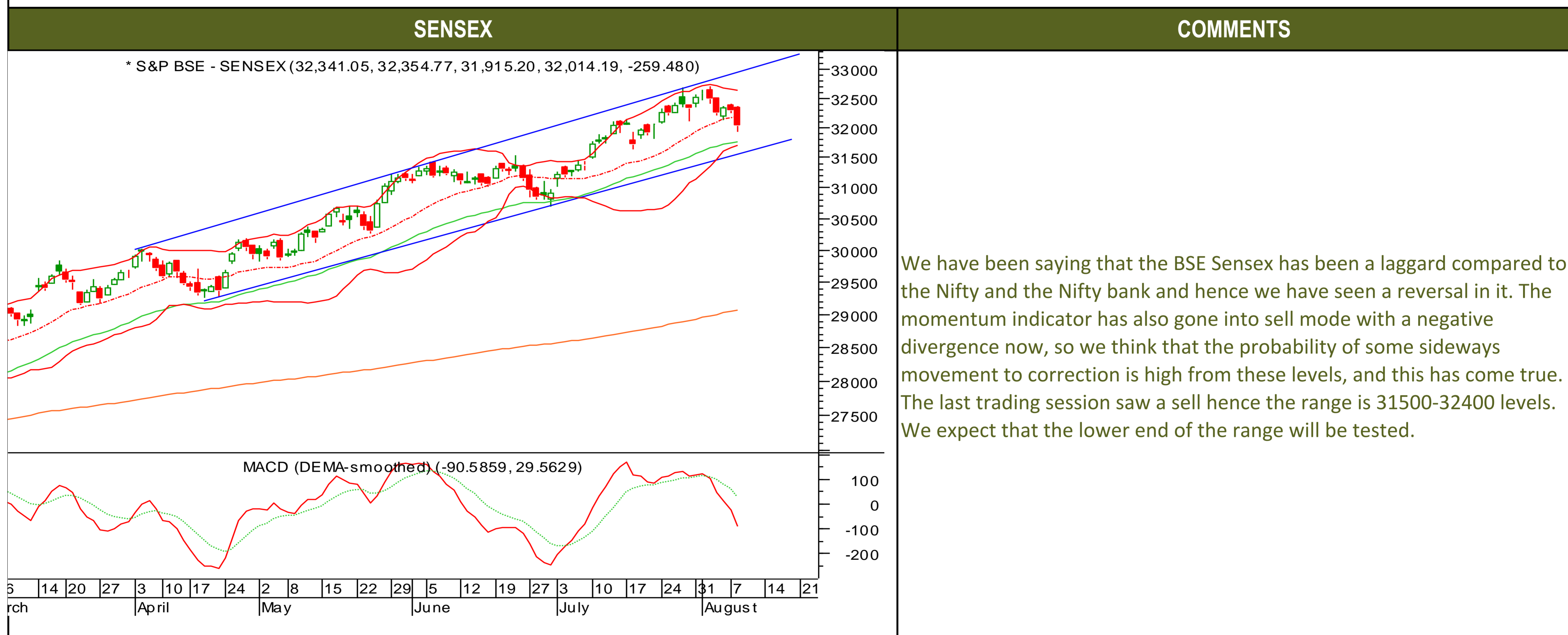
Wednesday, August 9, 2017

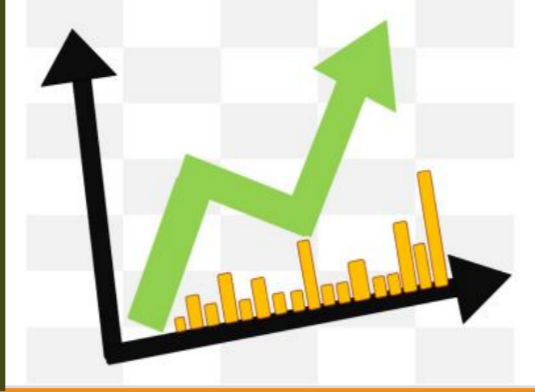
TECHNICALS



Wednesday, August 9, 2017

TECHNICALS





TECHNICALS

BANK NIFTY

COMMENTS

* NIFTY BANK (24,942.20, 24,966.05, 24,534.35, 24,599.50, -306.850)



The Nifty bank closed in the negative territory as anticipated after it retraced 61.8% of the recent fall. Now, the fall on the hourly charts appears to be a five declining structure which is a bearish sign in the short term, hence 25000 which is the short term resistance needs to be taken off in order to fuel further rally. The momentum indicator MACD has gone into sell mode; hence the bears now have an upper hand. So, on the upside 25000 levels are very crucial resistance and till those levels are not taken off the bulls need to be cautious, however on the lower side 24500 is an immediate support, hence a breakdown below those levels will lead to a trend reversal from up to down. Below, 24500 levels the next support come at 24200 levels. On the hourly charts the Index has formed a bearish head and shoulders pattern and the targets for the same comes to 24300-24200 levels.



Wednesday, August 9, 2017

INDIAN INDICES

INDICES	CLOSE	CHANGE	% CHG
SENSEX	32014	-259.48	-0.80
NIFTY	9979	-78.85	-0.78

TURNOVER & MARKET CAP

Rs. (Cr.)	YEST'DAY	PREV.DAY	% CHG
BSE Cash	3895	3836	1.56
NSE Cash	28323	24375	16.20
Derivatives(bn)	2981	4479	-33.44

INSTITUTIONAL ACTIVITIES

DII Equity	308	1017	-69.70
FII Equity	-199	-854	-76.67
FII F&O	-933	673	-238.65

ADVANCES & DECLINES

EXCHANGE	ADV	DECLINES	TOTAL
BSE	574	1036	1610
NSE	356	1335	1691

INDIAN ADR's

ADR	CLOSE	PREV.CLOSE	% CHG
Infosys	15.67	15.54	-0.83
HDFC Bank	97.41	97.37	-0.04
Wipro	6.22	6.11	-1.77
ICICI Bank	9.24	9.31	0.76
Sterlite Inds.	23.10	22.60	-2.16
Dr. Reddy's Lab	34.57	34.23	-0.98

SECTORAL INDICES

BSE			NSE		
INDICES	CLOSE	%	INDICES	CLOSE	%
CNX Bank	24600	-1.23	BSE MIDcap	15413	-1.20
CNX IT	10624	-0.52	BSE SmallCap	15900	-1.30
CNX Reality	272	-4.40	BSE 200	4354	-0.89
CNX FMCG	25306	-1.18	OTHER IMP.DATA		
CNX Infra	3373	-1.20	10 Yr Gsec yield	6.46	
CNX Pharma	9126	-1.12	RS/\$	63.71	
BSE Auto	24740	-0.39	\$ Index	93.32	
BSE Metal	12957	1.63	Brent Crude (\$)	52.61	
CNX MNC	13111	-0.04	Gold (\$)	1261.51	
BSE 500	13798	-0.95	Silver (\$)	16.29	
Nifty Midcap	4754	-0.04	PE	CURRENT AVG	
BSE 100	10370	-0.89	NIFTY	23.6	19.7

TOP OUTPERFORMERS

SENSEX			NIFTY	
SYMBOL	CLOSE	%	SYMBOL	CLOSE
SESA Goa	298.0	3.56	HINDALCO	234.9
Hindalco	235.1	3.25	TATA STEEL	616.5
Tata Steel	615.8	2.63	CIPLA	578.6
Cipla/India	578.3	2.63	GAIL	386.8
Bajaj Auto	2913.8	0.82	BAJAJ AUTO	2911.6

TOP UNDERPERFORMERS

SENSEX			NIFTY	
SYMBOL	CLOSE	%	SYMBOL	CLOSE
JP Asso.	26.2	-9.83	DR REDDYS	2095.7
DLF	178.5	-6.76	BHEL	134.7
BHEL	134.8	-2.95	IDFC	56.9
Coal India	244.6	-2.67	COAL INDIA	245.1
Jindal Steel	139.7	-2.55	SBI	303.7

BSE 500

TOP OUTPERFORMERS			TOP UNDERPERFORMERS	
SYMBOL	CLOSE	%	SYMBOL	CLOSE
PC Jeweller Ltd	291.2	7.46	Housing Development & Infrastructure Ltd	56.4
Dilip Buildcon Ltd	577.7	7.38	JBF Industries Ltd	175.7
Jubilant Foodworks Ltd	1333.3	5.40	Sintex Industries Ltd	31.8
Century Textiles & Industries Ltd	1282.9	4.83	Unitech Ltd	8.1
Edelweiss Financial Services Ltd	237.7	3.62	DLF Ltd	178.5
Vedanta Ltd	298.0	3.56	DCM Shriram Ltd	375.3
Hindalco Industries Ltd	235.1	3.25	Hindustan Construction Co Ltd	37.0
Hexaware Technologies Ltd	260.9	2.96	CG Power and Industrial Solutions Ltd	77.7
Zensar Technologies Ltd	818.5	2.89	Kaveri Seed Co Ltd	659.0
Hindustan Copper Ltd	63.7	2.83	DCB Bank Ltd	185.5
JSW Energy Ltd	70.9	2.75	Balrampur Chini Mills Ltd	170.0
Future Retail Ltd	442.4	2.70	Triveni Turbine Ltd	132.7
VA Tech Wabag Ltd	643.3	2.63	Himachal Futuristic Communications Ltd	17.4
Tata Steel Ltd	615.8	2.63	Dr Reddy's Laboratories Ltd	2101.7
Phoenix Mills Ltd/The	510.8	2.62	Videocon Industries Ltd	21.5
Gujarat Gas Ltd	773.0	2.34	Uflex Ltd	403.5
Tamil Nadu Newsprint & Papers Ltd	362.5	2.33	Swan Energy Ltd	125.1
Cipla Ltd/India	578.3	2.32	Hindustan Petroleum Corp Ltd	436.4
Relaxo Footwears Ltd	497.3	2.28	Indiabulls Real Estate Ltd	253.5
Indraprastha Gas Ltd	1223.9	2.23	Punj Lloyd Ltd	20.5
Bharat Forge Ltd	1187.5	2.17	GMR Infrastructure Ltd	17.7
Mahanagar Gas Ltd	1062.2	2.13	Indian Oil Corp Ltd	412.2
Astral Polytechnic Ltd	652.4	1.71	Polaris Consulting & Services Ltd/India	230.0
Minda Industries Ltd	773.2	1.60	Bharat Petroleum Corp Ltd	504.5
EIH Ltd	132.7	1.49	Delta Corp Ltd	168.0



TRENDER+ OF NIFTY 50 STOCKS

SCRIP NAME	CLOSE	R 1	R 2	S 1	S 2	TRENDER+	PIVOT TABLE				
								NIFTY	SENSEX	BANK NIFTY	CNX IT
ACC Ltd	1812	1836	1859	1791	1769	UP					
Adani Ports & Special Economi	415	419	423	410	406	UP					
Ambuja Cements Ltd	274	279	283	271	269	UP					
Asian Paints Ltd	1147	1153	1158	1140	1134	Down	HIGH	10084	32355	24966	10708
Aurobindo Pharma Ltd	726	738	749	718	710	Down	LOW	9947	31915	24534	10582
Axis Bank Ltd	499	508	517	493	487	UP	CLOSE	9979	32014	24600	10624
Bajaj Auto Ltd	2912	2970	3028	2865	2818	UP	PIVOT	10003	32095	24700	10638
Bank of Baroda	157	160	163	155	153	Down	R 1	10059	32274	24866	10694
Bharat Petroleum Corp Ltd	505	521	538	496	486	Down	R 2	10140	32534	25132	10764
Bharti Airtel Ltd	418	424	430	413	408	Down	S 1	9922	31835	24434	10568
Bharti Infratel Ltd	384	389	394	379	375	Down	S 2	9866	31655	24268	10512
Bosch Ltd	24179	24451	24723	23936	23692	Down					
Cipla Ltd/India	579	585	592	566	554	UP					
Coal India Ltd	245	250	254	242	239	Down					
Dr Reddy's Laboratories Ltd	2096	2173	2251	2051	2007	Down					
Eicher Motors Ltd	32121	32556	32992	31579	31036	UP					
GAIL India Ltd	387	390	394	382	378	UP					
Grasim Industries Ltd	1109	1126	1143	1098	1088	Down					
HCL Technologies Ltd	882	886	890	877	872	Down					
HDFC Bank Ltd	1778	1795	1812	1764	1749	UP					
Hero MotoCorp Ltd	3913	3979	4045	3872	3830	UP					
Hindalco Industries Ltd	235	242	250	230	225	UP					
Hindustan Unilever Ltd	1191	1206	1222	1178	1166	UP					
Housing Development Finance	1720	1734	1749	1703	1687	Down					
ICICI Bank Ltd	296	300	305	292	289	Down					
Indiabulls Housing Finance Ltd	1196	1211	1227	1175	1155	Down					
Indian Oil Corp Ltd	413	427	440	404	395	UP					
IndusInd Bank Ltd	1639	1656	1673	1627	1615	Down					
Infosys Ltd	964	971	978	956	948	Down					
ITC Ltd	274	279	284	271	268	UP					
Kotak Mahindra Bank Ltd	988	998	1009	979	969	Down					
Larsen & Toubro Ltd	1171	1183	1196	1161	1152	Down					
Lupin Ltd	975	988	1001	966	957	Down					
Mahindra & Mahindra Ltd	1400	1414	1429	1388	1376	UP					
Maruti Suzuki India Ltd	7756	7848	7941	7700	7645	Down					
NTPC Ltd	171	173	176	169	167	Down					
Oil & Natural Gas Corp Ltd	164	166	168	162	160	Down					
Power Grid Corp of India Ltd	223	226	229	221	219	Down					
Reliance Industries Ltd	1603	1620	1638	1586	1569	Down					
State Bank of India	304	310	316	299	295	UP					
Sun Pharmaceutical Industries	500	507	513	496	491	UP					
Tata Consultancy Services Ltd	2503	2522	2542	2490	2477	UP					
Tata Motors Ltd	248	252	255	246	243	Down					
Tata Motors Ltd	430	435	440	426	421	Down					
Tata Power Co Ltd/The	78	80	81	77	77	Down					
Tata Steel Ltd	616	626	635	606	596	UP					
Tech Mahindra Ltd	398	406	414	393	389	Down					
UltraTech Cement Ltd	4057	4087	4117	4026	3995	Down					
Wipro Ltd	287	291	295	284	281	Down					
Yes Bank Ltd	1764	1792	1821	1744	1725	Down					
Zee Entertainment Enterprises	540	544	548	535	530	UP					



HOW TO TRADE USING THE TRENDER+

CLOSING PRICES

Closing price is the price at which scrip closes on the date mentioned in the report. Traders may initiate their intraday trade on this level. The stock or index should sustain above or below the pivot else you should exit the trade.

TREND

Trend is the level at which the tendency of stocks can be identified. For best results, you can use the 'trender' to trade. A 'weak' trend denoted by "DOWN" means that traders can trade with a negative bias. If the trend is 'strong', denoted by "UP", one can trade with a positive bias on the long side. Base price should be the pivot point price.

IF THE TREND IS UP

Ideally, for a buy position, buy at the pivot point and use S1 as the stop loss for a target of levels around R2 and higher.

IF THE TREND IS DOWN

Ideally, for a sell position, sell at the pivot point and use R1 as a stop loss and S2 or lower levels as a target level.

TRENDER + : This is a broad based technical trend of the stock prevalent, may or may not be necessarily for the day.

DAILY PROJECTED RANGE : Projected Daily high and low are indicative range for the day, if the price moves out of the range the trend in that side may accelerate and turn bullish or bearish.

THE TREND AND THE DAILY PROJECTED RANGE IS BASED ON CERTAIN SIMPLE CALCULATIONS WHICH IS PROVIDED BY BLOOMBERG, EXCLUSIVELY USED BY ANAND RATHI

Disclaimer-This report has been issued by Anand Rathi Share and Stock Brokers Limited (ARSSBL), which is regulated by SEBI. The information herein was obtained from various sources; we do not guarantee its accuracy or completeness. Neither the information nor any opinion expressed constitutes an offer, or an invitation to make an offer, to buy or sell any securities or any options, futures or other derivatives related to such securities ("related investments"). ARSSBL and its affiliates may trade for their own accounts as market maker / jobber and/or arbitrageur in any securities of this issuer(s) or in related investments, and may be on the opposite side of public orders. ARSSBL, its affiliates, directors, officers, and employees may have a long or short position in any securities of this issuer(s) or in related investments. ARSSBL or its affiliates may from time to time perform investment banking or other services for, or solicit investment banking or other business from, any entity mentioned in this report. This research report is prepared for private circulation. It does not have regard to the specific investment objectives, financial situation and the particular needs of any specific person who may receive this report. Investors should seek financial advice regarding the appropriateness of investing in any securities or investment strategies discussed or recommended in this report and should understand that statements regarding future prospects may not be realized. Investors should note that income from such securities, if any, may fluctuate and that each security's price or value may rise or fall. Past performance is not necessarily a guide to future performance. Foreign currency rates of exchange may adversely affect the value, price or income of any security or related investment mentioned in this report.

ANAND RATHI SHARE AND STOCK BROKERS LIMITED

4 th Floor , Silver Metropolis, Jaicoach Compound Opposite Bimbisar Nagar, Goregaon(East), Mumbai - 400063.

Tel No: +91 22 4001 3700 | Fax No: +91 22 4001 3770 | Website: www.rathi.com