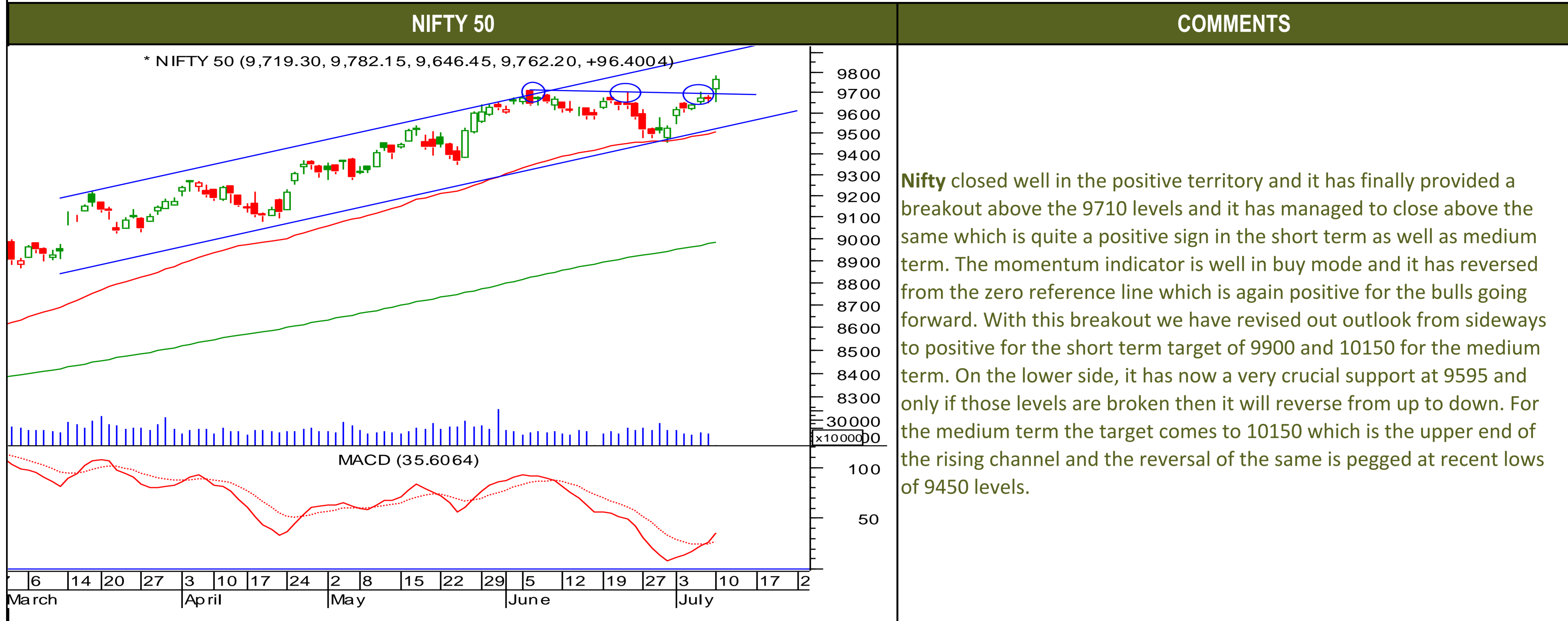




TECHNICALS



TECHNICALS





TECHNICALS

BANK NIFTY	COMMENTS
<p>* NIFTY BANK (23,583.25, 23,964.80, 23,289.90, 23,675.05, +225.900)</p> <p>MACD (DEMA-smoothed) (-140.557, -193.130)</p> <p>8 15 22 29 5 12 19 27 3 10 17 24 y June July</p>	<p>The Nifty bank too closed well in the positive territory and the momentum indicator is well in buy mode from the zero reference line. Now, on the lower side, 23300 is a very crucial support and till those levels are not broken the overall trend remains positive for the target of 24000 initially and thereafter 24200 levels. Below 23300 the next support comes to 23100 levels. The Nifty and Sensex were expected to outperform the Nifty bank and it happened as anticipated.</p>



Tuesday, July 11, 2017

INDIAN INDICES

INDICES	CLOSE	CHANGE	% CHG
SENSEX	31716	355.01	1.13
NIFTY	9771	105.25	1.09

TURNOVER & MARKET CAP

Rs. (Cr.)	YEST'DAY	PREV.DAY	% CHG
BSE Cash	3358	3873	-13.31
NSE Cash	5975	24161	-75.27
Derivatives(bn)	2557	8914	-71.31

INSTITUTIONAL ACTIVITIES

DII Equity	720	316	127.91
FII Equity	-522	-15	3314.52
FII F&O	-11	1965	-100.55

ADVANCES & DECLINES

EXCHANGE	ADV	DECLINES	TOTAL
BSE	1548	1282	2830
NSE	884	604	1488

INDIAN ADR's

ADR	CLOSE	PREV.CLOSE	% CHG
Infosys	14.94	15.04	0.67
HDFC Bank	87.25	87.99	0.85
Wipro	5.18	5.16	-0.39
ICICI Bank	8.97	8.95	-0.22
Sterlite Inds.	23.45	23.65	0.85
Dr. Reddy's Lab	41.01	41.64	1.54

SECTORAL INDICES

BSE			NSE		
INDICES	CLOSE	%	INDICES	CLOSE	%
CNX Bank	23675	0.96	BSE MIDcap	15042	0.67
CNX IT	10360	2.70	BSE SmallCap	15899	0.43
CNX Reality	282	0.73	BSE 200	4260	0.99
CNX FMCG	27475	0.03	OTHER IMP. DATA		
CNX Infra	3298	1.77	10 Yr Gsec yield	6.49	
CNX Pharma	9884	1.65	RS/\$	64.54	
BSE Auto	23960	0.59	\$ Index	96.17	
BSE Metal	11930	1.43	Brent Crude (\$)	46.31	
CNX MNC	12422	0.40	Gold (\$)	1207.69	
BSE 500	13536	0.94	Silver (\$)	15.28	
Nifty Midcap	4664	0.40	PE	CURRENT AVG	
BSE 100	10127	1.09	NIFTY	23.7	19.7

TOP OUTPERFORMERS

SENSEX			NIFTY	
SYMBOL	CLOSE	%	SYMBOL	CLOSE
Bharti Airtel	405.4	5.39	BHARTI	405.7
TCS	2440.9	4.66	IDEA	87.2
Wipro	268.5	4.64	TCS	2435.0
Coal India	259.2	3.25	WIPRO	268.3
Infosys	959.1	2.46	BANK OF BARODA	166.6

TOP UNDERPERFORMERS

SENSEX			NIFTY	
SYMBOL	CLOSE	%	SYMBOL	CLOSE
JP Asso.	21.9	-0.90	IDFC	56.5
M&M	1367.7	-0.54	ITC	333.3
ITC	333.3	-0.25	HINDUSTAN UNILEVER	1096.3
HUL	1096.8	-0.09	MARUTI	7430.5
Maruti	7434.7	0.07	BPCL	664.7

BSE 500

TOP OUTPERFORMERS			TOP UNDERPERFORMERS	
SYMBOL	CLOSE	%	SYMBOL	CLOSE
Rollta India Ltd	61.1	14.54	Mahindra Holidays & Resorts India Ltd	427.8
Divi's Laboratories Ltd	734.2	7.94	Religare Enterprises Ltd	127.9
Reliance Communications Ltd	24.4	7.25	IDFC Ltd	56.5
Punjab National Bank	153.3	6.31	Biocon Ltd	321.3
Tata Global Beverages Ltd	166.5	5.65	Gateway Distriparks Ltd	273.6
Bank of India	149.2	5.55	Shree Renuka Sugars Ltd	15.1
Oriental Bank of Commerce	150.3	5.44	JB Chemicals & Pharmaceuticals Ltd	312.2
Bharti Airtel Ltd	405.4	5.39	Shriram Transport Finance Co Ltd	1054.4
Videocon Industries Ltd	27.7	4.93	Bajaj Hindusthan Sugar Ltd	15.9
Idea Cellular Ltd	87.5	4.86	Triveni Turbine Ltd	146.8
Adani Power Ltd	29.8	4.75	Jai Corp Ltd	83.9
Tata Consultancy Services Ltd	2440.9	4.66	Prestige Estates Projects Ltd	276.2
Wipro Ltd	268.5	4.64	Caplin Point Laboratories Ltd	677.2
Canara Bank	361.4	4.57	Yamini Investment Ltd	21.1
Welspun India Ltd	88.0	4.52	Mindtree Ltd	530.0
Balmer Lawrie & Co Ltd	242.7	3.99	Whirlpool of India Ltd	1152.0
Allahabad Bank	72.4	3.95	Grindwell Norton Ltd	412.8
Tube Investments of India Ltd	775.1	3.91	VIP Industries Ltd	189.5
Bank of Baroda	166.8	3.83	Eveready Industries India Ltd	347.5
Union Bank of India	156.7	3.81	Monsanto India Ltd	2777.7
Rural Electrification Corp Ltd	187.0	3.69	Hindustan Media Ventures Ltd	276.1
Marksans Pharma Ltd	44.4	3.62	Himatsingka Seide Ltd	359.1
Indiabulls Real Estate Ltd	211.6	3.57	Piramal Enterprises Ltd	2905.7
Just Dial Ltd	376.0	3.33	GMR Infrastructure Ltd	19.0
Andhra Bank	57.6	3.32	Shipping Corp of India Ltd	85.4



TRENDER+ OF NIFTY 50 STOCKS

SCRIP NAME	CLOSE	R 1	R 2	S 1	S 2	TRENDER+	PIVOT TABLE					
ACC Ltd	1628	1636	1643	1620	1612	UP						
Adani Ports & Special Economi	375	377	379	373	370	UP						
Ambuja Cements Ltd	254	263	271	238	222	UP						
Asian Paints Ltd	1128	1154	1180	1109	1090	Flat	HIGH	NIFTY	SENSEX	BANK NIFTY	CNX IT	
Aurobindo Pharma Ltd	709	714	719	702	695	UP	LOW	9782	31768	23965		10377
Axis Bank Ltd	510	513	516	507	503	UP	CLOSE	9646	31471	23290		9946
Bajaj Auto Ltd	2731	2742	2754	2716	2701	Down	PIVOT	9771	31716	23675		10360
Bank of Baroda	167	168	170	165	163	UP	R 1	9733	31652	23643		10228
Bharat Petroleum Corp Ltd	665	670	675	661	657	UP	R 2	9820	31832	23997		10509
Bharti Airtel Ltd	406	414	422	394	382	UP	S 1	9869	31949	24318		10659
Bharti Infratel Ltd	410	413	417	406	401	UP	S 2	9684	31535	23322		10079
Bosch Ltd	23890	24093	24295	23594	23297	Flat		9598	31355	22968		9797
Cipla Ltd/India	549	557	566	544	538	UP						
Coal India Ltd	259	261	263	255	251	UP						
Dr Reddy's Laboratories Ltd	2726	2744	2762	2710	2693	UP						
Eicher Motors Ltd	27931	28189	28447	27684	27437	Flat						
GAIL India Ltd	366	386	406	353	340	UP						
Grasim Industries Ltd	1255	1265	1275	1244	1233	Down						
HCL Technologies Ltd	850	856	863	841	831	UP						
HDFC Bank Ltd	1676	1729	1782	1642	1608	UP						
Hero MotoCorp Ltd	3731	3750	3768	3703	3675	Flat						
Hindalco Industries Ltd	196	197	199	194	192	UP						
Hindustan Unilever Ltd	1096	1104	1112	1089	1082	Flat						
Housing Development Finance	1639	1648	1657	1625	1612	Flat						
ICICI Bank Ltd	291	293	295	290	288	UP						
Indiabulls Housing Finance Ltd	1069	1076	1082	1063	1057	Flat						
Indian Oil Corp Ltd	383	389	395	379	374	Flat						
IndusInd Bank Ltd	1560	1575	1589	1536	1512	UP						
Infosys Ltd	957	965	972	945	932	UP						
ITC Ltd	333	335	337	331	329	UP						
Kotak Mahindra Bank Ltd	968	974	980	961	954	Flat						
Larsen & Toubro Ltd	1732	1743	1755	1716	1701	UP						
Lupin Ltd	1149	1168	1186	1133	1116	UP						
Mahindra & Mahindra Ltd	1367	1378	1388	1358	1348	UP						
Maruti Suzuki India Ltd	7430	7720	8010	6920	6410	UP						
NTPC Ltd	160	161	163	158	157	UP						
Oil & Natural Gas Corp Ltd	162	163	164	161	160	Flat						
Power Grid Corp of India Ltd	211	212	213	210	209	UP						
Reliance Industries Ltd	1493	1499	1506	1488	1482	UP						
State Bank of India	286	287	289	284	281	UP						
Sun Pharmaceutical Industries	564	570	576	558	552	UP						
Tata Consultancy Services Ltd	2435	2460	2486	2394	2354	UP						
Tata Motors Ltd	268	269	271	267	267	Flat						
Tata Motors Ltd	447	449	450	445	442	UP						
Tata Power Co Ltd/The	83	84	84	83	82	UP						
Tata Steel Ltd	559	564	569	552	544	UP						
Tech Mahindra Ltd	384	387	389	382	379	Flat						
UltraTech Cement Ltd	4135	4167	4198	4102	4068	UP						
Wipro Ltd	268	271	275	263	257	UP						
Yes Bank Ltd	1513	1523	1533	1502	1491	UP						
Zee Entertainment Enterprises	506	528	550	471	436	UP						



HOW TO TRADE USING THE TRENDER+

CLOSING PRICES

Closing price is the price at which scrip closes on the date mentioned in the report. Traders may initiate their intraday trade on this level. The stock or index should sustain above or below the pivot else you should exit the trade.

TREND

Trend is the level at which the tendency of stocks can be identified. For best results, you can use the 'trender' to trade. A 'weak' trend denoted by "DOWN" means that traders can trade with a negative bias. If the trend is 'strong', denoted by "UP", one can trade with a positive bias on the long side. Base price should be the pivot point price.

IF THE TREND IS UP

Ideally, for a buy position, buy at the pivot point and use S1 as the stop loss for a target of levels around R2 and higher.

IF THE TREND IS DOWN

Ideally, for a sell position, sell at the pivot point and use R1 as a stop loss and S2 or lower levels as a target level.

TRENDER + : This is a broad based technical trend of the stock prevalent, may or may not be necessarily for the day.

DAILY PROJECTED RANGE : Projected Daily high and low are indicative range for the day, if the price moves out of the range the trend in that side may accelerate and turn bullish or bearish.

THE TREND AND THE DAILY PROJECTED RANGE IS BASED ON CERTAIN SIMPLE CALCULATIONS WHICH IS PROVIDED BY BLOOMBERG, EXCLUSIVELY USED BY ANAND RATHI

Disclaimer-This report has been issued by Anand Rathi Share and Stock Brokers Limited (ARSSBL), which is regulated by SEBI. The information herein was obtained from various sources; we do not guarantee its accuracy or completeness. Neither the information nor any opinion expressed constitutes an offer, or an invitation to make an offer, to buy or sell any securities or any options, futures or other derivatives related to such securities ("related investments"). ARSSBL and its affiliates may trade for their own accounts as market maker / jobber and/or arbitrageur in any securities of this issuer(s) or in related investments, and may be on the opposite side of public orders. ARSSBL, its affiliates, directors, officers, and employees may have a long or short position in any securities of this issuer(s) or in related investments. ARSSBL or its affiliates may from time to time perform investment banking or other services for, or solicit investment banking or other business from, any entity mentioned in this report. This research report is prepared for private circulation. It does not have regard to the specific investment objectives, financial situation and the particular needs of any specific person who may receive this report. Investors should seek financial advice regarding the appropriateness of investing in any securities or investment strategies discussed or recommended in this report and should understand that statements regarding future prospects may not be realized. Investors should note that income from such securities, if any, may fluctuate and that each security's price or value may rise or fall. Past performance is not necessarily a guide to future performance. Foreign currency rates of exchange may adversely affect the value, price or income of any security or related investment mentioned in this report.

ANAND RATHI SHARE AND STOCK BROKERS LIMITED

4 th Floor , Silver Metropolis, Jaicoach Compound Opposite Bimbisar Nagar, Goregaon(East), Mumbai - 400063.

Tel No: +91 22 4001 3700 | Fax No: +91 22 4001 3770 | Website: www.rathi.com