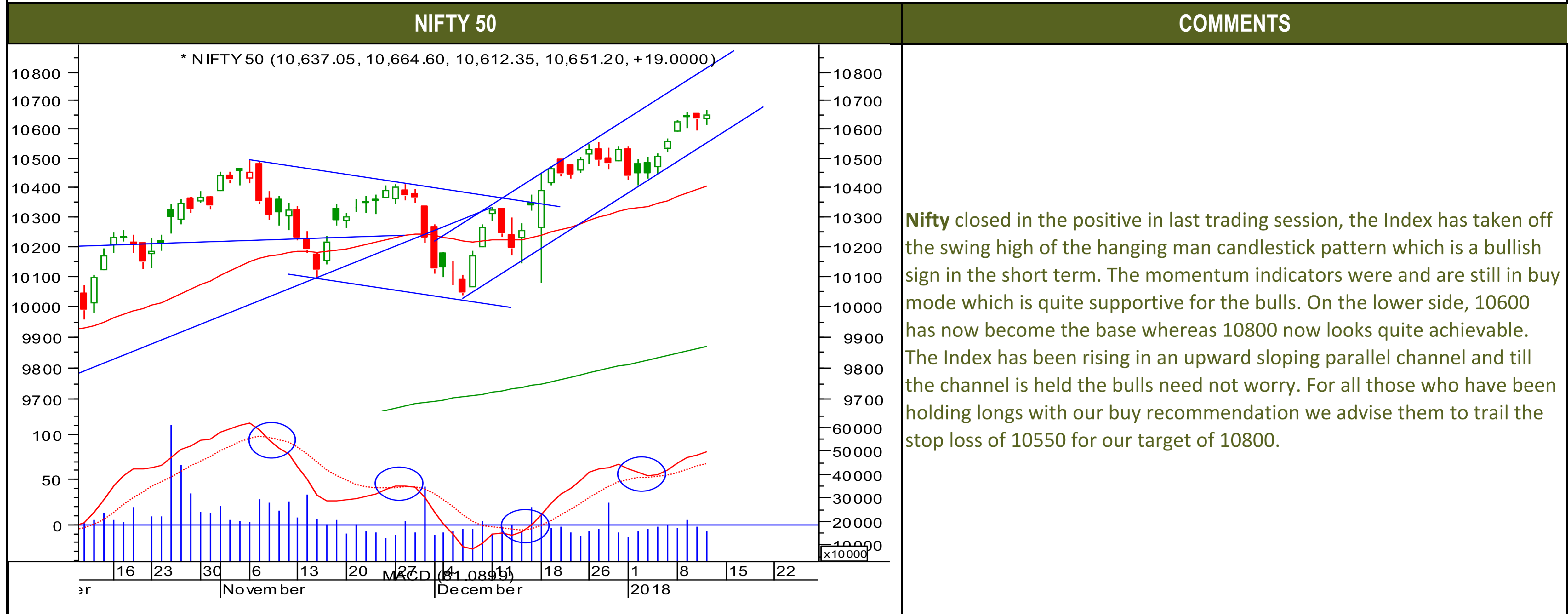




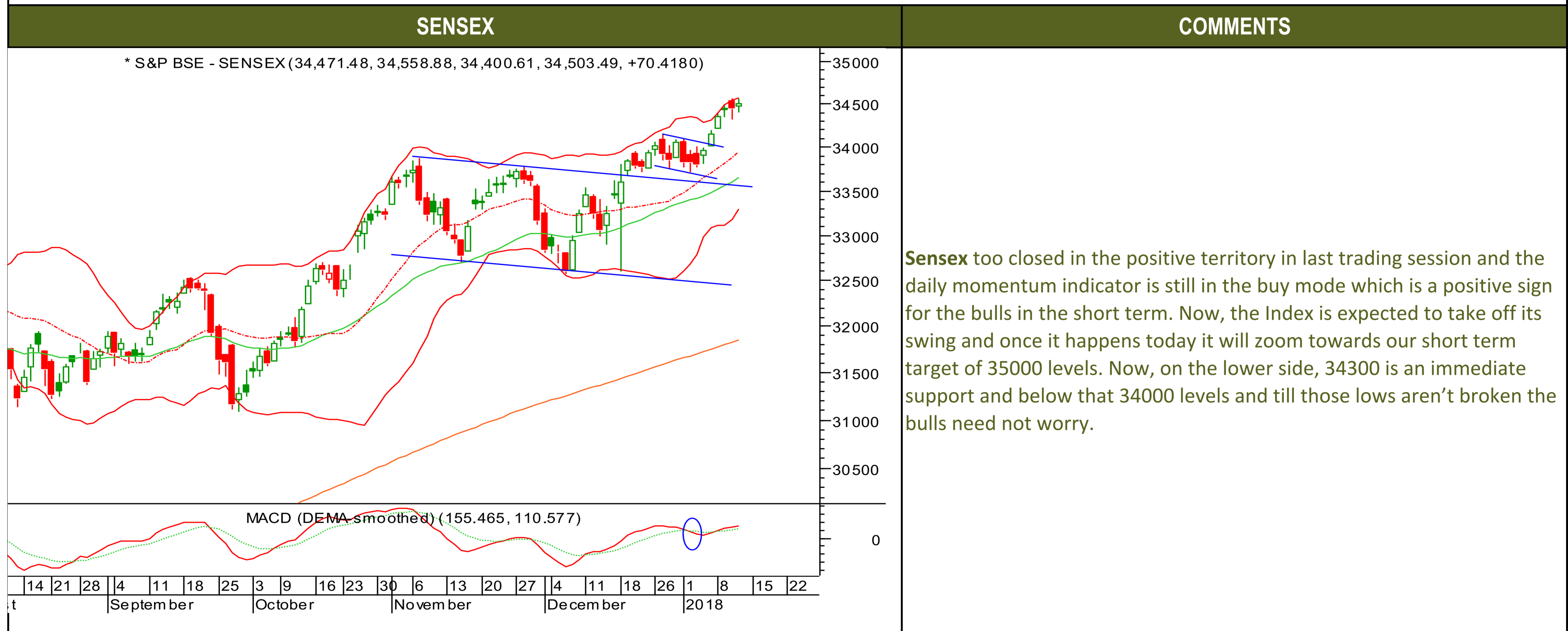
Friday, January 12, 2018

TECHNICALS



Friday, January 12, 2018

TECHNICALS

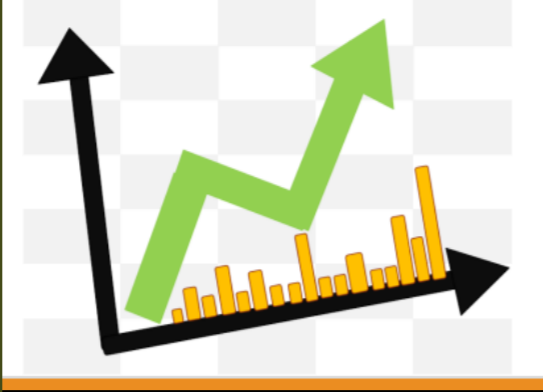




Friday, January 12, 2018

TECHNICALS

BANK NIFTY	COMMENTS
<p>* NIFTY BANK (25,628.20, 25,694.65, 25,532.25, 25,660.90, +43.5996)</p> <p>MACD (DEMA-smoothed) (17.9004, -14.9891)</p>	<p>The Nifty bank closed in positive territory in last trading however it was unable to surpass the swing high of 25800 levels which if it does in today's trading session it will zoom towards 26000 immediately. So, we recommend buying Banknifty above 25800 for the target of 26000 with a stop loss of 25700 levels. The momentum indicators are quite supportive for the bulls. Hence if the Index takes off 25800 levels then it will be a price momentum breakout. The Banknifty too has been moving higher in an upward sloping parallel channel and the upper end of the channel comes to 26700 which is also the flag pattern target. On the lower side, 25200 is quite an important support, hence till those levels are not broken the bulls need not worry and it seems that now the banking guys will join the party.</p>



Friday, January 12, 2018

INDIAN INDICES

INDICES	CLOSE	CHANGE	% CHG
SENSEX	34503	70.42	0.20
NIFTY	10651	19.00	0.18

TURNOVER & MARKET CAP

Rs. (Cr.)	YEST'DAY	PREV.DAY	% CHG
BSE Cash	5026	5458	-7.91
NSE Cash	35260	36399	-3.13
Derivatives(bn)	5961	4679	27.39

INSTITUTIONAL ACTIVITIES

DII Equity	600	523	14.79
FII Equity	-572	-304	88.28
FII F&O	168	373	-54.85

ADVANCES & DECLINES

EXCHANGE	ADV	DECLINES	TOTAL
BSE	1609	1629	3238
NSE	972	798	1770

INDIAN ADR's

ADR	CLOSE	PREV.CLOSE	% CHG
Infosys	16.74	16.99	1.49
HDFC Bank	101.97	101.02	-0.93
Wipro	5.70	5.81	1.93
ICICI Bank	9.82	9.71	-1.12
Sterlite Inds.	25.25	25.60	1.39
Dr. Reddy's Lab	38.23	37.95	-0.73

SECTORAL INDICES

BSE			NSE		
INDICES	CLOSE	%	INDICES	CLOSE	%
CNX Bank	25661	0.17	BSE MIDcap	18168	0.27
CNX IT	12103	0.40	BSE SmallCap	19984	0.41
CNX Reality	372	2.00	BSE 200	4749	0.19
CNX FMCG	27308	0.36	OTHER IMP.DATA		
CNX Infra	3706	0.00	10 Yr Gsec yield	7.27	
CNX Pharma	9773	0.25	RS/\$	63.70	
BSE Auto	26413	0.15	\$ Index	92.42	
BSE Metal	15775	-0.08	Brent Crude (\$)	69.34	
CNX MNC	14781	0.08	Gold (\$)	1318.65	
BSE 500	15267	0.21	Silver (\$)	17.02	
Nifty Midcap	5661	0.08	PE	CURRENT AVG	
BSE 100	11184	0.18	NIFTY	24.8	19.7

TOP OUTPERFORMERS

SENSEX			NIFTY	
SYMBOL	CLOSE	%	SYMBOL	CLOSE
Infosys	1075.6	2.28	IDFC	65.6
Jindal Steel	267.5	1.96	INFY	1075.8
Bharti Airtel	514.8	1.66	TECH MAHINDRA	551.7
Tata power	99.6	1.66	BHARTI	514.8
HUL	1379.0	0.91	KOTAK BANK	1017.7

TOP UNDERPERFORMERS

SENSEX			NIFTY	
SYMBOL	CLOSE	%	SYMBOL	CLOSE
JP Asso.	23.5	-2.29	INDUSIND	1700.3
Wipro	321.1	-1.53	CIPLA	612.4
Cipla/India	612.7	-0.88	POWERGRID	197.9
ICICI Bank	309.5	-0.82	HEROMOTOCORP	3705.7
Hero Motocorp	3706.0	-0.70	BHARTI INFRATEL	367.8

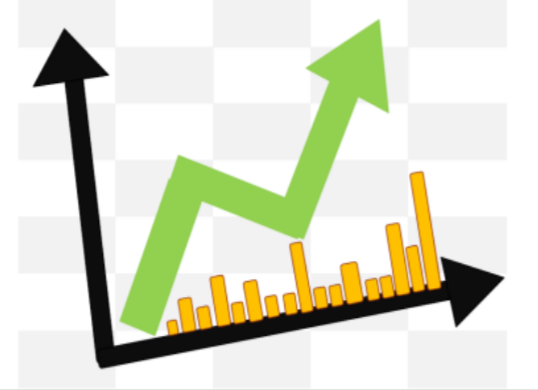
BSE 500

TOP OUTPERFORMERS			TOP UNDERPERFORMERS	
SYMBOL	CLOSE	%	SYMBOL	CLOSE
IDFC Bank Ltd	68.6	8.29	Fortis Healthcare Ltd	149.0
Praj Industries Ltd	128.0	7.30	Yamini Investment Ltd	8.8
Symphony Ltd	2144.6	7.19	Videcon Industries Ltd	24.0
Aban Offshore Ltd	267.9	6.93	Tata Sponge Iron Ltd	1153.7
IFCI Ltd	32.2	5.76	Container Corp Of India Ltd	1427.1
Delta Corp Ltd	317.6	5.55	Alkem Laboratories Ltd	2282.8
Mahindra Lifespace Developers Ltd	488.3	5.53	Punj Lloyd Ltd	27.0
Jai Corp Ltd	214.2	5.49	Sadbhav Engineering Ltd	416.6
Gujarat State Fertilizers & Chemicals Ltd	158.3	5.36	Bombay Burmah Trading Co	1730.6
Capital First Ltd	835.5	5.32	Great Eastern Shipping Co Ltd/The	453.5
OnMobile Global Ltd	63.2	5.16	APL Apollo Tubes Ltd	2183.6
Oberoi Realty Ltd	553.3	5.07	3M India Ltd	18035.3
Marksans Pharma Ltd	48.8	4.84	Jaiprakash Associates Ltd	23.5
IL&FS Transportation Networks Ltd	93.3	4.72	Emami Ltd	1311.0
Sonata Software Ltd	293.2	4.62	GMR Infrastructure Ltd	21.8
Jain Irrigation Systems Ltd	139.5	4.54	PI Industries Ltd	994.6
Granules India Ltd	146.8	4.41	IndusInd Bank Ltd	1698.6
Future Retail Ltd	578.8	4.31	Bharat Financial Inclusion Ltd	1033.2
Jubilant Life Sciences Ltd	809.4	4.29	Tata Investment Corp Ltd	910.3
JSW Energy Ltd	95.3	4.27	Vardhman Textiles Ltd	1393.0
United Breweries Ltd	1179.6	4.24	Jammu & Kashmir Bank Ltd/The	79.3
Texmaco Rail & Engineering Ltd	120.6	4.19	Indian Overseas Bank	23.2
Godrej Industries Ltd	640.9	3.96	FDC Ltd/India	236.6
DEN Networks Ltd	111.1	3.93	JBF Industries Ltd	230.5
Zydus Wellness Ltd	1130.8	3.57	Union Bank of India	139.2



TRENDER+ OF NIFTY 50 STOCKS

SCRIP NAME	CLOSE	R 1	R 2	S 1	S 2	TRENDER+	PIVOT TABLE					
ACC Ltd	1802	1819	1835	1792	1782	UP						
Adani Ports & Special Economic Z	426	430	435	421	416	UP						
Ambuja Cements Ltd	272	277	282	269	266	Down						
Asian Paints Ltd	1189	1196	1203	1176	1163	UP	HIGH	NIFTY	SENSEX	BANK NIFTY	CNX IT	
Aurobindo Pharma Ltd	675	681	688	668	662	Flat	LOW	10665	34559	25695		12179
Axis Bank Ltd	559	563	568	554	549	UP	CLOSE	10612	34401	25532		12045
Bajaj Auto Ltd	3193	3216	3238	3176	3158	Down	PIVOT	10651	34503	25661		12103
Bank of Baroda	163	164	165	162	161	Flat	R 1	10643	34488	25629		12109
Bharat Petroleum Corp Ltd	492	495	498	489	486	Down	R 2	10673	34575	25726		12173
Bharti Airtel Ltd	515	520	525	506	498	Down	S 1	10695	34646	25792		12242
Bharti Infratel Ltd	368	372	376	364	360	Down	S 2	10621	34416	25564		12039
Bosch Ltd	19955	20139	20324	19752	19548	UP		10590	34329	25467		11976
Cipla Ltd/India	612	618	623	608	604	Down						
Coal India Ltd	308	311	314	304	300	UP						
Dr Reddy's Laboratories Ltd	2425	2445	2464	2412	2398	Down						
Eicher Motors Ltd	28445	28706	28968	28002	27559	Down						
GAIL India Ltd	496	498	500	493	491	UP						
Grasim Industries Ltd	1244	1259	1274	1225	1207	UP						
HCL Technologies Ltd	917	925	932	910	902	UP						
HDFC Bank Ltd	1873	1880	1888	1861	1849	UP						
Hero MotoCorp Ltd	3706	3733	3759	3690	3673	Down						
Hindalco Industries Ltd	268	270	273	266	264	UP						
Hindustan Unilever Ltd	1379	1389	1399	1363	1347	UP						
Housing Development Finance Co	1741	1749	1758	1729	1716	UP						
ICICI Bank Ltd	310	312	314	308	306	Down						
Indiabulls Housing Finance Ltd	1229	1246	1263	1206	1184	UP						
Indian Oil Corp Ltd	389	392	394	387	384	Flat						
IndusInd Bank Ltd	1700	1740	1779	1673	1645	Down						
Infosys Ltd	1076	1088	1100	1060	1043	UP						
ITC Ltd	270	271	273	268	267	UP						
Kotak Mahindra Bank Ltd	1018	1025	1033	1005	993	UP						
Larsen & Toubro Ltd	1324	1329	1335	1315	1307	Down						
Lupin Ltd	929	934	939	925	921	UP						
Mahindra & Mahindra Ltd	767	772	777	758	750	UP						
Maruti Suzuki India Ltd	9340	9405	9469	9301	9261	Down						
NTPC Ltd	174	175	176	173	172	Down						
Oil & Natural Gas Corp Ltd	198	199	201	197	196	UP						
Power Grid Corp of India Ltd	198	200	201	197	195	Down						
Reliance Industries Ltd	938	942	946	934	931	UP						
State Bank of India	302	303	305	300	299	UP						
Sun Pharmaceutical Industries Ltd	588	597	607	579	571	UP						
Tata Consultancy Services Ltd	2791	2814	2838	2775	2759	UP						
Tata Motors Ltd	254	256	257	253	252	Down						
Tata Motors Ltd	435	437	440	433	430	UP						
Tata Power Co Ltd/The	100	101	102	98	97	UP						
Tata Steel Ltd	771	776	782	767	763	UP						
Tech Mahindra Ltd	552	557	563	544	537	UP						
UltraTech Cement Ltd	4406	4434	4461	4380	4354	Down						
Wipro Ltd	321	325	329	318	315	UP						
Yes Bank Ltd	343	347	350	338	332	UP						
Zee Entertainment Enterprises Ltd	580	583	586	577	574	UP						



HOW TO TRADE USING THE TRENDER+

CLOSING PRICES

Closing price is the price at which scrip closes on the date mentioned in the report. Traders may initiate their intraday trade on this level. The stock or index should sustain above or below the pivot else you should exit the trade.

TREND

Trend is the level at which the tendency of stocks can be identified. For best results, you can use the 'trender' to trade. A 'weak' trend denoted by "DOWN" means that traders can trade with a negative bias. If the trend is 'strong', denoted by "UP", one can trade with a positive bias on the long side. Base price should be the pivot point price.

IF THE TREND IS UP

Ideally, for a buy position, buy at the pivot point and use S1 as the stop loss for a target of levels around R2 and higher.

IF THE TREND IS DOWN

Ideally, for a sell position, sell at the pivot point and use R1 as a stop loss and S2 or lower levels as a target level.

TRENDER + : This is a broad based technical trend of the stock prevalent, may or may not be necessarily for the day.

DAILY PROJECTED RANGE : Projected Daily high and low are indicative range for the day, if the price moves out of the range the trend in that side may accelerate and turn bullish or bearish.

THE TREND AND THE DAILY PROJECTED RANGE IS BASED ON CERTAIN SIMPLE CALCULATIONS WHICH IS PROVIDED BY BLOOMBERG, EXCLUSIVELY USED BY ANAND RATHI

Disclaimer-This report has been issued by Anand Rathi Share and Stock Brokers Limited (ARSSBL), which is regulated by SEBI. The information herein was obtained from various sources; we do not guarantee its accuracy or completeness. Neither the information nor any opinion expressed constitutes an offer, or an invitation to make an offer, to buy or sell any securities or any options, futures or other derivatives related to such securities ("related investments"). ARSSBL and its affiliates may trade for their own accounts as market maker / jobber and/or arbitrageur in any securities of this issuer(s) or in related investments, and may be on the opposite side of public orders. ARSSBL, its affiliates, directors, officers, and employees may have a long or short position in any securities of this issuer(s) or in related investments. ARSSBL or its affiliates may from time to time perform investment banking or other services for, or solicit investment banking or other business from, any entity mentioned in this report. This research report is prepared for private circulation. It does not have regard to the specific investment objectives, financial situation and the particular needs of any specific person who may receive this report. Investors should seek financial advice regarding the propriateness of investing in any securities or investment strategies discussed or recommended in this report and should understand that statements regarding future prospects may not be realized. Investors should note that income from such securities, if any, may fluctuate and that each security's price or value may rise or fall. Past performance is not necessarily a guide to future performance. Foreign currency rates of exchange may adversely affect the value, price or income of any security or related investment mentioned in this report.

ANAND RATHI SHARE AND STOCK BROKERS LIMITED

4 th Floor , Silver Metropolis, Jaicoach Compound Opposite Bimbisar Nagar, Goregaon(East), Mumbai - 400063.

Tel No: +91 22 4001 3700 | Fax No: +91 22 4001 3770 | Website: www.rathi.com