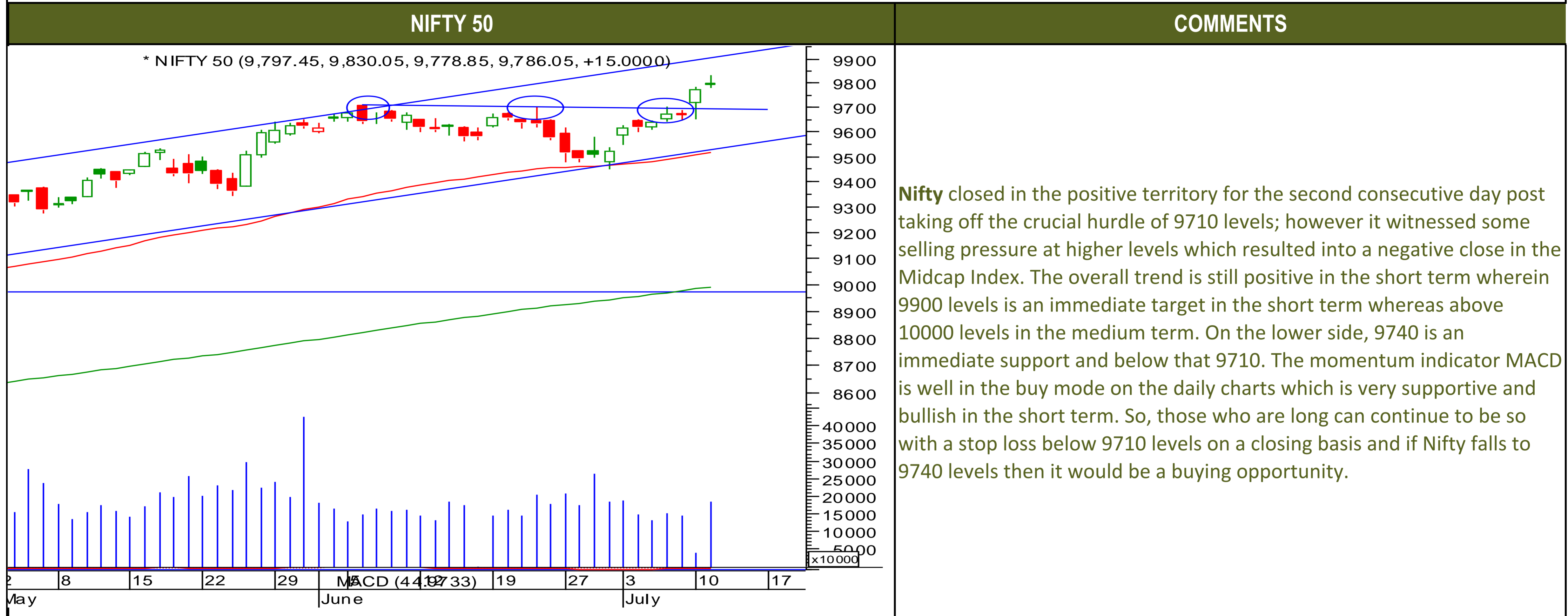




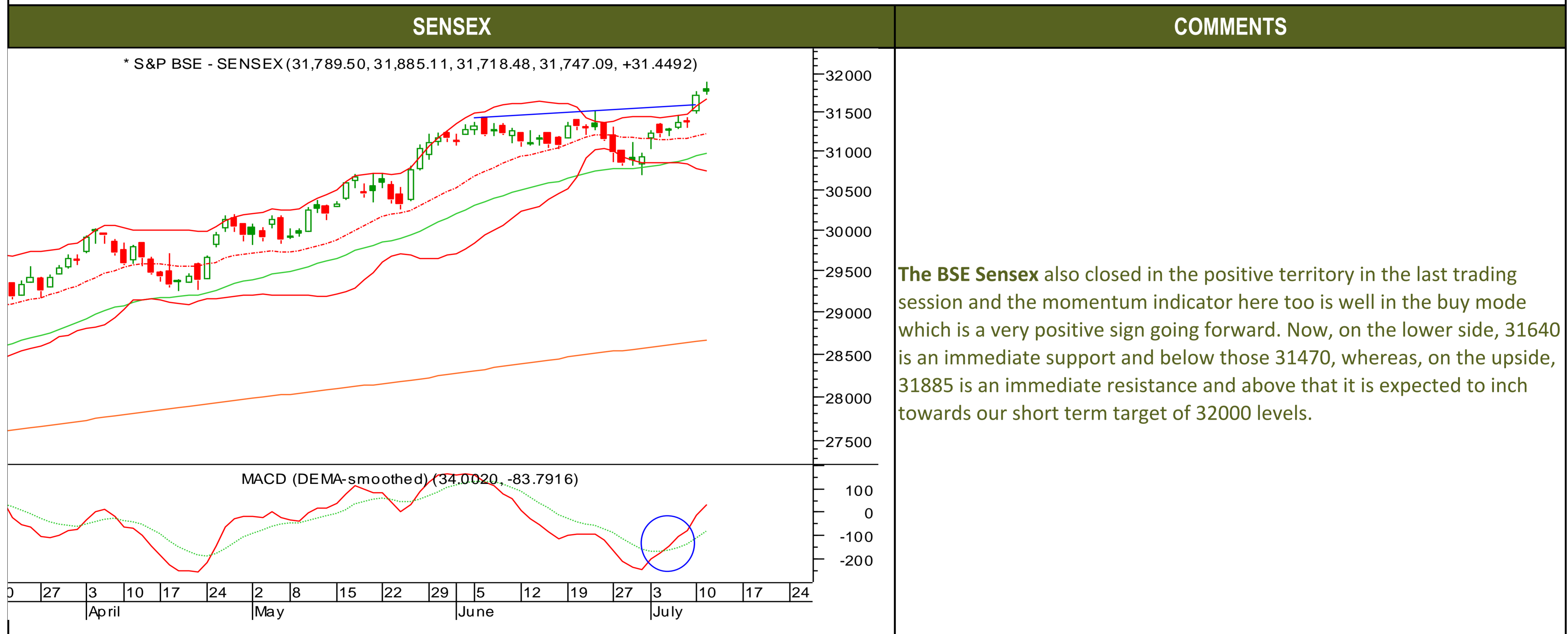
Wednesday, July 12, 2017

TECHNICALS



Wednesday, July 12, 2017

TECHNICALS





TECHNICALS

BANK NIFTY	COMMENTS
<p>* NIFTY BANK (23,744.55, 23,744.55, 23,552.60, 23,584.60, -90.45 12)</p> <p>MACD (DEMA-smoothed) (-116.205, -177.745)</p> <p>8 15 22 29 5 12 19 27 3 10 17 24 June July</p>	<p>The Nifty bank closed in the negative territory post the results of Indusind bank and South Indian bank, however, 23330 is a very good support in the short term and till those levels are held the overall bias remains sideways to positive. Now, tomorrow being an expiry day for the weekly Banknifty, hence we think it witness some selling pressure at higher levels as 24000 levels is acting as a very crucial hurdle in the short term and till those levels aren't taken off the Index as we have anticipated earlier as well will continue to underperform both the Nifty and the Sensex.</p>



Wednesday, July 12, 2017

INDIAN INDICES

INDICES	CLOSE	CHANGE	% CHG
SENSEX	31747	31.45	0.10
NIFTY	9786	15.00	0.15

TURNOVER & MARKET CAP

Rs. (Cr.)	YEST'DAY	PREV.DAY	% CHG
BSE Cash	9919	3358	195.44
NSE Cash	26454	5980	342.38
Derivatives(bn)	3334	2557	30.38

INSTITUTIONAL ACTIVITIES

DII Equity	895	720	24.23
FII Equity	102	-522	-119.59
FII F&O	3751	-11	-34609.11

ADVANCES & DECLINES

EXCHANGE	ADV	DECLINES	TOTAL
BSE	1148	1090	2238
NSE	649	1036	1685

INDIAN ADR's

ADR	CLOSE	PREV.CLOSE	% CHG
Infosys	15.04	15.32	1.86
HDFC Bank	87.99	88.35	0.41
Wipro	5.16	5.29	2.52
ICICI Bank	8.95	8.99	0.45
Sterlite Inds.	23.65	23.35	-1.27
Dr. Reddy's Lab	41.64	41.96	0.77

SECTORAL INDICES

BSE			NSE		
INDICES	CLOSE	%	INDICES	CLOSE	%
CNX Bank	23585	-0.38	BSE MIDcap	14923	-0.79
CNX IT	10430	0.67	BSE SmallCap	15806	-0.58
CNX Reality	277	-1.53	BSE 200	4255	-0.11
CNX FMCG	27362	-0.41	OTHER IMP. DATA		
CNX Infra	3288	-0.31	10 Yr Gsec yield	6.49	
CNX Pharma	9802	-0.84	RS/\$	64.58	
BSE Auto	24152	0.80	\$ Index	96.13	
BSE Metal	11860	-0.58	Brent Crude (\$)	46.51	
CNX MNC	12422	0.00	Gold (\$)	1210.45	
BSE 500	13512	-0.17	Silver (\$)	15.51	
Nifty Midcap	4617	0.00	PE	CURRENT AVG	
BSE 100	10124	-0.04	NIFTY	23.7	19.7

TOP OUTPERFORMERS

SENSEX			NIFTY	
SYMBOL	CLOSE	%	SYMBOL	CLOSE
Jindal Steel	138.5	2.94	HINDALCO	200.7
Bajaj Auto	2793.4	2.34	BAJAJ AUTO	2792.8
Tata Motors	457.0	2.28	TATA MOTORS	457.0
Hindalco	200.2	2.25	BPCL	678.3
NTPC	163.1	1.81	NTPC	163.3

TOP UNDERPERFORMERS

SENSEX			NIFTY	
SYMBOL	CLOSE	%	SYMBOL	CLOSE
JP Asso.	20.9	-4.57	IDEA	84.3
Bharti Airtel	395.5	-2.45	CIPLA	538.5
DLF	198.9	-2.19	WIPRO	263.2
Cipla/India	538.2	-2.06	COAL INDIA	254.5
Wipro	263.4	-1.92	AUROBINDO PHARMA	700.0

BSE 500

TOP OUTPERFORMERS			TOP UNDERPERFORMERS	
SYMBOL	CLOSE	%	SYMBOL	CLOSE
Himatsingka Seide Ltd	379.7	5.74	Religare Enterprises Ltd	102.4
JB Chemicals & Pharmaceuticals Ltd	328.3	5.17	Unitech Ltd	7.6
Videocon Industries Ltd	29.0	4.88	TAKE Solutions Ltd	160.1
KPR Mill Ltd	818.4	4.24	IDFC Bank Ltd	62.1
NIIT Technologies Ltd	588.8	4.24	Shriram City Union Finance Ltd	2236.8
Indraprastha Gas Ltd	1117.1	4.05	Tube Investments of India Ltd	738.1
Triveni Turbine Ltd	152.5	3.92	Rain Industries Ltd	124.0
Phoenix Mills Ltd/The	483.5	3.54	TV Today Network Ltd	243.9
Alembic Pharmaceuticals Ltd	534.3	3.52	Jaiprakash Associates Ltd	20.9
Navin Fluorine International Ltd	3145.7	3.47	Manappuram Finance Ltd	97.4
Avanti Feeds Ltd	1603.5	3.44	Indiabulls Real Estate Ltd	202.9
Majesco Ltd	315.9	3.27	South Indian Bank Ltd/The	27.7
Bajaj Electricals Ltd	340.3	3.18	Amtek Auto Ltd	30.1
Jindal Steel & Power Ltd	138.5	2.94	Shriram Transport Finance Co Ltd	1014.3
Hexaware Technologies Ltd	252.2	2.83	Hindustan Construction Co Ltd	39.6
Tamil Nadu Newsprint & Papers Ltd	330.7	2.80	HSIL Ltd	385.8
Suzlon Energy Ltd	19.4	2.65	Idea Cellular Ltd	84.4
Tata Investment Corp Ltd	746.5	2.51	SpiceJet Ltd	121.1
Torrent Pharmaceuticals Ltd	1328.4	2.50	Bank of India	144.4
Kansai Nerolac Paints Ltd	455.2	2.42	Gujarat Pipavav Port Ltd	146.0
Bliss Gvs Pharma Ltd	155.3	2.41	Indian Bank	296.8
VA Tech Wabag Ltd	681.9	2.35	Gayatri Projects Ltd	170.4
Bajaj Auto Ltd	2793.4	2.34	Raymond Ltd	789.5
Hindalco Industries Ltd	200.2	2.25	Bombay Dyeing & Manufacturing Co Ltd	86.7
Bharat Petroleum Corp Ltd	677.8	2.22	Gujarat Fluorochemicals Ltd	826.8



TRENDER+ OF NIFTY 50 STOCKS

SCRIP NAME	CLOSE	R 1	R 2	S 1	S 2	TRENDER+	PIVOT TABLE						
								NIFTY	SENSEX	BANK NIFTY	CNX IT		
ACC Ltd	1651	1663	1675	1632	1614	UP							
Adani Ports & Special Economi	373	376	379	371	369	Down							
Ambuja Cements Ltd	255	257	259	253	251	UP							
Asian Paints Ltd	1132	1137	1142	1125	1117	Flat	HIGH	9830	31885	23745		10612	
Aurobindo Pharma Ltd	700	713	725	692	684	UP	LOW	9779	31718	23553		10333	
Axis Bank Ltd	507	511	515	504	502	UP	CLOSE	9786	31747	23585		10430	
Bajaj Auto Ltd	2793	2819	2844	2751	2710	UP	PIVOT	9798	31784	23627		10458	
Bank of Baroda	163	166	170	160	158	Flat	R 1	9818	31849	23702		10584	
Bharat Petroleum Corp Ltd	678	685	691	668	658	UP	R 2	9850	31950	23819		10737	
Bharti Airtel Ltd	395	405	415	390	384	UP	S 1	9767	31682	23510		10305	
Bharti Infratel Ltd	410	415	419	405	401	UP	S 2	9747	31617	23435		10180	
Bosch Ltd	23858	24027	24196	23702	23546	Flat							
Cipla Ltd/India	538	549	559	532	526	Down							
Coal India Ltd	255	258	262	252	250	UP							
Dr Reddy's Laboratories Ltd	2691	2721	2752	2672	2653	UP							
Eicher Motors Ltd	28131	28294	28457	27924	27717	UP							
GAIL India Ltd	363	369	374	360	356	UP							
Grasim Industries Ltd	1258	1267	1277	1250	1242	Down							
HCL Technologies Ltd	851	865	878	841	832	UP							
HDFC Bank Ltd	1680	1692	1703	1668	1656	UP							
Hero MotoCorp Ltd	3748	3759	3769	3736	3725	UP							
Hindalco Industries Ltd	201	204	206	197	192	UP							
Hindustan Unilever Ltd	1106	1114	1121	1098	1090	UP							
Housing Development Finance	1643	1651	1660	1632	1621	UP							
ICICI Bank Ltd	290	292	295	288	286	Down							
Indiabulls Housing Finance Ltd	1085	1096	1107	1071	1057	Flat							
Indian Oil Corp Ltd	388	391	394	382	377	Flat							
IndusInd Bank Ltd	1561	1571	1581	1551	1540	UP							
Infosys Ltd	975	991	1007	958	941	UP							
ITC Ltd	330	334	337	329	327	UP							
Kotak Mahindra Bank Ltd	959	968	977	952	946	Down							
Larsen & Toubro Ltd	1741	1751	1760	1731	1720	UP							
Lupin Ltd	1140	1159	1178	1128	1117	UP							
Mahindra & Mahindra Ltd	1390	1399	1407	1378	1365	UP							
Maruti Suzuki India Ltd	7457	7501	7546	7406	7356	UP							
NTPC Ltd	163	165	167	161	158	UP							
Oil & Natural Gas Corp Ltd	160	162	165	159	158	Down							
Power Grid Corp of India Ltd	212	213	215	211	210	UP							
Reliance Industries Ltd	1494	1504	1513	1486	1478	UP							
State Bank of India	284	288	292	281	279	UP							
Sun Pharmaceutical Industries	564	570	576	560	556	UP							
Tata Consultancy Services Ltd	2476	2518	2561	2430	2383	UP							
Tata Motors Ltd	272	274	277	270	268	Flat							
Tata Motors Ltd	457	463	468	451	445	UP							
Tata Power Co Ltd/The	83	84	85	82	82	UP							
Tata Steel Ltd	557	561	565	554	551	UP							
Tech Mahindra Ltd	385	391	397	381	377	Flat							
UltraTech Cement Ltd	4145	4163	4182	4133	4122	UP							
Wipro Ltd	263	270	278	259	255	UP							
Yes Bank Ltd	1515	1529	1544	1504	1494	UP							
Zee Entertainment Enterprises	506	509	512	505	503	UP							



HOW TO TRADE USING THE TRENDER+

CLOSING PRICES

Closing price is the price at which scrip closes on the date mentioned in the report. Traders may initiate their intraday trade on this level. The stock or index should sustain above or below the pivot else you should exit the trade.

TREND

Trend is the level at which the tendency of stocks can be identified. For best results, you can use the 'trender' to trade. A 'weak' trend denoted by "DOWN" means that traders can trade with a negative bias. If the trend is 'strong', denoted by "UP", one can trade with a positive bias on the long side. Base price should be the pivot point price.

IF THE TREND IS UP

Ideally, for a buy position, buy at the pivot point and use S1 as the stop loss for a target of levels around R2 and higher.

IF THE TREND IS DOWN

Ideally, for a sell position, sell at the pivot point and use R1 as a stop loss and S2 or lower levels as a target level.

TRENDER + : This is a broad based technical trend of the stock prevalent, may or may not be necessarily for the day.

DAILY PROJECTED RANGE : Projected Daily high and low are indicative range for the day, if the price moves out of the range the trend in that side may accelerate and turn bullish or bearish.

THE TREND AND THE DAILY PROJECTED RANGE IS BASED ON CERTAIN SIMPLE CALCULATIONS WHICH IS PROVIDED BY BLOOMBERG, EXCLUSIVELY USED BY ANAND RATHI

Disclaimer-This report has been issued by Anand Rathi Share and Stock Brokers Limited (ARSSBL), which is regulated by SEBI. The information herein was obtained from various sources; we do not guarantee its accuracy or completeness. Neither the information nor any opinion expressed constitutes an offer, or an invitation to make an offer, to buy or sell any securities or any options, futures or other derivatives related to such securities ("related investments"). ARSSBL and its affiliates may trade for their own accounts as market maker / jobber and/or arbitrageur in any securities of this issuer(s) or in related investments, and may be on the opposite side of public orders. ARSSBL, its affiliates, directors, officers, and employees may have a long or short position in any securities of this issuer(s) or in related investments. ARSSBL or its affiliates may from time to time perform investment banking or other services for, or solicit investment banking or other business from, any entity mentioned in this report. This research report is prepared for private circulation. It does not have regard to the specific investment objectives, financial situation and the particular needs of any specific person who may receive this report. Investors should seek financial advice regarding the appropriateness of investing in any securities or investment strategies discussed or recommended in this report and should understand that statements regarding future prospects may not be realized. Investors should note that income from such securities, if any, may fluctuate and that each security's price or value may rise or fall. Past performance is not necessarily a guide to future performance. Foreign currency rates of exchange may adversely affect the value, price or income of any security or related investment mentioned in this report.

ANAND RATHI SHARE AND STOCK BROKERS LIMITED

4 th Floor , Silver Metropolis, Jaicoach Compound Opposite Bimbisar Nagar, Goregaon(East), Mumbai - 400063.

Tel No: +91 22 4001 3700 | Fax No: +91 22 4001 3770 | Website: www.rathi.com