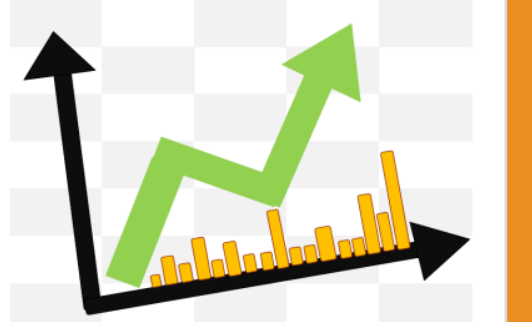




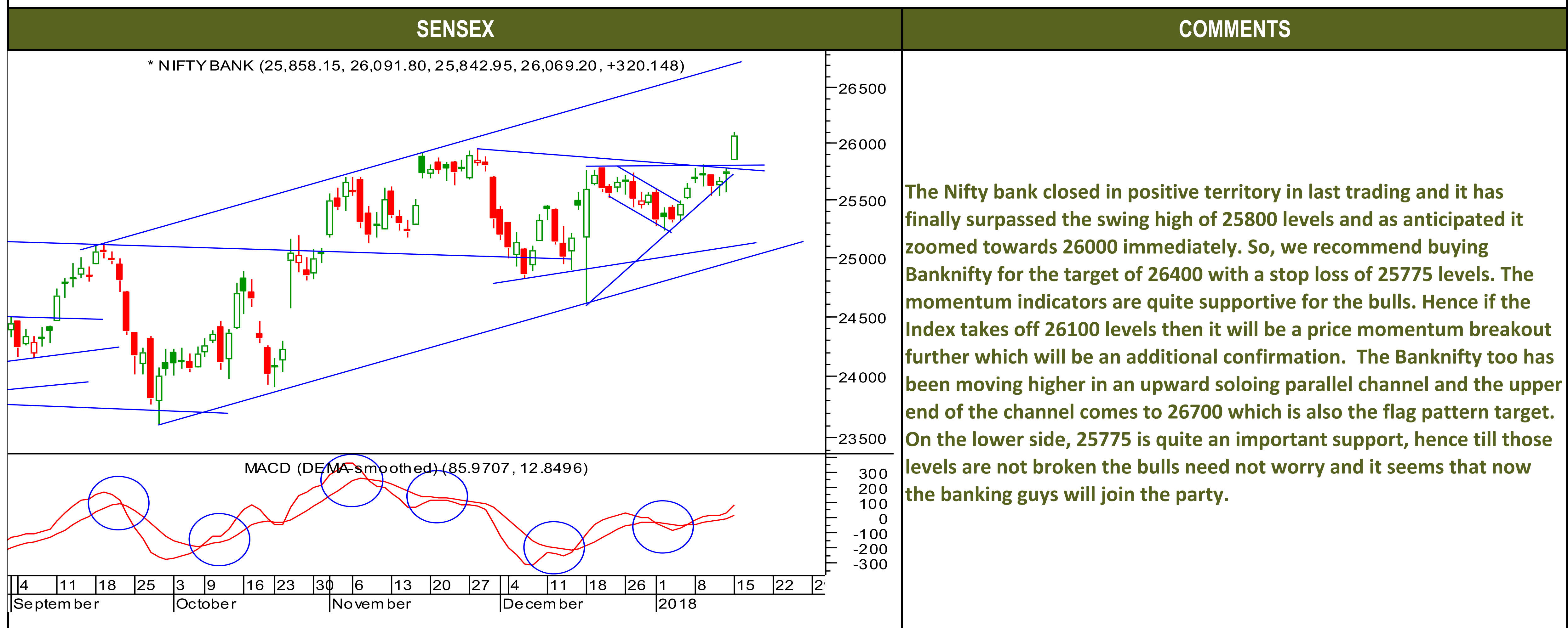
Tuesday, January 16, 2018

TECHNICALS



Tuesday, January 16, 2018

TECHNICALS





TECHNICALS

BANK NIFTY	COMMENTS
<p>* S&P BSE - SENSEX (34,687.21, 34,963.69, 34,687.21, 34,843.51, +251.121)</p> <p>MACD (DEMA-smoothed) (198.758, 137.044)</p> <p>14 21 28 4 11 18 25 3 9 16 23 30 6 13 20 27 4 11 18 26 1 8 15 22 2 September October November December 2018</p>	<p>Sensex too closed in the positive territory in last trading session and the daily momentum indicator is still in the buy mode which is a positive sign for the bulls in the short term. Now, the Index has taken off its swing as anticipated and it zoomed towards our short term target of 35000 levels. Now, on the lower side, 34300 is an immediate support and below that 34000 levels and till those lows aren't broken the bulls need not worry and the bulls can now extend the target to 35500 levels.</p>



Tuesday, January 16, 2018

INDIAN INDICES

INDICES	CLOSE	CHANGE	% CHG
SENSEX	34844	251.12	0.73
NIFTY	10742	60.30	0.56

TURNOVER & MARKET CAP

Rs. (Cr.)	YEST'DAY	PREV.DAY	% CHG
BSE Cash	5391	5254	2.61
NSE Cash	34009	38117	-10.78
Derivatives(bn)	5626	10203	-44.86

INSTITUTIONAL ACTIVITIES

DII Equity	696	770	-9.58
FII Equity	-158	-624	-74.64
FII F&O	2119	290	630.45

ADVANCES & DECLINES

EXCHANGE	ADV	DECLINES	TOTAL
BSE	1592	1584	3176
NSE	902	874	1776

INDIAN ADR's

ADR	CLOSE	PREV.CLOSE	% CHG
Infosys	17.27	16.81	-2.66
HDFC Bank	101.35	102.43	1.07
Wipro	5.72	5.68	-0.70
ICICI Bank	9.76	9.98	2.25
Sterlite Inds.	26.00	25.95	-0.19
Dr. Reddy's Lab	38.07	38.20	0.34

SECTORAL INDICES

BSE			NSE		
INDICES	CLOSE	%	INDICES	CLOSE	%
CNX Bank	26069	1.24	BSE MIDcap	18129	-0.04
CNX IT	11993	-0.88	BSE SmallCap	20047	0.27
CNX Reality	367	0.03	BSE 200	4774	0.39
CNX FMCG	27171	-0.09	OTHER IMP. DATA		
CNX Infra	3688	-0.40	10 Yr Gsec yield	7.27	
CNX Pharma	9660	-0.84	RS/\$	63.43	
BSE Auto	26250	-0.89	\$ Index	90.45	
BSE Metal	15881	0.22	Brent Crude (\$)	69.59	
CNX MNC	14821	-0.36	Gold (\$)	1343.10	
BSE 500	15342	0.38	Silver (\$)	17.36	
Nifty Midcap	5641	-0.36	PE	CURRENT AVG	
BSE 100	11254	0.44	NIFTY	24.8	19.7

TOP OUTPERFORMERS

SENSEX			NIFTY	
SYMBOL	CLOSE	%	SYMBOL	CLOSE
HDFC	1870.0	6.17	HDFC	1871.2
ICICI Bank	329.5	3.73	ICICI Bank	329.3
Tata Steel	783.2	1.58	AMBUJA	277.0
HDFC Bank	1894.7	1.58	ULTRATECHCEM	4520.2
Jindal Steel	267.4	0.96	Zee Entertainment Enterprises Ltd.	606.2

TOP UNDERPERFORMERS

SENSEX			NIFTY	
SYMBOL	CLOSE	%	SYMBOL	CLOSE
ONGC	196.6	-1.85	IDEA	104.6
Hero Motocorp	3627.8	-1.57	EICHER MOTORS	27981.5
Sun Pharma	576.4	-1.34	ONGC	196.6
BHEL	101.4	-1.27	HCL TECH	909.3
Tata power	97.9	-1.26	HEROMOTOCORP	3628.8

BSE 500

TOP OUTPERFORMERS			TOP UNDERPERFORMERS	
SYMBOL	CLOSE	%	SYMBOL	CLOSE
Hathway Cable & Datacom Ltd	46.5	14.83	SITI Networks Ltd	25.0
LA Opala RG Ltd	711.3	14.65	Sintex Industries Ltd	25.4
Gujarat Narmada Valley Fertilizers	540.6	12.01	IDFC Bank Ltd	64.3
Welspun Corp Ltd	185.2	9.10	Persistent Systems Ltd	747.3
Mahanagar Telephone Nigam Ltd	29.1	6.80	AIA Engineering Ltd	1568.4
PC Jeweller Ltd	584.5	6.46	Future Consumer Ltd	69.7
GHCL Ltd	335.0	6.21	BF Utilities Ltd	561.6
Polaris Consulting & Services Ltd/In	414.2	6.18	Karnataka Bank Ltd/The	160.9
Housing Development Finance Cor	1870.0	6.17	Idea Cellular Ltd	104.7
India Cements Ltd/The	201.5	5.61	Manpasand Beverages Ltd	463.2
Nava Bharat Ventures Ltd	181.4	5.37	Navkar Corp Ltd	208.5
Astra Microwave Products Ltd	123.5	5.29	Unitech Ltd	9.3
GRUH Finance Ltd	531.8	5.15	Inox Leisure Ltd	277.7
GMR Infrastructure Ltd	22.1	4.99	Great Eastern Shipping Co Ltd/The	442.8
Swan Energy Ltd	215.4	4.87	IL&FS Transportation Networks Ltd	87.6
Gujarat State Fertilizers & Chemica	165.0	4.73	Aditya Birla Fashion and Retail Ltd	171.3
Phoenix Mills Ltd/The	617.8	4.52	IDFC Ltd	64.1
DEN Networks Ltd	139.1	4.39	Kalpataru Power Transmission Ltd	503.3
Jubilant Life Sciences Ltd	831.3	4.23	Tata Motors Ltd	246.2
Rallis India Ltd	276.6	3.91	TAKE Solutions Ltd	164.3
Rashtriya Chemicals & Fertilizers Lt	110.6	3.90	Allcargo Logistics Ltd	214.0
Radico Khaitan Ltd	327.0	3.84	Dilip Buildcon Ltd	945.4
ICICI Bank Ltd	329.5	3.73	FDC Ltd/India	237.8
Chennai Petroleum Corp Ltd	460.8	3.62	GAIL India Ltd	488.8
Aegis Logistics Ltd	298.2	3.33	Network 18 Media & Investments Ltd	61.0



HOW TO TRADE USING THE TRENDER+

CLOSING PRICES

Closing price is the price at which scrip closes on the date mentioned in the report. Traders may initiate their intraday trade on this level. The stock or index should sustain above or below the pivot else you should exit the trade.

TREND

Trend is the level at which the tendency of stocks can be identified. For best results, you can use the 'trender' to trade. A 'weak' trend denoted by "DOWN" means that traders can trade with a negative bias. If the trend is 'strong', denoted by "UP", one can trade with a positive bias on the long side. Base price should be the pivot point price.

IF THE TREND IS UP

Ideally, for a buy position, buy at the pivot point and use S1 as the stop loss for a target of levels around R2 and higher.

IF THE TREND IS DOWN

Ideally, for a sell position, sell at the pivot point and use R1 as a stop loss and S2 or lower levels as a target level.

TRENDER + : This is a broad based technical trend of the stock prevalent, may or may not be necessarily for the day.

DAILY PROJECTED RANGE : Projected Daily high and low are indicative range for the day, if the price moves out of the range the trend in that side may accelerate and turn bullish or bearish.

THE TREND AND THE DAILY PROJECTED RANGE IS BASED ON CERTAIN SIMPLE CALCULATIONS WHICH IS PROVIDED BY BLOOMBERG, EXCLUSIVELY USED BY ANAND RATHI

Disclaimer:- This report has been issued by Anand Rathi Share and Stock Brokers Limited (ARSSBL), which is regulated by SEBI. The information herein was obtained from various sources; we do not guarantee its accuracy or completeness. Neither the information nor any opinion expressed constitutes an offer, or an invitation to make an offer, to buy or sell any securities or any options, futures or other derivatives related to such securities ("related investments"). ARSSBL and its affiliates may trade for their own accounts as market maker / jobber and/or arbitrageur in any securities of this issuer(s) or in related investments, and may be on the opposite side of public orders. ARSSBL, its affiliates, directors, officers, and employees may have a long or short position in any securities of this issuer(s) or in related investments. ARSSBL or its affiliates may from time to time perform investment banking or other services for, or solicit investment banking or other business from, any entity mentioned in this report. This research report is prepared for private circulation. It does not have regard to the specific investment objectives, financial situation and the particular needs of any specific person who may receive this report. Investors should seek financial advice regarding the propriateness of investing in any securities or investment strategies discussed or recommended in this report and should understand that statements regarding future prospects may not be realized. Investors should note that income from such securities, if any, may fluctuate and that each security's price or value may rise or fall. Past performance is not necessarily a guide to future performance. Foreign currency rates of exchange may adversely affect the value, price or income of any security or related investment mentioned in this report.

ANAND RATHI SHARE AND STOCK BROKERS LIMITED

4 th Floor , Silver Metropolis, Jaicoach Compound Opposite Bimbisar Nagar, Goregaon(East), Mumbai - 400063.

Tel No: +91 22 4001 3700 | Fax No: +91 22 4001 3770 | Website: www.rathi.com