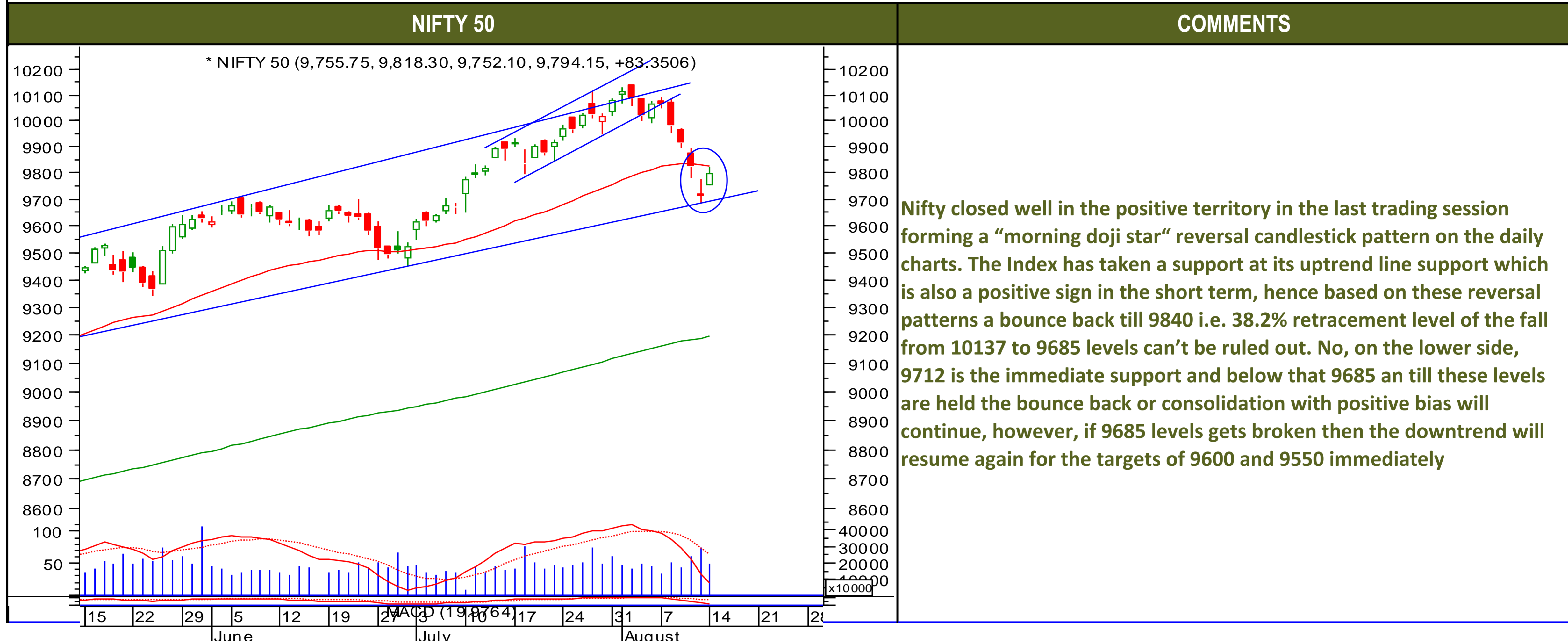




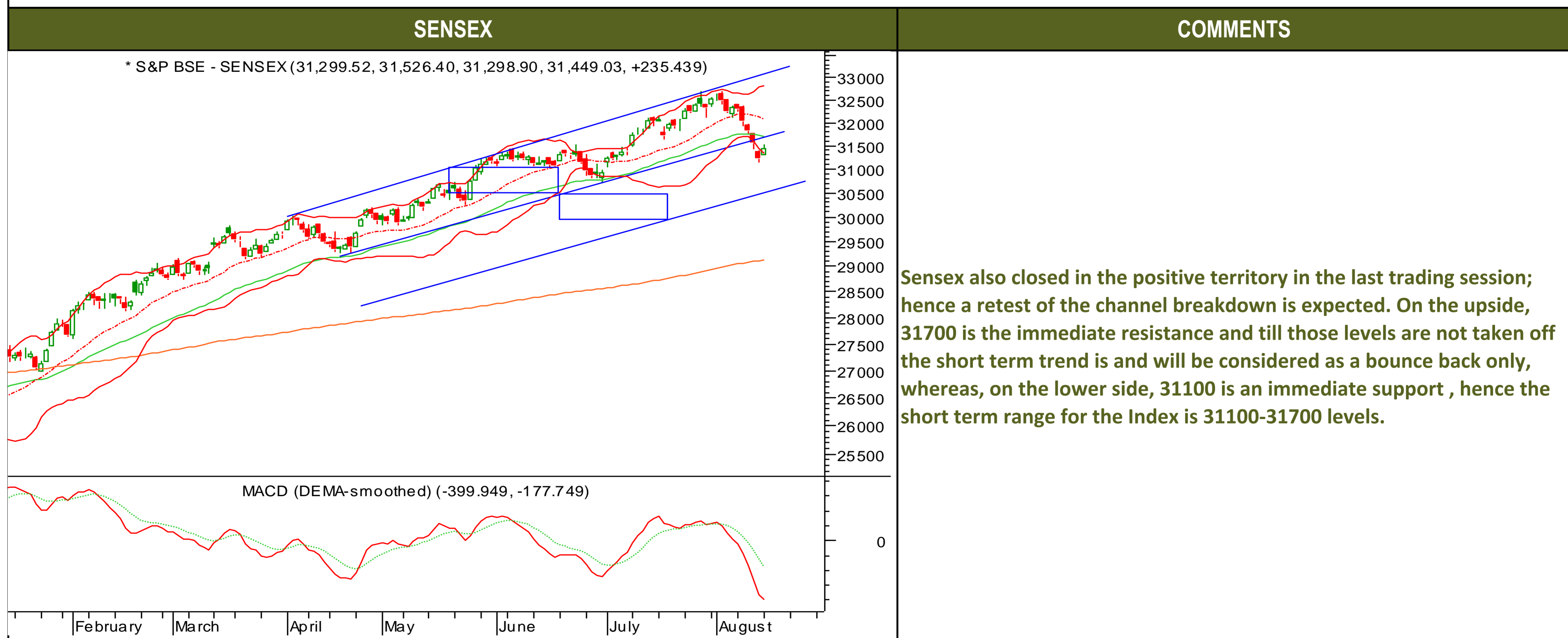
Wednesday, August 16, 2017

### TECHNICALS



Wednesday, August 16, 2017

### TECHNICALS





### TECHNICALS

BANK NIFTY	COMMENTS
<p>* NIFTY BANK (24,051.05, 24,212.15, 24,038.15, 24,115.75, +130.000)</p> <p>MACD (DEMA-smoothed) (-291.143, -62.5950)</p>	<p>The Nifty bank too closed in the positive territory in the last trading session however the bounce back wasn't as strong as it was in the Nifty and Sensex or other Indices like Midcap and Smallcap Indices. Now, on the upside, we have been saying that the immediate resistance is pegged at 24500-24600 levels which is the neckline resistance levels and till those levels are not taken off the overall trend will remain sideways to negative, however with the other Indices the bounce back can continue and take the Index back to the neckline resistance levels. On the lower side, 23800 is an immediate support and till these levels are not broken we can see these Index continue its bounce, however, if 23800 levels are broken then 23000 will be the next target.</p>

### TECHNICAL CALLS

: Rs.		
EXECUTION PRICE RANGE	STOP LOSS	TARGET
Buy Between Rs. To Rs.		



Wednesday, August 16, 2017

### INDIAN INDICES

INDICES	CLOSE	CHANGE	% CHG
SENSEX	31449	235.44	0.75
NIFTY	9794	83.35	0.86

### TURNOVER & MARKET CAP

Rs. (Cr.)	YEST'DAY	PREV.DAY	% CHG
BSE Cash	4366	4589	-4.87
NSE Cash	23896	32916	-27.40
Derivatives(bn)	5712	11574	-50.65

### INSTITUTIONAL ACTIVITIES

	2017	822	145.44
DII Equity	2017	822	145.44
FII Equity	-1944	-1171	65.97
FII F&O	-1107	3039	-136.42

### ADVANCES & DECLINES

EXCHANGE	ADV	DECLINES	TOTAL
BSE	1888	705	2593
NSE	1367	337	1704

### INDIAN ADR's

ADR	CLOSE	PREV.CLOSE	% CHG
Infosys	15.32	15.49	1.11
HDFC Bank	94.48	93.60	-0.93
Wipro	6.13	6.16	0.49
ICICI Bank	8.79	8.90	1.25
Sterlite Inds.	22.20	22.00	-0.90
Dr. Reddy's Lab	30.33	31.18	2.80

### SECTORAL INDICES

BSE			NSE		
INDICES	CLOSE	%	INDICES	CLOSE	%
CNX Bank	24116	0.54	BSE MIDcap	15093	2.49
CNX IT	10587	-0.56	BSE SmallCap	15413	2.51
CNX Reality	270	5.79	BSE 200	4267	1.22
CNX FMCG	24908	0.59	<b>OTHER IMP. DATA</b>		
CNX Infra	3308	1.57	<b>10 Yr Gsec yield</b>	6.52	
CNX Pharma	8758	2.78	<b>RS/\$</b>	64.12	
BSE Auto	23605	1.36	<b>\$ Index</b>	93.34	
BSE Metal	12713	3.53	<b>Brent Crude (\$)</b>	51.75	
CNX MNC	12737	1.32	<b>Gold (\$)</b>	1281.21	
BSE 500	13513	1.32	<b>Silver (\$)</b>	17.02	
Nifty Midcap	4628	1.32	<b>PE</b>	<b>CURRENT AVG</b>	
BSE 100	10167	1.03	NIFTY	23.1	19.7

### TOP OUTPERFORMERS

SENSEX			NIFTY	
SYMBOL	CLOSE	%	SYMBOL	CLOSE
DLF	181.1	16.51	CIPLA	570.1
JP Asso.	23.0	7.75	SUNPHARMA	471.8
Jindal Steel	136.6	7.18	TATA STEEL	623.8
Cipla/India	570.0	7.18	GRASIM	1108.7
Sun Pharma	472.5	4.70	TATA POWER	79.6

### TOP UNDERPERFORMERS

SENSEX			NIFTY	
SYMBOL	CLOSE	%	SYMBOL	CLOSE
Bharti Airtel	408.6	-1.47	BHARTI	408.6
TCS	2469.2	-1.00	TCS	2469.4
SBI	278.1	-0.93	KOTAK BANK	982.6
Infosys	979.5	-0.84	SBI	278.2
Wipro	289.0	-0.31	BHARTI INFRA TEL	379.9

### BSE 500

TOP OUTPERFORMERS			TOP UNDERPERFORMERS	
SYMBOL	CLOSE	%	SYMBOL	CLOSE
DLF Ltd	181.1	16.51	J Kumar Infraprojects Ltd	186.3
Reliance Communications Ltd	24.1	16.14	ISGEC Heavy Engineering Ltd	5870.7
Avanti Feeds Ltd	1901.1	15.56	Religare Enterprises Ltd	82.7
BEML Ltd	1746.3	12.43	Corp Bank	45.8
PC Jeweller Ltd	329.4	11.25	Indo Count Industries Ltd	112.7
Sintex Industries Ltd	31.7	10.86	Bosch Ltd	22144.0
OnMobile Global Ltd	60.2	10.77	Apollo Hospitals Enterprise Ltd	1192.4
Navkar Corp Ltd	196.3	9.73	APL Apollo Tubes Ltd	1525.7
Tata Global Beverages Ltd	178.7	9.00	Kwality Ltd	136.6
Tata Communications Ltd	629.2	7.93	Max Financial Services Ltd	600.1
Jaiprakash Associates Ltd	23.0	7.75	ITD Cementation India Ltd	155.9
Housing Development & Infrastruct	62.9	7.62	Jagran Prakashan Ltd	169.7
CG Power and Industrial Solutions	81.1	7.28	HCL Technologies Ltd	859.7
Srei Infrastructure Finance Ltd	118.7	7.18	Bharti Airtel Ltd	408.6
Jindal Steel & Power Ltd	136.6	7.18	Hatsun Agro Products Ltd	626.8
Voltas Ltd	553.3	7.10	Fortis Healthcare Ltd	149.9
Himatsingka Seide Ltd	332.4	7.05	SRF Ltd	1465.7
Ashoka Buildcon Ltd	188.5	7.01	Bharat Petroleum Corp Ltd	478.7
Future Consumer Ltd	41.3	6.87	Shoppers Stop Ltd	339.9
DEN Networks Ltd	81.8	6.72	Gujarat Gas Ltd	764.9
Lakshmi Machine Works Ltd	6200.7	6.66	Tata Consultancy Services Ltd	2469.2
Indraprastha Gas Ltd	1296.3	6.60	State Bank of India	278.1
Inox Leisure Ltd	246.1	6.51	Narayana Hrudayalaya Ltd	297.5
HCL Infosystems Ltd	43.6	6.35	Sun Pharma Advanced Research Co Ltd	334.9
Welspun India Ltd	73.4	6.30	Kotak Mahindra Bank Ltd	982.5



### TRENDER+ OF NIFTY 50 STOCKS

SCRIP NAME	CLOSE	R 1	R 2	S 1	S 2	TRENDER+	PIVOT TABLE				
ACC Ltd	1785	1802	1819	1759	1734	UP					
Adani Ports & Special Econom	396	406	416	386	375	UP					
Ambuja Cements Ltd	265	267	268	263	261	Down					
Asian Paints Ltd	1154	1163	1173	1145	1136	UP	HIGH	NIFTY	SENSEX	BANK NIFTY	CNX IT
Aurobindo Pharma Ltd	715	722	729	707	699	Flat	LOW	9752	31299	24038	10569
Axis Bank Ltd	492	496	501	489	485	UP	CLOSE	9794	31449	24116	10587
Bajaj Auto Ltd	2832	2854	2876	2798	2764	Down	PIVOT	9788	31425	24122	10616
Bank of Baroda	142	144	145	140	138	Down	R 1	9824	31551	24206	10663
Bharat Petroleum Corp Ltd	478	486	494	468	458	Down	R 2	9854	31652	24296	10740
Bharti Airtel Ltd	409	414	419	404	400	Down	S 1	9758	31323	24032	10540
Bharti Infratel Ltd	380	384	389	377	374	Down	S 2	9722	31197	23948	10493
Bosch Ltd	22138	22728	23317	21775	21411	Down					
Cipla Ltd/India	570	580	590	556	542	UP					
Coal India Ltd	238	241	243	236	234	Down					
Dr Reddy's Laboratories Ltd	2002	2038	2074	1968	1934	Down					
Eicher Motors Ltd	30386	30951	31517	29793	29199	Down					
GAIL India Ltd	373	376	379	370	367	UP					
Grasim Industries Ltd	1109	1127	1146	1080	1051	UP					
HCL Technologies Ltd	860	874	887	851	843	Down					
HDFC Bank Ltd	1757	1772	1787	1745	1733	UP					
Hero MotoCorp Ltd	3957	4005	4053	3879	3802	UP					
Hindalco Industries Ltd	229	233	237	224	219	UP					
Hindustan Unilever Ltd	1156	1168	1180	1145	1135	Down					
Housing Development Finance	1714	1742	1771	1688	1663	Down					
ICICI Bank Ltd	292	294	296	289	285	Flat					
Indiabulls Housing Finance Ltd	1176	1185	1195	1162	1149	UP					
Indian Oil Corp Ltd	419	426	432	412	404	UP					
IndusInd Bank Ltd	1622	1638	1653	1609	1597	Down					
Infosys Ltd	981	988	995	976	971	Flat					
ITC Ltd	271	274	276	270	268	UP					
Kotak Mahindra Bank Ltd	983	995	1007	975	968	Down					
Larsen & Toubro Ltd	1147	1160	1174	1126	1106	Down					
Lupin Ltd	967	977	987	950	933	Flat					
Mahindra & Mahindra Ltd	1356	1369	1381	1345	1335	UP					
Maruti Suzuki India Ltd	7608	7665	7722	7533	7458	Down					
NTPC Ltd	172	174	176	169	166	UP					
Oil & Natural Gas Corp Ltd	162	163	164	160	159	Down					
Power Grid Corp of India Ltd	223	225	227	220	217	UP					
Reliance Industries Ltd	1573	1585	1596	1561	1549	Down					
State Bank of India	278	282	285	276	273	UP					
Sun Pharmaceutical Industries	472	488	505	444	416	UP					
Tata Consultancy Services Ltd	2469	2499	2528	2452	2434	Down					
Tata Motors Ltd	226	228	230	224	222	Down					
Tata Motors Ltd	375	381	386	371	367	Down					
Tata Power Co Ltd/The	80	82	84	77	75	Flat					
Tata Steel Ltd	624	631	639	611	598	UP					
Tech Mahindra Ltd	402	407	411	399	395	UP					
UltraTech Cement Ltd	3961	3978	3996	3938	3916	Down					
Wipro Ltd	289	291	293	287	285	UP					
Yes Bank Ltd	1779	1793	1807	1757	1736	UP					
Zee Entertainment Enterprises	517	525	534	505	492	UP					



## HOW TO TRADE USING THE TRENDER+

## CLOSING PRICES

Closing price is the price at which scrip closes on the date mentioned in the report. Traders may initiate their intraday trade on this level. The stock or index should sustain above or below the pivot else you should exit the trade.

## TREND

Trend is the level at which the tendency of stocks can be identified. For best results, you can use the 'trender' to trade. A 'weak' trend denoted by "DOWN" means that traders can trade with a negative bias. If the trend is 'strong', denoted by "UP", one can trade with a positive bias on the long side. Base price should be the pivot point price.

## IF THE TREND IS UP

Ideally, for a buy position, buy at the pivot point and use S1 as the stop loss for a target of levels around R2 and higher.

## IF THE TREND IS DOWN

Ideally, for a sell position, sell at the pivot point and use R1 as a stop loss and S2 or lower levels as a target level.

**TRENDER +** : This is a broad based technical trend of the stock prevalent, may or may not be necessarily for the day.

**DAILY PROJECTED RANGE** : Projected Daily high and low are indicative range for the day, if the price moves out of the range the trend in that side may accelerate and turn bullish or bearish.

THE TREND AND THE DAILY PROJECTED RANGE IS BASED ON CERTAIN SIMPLE CALCULATIONS WHICH IS PROVIDED BY BLOOMBERG, EXCLUSIVELY USED BY ANAND RATHI

**Disclaimer**-This report has been issued by Anand Rathi Share and Stock Brokers Limited (ARSSBL), which is regulated by SEBI. The information herein was obtained from various sources; we do not guarantee its accuracy or completeness. Neither the information nor any opinion expressed constitutes an offer, or an invitation to make an offer, to buy or sell any securities or any options, futures or other derivatives related to such securities ("related investments"). ARSSBL and its affiliates may trade for their own accounts as market maker / jobber and/or arbitrageur in any securities of this issuer(s) or in related investments, and may be on the opposite side of public orders. ARSSBL, its affiliates, directors, officers, and employees may have a long or short position in any securities of this issuer(s) or in related investments. ARSSBL or its affiliates may from time to time perform investment banking or other services for, or solicit investment banking or other business from, any entity mentioned in this report. This research report is prepared for private circulation. It does not have regard to the specific investment objectives, financial situation and the particular needs of any specific person who may receive this report. Investors should seek financial advice regarding the appropriateness of investing in any securities or investment strategies discussed or recommended in this report and should understand that statements regarding future prospects may not be realized. Investors should note that income from such securities, if any, may fluctuate and that each security's price or value may rise or fall. Past performance is not necessarily a guide to future performance. Foreign currency rates of exchange may adversely affect the value, price or income of any security or related investment mentioned in this report.

ANAND RATHI SHARE AND STOCK BROKERS LIMITED

4 th Floor , Silver Metropolis, Jaicoach Compound Opposite Bimbisar Nagar, Goregaon(East), Mumbai - 400063.

Tel No: +91 22 4001 3700 | Fax No: +91 22 4001 3770 | Website: www.rathi.com