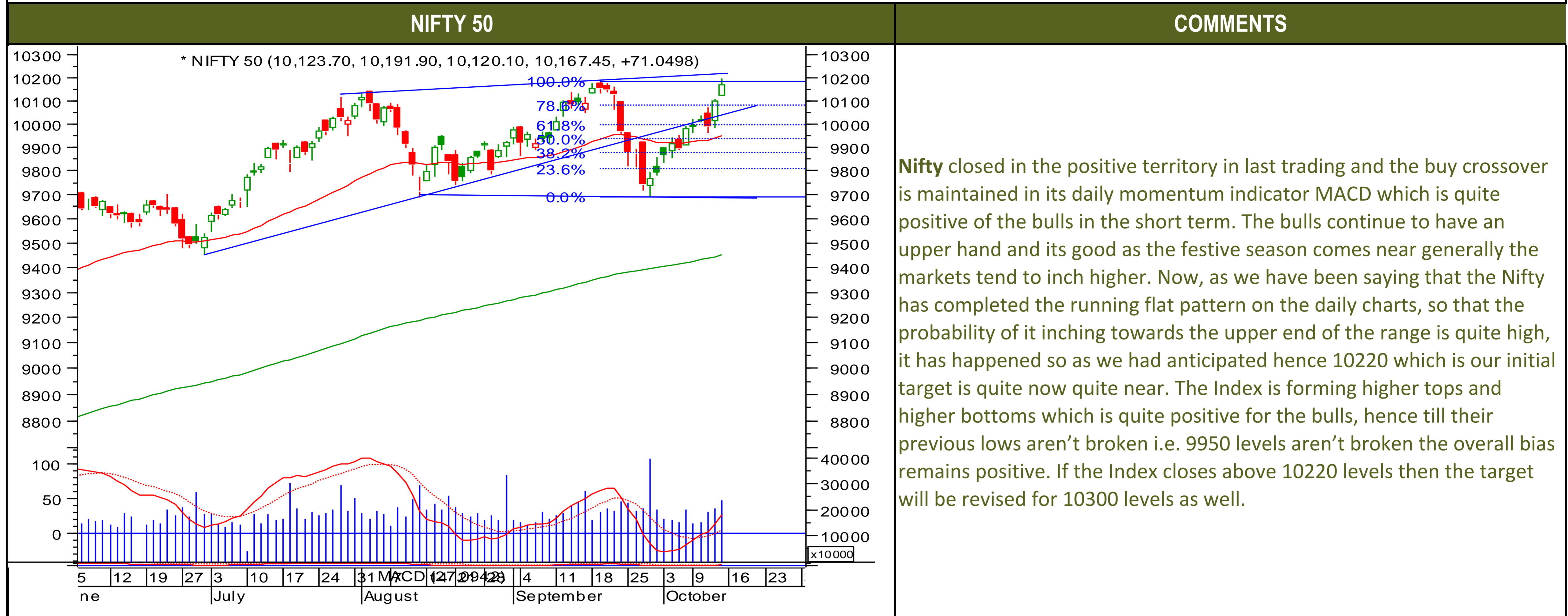




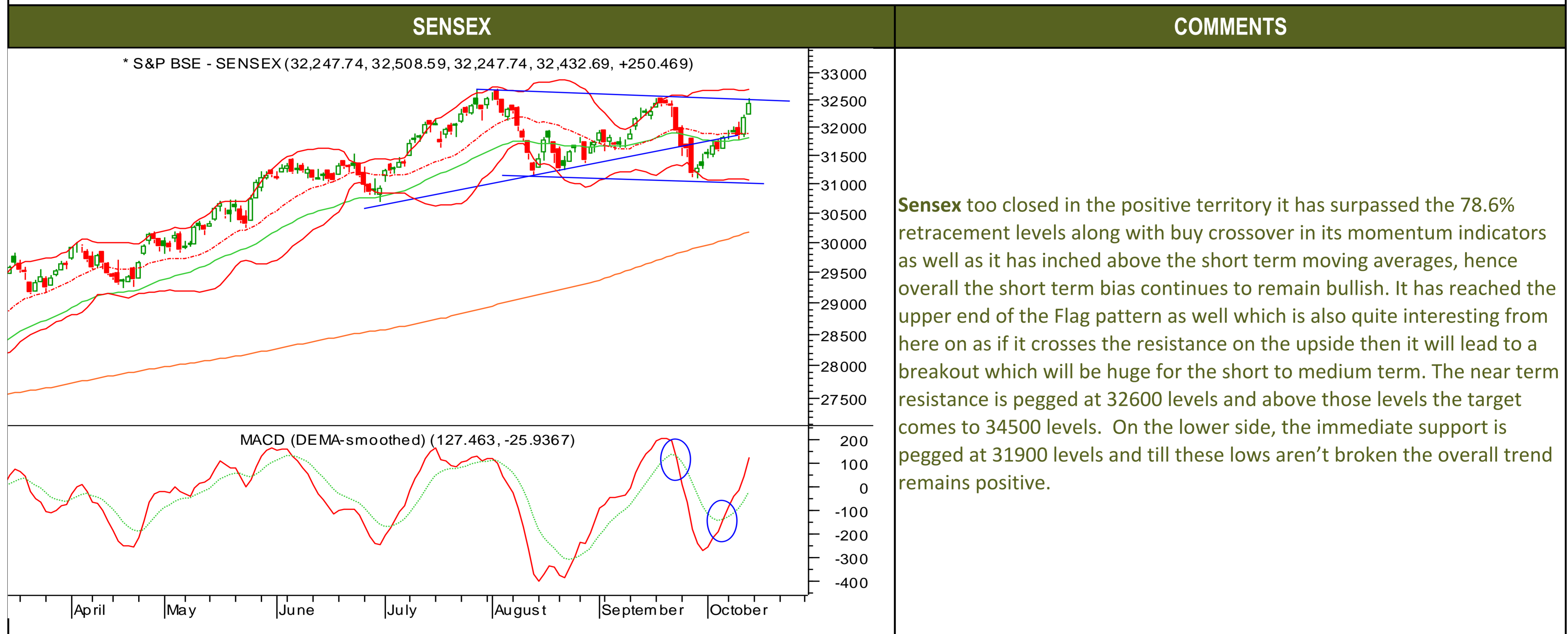
Monday, October 16, 2017

TECHNICALS



Monday, October 16, 2017

TECHNICALS

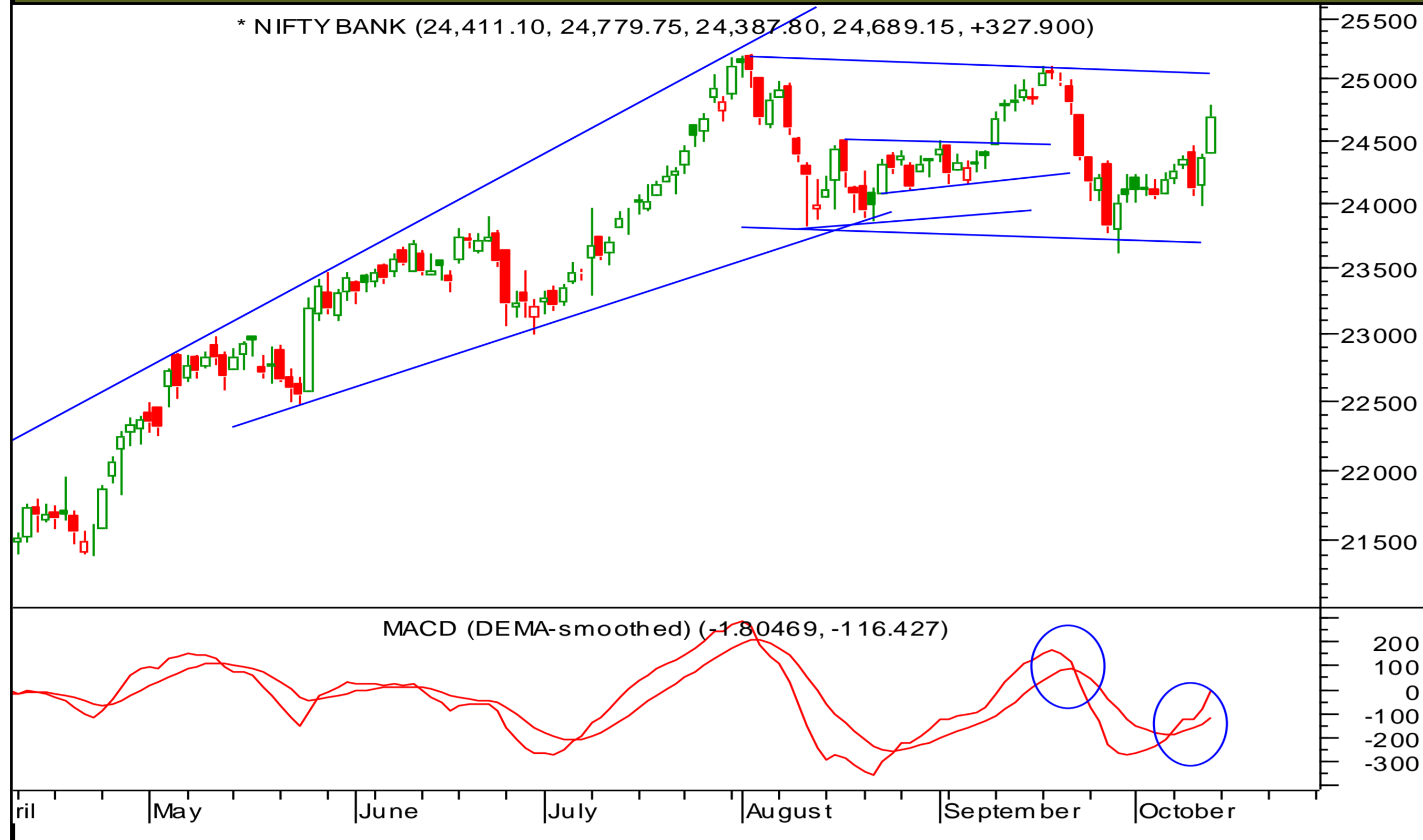




TECHNICALS

BANK NIFTY

* NIFTY BANK (24,411.10, 24,779.75, 24,387.80, 24,689.15, +327.900)



COMMENTS

The Nifty bank closed in positive territory in last trading session and it has made a sharp come back, It has taken off 24461 levels as we had anticipated and above this the next target comes to 25050 level. The way the momentum indicators are in buy mode both on the daily as well as weekly charts the bulls looks in absolute charge. The target above 25050 levels comes to 26500 levels, hence breaking and closing above 25050 levels is going to be very important. On the lower side, 23978 is now an important support and till these levels are not broken the bulls need not worry. The bears are being smashed with this breakout and if 25050 levels are taken off then the remaining bears will also be hammered.



Monday, October 16, 2017

INDIAN INDICES

INDICES	CLOSE	CHANGE	% CHG
SENSEX	32426	244.24	0.76
NIFTY	10167	71.05	0.70

TURNOVER & MARKET CAP

Rs. (Cr.)	YEST'DAY	PREV.DAY	% CHG
BSE Cash	3621	4119	-12.09
NSE Cash	29703	27360	8.56
Derivatives(bn)	11282	7985	41.29

INSTITUTIONAL ACTIVITIES

DII Equity	873	234	273.20
FII Equity	-668	-108	518.93
FII F&O	1080	2101	-48.57

ADVANCES & DECLINES

EXCHANGE	ADV	DECLINES	TOTAL
BSE	1307	984	2291
NSE	788	921	1709

INDIAN ADR's

ADR	CLOSE	PREV.CLOSE	% CHG
Infosys	14.58	14.61	0.21
HDFC Bank	93.40	94.72	1.41
Wipro	5.50	5.52	0.36
ICICI Bank	8.26	8.29	0.36
Sterlite Inds.	24.85	24.40	-1.81
Dr. Reddy's Lab	36.13	35.86	-0.75

SECTORAL INDICES

BSE			NSE		
INDICES	CLOSE	%	INDICES	CLOSE	%
CNX Bank	24689	1.35	BSE MIDcap	15965	0.03
CNX IT	10924	0.39	BSE SmallCap	16926	0.14
CNX Reality	283	0.30	BSE 200	4445	0.55
CNX FMCG	25435	-0.15	OTHER IMP. DATA		
CNX Infra	3353	1.19	10 Yr Gsec yield	6.74	
CNX Pharma	9546	-0.33	RS/\$	64.89	
BSE Auto	24749	0.07	\$ Index	93.09	
BSE Metal	14419	1.16	Brent Crude (\$)	57.28	
CNX MNC	13426	0.18	Gold (\$)	1294.30	
BSE 500	14146	0.52	Silver (\$)	17.25	
Nifty Midcap	4878	0.18	PE	CURRENT AVG	
BSE 100	10567	0.62	NIFTY	23.9	19.7

TOP OUTPERFORMERS

SENSEX			NIFTY	
SYMBOL	CLOSE	%	SYMBOL	CLOSE
Bharti Airtel	431.6	7.89	BHARTI	431.0
JP Asso.	19.8	2.86	IDEA	79.0
Tata Steel	710.6	2.86	BHARTI INFRA TEL	450.0
HDFC Bank	1853.5	2.86	TATA STEEL	710.5
Coal India	288.1	2.00	ULTRATECHCEM	4007.8

TOP UNDERPERFORMERS

SENSEX			NIFTY	
SYMBOL	CLOSE	%	SYMBOL	CLOSE
M&M	1326.4	-0.95	GAIL	436.3
Sun Pharma	534.7	-0.87	SUNPHARMA	533.4
ITC	265.9	-0.43	DR REDDYS	2354.5
Maruti	7872.2	-0.41	M&M	1325.0
NTPC	176.0	-0.37	IDFC	66.2

BSE 500

TOP OUTPERFORMERS			TOP UNDERPERFORMERS	
SYMBOL	CLOSE	%	SYMBOL	CLOSE
Rain Industries Ltd	206.4	9.47	Indoco Remedies Ltd	245.9
Sobha Ltd	464.6	9.25	J Kumar Infraprojects Ltd	218.3
Bharti Airtel Ltd	431.6	7.89	IIFL Holdings Ltd	601.7
DCM Shriram Ltd	513.0	7.10	Hatsun Agro Products Ltd	701.2
Karnataka Bank Ltd/The	163.4	6.69	Indiabulls Real Estate Ltd	215.0
Can Fin Homes Ltd	558.6	6.23	Bombay Dyeing & Manufacturing Co Ltd	207.2
Network 18 Media & Investments Lt	50.2	6.14	Jagran Prakashan Ltd	173.8
Idea Cellular Ltd	78.9	5.91	GHCL Ltd	241.3
Radico Khaitan Ltd	186.6	5.33	Sharda Cropchem Ltd	449.6
Reliance Communications Ltd	17.1	5.25	Chambal Fertilizers and Chemicals Ltd	147.7
Majesco Ltd	554.9	5.11	MMTC Ltd	61.4
Uflex Ltd	467.4	4.92	Westlife Development Ltd	236.4
Bajaj Electricals Ltd	392.2	4.64	HSIL Ltd	441.4
Bharti Infratel Ltd	450.2	4.07	8K Miles Software Services Ltd	491.1
Shriram City Union Finance Ltd	2060.8	3.95	Texmaco Rail & Engineering Ltd	106.0
PVR Ltd	1403.2	3.91	TAKE Solutions Ltd	155.4
Inox Leisure Ltd	243.0	3.80	Welspun India Ltd	65.7
Vijaya Bank	56.9	3.74	Eros International Media Ltd	222.8
SJVN Ltd	34.1	3.50	Magma Fincorp Ltd	176.9
Kirloskar Oil Engines Ltd	372.3	3.42	Videocon Industries Ltd	16.3
South Indian Bank Ltd/The	32.4	3.35	Nava Bharat Ventures Ltd	124.7
Torrent Power Ltd	232.7	3.26	TI Financial Holdings Ltd	589.5
Cyient Ltd	539.4	3.21	Firstsource Solutions Ltd	41.7
Orient Cement Ltd	157.2	3.05	GAIL India Ltd	436.8
NLC India Ltd	97.9	3.00	Intellect Design Arena Ltd	132.6



TRENDER+ OF NIFTY 50 STOCKS

SCRIP NAME	CLOSE	R 1	R 2	S 1	S 2	TRENDER+	PIVOT TABLE				
ACC Ltd	1765	1781	1797	1742	1719	UP					
Adani Ports & Special Economi	408	411	415	402	397	UP					
Ambuja Cements Ltd	277	279	281	275	273	Down					
Asian Paints Ltd	1176	1184	1192	1161	1146	Flat	HIGH	NIFTY	SENSEX	BANK NIFTY	CNX IT
Aurobindo Pharma Ltd	743	750	758	739	735	UP	LOW	10192	32509	24780	10997
Axis Bank Ltd	528	534	540	522	516	UP	CLOSE	10120	32248	24388	10880
Bajaj Auto Ltd	3150	3175	3199	3131	3111	UP	PIVOT	10167	32425	24689	10924
Bank of Baroda	140	142	144	138	136	Down	R 1	10160	32394	24619	10934
Bharat Petroleum Corp Ltd	484	491	497	481	477	Down	R 2	10200	32540	24850	10988
Bharti Airtel Ltd	431	438	446	422	413	UP	S 1	10232	32655	25011	11051
Bharti Infratel Ltd	450	459	468	437	424	UP	S 2	10128	32279	24458	10870
Bosch Ltd	21700	21893	22085	21315	20929	UP		10088	32133	24227	10817
Cipla Ltd/India	593	598	603	588	583	UP					
Coal India Ltd	286	289	292	283	279	UP					
Dr Reddy's Laboratories Ltd	2355	2373	2391	2343	2332	Down					
Eicher Motors Ltd	31398	31588	31778	31209	31021	Down					
GAIL India Ltd	436	445	453	432	427	UP					
Grasim Industries Ltd	1147	1156	1165	1134	1120	Down					
HCL Technologies Ltd	929	939	949	917	904	UP					
HDFC Bank Ltd	1849	1863	1877	1828	1808	UP					
Hero MotoCorp Ltd	3765	3789	3813	3742	3719	Flat					
Hindalco Industries Ltd	267	269	271	263	259	UP					
Hindustan Unilever Ltd	1248	1257	1266	1235	1222	UP					
Housing Development Finance	1764	1774	1785	1752	1741	UP					
ICICI Bank Ltd	271	275	278	268	264	Flat					
Indiabulls Housing Finance Ltd	1283	1295	1307	1269	1255	UP					
Indian Oil Corp Ltd	414	418	422	412	410	Down					
IndusInd Bank Ltd	1747	1756	1766	1739	1731	UP					
Infosys Ltd	929	933	936	927	924	Down					
ITC Ltd	266	268	269	264	263	UP					
Kotak Mahindra Bank Ltd	1079	1094	1110	1058	1037	UP					
Larsen & Toubro Ltd	1138	1147	1155	1133	1128	Down					
Lupin Ltd	1062	1068	1075	1055	1048	UP					
Mahindra & Mahindra Ltd	1325	1339	1354	1317	1309	UP					
Maruti Suzuki India Ltd	7872	7921	7971	7841	7811	Down					
NTPC Ltd	176	178	180	175	173	UP					
Oil & Natural Gas Corp Ltd	170	171	171	169	167	Down					
Power Grid Corp of India Ltd	205	208	211	201	197	Flat					
Reliance Industries Ltd	877	888	898	870	863	UP					
State Bank of India	252	255	258	250	247	UP					
Sun Pharmaceutical Industries	533	540	547	530	526	UP					
Tata Consultancy Services Ltd	2560	2605	2650	2519	2478	UP					
Tata Motors Ltd	237	240	243	235	233	UP					
Tata Motors Ltd	426	430	435	420	414	UP					
Tata Power Co Ltd/The	82	82	83	81	81	UP					
Tata Steel Ltd	711	720	730	698	685	UP					
Tech Mahindra Ltd	475	479	483	472	469	UP					
UltraTech Cement Ltd	4008	4052	4096	3932	3856	UP					
Wipro Ltd	292	295	298	290	288	UP					
Yes Bank Ltd	370	373	377	366	363	UP					
Zee Entertainment Enterprises	510	517	524	506	502	UP					



HOW TO TRADE USING THE TRENDER+

CLOSING PRICES

Closing price is the price at which scrip closes on the date mentioned in the report. Traders may initiate their intraday trade on this level. The stock or index should sustain above or below the pivot else you should exit the trade.

TREND

Trend is the level at which the tendency of stocks can be identified. For best results, you can use the 'trender' to trade. A 'weak' trend denoted by "DOWN" means that traders can trade with a negative bias. If the trend is 'strong', denoted by "UP", one can trade with a positive bias on the long side. Base price should be the pivot point price.

IF THE TREND IS UP

Ideally, for a buy position, buy at the pivot point and use S1 as the stop loss for a target of levels around R2 and higher.

IF THE TREND IS DOWN

Ideally, for a sell position, sell at the pivot point and use R1 as a stop loss and S2 or lower levels as a target level.

TRENDER + : This is a broad based technical trend of the stock prevalent, may or may not be necessarily for the day.

DAILY PROJECTED RANGE : Projected Daily high and low are indicative range for the day, if the price moves out of the range the trend in that side may accelerate and turn bullish or bearish.

THE TREND AND THE DAILY PROJECTED RANGE IS BASED ON CERTAIN SIMPLE CALCULATIONS WHICH IS PROVIDED BY BLOOMBERG, EXCLUSIVELY USED BY ANAND RATHI

Disclaimer-This report has been issued by Anand Rathi Share and Stock Brokers Limited (ARSSBL), which is regulated by SEBI. The information herein was obtained from various sources; we do not guarantee its accuracy or completeness. Neither the information nor any opinion expressed constitutes an offer, or an invitation to make an offer, to buy or sell any securities or any options, futures or other derivatives related to such securities ("related investments"). ARSSBL and its affiliates may trade for their own accounts as market maker / jobber and/or arbitrageur in any securities of this issuer(s) or in related investments, and may be on the opposite side of public orders. ARSSBL, its affiliates, directors, officers, and employees may have a long or short position in any securities of this issuer(s) or in related investments. ARSSBL or its affiliates may from time to time perform investment banking or other services for, or solicit investment banking or other business from, any entity mentioned in this report. This research report is prepared for private circulation. It does not have regard to the specific investment objectives, financial situation and the particular needs of any specific person who may receive this report. Investors should seek financial advice regarding the appropriateness of investing in any securities or investment strategies discussed or recommended in this report and should understand that statements regarding future prospects may not be realized. Investors should note that income from such securities, if any, may fluctuate and that each security's price or value may rise or fall. Past performance is not necessarily a guide to future performance. Foreign currency rates of exchange may adversely affect the value, price or income of any security or related investment mentioned in this report.

ANAND RATHI SHARE AND STOCK BROKERS LIMITED

4 th Floor , Silver Metropolis, Jaicoach Compound Opposite Bimbisar Nagar, Goregaon(East), Mumbai - 400063.

Tel No: +91 22 4001 3700 | Fax No: +91 22 4001 3770 | Website: www.rathi.com