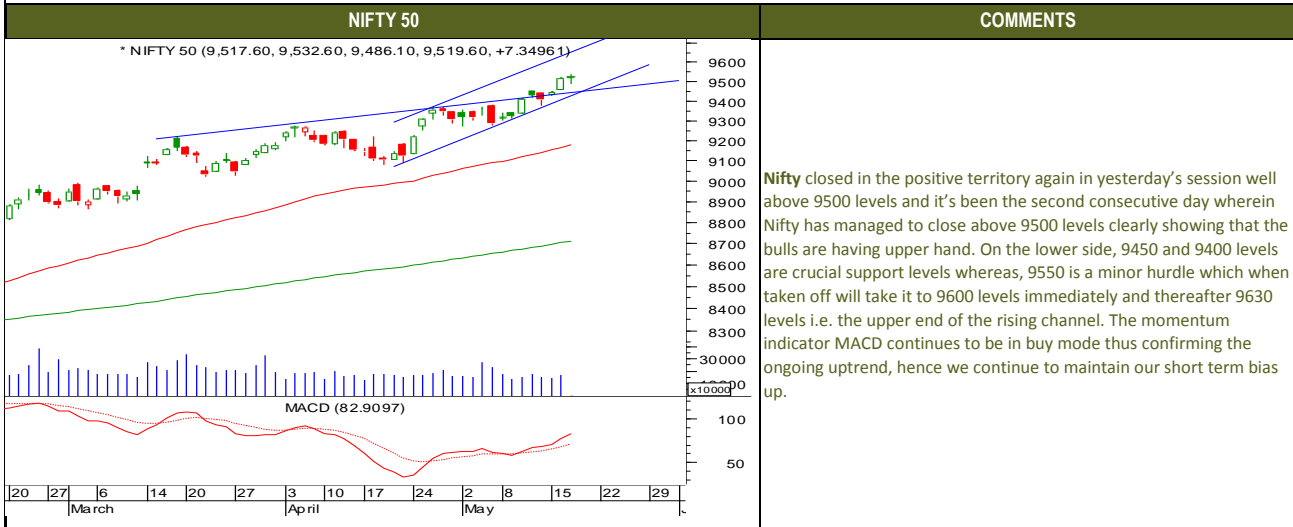
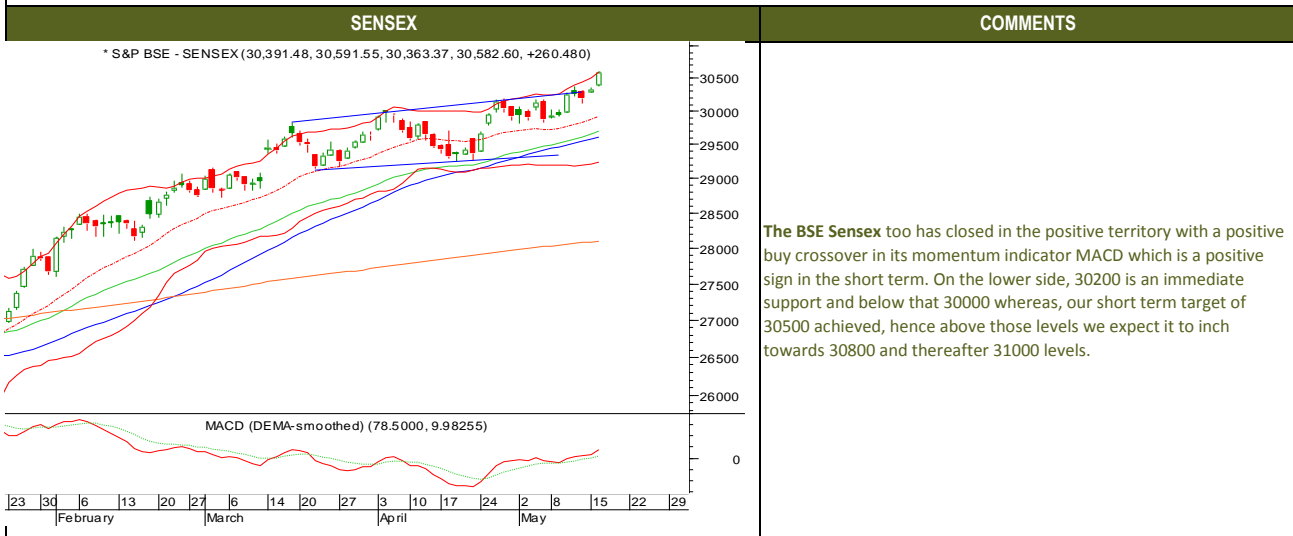




TECHNICALS



TECHNICALS





Thursday, May 18, 2017

TECHNICALS

BANK NIFTY	COMMENTS
<p>* NIFTY BANK (22,857.60, 22,944.10, 22,727.65, 22,928.60, +107.100)</p> <p>MACD (DEMA-smoothed) (71.6113, 96.6676)</p> <p>2017 9 16 23 30 6 13 20 27 6 14 20 27 3 10 17 24 2 8 15 22 29 February March April May</p>	<p>The Nifty bank has closed again in the negative territory in yesterday's session however it trading well above its crucial support levels, hence the bulls need not worry as of now. The immediate support exists at 22700 levels and thereafter 22400 levels which is the channel support. We continue to maintain our short term bias up for the target of 23000 initially and thereafter 23400 levels. The daily momentum indicator look a bit overbought and has gone into sell mode however the hourly has just come into buy again; hence we continue to maintain our bias up for the target of 23000 and thereafter 23400 levels.</p>



Thursday, May 18, 2017

INDIAN INDICES

INDICES	CLOSE	CHANGE	% CHG
SENSEX	30659	76.17	0.25
NIFTY	9526	13.50	0.14

TURNOVER & MARKET CAP

Rs. (Cr.)	YEST'DAY	PREV.DAY	% CHG
BSE Cash	4986	3472	43.61
NSE Cash	25763	24873	3.58
Derivatives(bn)	4880	3181	53.41

INSTITUTIONAL ACTIVITIES

DII Equity	-402	-66	511.05
FII Equity	858	235	264.72
FII F&O	-308	90	-443.98

ADVANCES & DECLINES

EXCHANGE	ADV	DECLINES	TOTAL
BSE	1270	1344	2614
NSE	693	961	1654

INDIAN ADR's

ADR	CLOSE	PREV.CLOSE	% CHG
Infosys	15.12	15.26	0.93
HDFC Bank	85.31	85.66	0.41
Wipro	10.27	10.44	1.66
ICICI Bank	9.45	9.64	2.01
Sterilite Inds.	22.70	22.80	0.44
Dr. Reddy's Lab	42.44	42.36	-0.19

SECTORAL INDICES

BSE			NSE		
INDICES	CLOSE	%	INDICES	CLOSE	%
CNX Bank	22936	0.03	BSE MIDcap	15077	-0.02
CNX IT	10437	-0.23	BSE SmallCap	15681	-0.18
CNX Realty	274	-0.16	BSE 200	4173	0.01
CNX FMCG	24267	-0.43	OTHER IMP.DATA		
CNX Infra	3304	0.33	10 Yr Gsec yield		
CNX Pharma	10223	-0.24	RS\$		
BSE Auto	23752	0.57	\$ Index		
BSE Metal	11529	2.37	Brent Crude (\$)		
CNX MNC	11802	-0.15	Gold (\$)		
BSE 500	13270	-0.02	Silver (\$)		
Nifty Midcap	4720	-0.15	PE		
BSE 100	9890	0.06	NIFTY		
			CURRENT AVG		
				22.1	19.7

TOP OUTPERFORMERS

SENSEX			NIFTY		
SYMBOL	CLOSE	%	SYMBOL	CLOSE	%
Tata Steel	493.4	7.95	TATA STEEL	###	###
Tata Motors	449.7	2.82	BHARTI INFRA TEL	###	###
ICICI Bank	309.8	2.35	TATA MOTORS	###	###
Jindal Steel	116.5	2.19	ICICI BANK	###	###
Tata power	85.4	1.79	TATA POWER	###	###

TOP UNDERPERFORMERS

SENSEX			NIFTY		
SYMBOL	CLOSE	%	SYMBOL	CLOSE	%
Wipro	506.1	-1.70	TECH MAHINDRA	###	###
Cipla/India	559.1	-0.94	ADANI PORTS & SPECIAL ECONOMIC Z	###	###
HDFC	1552.7	-0.89	IDFC	###	###
ITC	281.9	-0.56	AUROBINDO PHARMA	###	###
JP Asso.	12.4	-0.56	AMBUJA	###	###

BSE 500

TOP OUTPERFORMERS			TOP UNDERPERFORMERS		
SYMBOL	CLOSE	%	SYMBOL	CLOSE	%
Tata Steel Ltd	493.4	7.95	Edelweiss Financial Services Ltd	###	###
Ceat Ltd	1832.5	7.85	Shree Cement Ltd	###	###
Avanti Feeds Ltd	1303.6	7.76	Punjab National Bank	###	###
Caplin Point Laboratories Ltd	535.3	7.60	PNC Infracore Ltd	###	###
JBF Industries Ltd	292.2	6.60	Procter & Gamble Hygiene & Health Care L	###	###
NIIT Ltd	88.6	4.73	Symphony Ltd	###	###
Welspun Corp Ltd	94.3	4.66	Religare Enterprises Ltd	###	###
Sobha Ltd	429.6	4.28	Andhra Bank	###	###
HT Media Ltd	89.7	4.24	Network 18 Media & Investments Ltd	###	###
RattanIndia Power Ltd	8.8	3.92	Credit Analysis & Research Ltd	###	###
DCM Shriram Ltd	392.6	3.82	Vardhman Textiles Ltd	###	###
Just Dial Ltd	524.4	3.81	AstraZeneca Pharma India Ltd	###	###
Bharti Infracore Ltd	390.2	3.79	Majesco Ltd	###	###
South Indian Bank Ltd/The	26.2	3.76	Blue Dart Express Ltd	###	###
Monsanto India Ltd	2878.1	3.69	Inox Wind Ltd	###	###
Coromandel International Ltd	419.8	3.60	Gillette India Ltd	###	###
Sterilite Technologies Ltd	168.1	3.54	Future Retail Ltd	###	###
EIH Ltd	144.3	3.44	SpiceJet Ltd	###	###
Dilip Buildcon Ltd	491.5	3.35	EID Parry India Ltd	###	###
MRF Ltd	68087.6	3.18	Oracle Financial Services Software Ltd	###	###
Godrej Properties Ltd	529.1	3.10	Astral Polytechnik Ltd	###	###
Grindwell Norton Ltd	389.0	3.01	Hathway Cable & Datacom Ltd	###	###
Godfrey Phillips India Ltd	1286.3	2.93	Cummins India Ltd	###	###
ITD Cementation India Ltd	172.5	2.77	Chambal Fertilizers and Chemicals Ltd	###	###
Mangalore Refinery & Petrochem	135.1	2.74	Srei Infrastructure Finance Ltd	###	###



TRENDER+ OF NIFTY 50 STOCKS

SCRIP NAME	CLOSE	R 1	R 2	S 1	S 2	TRENDER+	PIVOT TABLE				
ACC Ltd	1694	1719	1744	1680	1665	UP					
Adani Ports & Special Economic Zones Ltd	349	353	358	346	343	Down					
Ambuja Cements Ltd	258	260	262	257	255	Down					
Asian Paints Ltd	1155	1164	1173	1141	1128	UP	HIGH	9533	30692	22978	10486
Aurobindo Pharma Ltd	607	619	631	600	593	Down	LOW	9486	30519	22830	10372
Axis Bank Ltd	503	507	511	499	494	UP	CLOSE	9526	30659	22936	10437
Bajaj Auto Ltd	3040	3058	3076	3011	2983	UP	PIVOT	9515	30623	22915	10432
Bank of Baroda	192	194	196	190	188	UP	R 1	9544	30728	22999	10491
Bharat Petroleum Corp Ltd	727	733	739	723	718	Down	R 2	9561	30797	23063	10546
Bharti Airtel Ltd	376	381	386	371	366	UP	S 1	9497	30554	22851	10377
Bharti Infratel Ltd	390	399	409	378	366	UP	S 2	9468	30450	22767	10317
Bosch Ltd	24191	24463	24734	24012	23833	UP					
Cipla Ltd/India	562	566	569	560	557	Down					
Coal India Ltd	276	278	279	275	273	Flat					
Dr Reddy's Laboratories Ltd	2737	2769	2801	2696	2654	UP					
Eicher Motors Ltd	29094	29272	29450	28943	28793	Down					
GAIL India Ltd	408	412	416	405	402	UP					
Grasim Industries Ltd	1171	1180	1190	1157	1143	UP					
HCL Technologies Ltd	854	859	863	845	837	UP					
HDFC Bank Ltd	1557	1565	1572	1551	1544	UP					
Hero MotoCorp Ltd	3646	3688	3731	3599	3553	UP					
Hindalco Industries Ltd	199	201	203	197	194	UP					
Hindustan Unilever Ltd	1009	1017	1025	996	983	UP					
Housing Development Finance Corp Ltd	1553	1566	1579	1545	1537	Down					
ICICI Bank Ltd	310	312	314	306	302	UP					
Indiabulls Housing Finance Ltd	1082	1087	1112	1059	1037	UP					
Indian Oil Corp Ltd	444	449	453	441	438	UP					
IndusInd Bank Ltd	1425	1443	1460	1414	1403	Flat					
Infosys Ltd	953	960	966	945	937	Down					
ITC Ltd	282	284	287	279	277	UP					
Kotak Mahindra Bank Ltd	951	961	970	944	936	Down					
Larsen & Toubro Ltd	1755	1769	1783	1736	1716	UP					
Lupin Ltd	1299	1308	1317	1289	1278	Flat					
Mahindra & Mahindra Ltd	1379	1389	1398	1365	1351	UP					
Maruti Suzuki India Ltd	6958	6996	7034	6903	6849	UP					
NTPC Ltd	159	161	163	158	156	Down					
Oil & Natural Gas Corp Ltd	185	186	188	183	182	Down					
Power Grid Corp of India Ltd	209	210	212	207	205	UP					
Reliance Industries Ltd	1353	1363	1374	1345	1337	Flat					
State Bank of India	308	309	311	306	304	UP					
Sun Pharmaceutical Industries Ltd	651	655	658	646	640	UP					
Tata Consultancy Services Ltd	2455	2470	2484	2432	2409	UP					
Tata Motors Ltd	271	274	276	266	262	UP					
Tata Motors Ltd	449	456	463	439	428	UP					
Tata Power Co Ltd/The	85	86	87	84	83	UP					
Tata Steel Ltd	494	507	519	473	453	UP					
Tech Mahindra Ltd	431	440	449	425	420	Down					
UltraTech Cement Ltd	4471	4489	4506	4454	4438	UP					
Wipro Ltd	511	516	522	507	503	UP					
Yes Bank Ltd	1455	1475	1496	1442	1430	Down					
Zee Entertainment Enterprises Ltd	524	528	532	518	512	UP					



Thursday, May 18, 2017

HOW TO TRADE USING THE TRENDER+

CLOSING PRICES

Closing price is the price at which scrip closes on the date mentioned in the report. Traders may initiate their intraday trade on this level. The stock or index should sustain above or below the pivot else you should exit the trade.

TREND

Trend is the level at which the tendency of stocks can be identified. For best results, you can use the 'trender' to trade. A 'weak' trend denoted by "DOWN" means that traders can trade with a negative bias. If the trend is 'strong', denoted by "UP", one can trade with a positive bias on the long side. Base price should be the pivot point price.

IF THE TREND IS UP

Ideally, for a buy position, buy at the pivot point and use S1 as the stop loss for a target of levels around R2 and higher.

IF THE TREND IS DOWN

Ideally, for a sell position, sell at the pivot point and use R1 as a stop loss and S2 or lower levels as a target level.

TRENDER + : This is a broad based technical trend of the stock prevalent, may or may not be necessarily for the day.

DAILY PROJECTED RANGE : Projected Daily high and low are indicative range for the day, if the price moves out of the range the trend in that side may accelerate and turn bullish or bearish.

THE TREND AND THE DAILY PROJECTED RANGE IS BASED ON CERTAIN SIMPLE CALCULATIONS WHICH IS PROVIDED BY BLOOMBERG, EXCLUSIVELY USED BY ANAND RATHI

Disclaimer—This report has been issued by Anand Rathi Share and Stock Brokers Limited (ARSSBL), which is regulated by SEBI. The information herein was obtained from various sources; we do not guarantee its accuracy or completeness. Neither the information nor any opinion expressed constitutes an offer, or an invitation to make an offer, to buy or sell any securities or any options, futures or other derivatives related to such securities ("related investments"). ARSSBL and its affiliates may trade for their own accounts as market maker / jobber and/or arbitrageur in any securities of this issuer(s) or in related investments, and may be on the opposite side of public orders. ARSSBL, its affiliates, directors, officers, and employees may have a long or short position in any securities of this issuer(s) or in related investments. ARSSBL or its affiliates may from time to time perform investment banking or other services for, or solicit investment banking or other business from, any entity mentioned in this report. This research report is prepared for private circulation. It does not have regard to the specific investment objectives, financial situation and the particular needs of any specific person who may receive this report. Investors should seek financial advice regarding the propriety of investing in any securities or investment strategies discussed or recommended in this report and should understand that statements regarding future prospects may not be realized. Investors should note that income from such securities, if any, may fluctuate and that each security's price or value may rise or fall. Past performance is not necessarily a guide to future performance. Foreign currency rates of exchange may adversely affect the value, price or income of any security or related investment mentioned in this report.

ANAND RATHI SHARE AND STOCK BROKERS LIMITED

4 th Floor , Silver Metropolis , Jaicoach Compound Opposite Bimbisar Nagar, Goregaon(East), Mumbai - 400063.

Tel No: +91 22 4001 3700 | Fax No: +91 22 4001 3770 | Website: www.rathi.com