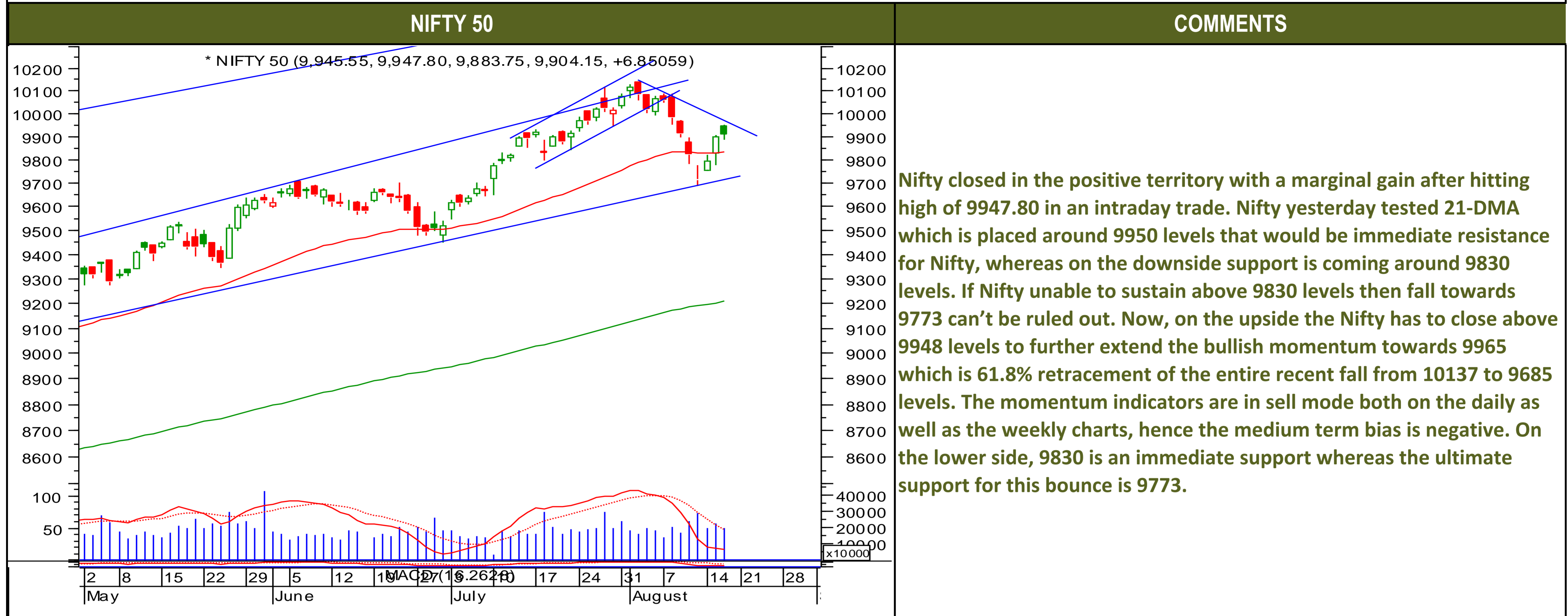




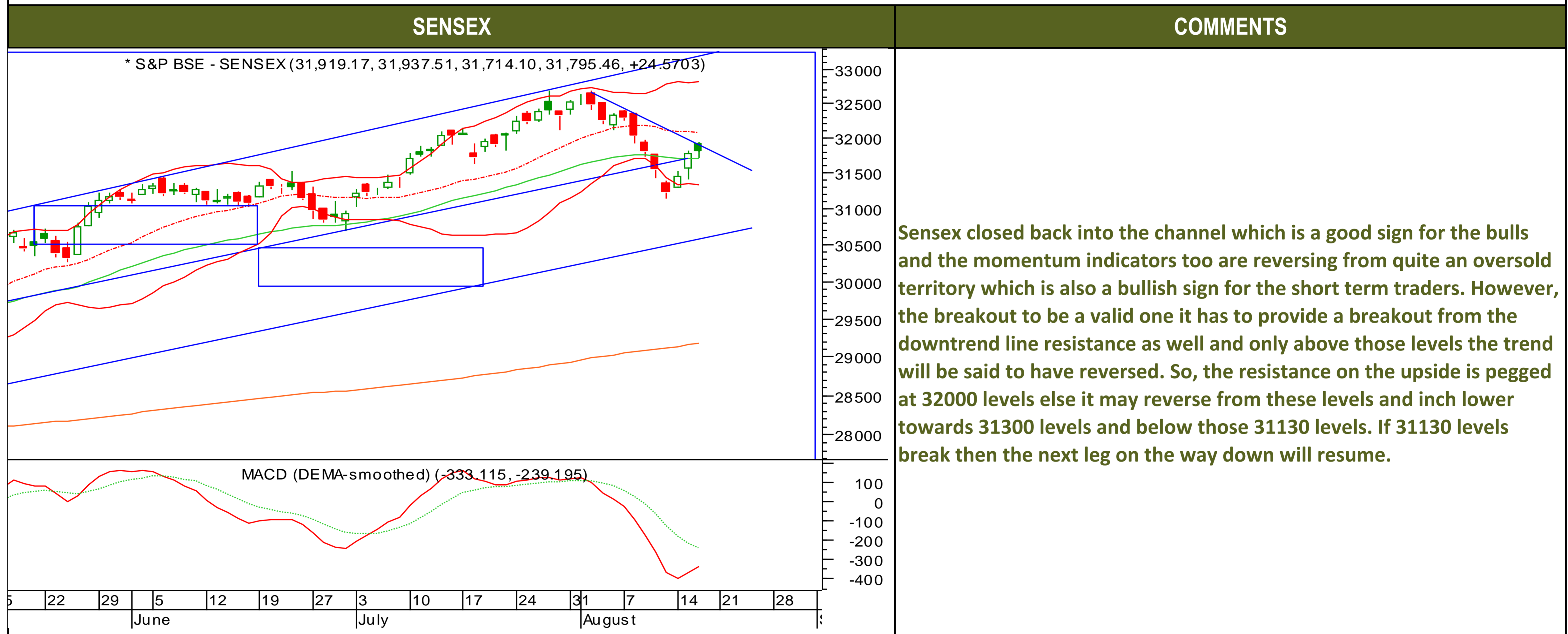
Friday, August 18, 2017

TECHNICALS



Friday, August 18, 2017

TECHNICALS



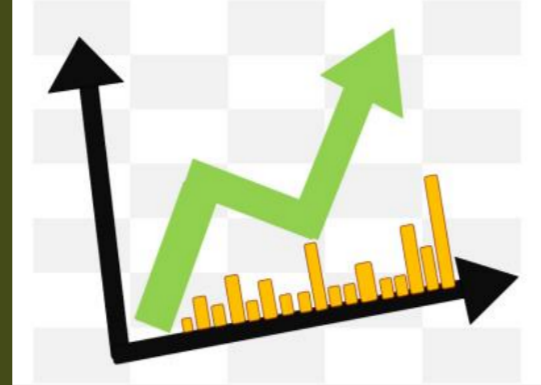


TECHNICALS

BANK NIFTY	COMMENTS
<p>* NIFTY BANK (24,495.20, 24,496.20, 24,121.55, 24,237.25, -200.449)</p> <p>MACD (DEMA-smoothed) (-285.105, -140.793)</p> <p>3 10 17 24 2 8 15 22 29 5 12 19 27 3 10 17 24 31 7 14 21 28 April May June July August</p>	<p>The Nifty bank underperformed yesterday and closed in the negative territory in the last trading session and yesterday's weakness likely to continue today as well. The Index has almost reached the neckline resistance of the bearish head and shoulders pattern, hence for the Index to provide a complete trend reversal has to close above 24600 levels else it quite near to complete its bounce back. The momentum indicators are still in sell mode on the daily and weekly charts which is a concern for the bulls. The supports in the near term are 23947 and 23600 whereas the resistances are pegged at 24520 and 24672 levels.</p>

TECHNICAL CALLS

: Rs.		
EXECUTION PRICE RANGE	STOP LOSS	TARGET
Buy Between Rs. To Rs.		



Friday, August 18, 2017

INDIAN INDICES

INDICES	CLOSE	CHANGE	% CHG
SENSEX	31795	24.57	0.08
NIFTY	9904	6.85	0.07

TURNOVER & MARKET CAP

Rs. (Cr.)	YEST'DAY	PREV.DAY	% CHG
BSE Cash	4402	3132	40.56
NSE Cash	24336	26122	-6.84
Derivatives(bn)	8500	3686	130.59

INSTITUTIONAL ACTIVITIES

DII Equity	1337	1619	-17.43
FII Equity	-1090	-1639	-33.48
FII F&O	-1714	1673	-202.49

ADVANCES & DECLINES

EXCHANGE	ADV	DECLINES	TOTAL
BSE	1402	1164	2566
NSE	923	721	1644

INDIAN ADR's

ADR	CLOSE	PREV.CLOSE	% CHG
Infosys	15.49	15.65	1.03
HDFC Bank	95.64	96.17	0.55
Wipro	6.13	6.09	-0.65
ICICI Bank	9.03	9.26	2.55
Sterlite Inds.	22.30	22.60	1.35
Dr. Reddy's Lab	30.77	30.95	0.58

SECTORAL INDICES

INDICES	BSE		NSE	
	CLOSE	%	INDICES	CLOSE
CNX Bank	24237	-0.82	BSE MIDcap	15229
CNX IT	10798	1.30	BSE SmallCap	15695
CNX Reality	274	0.57	BSE 200	4313
CNX FMCG	25511	-0.09	OTHER IMP. DATA	
CNX Infra	3322	0.31	10 Yr Gsec yield	6.53
CNX Pharma	8797	-0.70	RS/\$	64.15
BSE Auto	23814	-0.72	\$ Index	93.90
BSE Metal	13036	0.81	Brent Crude (\$)	50.24
CNX MNC	12939	-0.35	Gold (\$)	1285.47
BSE 500	13671	0.08	Silver (\$)	17.05
Nifty Midcap	4676	-0.35	PE	CURRENT AVG
BSE 100	10277	0.03	NIFTY	23.4
				19.7

TOP OUTPERFORMERS

SENSEX			NIFTY	
SYMBOL	CLOSE	%	SYMBOL	CLOSE
Infosys	1021.2	4.54	INFY	1020.9
Coal India	247.1	4.22	NTPC	176.8
NTPC	176.9	3.97	COAL INDIA	247.0
SESA Goa	304.8	3.97	IDEA	89.4
DLF	185.2	2.49	BHARTI	416.4

TOP UNDERPERFORMERS

SENSEX			NIFTY	
SYMBOL	CLOSE	%	SYMBOL	CLOSE
Cipla/India	573.4	-2.85	CIPLA	573.2
JP Asso.	23.5	-1.67	MARUTI	7582.5
Hindalco	230.3	-1.43	AUROBINDO PHARMA	703.5
Maruti	7606.8	-1.23	HINDALCO	230.3
Bajaj Auto	2820.7	-1.05	YES BANK	1738.1

BSE 500

TOP OUTPERFORMERS			TOP UNDERPERFORMERS	
SYMBOL	CLOSE	%	SYMBOL	CLOSE
Aban Offshore Ltd	185.1	13.63	Apollo Hospitals Enterprise Ltd	1100.3
GMR Infrastructure Ltd	18.6	13.41	Ramco Systems Ltd	344.6
Gujarat State Fertilizers & Chemicals Ltd	136.9	8.39	Unitech Ltd	7.7
BEML Ltd	1859.9	8.30	Inox Wind Ltd	107.7
Motilal Oswal Financial Services Ltd	1196.7	8.27	Ajanta Pharma Ltd	1213.6
Dilip Buildcon Ltd	563.6	6.74	Central Bank of India	72.5
Jai Corp Ltd	79.4	6.22	Religare Enterprises Ltd	67.8
Power Finance Corp Ltd	125.6	5.90	Cipla Ltd/India	573.4
Blue Star Ltd	738.0	5.68	Manappuram Finance Ltd	88.0
KEC International Ltd	302.1	5.17	Century Plyboards India Ltd	251.2
Hexaware Technologies Ltd	277.7	5.01	Emami Ltd	1090.7
Larsen & Toubro Infotech Ltd	777.7	4.84	Kaveri Seed Co Ltd	548.6
Radico Khaitan Ltd	168.7	4.75	Adani Power Ltd	28.8
Himachal Futuristic Communication Ltd	16.6	4.75	Motherson Sumi Systems Ltd	324.1
Infosys Ltd	1021.2	4.54	Mangalore Refinery & Petrochemicals Ltd	121.5
Rashtriya Chemicals & Fertilizers Ltd	98.5	4.46	Recco Home Finance Ltd	681.8
Bajaj Electricals Ltd	328.5	4.22	Himatsingka Seide Ltd	335.6
Coal India Ltd	247.1	4.22	Navkar Corp Ltd	191.8
Bharat Electronics Ltd	182.6	4.20	PVR Ltd	1302.2
NTPC Ltd	176.9	3.97	Housing Development & Infrastructure Ltd	61.3
Suven Life Sciences Ltd	163.8	3.97	Suzlon Energy Ltd	17.2
EID Parry India Ltd	334.7	3.90	Balkrishna Industries Ltd	1525.0
Shipping Corp of India Ltd	87.2	3.75	Caplin Point Laboratories Ltd	671.8
Bombay Dyeing & Manufacturing Co Ltd	78.7	3.69	JBF Industries Ltd	163.0
Godfrey Phillips India Ltd	1077.6	3.61	Aditya Birla Fashion and Retail Ltd	170.1



TRENDER+ OF NIFTY 50 STOCKS

SCRIP NAME	CLOSE	R 1	R 2	S 1	S 2	TRENDER+	PIVOT TABLE				
								NIFTY	SENSEX	BANK NIFTY	CNX IT
ACC Ltd	1780	1813	1846	1759	1739	UP					
Adani Ports & Special Economi	389	398	406	384	380	Down					
Ambuja Cements Ltd	271	274	277	269	266	UP					
Asian Paints Ltd	1135	1141	1147	1130	1126	Down	HIGH	9948	31938	24496	10840
Aurobindo Pharma Ltd	704	719	734	694	685	Down	LOW	9884	31714	24122	10689
Axis Bank Ltd	497	502	507	494	490	UP	CLOSE	9904	31795	24237	10798
Bajaj Auto Ltd	2826	2857	2889	2805	2785	Flat	PIVOT	9912	31816	24285	10776
Bank of Baroda	148	151	155	146	143	Flat	R 1	9940	31917	24448	10862
Bharat Petroleum Corp Ltd	494	505	517	481	469	UP	R 2	9976	32039	24660	10927
Bharti Airtel Ltd	416	422	428	408	400	Flat	S 1	9876	31694	24074	10711
Bharti Infratel Ltd	379	386	392	376	372	Down	S 2	9848	31592	23910	10624
Bosch Ltd	22038	22359	22679	21859	21679	Down					
Cipla Ltd/India	573	588	603	564	555	UP					
Coal India Ltd	247	252	257	240	232	Flat					
Dr Reddy's Laboratories Ltd	2011	2031	2051	1992	1972	Flat					
Eicher Motors Ltd	30928	31142	31356	30666	30403	UP					
GAIL India Ltd	376	379	383	372	367	UP					
Grasim Industries Ltd	1101	1109	1116	1093	1085	UP					
HCL Technologies Ltd	871	877	883	863	855	Flat					
HDFC Bank Ltd	1765	1780	1794	1752	1740	UP					
Hero MotoCorp Ltd	3998	4032	4067	3970	3941	UP					
Hindalco Industries Ltd	230	237	244	226	221	UP					
Hindustan Unilever Ltd	1177	1187	1196	1167	1156	UP					
Housing Development Finance	1759	1777	1794	1731	1703	UP					
ICICI Bank Ltd	293	297	301	290	288	Flat					
Indiabulls Housing Finance Ltd	1200	1215	1230	1190	1179	UP					
Indian Oil Corp Ltd	426	430	433	423	420	UP					
IndusInd Bank Ltd	1629	1647	1665	1614	1599	Down					
Infosys Ltd	1021	1034	1047	1003	985	UP					
ITC Ltd	280	283	285	278	275	UP					
Kotak Mahindra Bank Ltd	989	1001	1012	980	970	Down					
Larsen & Toubro Ltd	1134	1150	1167	1124	1115	Down					
Lupin Ltd	954	965	975	947	940	Flat					
Mahindra & Mahindra Ltd	1367	1375	1383	1359	1351	UP					
Maruti Suzuki India Ltd	7582	7673	7763	7529	7475	Down					
NTPC Ltd	177	180	183	172	166	UP					
Oil & Natural Gas Corp Ltd	161	162	162	160	159	Down					
Power Grid Corp of India Ltd	219	221	223	218	217	Down					
Reliance Industries Ltd	1567	1589	1612	1553	1539	Down					
State Bank of India	281	284	287	279	277	UP					
Sun Pharmaceutical Industries	488	492	496	482	477	UP					
Tata Consultancy Services Ltd	2486	2506	2527	2464	2441	Down					
Tata Motors Ltd	229	233	237	226	224	Flat					
Tata Motors Ltd	385	390	395	382	379	Flat					
Tata Power Co Ltd/The	82	82	83	81	81	UP					
Tata Steel Ltd	625	634	642	621	616	UP					
Tech Mahindra Ltd	424	429	434	421	417	UP					
UltraTech Cement Ltd	3930	3976	4022	3901	3871	Down					
Wipro Ltd	288	290	292	287	286	Down					
Yes Bank Ltd	1738	1768	1799	1719	1699	Down					
Zee Entertainment Enterprises	527	535	543	514	501	UP					



HOW TO TRADE USING THE TRENDER+

CLOSING PRICES

Closing price is the price at which scrip closes on the date mentioned in the report. Traders may initiate their intraday trade on this level. The stock or index should sustain above or below the pivot else you should exit the trade.

TREND

Trend is the level at which the tendency of stocks can be identified. For best results, you can use the 'trender' to trade. A 'weak' trend denoted by "DOWN" means that traders can trade with a negative bias. If the trend is 'strong', denoted by "UP", one can trade with a positive bias on the long side. Base price should be the pivot point price.

IF THE TREND IS UP

Ideally, for a buy position, buy at the pivot point and use S1 as the stop loss for a target of levels around R2 and higher.

IF THE TREND IS DOWN

Ideally, for a sell position, sell at the pivot point and use R1 as a stop loss and S2 or lower levels as a target level.

TRENDER + : This is a broad based technical trend of the stock prevalent, may or may not be necessarily for the day.

DAILY PROJECTED RANGE : Projected Daily high and low are indicative range for the day, if the price moves out of the range the trend in that side may accelerate and turn bullish or bearish.

THE TREND AND THE DAILY PROJECTED RANGE IS BASED ON CERTAIN SIMPLE CALCULATIONS WHICH IS PROVIDED BY BLOOMBERG, EXCLUSIVELY USED BY ANAND RATHI

Disclaimer-This report has been issued by Anand Rathi Share and Stock Brokers Limited (ARSSBL), which is regulated by SEBI. The information herein was obtained from various sources; we do not guarantee its accuracy or completeness. Neither the information nor any opinion expressed constitutes an offer, or an invitation to make an offer, to buy or sell any securities or any options, futures or other derivatives related to such securities ("related investments"). ARSSBL and its affiliates may trade for their own accounts as market maker / jobber and/or arbitrageur in any securities of this issuer(s) or in related investments, and may be on the opposite side of public orders. ARSSBL, its affiliates, directors, officers, and employees may have a long or short position in any securities of this issuer(s) or in related investments. ARSSBL or its affiliates may from time to time perform investment banking or other services for, or solicit investment banking or other business from, any entity mentioned in this report. This research report is prepared for private circulation. It does not have regard to the specific investment objectives, financial situation and the particular needs of any specific person who may receive this report. Investors should seek financial advice regarding the appropriateness of investing in any securities or investment strategies discussed or recommended in this report and should understand that statements regarding future prospects may not be realized. Investors should note that income from such securities, if any, may fluctuate and that each security's price or value may rise or fall. Past performance is not necessarily a guide to future performance. Foreign currency rates of exchange may adversely affect the value, price or income of any security or related investment mentioned in this report.

ANAND RATHI SHARE AND STOCK BROKERS LIMITED

4 th Floor , Silver Metropolis, Jaicoach Compound Opposite Bimbisar Nagar, Goregaon(East), Mumbai - 400063.

Tel No: +91 22 4001 3700 | Fax No: +91 22 4001 3770 | Website: www.rathi.com