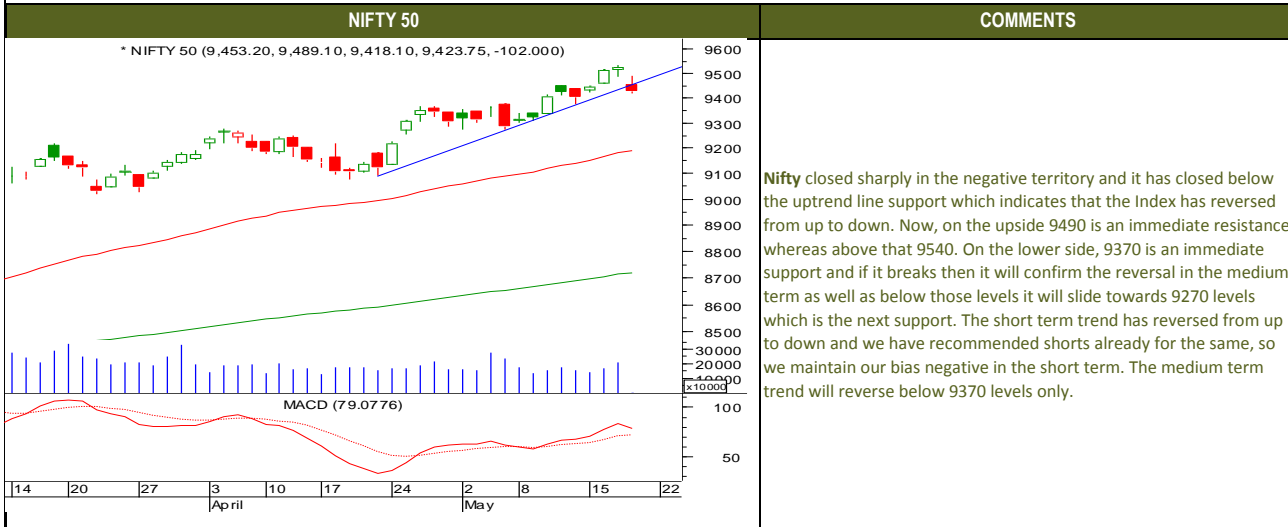
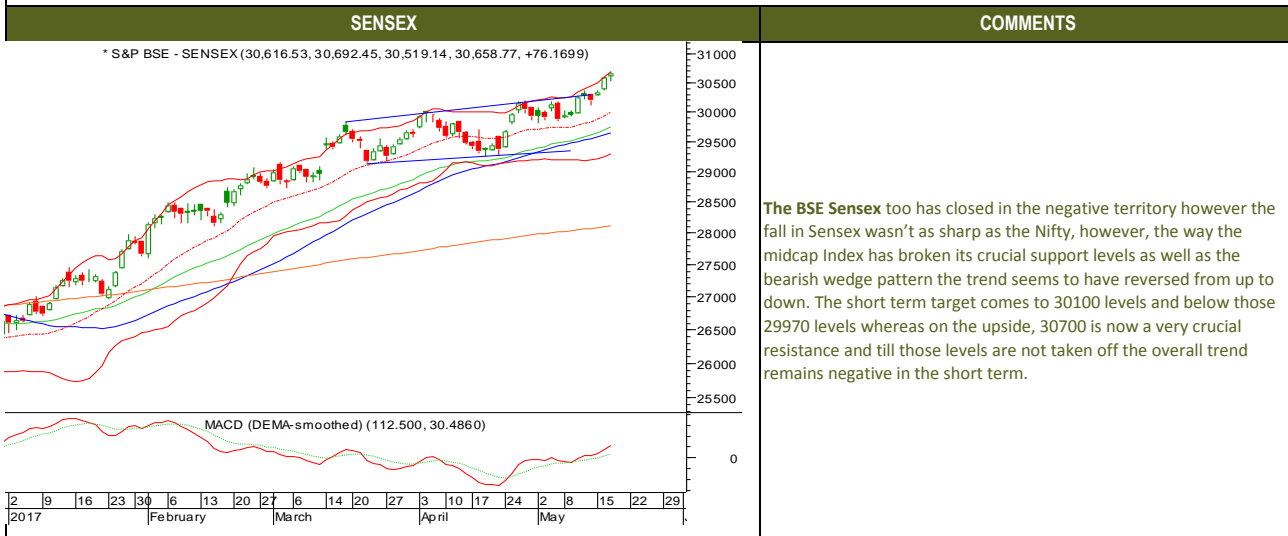




### TECHNICALS



### TECHNICALS





### TECHNICALS

BANK NIFTY	COMMENTS
<p>* NIFTY BANK (22,972.35, 22,978.15, 22,830.10, 22,935.95, +7.34961)</p> <p>MACD (DEMA-smoothed) (59.6895, 89.2720)</p> <p>2017 9 16 23 30 6 13 20 27 3 10 17 24 2 8 15 22 29</p> <p>February March April May</p>	<p>The Nifty bank too closed in the negative territory and it clearly indicates that it is heading towards 22550 levels and below that 22200 levels. The momentum indicators have gone into sell mode which is another signal of a reversal as well, hence we continue to maintain our bias negative on Nifty Bank till 29900 and 23000 resistance zones is not taken off.</p>

### TECHNICAL CALLS

: Rs.		
EXECUTION PRICE RANGE	STOP LOSS	TARGET
Buy Between Rs. To Rs.		



Friday, May 19, 2017

### INDIAN INDICES

INDICES	CLOSE	CHANGE	% CHG
SENSEX	30435	-223.98	-0.73
NIFTY	9429	-96.30	-1.01

### TURNOVER & MARKET CAP

Rs. (Cr.)	YEST'DAY	PREV.DAY	% CHG
BSE Cash	6808	4986	36.55
NSE Cash	28168	25763	9.33
Derivatives(bn)	4423	4880	-9.36

### INSTITUTIONAL ACTIVITIES

DII Equity	615	-402	-252.91
FII Equity	-731	858	-185.21
FII F&O	-116	-308	-62.52

### ADVANCES & DECLINES

EXCHANGE	ADV	DECLINES	TOTAL
BSE	678	1531	2209
NSE	327	1359	1686

### INDIAN ADR's

ADR	CLOSE	PREV.CLOSE	% CHG
Infosys	15.26	14.89	-2.42
HDFC Bank	85.66	84.43	-1.44
Wipro	10.44	10.25	-1.82
ICICI Bank	9.64	9.50	-1.45
Sterilite Inds.	22.80	21.75	-4.61
Dr. Reddy's Lab	42.36	41.82	-1.27

### SECTORAL INDICES

BSE			NSE		
INDICES	CLOSE	%	INDICES	CLOSE	%
CNX Bank	22699	-1.03	BSE MIDcap	14751	-2.16
CNX IT	10546	1.04	BSE SmallCap	15362	-2.04
CNX Realty	265	-3.27	BSE 200	4116	-1.36
CNX FMCG	23864	-1.66	OTHER IMP.DATA		
CNX Infra	3244	-1.83	10 Yr Gsec yield		
CNX Pharma	10160	-0.61	RS\$		
BSE Auto	23280	-1.98	\$ Index		
BSE Metal	11211	-2.76	Brent Crude (\$)		
CNX MNC	11567	-1.98	Gold (\$)		
BSE 500	13086	-1.39	Silver (\$)		
Nifty Midcap	4582	-1.98	PE		
BSE 100	9768	-1.23	CURRENT AVG		
			NIFTY	22.0	19.7

### TOP OUTPERFORMERS

SENSEX			NIFTY		
SYMBOL	CLOSE	%	SYMBOL	CLOSE	%
JP Asso.	13.0	4.42	TCS	###	###
Wipro	523.6	3.47	WIPRO	###	###
TCS	2534.1	3.38	INFY	###	###
Infosys	961.7	1.00	LUPIN	###	###
Sun Pharma	653.9	0.51	SUNPHARMA	###	###

### TOP UNDERPERFORMERS

SENSEX			NIFTY		
SYMBOL	CLOSE	%	SYMBOL	CLOSE	%
SESA Goa	231.2	-4.60	YES BANK	###	###
BHEL	164.6	-3.69	IDFC	###	###
DLF	207.7	-3.13	ULTRATECHCEM	###	###
Jindal Steel	113.4	-2.66	BHARTI INFRATEL	###	###
Tata Motors	438.2	-2.55	EICHER MOTORS	###	###

### BSE 500

TOP OUTPERFORMERS			TOP UNDERPERFORMERS		
SYMBOL	CLOSE	%	SYMBOL	CLOSE	%
Avanti Feeds Ltd	1381.0	5.94	CESC Ltd	###	###
Caplin Point Laboratories Ltd	559.9	4.61	IDBI Bank Ltd	###	###
Jaiprakash Associates Ltd	13.0	4.42	JSW Steel Ltd	###	###
Cummins India Ltd	1052.6	3.45	Bharat Financial Inclusion Ltd	###	###
Tata Consultancy Services Ltd	2534.1	3.38	Bharat Forge Ltd	###	###
Hindustan Copper Ltd	68.6	2.77	Multi Commodity Exchange of India Ltd	###	###
Triveni Turbine Ltd	141.5	2.39	Syndicate Bank	###	###
Polaris Consulting & Services Ltd/It	222.6	2.25	Indian Overseas Bank	###	###
Sunteck Realty Ltd	448.3	2.14	IRB Infrastructure Developers Ltd	###	###
LA Opala RG Ltd	534.0	2.09	Torrent Power Ltd	###	###
Bliss Gvs Pharma Ltd	180.3	2.01	Jai Corp Ltd	###	###
Vardhman Textiles Ltd	1287.6	1.85	India Cements Ltd/The	###	###
Dilip Buildcon Ltd	499.8	1.69	Future Retail Ltd	###	###
Hexaware Technologies Ltd	255.1	1.55	Allahabad Bank	###	###
Gateway Distriparks Ltd	249.0	1.51	Housing Development & Infrastructure Ltd	###	###
Symphony Ltd	1444.5	1.28	Sterilite Technologies Ltd	###	###
ITD Cementation India Ltd	174.6	1.25	Raymond Ltd	###	###
Manpasand Beverages Ltd	796.0	1.18	Bajaj Electricals Ltd	###	###
Alkem Laboratories Ltd	1920.3	1.07	Fortis Healthcare Ltd	###	###
Infosys Ltd	961.7	1.00	Vedanta Ltd	###	###
Mangalore Refinery & Petrochem	136.4	0.93	Network 18 Media & Investments Ltd	###	###
Supreme Industries Ltd	1197.2	0.84	Welspun Corp Ltd	###	###
Ceat Ltd	1845.1	0.69	JSW Energy Ltd	###	###
Lupin Ltd	1304.9	0.61	DEN Networks Ltd	###	###
WABCO India Ltd	5906.4	0.60	Magma Fincorp Ltd	###	###



### TRENDER+ OF NIFTY 50 STOCKS

SCRIP NAME	CLOSE	R 1	R 2	S 1	S 2	TRENDER+	PIVOT TABLE				
ACC Ltd	1670	1686	1701	1660	1649	UP					
Adani Ports & Special Economic Zones Ltd	348	358	367	340	333	Down					
Ambuja Cements Ltd	252	255	258	250	248	Down					
Asian Paints Ltd	1151	1161	1170	1141	1131	UP	HIGH	9489	30576	22835	10706
Aurobindo Pharma Ltd	601	609	618	595	589	Down	LOW	9418	30394	22660	10372
Axis Bank Ltd	492	497	503	488	485	UP	CLOSE	9429	30435	22699	10546
Bajaj Auto Ltd	2973	3017	3060	2946	2918	Down	PIVOT	9446	30468	22731	10541
Bank of Baroda	187	194	201	183	179	Down	R 1	9473	30543	22802	10710
Bharat Petroleum Corp Ltd	715	725	734	708	701	Down	R 2	9517	30650	22905	10875
Bharti Airtel Ltd	371	379	387	366	361	UP	S 1	9402	30360	22628	10376
Bharti Infratel Ltd	379	386	393	374	370	UP	S 2	9375	30286	22557	10207
Bosch Ltd	23264	24205	25145	22412	21560	Down					
Cipla Ltd/India	560	564	569	556	552	Down					
Coal India Ltd	276	278	280	275	273	Down					
Dr Reddy's Laboratories Ltd	2679	2708	2738	2661	2643	Down					
Eicher Motors Ltd	28357	28833	29309	28047	27737	Down					
GAIL India Ltd	405	409	413	401	398	UP					
Grasim Industries Ltd	1130	1162	1193	1109	1088	Down					
HCL Technologies Ltd	848	866	883	838	827	Down					
HDFC Bank Ltd	1557	1563	1569	1550	1542	UP					
Hero MotoCorp Ltd	3592	3628	3665	3566	3541	UP					
Hindalco Industries Ltd	194	196	199	192	190	UP					
Hindustan Unilever Ltd	990	1005	1020	979	968	Down					
Housing Development Finance Corp Ltd	1537	1555	1573	1523	1509	Down					
ICICI Bank Ltd	308	312	317	304	300	UP					
Indiabulls Housing Finance Ltd	1054	1075	1095	1039	1024	Down					
Indian Oil Corp Ltd	440	444	448	437	435	Down					
IndusInd Bank Ltd	1407	1423	1440	1389	1372	Down					
Infosys Ltd	962	976	991	945	928	UP					
ITC Ltd	278	280	283	276	275	UP					
Kotak Mahindra Bank Ltd	943	952	961	934	926	Down					
Larsen & Toubro Ltd	1723	1743	1763	1709	1696	Down					
Lupin Ltd	1306	1324	1342	1286	1266	Flat					
Mahindra & Mahindra Ltd	1353	1367	1382	1343	1333	UP					
Maruti Suzuki India Ltd	6831	6915	6998	6781	6731	Down					
NTPC Ltd	158	159	160	157	156	Down					
Oil & Natural Gas Corp Ltd	181	183	186	179	178	Down					
Power Grid Corp of India Ltd	208	209	211	207	206	UP					
Reliance Industries Ltd	1327	1344	1360	1318	1308	Down					
State Bank of India	303	307	310	301	298	UP					
Sun Pharmaceutical Industries Ltd	654	658	663	647	639	UP					
Tata Consultancy Services Ltd	2536	2591	2647	2462	2387	UP					
Tata Motors Ltd	285	289	294	274	268	Down					
Tata Motors Ltd	438	446	454	433	428	Flat					
Tata Power Co Ltd/The	84	85	86	83	82	Down					
Tata Steel Ltd	486	494	502	481	476	UP					
Tech Mahindra Ltd	422	436	450	414	406	Down					
UltraTech Cement Ltd	4341	4419	4497	4295	4248	Down					
Wipro Ltd	525	534	542	512	498	UP					
Yes Bank Ltd	1401	1432	1464	1381	1362	Down					
Zee Entertainment Enterprises Ltd	516	523	531	511	506	UP					



Friday, May 19, 2017

## HOW TO TRADE USING THE TRENDER+

## CLOSING PRICES

Closing price is the price at which scrip closes on the date mentioned in the report. Traders may initiate their intraday trade on this level. The stock or index should sustain above or below the pivot else you should exit the trade.

## TREND

Trend is the level at which the tendency of stocks can be identified. For best results, you can use the 'trender' to trade. A 'weak' trend denoted by "DOWN" means that traders can trade with a negative bias. If the trend is 'strong', denoted by "UP", one can trade with a positive bias on the long side. Base price should be the pivot point price.

## IF THE TREND IS UP

Ideally, for a buy position, buy at the pivot point and use S1 as the stop loss for a target of levels around R2 and higher.

## IF THE TREND IS DOWN

Ideally, for a sell position, sell at the pivot point and use R1 as a stop loss and S2 or lower levels as a target level.

**TRENDER + :** This is a broad based technical trend of the stock prevalent, may or may not be necessarily for the day.

**DAILY PROJECTED RANGE :** Projected Daily high and low are indicative range for the day, if the price moves out of the range the trend in that side may accelerate and turn bullish or bearish.

**THE TREND AND THE DAILY PROJECTED RANGE IS BASED ON CERTAIN SIMPLE CALCULATIONS WHICH IS PROVIDED BY BLOOMBERG, EXCLUSIVELY USED BY ANAND RATHI**

Disclaimer—This report has been issued by Anand Rathi Share and Stock Brokers Limited (ARSSBL), which is regulated by SEBI. The information herein was obtained from various sources; we do not guarantee its accuracy or completeness. Neither the information nor any opinion expressed constitutes an offer, or an invitation to make an offer, to buy or sell any securities or any options, futures or other derivatives related to such securities ("related investments"). ARSSBL and its affiliates may trade for their own accounts as market maker / jobber and/or arbitrageur in any securities of this issuer(s) or in related investments, and may be on the opposite side of public orders. ARSSBL, its affiliates, directors, officers, and employees may have a long or short position in any securities of this issuer(s) or in related investments. ARSSBL or its affiliates may from time to time perform investment banking or other services for, or solicit investment banking or other business from, any entity mentioned in this report. This research report is prepared for private circulation. It does not have regard to the specific investment objectives, financial situation and the particular needs of any specific person who may receive this report. Investors should seek financial advice regarding the propriety of investing in any securities or investment strategies discussed or recommended in this report and should understand that statements regarding future prospects may not be realized. Investors should note that income from such securities, if any, may fluctuate and that each security's price or value may rise or fall. Past performance is not necessarily a guide to future performance. Foreign currency rates of exchange may adversely affect the value, price or income of any security or related investment mentioned in this report.

**ANAND RATHI SHARE AND STOCK BROKERS LIMITED**

4 th Floor , Silver Metropolis , Jaicoach Compound Opposite Bimbisar Nagar, Goregaon(East), Mumbai - 400063.

Tel No: +91 22 4001 3700 | Fax No: +91 22 4001 3770 | Website: www.rathi.com