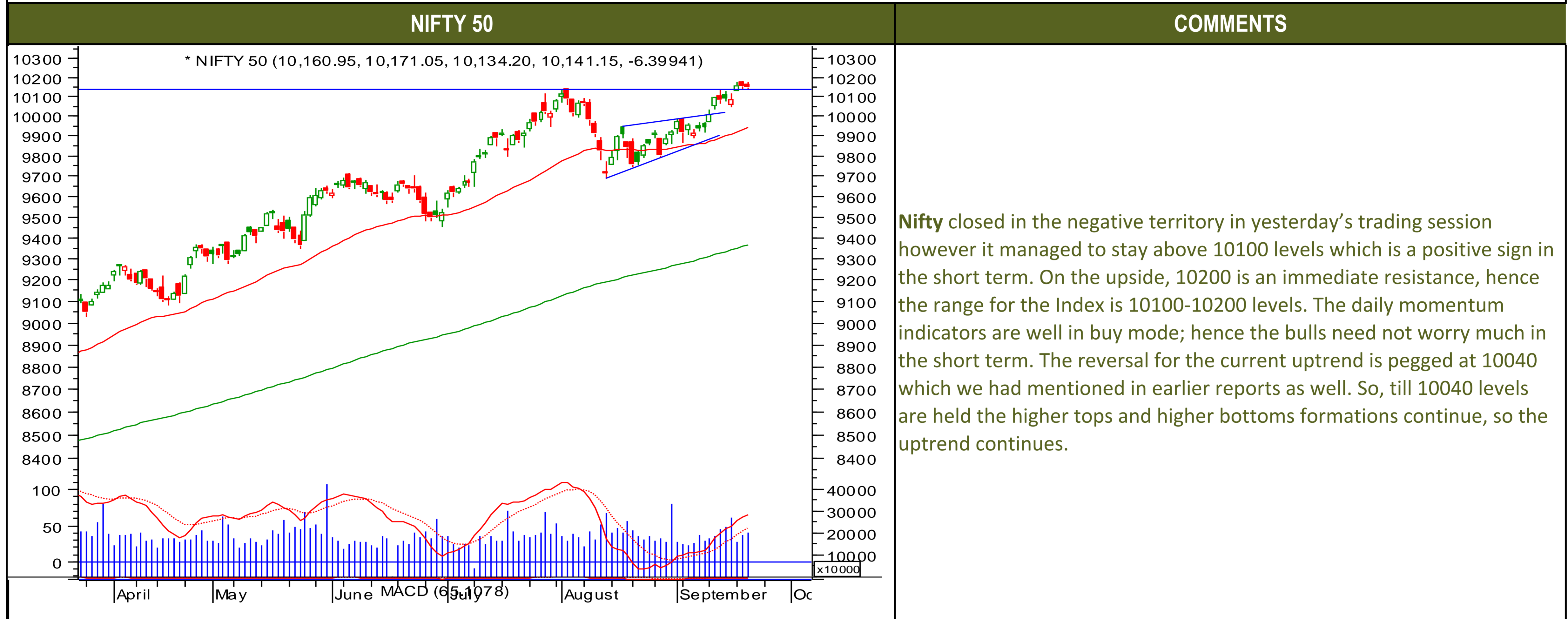




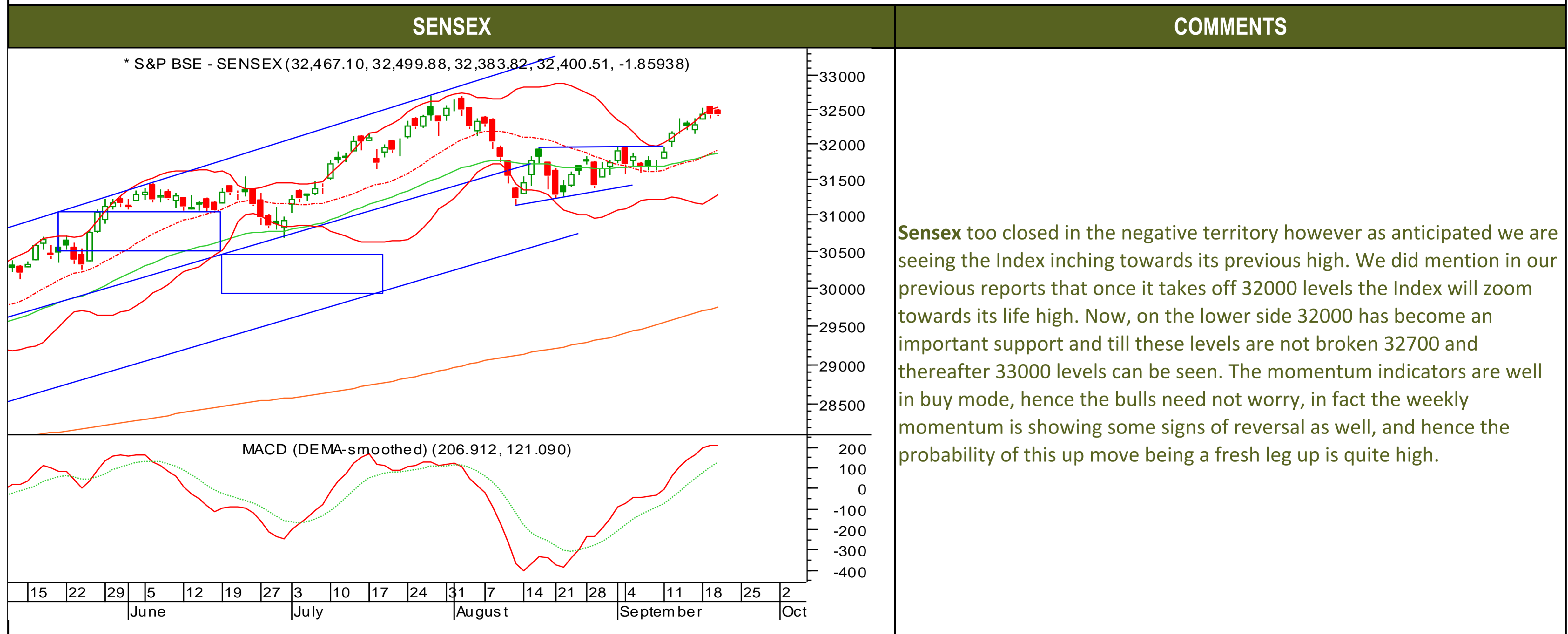
Thursday, September 21, 2017

TECHNICALS



Thursday, September 21, 2017

TECHNICALS





TECHNICALS

BANK NIFTY		COMMENTS
<p>* NIFTY BANK (24,984.65, 25,052.60, 24,938.30, 24,965.05, -76.5000)</p>		<p>The Nifty bank closed in negative territory in yesterday's trading session however till the weekly momentum indicator doesn't come into buy mode, a strong move on the upside can't be expected. On the lower side, 24800 is an immediate support and till these levels are held 25200 is quite possible in this weekly expiry. Now, the traders are advised to initiate bull call spread by buying 25100 call option and sell 25200 call option for this weekly expiry. Now, if 24800 levels break then 24500 levels can't be ruled out whereas of 25200 levels are taken off then 25500 will come soon.</p>
<p>MACD (DEMA-smoothed) (155.469, 82.2209)</p>		
<p>19 27 3 10 17 24 31 7 14 21 28 4 11 18 25 2</p> <p>July August September October</p>		



Thursday, September 21, 2017

INDIAN INDICES

INDICES	CLOSE	CHANGE	% CHG
SENSEX	32401	-1.86	-0.01
NIFTY	10141	-6.40	-0.06

TURNOVER & MARKET CAP

Rs. (Cr.)	YEST'DAY	PREV.DAY	% CHG
BSE Cash	5069	7704	-34.20
NSE Cash	29143	28632	1.78
Derivatives(bn)	4312	3806	13.27

INSTITUTIONAL ACTIVITIES

DII Equity	946	-78	-1318.11
FII Equity	-1185	-1720	-31.06
FII F&O	457	-596	-176.69

ADVANCES & DECLINES

EXCHANGE	ADV	DECLINES	TOTAL
BSE	1229	1378	2607
NSE	794	893	1687

INDIAN ADR's

ADR	CLOSE	PREV.CLOSE	% CHG
Infosys	14.80	14.84	0.27
HDFC Bank	99.96	98.21	-1.75
Wipro	5.65	5.63	-0.35
ICICI Bank	8.99	8.93	-0.67
Sterlite Inds.	23.05	23.35	1.30
Dr. Reddy's Lab	34.56	35.68	3.24

SECTORAL INDICES

BSE			NSE		
INDICES	CLOSE	%	INDICES	CLOSE	%
CNX Bank	24965	-0.31	BSE MIDcap	16099	-0.07
CNX IT	10651	-0.03	BSE SmallCap	16871	-0.14
CNX Reality	290	-0.53	BSE 200	4452	-0.12
CNX FMCG	25699	0.20	OTHER IMP. DATA		
CNX Infra	3410	0.00	10 Yr Gsec yield	6.58	
CNX Pharma	9320	0.28	RS/\$	64.27	
BSE Auto	24768	-0.69	\$ Index	92.56	
BSE Metal	13982	-0.03	Brent Crude (\$)	56.14	
CNX MNC	13656	-0.47	Gold (\$)	1299.71	
BSE 500	14158	-0.14	Silver (\$)	17.11	
Nifty Midcap	4969	-0.47	PE	CURRENT AVG	
BSE 100	10570	-0.09	NIFTY	23.9	19.7

TOP OUTPERFORMERS

SENSEX			NIFTY	
SYMBOL	CLOSE	%	SYMBOL	CLOSE
JP Asso.	18.7	5.37	YES BANK	1880.1
Tata Steel	687.7	1.64	DR REDDYS	2314.7
ITC	271.2	1.27	BANK OF BARODA	148.4
SBI	270.6	1.27	TATA STEEL	687.7
Wipro	291.8	0.99	ITC	271.6

TOP UNDERPERFORMERS

SENSEX			NIFTY	
SYMBOL	CLOSE	%	SYMBOL	CLOSE
Hero Motocorp	3858.1	-2.29	IDEA	80.2
Tata Motors	415.5	-1.98	TATA MOTORS	414.8
Sun Pharma	506.5	-1.96	SUNPHARMA	505.5
HUL	1258.7	-1.66	AMBUJA	279.9
ICICI Bank	290.8	-1.21	ACC	1786.1

BSE 500

TOP OUTPERFORMERS			TOP UNDERPERFORMERS	
SYMBOL	CLOSE	%	SYMBOL	CLOSE
Yes Bank Ltd	1878.6	403.96	TAKE Solutions Ltd	158.7
ISGEC Heavy Engineering Ltd	6907.0	9.35	Swan Energy Ltd	148.8
Divi's Laboratories Ltd	942.8	9.13	Himachal Futuristic Communications Ltd	32.5
Westlife Development Ltd	257.4	8.15	Religare Enterprises Ltd	43.1
Titagarh Wagons Ltd	125.9	7.06	Jyothy Laboratories Ltd	414.5
JK Tyre & Industries Ltd	157.7	6.74	Info Edge India Ltd	1092.4
Future Consumer Ltd	64.6	6.60	Majesco Ltd	435.8
Marksans Pharma Ltd	46.0	5.63	Schneider Electric Infrastructure Ltd	138.3
NIIT Technologies Ltd	532.6	5.39	Linde India Ltd	391.1
Jaiprakash Associates Ltd	18.7	5.37	Trent Ltd	300.6
Tamil Nadu Newsprint & Papers Ltd	373.1	5.26	Sundram Fasteners Ltd	448.0
Karnataka Bank Ltd/The	163.0	5.16	Idea Cellular Ltd	80.2
Aban Offshore Ltd	188.1	4.97	Prestige Estates Projects Ltd	271.3
Bombay Dyeing & Manufacturing Co	202.8	4.89	Himatsingka Seide Ltd	347.0
Intellect Design Arena Ltd	128.6	4.73	Whirlpool of India Ltd	1280.1
Unitech Ltd	7.3	4.56	OnMobile Global Ltd	58.5
Reliance Power Ltd	45.6	3.76	Dewan Housing Finance Corp Ltd	591.5
MMTC Ltd	62.5	3.57	BEML Ltd	1874.9
Dr Reddy's Laboratories Ltd	2313.6	3.33	Reliance Naval and Engineering Ltd	57.3
SKF India Ltd	1590.5	3.32	Gujarat State Fertilizers & Chemicals Ltd	141.6
VST Industries Ltd	2855.0	3.14	City Union Bank Ltd	164.8
DCM Shriram Ltd	462.5	2.91	India Cements Ltd/The	185.2
TVS Srichakra Ltd	3214.6	2.88	Edelweiss Financial Services Ltd	271.4
TV Today Network Ltd	337.5	2.66	J Kumar Infraprojects Ltd	227.2
Suven Life Sciences Ltd	183.5	2.63	Gujarat Mineral Development Corp Ltd	145.7



Thursday, September 21, 2017

TRENDER+ OF NIFTY 50 STOCKS

SCRIP NAME	CLOSE	R 1	R 2	S 1	S 2	TRENDER+	PIVOT TABLE				
ACC Ltd	1786	1815	1843	1768	1750	UP					
Adani Ports & Special Economi	410	413	416	406	403	UP					
Ambuja Cements Ltd	280	284	289	277	274	Down					
Asian Paints Ltd	1237	1251	1265	1229	1221	Down	HIGH	NIFTY	SENSEX	BANK NIFTY	CNX IT
Aurobindo Pharma Ltd	746	754	763	737	729	Down	LOW	10134	32384	24938	10588
Axis Bank Ltd	519	522	525	517	514	UP	CLOSE	10141	32401	24965	10651
Bajaj Auto Ltd	3091	3112	3134	3077	3063	UP	PIVOT	10149	32428	24985	10645
Bank of Baroda	148	152	155	144	141	UP	R 1	10163	32472	25032	10701
Bharat Petroleum Corp Ltd	494	503	512	489	483	Down	R 2	10186	32544	25100	10750
Bharti Airtel Ltd	397	407	417	379	361	Flat	S 1	10127	32356	24918	10595
Bharti Infratel Ltd	394	399	404	391	388	UP	S 2	10112	32312	24871	10539
Bosch Ltd	21823	21915	22006	21739	21654	Down					
Cipla Ltd/India	570	574	578	565	561	UP					
Coal India Ltd	257	259	262	254	251	Down					
Dr Reddy's Laboratories Ltd	2315	2349	2384	2260	2206	UP					
Eicher Motors Ltd	32444	32626	32808	32281	32118	UP					
GAIL India Ltd	417	424	431	413	409	UP					
Grasim Industries Ltd	1221	1232	1243	1212	1203	Down					
HCL Technologies Ltd	889	896	902	884	879	Down					
HDFC Bank Ltd	1849	1858	1868	1842	1836	UP					
Hero MotoCorp Ltd	3856	3928	4000	3815	3773	Down					
Hindalco Industries Ltd	244	248	252	241	238	UP					
Hindustan Unilever Ltd	1259	1275	1292	1249	1239	Down					
Housing Development Finance	1767	1777	1786	1752	1736	Flat					
ICICI Bank Ltd	291	292	294	289	288	Down					
Indiabulls Housing Finance Ltd	1311	1322	1334	1301	1292	UP					
Indian Oil Corp Ltd	414	418	423	411	408	Down					
IndusInd Bank Ltd	1726	1748	1769	1714	1701	Down					
Infosys Ltd	913	917	922	908	903	UP					
ITC Ltd	272	273	275	269	266	UP					
Kotak Mahindra Bank Ltd	1023	1033	1044	1017	1010	UP					
Larsen & Toubro Ltd	1236	1248	1261	1226	1216	UP					
Lupin Ltd	1002	1009	1016	996	990	Down					
Mahindra & Mahindra Ltd	1292	1303	1313	1286	1279	UP					
Maruti Suzuki India Ltd	8120	8153	8187	8098	8076	UP					
NTPC Ltd	168	169	171	167	165	Down					
Oil & Natural Gas Corp Ltd	168	171	174	165	161	UP					
Power Grid Corp of India Ltd	213	215	218	212	210	Down					
Reliance Industries Ltd	847	865	882	837	828	UP					
State Bank of India	270	272	274	268	265	UP					
Sun Pharmaceutical Industries	506	515	525	500	494	UP					
Tata Consultancy Services Ltd	2494	2514	2534	2474	2454	Down					
Tata Motors Ltd	239	242	245	237	235	UP					
Tata Motors Ltd	415	421	427	411	407	UP					
Tata Power Co Ltd/The	84	86	87	83	82	Down					
Tata Steel Ltd	688	695	702	677	667	UP					
Tech Mahindra Ltd	449	451	453	446	443	UP					
UltraTech Cement Ltd	4210	4235	4260	4169	4129	UP					
Wipro Ltd	292	294	296	288	284	Flat					
Yes Bank Ltd	376	378	380	373	370	UP					
Zee Entertainment Enterprises	549	552	555	544	539	UP					



HOW TO TRADE USING THE TRENDER+

CLOSING PRICES

Closing price is the price at which scrip closes on the date mentioned in the report. Traders may initiate their intraday trade on this level. The stock or index should sustain above or below the pivot else you should exit the trade.

TREND

Trend is the level at which the tendency of stocks can be identified. For best results, you can use the 'trender' to trade. A 'weak' trend denoted by "DOWN" means that traders can trade with a negative bias. If the trend is 'strong', denoted by "UP", one can trade with a positive bias on the long side. Base price should be the pivot point price.

IF THE TREND IS UP

Ideally, for a buy position, buy at the pivot point and use S1 as the stop loss for a target of levels around R2 and higher.

IF THE TREND IS DOWN

Ideally, for a sell position, sell at the pivot point and use R1 as a stop loss and S2 or lower levels as a target level.

TRENDER + : This is a broad based technical trend of the stock prevalent, may or may not be necessarily for the day.

DAILY PROJECTED RANGE : Projected Daily high and low are indicative range for the day, if the price moves out of the range the trend in that side may accelerate and turn bullish or bearish.

THE TREND AND THE DAILY PROJECTED RANGE IS BASED ON CERTAIN SIMPLE CALCULATIONS WHICH IS PROVIDED BY BLOOMBERG, EXCLUSIVELY USED BY ANAND RATHI

Disclaimer-This report has been issued by Anand Rathi Share and Stock Brokers Limited (ARSSBL), which is regulated by SEBI. The information herein was obtained from various sources; we do not guarantee its accuracy or completeness. Neither the information nor any opinion expressed constitutes an offer, or an invitation to make an offer, to buy or sell any securities or any options, futures or other derivatives related to such securities ("related investments"). ARSSBL and its affiliates may trade for their own accounts as market maker / jobber and/or arbitrageur in any securities of this issuer(s) or in related investments, and may be on the opposite side of public orders. ARSSBL, its affiliates, directors, officers, and employees may have a long or short position in any securities of this issuer(s) or in related investments. ARSSBL or its affiliates may from time to time perform investment banking or other services for, or solicit investment banking or other business from, any entity mentioned in this report. This research report is prepared for private circulation. It does not have regard to the specific investment objectives, financial situation and the particular needs of any specific person who may receive this report. Investors should seek financial advice regarding the appropriateness of investing in any securities or investment strategies discussed or recommended in this report and should understand that statements regarding future prospects may not be realized. Investors should note that income from such securities, if any, may fluctuate and that each security's price or value may rise or fall. Past performance is not necessarily a guide to future performance. Foreign currency rates of exchange may adversely affect the value, price or income of any security or related investment mentioned in this report.

ANAND RATHI SHARE AND STOCK BROKERS LIMITED

4 th Floor , Silver Metropolis, Jaicoach Compound Opposite Bimbisar Nagar, Goregaon(East), Mumbai - 400063.

Tel No: +91 22 4001 3700 | Fax No: +91 22 4001 3770 | Website: www.rathi.com