



Thursday, November 23, 2017

TECHNICALS

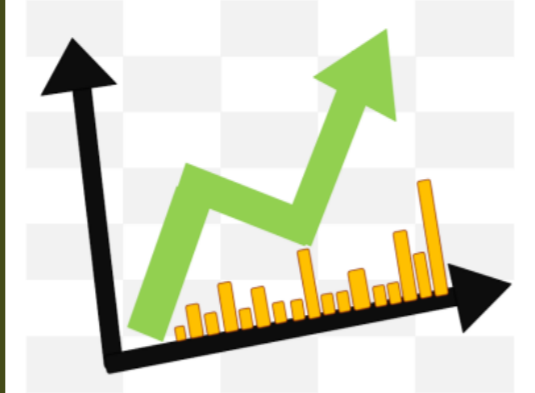
NIFTY 50	COMMENTS
<p>* NIFTY 50 (10,350.80, 10,368.70, 10,309.55, 10,342.30, +15.3994)</p>	<p>Nifty closed in the positive in last trading session but the momentum indicator is still in the sell mode on the daily charts. The Index has taken a halt at the 61.8% retracement level of the entire fall from 10490 to 10094 levels which is quite an important level as now till these levels are not taken off and till it doesn't close above 61.8% retracement levels then this can be just a corrective bounce, hence the Index traders should be cautious a these levels till 10354 levels aren't taken off and closed above that. On the lower side, 10200 is now a very crucial support, so till those levels are held we can see a consolidation within a range of 10200- 10354 levels. If 10200 levels are broken then the bears will have an upper hand and below 10200 levels 10000 is quite likely. So, the short term traders should trade using the above range.</p>



Thursday, November 23, 2017

TECHNICALS

SENSEX	COMMENTS
<p>* NIFTY 50 (10,350.80, 10,368.70, 10,309.55, 10,342.30, +15.3994)</p>	<p>Nifty closed in the positive in last trading session but the momentum indicator is still in the sell mode on the daily charts. The Index has taken a halt at the 61.8% retracement level of the entire fall from 10490 to 10094 levels which is quite an important level as now till these levels are not taken off and till it doesn't close above 61.8% retracement levels then this can be just a corrective bounce, hence the Index traders should be cautious a these levels till 10354 levels aren't taken off and closed above that. On the lower side, 10200 is now a very crucial support, so till those levels are held we can see a consolidation within a range of 10200- 10354 levels. If 10200 levels are broken then the bears will have an upper hand and below 10200 levels 10000 is quite likely. So, the short term traders should trade using the above range.</p>

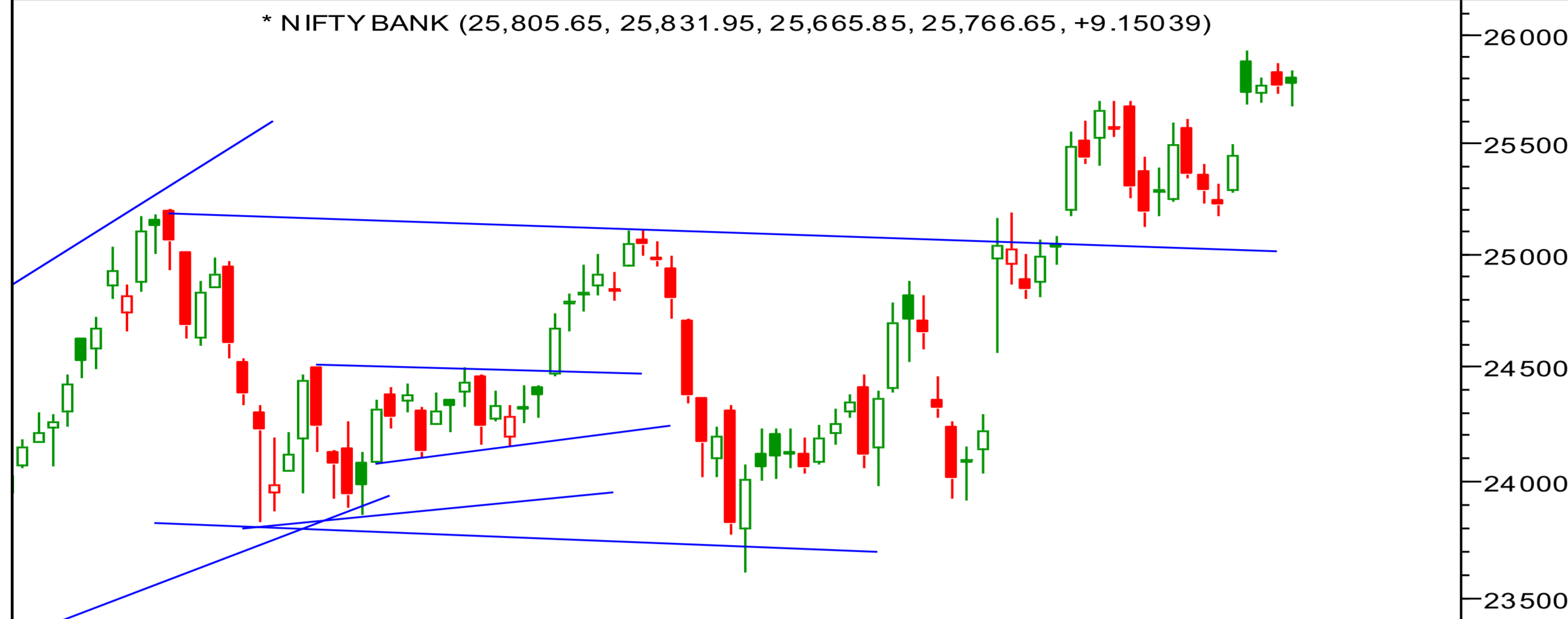


TECHNICALS

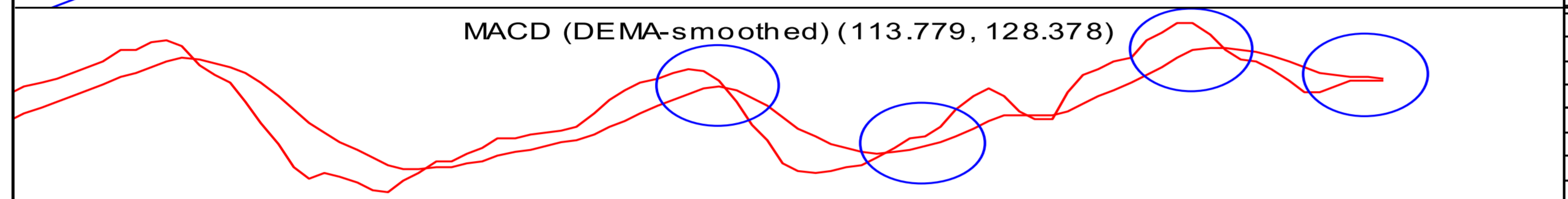
BANK NIFTY

COMMENTS

* NIFTY BANK (25,805.65, 25,831.95, 25,665.85, 25,766.65, +9.15039)

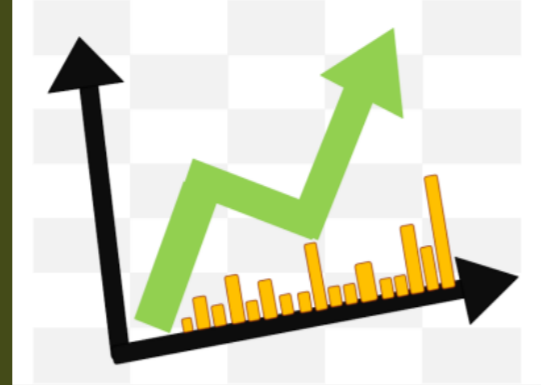


MACD (DEMA-smoothed) (113.779, 128.378)



7 24 31 7 14 21 28 4 11 18 25 3 9 16 23 30 6 13 20 27 4
August September October November December

The Nifty bank closed in positive territory in last trading session but still the momentum indicators are in sell mode which is still a concern for the bulls. The Index is trading above the bullish flag pattern which we have been saying since couple of weeks now. We had mentioned that the Index was trading within a range of 25050 to 25700 and the range was likely to break on the upside. It has happened as anticipated. Now, on the lower side, 25500 is an immediate support and till those levels aren't broken 26700 which is our medium term target is quite likely. The Index has a short term resistance at 26000 levels wherein we have also seen highest call options OI, hence the short term traders can buy above 26000 levels only for the immediate target of 26200 and thereafter 26500 levels and till these levels aren't taken off or broken we can see some consolidation within a range of 25500-26000 levels.



Thursday, November 23, 2017

INDIAN INDICES

INDICES	CLOSE	CHANGE	% CHG
SENSEX	33562	83.20	0.25
NIFTY	10342	15.40	0.15

TURNOVER & MARKET CAP

Rs. (Cr.)	YEST'DAY	PREV.DAY	% CHG
BSE Cash	4826	3572	35.09
NSE Cash	29865	33644	-11.23
Derivatives(bn)	4956	3693	34.19

INSTITUTIONAL ACTIVITIES

DII Equity	826	613	34.67
FII Equity	-727	-359	102.66
FII F&O	-810	-1243	-34.82

ADVANCES & DECLINES

EXCHANGE	ADV	DECLINES	TOTAL
BSE	1296	1243	2539
NSE	814	919	1733

INDIAN ADR's

ADR	CLOSE	PREV.CLOSE	% CHG
Infosys	15.08	15.12	0.27
HDFC Bank	96.52	96.68	0.17
Wipro	5.33	5.34	0.19
ICICI Bank	9.62	9.73	1.14
Sterlite Inds.	24.20	24.35	0.62
Dr. Reddy's Lab	35.28	36.80	4.31

SECTORAL INDICES

BSE			NSE		
INDICES	CLOSE	%	INDICES	CLOSE	%
CNX Bank	25767	0.04	BSE MIDcap	16785	-0.05
CNX IT	11118	-0.02	BSE SmallCap	17853	0.23
CNX Reality	317	0.27	BSE 200	4556	0.05
CNX FMCG	25797	0.36	OTHER IMP. DATA		
CNX Infra	3527	-0.10	10 Yr Gsec yield	6.97	
CNX Pharma	9278	-0.73	RS/\$	64.94	
BSE Auto	25291	0.30	\$ Index	93.85	
BSE Metal	14364	-0.66	Brent Crude (\$)	63.16	
CNX MNC	13714	0.07	Gold (\$)	1282.84	
BSE 500	14550	0.11	Silver (\$)	16.99	
Nifty Midcap	5188	0.07	PE	CURRENT AVG	
BSE 100	10801	0.08	NIFTY	24.1	19.7

TOP OUTPERFORMERS

SENSEX			NIFTY	
SYMBOL	CLOSE	%	SYMBOL	CLOSE
JP Asso.	19.3	2.93	Zee Entertainment Enterprises Ltd.	562.1
HDFC	1718.3	1.53	ADANI PORTS & SPECIAL ECONOMIC ZO	414.5
BHEL	88.8	1.43	GRASIM	1194.2
SBI	335.2	1.43	GAIL	469.1
Maruti	8514.3	1.08	ULTRATECHCEM	4230.4

TOP UNDERPERFORMERS

SENSEX			NIFTY	
SYMBOL	CLOSE	%	SYMBOL	CLOSE
DLF	219.9	-1.21	IDEA	98.5
Hindalco	258.3	-1.20	AUROBINDO PHARMA	698.4
SESA Goa	309.5	-1.10	HINDALCO	257.8
Bharti Airtel	498.7	-0.88	DR REDDYS	2360.7
NTPC	181.7	-0.74	INDUSIND	1627.4

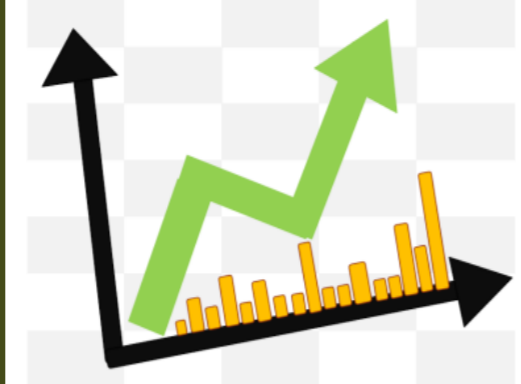
BSE 500

TOP OUTPERFORMERS			TOP UNDERPERFORMERS	
SYMBOL	CLOSE	%	SYMBOL	CLOSE
Jai Corp Ltd	158.2	16.16	Videocon Industries Ltd	12.6
VIP Industries Ltd	344.9	11.73	Indiabulls Real Estate Ltd	213.1
Future Retail Ltd	573.8	11.68	Phoenix Mills Ltd/The	484.8
Gujarat Pipavav Port Ltd	150.4	7.39	Fortis Healthcare Ltd	125.1
Relaxo Footwears Ltd	612.4	7.23	Minda Industries Ltd	1100.6
Radico Khaitan Ltd	299.5	6.77	DEN Networks Ltd	90.3
Ashoka Buildcon Ltd	228.4	6.65	GHCL Ltd	256.7
BF Utilities Ltd	524.1	6.38	Religare Enterprises Ltd	49.0
Jyothy Laboratories Ltd	367.6	6.12	CCL Products India Ltd	305.6
Rain Industries Ltd	318.8	4.99	Sequent Scientific Ltd	96.6
Majesco Ltd	522.3	4.63	Wockhardt Ltd	720.5
Unitech Ltd	6.5	4.54	Biocon Ltd	408.6
Dilip Buildcon Ltd	888.9	4.20	Shoppers Stop Ltd	532.3
Sadbhav Engineering Ltd	354.2	4.15	Himachal Futuristic Communications Ltd	27.0
Swan Energy Ltd	187.6	4.11	Gujarat Fluorochemicals Ltd	842.8
Zee Entertainment Enterprises Ltd	562.1	4.10	Birla Corp Ltd	1088.1
Reliance Communications Ltd	14.0	4.09	Balrampur Chini Mills Ltd	159.2
HeidelbergCement India Ltd	165.1	4.03	Bata India Ltd	749.3
Prestige Estates Projects Ltd	319.4	3.85	Tech Mahindra Ltd	482.9
United Breweries Ltd	1111.2	3.78	Motherson Sumi Systems Ltd	344.8
Indoco Remedies Ltd	279.9	3.67	Idea Cellular Ltd	98.6
RattanIndia Power Ltd	9.0	3.58	Bombay Dyeing & Manufacturing Co Ltd	198.0
Godrej Properties Ltd	730.0	3.53	Westlife Development Ltd	288.7
Oberoi Realty Ltd	508.8	3.43	Amara Raja Batteries Ltd	787.0
Sun Pharma Advanced Research C	418.8	3.37	Chambal Fertilizers and Chemicals Ltd	146.1



TRENDER+ OF NIFTY 50 STOCKS

SCRIP NAME	CLOSE	R 1	R 2	S 1	S 2	TRENDER+	PIVOT TABLE				
ACC Ltd	1722	1735	1748	1708	1694	UP					
Adani Ports & Special Economi	415	420	426	405	396	Flat					
Ambuja Cements Ltd	266	268	270	263	260	Down					
Asian Paints Ltd	1174	1182	1190	1161	1147	UP	HIGH	NIFTY	SENSEX	BANK NIFTY	CNX IT
Aurobindo Pharma Ltd	698	709	719	691	683	Down	LOW	10310	33465	25666	11099
Axis Bank Ltd	541	545	550	537	534	UP	CLOSE	10342	33562	25767	11118
Bajaj Auto Ltd	3313	3338	3364	3298	3282	UP	PIVOT	10340	33560	25755	11128
Bank of Baroda	181	184	187	177	174	Down	R 1	10371	33656	25844	11157
Bharat Petroleum Corp Ltd	508	514	519	503	498	Flat	R 2	10399	33750	25921	11197
Bharti Airtel Ltd	499	506	513	494	489	Flat	S 1	10312	33466	25678	11088
Bharti Infratel Ltd	376	384	391	371	366	Down	S 2	10281	33371	25589	11059
Bosch Ltd	19009	19268	19528	18860	18711	Down					
Cipla Ltd/India	619	625	631	614	608	UP					
Coal India Ltd	272	275	279	270	268	Down					
Dr Reddy's Laboratories Ltd	2361	2385	2409	2336	2312	Flat					
Eicher Motors Ltd	30178	30469	30760	30011	29844	Down					
GAIL India Ltd	469	474	479	460	452	UP					
Grasim Industries Ltd	1194	1210	1225	1173	1153	Flat					
HCL Technologies Ltd	842	846	850	836	830	Down					
HDFC Bank Ltd	1855	1862	1869	1847	1838	UP					
Hero MotoCorp Ltd	3661	3699	3737	3634	3607	Flat					
Hindalco Industries Ltd	258	262	267	255	252	UP					
Hindustan Unilever Ltd	1270	1277	1284	1264	1257	Down					
Housing Development Finance	1718	1731	1744	1699	1680	UP					
ICICI Bank Ltd	319	321	324	317	316	Down					
Indiabulls Housing Finance Ltd	1179	1190	1202	1164	1150	Down					
Indian Oil Corp Ltd	396	399	403	392	389	Flat					
IndusInd Bank Ltd	1627	1654	1680	1611	1595	Down					
Infosys Ltd	966	970	975	963	959	Down					
ITC Ltd	258	259	261	256	254	UP					
Kotak Mahindra Bank Ltd	1026	1035	1043	1018	1011	Down					
Larsen & Toubro Ltd	1223	1231	1240	1215	1206	Down					
Lupin Ltd	827	838	848	821	815	Down					
Mahindra & Mahindra Ltd	1430	1441	1453	1419	1408	UP					
Maruti Suzuki India Ltd	8513	8544	8575	8463	8413	UP					
NTPC Ltd	182	184	187	180	179	UP					
Oil & Natural Gas Corp Ltd	181	183	184	180	179	Flat					
Power Grid Corp of India Ltd	207	208	210	205	204	Down					
Reliance Industries Ltd	931	938	946	923	916	UP					
State Bank of India	335	341	347	328	321	UP					
Sun Pharmaceutical Industries	535	543	551	529	522	UP					
Tata Consultancy Services Ltd	2681	2703	2725	2665	2650	Down					
Tata Motors Ltd	244	246	248	242	240	UP					
Tata Motors Ltd	429	433	437	424	420	Flat					
Tata Power Co Ltd/The	93	94	95	91	89	UP					
Tata Steel Ltd	711	717	722	706	701	UP					
Tech Mahindra Ltd	483	493	503	476	470	Down					
UltraTech Cement Ltd	4230	4257	4284	4185	4141	Flat					
Wipro Ltd	294	296	297	293	292	Down					
Yes Bank Ltd	310	315	320	306	302	Flat					
Zee Entertainment Enterprises	562	571	580	548	534	UP					



HOW TO TRADE USING THE TRENDER+

CLOSING PRICES

Closing price is the price at which scrip closes on the date mentioned in the report. Traders may initiate their intraday trade on this level. The stock or index should sustain above or below the pivot else you should exit the trade.

TREND

Trend is the level at which the tendency of stocks can be identified. For best results, you can use the 'trender' to trade. A 'weak' trend denoted by "DOWN" means that traders can trade with a negative bias. If the trend is 'strong', denoted by "UP", one can trade with a positive bias on the long side. Base price should be the pivot point price.

IF THE TREND IS UP

Ideally, for a buy position, buy at the pivot point and use S1 as the stop loss for a target of levels around R2 and higher.

IF THE TREND IS DOWN

Ideally, for a sell position, sell at the pivot point and use R1 as a stop loss and S2 or lower levels as a target level.

TRENDER + : This is a broad based technical trend of the stock prevalent, may or may not be necessarily for the day.

DAILY PROJECTED RANGE : Projected Daily high and low are indicative range for the day, if the price moves out of the range the trend in that side may accelerate and turn bullish or bearish.

THE TREND AND THE DAILY PROJECTED RANGE IS BASED ON CERTAIN SIMPLE CALCULATIONS WHICH IS PROVIDED BY BLOOMBERG, EXCLUSIVELY USED BY ANAND RATHI

Disclaimer-This report has been issued by Anand Rathi Share and Stock Brokers Limited (ARSSBL), which is regulated by SEBI. The information herein was obtained from various sources; we do not guarantee its accuracy or completeness. Neither the information nor any opinion expressed constitutes an offer, or an invitation to make an offer, to buy or sell any securities or any options, futures or other derivatives related to such securities ("related investments"). ARSSBL and its affiliates may trade for their own accounts as market maker / jobber and/or arbitrageur in any securities of this issuer(s) or in related investments, and may be on the opposite side of public orders. ARSSBL, its affiliates, directors, officers, and employees may have a long or short position in any securities of this issuer(s) or in related investments. ARSSBL or its affiliates may from time to time perform investment banking or other services for, or solicit investment banking or other business from, any entity mentioned in this report. This research report is prepared for private circulation. It does not have regard to the specific investment objectives, financial situation and the particular needs of any specific person who may receive this report. Investors should seek financial advice regarding the appropriateness of investing in any securities or investment strategies discussed or recommended in this report and should understand that statements regarding future prospects may not be realized. Investors should note that income from such securities, if any, may fluctuate and that each security's price or value may rise or fall. Past performance is not necessarily a guide to future performance. Foreign currency rates of exchange may adversely affect the value, price or income of any security or related investment mentioned in this report.

ANAND RATHI SHARE AND STOCK BROKERS LIMITED

4 th Floor , Silver Metropolis, Jaicoach Compound Opposite Bimbisar Nagar, Goregaon(East), Mumbai - 400063.

Tel No: +91 22 4001 3700 | Fax No: +91 22 4001 3770 | Website: www.rathi.com