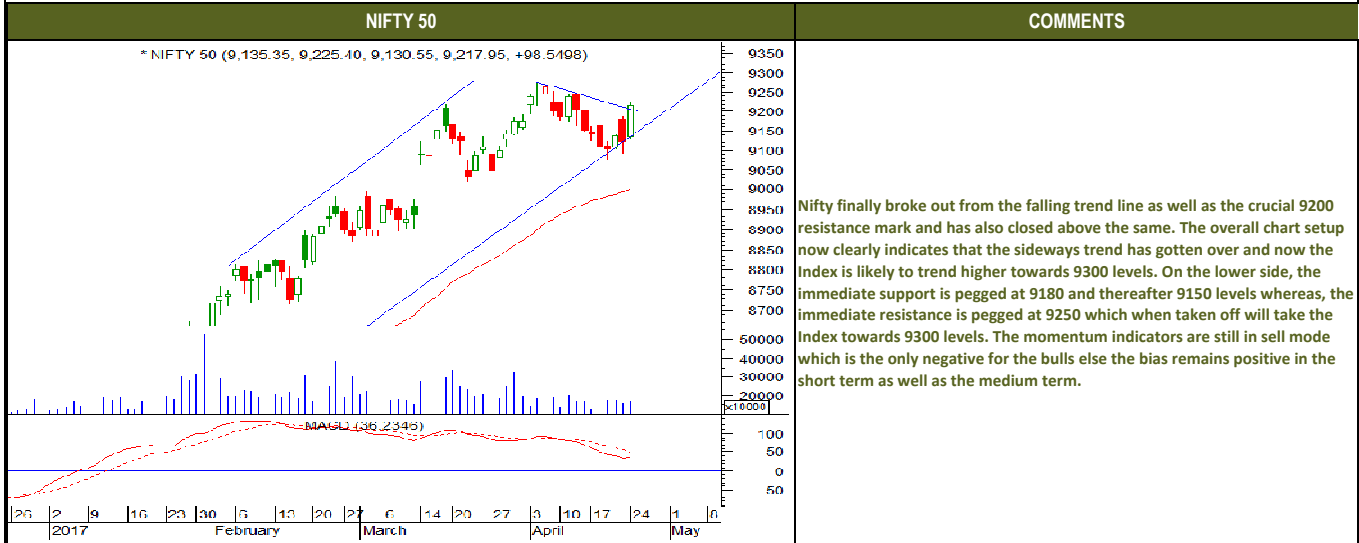




Tuesday, April 25, 2017

### TECHNICALS



Tuesday, April 25, 2017

### TECHNICALS





Tuesday, April 25, 2017

### TECHNICALS

BANK NIFTY	COMMENTS
<p>~ NIFTY BANK (21,991.90, 21,884.85, 21,578.65, 21,857.40, +309.951)</p> <p>MACD (DFMA-smoothing) (88, 4258, -66.3622)</p> <p>November   December   2017   February   March   April   May</p>	<p>The Nifty bank continues to maintain its range of 21400-21800 levels for this weekly series as well and this we have been saying since couple of weeks now. With yesterday's move we think the probability of 22000 being tested again is quite high, hence we continue to maintain our bias positive for the Index in the short term. On the lower side, the Index has a support at 21600 on immediate basis and thereafter at 21400 levels whereas the immediate resistance is 21800 levels and thereafter 22000 levels.</p>



Tuesday, April 25, 2017

### INDIAN INDICES

INDICES	CLOSE	CHANGE	% CHG
SENSEX	29656	290.54	0.99
NIFTY	9218	98.55	1.08

### TURNOVER & MARKET CAP

Rs. (Cr.)	YEST.DAY	PREV.DAY	% CHG
BSE Cash	7376	4029	83.10
NSE Cash	25926	25406	2.05
Derivatives(bn)	4485	7392	-39.32

### INSTITUTIONAL ACTIVITIES

DII Equity	1132	9	12738.89
FII Equity	-978	-169	479.45
FII F&O	-873	-388	124.83

### ADVANCES & DECLINES

EXCHANGE	ADV	DECLINES	TOTAL
BSE	1625	1422	3047
NSE	989	696	1685

### INDIAN ADR's

ADR	CLOSE	PREV.CLOSE	% CHG
Infosys	14.47	14.48	0.07
HDFC Bank	77.46	77.30	-0.21
Wipro	9.85	9.70	-1.52
ICICI Bank	8.31	8.25	-0.72
Sterlite Inds.	23.45	23.40	-0.21
Dr. Reddy's Lab	40.74	40.57	-0.42

### SECTORAL INDICES

INDICES	BSE		NSE		
	CLOSE	%	INDICES	CLOSE	
CNX Bank	21857	1.42	BSE MIDcap	14626	0.95
CNX IT	10058	0.50	BSE SmallCap	15291	0.82
CNX Realty	259	2.40	BSE 200	4042	1.00
CNX FMCG	23345	0.49	OTHER IMP. DATA		
CNX Infra	3238	1.27	10 Yr Gsec yield	6.94	
CNX Pharma	10178	-0.30	RS/\$	64.46	
BSE Auto	22180	1.19	\$ Index	99.00	
BSE Metal	11132	0.70	Brent Crude (\$)	52.47	
CNX MNC	10990	1.01	Gold (\$)	1271.43	
BSE 500	12854	0.98	Silver (\$)	17.82	
Nifty Midcap	4547	1.01	PE	CURRENT AVG	
BSE 100	9570	1.03	NIFTY	21.9	19.7

### TOP OUTPERFORMERS

SENSEX			NIFTY		
SYMBOL	CLOSE	%	SYMBOL	CLOSE	%
JP Asso.	13.3	4.08	ACC	1607.0	7.46
DLF	190.0	4.00	GRASIM	1180.1	4.46
L&T	1730.6	2.54	ULTRATECHCEM	4141.6	4.10
HDFC Bank	1532.8	2.41	GAIL	412.7	3.30
Tata power	86.0	2.38	AMBUJA	246.7	3.05

### TOP UNDERPERFORMERS

SENSEX			NIFTY		
SYMBOL	CLOSE	%	SYMBOL	CLOSE	%
Cipla/India	556.1	-1.30	LUPIN	1361.5	-3.29
NTPC	166.2	-0.51	Zee Entertainment	524.6	-0.77
Wipro	491.8	-0.28	NTPC	166.6	-0.39
ICICI Bank	268.7	-0.17	POWERGRID	204.9	-0.36
HUL	904.8	-0.15	IDEA	85.0	-0.35

### BSE 500

TOP OUTPERFORMERS			TOP UNDERPERFORMERS		
SYMBOL	CLOSE	%	SYMBOL	CLOSE	%
Orient Cement Ltd	168.1	10.38	Eros International	237.1	-6.06
Indian Bank	285.2	9.29	Dish TV India Ltd	93.6	-5.60
Vijaya Bank	75.3	8.74	Shipping Corp of I	80.0	-4.88
India Cements Ltd/The	201.3	7.05	Lupin Ltd	1362.2	-3.33
Prism Cement Ltd	112.0	7.03	Great Eastern Ship	454.1	-2.99
Hathway Cable & Datacom Ltd	47.1	6.92	Tamil Nadu News	294.4	-2.89
GE Power India Ltd	673.5	6.82	Marksans Pharma	51.1	-2.85
Indiabulls Real Estate Ltd	152.1	6.48	Inox Wind Ltd	198.8	-2.79
UCO Bank	39.9	5.98	Muthoot Finance L	394.9	-2.78
Shree Cement Ltd	18575.9	5.77	Unichem Laborato	277.4	-2.63
Torrent Power Ltd	231.4	5.37	Biocon Ltd	1065.9	-2.52
Srei Infrastructure Finance Ltd	90.7	5.35	Westlife Developm	233.7	-2.52
PNC Infratech Ltd	158.9	5.27	Abbott India Ltd	4470.4	-2.48
JK Tyre & Industries Ltd	160.8	5.24	OnMobile Global L	83.6	-2.39
Reliance Power Ltd	49.7	5.19	AstraZeneca Phar	1003.1	-2.36
Himatsingka Seide Ltd	361.2	5.18	EID Parry India Lt	295.4	-2.27
Hindustan Construction Co Ltd	45.8	5.05	Sonata Software L	164.2	-2.26
Bharat Financial Inclusion Ltd	785.7	5.01	Gateway Distripa	266.8	-2.18
Dilip Buildcon Ltd	434.3	5.01	Granules India Ltd	146.9	-2.17
Akzo Nobel India Ltd	2024.3	4.96	Glenmark Pharma	883.1	-2.16
Bharat Forge Ltd	1130.8	4.92	Jubilant Life Scien	790.2	-2.15
ITD Cementation India Ltd	184.7	4.91	PTC India Financia	46.1	-2.02
Future Retail Ltd	318.7	4.87	Balmer Lawrie & C	233.6	-2.01
Ingersoll-Rand India Ltd	856.5	4.64	Jammu & Kashmir	78.9	-1.99
UltraTech Cement Ltd	4144.4	4.42	Yamini Investment	27.2	-1.98



Tuesday, April 25, 2017

### TRENDER+ OF NIFTY 50 STOCKS

SCRIP NAME	CLOSE	R 1	R 2	S 1	S 2	TRENDER+	PIVOT TABLE				
ACC	1607	1645	1682	1540	1473	UP					
AMBUJA CEMENT	247	252	256	241	235	UP					
ASIAN PAINTS	1068	1074	1079	1063	1058	UP					
AXIS BANK	499	508	517	485	472	Flat	HIGH	9225	29681	21885	10071
BAJAJ AUTO	2859	2884	2908	2823	2786	UP	LOW	9131	29393	21579	9939
BHARTI AIRTEL	345	348	352	340	335	Down	CLOSE	9218	29656	21857	10058
BHEL	176	178	179	175	174	Down	PIVOT	9191	29577	21774	10023
BPCL	715	721	728	707	700	UP	R 1	9252	29760	21969	10107
CAIRN INDIA	283	286	289	280	276	UP	R 2	9286	29865	22080	10155
CIPLA	557	564	570	552	547	UP	S 1	9157	29472	21662	9974
COAL INDIA	277	279	281	276	274	Down	S 2	9096	29288	21467	9890
LUPIN	1362	1396	1429	1342	1322	UP					
Dr.REDDY'S LABS	2608	2627	2645	2590	2572	UP					
GAIL INDIA	413	418	424	403	394	UP					
GRASIM INDS	1180	1205	1229	1141	1103	UP					
HCL TECH	818	825	832	810	802	Flat					
HDFC	1531	1544	1557	1513	1494	UP					
HDFC BANK	1533	1549	1565	1507	1481	UP					
HERO MOTOCORP	3204	3220	3236	3188	3171	Down					
HINDALCO	191	193	194	188	185	UP					
HINDUSTAN UNILEVER	905	910	916	899	893	Down					
ICICI BANK	269	272	275	265	262	Down					
IDFC	58	58	59	57	57	UP					
INDUSIND BANK	1434	1442	1450	1428	1422	UP					
INFOSYS	927	932	938	917	907	Flat					
ITC	277	279	282	273	269	Down					
ULTRATECH CEMENT	4142	4241	4340	4010	3879	UP					
TECH MAHINDRA	429	433	436	425	421	Flat					
KOTAK MAHINDRA BANK	896	904	912	882	868	UP					
LARSEN & TOUBRO	1733	1750	1767	1702	1671	UP					
MAHINDRA & MAHINDRA	1265	1271	1277	1258	1252	Flat					
MARUTI SUZUKI	6318	6369	6419	6234	6149	UP					
ADANI PORTS & SPECIAL ECON	331	335	338	327	323	Flat					
NTPC	167	168	170	165	164	UP					
ONGC	182	182	183	181	180	Flat					
POWERGRID	205	207	208	204	202	Down					
PUNJAB NATIONAL BANK	155	157	158	154	153	UP					
IDEA	85	86	87	84	83	Down					
RELIANCE INDS	1417	1435	1452	1400	1383	UP					
ZEE ENTERTAINMENT ENTERPR	525	530	536	520	515	Down					
SAIL	60	61	61	60	60	Down					
SBI	286	289	292	282	278	Flat					
VEDANTA Ltd	232	234	237	228	225	Down					
YES BANK	1556	1572	1587	1542	1527	Down					
SUNPHARMA	643	648	653	635	627	Down					
TATA MOTORS	444	449	454	439	434	Flat					
TATA POWER	86	87	88	85	83	Flat					
TATA STEEL	451	455	458	447	443	Down					
TCS	2328	2351	2374	2294	2260	Flat					
WIPRO	492	496	501	486	480	Down					



## HOW TO TRADE USING THE TRENDER+

## CLOSING PRICES

Closing price is the price at which scrip closes on the date mentioned in the report. Traders may initiate their intraday trade on this level. The stock or index should sustain above or below the pivot else you should exit the trade.

## TREND

Trend is the level at which the tendency of stocks can be identified. For best results, you can use the 'trender' to trade. A 'weak' trend denoted by "DOWN" means that traders can trade with a negative bias. If the trend is 'strong', denoted by "UP", one can trade with a positive bias on the long side. Base price should be the pivot point price.

## IF THE TREND IS UP

Ideally, for a buy position, buy at the pivot point and use S1 as the stop loss for a target of levels around R2 and higher.

## IF THE TREND IS DOWN

Ideally, for a sell position, sell at the pivot point and use R1 as a stop loss and S2 or lower levels as a target level.

**TRENDER +** : This is a broad based technical trend of the stock prevalent, may or may not be necessarily for the day.

**DAILY PROJECTED RANGE** : Projected Daily high and low are indicative range for the day, if the price moves out of the range the trend in that side may accelerate and turn bullish or bearish.

THE TREND AND THE DAILY PROJECTED RANGE IS BASED ON CERTAIN SIMPLE CALCULATIONS WHICH IS PROVIDED BY BLOOMBERG, EXCLUSIVELY USED BY ANAND RATHI

**Disclaimer**-This report has been issued by Anand Rathi Share and Stock Brokers Limited (ARSSBL), which is regulated by SEBI. The information herein was obtained from various sources; we do not guarantee its accuracy or completeness. Neither the information nor any opinion expressed constitutes an offer, or an invitation to make an offer, to buy or sell any securities or any options, futures or other derivatives related to such securities ("related investments"). ARSSBL and its affiliates may trade for their own accounts as market maker / jobber and/or arbitrageur in any securities of this issuer(s) or in related investments, and may be on the opposite side of public orders. ARSSBL, its affiliates, directors, officers, and employees may have a long or short position in any securities of this issuer(s) or in related investments. ARSSBL or its affiliates may from time to time perform investment banking or other services for, or solicit investment banking or other business from, any entity mentioned in this report. This research report is prepared for private circulation. It does not have regard to the specific investment objectives, financial situation and the particular needs of any specific person who may receive this report. Investors should seek financial advice regarding the propriety of investing in any securities or investment strategies discussed or recommended in this report and should understand that statements regarding future prospects may not be realized. Investors should note that income from such securities, if any, may fluctuate and that each security's price or value may rise or fall. Past performance is not necessarily a guide to future performance. Foreign currency rates of exchange may adversely affect the value, price or income of any security or related investment mentioned in this report.

ANAND RATHI SHARE AND STOCK BROKERS LIMITED

4 th Floor , Silver Metropolis, Jaicoach Compound Opposite Bimbisar Nagar, Goregaon(East), Mumbai - 400063.

Tel No: +91 22 4001 3700 | Fax No: +91 22 4001 3770 | Website: www.rathi.com