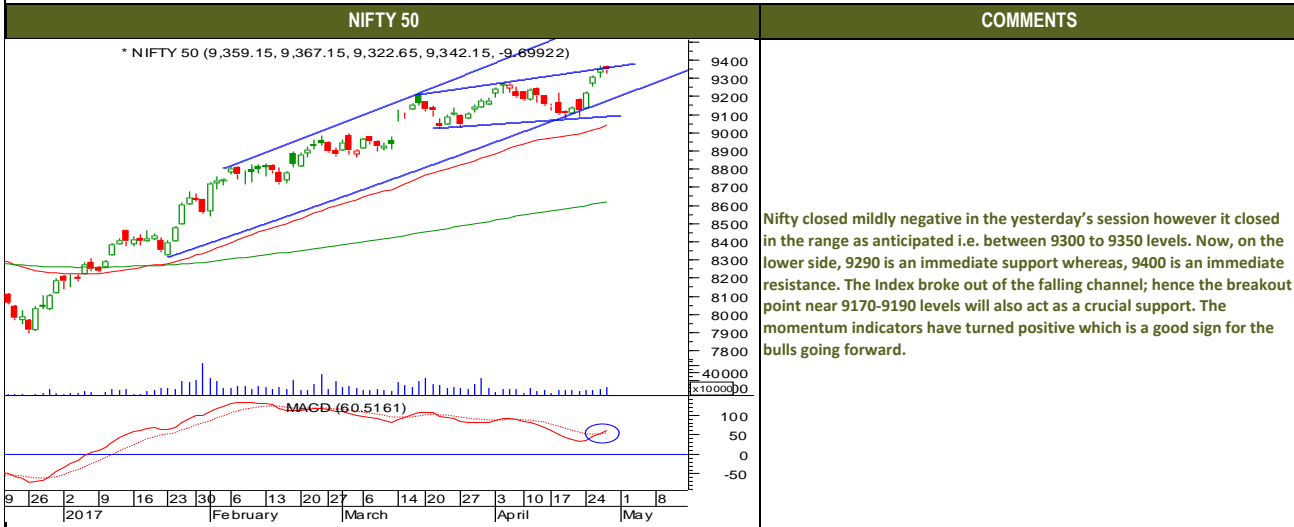




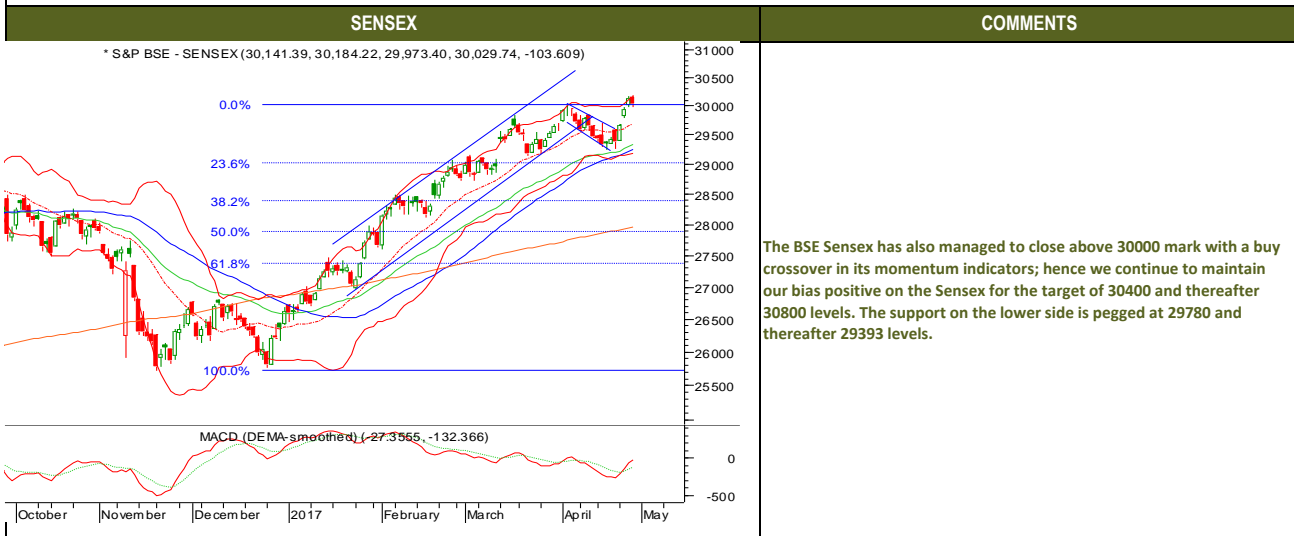
Friday, April 28, 2017

TECHNICALS



Friday, April 28, 2017

TECHNICALS





Friday, April 28, 2017

TECHNICALS

BANK NIFTY

COMMENTS

* NIFTY BANK (22,274.05, 22,380.85, 22,169.80, 22,326.30, +83.4512)



The Nifty bank closed in the positive territory on the expiry day, on the lower side 22000 is an important support whereas 22380 is a crucial resistance. The momentum indicators have turned positive which is a good sign with a channel breakout on the upside. So, till 22000 levels are not broken the overall trend remains positive for the target of 22400 and thereafter 22800 levels.



Friday, April 28, 2017

INDIAN INDICES

INDICES	CLOSE	CHANGE	% CHG
SENSEX	30030	-103.61	-0.34
NIFTY	9342	-9.70	-0.10

TURNOVER & MARKET CAP

Rs. (Cr.)	YEST'DAY	PREV.DAY	% CHG
BSE Cash	5022	4007	25.33
NSE Cash	31047	29462	5.38
Derivatives(bn)	7953	5994	32.68

INSTITUTIONAL ACTIVITIES

DII Equity	1011	998	1.31
FII Equity	-493	179	-375.43
FII F&O	2245	1306	71.86

ADVANCES & DECLINES

EXCHANGE	ADV	DECLINES	TOTAL
BSE	1311	1954	3265
NSE	737	919	1656

INDIAN ADR's

ADR	CLOSE	PREV.CLOSE	% CHG
Infosys	14.54	14.50	-0.28
HDFC Bank	80.46	80.95	0.61
Wipro	9.69	9.75	0.62
ICICI Bank	8.53	8.54	0.12
Sterlite Inds.	23.80	24.10	1.26
Dr. Reddy's Lab	41.28	40.44	-2.03

SECTORAL INDICES

INDICES	BSE		NSE		
	CLOSE	%	INDICES	CLOSE	
CNX Bank	22326	0.38	BSE MIDcap	14772	0.07
CNX IT	10012	0.46	BSE SmallCap	15279	-0.02
CNX Realty	256	0.39	BSE 200	4091	-0.10
CNX FMCG	24067	-0.98	OTHER IMP.DATA		
CNX Infra	3265	0.30	10 Yr Gsec yield	6.95	
CNX Pharma	10100	-0.95	RSI\$	64.14	
BSE Auto	22634	-0.12	\$ Index	99.02	
BSE Metal	11136	-1.03	Brent Crude (\$)	51.39	
CNX MNC	11165	-0.16	Gold (\$)	1264.51	
BSE 500	12994	-0.09	Silver (\$)	17.43	
Nifty Midcap	4607	-0.16	PE	CURRENT	
BSE 100	9694	-0.14	NIFTY	22.2	19.7

TOP OUTPERFORMERS

SENSEX			NIFTY		
SYMBOL	CLOSE	%	SYMBOL	CLOSE	%
JP Asso.	13.6	2.89	IDFC	61.2	4.70
HDFC Bank	1567.3	1.28	YES BANK	1642.4	3.81
DLF	189.6	1.15	ACC	1636.0	2.15
Tata Motors	456.0	1.14	KOTAK BANK	916.7	1.81
Infosys	924.0	1.08	AMBUJA	249.5	1.42

TOP UNDERPERFORMERS

SENSEX			NIFTY		
SYMBOL	CLOSE	%	SYMBOL	CLOSE	%
ITC	285.1	-1.91	AUROBINDO PH	607.1	-2.82
Tata Steel	445.8	-1.87	ITC	285.8	-1.75
SBI	282.0	-1.55	TATA STEEL	445.9	-1.75
HDFC	1567.4	-1.11	SBI	282.1	-1.54
Hindalco	194.8	-1.09	HDFC	1566.5	-1.23

BSE 500

TOP OUTPERFORMERS			TOP UNDERPERFORMERS		
SYMBOL	CLOSE	%	SYMBOL	CLOSE	%
Bank of India	177.5	8.70	Lakshmi Vilas Ba	180.5	-7.96
Aarti Industries	878.0	7.67	8K Miles Softwar	519.2	-5.41
Network 18 Media & Investments L	48.8	6.32	Adani Enterprises	114.3	-4.51
Vinati Organics Ltd	884.4	5.47	APL Apollo Tube	1346.9	-3.59
JSW Energy Ltd	67.0	5.18	Century Plyboard	256.1	-3.10
Uflex Ltd	340.5	5.14	Balkrishna Indust	1521.4	-3.05
J Kumar Infraprojects Ltd	286.6	4.96	Kwality Ltd	151.6	-2.91
Mangalore Refinery & Petrochemi	132.1	4.93	Fortis Healthcare	209.7	-2.89
IDFC Ltd	61.2	4.79	Prestige Estates	246.3	-2.78
Reliance Capital Ltd	669.8	4.57	Gayatri Projects L	155.9	-2.74
JBF Industries Ltd	293.5	4.43	Thomas Cook Inc	203.7	-2.68
GRUH Finance Ltd	400.7	4.25	Himachal Futuris	15.6	-2.68
Nestle India Ltd	6699.7	4.25	Bliss Gvs Pharma	162.4	-2.67
Indo Count Industries Ltd	203.1	4.21	Aurobindo Pharm	609.2	-2.50
Lakshmi Machine Works Ltd	4665.7	3.93	Aikem Laboratori	1916.0	-2.48
Unichem Laboratories Ltd	281.4	3.84	Lupin Ltd	1337.3	-2.48
Prism Cement Ltd	118.0	3.83	Jubilant Life Scie	764.3	-2.41
Yes Bank Ltd	1640.2	3.79	Tata Elxsi Ltd	1529.7	-2.39
Godfrey Phillips India Ltd	1229.4	3.57	NMDC Ltd	126.4	-2.36
Ingersoll-Rand India Ltd	906.2	3.47	DCM Shriram Ltd	343.9	-2.33
Hexaware Technologies Ltd	230.1	3.37	Eros International	219.8	-2.27
Mahindra Lifespace Developers Ltd	436.9	3.34	IIFL Holdings Ltd	490.1	-2.26
India Cements Ltd/The	211.9	3.32	Hindustan Zinc Lt	266.9	-2.23
Jaiprakash Associates Ltd	13.6	2.89	Just Dial Ltd	507.4	-2.22
NBCC India Ltd	199.8	2.88	TVS Srichakra Li	4101.5	-2.20



TRENDER+ OF NIFTY 50 STOCKS

SCRIP NAME	CLOSE	R 1	R 2	S 1	S 2	TRENDER+	PIVOT TABLE				
ACC Ltd	1636	1668	1679	1602	1568	UP					
Adani Ports & Special Economic	323	327	332	319	316	Down					
Ambuja Cements Ltd	250	252	255	245	241	UP					
Asian Paints Ltd	1105	1113	1120	1095	1085	UP	HIGH	9367	30184	22381	10046
Aurobindo Pharma Ltd	607	623	639	598	589	Down	LOW	9323	29973	22170	9965
Axis Bank Ltd	507	519	532	499	491	UP	CLOSE	9342	30030	22326	10012
Bajaj Auto Ltd	2866	2903	2941	2840	2815	Down	PIVOT	9344	30062	22292	10008
Bank of Baroda	181	184	186	180	178	UP	R 1	9365	30152	22415	10050
Bharat Petroleum Corp Ltd	736	742	747	727	718	UP	R 2	9388	30273	22503	10088
Bharti Airtel Ltd	358	362	366	354	350	UP	S 1	9321	29941	22204	9970
Bharti Infratel Ltd	367	370	374	362	358	UP	S 2	9299	29852	22081	9927
Bosch Ltd	22524	22681	22839	22383	22243	Down					
Cipla Ltd/India	562	566	570	556	551	Flat					
Coal India Ltd	274	277	280	272	270	Down					
Dr Reddy's Laboratories Ltd	2597	2619	2641	2681	2665	Down					
Eicher Motors Ltd	25967	26199	26430	25818	25668	UP					
GAIL India Ltd	418	423	428	413	407	UP					
Grasim Industries Ltd	1152	1171	1190	1136	1121	Down					
HCL Technologies Ltd	810	821	832	797	785	Down					
HDFC Bank Ltd	1569	1580	1591	1552	1535	UP					
Hero MotoCorp Ltd	3301	3353	3405	3260	3219	UP					
Hindalco Industries Ltd	195	197	199	193	191	UP					
Hindustan Unilever Ltd	947	953	960	939	930	UP					
Housing Development Finance	1567	1585	1603	1554	1541	UP					
ICICI Bank Ltd	274	276	279	273	271	Flat					
Indiabulls Housing Finance Ltd	1004	1016	1027	995	986	Down					
Indian Oil Corp Ltd	443	449	454	434	425	UP					
IndusInd Bank Ltd	1471	1483	1496	1458	1446	UP					
Infosys Ltd	925	931	936	918	910	Flat					
ITC Ltd	286	290	295	283	280	UP					
Kotak Mahindra Bank Ltd	917	927	938	898	879	UP					
Larsen & Toubro Ltd	1767	1779	1792	1749	1732	UP					
Lupin Ltd	1336	1360	1384	1322	1308	Down					
Mahindra & Mahindra Ltd	1337	1357	1376	1325	1313	UP					
Maruti Suzuki India Ltd	6374	6443	6511	6313	6252	UP					
NTPC Ltd	164	166	168	163	161	Down					
Oil & Natural Gas Corp Ltd	179	181	182	178	177	Down					
Power Grid Corp of India Ltd	208	210	213	205	203	UP					
Reliance Industries Ltd	1410	1422	1434	1400	1390	Down					
State Bank of India	282	286	291	279	277	UP					
Sun Pharmaceutical Industries	637	644	652	631	625	UP					
Tata Consultancy Services Ltd	2303	2328	2353	2278	2253	Down					
Tata Motors Ltd	276	279	282	274	272	Flat					
Tata Motors Ltd	455	460	465	452	448	Flat					
Tata Power Co Ltd/The	85	85	86	84	83	Down					
Tata Steel Ltd	446	452	459	442	437	UP					
Tech Mahindra Ltd	425	428	432	422	419	Down					
UltraTech Cement Ltd	4237	4253	4268	4217	4198	UP					
Wipro Ltd	496	500	504	490	484	Flat					
Yes Bank Ltd	1642	1672	1701	1594	1545	UP					
Zee Entertainment Enterprises	531	536	541	526	522	UP					



Friday, April 28, 2017

HOW TO TRADE USING THE TRENDER+

CLOSING PRICES

Closing price is the price at which scrip closes on the date mentioned in the report. Traders may initiate their intraday trade on this level. The stock or index should sustain above or below the pivot else you should exit the trade.

TREND

Trend is the level at which the tendency of stocks can be identified. For best results, you can use the 'trender' to trade. A 'weak' trend denoted by "DOWN" means that traders can trade with a negative bias. If the trend is 'strong', denoted by "UP", one can trade with a positive bias on the long side. Base price should be the pivot point price.

IF THE TREND IS UP

Ideally, for a buy position, buy at the pivot point and use S1 as the stop loss for a target of levels around R2 and higher.

IF THE TREND IS DOWN

Ideally, for a sell position, sell at the pivot point and use R1 as a stop loss and S2 or lower levels as a target level.

TRENDER + : This is a broad based technical trend of the stock prevalent, may or may not be necessarily for the day.

DAILY PROJECTED RANGE : Projected Daily high and low are indicative range for the day, if the price moves out of the range the trend in that side may accelerate and turn bullish or bearish.

THE TREND AND THE DAILY PROJECTED RANGE IS BASED ON CERTAIN SIMPLE CALCULATIONS WHICH IS PROVIDED BY BLOOMBERG, EXCLUSIVELY USED BY ANAND RATHI

Disclaimer—This report has been issued by Anand Rathi Share and Stock Brokers Limited (ARSSBL), which is regulated by SEBI. The information herein was obtained from various sources; we do not guarantee its accuracy or completeness. Neither the information nor any opinion expressed constitutes an offer, or an invitation to make an offer, to buy or sell any securities or any options, futures or other derivatives related to such securities ("related investments"). ARSSBL and its affiliates may trade for their own accounts as market maker / jobber and/or arbitrageur in any securities of this issuer(s) or in related investments, and may be on the opposite side of public orders. ARSSBL, its affiliates, directors, officers, and employees may have a long or short position in any securities of this issuer(s) or in related investments. ARSSBL or its affiliates may from time to time perform investment banking or other services for, or solicit investment banking or other business from, any entity mentioned in this report. This research report is prepared for private circulation. It does not have regard to the specific investment objectives, financial situation and the particular needs of any specific person who may receive this report. Investors should seek financial advice regarding the appropriateness of investing in any securities or investment strategies discussed or recommended in this report and should understand that statements regarding future prospects may not be realized. Investors should note that income from such securities, if any, may fluctuate and that each security's price or value may rise or fall. Past performance is not necessarily a guide to future performance. Foreign currency rates of exchange may adversely affect the value, price or income of any security or related investment mentioned in this report.

ANAND RATHI SHARE AND STOCK BROKERS LIMITED

4 th Floor , Silver Metropolis, Jaicoach Compound Opposite Bimbisar Nagar, Goregaon(East), Mumbai - 400063.

Tel No: +91 22 4001 3700 | Fax No: +91 22 4001 3770 | Website: www.rathi.com