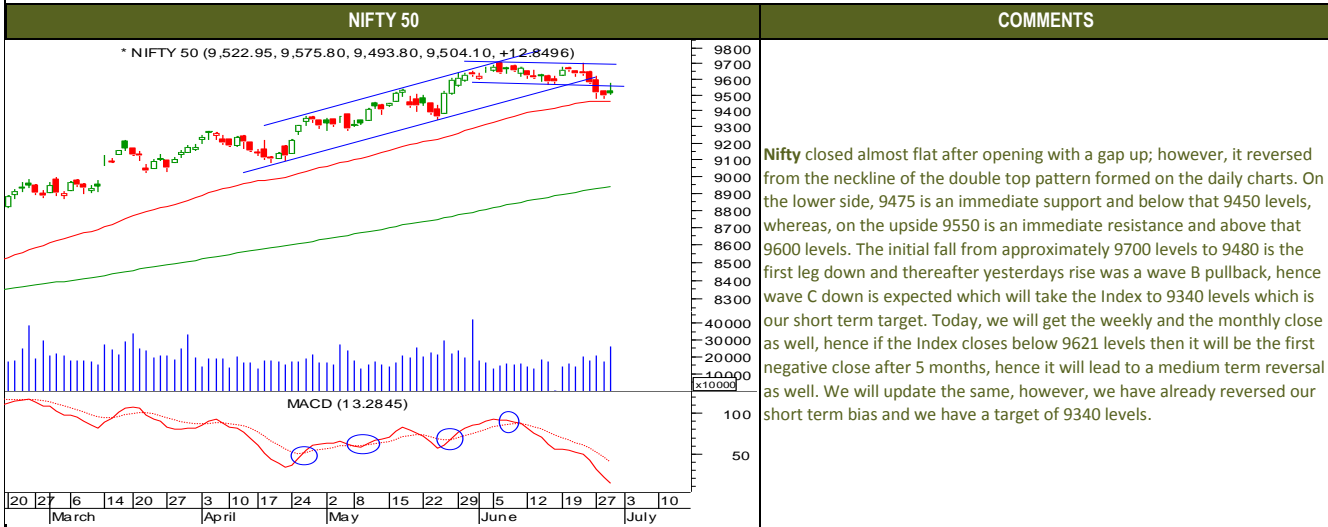




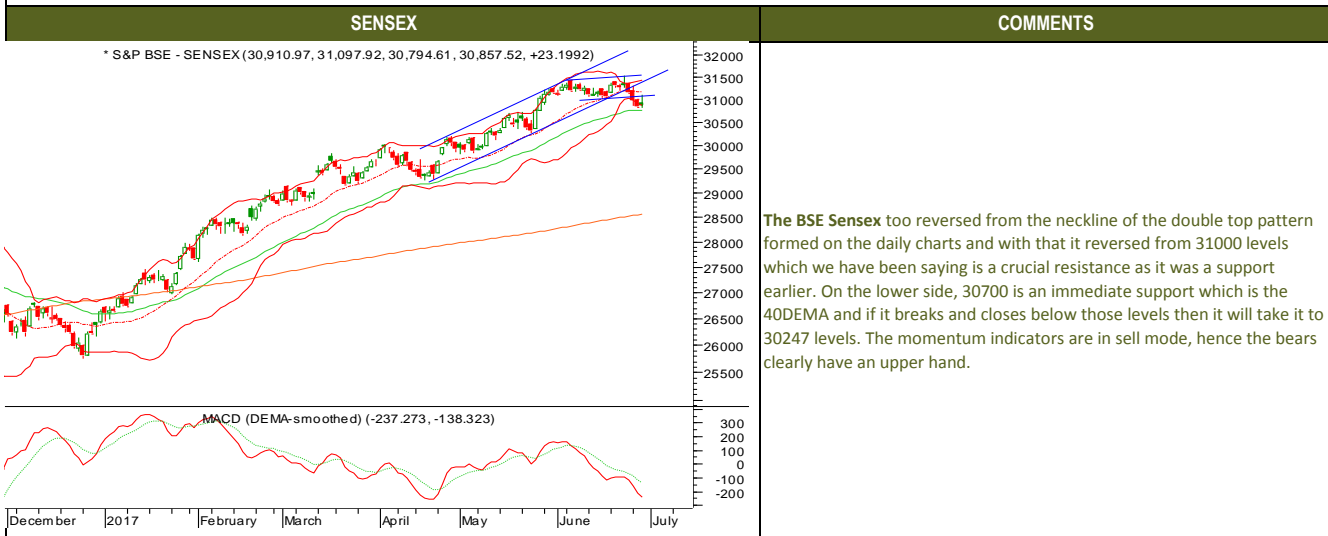
Friday, June 30, 2017

TECHNICALS



Friday, June 30, 2017

TECHNICALS





TECHNICALS

BANK NIFTY	COMMENTS
<p>* NIFTY BANK (23,312.40, 23,476.00, 23,124.35, 23,227.30, -8.54883)</p> <p>MACD (DEMA-smoothed) (-240.510, -130.628)</p> <p>2017 February March April May June July</p>	<p>The Nifty bank too reversed from the higher levels after a string recovery, however, 23500 was an immediate resistance and since it reversed from those levels it is quite clear that the Nifty bank is likely to break 23100 levels following which it will take the Index to 22500 levels. The momentum indicators are in sell mode, hence the overall bias in the short term remains negative.</p>



Friday, June 30, 2017

INDIAN INDICES

INDICES	CLOSE	CHANGE	% CHG
SENSEX	30858	23.20	0.08
NIFTY	9504	12.85	0.14

TURNOVER & MARKET CAP

Rs. (Cr.)	YEST'DAY	PREV.DAY	% CHG
BSE Cash	3918	3602	8.78
NSE Cash	29683	21803	36.14
Derivatives(bn)	7839	8261	-5.12

INSTITUTIONAL ACTIVITIES

DII Equity	169	-149	-213.75
FII Equity	-469	292	-260.59
FII F&O	703	32	2095.31

ADVANCES & DECLINES

EXCHANGE	ADV	DECLINES	TOTAL
BSE	1632	1332	2964
NSE	1107	546	1653

INDIAN ADR's

ADR	CLOSE	PREV.CLOSE	% CHG
Infosys	14.71	14.92	1.43
HDFC Bank	86.90	88.15	1.44
Wipro	5.10	5.10	0.00
ICICI Bank	9.01	9.06	0.55
Sterlite Inds.	22.75	23.05	1.32
Dr. Reddy's Lab	41.31	41.53	0.53

SECTORAL INDICES

BSE			NSE		
INDICES	CLOSE	%	INDICES	CLOSE	%
CNX Bank	23227	-0.04	BSE MIDcap	14552	0.34
CNX IT	10124	-0.09	BSE SmallCap	15310	0.98
CNX Realty	265	0.93	BSE 200	4134	0.21
CNX FMCG	26144	0.62	OTHER IMP.DATA		
CNX Infra	3209	0.25	10 Yr Gsec yield	6.49	
CNX Pharma	9428	-0.57	RS\$	64.56	
BSE Auto	23483	-0.03	\$ Index	95.84	
BSE Metal	11379	2.15	Brent Crude (\$)	47.49	
CNX MNC	12074	0.38	Gold (\$)	1246.57	
BSE 500	13131	0.30	Silver (\$)	16.81	
Nifty Midcap	4499	0.38	PE	CURRENT	AVG
BSE 100	9827	0.16	NIFTY	23.0	19.7

TOP OUTPERFORMERS

SENSEX			NIFTY	
SYMBOL	CLOSE	%	SYMBOL	CLOSE
JP Asso.	22.7	13.61	AXIS BANK	512.1
SESA Goa	251.2	3.57	TATA STEEL	535.1
Tata Steel	534.7	2.85	GAIL	362.4
Jindal Steel	122.5	2.77	BPCL	626.1
DLF	194.1	1.84	BHARTI	382.5

TOP UNDERPERFORMERS

SENSEX			NIFTY	
SYMBOL	CLOSE	%	SYMBOL	CLOSE
Tata Motors	436.0	-1.40	KOTAK BANK	948.4
SBI	272.6	-1.39	SBI	272.5
Sun Pharma	538.5	-1.23	TECH MAHINDRA	388.9
TCS	2334.7	-0.70	LUPIN	1055.6
Reliance Inds.	1392.9	-0.40	INDUSIND	1478.5

BSE 500

TOP OUTPERFORMERS			TOP UNDERPERFORMERS	
SYMBOL	CLOSE	%	SYMBOL	CLOSE
Jaiprakash Associates Ltd	22.7	13.61	Rashtriya Chemicals & Fertilizers Ltd	#####
CARE Ratings Ltd	1596.9	11.79	Page Industries Ltd	#####
Shoppers Stop Ltd	342.3	9.89	Gujarat State Petronet Ltd	#####
Shipping Corp of India Ltd	82.8	7.18	Havells India Ltd	#####
Rain Industries Ltd	111.3	7.02	JBF Industries Ltd	#####
Sunteck Realty Ltd	483.1	6.40	Oriental Bank of Commerce	#####
Reliance Communications Ltd	22.0	5.28	Blue Star Ltd	#####
Amtek Auto Ltd	30.9	4.92	InterGlobe Aviation Ltd	#####
Dish TV India Ltd	79.2	4.90	Monsanto India Ltd	#####
Videocon Industries Ltd	19.9	4.75	Tata Motors Ltd	#####
Nava Bharat Ventures Ltd	131.2	4.42	Power Finance Corp Ltd	#####
Firstsource Solutions Ltd	33.4	4.38	Phoenix Mills Ltd/The	#####
Dr Lal PathLabs Ltd	835.1	4.33	GHCL Ltd	#####
Chennai Petroleum Corp Ltd	363.2	4.32	Gujarat State Fertilizers & Chemicals Ltd	#####
India Cements Ltd/The	199.0	4.16	Cox & Kings Ltd	#####
Dilip Buildcon Ltd	438.2	4.09	Fortis Healthcare Ltd	#####
Srei Infrastructure Finance Ltd	117.1	4.04	SITI Networks Ltd	#####
Sintex Industries Ltd	24.8	3.98	Tata Motors Ltd	#####
Minda Industries Ltd	629.6	3.98	State Bank of India	#####
JSW Steel Ltd	205.2	3.85	JB Chemicals & Pharmaceuticals Ltd	#####
Sonata Software Ltd	156.8	3.77	Capital First Ltd	#####
ICICI Prudential Life Insurance Co	473.6	3.73	JK Cement Ltd	#####
Jindal Poly Films Ltd	387.8	3.70	Max Financial Services Ltd	#####
Chambal Fertilizers and Chemicals	122.2	3.56	Redington India Ltd	#####
Vedanta Ltd	250.9	3.55	HT Media Ltd	#####



Friday, June 30, 2017

TRENDER+ OF NIFTY 50 STOCKS

SCRIP NAME	CLOSE	R 1	R 2	S 1	S 2	TRENDER+	PIVOT TABLE				
ACC Ltd	1580	1604	1628	1564	1548	UP					
Adani Ports & Special Economic	365	368	372	362	359	Down					
Ambuja Cements Ltd	247	249	251	244	242	UP					
Asian Paints Ltd	1105	1121	1137	1094	1084	Down	HIGH	9576	31098	23476	10239
Aurobindo Pharma Ltd	671	679	686	665	660	UP	LOW	9494	30795	23124	10106
Axis Bank Ltd	512	518	525	502	491	UP	CLOSE	9504	30858	23227	10124
Bajaj Auto Ltd	2801	2816	2830	2783	2765	Down	PIVOT	9525	30917	23276	10156
Bank of Baroda	156	157	159	154	153	Down	R 1	9555	31039	23427	10207
Bharat Petroleum Corp Ltd	626	634	642	618	609	Flat	R 2	9607	31220	23628	10289
Bharti Airtel Ltd	382	387	391	378	374	UP	S 1	9473	30735	23076	10074
Bharti Infratel Ltd	378	382	387	374	370	Flat	S 2	9443	30613	22924	10023
Bosch Ltd	23264	23442	23621	23142	23021	Down					
Cipla Ltd/India	544	549	554	536	529	UP					
Coal India Ltd	245	247	249	244	243	Down					
Dr Reddy's Laboratories Ltd	2655	2668	2681	2641	2627	UP					
Eicher Motors Ltd	27340	27649	27957	27016	26691	Flat					
GAIL India Ltd	362	366	369	358	353	UP					
Grasim Industries Ltd	1217	1228	1239	1206	1195	UP					
HCL Technologies Ltd	848	856	864	841	835	Flat					
HDFC Bank Ltd	1663	1680	1696	1649	1635	UP					
Hero MotoCorp Ltd	3725	3746	3768	3692	3660	Flat					
Hindalco Industries Ltd	192	193	195	191	190	UP					
Hindustan Unilever Ltd	1088	1094	1099	1083	1079	Down					
Housing Development Finance	1632	1651	1671	1617	1601	Down					
ICICI Bank Ltd	293	297	300	290	287	UP					
Indiabulls Housing Finance Ltd	1096	1109	1123	1081	1066	Flat					
Indian Oil Corp Ltd	387	392	397	382	377	Down					
IndusInd Bank Ltd	1479	1501	1523	1465	1452	Down					
Infosys Ltd	930	943	956	922	914	Down					
ITC Ltd	312	314	316	309	307	UP					
Kotak Mahindra Bank Ltd	948	969	989	937	925	Down					
Larsen & Toubro Ltd	1704	1719	1735	1692	1680	Down					
Lupin Ltd	1056	1066	1076	1049	1043	Down					
Mahindra & Mahindra Ltd	1356	1372	1389	1346	1335	UP					
Maruti Suzuki India Ltd	7224	7275	7325	7190	7155	Down					
NTPC Ltd	159	160	161	158	157	Flat					
Oil & Natural Gas Corp Ltd	158	160	162	156	155	Down					
Power Grid Corp of India Ltd	208	210	212	206	205	UP					
Reliance Industries Ltd	1393	1405	1418	1385	1378	Down					
State Bank of India	272	277	282	270	267	UP					
Sun Pharmaceutical Industries	537	544	552	532	527	UP					
Tata Consultancy Services Ltd	2333	2363	2392	2314	2294	Down					
Tata Motors Ltd	288	276	283	264	260	Down					
Tata Motors Ltd	436	443	451	431	426	Down					
Tata Power Co Ltd/The	82	83	83	81	80	Down					
Tata Steel Ltd	535	540	546	526	517	UP					
Tech Mahindra Ltd	389	394	399	386	383	Flat					
UltraTech Cement Ltd	3954	3989	4025	3929	3905	Down					
Wipro Ltd	259	261	264	257	254	Flat					
Yes Bank Ltd	1439	1461	1484	1425	1411	Flat					
Zee Entertainment Enterprises	489	493	496	485	482	UP					



Friday, June 30, 2017

HOW TO TRADE USING THE TRENDER+

CLOSING PRICES

Closing price is the price at which scrip closes on the date mentioned in the report. Traders may initiate their intraday trade on this level. The stock or index should sustain above or below the pivot else you should exit the trade.

TREND

Trend is the level at which the tendency of stocks can be identified. For best results, you can use the 'trender' to trade. A 'weak' trend denoted by "DOWN" means that traders can trade with a negative bias. If the trend is 'strong', denoted by "UP", one can trade with a positive bias on the long side. Base price should be the pivot point price.

IF THE TREND IS UP

Ideally, for a buy position, buy at the pivot point and use S1 as the stop loss for a target of levels around R2 and higher.

IF THE TREND IS DOWN

Ideally, for a sell position, sell at the pivot point and use R1 as a stop loss and S2 or lower levels as a target level.

TRENDER +: This is a broad based technical trend of the stock prevalent, may or may not be necessarily for the day.

DAILY PROJECTED RANGE: Projected Daily high and low are indicative range for the day, if the price moves out of the range the trend in that side may accelerate and turn bullish or bearish.

THE TREND AND THE DAILY PROJECTED RANGE IS BASED ON CERTAIN SIMPLE CALCULATIONS WHICH IS PROVIDED BY BLOOMBERG, EXCLUSIVELY USED BY ANAND RATHI

Disclaimer: This report has been issued by Anand Rathi Share and Stock Brokers Limited (ARSSBL), which is regulated by SEBI. The information herein was obtained from various sources; we do not guarantee its accuracy or completeness. Neither the information nor any opinion expressed constitutes an offer, or an invitation to make an offer, to buy or sell any securities or any options, futures or other derivatives related to such securities ("related investments"). ARSSBL and its affiliates may trade for their own accounts as market maker / jobber and/or arbitrageur in any securities of this issuer(s) or in related investments, and may be on the opposite side of public orders. ARSSBL, its affiliates, directors, officers and employees may have a long or short position in any securities of this issuer(s) or in related investments. ARSSBL or its affiliates may from time to time perform investment banking or other services for, or solicit investment banking or other business from, any entity mentioned in this report. This research report is prepared for private circulation. It does not have regard to the specific investment objectives, financial situation and the particular needs of any specific person who may receive this report. Investors should seek financial advice regarding the appropriateness of investing in any securities or investment strategies discussed or recommended in this report and should understand that statements regarding future prospects may not be realized. Investors should note that income from such securities, if any, may fluctuate and that each security's price or value may rise or fall. Past performance is not necessarily a guide to future performance. Foreign currency rates of exchange may adversely affect the value, price or income of any security or related investment mentioned in this report.

ANAND RATHI SHARE AND STOCK BROKERS LIMITED

4 th Floor , Silver Metropolis, Jaicoach Compound Opposite Bimbisar Nagar, Goregaon(East), Mumbai - 400063.

Tel No: +91 22 4001 3700 | Fax No: +91 22 4001 3770 | Website: www.rathi.com