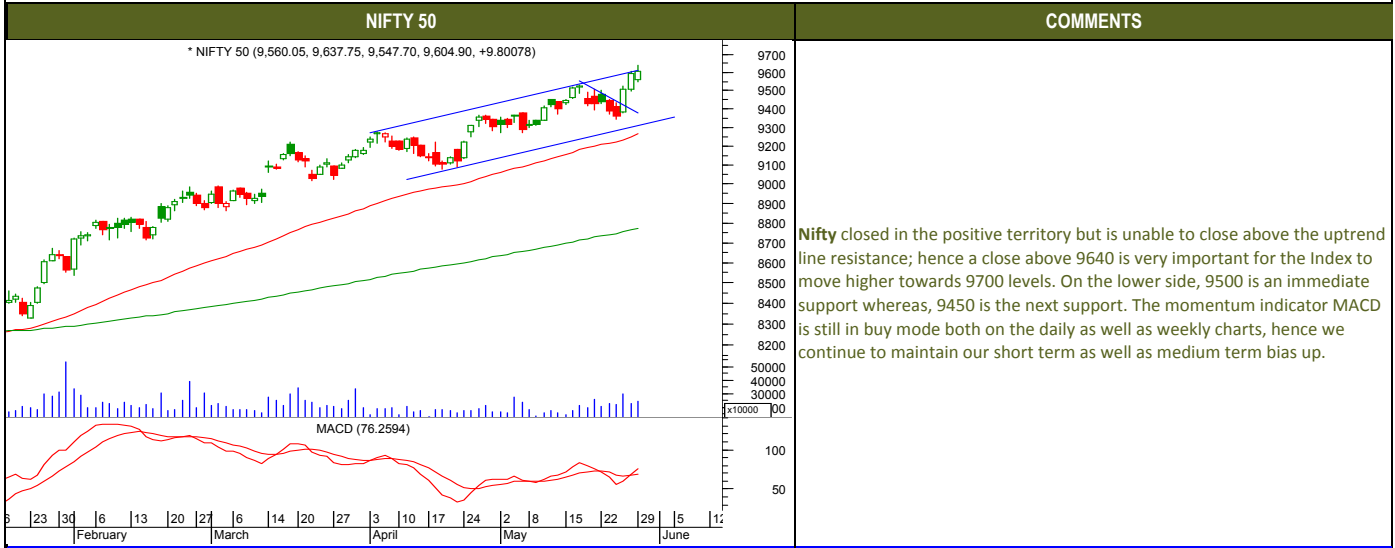
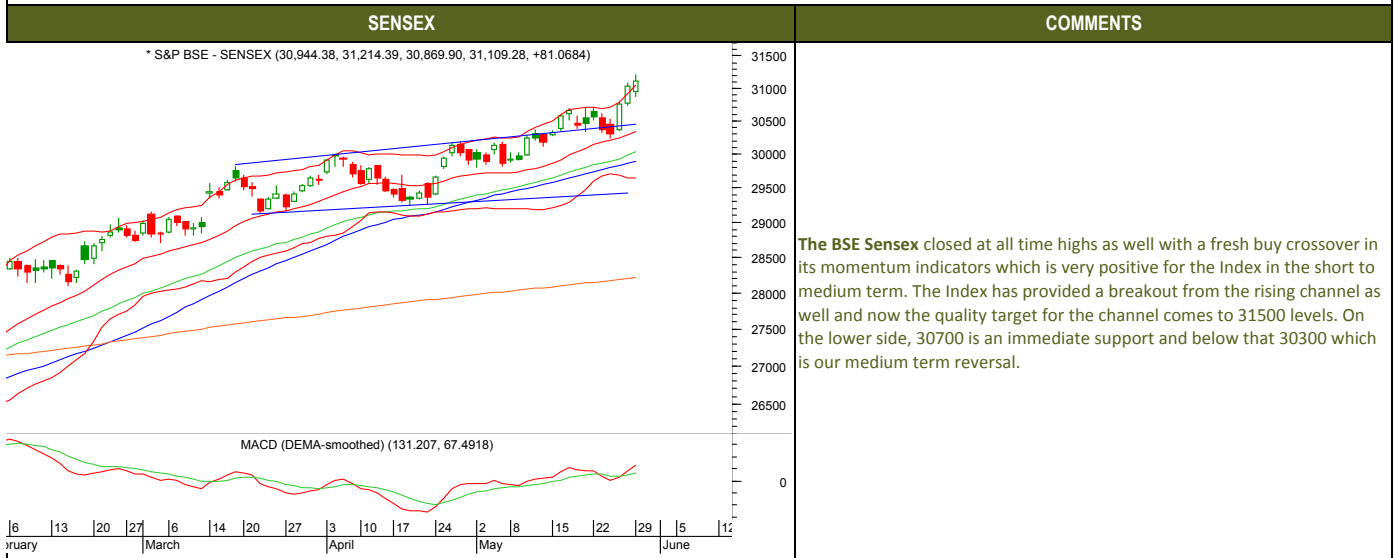




### TECHNICALS



### TECHNICALS





### TECHNICALS

#### BANK NIFTY

\* NIFTY BANK (23,310.60, 23,464.00, 23,141.15, 23,182.75, -179.449)



#### COMMENTS

The Nifty bank closed in the negative territory and on the hourly charts it seems to be forming wave b of the correction, hence wave C down can take it to 23100-23000 level. The momentum indicators both on the daily as well as weekly charts continue to remain in positive territory, hence we continue to maintain our bias up. Also, till Nifty bank stays above 23000 the traders should not worry on the long side.



Wednesday, May 31, 2017

### INDIAN INDICES

INDICES	CLOSE	CHANGE	% CHG
SENSEX	31159	50.12	0.16
NIFTY	9625	19.65	0.20

### TURNOVER & MARKET CAP

Rs. (Cr.)	YEST.DAY	PREV.DAY	% CHG
BSE Cash	3827	3836	-0.22
NSE Cash	24185	26025	-7.07
Derivatives(bn)	4262	3610	18.08

### INSTITUTIONAL ACTIVITIES

DII Equity	291	1009	-71.19
FII Equity	-710	-274	158.98
FII F&O	1984	3590	-44.74

### ADVANCES & DECLINES

EXCHANGE	ADV	DECLINES	TOTAL
BSE	1209	1798	3007
NSE	782	872	1654

### INDIAN ADR's

ADR	CLOSE	PREV.CLOSE	% CHG
Infosys	15.51	15.53	0.13
HDFC Bank	86.69	86.54	-0.17
Wipro	10.87	10.86	-0.09
ICICI Bank	9.68	9.72	0.41
Sterlite Inds.	22.00	21.80	-0.91
Dr. Reddy's Lab	37.54	37.28	-0.69

### SECTORAL INDICES

INDICES	BSE		NSE	
	CLOSE	%	INDICES	CLOSE
CNX Bank	23307	0.54	BSE MIDcap	14490
CNX IT	10609	0.38	BSE SmallCap	14924
CNX Realty	248	1.02	BSE 200	4156
CNX FMCG	25783	-0.63	OTHER IMP. DATA	
CNX Infra	3211	-0.35	10 Yr Gsec yield	6.67
CNX Pharma	8990	2.65	RS/\$	64.62
BSE Auto	23996	0.48	\$ Index	97.45
BSE Metal	11410	0.26	Brent Crude (\$)	51.76
CNX MNC	11897	0.28	Gold (\$)	1264.07
BSE 500	13158	0.35	Silver (\$)	17.32
Nifty Midcap	4447	0.28	PE	CURRENT AVG
BSE 100	9917	0.26	NIFTY	23.0
				19.7

### TOP OUTPERFORMERS

SENSEX			NIFTY	
SYMBOL	CLOSE	%	SYMBOL	CLOSE
JP Asso.	11.8	6.71	AUROBINDO PHARMA	580.3
NTPC	161.3	3.17	ADANI PORTS & SPECIAL ECONOMIC ZONE	340.4
Jindal Steel	123.2	2.37	NTPC	161.3
DLF	180.2	2.30	BANK OF BARODA	178.5
Hero Motocorp	3739.5	1.96	GRASIM	1132.5

### TOP UNDERPERFORMERS

SENSEX			NIFTY	
SYMBOL	CLOSE	%	SYMBOL	CLOSE
BHEL	140.0	-8.68	BHEL	140.4
ITC	310.4	-1.77	BHARTI INFRATEL	372.3
L&T	1766.9	-1.18	ITC	311.5
HDFC	1581.8	-1.07	HDFC	1579.5
Bharti Airtel	369.8	-0.88	INDUSIND	1473.9

### BSE 500

TOP OUTPERFORMERS			TOP UNDERPERFORMERS	
SYMBOL	CLOSE	%	SYMBOL	CLOSE
Aurobindo Pharma Ltd	580.2	12.94	Bharat Heavy Electricals Ltd	140.0
India Cements Ltd/The	204.9	8.70	Advanced Enzyme Technologies Ltd	358.9
Birla Corp Ltd	848.2	7.47	MMTC Ltd	55.9
Jaiprakash Associates Ltd	11.8	6.71	Videcon Industries Ltd	42.8
Entertainment Network India Ltd	799.5	6.59	Hexaware Technologies Ltd	236.4
Jubilant Life Sciences Ltd	730.7	6.47	Aban Offshore Ltd	180.9
Sun Pharma Advanced Research Co	290.8	6.02	Shree Renuka Sugars Ltd	13.2
Adani Enterprises Ltd	117.9	5.93	Parag Milk Foods Ltd	238.3
Jai Corp Ltd	79.8	5.77	Marksans Pharma Ltd	41.4
Natco Pharma Ltd	939.7	5.70	Oberoi Realty Ltd	370.4
Indiabulls Real Estate Ltd	166.6	5.54	Infibeam Incorporation Ltd	933.3
Hathway Cable & Datacom Ltd	41.9	5.54	Punj Lloyd Ltd	21.3
Dhanuka Agritech Ltd	844.7	4.89	PC Jeweller Ltd	495.8
CG Power and Industrial Solutions Ltd	82.7	4.69	Sintex Industries Ltd	28.0
Unichem Laboratories Ltd	253.2	4.67	Inox Wind Ltd	133.9
Rural Electrification Corp Ltd	205.8	4.44	RattanIndia Power Ltd	7.3
Eros International Media Ltd	217.1	4.40	GE Power India Ltd	643.1
Adani Transmission Ltd	114.8	4.27	Ingersoll-Rand India Ltd	770.8
Max Financial Services Ltd	559.3	4.17	Jubilant Foodworks Ltd	908.6
Godrej Industries Ltd	609.6	4.08	National Aluminium Co Ltd	66.5
Can Fin Homes Ltd	2727.5	4.06	Credit Analysis & Research Ltd	1384.8
Bajaj Finserv Ltd	4150.5	3.90	Jet Airways India Ltd	459.6
Indraprastha Gas Ltd	1061.7	3.84	Cholamandalam Investment and Finance Co L	1000.3
United Spirits Ltd	2089.9	3.63	Himatsingka Seide Ltd	337.1
Abbott India Ltd	4154.0	3.61	Manpasand Beverages Ltd	799.0



### TRENDER+ OF NIFTY 50 STOCKS

SCRIP NAME	CLOSE	R 1	R 2	S 1	S 2	TRENDER+	PIVOT TABLE				
ACC Ltd	1635	1653	1671	1606	1577	UP					
Adani Ports & Special Economic	340	346	352	331	321	Flat					
Ambuja Cements Ltd	242	245	248	238	234	Flat					
Asian Paints Ltd	1159	1168	1177	1149	1138	UP	HIGH	NIFTY	SENSEX	BANK NIFTY	CNX IT
Aurobindo Pharma Ltd	580	608	635	530	479	Flat	LOW	9635	31220	23337	10627
Axis Bank Ltd	514	520	525	506	498	UP	CLOSE	9581	31064	23094	10496
Bajaj Auto Ltd	2851	2870	2888	2828	2804	Flat	PIVOT	9625	31159	23307	10609
Bank of Baroda	179	181	184	174	169	Flat	R 1	9614	31148	23246	10578
Bharat Petroleum Corp Ltd	739	747	756	728	717	UP	R 2	9646	31232	23398	10659
Bharti Airtel Ltd	371	375	380	368	365	Down	S 1	9668	31304	23489	10708
Bharti Infratel Ltd	372	380	387	365	358	Down	S 2	9592	31076	23155	10528
Bosch Ltd	23538	23729	23919	23397	23255	UP		9560	30992	23003	10447
Cipla Ltd/India	511	518	526	502	494	Flat					
Coal India Ltd	268	271	274	262	256	Flat					
Dr Reddy's Laboratories Ltd	2481	2516	2550	2432	2382	Flat					
Eicher Motors Ltd	28323	28584	28846	27937	27551	UP					
GAIL India Ltd	405	410	415	399	393	UP					
Grasim Industries Ltd	1133	1147	1162	1107	1081	Flat					
HCL Technologies Ltd	868	876	883	857	845	UP					
HDFC Bank Ltd	1629	1636	1644	1619	1609	UP					
Hero MotoCorp Ltd	3740	3772	3804	3684	3628	UP					
Hindalco Industries Ltd	203	209	214	199	196	UP					
Hindustan Unilever Ltd	1073	1081	1089	1059	1045	UP					
Housing Development Finance C	1580	1597	1615	1568	1557	UP					
ICI Bank Ltd	321	326	330	316	310	UP					
Indiabulls Housing Finance Ltd	1114	1122	1131	1100	1087	UP					
Indian Oil Corp Ltd	420	426	433	416	412	Down					
IndusInd Bank Ltd	1474	1488	1503	1465	1457	UP					
Infosys Ltd	996	1005	1013	983	970	UP					
ITC Ltd	311	314	317	309	307	UP					
Kotak Mahindra Bank Ltd	962	968	973	956	950	UP					
Larsen & Toubro Ltd	1768	1816	1865	1736	1705	UP					
Lupin Ltd	1130	1145	1160	1113	1095	Down					
Mahindra & Mahindra Ltd	1361	1379	1398	1343	1324	UP					
Maruti Suzuki India Ltd	7148	7208	7269	7086	7024	UP					
NTPC Ltd	161	164	167	157	153	UP					
Oil & Natural Gas Corp Ltd	179	181	183	175	171	Flat					
Power Grid Corp of India Ltd	204	208	212	201	198	Flat					
Reliance Industries Ltd	1359	1367	1374	1350	1341	UP					
State Bank of India	289	292	295	283	278	UP					
Sun Pharmaceutical Industries L	508	512	515	503	498	UP					
Tata Consultancy Services Ltd	2551	2576	2602	2525	2500	Down					
Tata Motors Ltd	287	290	292	285	282	UP					
Tata Motors Ltd	481	486	490	479	476	UP					
Tata Power Co Ltd/The	82	83	84	81	80	Flat					
Tata Steel Ltd	512	516	520	506	500	UP					
Tech Mahindra Ltd	388	391	395	383	378	Down					
UltraTech Cement Ltd	4082	4111	4141	4053	4023	Down					
Wipro Ltd	536	541	546	530	525	UP					
Yes Bank Ltd	1438	1456	1473	1427	1415	Down					
Zee Entertainment Enterprises L	523	529	535	513	503	UP					



## HOW TO TRADE USING THE TRENDER+

## CLOSING PRICES

Closing price is the price at which scrip closes on the date mentioned in the report. Traders may initiate their intraday trade on this level. The stock or index should sustain above or below the pivot else you should exit the trade.

## TREND

Trend is the level at which the tendency of stocks can be identified. For best results, you can use the 'trender' to trade. A 'weak' trend denoted by "DOWN" means that traders can trade with a negative bias. If the trend is 'strong', denoted by "UP", one can trade with a positive bias on the long side. Base price should be the pivot point price.

## IF THE TREND IS UP

Ideally, for a buy position, buy at the pivot point and use S1 as the stop loss for a target of levels around R2 and higher.

## IF THE TREND IS DOWN

Ideally, for a sell position, sell at the pivot point and use R1 as a stop loss and S2 or lower levels as a target level.

**TRENDER +** : This is a broad based technical trend of the stock prevalent, may or may not be necessarily for the day.

**DAILY PROJECTED RANGE** : Projected Daily high and low are indicative range for the day, if the price moves out of the range the trend in that side may accelerate and turn bullish or bearish.

THE TREND AND THE DAILY PROJECTED RANGE IS BASED ON CERTAIN SIMPLE CALCULATIONS WHICH IS PROVIDED BY BLOOMBERG, EXCLUSIVELY USED BY ANAND RATHI

**Disclaimer**-This report has been issued by Anand Rathi Share and Stock Brokers Limited (ARSSBL), which is regulated by SEBI. The information herein was obtained from various sources; we do not guarantee its accuracy or completeness. Neither the information nor any opinion expressed constitutes an offer, or an invitation to make an offer, to buy or sell any securities or any options, futures or other derivatives related to such securities ("related investments"). ARSSBL and its affiliates may trade for their own accounts as market maker / jobber and/or arbitrageur in any securities of this issuer(s) or in related investments, and may be on the opposite side of public orders. ARSSBL, its affiliates, directors, officers, and employees may have a long or short position in any securities of this issuer(s) or in related investments. ARSSBL, or its affiliates may from time to time perform investment banking or other services for, or solicit investment banking or other business from, any entity mentioned in this report. This research report is prepared for private circulation. It does not have regard to the specific investment objectives, financial situation and the particular needs of any specific person who may receive this report. Investors should seek financial advice regarding the appropriateness of investing in any securities or investment strategies discussed or recommended in this report and should understand that statements regarding future prospects may not be realized. Investors should note that income from such securities, if any, may fluctuate and that each security's price or value may rise or fall. Past performance is not necessarily a guide to future performance. Foreign currency rates of exchange may adversely affect the value, price or income of any security or related investment mentioned in this report.

ANAND RATHI SHARE AND STOCK BROKERS LIMITED

4 th Floor , Silver Metropolis, Jaicoach Compound Opposite Bimbisar Nagar, Goregaon(East), Mumbai - 400063.

Tel No: +91 22 4001 3700 | Fax No: +91 22 4001 3770 | Website: www.rathi.com