



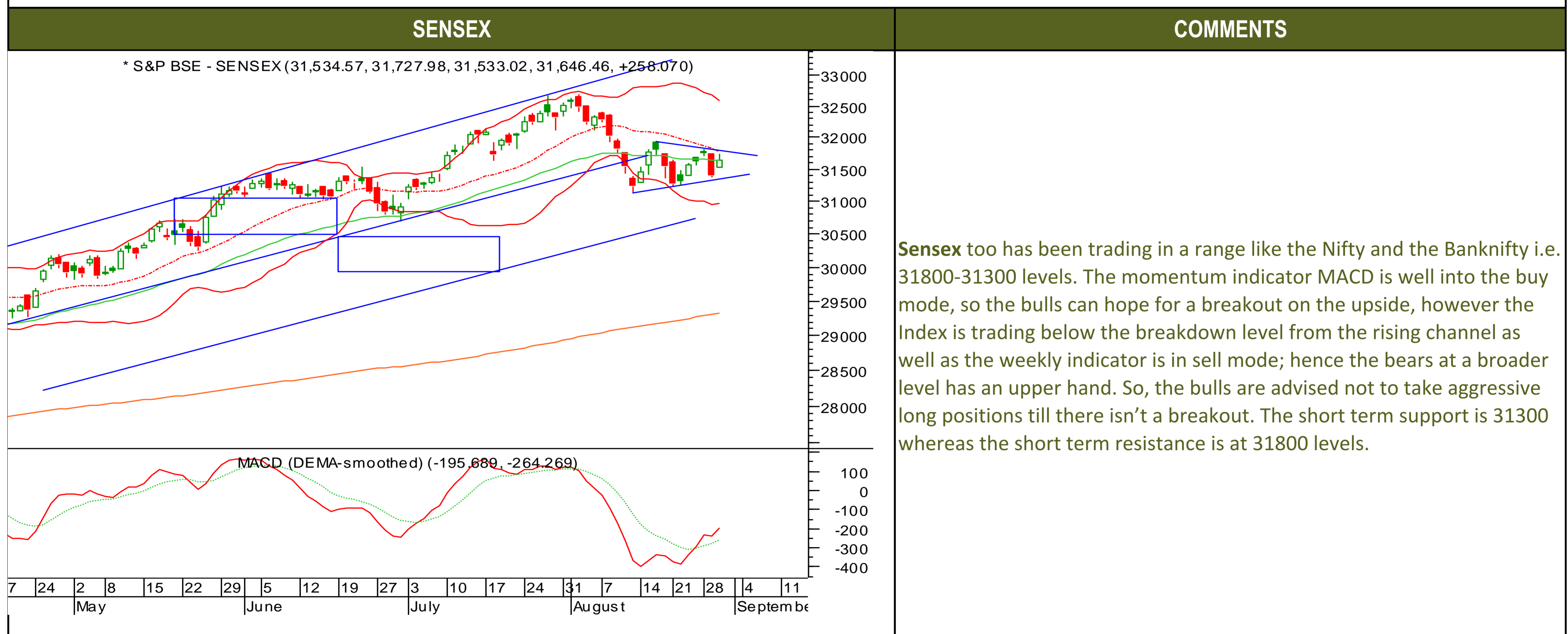
Thursday, August 31, 2017

TECHNICALS



Thursday, August 31, 2017

TECHNICALS





TECHNICALS

BANK NIFTY	COMMENTS
<p>* NIFTY BANK (24,253.05, 24,384.10, 24,241.30, 24,308.70, +179.750)</p> <p>MACD (DEMA smoothed) (-191.820, -232.759)</p> <p>27 3 10 17 24 31 7 14 21 28 4 11 July August September</p>	<p>The Nifty bank too has been consolidating in a range which is 24420-23800 levels, so like Nifty till Banknifty doesn't provide any breakout or breakdown the traders can continue trading within this range. The momentum indicator however has come into buy mode which is quite positive for the bulls and that in fact keep the hopes alive that the breakout may happen on the higher side. The weekly indicators are in sell mode; hence the bulls shouldn't take aggressive long positions till there isn't a breakout on the upside. One thing which is quite significant is that once there is a breakout or breakdown from this range it will lead to a good trend on the either side. The short term resistance is 24420 whereas the short term support is pegged at 24000 levels.</p>



Thursday, August 31, 2017

INDIAN INDICES

INDICES	CLOSE	CHANGE	% CHG
SENSEX	31646	258.07	0.82
NIFTY	9884	88.35	0.90

TURNOVER & MARKET CAP

Rs. (Cr.)	YEST'DAY	PREV.DAY	% CHG
BSE Cash	3696	3633	1.72
NSE Cash	23256	23705	-1.89
Derivatives(bn)	7290	4825	51.09

INSTITUTIONAL ACTIVITIES

DII Equity	1391	476	192.14
FII Equity	-1460	-125	1070.15
FII F&O	-919	2880	-131.90

ADVANCES & DECLINES

EXCHANGE	ADV	DECLINES	TOTAL
BSE	1813	797	2610
NSE	1254	401	1655

INDIAN ADR's

ADR	CLOSE	PREV.CLOSE	% CHG
Infosys	15.31	15.27	-0.26
HDFC Bank	95.91	95.57	-0.35
Wipro	5.94	5.92	-0.34
ICICI Bank	9.38	9.39	0.11
Sterlite Inds.	22.25	22.20	-0.22
Dr. Reddy's Lab	31.76	31.73	-0.09

SECTORAL INDICES

BSE			NSE		
INDICES	CLOSE	%	INDICES	CLOSE	%
CNX Bank	24309	0.74	BSE MIDcap	15506	1.49
CNX IT	10493	-0.12	BSE SmallCap	15864	1.33
CNX Reality	277	1.69	BSE 200	4323	1.05
CNX FMCG	25758	0.89	OTHER IMP. DATA		
CNX Infra	3316	0.83	10 Yr Gsec yield	6.54	
CNX Pharma	8908	0.49	RS/\$	63.90	
BSE Auto	23603	0.63	\$ Index	92.47	
BSE Metal	13293	2.64	Brent Crude (\$)	51.56	
CNX MNC	13049	1.27	Gold (\$)	1311.08	
BSE 500	13716	1.08	Silver (\$)	17.43	
Nifty Midcap	4691	1.27	PE	CURRENT AVG	
BSE 100	10290	1.03	NIFTY	23.3	19.7

TOP OUTPERFORMERS

SENSEX			NIFTY	
SYMBOL	CLOSE	%	SYMBOL	CLOSE
JP Asso.	23.9	12.47	HINDALCO	236.4
Jindal Steel	137.1	4.38	GRASIM	1173.1
Hindalco	236.5	3.80	BPCL	521.0
SESA Goa	305.5	3.80	RELIANCE	1564.1
Reliance Inds.	1564.2	2.12	ULTRATECHCEM	4013.1

TOP UNDERPERFORMERS

SENSEX			NIFTY	
SYMBOL	CLOSE	%	SYMBOL	CLOSE
M&M	1360.1	-1.28	TECH MAHINDRA	425.8
NTPC	168.0	-0.30	BANK OF BARODA	139.5
Cipla/India	566.9	-0.19	HCL TECH	849.2
Infosys	926.7	-0.10	NTPC	168.0
SBI	276.9	0.07	DR REDDYS	2038.9

BSE 500

TOP OUTPERFORMERS			TOP UNDERPERFORMERS	
SYMBOL	CLOSE	%	SYMBOL	CLOSE
BF Utilities Ltd	372.1	14.76	Cera Sanitaryware Ltd	2876.6
Jaiprakash Associates Ltd	23.9	12.47	Religare Enterprises Ltd	53.6
Bombay Dyeing & Manufacturing Co	104.4	11.54	Mindtree Ltd	463.4
Kalpataru Power Transmission Ltd	379.7	9.12	AIA Engineering Ltd	1287.3
Adani Power Ltd	32.3	8.40	Westlife Development Ltd	245.6
Adani Enterprises Ltd	128.6	8.20	Tech Mahindra Ltd	425.7
Central Bank of India	84.1	7.61	Mahindra & Mahindra Ltd	1360.1
Ramco Systems Ltd	380.5	7.36	Syngene International Ltd	443.0
Fortis Healthcare Ltd	154.3	7.00	Care Ratings Ltd	1520.0
Adani Transmission Ltd	124.3	6.01	Kwality Ltd	150.0
Trident Ltd/India	99.4	5.80	Dhanuka Agritech Ltd	685.1
Asahi India Glass Ltd	381.4	5.71	IL&FS Transportation Networks Ltd	79.8
Equitas Holdings Ltd/India	168.6	5.57	DB Corp Ltd	370.2
PNB Housing Finance Ltd	1686.4	5.56	Thermax Ltd	879.8
Firstsource Solutions Ltd	38.2	5.53	Magma Fincorp Ltd	173.4
Essel Propack Ltd	279.7	5.43	Swan Energy Ltd	144.7
Majesco Ltd	419.9	5.40	Manpasand Beverages Ltd	810.2
Vakrangee Ltd	502.4	5.36	Shriram City Union Finance Ltd	2103.7
Godrej Properties Ltd	567.0	5.06	Suven Life Sciences Ltd	162.1
Jai Corp Ltd	82.3	4.84	Symphony Ltd	1241.5
Mangalore Refinery & Petrochemicals Ltd	132.4	4.83	Rallis India Ltd	227.2
JSW Steel Ltd	259.0	4.82	Jubilant Life Sciences Ltd	694.8
Jindal Steel & Power Ltd	137.1	4.38	Gateway Distriparks Ltd	224.0
Container Corp Of India Ltd	1311.1	4.22	Oracle Financial Services Software Ltd	3429.8
Dynamatic Technologies Ltd	2255.2	4.20	Caplin Point Laboratories Ltd	650.1



TRENDER+ OF NIFTY 50 STOCKS

SCRIP NAME	CLOSE	R 1	R 2	S 1	S 2	TRENDER+	PIVOT TABLE			
								NIFTY	SENSEX	BANK NIFTY
ACC Ltd	1811	1825	1840	1802	1792	UP				
Adani Ports & Special Econom	390	393	396	386	382	Flat				
Ambuja Cements Ltd	280	282	284	278	275	UP				
Asian Paints Ltd	1153	1161	1169	1145	1137	UP	HIGH	9909	31728	24384
Aurobindo Pharma Ltd	735	746	757	728	722	UP	LOW	9851	31533	24241
Axis Bank Ltd	504	508	512	501	498	UP	CLOSE	9884	31646	24309
Bajaj Auto Ltd	2751	2767	2783	2735	2719	Flat	PIVOT	9882	31636	24311
Bank of Baroda	139	141	143	138	137	Down	R 1	9912	31739	24381
Bharat Petroleum Corp Ltd	521	528	534	511	501	UP	R 2	9940	31831	24454
Bharti Airtel Ltd	429	431	434	427	425	Down	S 1	9854	31544	24239
Bharti Infratel Ltd	385	387	390	381	377	Flat	S 2	9823	31441	24169
Bosch Ltd	22465	23211	23958	21720	20974	Flat				
Cipla Ltd/India	566	573	580	563	559	Down				
Coal India Ltd	242	243	244	240	238	Flat				
Dr Reddy's Laboratories Ltd	2039	2065	2091	2022	2005	Down				
Eicher Motors Ltd	30984	31264	31544	30808	30631	Flat				
GAIL India Ltd	381	383	386	379	378	UP				
Grasim Industries Ltd	1173	1194	1215	1145	1117	UP				
HCL Technologies Ltd	849	857	865	842	835	Down				
HDFC Bank Ltd	1769	1776	1783	1756	1743	UP				
Hero MotoCorp Ltd	3988	4019	4049	3954	3919	UP				
Hindalco Industries Ltd	236	239	242	232	227	UP				
Hindustan Unilever Ltd	1204	1214	1223	1191	1178	UP				
Housing Development Finance	1759	1773	1787	1742	1724	UP				
ICICI Bank Ltd	300	302	304	299	298	UP				
Indiabulls Housing Finance Ltd	1208	1221	1235	1200	1192	Down				
Indian Oil Corp Ltd	453	459	466	442	431	UP				
IndusInd Bank Ltd	1656	1665	1675	1647	1637	Down				
Infosys Ltd	927	936	945	921	915	Flat				
ITC Ltd	282	283	284	281	280	UP				
Kotak Mahindra Bank Ltd	971	976	982	966	961	Down				
Larsen & Toubro Ltd	1140	1146	1152	1133	1127	Flat				
Lupin Ltd	988	996	1003	983	978	UP				
Mahindra & Mahindra Ltd	1358	1380	1402	1345	1332	UP				
Maruti Suzuki India Ltd	7557	7620	7683	7514	7470	Down				
NTPC Ltd	168	171	174	165	163	Down				
Oil & Natural Gas Corp Ltd	158	159	160	158	157	Down				
Power Grid Corp of India Ltd	216	217	219	214	213	Down				
Reliance Industries Ltd	1564	1575	1586	1547	1531	Flat				
State Bank of India	277	279	281	275	274	UP				
Sun Pharmaceutical Industries	484	488	492	481	477	UP				
Tata Consultancy Services Ltd	2485	2496	2508	2466	2448	Down				
Tata Motors Ltd	221	223	224	219	218	Down				
Tata Motors Ltd	379	382	385	376	374	Down				
Tata Power Co Ltd/The	78	78	79	77	77	Down				
Tata Steel Ltd	639	642	645	635	631	UP				
Tech Mahindra Ltd	426	433	440	422	418	Down				
UltraTech Cement Ltd	4013	4040	4067	3971	3928	UP				
Wipro Ltd	291	292	293	291	290	UP				
Yes Bank Ltd	1752	1768	1783	1734	1715	Flat				
Zee Entertainment Enterprises	520	524	528	514	508	UP				



HOW TO TRADE USING THE TRENDER+

CLOSING PRICES

Closing price is the price at which scrip closes on the date mentioned in the report. Traders may initiate their intraday trade on this level. The stock or index should sustain above or below the pivot else you should exit the trade.

TREND

Trend is the level at which the tendency of stocks can be identified. For best results, you can use the 'trender' to trade. A 'weak' trend denoted by "DOWN" means that traders can trade with a negative bias. If the trend is 'strong', denoted by "UP", one can trade with a positive bias on the long side. Base price should be the pivot point price.

IF THE TREND IS UP

Ideally, for a buy position, buy at the pivot point and use S1 as the stop loss for a target of levels around R2 and higher.

IF THE TREND IS DOWN

Ideally, for a sell position, sell at the pivot point and use R1 as a stop loss and S2 or lower levels as a target level.

TRENDER + : This is a broad based technical trend of the stock prevalent, may or may not be necessarily for the day.

DAILY PROJECTED RANGE : Projected Daily high and low are indicative range for the day, if the price moves out of the range the trend in that side may accelerate and turn bullish or bearish.

THE TREND AND THE DAILY PROJECTED RANGE IS BASED ON CERTAIN SIMPLE CALCULATIONS WHICH IS PROVIDED BY BLOOMBERG, EXCLUSIVELY USED BY ANAND RATHI

Disclaimer-This report has been issued by Anand Rathi Share and Stock Brokers Limited (ARSSBL), which is regulated by SEBI. The information herein was obtained from various sources; we do not guarantee its accuracy or completeness. Neither the information nor any opinion expressed constitutes an offer, or an invitation to make an offer, to buy or sell any securities or any options, futures or other derivatives related to such securities ("related investments"). ARSSBL and its affiliates may trade for their own accounts as market maker / jobber and/or arbitrageur in any securities of this issuer(s) or in related investments, and may be on the opposite side of public orders. ARSSBL, its affiliates, directors, officers, and employees may have a long or short position in any securities of this issuer(s) or in related investments. ARSSBL or its affiliates may from time to time perform investment banking or other services for, or solicit investment banking or other business from, any entity mentioned in this report. This research report is prepared for private circulation. It does not have regard to the specific investment objectives, financial situation and the particular needs of any specific person who may receive this report. Investors should seek financial advice regarding the appropriateness of investing in any securities or investment strategies discussed or recommended in this report and should understand that statements regarding future prospects may not be realized. Investors should note that income from such securities, if any, may fluctuate and that each security's price or value may rise or fall. Past performance is not necessarily a guide to future performance. Foreign currency rates of exchange may adversely affect the value, price or income of any security or related investment mentioned in this report.

ANAND RATHI SHARE AND STOCK BROKERS LIMITED

4 th Floor , Silver Metropolis, Jaicoach Compound Opposite Bimbisar Nagar, Goregaon(East), Mumbai - 400063.

Tel No: +91 22 4001 3700 | Fax No: +91 22 4001 3770 | Website: www.rathi.com