

# Technical Report

## Closing Brief

Nifty witnessed a range bound movement The benchmark index ended the volatile session on an absolutely flat note, erasing all its morning gains to close at 9630 for the day.

## Technical Build up

- ❖ Shooting Star candle with increase in volume
- ❖ Sell crossover in oscillators.
- ❖ Upper band of Bollinger exist at 9746
- ❖ Crucial moving average of 20/50 SMA are at 9609 and 9427
- ❖ 200 SMA trend deciding level exist at 8802

## Outlook for the day

Indian Equity market traded volatile for the second day in a row and closed flat in the end. Sebi relaxed entry norms for overseas investors, rationalized 'fit and proper' criteria as also simplified other requirements, they also decided to expand eligible jurisdiction for grant of FPI registration by including countries with diplomatic tie-ups with India which provided the initial rally the previous day but soon paired gains and ended flat. On the technical front, Nifty formed a Shooting Star Candle on the daily chart and closed below its crucial support level of 9,650. Nifty continues to trade in the range and therefore, support remains at 9600-9620 while resistance comes in at 9700-9710 for the coming session. On the option front maximum Put OI is at 9600 and 9500 strike while maximum Call OI is at 9700 and 9800 strike.

## Technical & Derivative Report

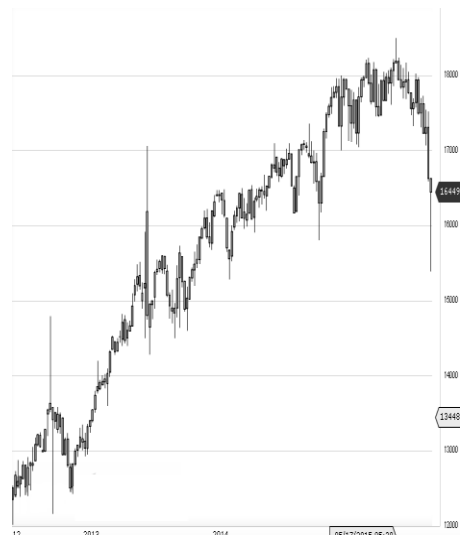
World Indices	LTP	Daily Ch(Pts)	Daily Ch(%)
Dow Jones	21397	-12	-0.06
Nasdaq	6236	2	0.04
S&P 500	2434	-1	-0.05
FTSE 100	7439	-8	-0.11
DAX	12794	19	0.15
Hang Seng	25698	23	0.09
Nikkei	20107	-3	-0.02
Sensex	31290	7	0.02
Nifty	9630	-3	-0.04

Commodity /Forex	LTP	Daily Ch(Pts)	Daily Ch(%)
Gold (\$/Oz)	1251.30	1.90	0.15
Silver (\$/Oz)	16.64	0.07	0.40
Copper(USD/lb.)	260.30	-0.70	-0.27
Brent Crude(USD/bbl)	45.33	0.11	0.24
USD/INR	64.59	0.07	0.11
USD/YEN	111.34	0.01	0.01
USD/EUR	1.1154	0.0002	0.02

Support/Resistance levels for Indian Equity Indices					
	S1	S2	CMP	R1	R2
Sensex	31190	31090	31290	31425	31590
Nifty	9600	9570	9630	9670	9720
Nifty (Fut)	9605	9575	9633	9675	9725

Pivot Level					
Sensex					
Nifty				9648	

**US:** US market closed mixed on Thursday, with the health care sector posting strong gains. Technically DJIA is presently trading at the 5th leg through Elliot wave count with negative divergence in oscillators.



### Increase in OI with Increase in Price (Long Buildup)

Symbol	Prev OI	Curr OI	OI Chg (%)	Curr Pr.	Pr.Chg (%)
OFSS	106950	115950	8.4	3695	0.8
MCX	1400000	1454000	3.9	1111	0.9
	1374300	1421100			
RDEL	0	0	3.4	60.45	6.1
TATAPO	2223900	2265300			
WER	0	0	1.9	82.6	0.9
GODFRY					
PHLP	576500	580500	0.7	1284.8	3.5

### Increase in OI with Decrease in Price (Short Buildup)

Symbol	Prev OI	Curr OI	OI Chg (%)	Curr Pr.	Pr.Chg (%)
	3604500	3877000			
DLF	0	0	7.6	195.4	[1.0]
CHOLAF					
IN	501000	527000	5.2	1087.2	[3.0]
HINDAL	3942400	4145750			
CO	0	0	5.2	191.65	[2.9]
MRPL	4320000	4477500	3.7	122.8	[1.3]
OIL	2028070	2098316	3.5	282.8	[1.5]

Nifty declined by 0.03% with Nifty future shaded 0.1 lakh shares in open interest and stock future added 408.9 Lakh shares in open interest.

- Nifty PCR decreased to 1.17 from 1.22
- Total Nifty Calls added 22.6 lakh shares in open interest.
- Total Nifty Puts shaded 4.4 lakh shares in open interest.
- Maximum open interest (Nifty) in Calls for May series is at 9700 and 9500 put.
- FII's bought net Rs. 192.68 Cr(provisional), while DIIs bought net Rs.455.21 Cr in cash market.
- FII bought net Rs.626.61 Cr in F&O
- Securities in Ban Period: ALBK, BANKINDIA, FORTIS, GMRINFRA, HDIL, IBREALEST, IFCI, INFIBEAM, KSCL, ORIENTBANK, RCOM, UJJIVAN & WOCKPHARMA

## Nifty Tracker

PARTICULARS	22/06/2017	21/06/2017	20/06/2017	19/06/2017
Spot	9630	9633	9653.5	9657.55
% Change in Spot	-0.03%	-0.21%	-0.04%	0.72%
Nifty(FUT) June	9633.1	9655.25	9674.45	9675.25
Nifty(FUT) June Vol.	120638	76942	47126	95051
Nifty(FUT) June - OI	20367600	20995575	21072225	21115650
Nifty(FUT) July	9652.15	9671.4	9692.4	9694.7
Nifty(FUT) July Vol.	19277	6443	3757	5558
Nifty(FUT) July - OI	2493675	1966950	1889400	1834275

## Trade Statistics for 22/06/2017

PARTICULARS	NO. OF CONTRACTS	TURNOVER (RS. CR.)	PUT CALL RATIO
NSE Index Futures	2,23,108	18001	-
NSE Stock Futures	7,42,672	53189	-
NSE Index Options	1,05,50,536	9,42,300.86	-
NSE Stock Options	4,98,947	36965	0.46
NSE F&O Total Turnover	1,20,15,263	1,050,456	0.9
NSE Cash Turnover	-	26,262.87	-
BSE Cash Turnover	-	4693.41	-
Total Turnover	-	1081412	-

## FII Corner (F&O)

FII NET BUYING/SELLING & CHANGE IN OPEN INTEREST (Cr. Rupee)						
PARTICULARS	22/06/2017		21/06/2017		20/06/2017	
	Net Buying /Selling	Change In Open interest	Net Buying /Selling	Change In Open interest	Net Buying /Selling	Change In Open interest
Index Future	89	-163	-91	498	321	134
Index option	594	539	1144	1278	344	1005
Stock Future	-101	-699	-1100	541	-480	757
Stock option	45	-28	-43	110	-21	164
Total	627	-351	-90	2427	164	2060

## Market Open Interest

ADDITION/REDUCTION IN MARKET OPEN INTEREST					
Contracts	22/06/2017	21/06/2017	20/06/2017	19/06/2017	16/06/2017
Index Futures	129	-160	42	155	-539
Index Options	-412	1517	1094	1735	464
Stock Futures	14978	9274	5121	1943	-23838
Stock Options	386	479	536	489	539
F&O Total	15082	11111	6792.62	4321.73	-23374.94

## Nifty Option Open Interest Statistics

NIFTY OPTIONS HIGHEST ADDITION IN OPEN INTEREST						
Expiry	Strike	Option Type	Settlement Price	Volume	Open Interest	Change In OI
27-Jul-17	9800	CE	51.75	33906	1653300	431625
27-Jul-17	9400	PE	45.15	20503	2317500	318075
29-Jun-17	9800	CE	5.7	228675	4851450	302325
27-Jul-17	9800	PE	195	10382	652125	271875
29-Jun-17	9650	CE	38.15	67808	1533000	242925
27-Jul-17	9700	CE	88.9	24047	1386825	240825
29-Jun-17	9700	CE	22.3	396263	6950100	221175
29-Jun-17	9900	CE	1.55	60096	3181800	221100
29-Jun-17	9750	CE	10.4	101872	1510725	213000
27-Jul-17	10000	CE	13.8	23005	1639275	171000

NIFTY OPTIONS HIGHEST REDUCTION IN OPEN INTEREST						
Expiry	Strike	Option Type	Settlement Price	Volume	Open Interest	Change In OI
29-Jun-17	9600	PE	35.95	402958	5429775	-1106550
29-Jun-17	9500	PE	15.2	230696	5539050	-322275
29-Jun-17	9550	PE	22.35	76112	882150	-203175
29-Jun-17	9600	CE	67.6	148802	3479250	-190125
29-Jun-17	10000	PE	361.55	2896	591075	-137925
27-Jul-17	9200	PE	22.9	19921	1279650	-125250
29-Jun-17	9650	PE	55.55	107800	1313850	-112650
29-Jun-17	9200	PE	2.35	17847	2788600	-112200
27-Jul-17	9500	PE	64.9	20289	1202475	-111525
29-Jun-17	9500	CE	144.95	14859	1649775	-95175

## Stock Option Open Interest Statistics

STOCK OPTIONS WITH HIGHEST ADDITION IN OPEN INTEREST							
Symbol	Expiry	Strike	Option Type	Settl. Price	Volume	Open Interest	Change in OI
GMRINFRA	29-Jun-17	22.5	CE	0.25	2215	30510000	2835000
GMRINFRA	29-Jun-17	20	PE	0.3	636	12420000	2430000
GMRINFRA	27-Jul-17	25	CE	0.45	86	5400000	1755000
FEDERALBNK	27-Jul-17	115	CE	6.85	151	1650000	1595000
FORTIS	29-Jun-17	270	CE	0.25	977	1520100	1520100
GMRINFRA	29-Jun-17	25	CE	0.05	499	20250000	1485000
GMRINFRA	29-Jun-17	22.5	PE	1.9	68	2790000	1395000
SUZLON	27-Jul-17	20	CE	0.6	220	5100000	1320000
HINDALCO	29-Jun-17	200	CE	1.2	3055	4438000	1176000
ONGC	29-Jun-17	165	CE	0.95	851	2025000	1095000

STOCK OPTIONS WITH HIGHEST REDUCTION IN OPEN INTEREST							
Symbol	Expiry	Strike	Option Type	Settl. Price	Volume	Open Int.	Change in OI
JPASSOCIAT	29-Jun-17	17.5	CE	0.35	350	7548000	-4692000
JPASSOCIAT	29-Jun-17	15	CE	1.65	133	13532000	-4624000
GMRINFRA	29-Jun-17	20	CE	1.15	642	15975000	-1800000
SBIN	29-Jun-17	290	CE	6.3	2459	3051000	-1362000
FEDERALBNK	29-Jun-17	115	CE	3.45	197	1144000	-1111000
RCOM	29-Jun-17	20	CE	0.75	221	7332000	-1104000
JPASSOCIAT	29-Jun-17	15	PE	0.2	86	2720000	-1088000
JPASSOCIAT	27-Jul-17	2.5	PE	0.05	15	0	-1020000
RCOM	29-Jun-17	30	CE	0.05	74	4704000	-888000
IFCI	29-Jun-17	30	CE	0.05	41	10142000	-880000

## Research Team

Name	Designation	Email ID	Contact No.
Paras Bothra	President Equity Research	paras@ashikagroup.com	+91 22 6611 1704
Krishna Kumar Agarwal	Equity Research Analyst	krishna.a@ashikagroup.com	+91 33 4036 0646
Partha Mazumder	Equity Research Analyst	partha.m@ashikagroup.com	+91 33 4036 0647
Arijit Malakar	Equity Research Analyst	amalakar@ashikagroup.com	+91 33 4036 0644
Kapil Jagasia, CFA	Equity Research Analyst	kapil.j@ashikagroup.com	+91 22 6611 1715
Tirthankar Das	Technical & Derivative Analyst	tirthankar.d@ashikagroup.com	+91 33 4036 0645

Ashika Stock Broking Limited ("ASBL") or Research Entity has started its journey in the year 1994 and is engaged in the business of broking services, depository services, distributor of financial products (Mutual fund, IPO & Bonds). This research report has been prepared and distributed by ASBL in the sole capacity of a Research Analyst (Reg No. INH00000206) of SEBI (Research Analyst) Regulations 2014. ASBL is a wholly owned subsidiary of Ashika Global Securities (P) Ltd., a RBI registered non-deposit taking NBFC Company. Ashika group (details is enumerated on our website [www.ashikagroup.com](http://www.ashikagroup.com)) is an integrated financial service provider inter alia engaged in the business of Investment Banking, Corporate Lending, Commodity Broking, Debt Syndication & Other Advisory Services.

There were no significant and material disciplinary actions against ASBL taken by any regulatory authority during last three years.

### Disclosure

ASBL or its associates, its Research Analysts (including their relatives) may have financial interest in the subject company(ies). However, the said financial interest is not limited to having an open stock market position in /acting as advisor to /having a loan transaction with the subject company(ies) apart from registration as clients.

- ASBL or its Research Analysts (including their relatives) do not have any actual / beneficial ownership of 1% or more of securities of the subject company(ies) at the end of the month immediately preceding the date of publication of this report or date of the public appearance. However ASBL's associates may have actual / beneficial ownership of 1% or more of securities of the subject company(ies).
- ASBL or their Research Analysts (including their relatives) do not have any other material conflict of interest at the time of publication of this research report or date of the public appearance. However ASBL's associates might have an actual / potential conflict of interest (other than ownership).
- ASBL or its associates may have received compensation for investment banking, merchant banking, and brokerage services and for other products and services from the subject companies during the preceding 12 months. However, ASBL or its associates or its Research analysts (forming part of Research Desk) have not received any compensation or other benefits from the subject companies or third parties in connection with the research report. Moreover, Research Analysts have not received any compensation from the companies mentioned herein in the past twelve months.
- ASBL or their Research Analysts have not managed or co-managed public offering of securities for the subject company(ies) in the past twelve months. However ASBL's associates may have managed or co-managed public offering of securities for the subject company(ies) in the past twelve months.
- Research Analysts have not served as an officer, director or employee of the companies mentioned in the report.
- Neither ASBL nor its Research Analysts have been engaged in market making activity for the companies mentioned in the report.

### Disclaimer

The research recommendation and information herein are solely for the personal information of the authorized recipient and does not construe to be an offer documents or any investment, legal or taxation advice or solicitation of any action based upon it. This report is not for public distribution or use by any person or entity, where such distribution, publication, availability or use would be contrary to law, regulation or subject to any registration or licensing requirement. We will not treat recipients as customer by virtue of their receiving this report. The report is based upon the information obtained from public sources that we consider reliable, but we do not guarantee its accuracy or completeness. ASBL shall not be in anyways responsible for any loss or damage that may arise to any such person from any inadvertent error in the information contained in this report. The recipients of this report should rely on their own investigations.