

# Technical Report

## Closing Brief

The index breached the 8200 mark and ending with a substantial gain of 1.01% closing the day at 8224.50. supported by Bank Nifty that remained subdued since the beginning of this week.

## Technical Build up

- ❖ Bullish candle with increase in volume
- ❖ Buy crossover in oscillators.
- ❖ Lower band of Bollinger exist at 7819
- ❖ Crucial moving average of 20/50 SMA are at 8231 and 8508
- ❖ 200 SMA trend deciding level exist at 8155

## Outlook for the day

Indian Equity market gained over a percent on Wednesday and reclaimed 8200 mark, thanks to favourable domestic cues and supportive global markets. The easing of demonetisation impact, appreciation in rupee, positive global cues and hopes of oil production cut by OPEC boosted the market sentiment. On the technical front, Nifty moved higher and reclaimed 8200 led. Market breadth improved and the Index formed bullish candle in followed by positive break in RSI above 44.77. Shifting base higher, 8125 is likely to act as immediate support, sustaining above the same would keep price structure positive. On the higher side, it could test 8320 (i.e. 38.2% retracement level of the entire down move of 8969-7916 levels). The respite could be a short term phenomena hence shall not be considered as a buying opportunity for the long term as the broader trend remains weak. On the option front data shows 8000 as highest put concentration while minor unwinding was seen in 8300 CE. Option Indicative band is 8000-8300.

## Technical & Derivative Report

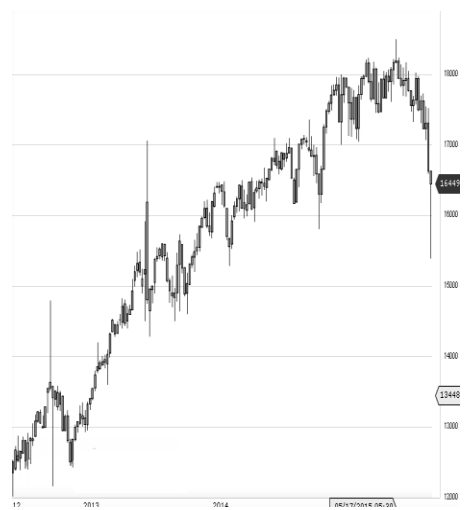
World Indices	LTP	Daily Ch(Pts)	Daily Ch(%)
Dow Jones	19123	1	0.01
Nasdaq	5323	-56	-1.05
S&P 500	2198	-5	-0.27
FTSE 100	6783	11	0.17
DAX	10640	19	0.19
Hang Seng	22964	174	0.77
Nikkei	18737	428	2.34
Sensex	26652	258	0.98
Nifty	8224	82	1.01

Commodity /Forex	LTP	Daily Ch(Pts)	Daily Ch(%)
Gold (\$/Oz)	1168.80	-5.10	-0.43
Silver (\$/Oz)	16.40	-0.08	-0.50
Copper(USD/lb.)	263.70	0.40	0.15
Brent Crude(USD/bbl)	50.47	4.09	8.82
USD/INR	68.38	-0.26	-0.39
USD/YEN	114.44	-0.02	-0.02
USD/EUR	1.0594	0.0005	0.05

Support/Resistance levels for Indian Equity Indices					
	S1	S2	CMP	R1	R2
Sensex	26440	26240	26652	26770	26900
Nifty	8160	8100	8224	8260	8300
Nifty (Fut)	8195	8135	8260	8295	8335

Pivot Level	
Sensex	26576
Nifty	8199

**US:** US market closed mixed on Wednesday, the last day of the month, as energy stocks surging on an OPEC deal to cut production, while investors digested solid economic data. Technically DJIA is presently trading at the 5th leg through Elliot wave count with negative divergence in oscillators.



Increase in OI with Increase in Price (Long Buildup)						Increase in OI with Decrease in Price (Short Buildup)					
Symbol	Prev OI	Curr OI	OI Chg (%)	Curr Pr.	Pr.Chg (%)	Symbol	Prev OI	Curr OI	OI Chg (%)	Curr Pr.	Pr.Chg (%)
ULTRAC						IDFCBA					
EMCO	7956	13996	75.9	3591.1	1.9	NK	3601	7702	113.9	68.85	[2.9]
MRF	1634	2017	23.4	50093	1.7	HINDPE					
ASIANP						TRO	8846	12704	43.6	465	[2.3]
AINT	6749	8225	21.9	968	0.8	BPCL	9502	13432	41.4	643.05	[0.3]
CROMP						TORNTN					
GREAV	554	668	20.6	77.6	4.9	HARM	543	746	37.4	1388	[1.1]
PAGEIN						APOLLO					
D	740	867	17.2	13379.95	4.7	HOSP	1139	1475	29.5	1198	[2.5]

Nifty gained by 1.01% with Nifty future added 5.9 lakh shares in open interest and stock future added 388.8 Lakh shares in open interest.

- Nifty PCR increased to 1.04 from 1.02
- Total Nifty Calls added 8.6 lakh shares in open interest.
- Total Nifty Puts added 19.5 lakh shares in open interest.
- Maximum open interest (Nifty) in Calls for Oct series is at 8300 and 8000 put.
- FII's sold net Rs.434.42 Cr(provisional), while DIIs bought net Rs.676.68 Cr in cash market.
- FII bought net Rs.1547.83 Cr in F&O
- Securities in Ban Period: NIL

## Nifty Tracker

PARTICULARS	30/11/2016	29/11/2016	28/11/2016	26/11/2016
Spot	8224.5	8142.15	8126.9	8114.3
% Change in Spot	1.01%	0.19%	0.16%	1.87%
Nifty(FUT) Dec	8260.35	8172.05	8150.6	8126.35
Nifty(FUT) Dec Vol.	141525	134021	120167	162248
Nifty(FUT) Dec - OI	15600150	15091950	14752575	14147625
Nifty(FUT) Jan	8294.6	8202.2	8176.9	8154.35
Nifty(FUT) Jan Vol.	3948	5592	3813	3912
Nifty(FUT) Jan - OI	1087350	1044525	1081800	1007475

## Trade Statistics for 30/11/2016

PARTICULARS	NO. OF CONTRACTS	TURNOVER (RS. CR.)	PUT CALL RATIO
NSE Index Futures	2,54,727	17048	-
NSE Stock Futures	5,07,839	34490	-
NSE Index Options	42,14,418	2,96,669.83	-
NSE Stock Options	2,21,325	15573	0.45
NSE F&O Total Turnover	51,98,309	363,780	0.96
NSE Cash Turnover	-	31,509.19	-
BSE Cash Turnover	-	2,590.67	-
Total Turnover	-	397880	-

## FII Corner (F&O)

FII NET BUYING/SELLING & CHANGE IN OPEN INTEREST (Cr. Rupee)						
PARTICULARS	30/11/2016		29/11/2016		28/11/2016	
	Net Buying /Selling	Change In Open interest	Net Buying /Selling	Change In Open interest	Net Buying /Selling	Change In Open interest
Index Future	659	416	615	743	-123	780
Index option	481	2438	1426	2480	1622	4166
Stock Future	371	2322	833	773	753	815
Stock option	38	400	13	538	22	625
Total	1549	5576	2887	4535	2274	6387

## Market Open Interest

ADDITION/REDUCTION IN MARKET OPEN INTEREST					
Contracts	30/11/2016	29/11/2016	28/11/2016	26/11/2016	25/11/2016
Index Futures	286	556	570	-10357	2600
Index Options	2339	836	1338	-13410	3105
Stock Futures	6046	7165	8651	-81078	12591
Stock Options	642	1177	1661	-14672	696
F&O Total	9314	9734	12219.95	-119517.42	18992.42

## Nifty Option Open Interest Statistics

NIFTY OPTIONS HIGHEST ADDITION IN OPEN INTEREST						
Expiry	Strike	Option Type	Settlement Price	Volume	Open Interest	Change In OI
29-Dec-16	8100	PE	78.8	104750	3145125	434775
29-Dec-16	8400	CE	63.25	82988	3791700	360450
29-Dec-16	8200	PE	107.4	68751	2911725	303975
25-Jan-17	8000	PE	91.15	6071	766425	204225
29-Dec-16	8700	CE	7.6	25441	2373725	204000
29-Dec-16	8300	PE	147.65	22989	2144625	177750
29-Dec-16	8000	PE	57.65	116815	7395050	176850
29-Dec-16	8600	CE	16.25	38704	2280225	140775
25-Jan-17	8500	PE	284.6	2438	482475	123450
25-Jan-17	8400	PE	229.35	2065	396825	108300

NIFTY OPTIONS HIGHEST REDUCTION IN OPEN INTEREST						
Expiry	Strike	Option Type	Settlement Price	Volume	Open Interest	Change In OI
29-Dec-16	8500	PE	272.15	6660	1949700	-142050
29-Dec-16	7900	CE	394.5	4268	670650	-141750
29-Dec-16	8000	CE	311.55	8530	2835750	-128475
29-Dec-16	7600	PE	17.2	32726	1806750	-124050
29-Dec-16	7300	PE	7.5	6424	746025	-43275
29-Dec-16	7700	PE	22.95	32605	2364150	-39525
29-Dec-16	8100	CE	231.9	29535	1728750	-37800
29-Dec-16	8900	CE	2.35	9032	922275	-30150
29-Jun-17	9300	PE	940	400	102500	-30000
29-Dec-16	9000	CE	1.95	14285	2849775	-28725

## Stock Option Open Interest Statistics

STOCK OPTIONS WITH HIGHEST ADDITION IN OPEN INTEREST							
Symbol	Expiry	Strike	Option Type	Settl. Price	Volume	Open Interest	Change in OI
ADANIPOWER	29-Dec-16	32.5	CE	0.4	283	2880000	1920000
IDFCBANK	29-Dec-16	70	CE	2.25	433	1992000	1512000
GMRINFRA	29-Dec-16	12.5	CE	0.45	178	6525000	1215000
ADANIPOWER	29-Dec-16	30	CE	0.95	873	5200000	1200000
JPASSOCIAT	29-Dec-16	10	CE	0.1	49	6528000	1020000
RECLTD	29-Dec-16	150	CE	1.8	470	1722000	786000
ICICIBANK	29-Dec-16	260	PE	7.75	1485	1520000	612500
IDFCBANK	29-Dec-16	75	CE	0.8	203	1600000	600000
RCOM	29-Dec-16	35	PE	0.7	161	2020000	570000
IDFCBANK	29-Dec-16	65	PE	1.45	149	720000	544000

STOCK OPTIONS WITH HIGHEST REDUCTION IN OPEN INTEREST							
Symbol	Expiry	Strike	Option Type	Settl. Price	Volume	Open Int.	Change in OI
ICICIBANK	29-Dec-16	250	PE	4.45	1387	1177500	-527500
JISLJALEQS	29-Dec-16	100	CE	1.6	178	882000	-423000
RECLTD	29-Dec-16	145	CE	2.9	479	1098000	-384000
RECLTD	29-Dec-16	135	PE	4.4	129	672000	-372000
NHPC	29-Dec-16	30	CE	0.5	75	5562000	-351000
TV18BRDCST	29-Dec-16	45	CE	0.2	35	867000	-272000
TATAPOWER	29-Dec-16	75	CE	2.3	556	1170000	-252000
SBIN	29-Dec-16	250	PE	6.25	1482	1737000	-249000
ADANIPOWER	29-Dec-16	27.5	CE	2.15	268	2880000	-240000
SBIN	29-Dec-16	280	CE	3.55	1081	2505000	-234000

Name	Designation	Email ID	Contact No.
Paras Bothra	President Equity Research	paras@ashikagroup.com	+91 22 6611 1704
Krishna Kumar Agarwal	Equity Research Analyst	krishna.a@ashikagroup.com	+91 33 4036 0646
Partha Mazumder	Equity Research Analyst	partha.m@ashikagroup.com	+91 33 4036 0647
Arijit Malakar	Equity Research Analyst	amalakar@ashikagroup.com	+91 33 4036 0644
Chanchal Bachhawat	Equity Research Analyst	chanchal.bachhawat@ashikagroup.com	+91 22 6611 1712
Tirthankar Das	Technical & Derivative Analyst	tirthankar.d@ashikagroup.com	+91 33 4036 0645

SEBI Registration No. INH000000206

#### Disclosure

The Research Analysts and /or Ashika Stock Broking Limited do hereby certify that all the views expressed in this research report accurately reflect their views about the subject issuer(s) or securities. Moreover, they also certify the followings:-

- The Research Analyst or Ashika Stock Broking Limited or his/its Associates or his/its relative, has any financial interest in the subject company (ies) covered in this report. **Yes**
- The Research Analyst or Ashika Stock Broking Limited or his/its Associates or his/its relative, have actual/beneficial ownership of 1% or more in the subject company, at the end of the month immediately preceding the date of the publication of the research report. **No**
- The Research Analyst or Ashika Stock Broking Limited or his/its Associates or his/its relatives has any material conflict of interest at the time of publication of the research report. **No**
- The Research Analyst or Ashika Stock Broking Limited or his/its Associates have received any compensation or compensation for investment banking or merchant banking or brokerage services or for product other than for investment banking or merchant banking or brokerage services from the companies covered in this report in the past 12 months. **No**
- The Research Analyst or Ashika Stock Broking Limited or his/its Associates have managed or co managed in the previous 12 months any private or public offering of securities for the company (ies) covered in this report. **No**
- The Research Analyst or Ashika Stock Broking Limited or his/its Associates have received any compensation or other benefits from the company (ies) covered in this report or any third party in connection with the Research Report. **No**
- The Research Analyst has served as an officer, director or employee of the company (ies) covered in the research report. **No**
- The Research Analyst or Ashika Stock Broking Limited has been engaged in Market making activity of the company (ies) covered in the research report. **No**

#### Disclaimer

This report is for the personal information of the authorized recipient and does not construe to be any investment, legal or taxation advice to you. Ashika Stock Broking Ltd. is not soliciting any action based upon it. This report is not for public distribution and has been furnished to you solely for your information and should not be reproduced or redistributed to any other person in any form. The report is based upon information that we consider reliable, but we do not represent that it is accurate or complete, and it should not be relied upon such. Ashika Stock Broking Ltd. or any of its affiliates or employees shall not be in anyway responsible for any loss or damage that may arise to any person from any inadvertent error in the information contained in this report. Ashika Stock Broking Ltd. or any of its affiliates or employees do not provide at any time, any express or implied