

# Technical Report

## Closing Brief

Market recorded a new all time high in the last hour rally ahead of RBI credit policy. Nifty closed at 10,077.10 up by 37.55 points or 0.37%. Investors turned cautious as market is hovering near its all time high. However, Auto stocks gained the most, fuelled by positive Auto sales data

## Technical Build up

- ❖ Hanging Man candle with decrease in volume
- ❖ Buy crossover in oscillators.
- ❖ Upper band of Bollinger exist at 10150
- ❖ Crucial moving average of 20/50 SMA are at 9887 and 9708
- ❖ 200 SMA trend deciding level exist at 8950

## Outlook for the day

Indian Equity market managed to close with decent gains in a dull trading session yesterday, thanks to late hour buying mainly in rate sensitive counters. Good quarterly results, impressive July Auto monthly sales data and above normal monsoon have a positive sentiment in the market. On the technical front, Nifty formed 'Hanging Man' pattern which is a bearish reversal candlestick pattern and is usually formed at the end of an uptrend. Although, the pattern still needs confirmation. The monthly chart too, indicates that nifty has now finally reached the 'Upward Sloping trend Line' level of 10140-10160. This coincides with the 100% 'Price Extension' of the previous up move from 7893.80. While on the downside it has been respecting to its rising support trend line by connecting the recent swing lows of 9543, 9646, 9838 and 9944. Hence with yesterday's momentum and upcoming RBI policy, Bulls may aggrandize their gains but likely to face hurdle around 10150 – 10200 levels. RSI and STOCHASTIC remain in overbought conditions, marking possible consolidation on cards. Going ahead immediate support around 10060 levels and next support is at 10000 levels. Immediate resistance is there around 10130 and next resistance is around 10200. On the option front maximum Put OI is at 10000 followed by 9800 strike while maximum Call OI is at 10500 followed by 10400 strike.

## Technical & Derivative Report

World Indices	LTP	Daily Ch(Pts)	Daily Ch(%)
Dow Jones	21963	72	0.33
Nasdaq	6362	14	0.23
S&P 500	2476	6	0.24
FTSE 100	7423	51	0.70
DAX	12251	133	1.10
Hang Seng	27654	114	0.42
Nikkei	20067	81	0.41
Sensex	32575	60	0.19
Nifty	10114	37	0.37

Commodity /Forex	LTP	Daily Ch(Pts)	Daily Ch(%)
Gold (\$/Oz)	1272.60	-6.80	-0.53
Silver (\$/Oz)	16.62	-0.14	-0.86
Copper(USD/lb.)	287.65	-0.45	-0.16
Brent Crude(USD/bbl)	51.43	-0.35	-0.68
USD/INR	64.08	-0.10	-0.17
USD/YEN	110.54	0.18	0.16
USD/EUR	1.1801	-0.0001	-0.01

Support/Resistance levels for Indian Equity Indices					
	S1	S2	CMP	R1	R2
Sensex	32395	32190	32575	32700	32860
Nifty	10060	10000	10114	10150	10200
Nifty (Fut)	10085	10025	10138	10175	10225

Pivot Level					
Sensex			32556		
Nifty			10103		

**US:** US market closed higher on Tuesday, the first trading day of August, as the Dow Jones industrial average approached another milestone. Technically DJIA is presently trading at the 5th leg through Elliot wave count with negative divergence in oscillators.

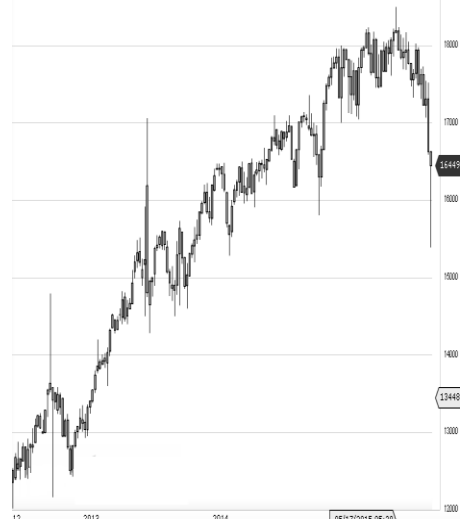


### Increase in OI with Increase in Price (Long Buildup)

Symbol	Prev OI	Curr OI	OI Chg (%)	Curr Pr.	Pr.Chg (%)
CHENNP					
ETRO	1383000	2071500	49.8	398.05	7.9
		1132890			
TECHM	8279700	0	36.8	402.8	4.1
HEROM					
OTOC	907600	1200400	32.3	3757.5	2.3
VOLTAS	3026000	3784000	25.1	529.9	5.2
EICHER					
MOT	106100	129775	22.3	31622	4.7

### Increase in OI with Decrease in Price (Short Buildup)

Symbol	Prev OI	Curr OI	OI Chg (%)	Curr Pr.	Pr.Chg (%)
MARICO	2839200	5395000	90	326.75	[2.6]
TORNTP					
OWER	3681000	6168000	67.6	183.3	[0.1]
GODREJ					
CP	1452000	1952800	34.5	969.5	[6.7]
		2514750			
PNB	0	0	16.5	158.3	[3.2]
PCJEW					
LLER	5886000	6711000	14	254.2	[1.2]



Nifty gained by 0.37% with Nifty future added 2.5 lakh shares in open interest and stock future added 598.0 Lakh shares in open interest.

- Nifty PCR increased to 1.31 from 1.28
- Total Nifty Calls added 6.9 lakh shares in open interest.
- Total Nifty Puts added 23.9 lakh shares in open interest.
- Maximum open interest (Nifty) in Calls for July series is at 10500 and 10000 put.
- FII's sold net Rs.945.83 Cr(provisional), while DIIs bought net Rs.1390.65 Cr in cash market.
- FII soldnet Rs.689.50 Cr in F&O
- Securities in Ban Period: IBREALEST, JPASSOCIST & JSWENERGY

## Nifty Tracker

PARTICULARS	01/08/2017	31/07/2017	28/07/2017	27/07/2017
Spot	10114.65	10077.1	10014.5	10020.55
% Change in Spot	0.37%	0.63%	-0.06%	0.00%
Nifty(FUT) Aug	10138.45	10103	10042.25	10063.45
Nifty(FUT) Aug Vol.	59887	68518	138647	180853
Nifty(FUT) Aug - OI	20219925	20028750	19407600	16468650
Nifty(FUT) Sep	10174.15	10134.6	10075.9	10093.95
Nifty(FUT) Sep Vol.	1791	1883	3580	6059
Nifty(FUT) Sep - OI	866100	826725	804975	749550

## Trade Statistics for 01/08/2017

PARTICULARS	NO. OF CONTRACTS	TURNOVER (RS. CR.)	PUT CALL RATIO
NSE Index Futures	1,16,950	10224	-
NSE Stock Futures	6,30,956	47694	-
NSE Index Options	28,00,215	2,54,339.21	-
NSE Stock Options	3,69,080	29022	0.43
NSE F&O Total Turnover	39,17,201	341,280	0.87
NSE Cash Turnover	-	25,776.09	-
BSE Cash Turnover	-	3,198.73	-
Total Turnover	-	370255	-

## FII Corner (F&O)

FII NET BUYING/SELLING & CHANGE IN OPEN INTEREST (Cr. Rupee)						
PARTICULARS	01/08/2017		31/07/2017		28/07/2017	
	Net Buying /Selling	Change In Open interest	Net Buying /Selling	Change In Open interest	Net Buying /Selling	Change In Open interest
Index Future	-421	-42	-426	858	-1744	2388
Index option	-341	1987	1281	3416	539	4450
Stock Future	-102	868	202	1430	150	1838
Stock option	174	802	340	1209	197	2666
Total	-690	3614	1397	6913	-858	11342

## Market Open Interest

ADDITION/REDUCTION IN MARKET OPEN INTEREST					
Contracts	01/08/2017	31/07/2017	28/07/2017	27/07/2017	26/07/2017
Index Futures	274	1218	-7315	-189	1785
Index Options	1261	3090	-18727	5380	1098
Stock Futures	12321	7801	-70520	10049	4394
Stock Options	1609	2033	-14658	1017	-616
F&O Total	15465	14142	-111219.84	16257.71	6660.5

## Nifty Option Open Interest Statistics

NIFTY OPTIONS HIGHEST ADDITION IN OPEN INTEREST						
Expiry	Strike	Option Type	Settlement Price	Volume	Open Interest	Change In OI
31-Aug-17	10100	PE	106.1	69153	2063325	762000
31-Aug-17	10000	PE	75.4	126941	4962450	604950
31-Aug-17	10350	CE	36.95	11411	541200	448800
31-Aug-17	9500	PE	13.95	31092	3432300	423600
31-Aug-17	10400	CE	25.35	64294	3028425	268350
31-Aug-17	9900	PE	53.1	90403	4162050	218175
31-Aug-17	10500	CE	11.85	63835	3449775	139275
31-Aug-17	10200	PE	148.75	14399	875550	97950
28-Dec-17	9500	PE	88.5	2935	1630225	96225
31-Aug-17	10700	CE	2.75	12103	418650	95025

NIFTY OPTIONS HIGHEST REDUCTION IN OPEN INTEREST						
Expiry	Strike	Option Type	Settlement Price	Volume	Open Interest	Change In OI
31-Aug-17	10300	CE	49.65	89341	2302800	-383175
31-Aug-17	9400	PE	10.2	17641	1860825	-279225
31-Aug-17	10000	CE	209.5	25664	2690100	-71175
31-Aug-17	8100	PE	1.05	1650	18750	-60750
28-Sep-17	9400	PE	28.05	3068	216300	-57150
31-Aug-17	9800	PE	37.25	61995	4145625	-56475
31-Aug-17	10200	CE	86.95	112976	2693700	-50775
31-Aug-17	10600	CE	5.6	16264	866250	-48750
31-Aug-17	11000	CE	0.95	7194	1184850	-42225
31-Aug-17	9300	PE	7.3	8865	1545975	-41850

## Stock Option Open Interest Statistics

STOCK OPTIONS WITH HIGHEST ADDITION IN OPEN INTEREST							
Symbol	Expiry	Strike	Option Type	Settl. Price	Volume	Open Interest	Change in OI
JPASSOCIAT	31-Aug-17	42.5	CE	0.1	85	7820000	4148000
SUZLON	31-Aug-17	22.5	CE	0.25	321	23190000	2910000
JPASSOCIAT	31-Aug-17	35	CE	0.5	167	10880000	2720000
JPASSOCIAT	31-Aug-17	40	CE	0.15	122	11764000	2516000
JPASSOCIAT	28-Sep-17	2.5	PE	0.05	30	2040000	2040000
PNB	31-Aug-17	170	CE	4.8	1547	3615500	1918000
PNB	31-Aug-17	165	CE	6.45	1426	3314500	1886500
SBIN	31-Aug-17	320	CE	7.4	3003	5580000	1875000
PNB	31-Aug-17	155	PE	7.4	1376	3657500	1788500
SUZLON	31-Aug-17	20	CE	0.65	292	28650000	1440000

STOCK OPTIONS WITH HIGHEST REDUCTION IN OPEN INTEREST							
Symbol	Expiry	Strike	Option Type	Settl. Price	Volume	Open Int.	Change in OI
ASHOKLEY	31-Aug-17	110	CE	4.85	1192	2744000	-399000
VEDL	31-Aug-17	280	CE	10.75	612	1312500	-332500
ASHOKLEY	31-Aug-17	105	CE	8.15	144	931000	-287000
ESCORTS	31-Aug-17	700	CE	30.35	2032	253000	-240900
SBIN	31-Aug-17	300	PE	6.3	1605	2790000	-219000
TATAGLOBAL	31-Aug-17	190	CE	0.75	88	229500	-216000
RCOM	31-Aug-17	25	PE	1.05	85	1750000	-210000
HINDALCO	31-Aug-17	210	CE	19.2	185	395500	-189000
ITC	31-Aug-17	300	CE	4.05	1143	5791200	-184800
SINTEX	31-Aug-17	37.5	PE	3.25	66	470250	-178125

## Research Team

Name	Designation	Email ID	Contact No.
Paras Bothra	President Equity Research	paras@ashikagroup.com	+91 22 6611 1704
Krishna Kumar Agarwal	Equity Research Analyst	krishna.a@ashikagroup.com	+91 33 4036 0646
Partha Mazumder	Equity Research Analyst	partha.m@ashikagroup.com	+91 33 4036 0647
Arijit Malakar	Equity Research Analyst	amalakar@ashikagroup.com	+91 33 4036 0644
Kapil Jagasia, CFA	Equity Research Analyst	kapil.j@ashikagroup.com	+91 22 6611 1715
Tirthankar Das	Technical & Derivative Analyst	tirthankar.d@ashikagroup.com	+91 33 4036 0645

Ashika Stock Broking Limited ("ASBL") or Research Entity has started its journey in the year 1994 and is engaged in the business of broking services, depository services, distributor of financial products (Mutual fund, IPO & Bonds). This research report has been prepared and distributed by ASBL in the sole capacity of a Research Analyst (Reg No. INH00000206) of SEBI (Research Analyst) Regulations 2014. ASBL is a wholly owned subsidiary of Ashika Global Securities (P) Ltd., a RBI registered non-deposit taking NBFC Company. Ashika group (details is enumerated on our website [www.ashikagroup.com](http://www.ashikagroup.com)) is an integrated financial service provider inter alia engaged in the business of Investment Banking, Corporate Lending, Commodity Broking, Debt Syndication & Other Advisory Services.

There were no significant and material disciplinary actions against ASBL taken by any regulatory authority during last three years.

### Disclosure

ASBL or its associates, its Research Analysts (including their relatives) may have financial interest in the subject company(ies). However, the said financial interest is not limited to having an open stock market position in /acting as advisor to /having a loan transaction with the subject company(ies) apart from registration as clients.

- ASBL or its Research Analysts (including their relatives) do not have any actual / beneficial ownership of 1% or more of securities of the subject company(ies) at the end of the month immediately preceding the date of publication of this report or date of the public appearance. However ASBL's associates may have actual / beneficial ownership of 1% or more of securities of the subject company(ies).
- ASBL or their Research Analysts (including their relatives) do not have any other material conflict of interest at the time of publication of this research report or date of the public appearance. However ASBL's associates might have an actual / potential conflict of interest (other than ownership).
- ASBL or its associates may have received compensation for investment banking, merchant banking, and brokerage services and for other products and services from the subject companies during the preceding 12 months. However, ASBL or its associates or its Research analysts (forming part of Research Desk) have not received any compensation or other benefits from the subject companies or third parties in connection with the research report. Moreover, Research Analysts have not received any compensation from the companies mentioned herein in the past twelve months.
- ASBL or their Research Analysts have not managed or co-managed public offering of securities for the subject company(ies) in the past twelve months. However ASBL's associates may have managed or co-managed public offering of securities for the subject company(ies) in the past twelve months.
- Research Analysts have not served as an officer, director or employee of the companies mentioned in the report.
- Neither ASBL nor its Research Analysts have been engaged in market making activity for the companies mentioned in the report.

### Disclaimer

The research recommendation and information herein are solely for the personal information of the authorized recipient and does not construe to be an offer documents or any investment, legal or taxation advice or solicitation of any action based upon it. This report is not for public distribution or use by any person or entity, where such distribution, publication, availability or use would be contrary to law, regulation or subject to any registration or licensing requirement. We will not treat recipients as customer by virtue of their receiving this report. The report is based upon the information obtained from public sources that we consider reliable, but we do not guarantee its accuracy or completeness. ASBL shall not be in anyways responsible for any loss or damage that may arise to any such person from any inadvertent error in the information contained in this report. The recipients of this report should rely on their own investigations.